

**PROPOSED LOCATION:
POSTLE IC #11-33HN,
#11-25HC & #11-25HN**

**INTERSECTION OF
COLORADO BLVD
& COUNTY ROAD 34**

SEE TOPO "B"

LEGEND:

PROPOSED LOCATION



GREAT WESTERN OIL & GAS COMPANY

**POSTLE IC #11-33HN, #11-25HC & #11-25HN
SECTION 12, T3N, R68W, 6th P.M.
SW 1/4 SW 1/4**



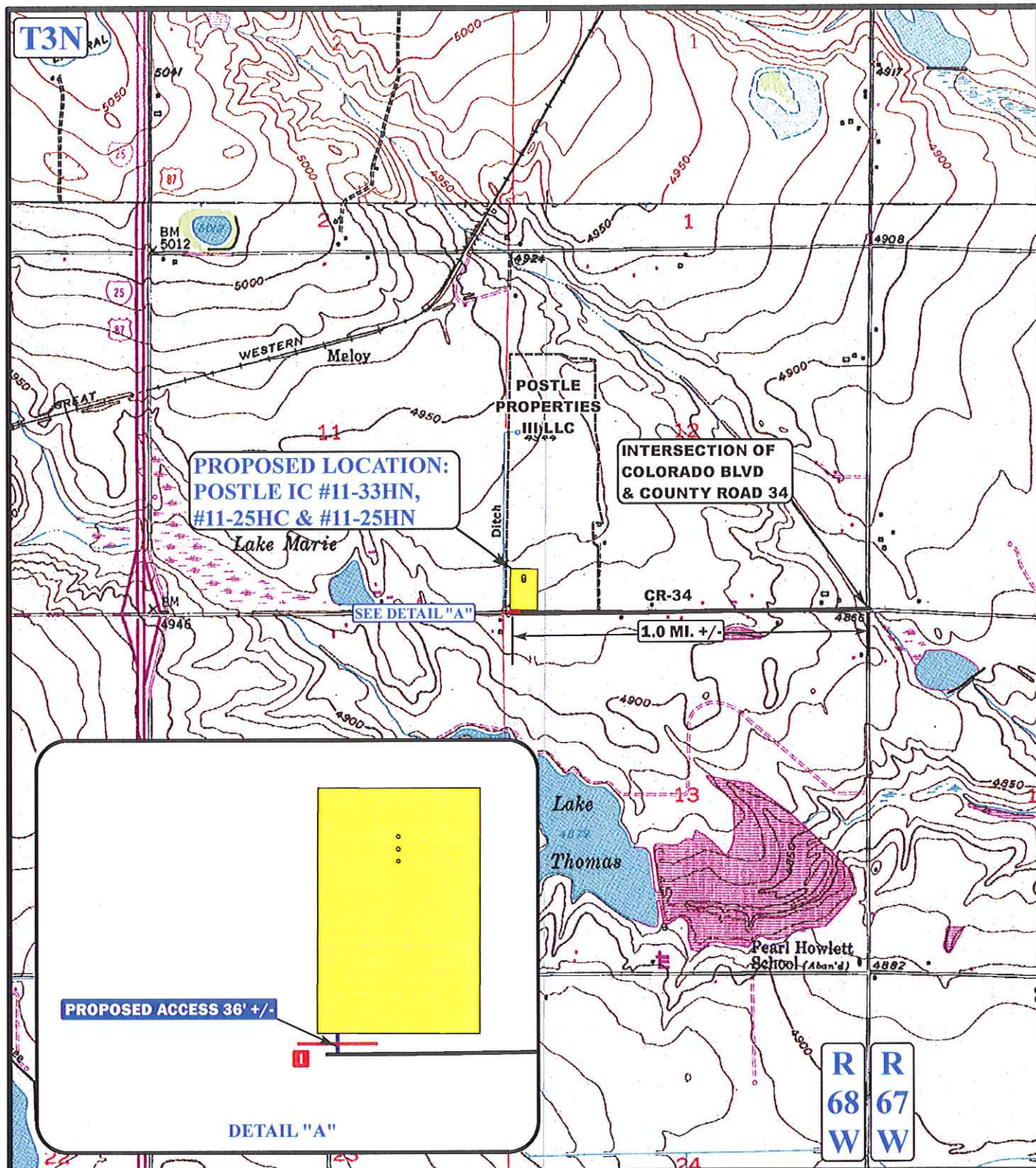
Uintah Engineering & Land Surveying
85 South 200 East Vernal, Utah 84078
(435) 789-1017 * FAX (435) 789-1813

**ACCESS ROAD
MAP**

04 23 13
MONTH DAY YEAR

SCALE: 1:100,000 | DRAWN BY: J.L.H. | REVISED: 08-14-13





LEGEND:

- EXISTING ROADS
- PROPOSED ACCESS ROAD
- 24" CMP REQUIRED

GREAT WESTERN OIL & GAS COMPANY

POSTLE IC #11-33HN, #11-25HC & #11-25HN
SECTION 12, T3N, R68W, 6th P.M.
SW 1/4 SW 1/4



Uintah Engineering & Land Surveying
85 South 200 East Vernal, Utah 84078
(435) 789-1017 * FAX (435) 789-1813

ACCESS ROAD
MAP

04 23 13
MONTH DAY YEAR

SCALE: 1"=2000' DRAWN BY: J.L.H. REVISED: 08-14-13

B
TOPO