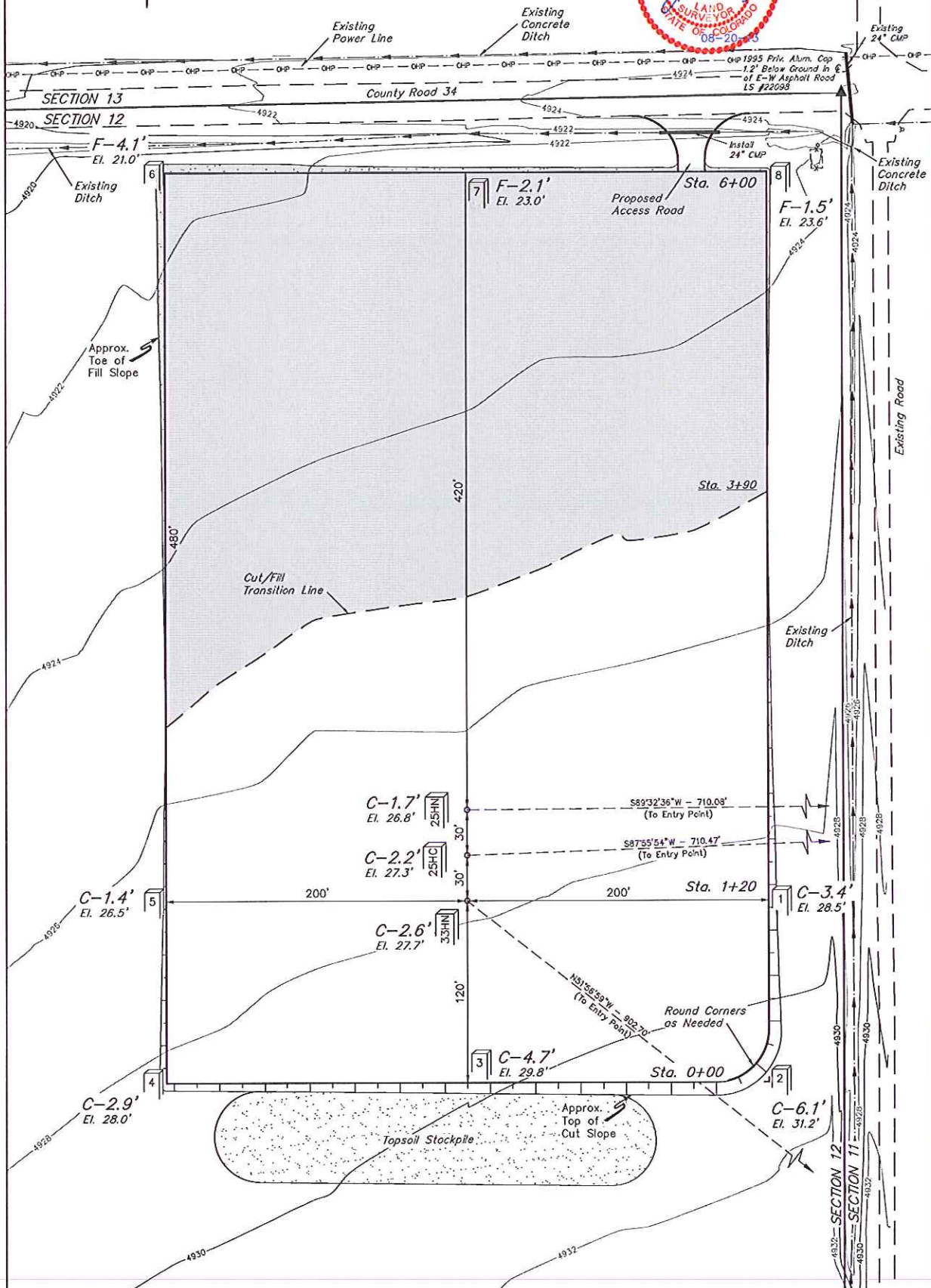


GREAT WESTERN OIL & GAS COMPANY
 CONSTRUCTION LAYOUT FOR
 POSTLE IC #11-33HN, #11-25HC & #11-25HN
 SECTION 12, T3N, R68W, 6th P.M.
 SW 1/4 SW 1/4

FIGURE #1

SCALE: 1" = 60'
 DATE: 04-25-13
 DRAWN BY: J.W.
 REV: 05-28-13 A.D.
 REV: 06-07-13 B.D.H.
 REV: 08-15-13 J.W.



Elev. Ungraded Ground At #11-33HN Loc. Stake = 4927.7'
 FINISHED GRADE ELEV. AT #11-33HN LOC. STAKE = 4925.1'

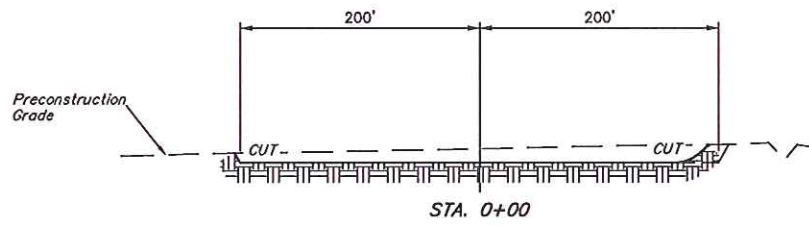
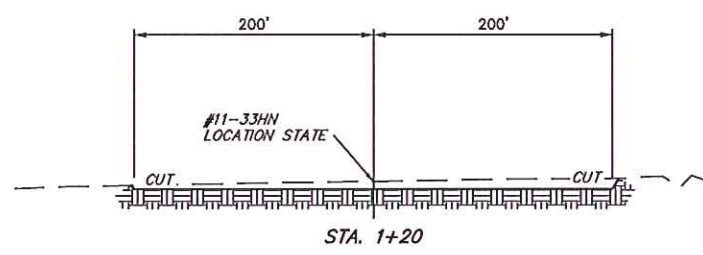
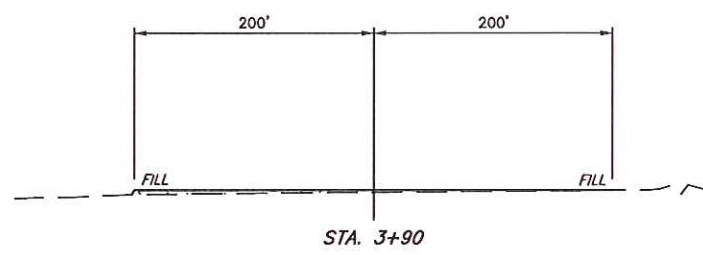
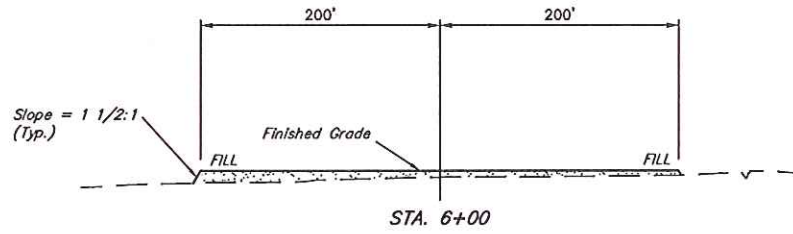
UTAH ENGINEERING & LAND SURVEYING
 85 So. 200 East • Vernal, Utah 84078 • (435) 789-1017

1" = 20'
X-Section
Scale
1" = 50'

DATE: 04-25-13
DRAWN BY: J.W.
REV: 05-28-13 A.D.
REV: 06-07-13 B.D.H.
REV: 08-15-13 J.W.

GREAT WESTERN OIL & GAS COMPANY
CONSTRUCTION LAYOUT CROSS SECTIONS FOR
POSTLE IC #11-33HN, #11-25HC & #11-25HN
SECTION 12, T3N, R68W, 6th P.M.
SW 1/4 SW 1/4

FIGURE #2



NOTE:
Topsoil should not be
Stripped Below Finished
Grade on Substructure Area.

* NOTE:
FILL QUANTITY INCLUDES
5% FOR COMPACTION

APPROXIMATE YARDAGES

(6") Topsoil Stripping	= 4,580 Cu. Yds.
Remaining Location	= 8,230 Cu. Yds.
TOTAL CUT	= 12,810 CU. YDS.
FILL	= 8,230 CU. YDS.

EXCESS MATERIAL	= 4,580 Cu. Yds.
Topsoil	= 4,580 Cu. Yds.
EXCESS UNBALANCE	= 0 Cu. Yds.
(After Interim Rehabilitation)	

APPROXIMATE ACREAGE
WELL SITE DISTURBANCE = ± 6.066 ACRES
ACCESS ROAD DISTURBANCE = ± 0.025 ACRES
TOTAL = ± 6.091 ACRES

UINTAH ENGINEERING & LAND SURVEYING
85 So. 200 East • Vernal, Utah 84078 • (435) 789-1017