

GREAT WESTERN OIL AND GAS COMPANY POSTLE IC #11-33HN, #11-25HC & #11-25HN

LOCATED IN WELD COUNTY, COLORADO
SECTION 12, T3N, R68W, 6th P.M.

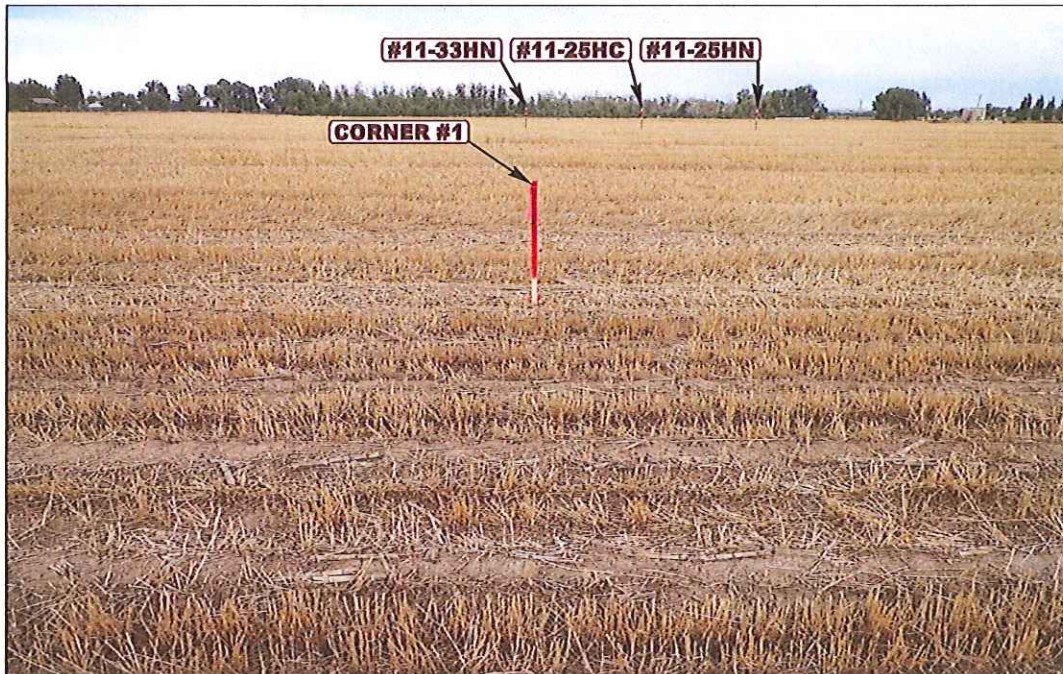


PHOTO: VIEW FROM CORNER #1 TO LOCATION STAKES

CAMERA ANGLE: EASTERLY



PHOTO: VIEW FROM BEGINNING OF PROPOSED ACCESS

CAMERA ANGLE: NORTHERLY



Uintah Engineering & Land Surveying
85 South 200 East Vernal, Utah 84078
(435) 789-1017 * FAX (435) 789-1813

LOCATION PHOTOS

04 23 13
MONTH DAY YEAR

PHOTO
P1

TAKEN BY: D.N. DRAWN BY: J.L.H. REVISED: 08-14-13

GREAT WESTERN OIL AND GAS COMPANY

POSTLE IC #11-33HN, #11-25HC & #11-25HN

LOCATED IN WELD COUNTY, COLORADO
SECTION 12, T3N, R68W, 6th P.M.



PHOTO: VIEW OF LOCATION STAKES

CAMERA ANGLE: NORTHERLY



PHOTO: VIEW OF LOCATION STAKES

CAMERA ANGLE: EASTERLY



UELS

Uintah Engineering & Land Surveying
85 South 200 East Vernal, Utah 84078
(435) 789-1017 * FAX (435) 789-1813

LOCATION PHOTOS

04 23 13
MONTH DAY YEAR

TAKEN BY: D.N. DRAWN BY: J.L.H. REVISED: 08-14-13

PHOTO
P2

GREAT WESTERN OIL AND GAS COMPANY

POSTLE IC #11-33HN, #11-25HC & #11-25HN

LOCATED IN WELD COUNTY, COLORADO
SECTION 12, T3N, R68W, 6th P.M.



PHOTO: VIEW OF LOCATION STAKES

CAMERA ANGLE: SOUTHERLY

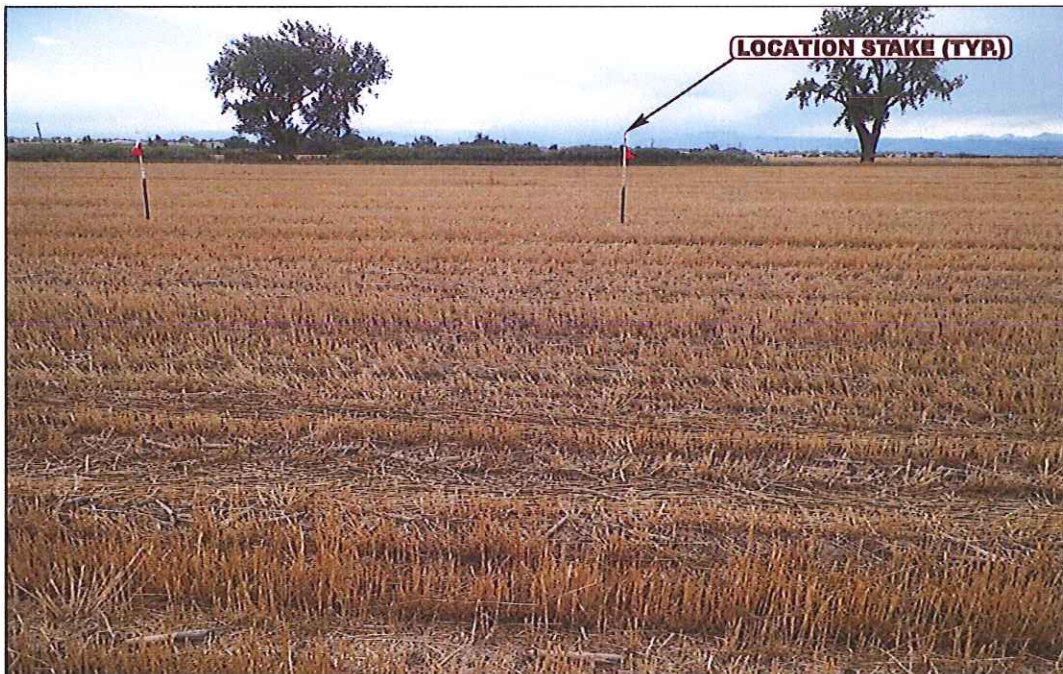


PHOTO: VIEW OF LOCATION STAKES

CAMERA ANGLE: WESTERLY



Uintah Engineering & Land Surveying
85 South 200 East Vernal, Utah 84078
(435) 789-1017 * FAX (435) 789-1813

LOCATION PHOTOS

04 23 13
MONTH DAY YEAR

TAKEN BY: D.N.

DRAWN BY: J.L.H.

REVISED: 08-14-13

PHOTO
P3