

Company: Omimex Petroleum Inc.

Well: Bledsoe 12-6-5-44

Field: Ballyneal

County: Yuma State: Colorado

Platform Express
Array Induction
with Linear Correlation

County: Yuma
Field: Ballyneal
Location: Sec. 6, Twp. 5N, Rng. 44W
Well: Bledsoe 12-6-5-44
Company: Omimex Petroleum Inc.

Location:		Elev.		K.B.	
Sec. 6, Twp. 5N, Rng. 44W		FSL 1981' x FWL 861'		G.L.	
Lat: 40.430400, Long: -102.317290		D.F.		3758.50 ft	
Permanent Datum:		Ground Level		Elev.: 3753.50 f	
Log Measured From:		Kelly Bushing		6.00 ft	
Drilling Measured From:		Kelly Bushing		above Perm.Datum	
API Serial No.	Section:	Township:		Range:	
05-125-11965-0000	6	5N		44W	

Logging Date	27-Jan-2013	
Run Number	Run 1	
Depth Driller	2637.00 ft	
Schlumberger Depth	2632.00 ft	
Bottom Log Interval	2632.00 ft	
Top Log Interval	472.00 ft	
Casing Driller Size @ Depth	7 in @ 462.00 ft	
Casing Schlumberger	472 ft	
Bit Size	6.25 in	
Type Fluid In Hole	Fresh Water	
Density	8.6 lbm/gal	32 s
Fluid Loss	PH	
Source of Sample	Active Tank	
RM @ Meas Temp	0.19 ohm.m @ 74.6 degF	
RMF @ Meas Temp	0.14 ohm.m @ 74.6 degF	
RMC @ Meas Temp	0.24 ohm.m @ 74.6 degF	
Source RMF	Calculated	
RM @ BHT	0.07 @ 212 0.05 @ 212	
Max Recorded Temperatures	108 degF	
Circulation Stopped	28-Jan-2013 11:15:00	
Logger on Bottom	28-Jan-2013 14:50:29	
Unit Number	3030	
Recorded By	Arvin Shi/Max Pace	
Witnessed By	Paul Dekaye	

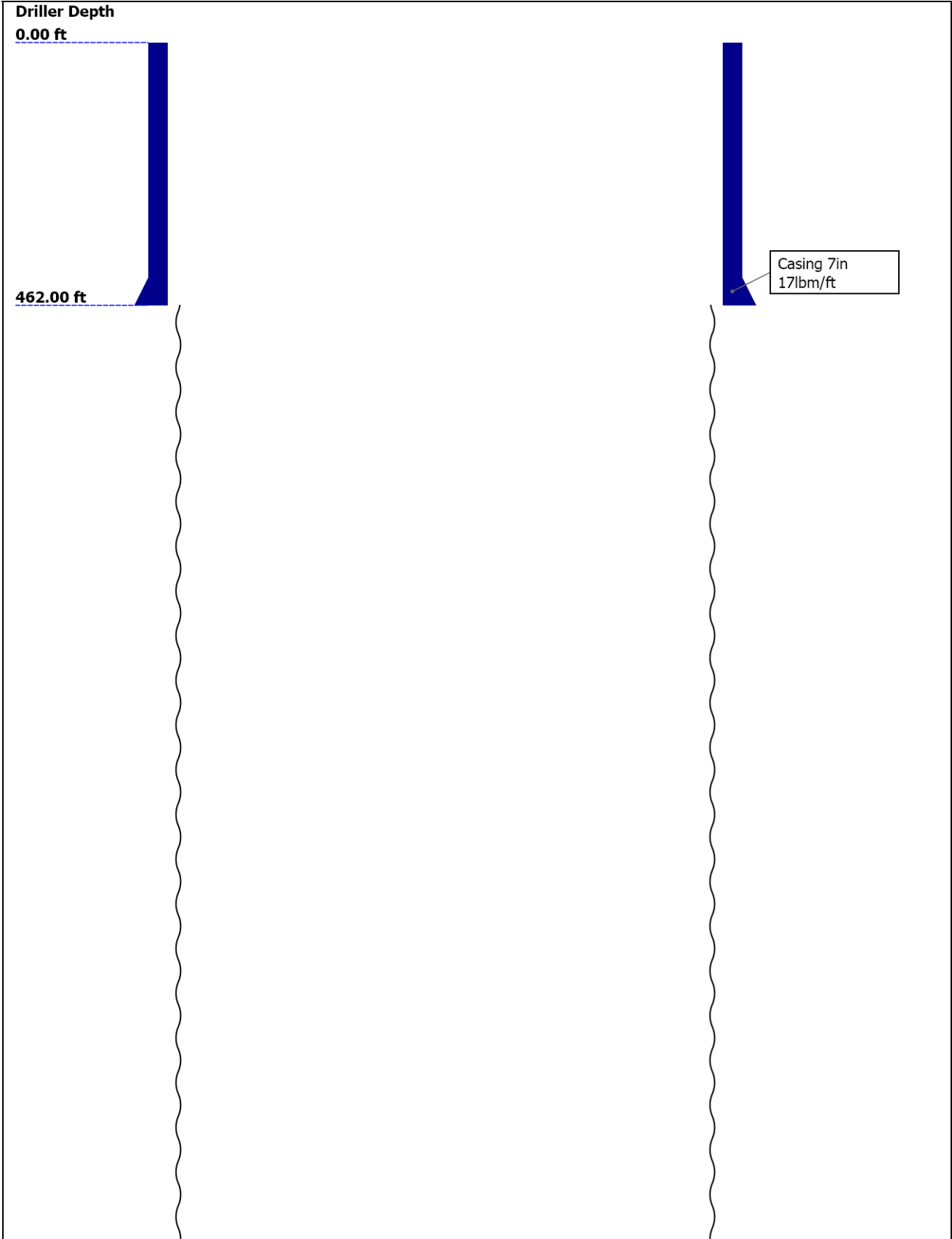
Disclaimer

THE USE OF AND RELIANCE UPON THIS RECORDED-DATA BY THE HEREIN NAMED COMPANY (AND ANY OF ITS AFFILIATES, PARTNERS, REPRESENTATIVES, AGENTS, CONSULTANTS AND EMPLOYEES) IS SUBJECT TO THE TERMS AND CONDITIONS AGREED UPON BETWEEN SCHLUMBERGER AND THE COMPANY, INCLUDING: (a) RESTRICTIONS ON USE OF THE RECORDED-DATA; (b) DISCLAIMERS AND WAIVERS OF WARRANTIES AND REPRESENTATIONS REGARDING COMPANY'S USE AND RELIANCE UPON THE RECORDED-DATA; AND (c) CUSTOMER'S FULL AND SOLE RESPONSIBILITY FOR ANY INFERENCE DRAWN OR DECISION MADE IN CONNECTION WITH THE USE OF THIS RECORDED-DATA.

Contents

- 1. Header
- 2. Disclaimer
- 3. Contents
- 4. Well Sketch
- 5. Borehole Size/Casing/Tubing Record
- 6. Operational Run Summary
- 7. Remarks and Equipment Summary
- 8. Depth Summary
- 9. Run 1 5" Induction
 - 9.1 Integration Summary
 - 9.2 Software Version
 - 9.3 Composite Summary
 - 9.4 Log (EMD 5in Induction)
 - 9.5 Parameter Listing
- 10. Run 1 5" Induction
 - 10.1 Composite Summary
 - 10.2 EMD 5in Induction RA

Well Sketch



2637.00 ft

Open Hole 6.25in

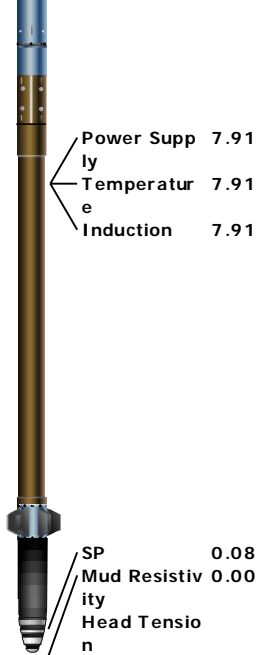
Borehole Size/Casing/Tubing Record

Bit						
Bit Size (in)	6.25					
Top Driller (ft)	462					
Top Logger (ft)	462					
Bottom Driller (ft)	2637					
Bottom Logger (ft)	2632					
Casing						
Size (in)	7					
Weight (lbm/ft)	17					
Inner Diameter (in)	6.54					
Top Driller (ft)	0					
Top Logger (ft)	0					
Bottom Driller (ft)	462					
Bottom Logger (ft)	472					

Operational Run Summary

Parameter (unit)	Run 1					
Date Log Started	27-Jan-2013					
Time Log Started	13:54:18					
Date Log Finished	27-Jan-2013					
Time Log Finished	15:33:47					
Top Log Interval (ft)						
Bottom Log Interval (ft)						
Total Depth (ft)	2632.00					
Max Hole Deviation (deg)						
Azimuth of Max Deviation (deg)						
Bit Size (in)	6.250					
Logging Unit Number	3030					
Logging Unit Location	Fort Morgan, CO					
Recorded By	Arvin Shi/Max Pace					
Witnessed By	Paul Dekaye					
Service Order Number	C6VJ-00045					

Remarks and Equipment Summary					
Run 1: Toolstring				Run 1: Remarks	
Equip name	Length	MP name	Offset		
LEH-QT	55.57				
LEH-QT					
EDTC-B	52.65				
EDTH-B					
EDTG-A					
EDTC-B					
		CTEM	49.15		
		ACCZ	0.00		
		HV	0.00		
		Gamma Ray	47.28		
		TelStatus	46.15		
A daptor_Head	46.15				
GPIT-F:1881	41.65				
GPIH-B					
GPIC-F:1881		GPIT-F Incl	40.23		
DHRU-F		inometer			
HGNS-H:4779	37.65	GPIT	0.00		
HGNH:3826		Temperatur	37.62		
NSR-F:5215		e			
NPV-N		GR	36.91		
HMCA-H					
HGNS-H:4779					
HACCZ-H:5736					
		CNL Porosit	30.57		
		y			
		HGNS	28.24		
		HMCA	28.24		
		Accelerome	0.00		
		ter			
HDRS-H:3863	28.24				
ECH-MEB:2898					
HRCC-H:3828					
HRMS-H:3863					
HRGD-H:3870					
Short Spacing					
Backscatter					
GSR-J:5471		HRCC	24.24		
Long Spacing:28					
620					
GPV-Q					
		MCFL	18.81		
		Caliper	18.33		
		TLD Density	17.94		
AIT-H:216	16.00				
AHIS:216					
AHRM:216					



Lengths are in ft

Maximum Outer Diameter = 5.000 in

Line: Sensor Location, Value: Gating Offset

All measurements are relative to TOOL_ZERO

Depth Summary

Depth Control Parameters	Run 1		
Conveyance Type	Wireline		
Rig Type	Land		
Depth Measuring Device	Run 1		
Type	IDW-B		
Wheel Correction 1	1		
Wheel Correction 2	0		
Tension Device	Run 1		
Type	CMTD-B/A		
Calibration Points	0		
Logging Cable	Run 1		
Type	7-46NT-XS		
Logging Cable Length (ft)	24000.00		

Run 1

5" Induction

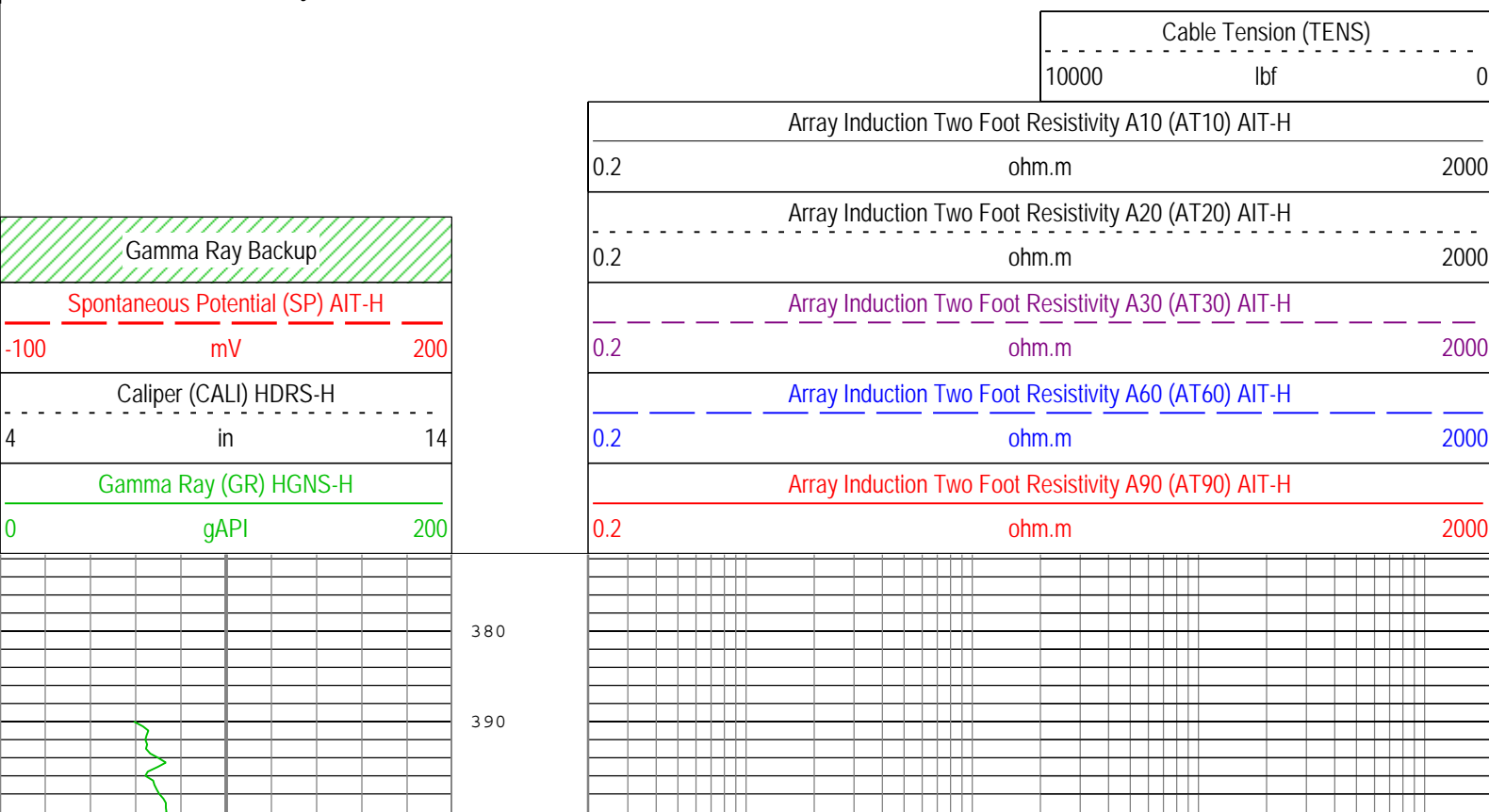
Integration Summary

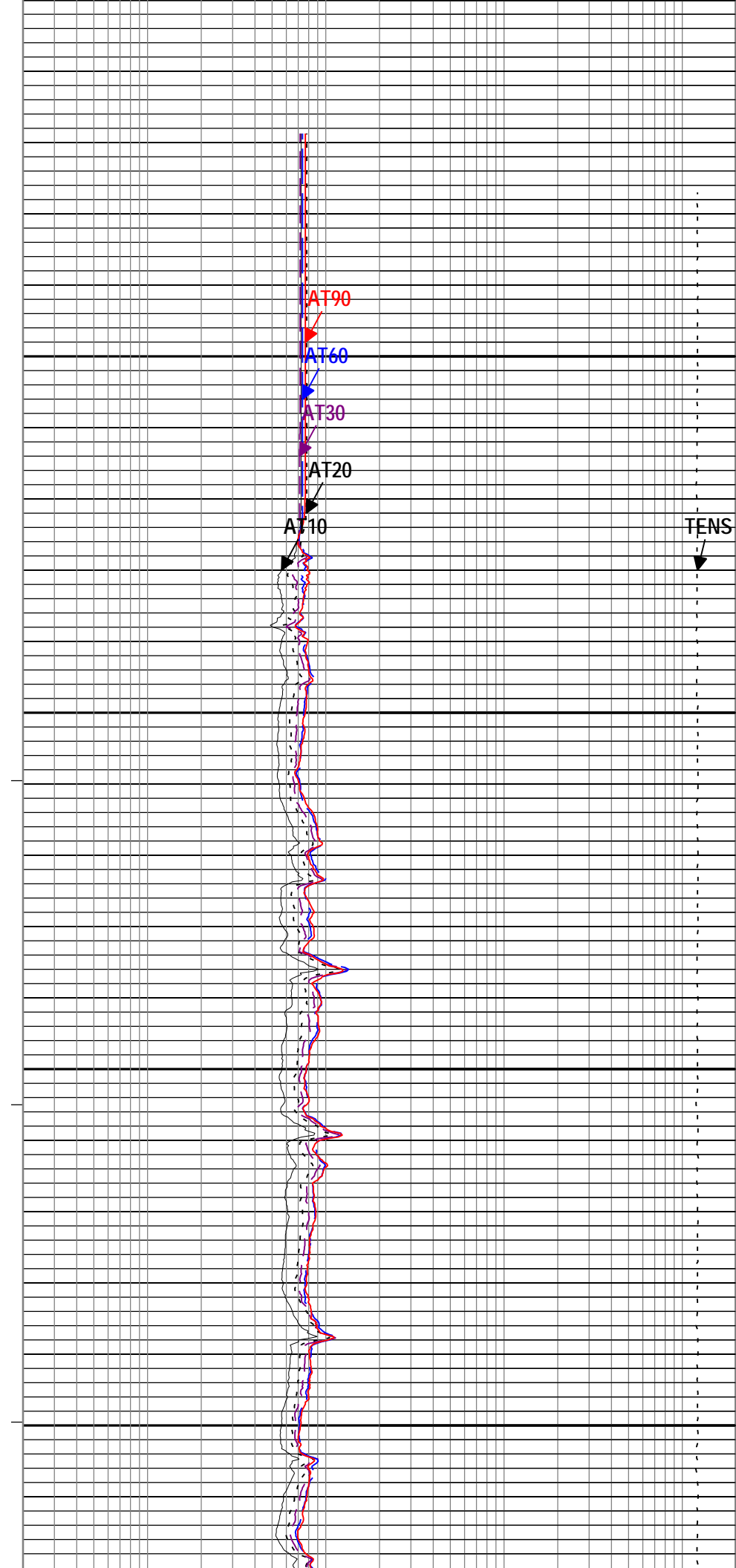
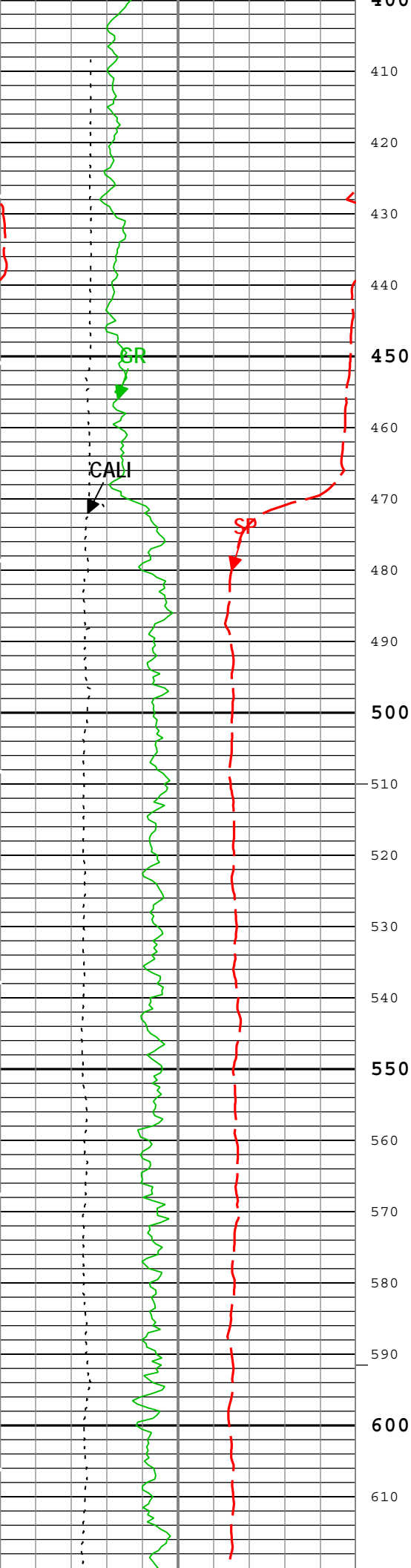
Output Channel(s)	Output Description	Input Parameter	Output Value	Unit
ICV	Integrated Cement Volume	GCSE_UP_PASS, FCD	284.75	ft3
IHV	Integrated Hole Volume	GCSE_UP_PASS	498.3	ft3

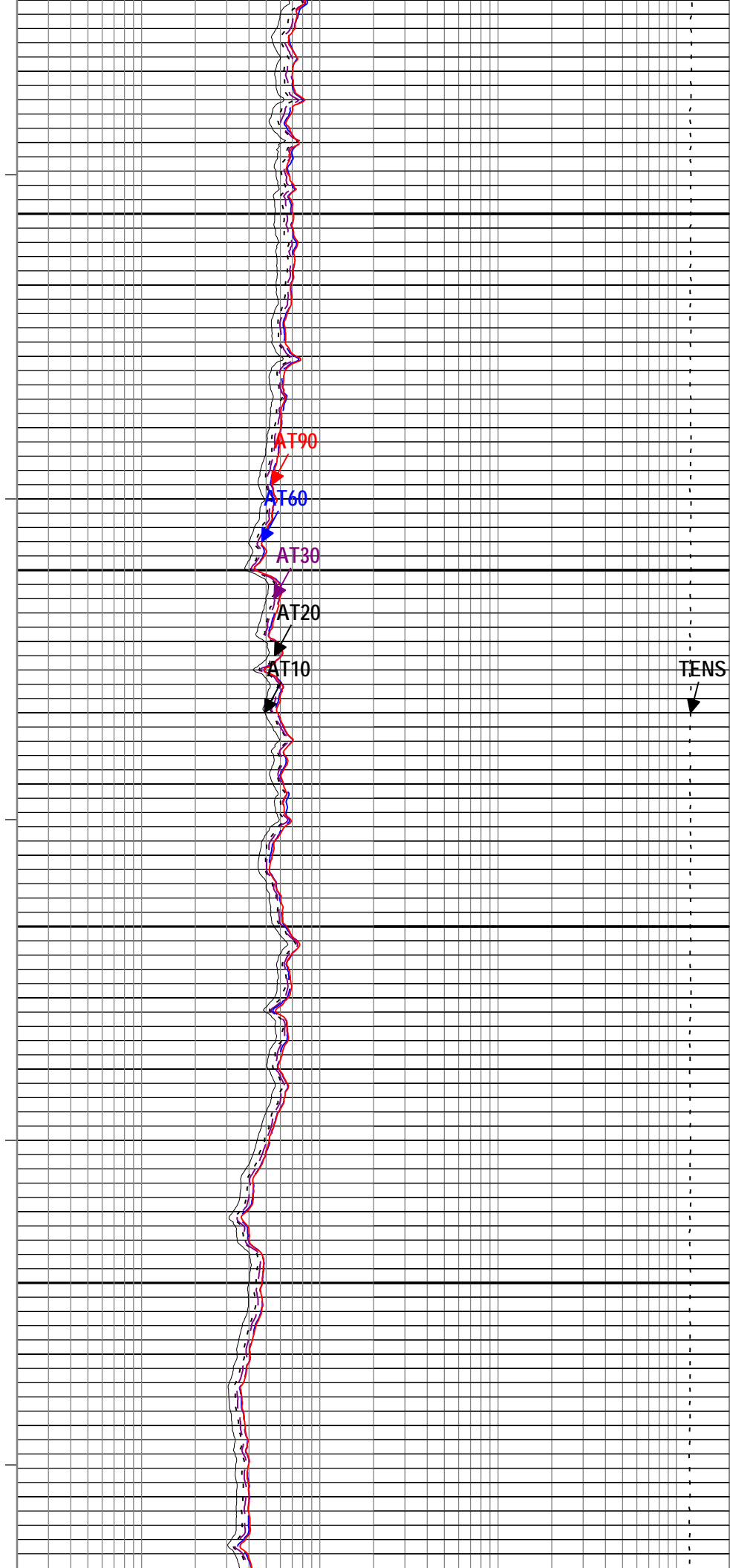
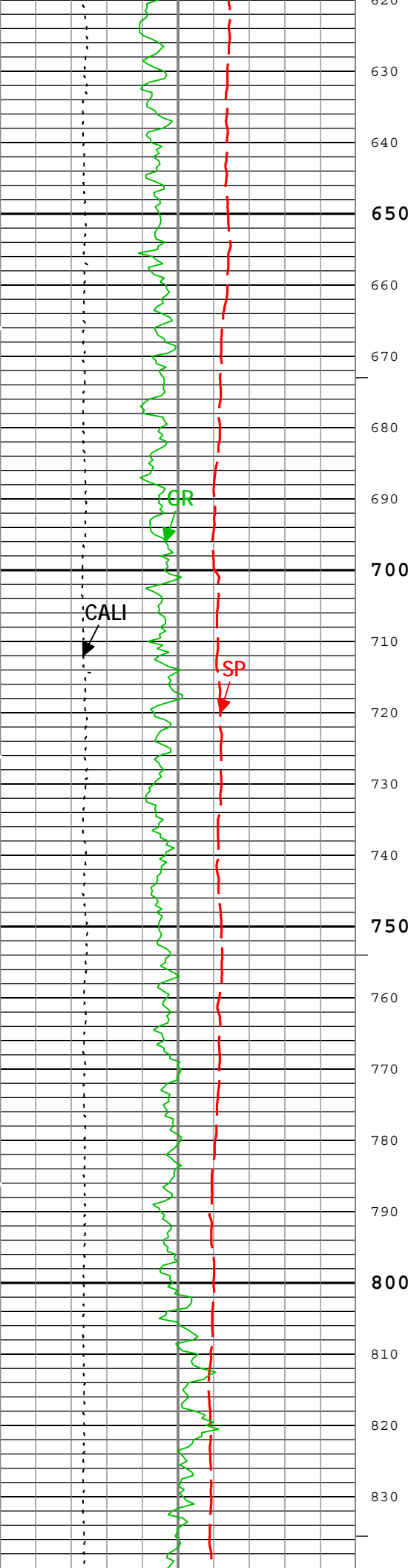
Software Version

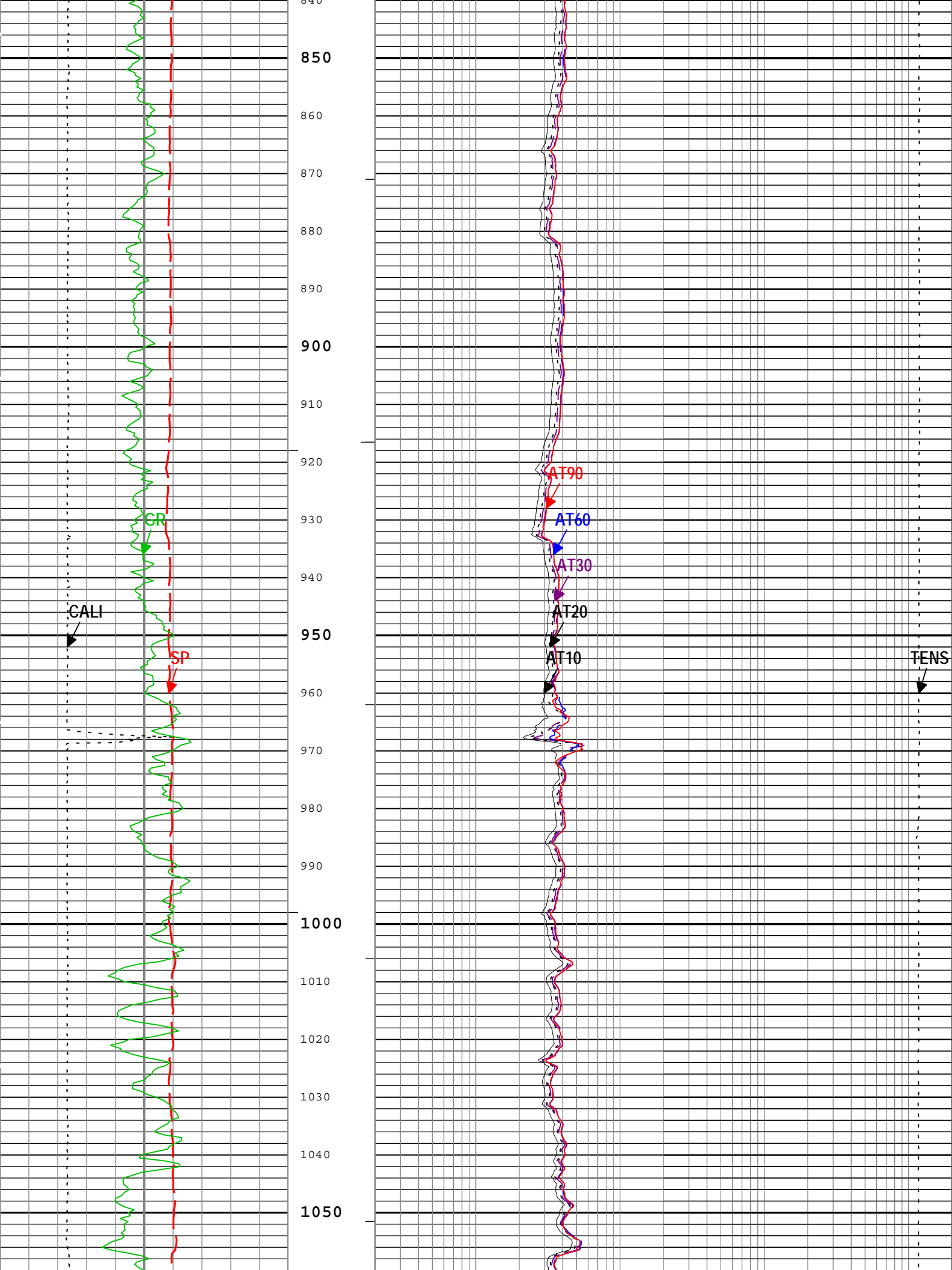
Acquisition System	Version
MaxWell	3.1.9755.0
Application Patch	SP-20120723-3.1.9755.1112 EXP_APL-MASTAXIS-3.1.9755.1221

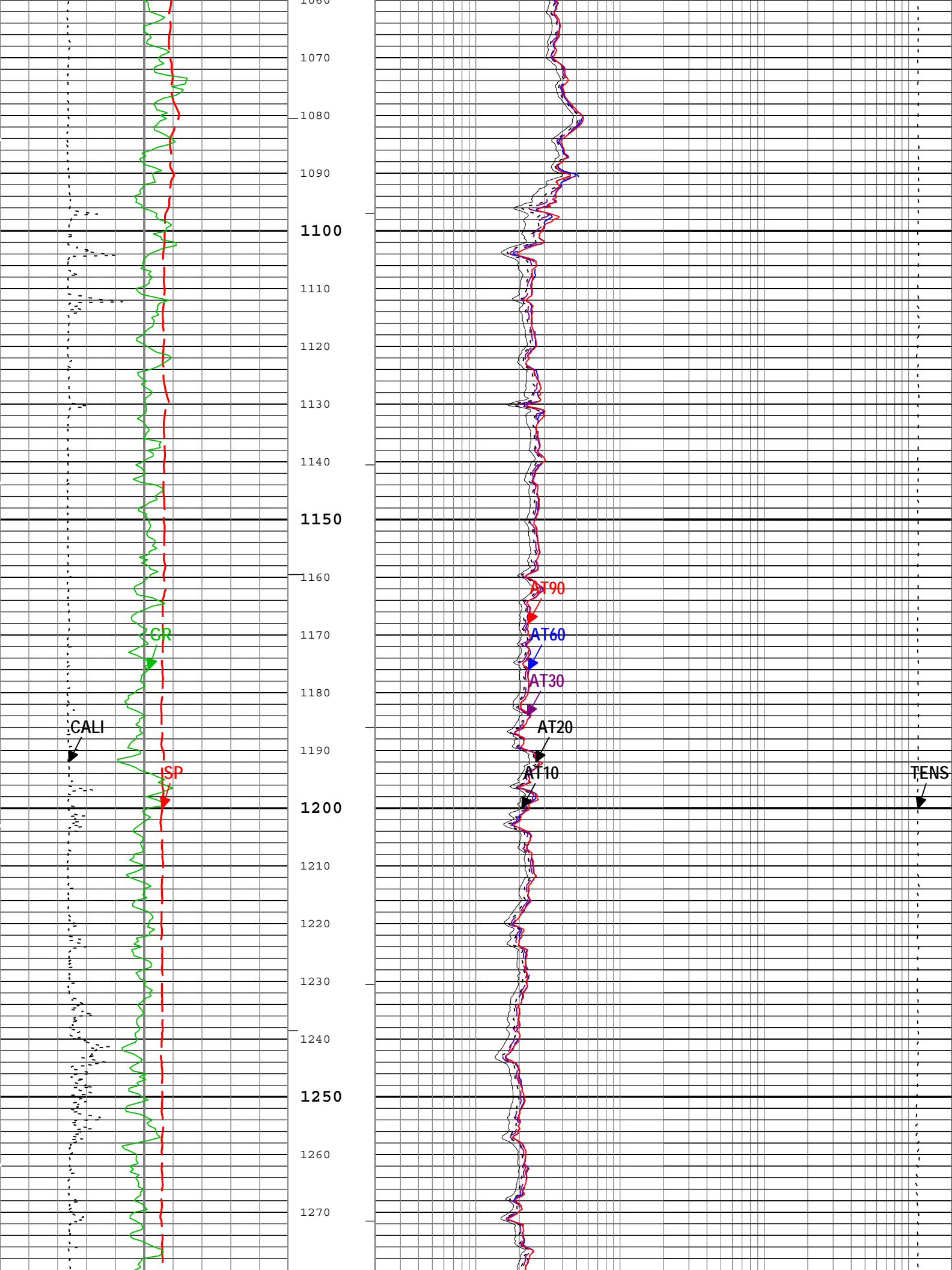
Computation	Description		Version
Borehole	Borehole Ensemble provides common Borehole Parameters and Channels		3.1.9755.0
Tool Elements	Description	Software Version	Firmware Version
HBCC-H	Hill Top High Resolution Control Cartridge, 150 degC	3.1.9755.0	3.0

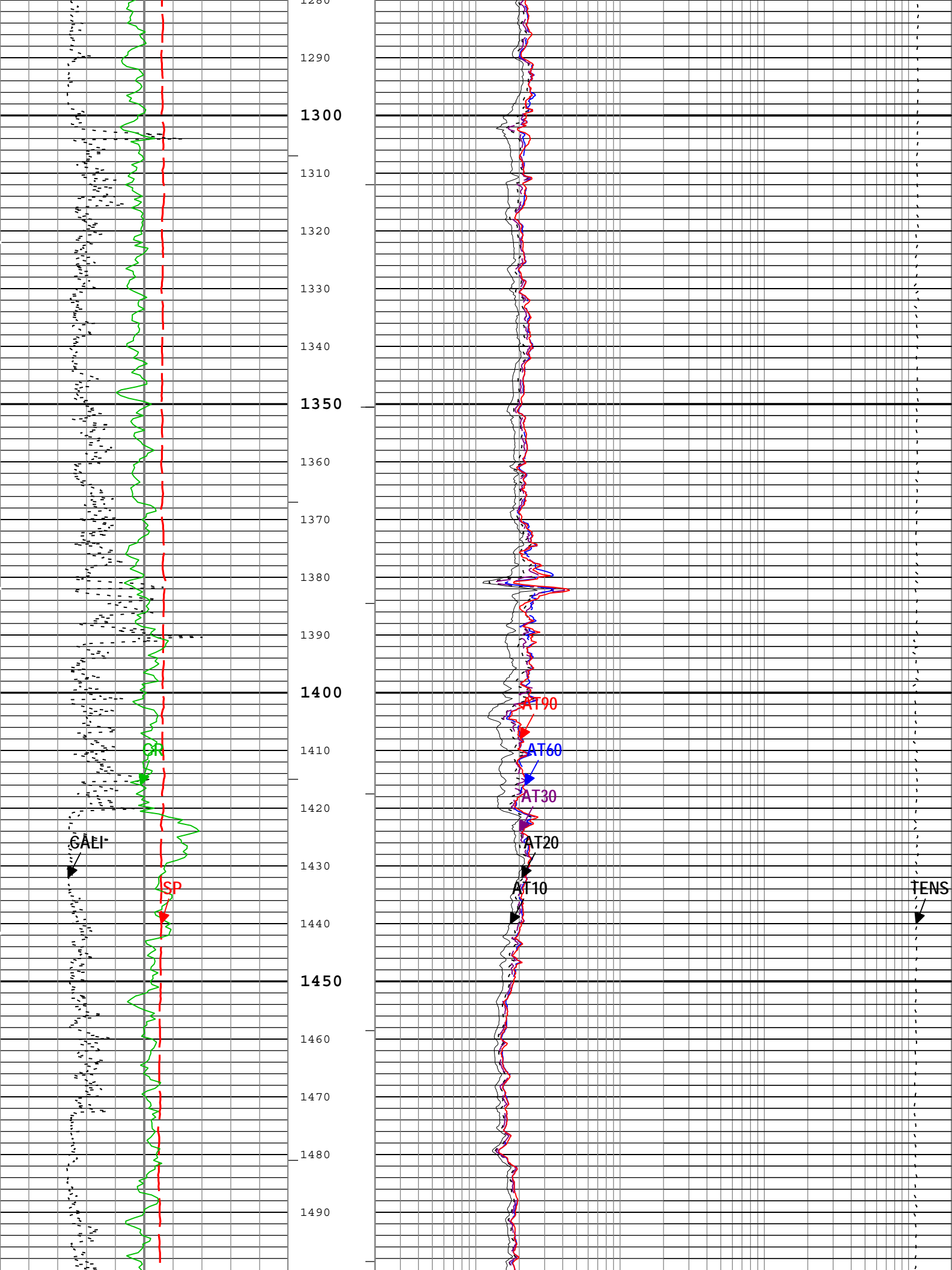


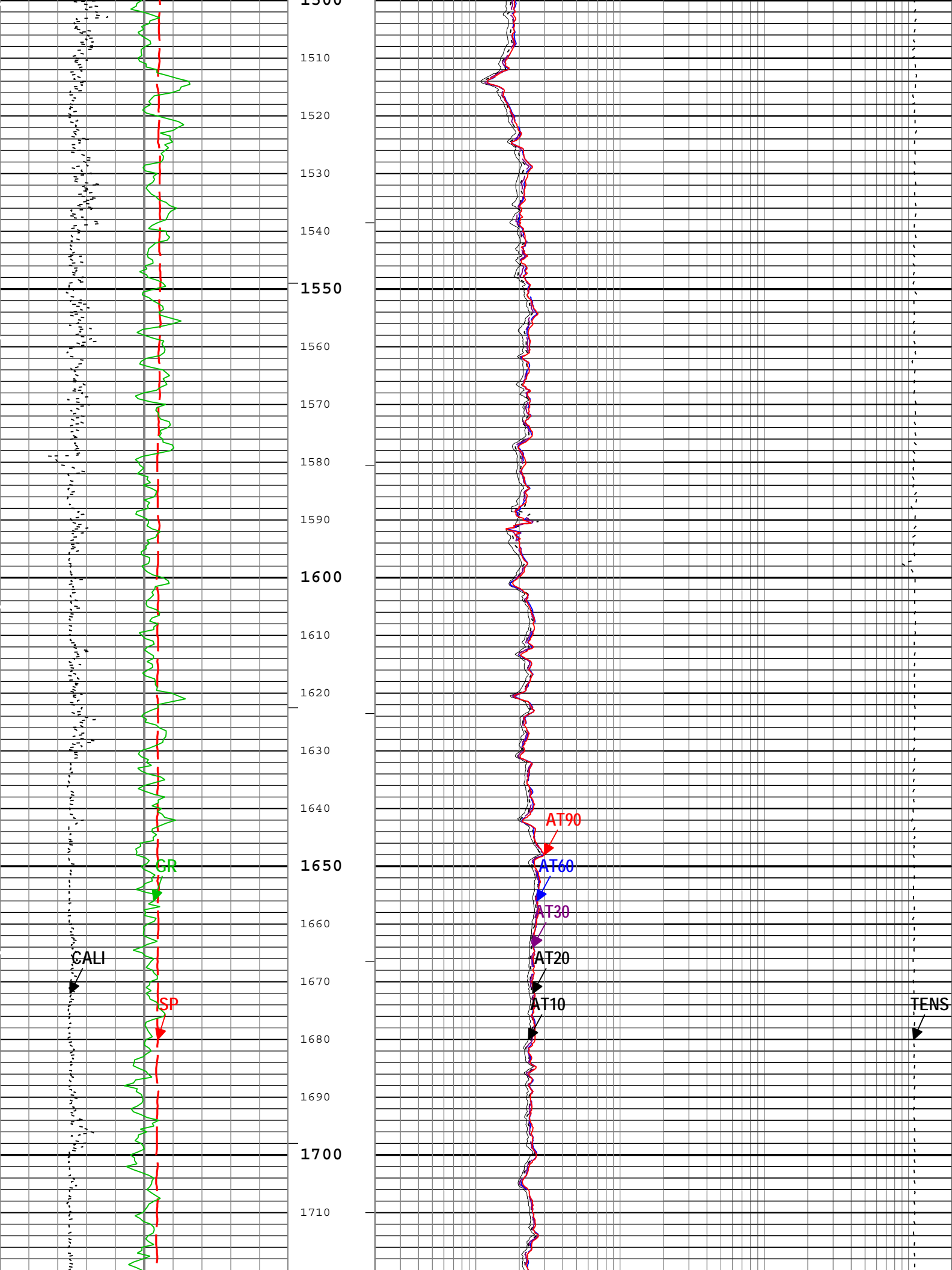


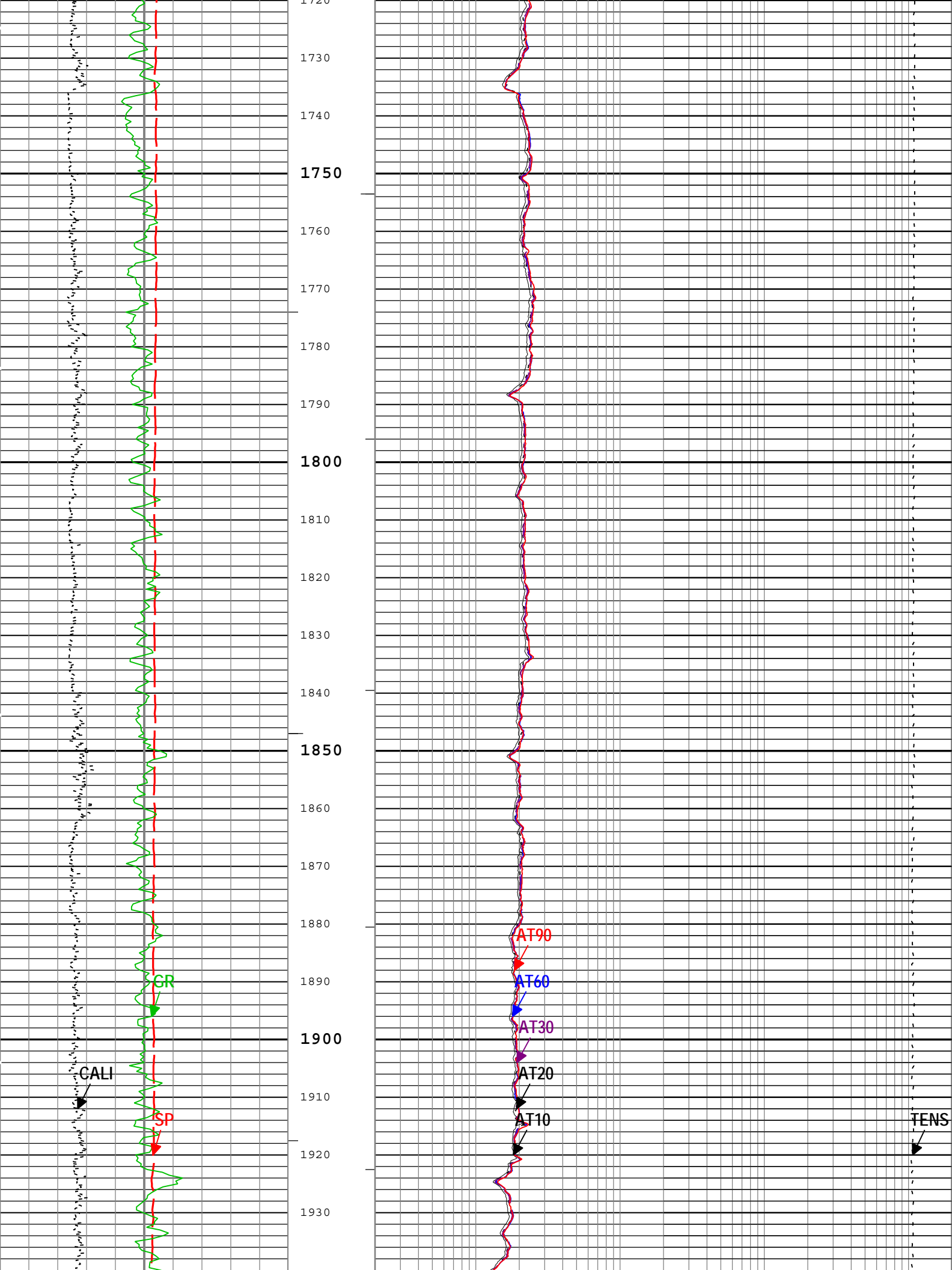


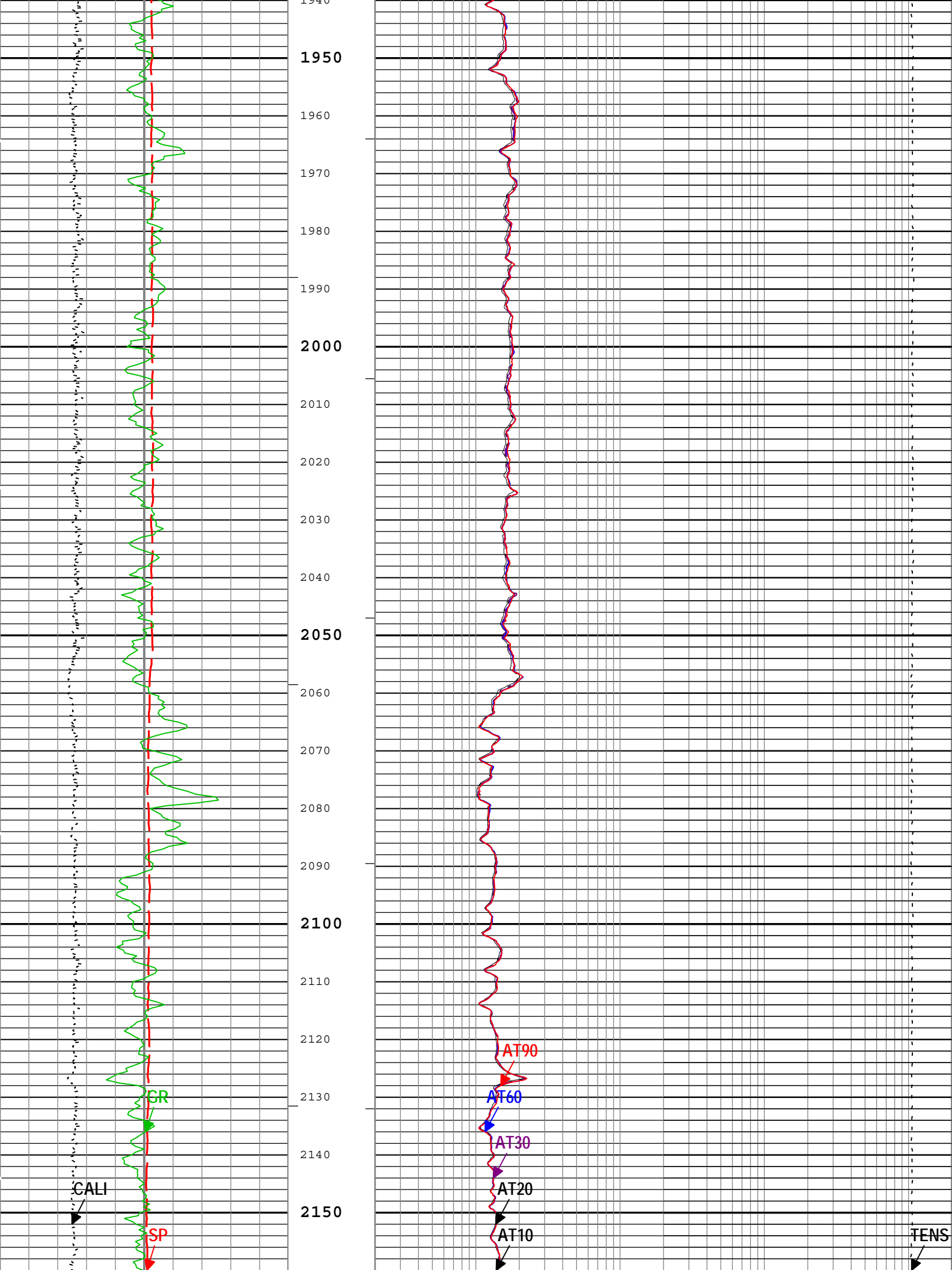


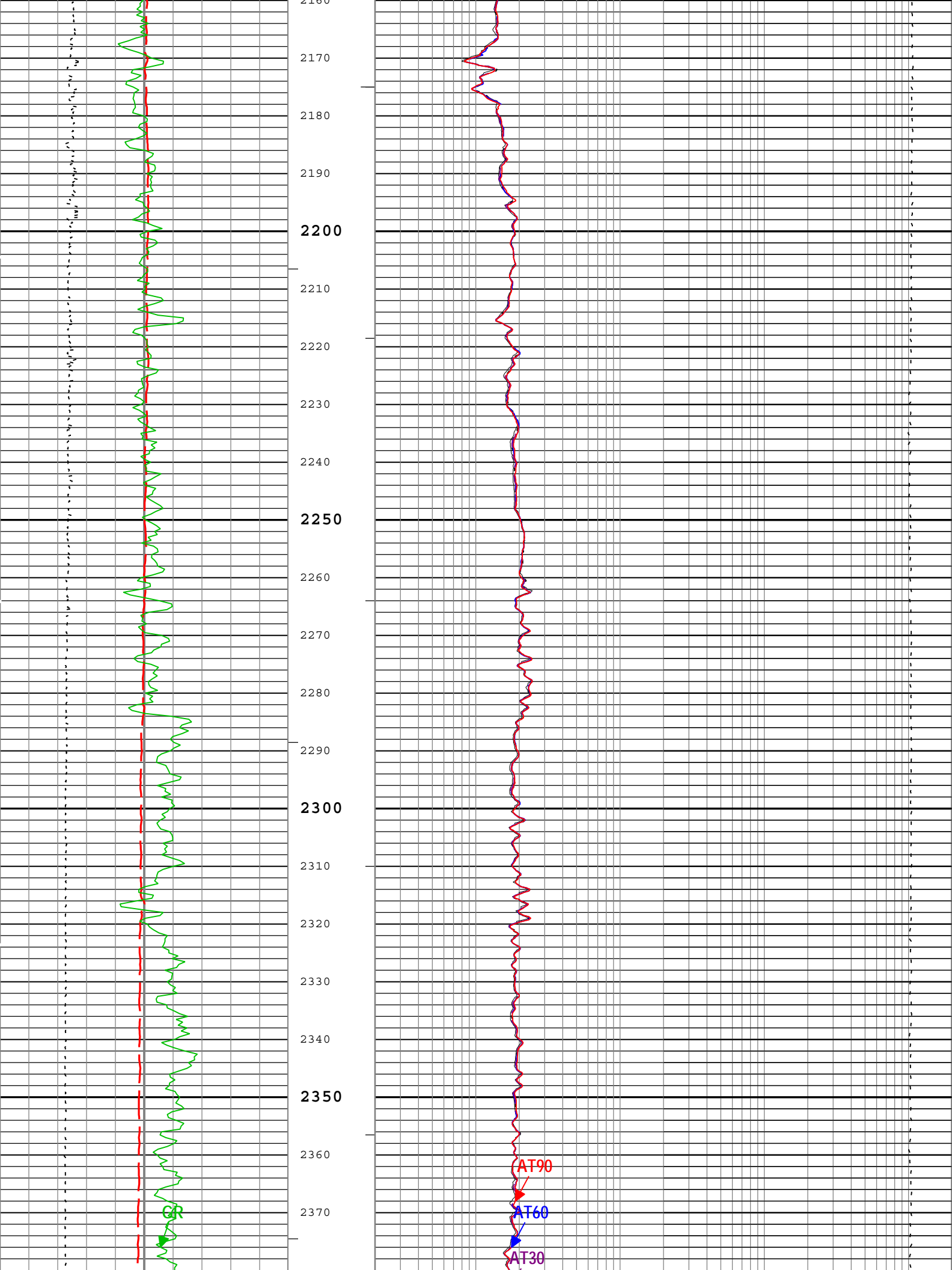


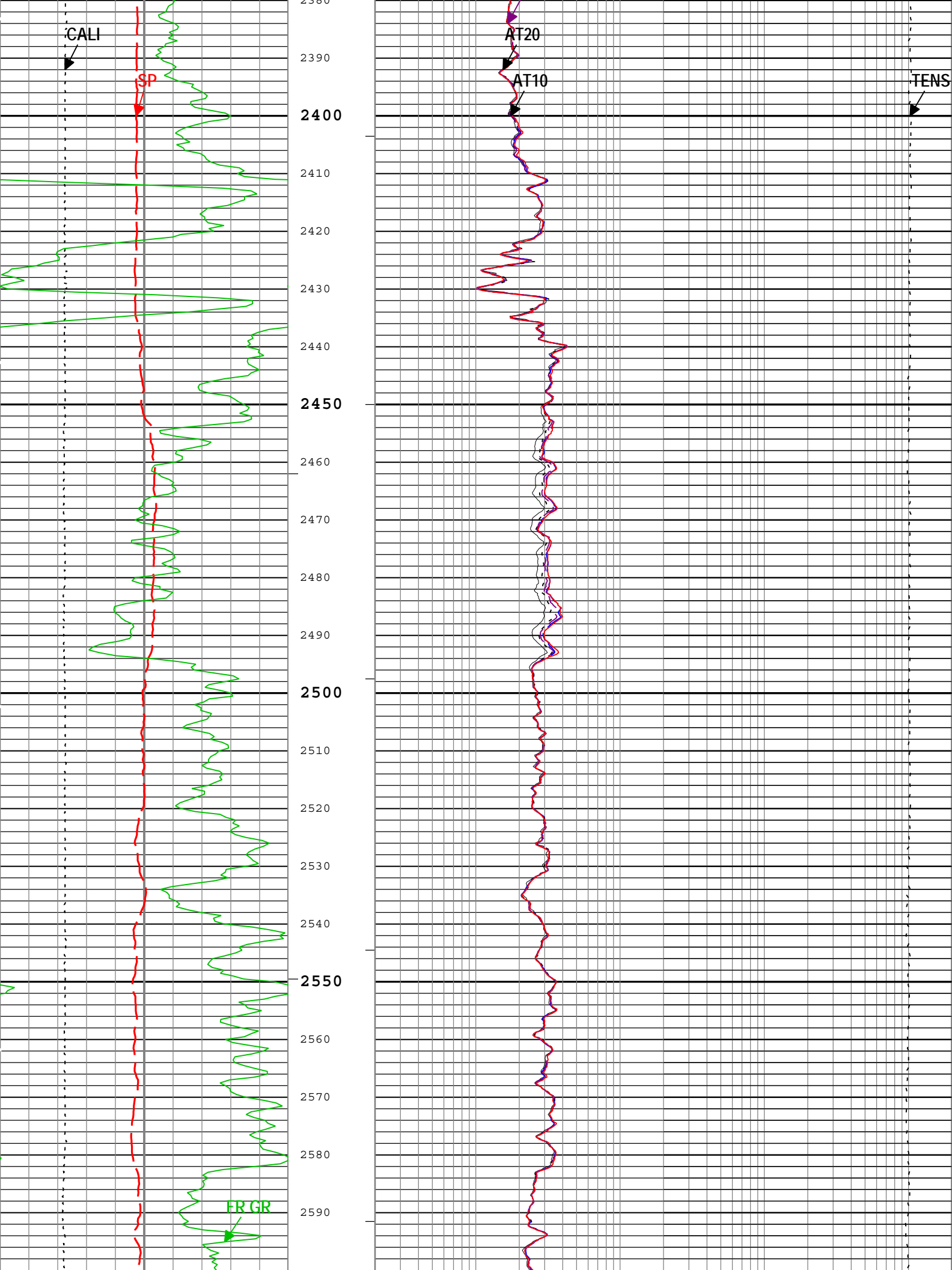


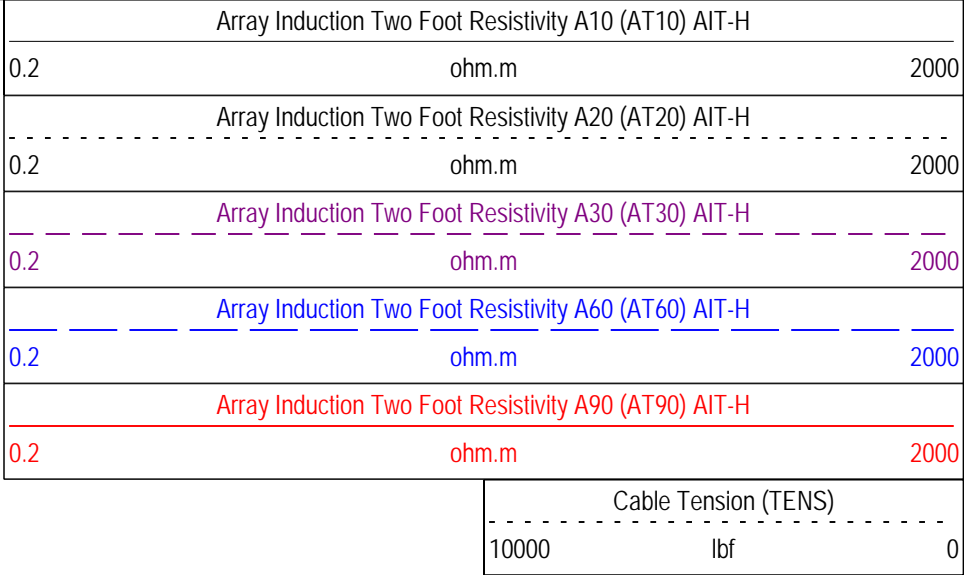
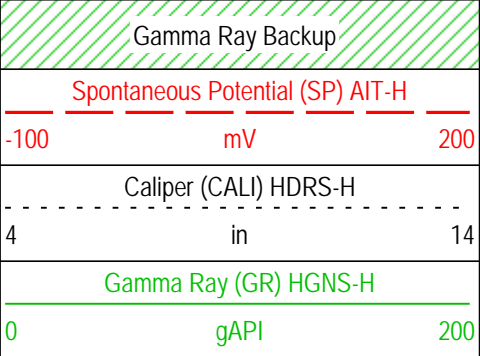
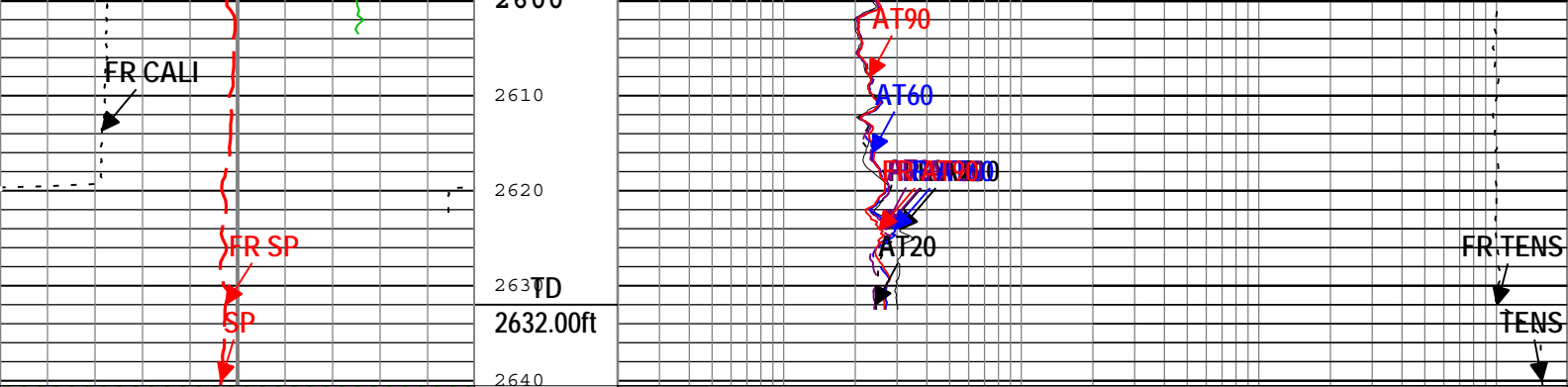












TIME_1900 - Time Marked every 60.00 (s)

— ICV - Integrated Cement Volume every 100.00 (ft3)

— ICV - Integrated Cement Volume every 10.00 (ft3)

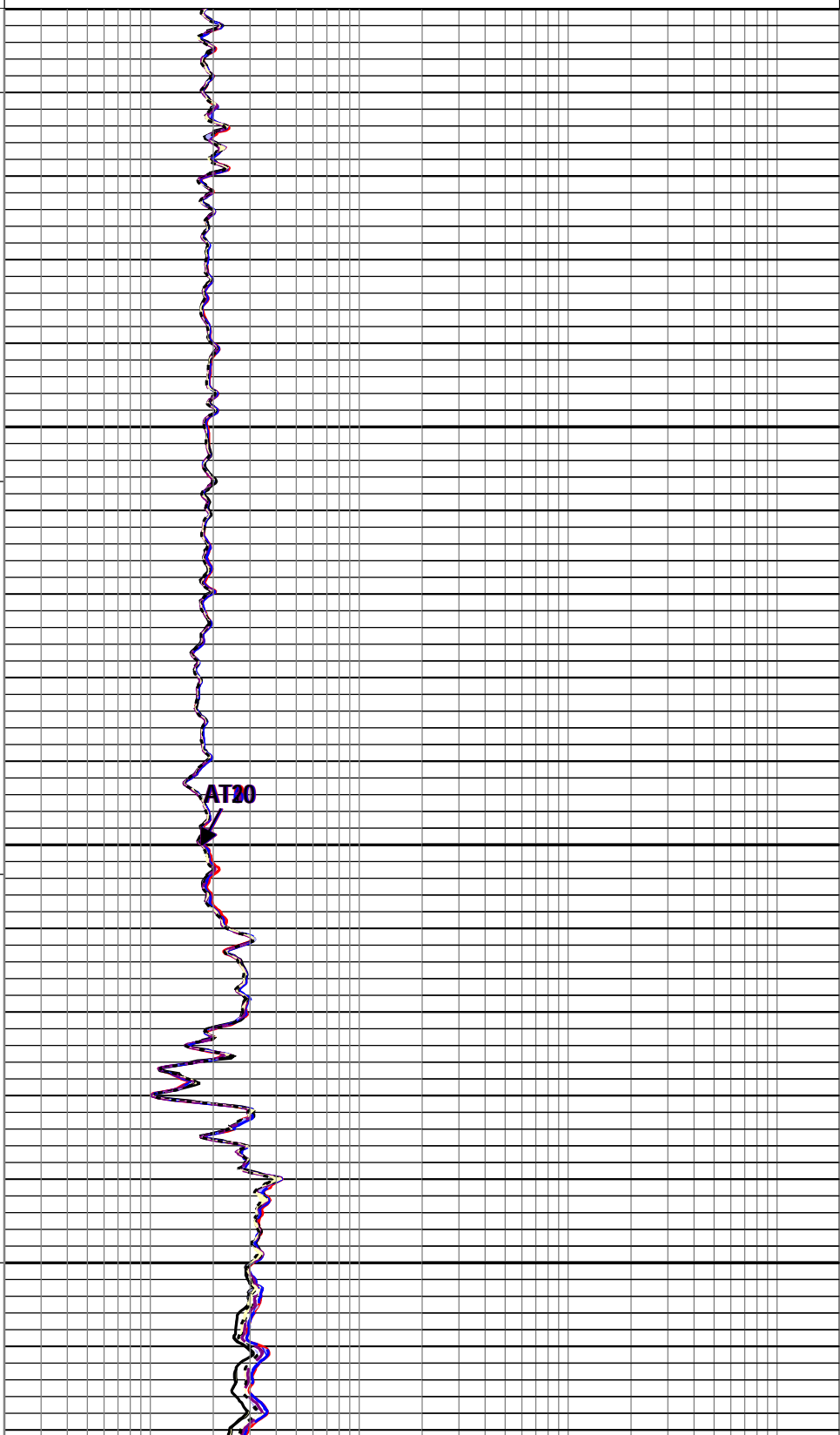
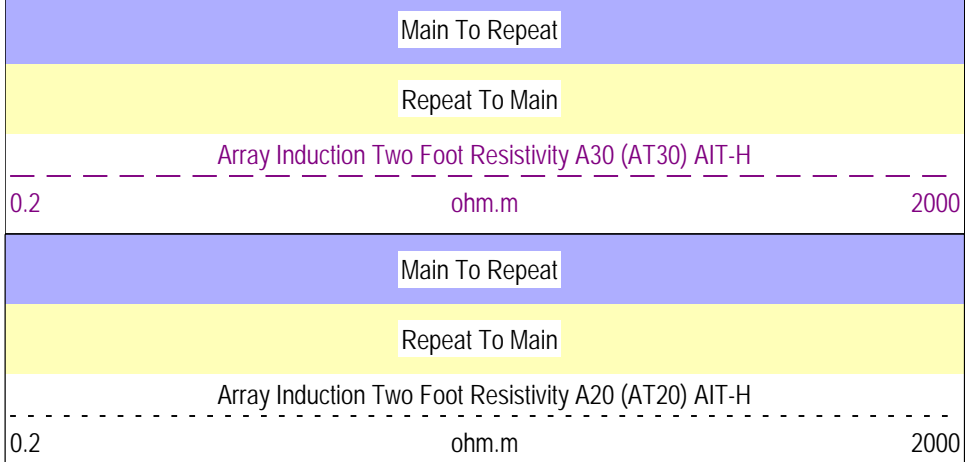
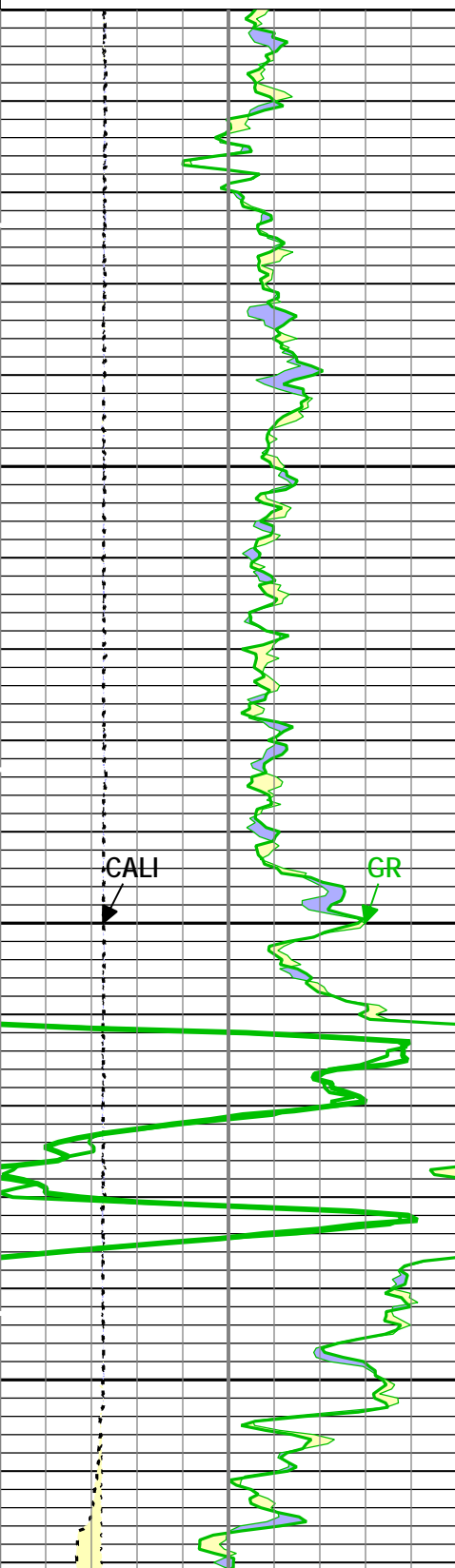
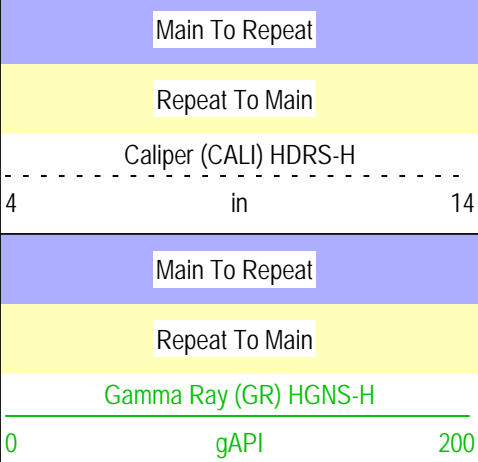
— IHV - Integrated Hole Volume every 100.00 (ft3)

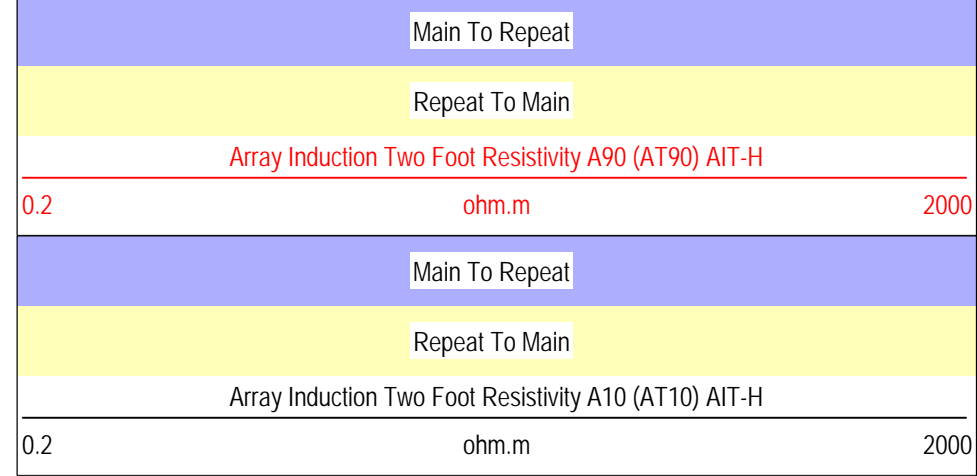
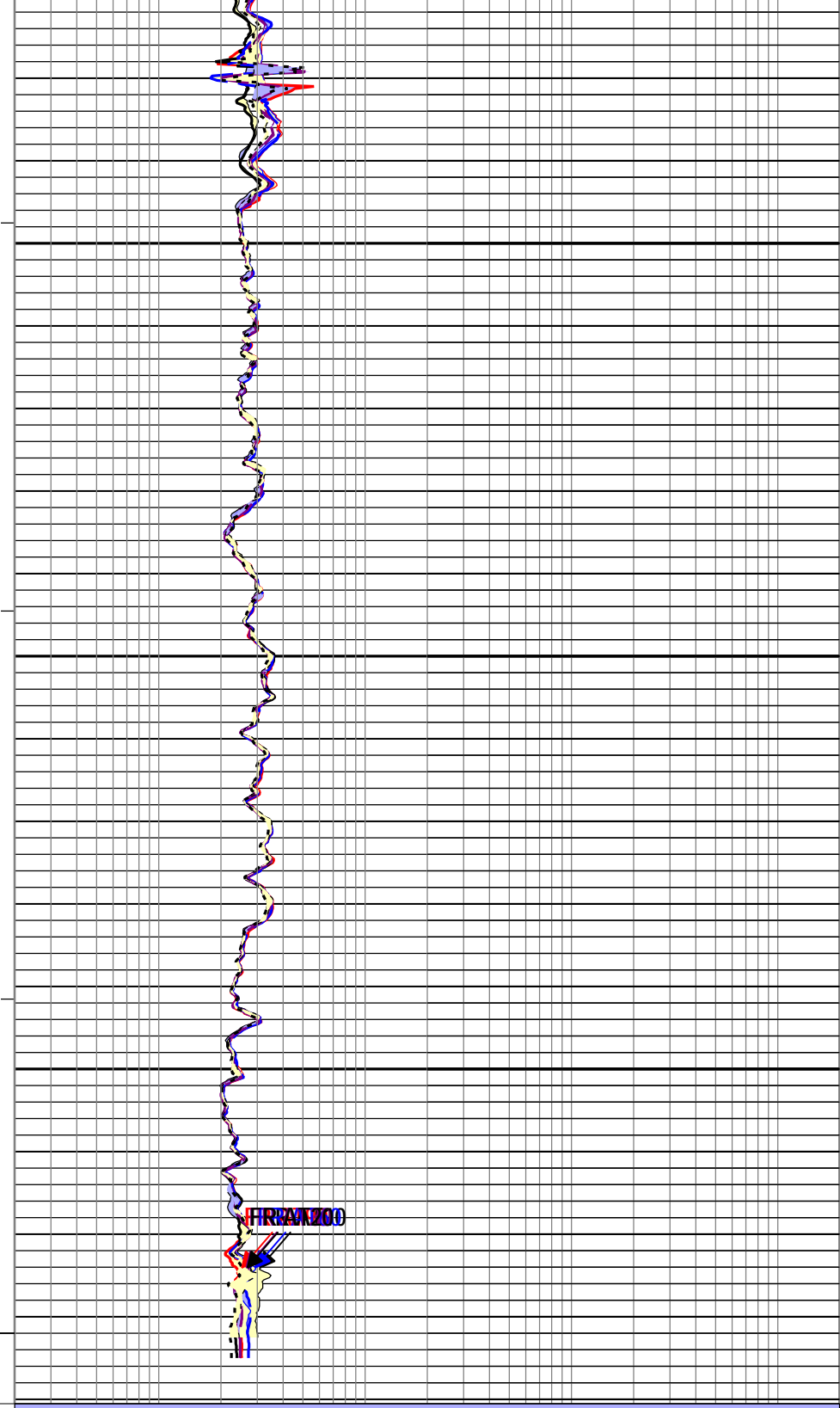
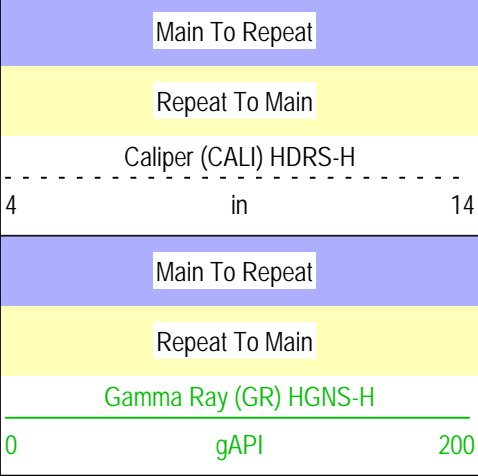
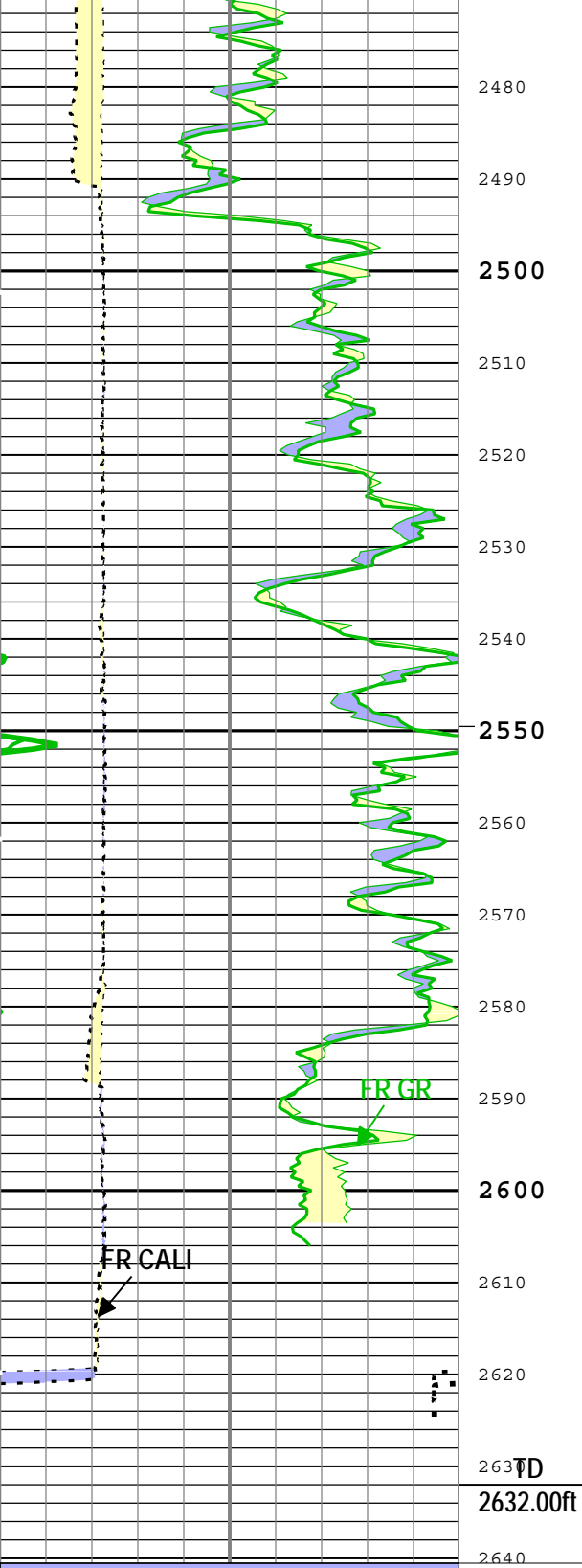
— IHV - Integrated Hole Volume every 10.00 (ft3)

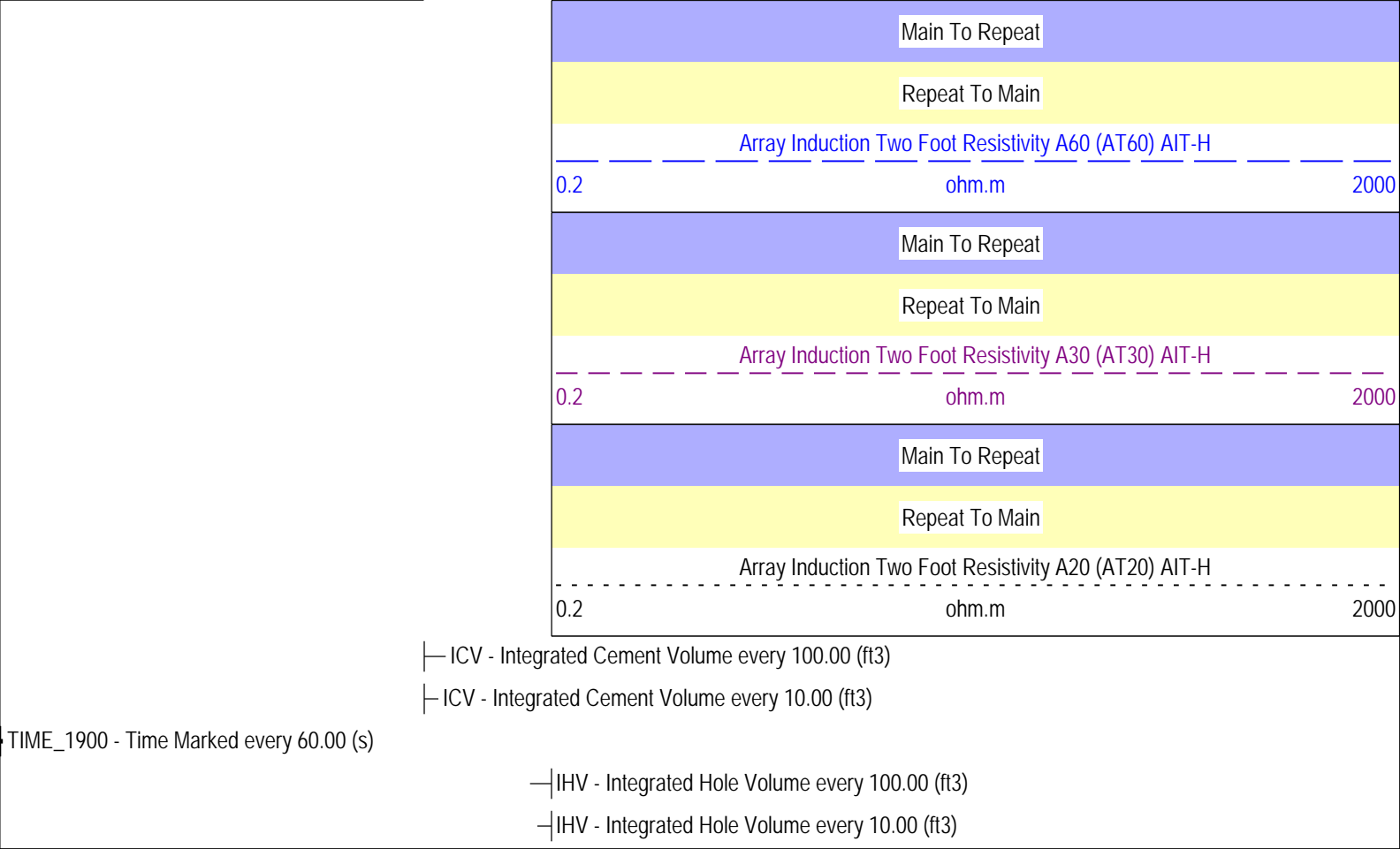
Description: AIT Basic Log Two Format: Log (EMD 5in Induction) Index Scale: 5 in per 100 ft Index Unit: ft Index Type: Measured Depth Creation Date: 27-Jan-2013 15:59:53

Channel Processing Parameters

Parameter	Description	Tool	Value	Unit
ABHM	Array Induction Borehole Correction Mode	AIT-H	Compute Standoff	
ABLM	Array Induction Basic Logs Mode	AIT-H	Normal	
ACDE	Array Induction Casing Detection Enable	AIT-H	Yes	
ASTA	Array Induction Tool Standoff	AIT-H	0.625	in
BARI	Barite Mud Presence Flag	Borehole	No	
BHS	Borehole Status (Open or Cased Hole)	Borehole	Open	
BS	Bit Size	WLSESSION	Depth Zoned	in
CALI_SHIFT	CALI Supplementary Offset	HDRS-H	0.062	in
CBLO	Casing Bottom (Logger)	WLSESSION	472	ft
CDEN	Cement Density	HGNS-H	2	g/cm3
CSODDRL	Casing Outer Diameter - Zoned along driller depths	WLSESSION	7	in
DFD	Drilling Fluid Density	Borehole	8.6	lbm/gal
FCD	Future Casing (Outer) Diameter	WLSESSION	4.25	in
GCSE_DOWN_PASS	Generalized Caliper Selection for WL Log Down Passes	Borehole	BS	
GCSE_UP_PASS	Generalized Caliper Selection for WL Log Up Passes	Borehole	CALI	
GRSE	Generalized Mud Resistivity Selection, from Measured or Computed Mud Resistivity	Borehole	AMF	
SOCO	Standoff Correction Option	HGNS-H	Yes	







Description: AIT Basic Log Two Format: EMD 5in Induction RA Index Scale: 5 in per 100 ft Index Unit: ft Index Type: Measured Depth Creation Date: 27-Jan-2013 15:59:55

Company:

Omimex Petroleum Inc.

Well:

Bledsoe 12-6-5-44

Field:

Ballyneal

County:

Yuma

State:

Colorado

Platform Express

Array Induction

with Linear Correlation

Schlumberger