

Company: Ominex Petroleum Inc.

Well: Bledsoe 12-6-5-44

Field: Ballyneal

County: Yuma State: Colorado

County: Yuma Field: Ballyneal Location: Sec. 6, Twp. 5N, Rng. 44W Well: Bledsoe 12-6-5-44 Company: Omimex Petroleum Inc.	Platform Express			
	Caliper			
	Cement Volume			
	Location:		Elev. K.B. 3759.50 ft	
	Sec. 6, Twp. 5N, Rng. 44W FSL 1981' x FWL 861' Lat: 40.430400, Long: -102.317290		G.L. 3753.50 ft D.F. 3758.50 ft	
API Serial No. 05-125-11965-0000	Permanent Datum:	Ground Level	Elev.: 3753.50 f	
	Log Measured From:	Kelly Bushing	6.00 ft above Perm.Datum	
	Drilling Measured From:	Kelly Bushing		
	Section: 6	Township: 5N	Range: 44W	

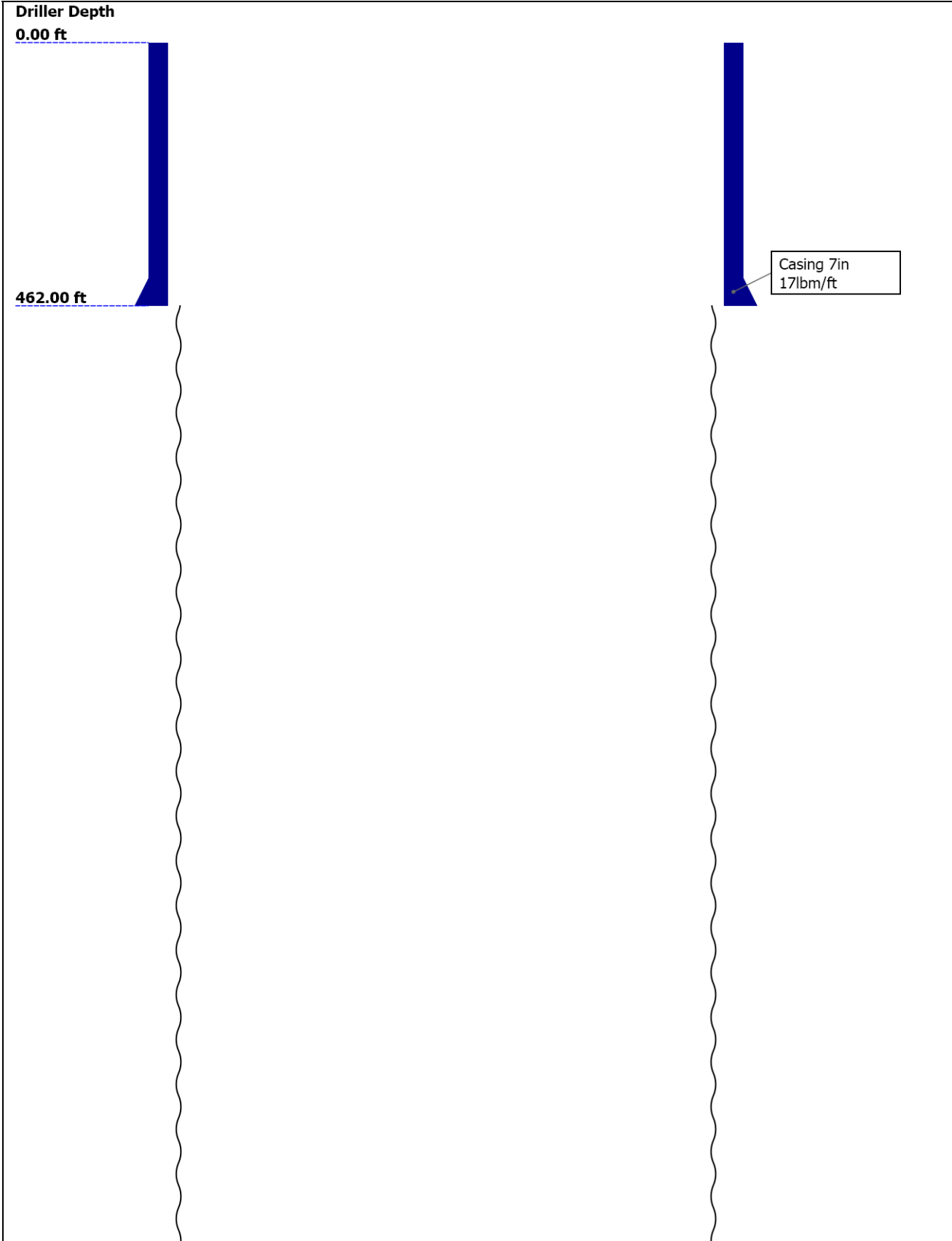
Disclaimer

THE USE OF AND RELIANCE UPON THIS RECORDED-DATA BY THE HEREIN NAMED COMPANY (AND ANY OF ITS AFFILIATES, PARTNERS, REPRESENTATIVES, AGENTS, CONSULTANTS AND EMPLOYEES) IS SUBJECT TO THE TERMS AND CONDITIONS AGREED UPON BETWEEN SCHLUMBERGER AND THE COMPANY, INCLUDING: (a) RESTRICTIONS ON USE OF THE RECORDED-DATA; (b) DISCLAIMERS AND WAIVERS OF WARRANTIES AND REPRESENTATIONS REGARDING COMPANY'S USE AND RELIANCE UPON THE RECORDED-DATA; AND (c) CUSTOMER'S FULL AND SOLE RESPONSIBILITY FOR ANY INFERENCE DRAWN OR DECISION MADE IN CONNECTION WITH THE USE OF THIS RECORDED-DATA.

Contents

- 1. Header
- 2. Disclaimer
- 3. Contents
- 4. Well Sketch
- 5. Borehole Size/Casing/Tubing Record
- 6. Operational Run Summary
- 7. Remarks and Equipment Summary
- 8. Depth Summary
- 9. Run 1
 - 9.1 Integration Summary
 - 9.2 Software Version
 - 9.3 Composite Summary
 - 9.4 Log (Noble East Caliper)
 - 9.5 Parameter Listing
- 10. Tail

Well Sketch



2637.00 ft

Open Hole 6.25in

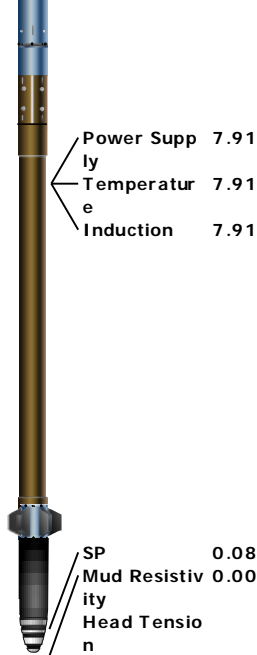
Borehole Size/Casing/Tubing Record

Bit						
Bit Size (in)	6.25					
Top Driller (ft)	462					
Top Logger (ft)	462					
Bottom Driller (ft)	2637					
Bottom Logger (ft)	2632					
Casing						
Size (in)	7					
Weight (lbm/ft)	17					
Inner Diameter (in)	6.54					
Top Driller (ft)	0					
Top Logger (ft)	0					
Bottom Driller (ft)	462					
Bottom Logger (ft)	472					

Operational Run Summary

Parameter (unit)	Run 1					
Date Log Started	27-Jan-2013					
Time Log Started	13:54:18					
Date Log Finished	27-Jan-2013					
Time Log Finished	15:33:47					
Top Log Interval (ft)						
Bottom Log Interval (ft)						
Total Depth (ft)	2632.00					
Max Hole Deviation (deg)						
Azimuth of Max Deviation (deg)						
Bit Size (in)	6.250					
Logging Unit Number	3030					
Logging Unit Location	Fort Morgan, CO					
Recorded By	Arvin Shi/Max Pace					
Witnessed By	Paul Dekaye					
Service Order Number	C6VJ-00045					

Remarks and Equipment Summary					
Run 1: Toolstring				Run 1: Remarks	
Equip name	Length	MP name	Offset		
LEH-QT	55.57				
LEH-QT					
EDTC-B	52.65				
EDTH-B					
EDTG-A					
EDTC-B					
		CTEM	49.15		
		ACCZ	0.00		
		HV	0.00		
		Gamma Ray	47.28		
		TelStatus	46.15		
A daptor_Head	46.15				
GPIT-F:1881	41.65				
GPIH-B					
GPIC-F:1881		GPIT-F Incl	40.23		
DHRU-F		inometer			
HGNS-H:4779	37.65	GPIT	0.00		
HGNH:3826		Temperatur	37.62		
NSR-F:5215		e			
NPV-N		GR	36.91		
HMCA-H					
HGNS-H:4779					
HACCZ-H:5736					
		CNL Porosit	30.57		
		y			
		HGNS	28.24		
		HMCA	28.24		
		Accelerome	0.00		
		ter			
HDRS-H:3863	28.24				
ECH-MEB:2898					
HRCC-H:3828					
HRMS-H:3863					
HRGD-H:3870					
Short Spacing					
Backscatter					
GSR-J:5471		HRCC	24.24		
Long Spacing:28					
620					
GPV-Q					
		MCFL	18.81		
		Caliper	18.33		
		TLD Density	17.94		
AIT-H:216	16.00				
AHIS:216					
AHRM:216					



Lengths are in ft
Maximum Outer Diameter = 5.000 in
Line: Sensor Location, Value: Gating Offset
All measurements are relative to TOOL_ZERO

Depth Summary

Depth Control Parameters	Run 1		
Conveyance Type	Wireline		
Rig Type	Land		
Depth Measuring Device	Run 1		
Type	IDW-B		
Wheel Correction 1	1		
Wheel Correction 2	0		
Tension Device	Run 1		
Type	CMTD-B/A		
Calibration Points	0		
Logging Cable	Run 1		
Type	7-46NT-XS		
Logging Cable Length (ft)	24000.00		

Run 1

Integration Summary

Output Channel(s)	Output Description	Input Parameter	Output Value	Unit
ICV	Integrated Cement Volume	GCSE_UP_PASS, FCD	284.75	ft3
IHV	Integrated Hole Volume	GCSE_UP_PASS	498.3	ft3

Software Version

Acquisition System	Version
MaxWell	3.1.9755.0
Application Patch	SP-20120723-3.1.9755.1112 EXP_APL-MASTAXIS-3.1.9755.1221

Computation	Description	Version	
Borehole	Borehole Ensemble provides common Borehole Parameters and Channels	3.1.9755.0	
DepthCorrection	DepthCorrection	3.1.9755.0	
Tool Elements	Description	Software Version	Firmware Version

Tool Elements	Description	Software version	Firmware version
HRCC-H	HILT High-Resolution Control Cartridge, 150 degC	3.1.9755.0	2.0
HGNS-H	HILT Gamma-Ray and Neutron Sonde, 150 degC	3.1.9755.0	2.0

Pass Summary

Run Name	Pass Objective	Direction	Top	Bottom	Start	Stop	Depth Shift	Include Parallel Data
Run 1	Log[5]:Up	Up	426.63 ft	2640.71 ft	27-Jan-2013 2:50:49 PM	27-Jan-2013 3:32:02 PM	0.00 ft	

All depths are referenced to toolstring zero

Log

Run 1: Log[5]:Up

Description: Format: Log (Noble East Caliper) Index Scale: 5 in per 100 ft Index Unit: ft Index Type: Measured Depth Creation Date: 27-Jan-2013 16:00:16

Channel	Source	Sampling
CALI	HDRS-H:HRCC-H:HRCC-H	1in
BS	Borehole	6in
CALI	HDRS-H:HRCC-H:HRCC-H	1in
GR_CAL	HGNS-H:HGNS-H:HGNS-H	6in
ICV	Borehole	6in
ICV	Borehole	6in
IHV	Borehole	6in
STIT	DepthCorrection	6in
TENS	WLWorkflow	6in
TIME_1900	WLWorkflow	0.1in

—IHV - Integrated Hole Volume every 100.00 (ft3)

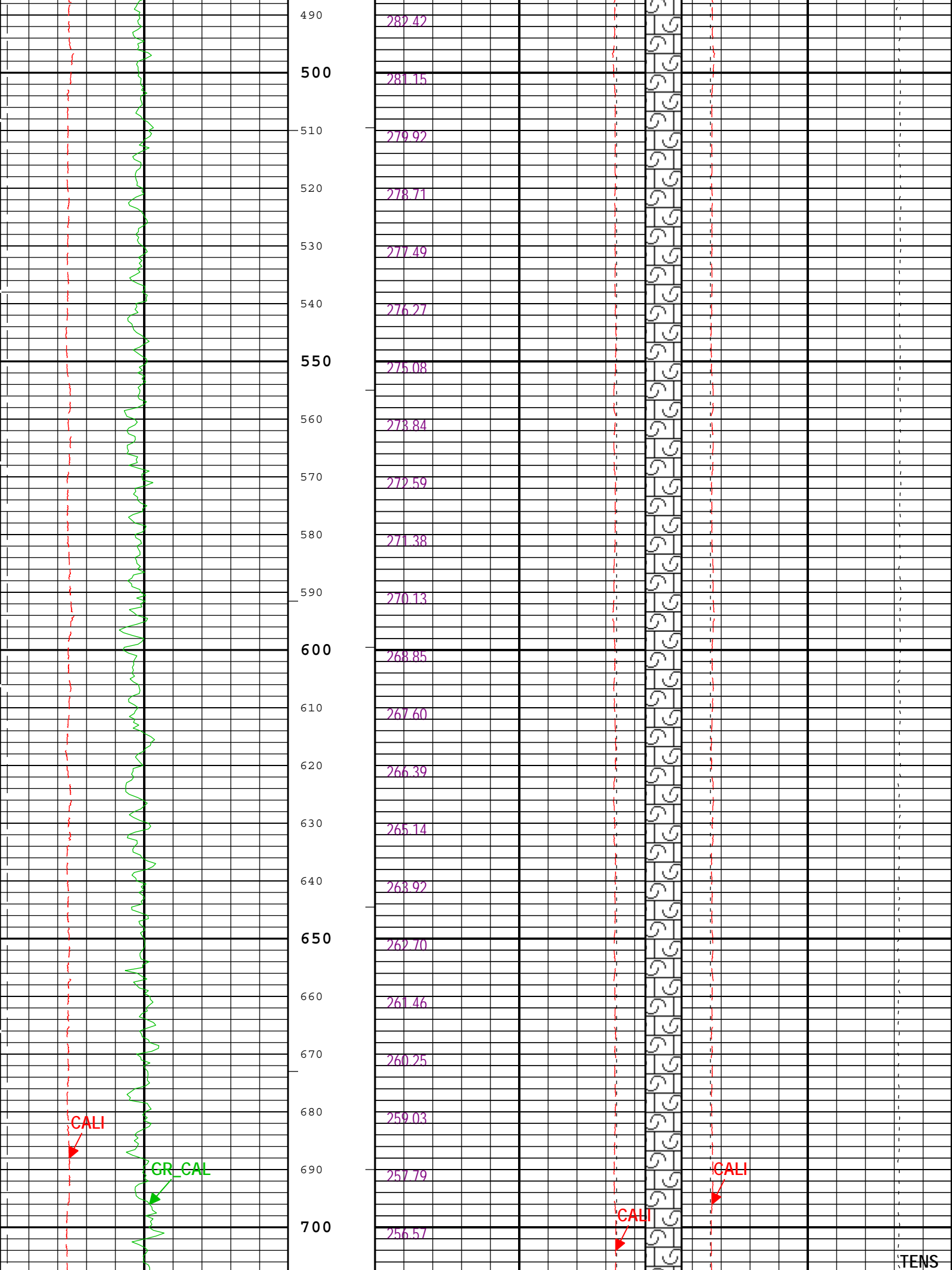
TIME_1900 - Time Marked every 60.00 (s)

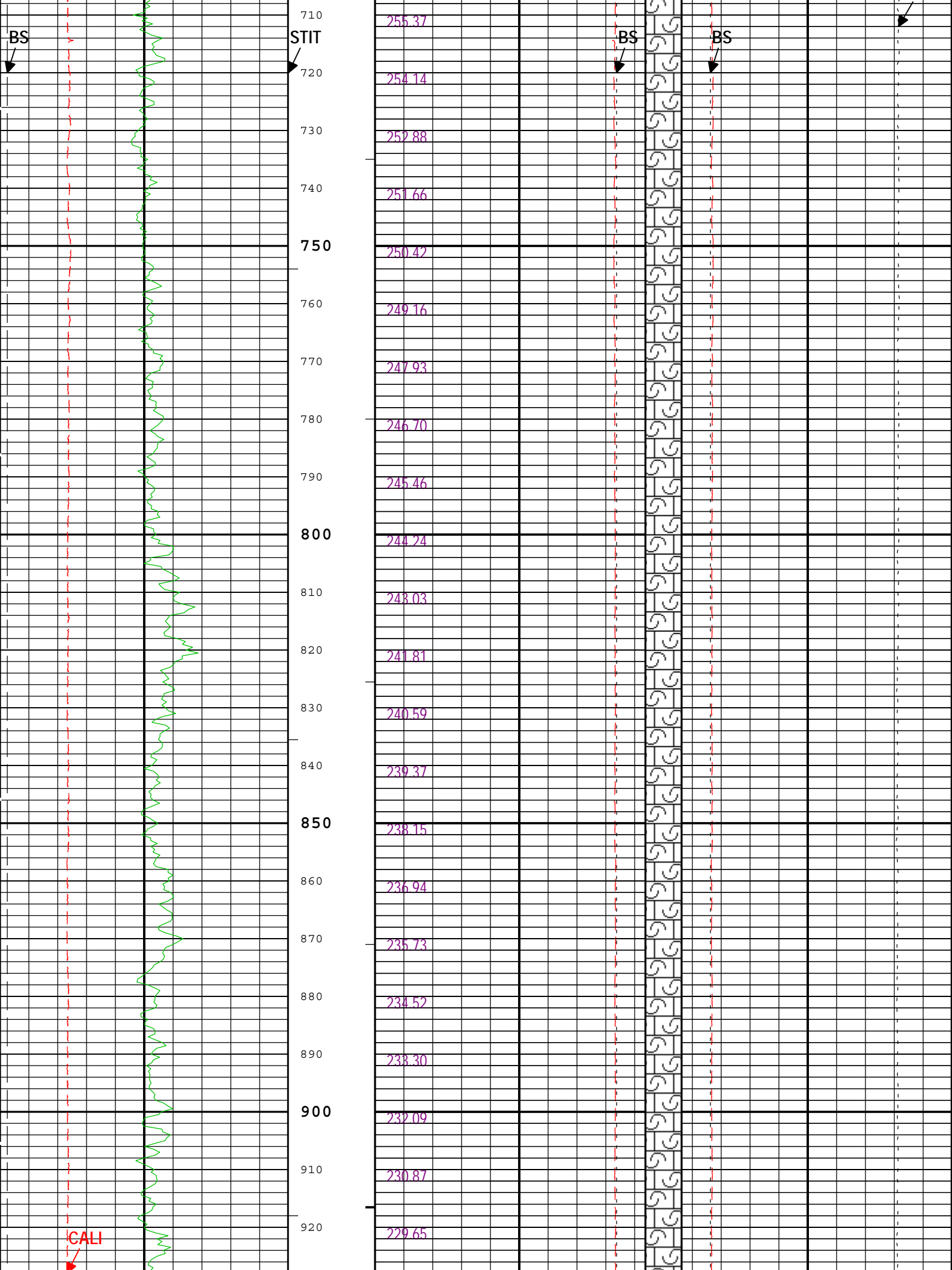
└ ICV - Integrated Cement Volume every 100.00 (ft3)

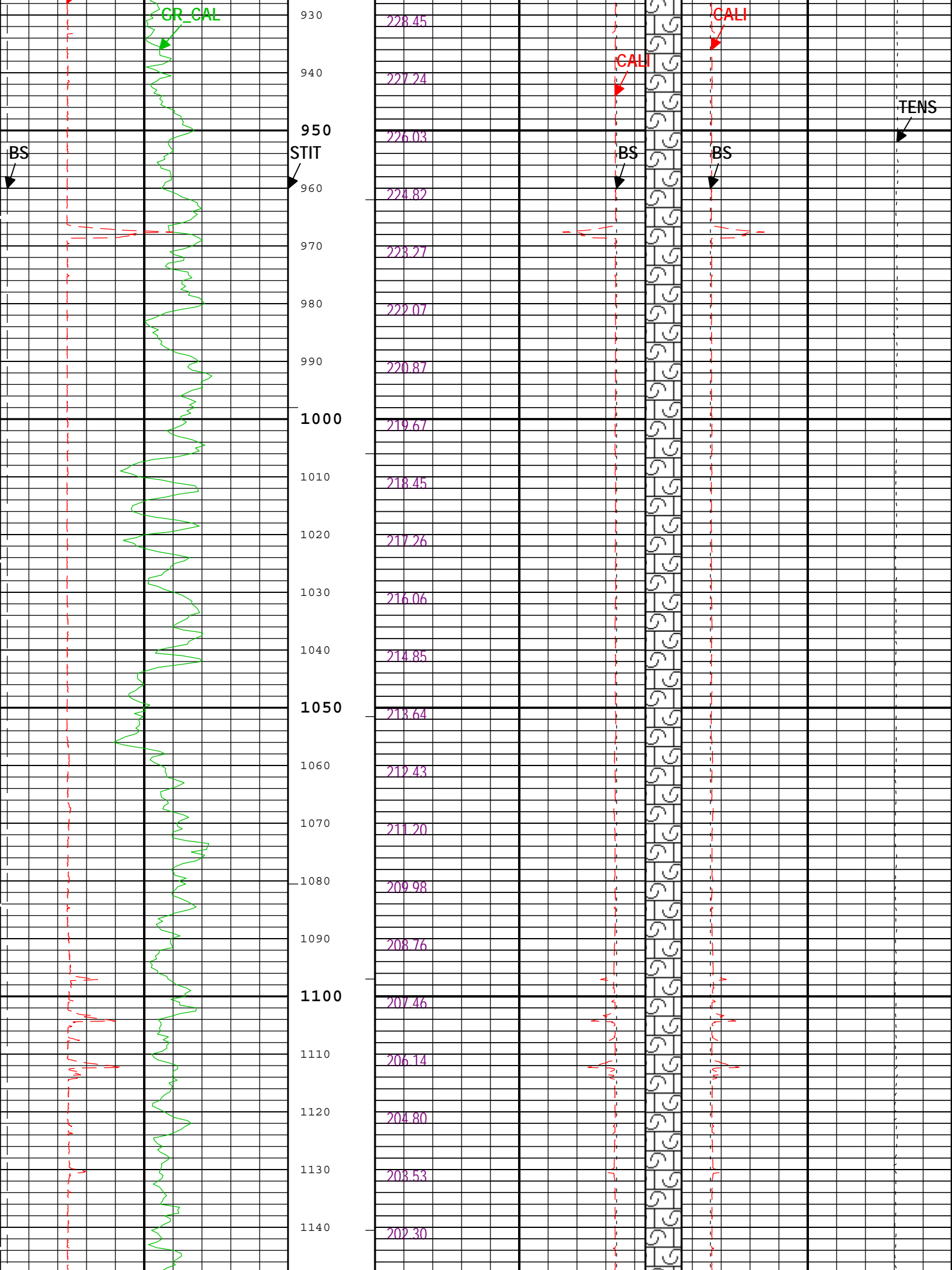
—IHV - Integrated Hole Volume every 10.00 (ft3)

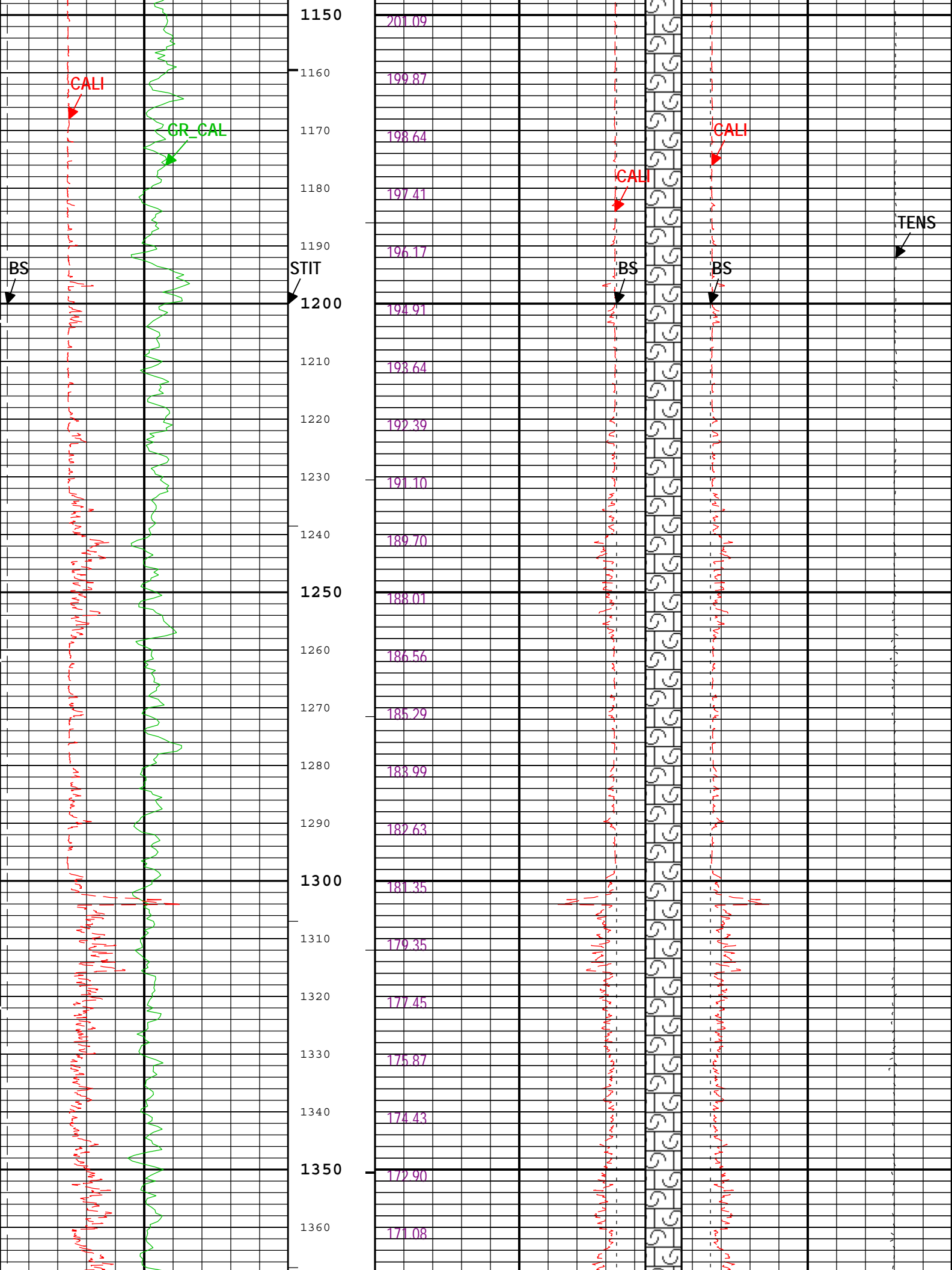
└ ICV - Integrated Cement Volume every 10.00 (ft3)

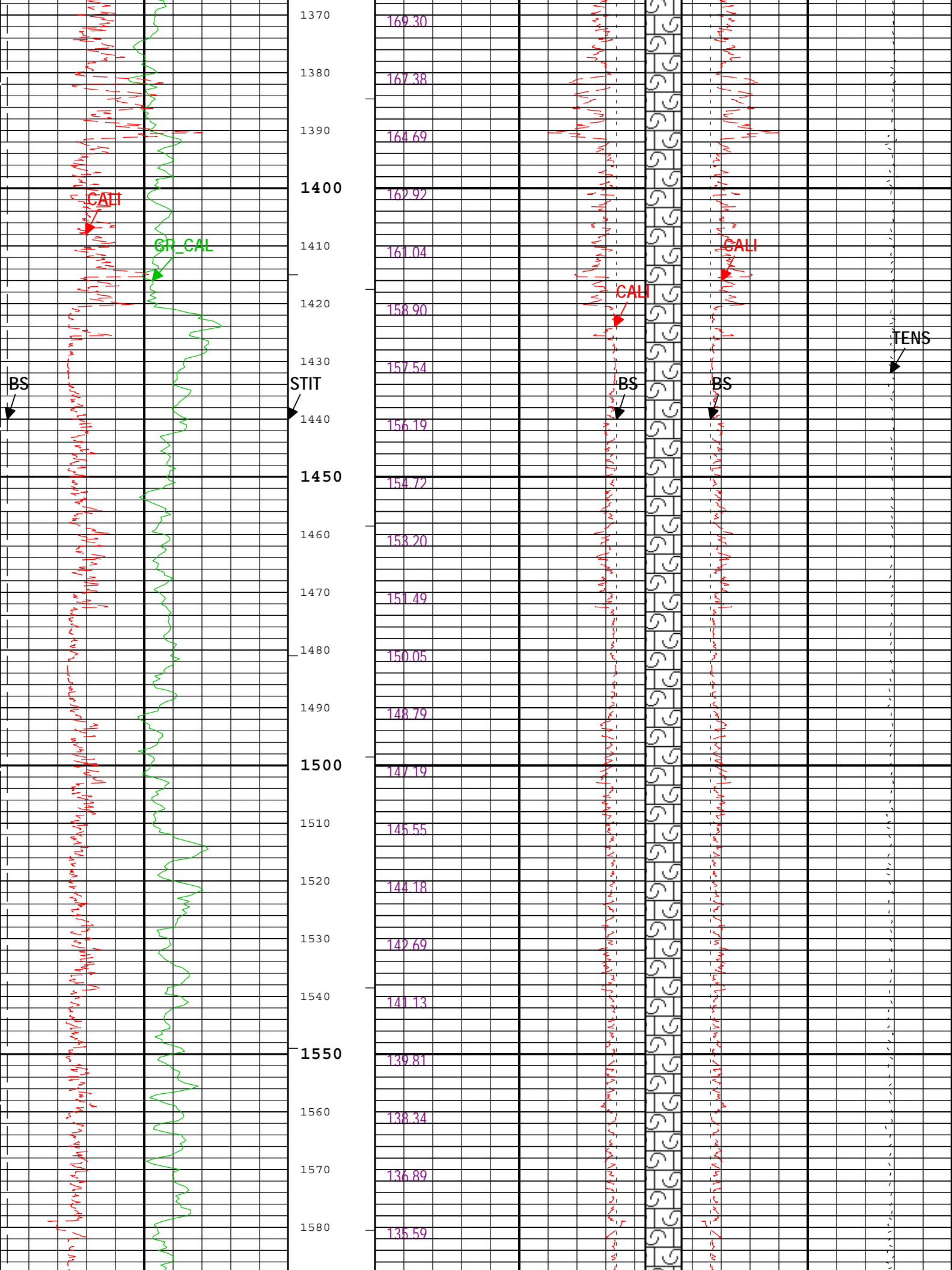
<div>Bit Size (BS)</div> <div>6 in 16</div>			<div>Integrated Cement Volume (ICV) ft3</div>			<div>Bit Size (BS)</div> <div>3 in 23</div>		
<div>Calibrated Gamma Ray (GR_CAL) HGNS-H</div> <div>0 gAPI 200</div>			<div>Bit Size (BS)</div> <div>23 in 3</div>			<div>Cable Tension (TENS)</div> <div>6000 lbf 0</div>		
<div>Caliper (CALI) HDRS-H</div> <div>4 in 14</div>			<div>Caliper (CALI) HDRS-H</div> <div>23 in 3 3</div>			<div>Caliper (CALI) HDRS-H</div> <div>3 in 23</div>		
<div>Stuck Tool Indicator, Total (STIT)</div> <div>0 ft 50</div>			<div>Future Casing (Outer) Diameter (FCD)</div> <div>-17 in 23</div>			<div>Future Casing (Outer) Diameter (FCD)</div> <div>23 in -17</div>		

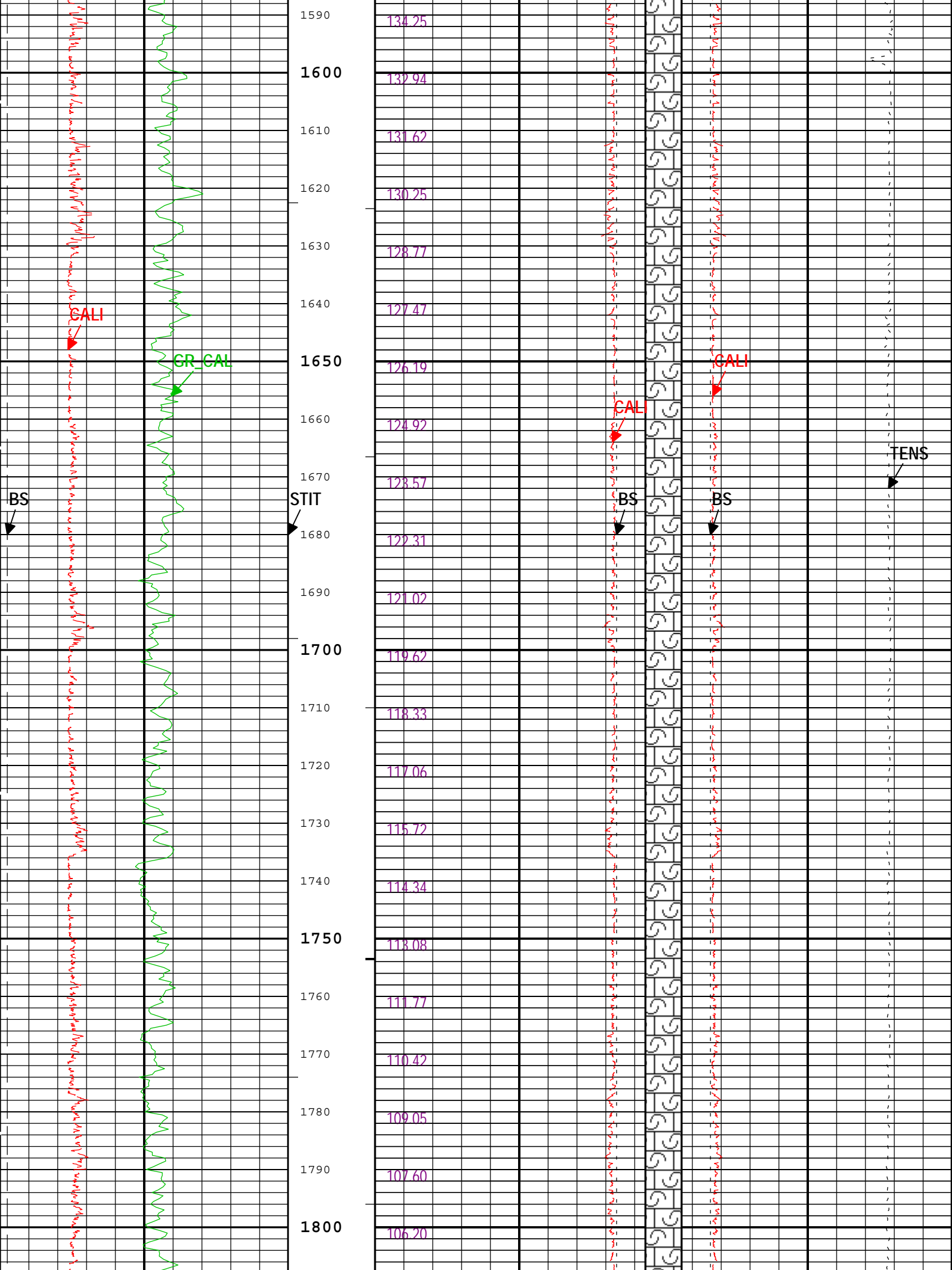


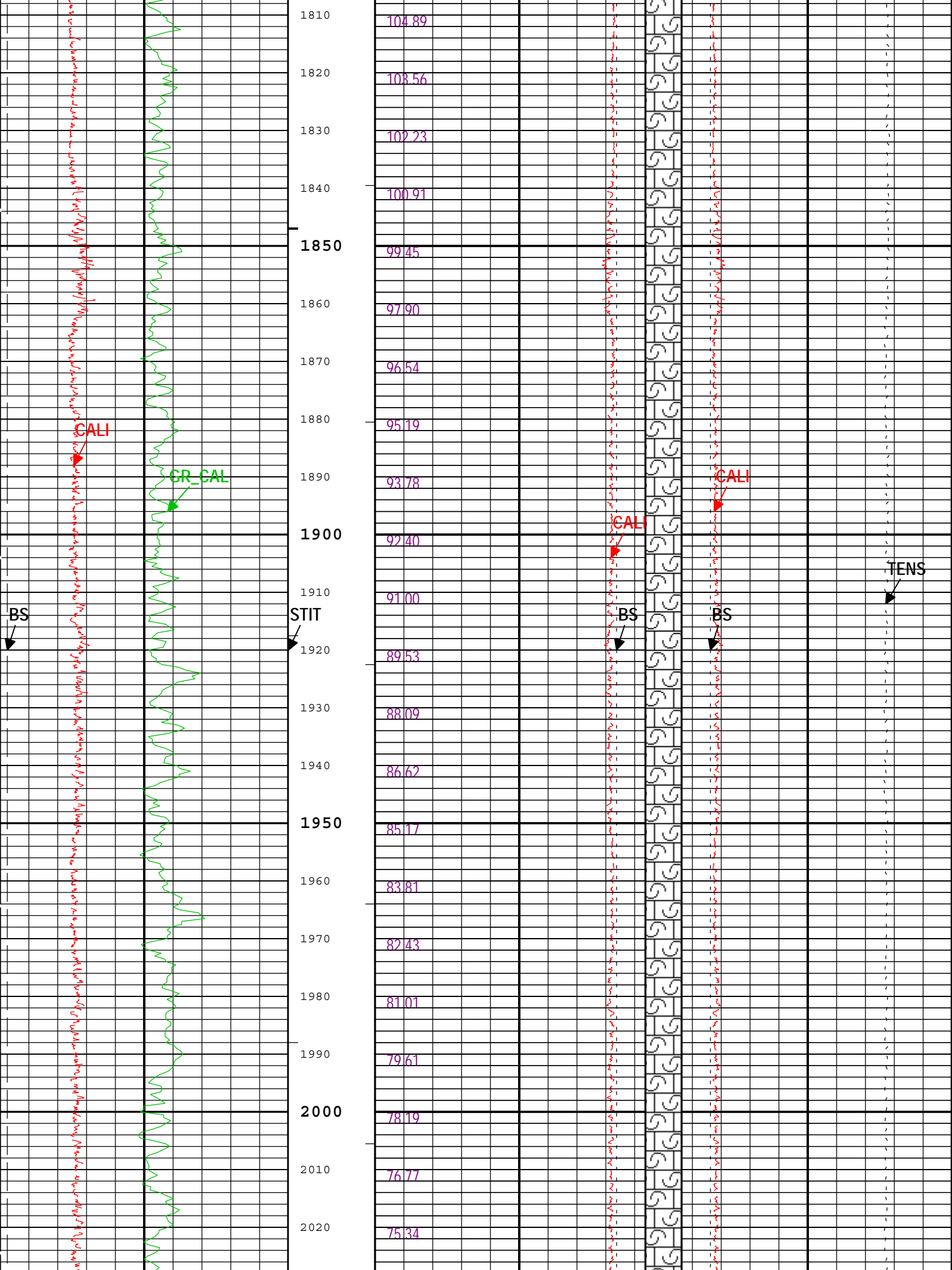


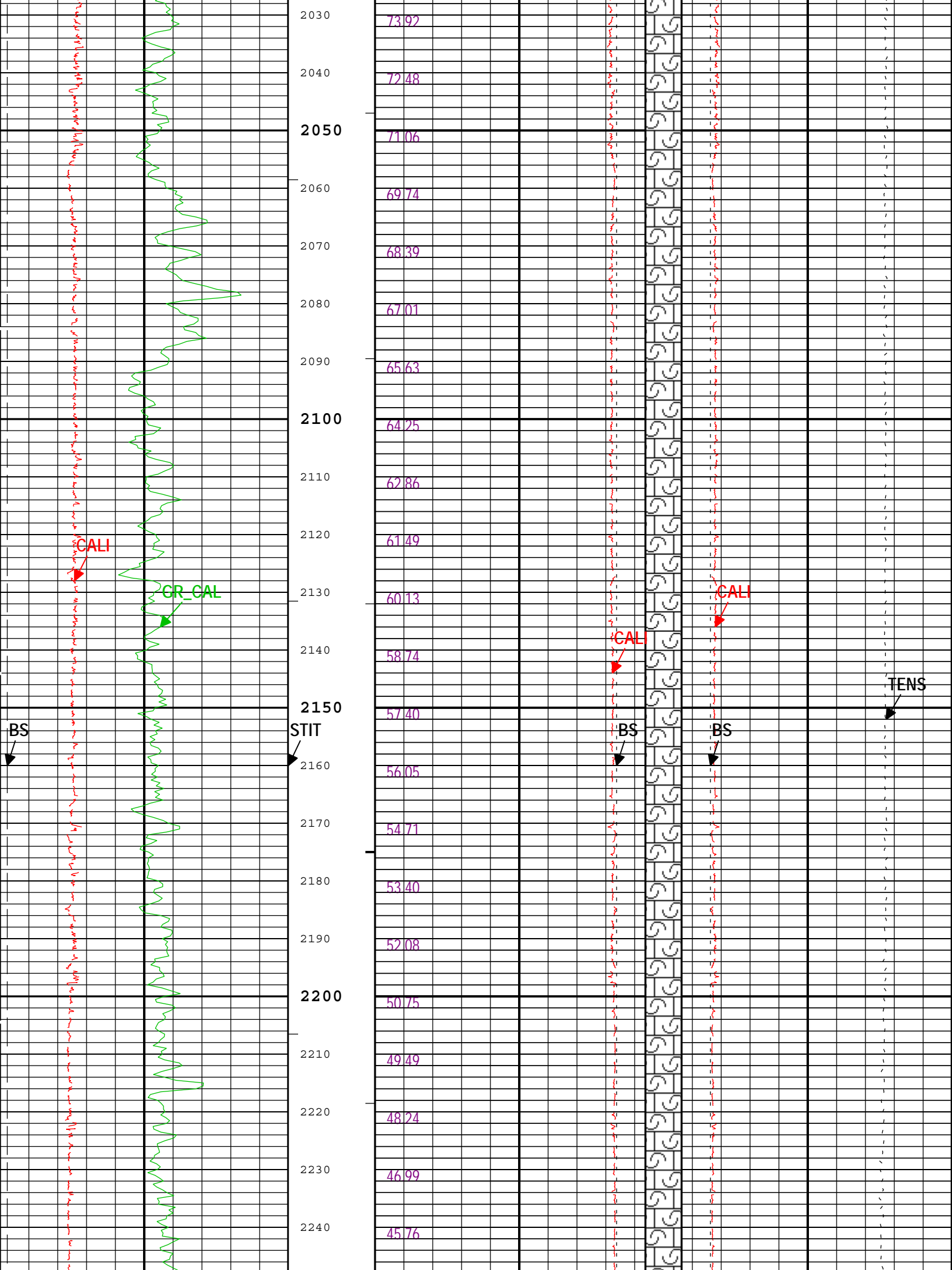


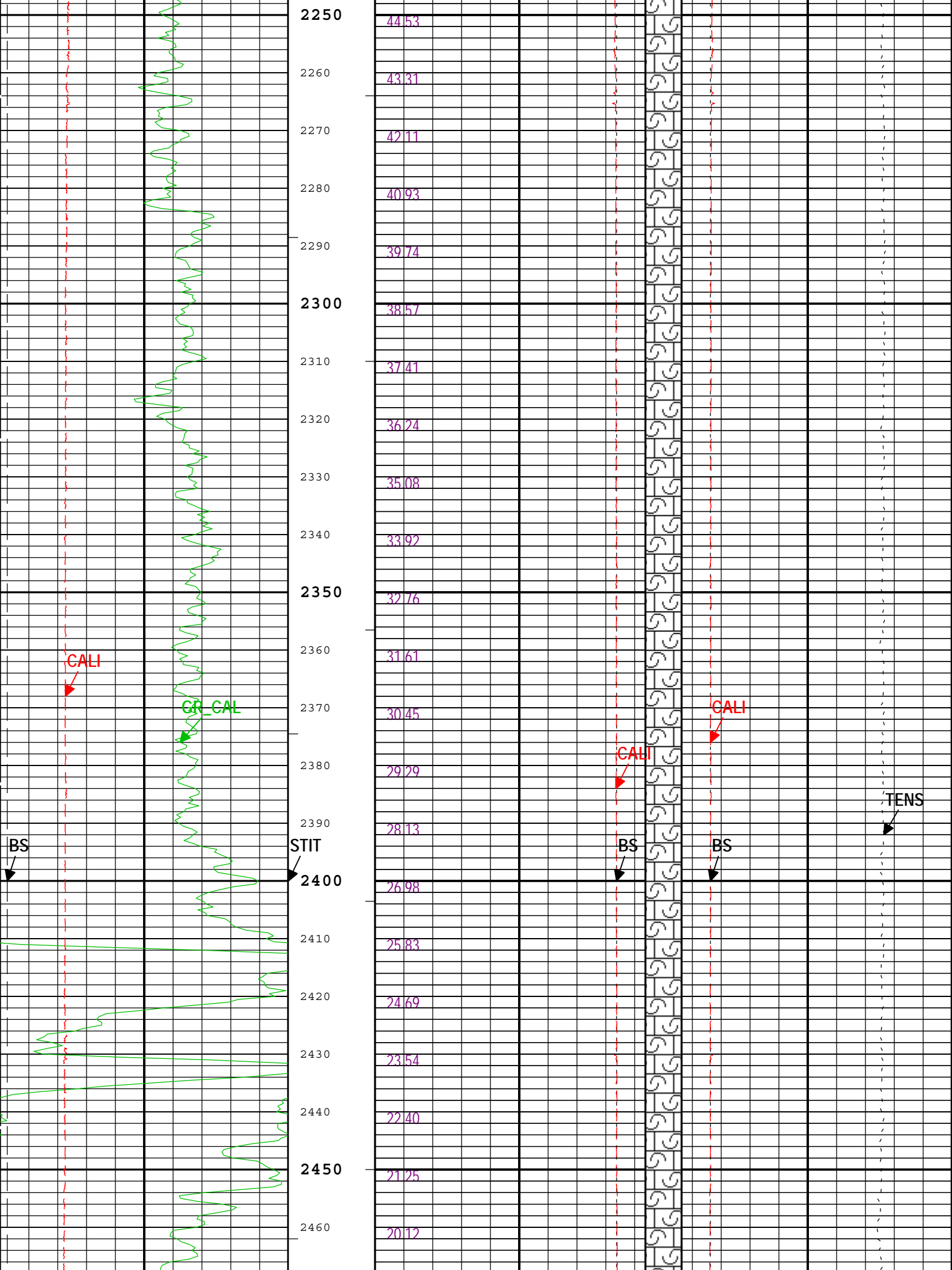


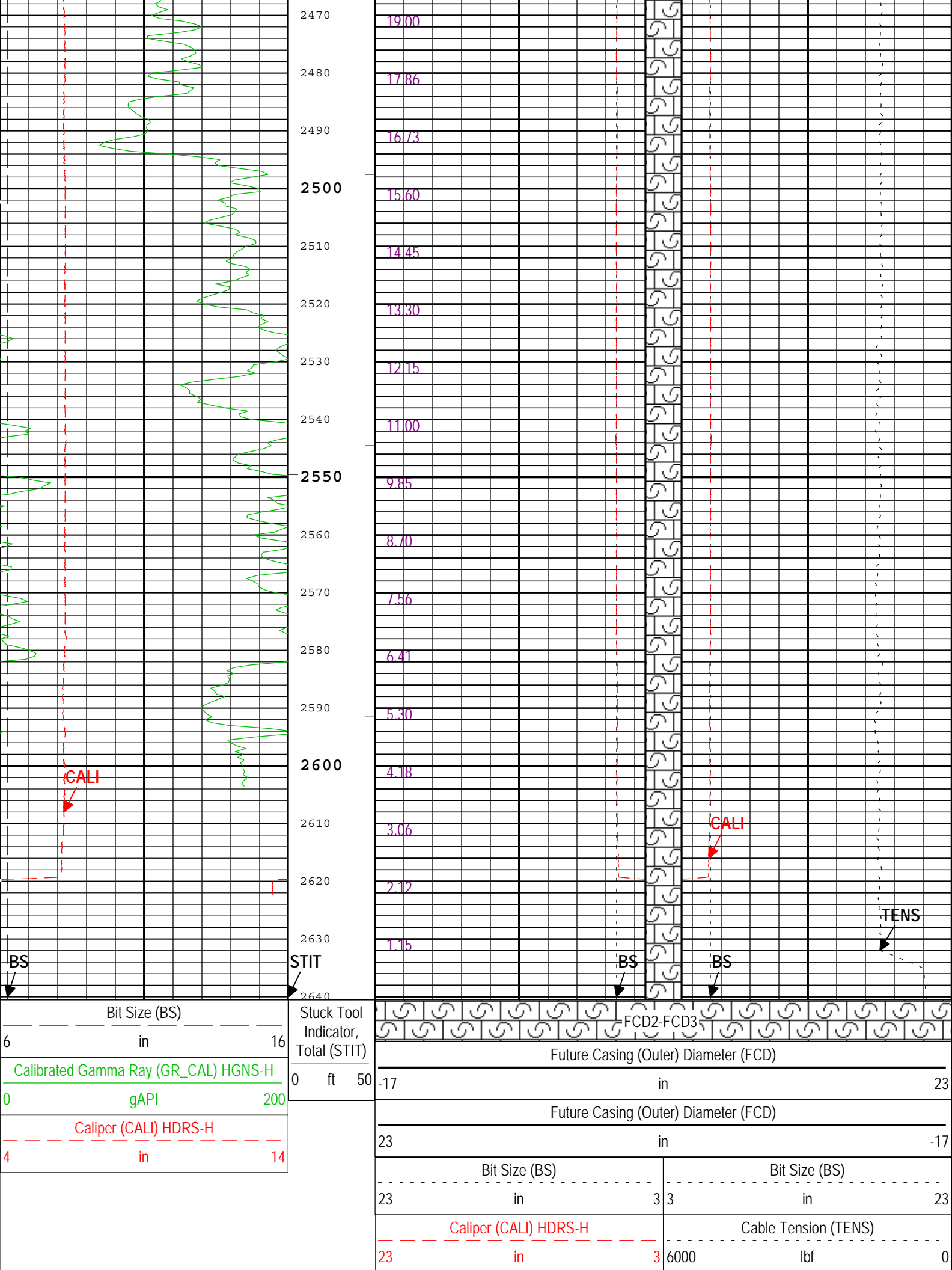












Integrated Cement
Volume (ICV)
ft3

Caliper (CALI) HDRS-H
3 in 23

ICV - Integrated Cement Volume every 10.00 (ft3)

IHV - Integrated Hole Volume every 10.00 (ft3)

ICV - Integrated Cement Volume every 100.00 (ft3)

TIME_1900 - Time Marked every 60.00 (s)

IHV - Integrated Hole Volume every 100.00 (ft3)

Description: Format: Log (Noble East Caliper) Index Scale: 5 in per 100 ft Index Unit: ft Index Type: Measured Depth Creation Date: 27-Jan-2013 16:00:16

Channel Processing Parameters

Parameter	Description	Tool	Value	Unit
BHS	Borehole Status (Open or Cased Hole)	Borehole	Open	
BS	Bit Size	WLSESSION	Depth Zoned	in
CALI_SHIFT	CALI Supplementary Offset	HDRS-H	0.062	in
CBLO	Casing Bottom (Logger)	WLSESSION	472	ft
CSODDRL	Casing Outer Diameter - Zoned along driller depths	WLSESSION	7	in
DC_MODE	Depth Correction Mode	DepthCorrection	Real-time	
FCD	Future Casing (Outer) Diameter	WLSESSION	4.25	in
GCSE_DOWN_PASS	Generalized Caliper Selection for WL Log Down Passes	Borehole	BS	
GCSE_UP_PASS	Generalized Caliper Selection for WL Log Up Passes	Borehole	CALI	
TD	Total Measured Depth	Borehole	2632	ft

Depth Zone Parameters

Parameter	Value	Start (ft)	Stop (ft)
BS	0	450	462
BS	6.25	462	2640.5

All depth are actual.

Tool Control Parameters

Parameter	Description	Tool	Value	Unit
MAX_LOG_SPEED	Toolstring Maximum Logging Speed	WLSESSION	3600	ft/h

Company: Omimex Petroleum Inc.

Schlumberger

Well: Bledsoe 12-6-5-44

Field: Ballyneal

County: Yuma

State: Colorado

Platform Express

Caliper

Cement Volume