

BERRY PETROLEUM COMPANY

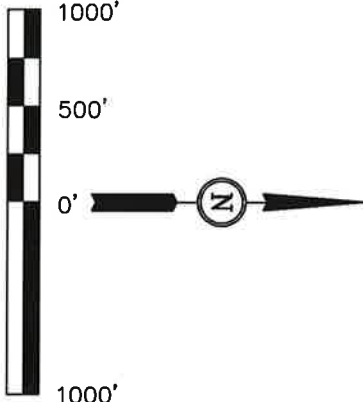
Well location, SCHOOL HOUSE POINT OM01A A21 696, located as shown in the NE 1/4 NE 1/4 of Section 21, T6S, R96W, 6th P.M., Garfield County, Colorado.

BASIS OF ELEVATION

SPOT ELEVATION AT THE NORTHWEST CORNER OF SECTION 30, T5S, R95W, 6th P.M. TAKEN FROM THE FORKED GULCH QUADRANGLE, COLORADO, GARFIELD COUNTY, 7.5 MINUTE SERIES (TOPOGRAPHICAL MAP) PUBLISHED BY THE UNITED STATES DEPARTMENT OF THE INTERIOR, GEOLOGICAL SURVEY. SAID ELEVATION IS MARKED AS BEING 5966 FEET.

BASIS OF BEARINGS

BASIS OF BEARINGS IS A G.P.S. OBSERVATION.



CERTIFICATE

THIS IS TO CERTIFY THAT THE ABOVE PLAT WAS PREPARED FROM FIELD NOTES OF ACTUAL SURVEYS MADE BY ME OR UNDER MY SUPERVISION AND THAT THE SAME ARE TRUE AND CORRECT TO THE BEST OF MY KNOWLEDGE AND BELIEF.

Revised: 09-19-08 D.R.B.

REGISTERED LAND SURVEYOR
REGISTRATION NO. 17492
STATE OF COLORADO

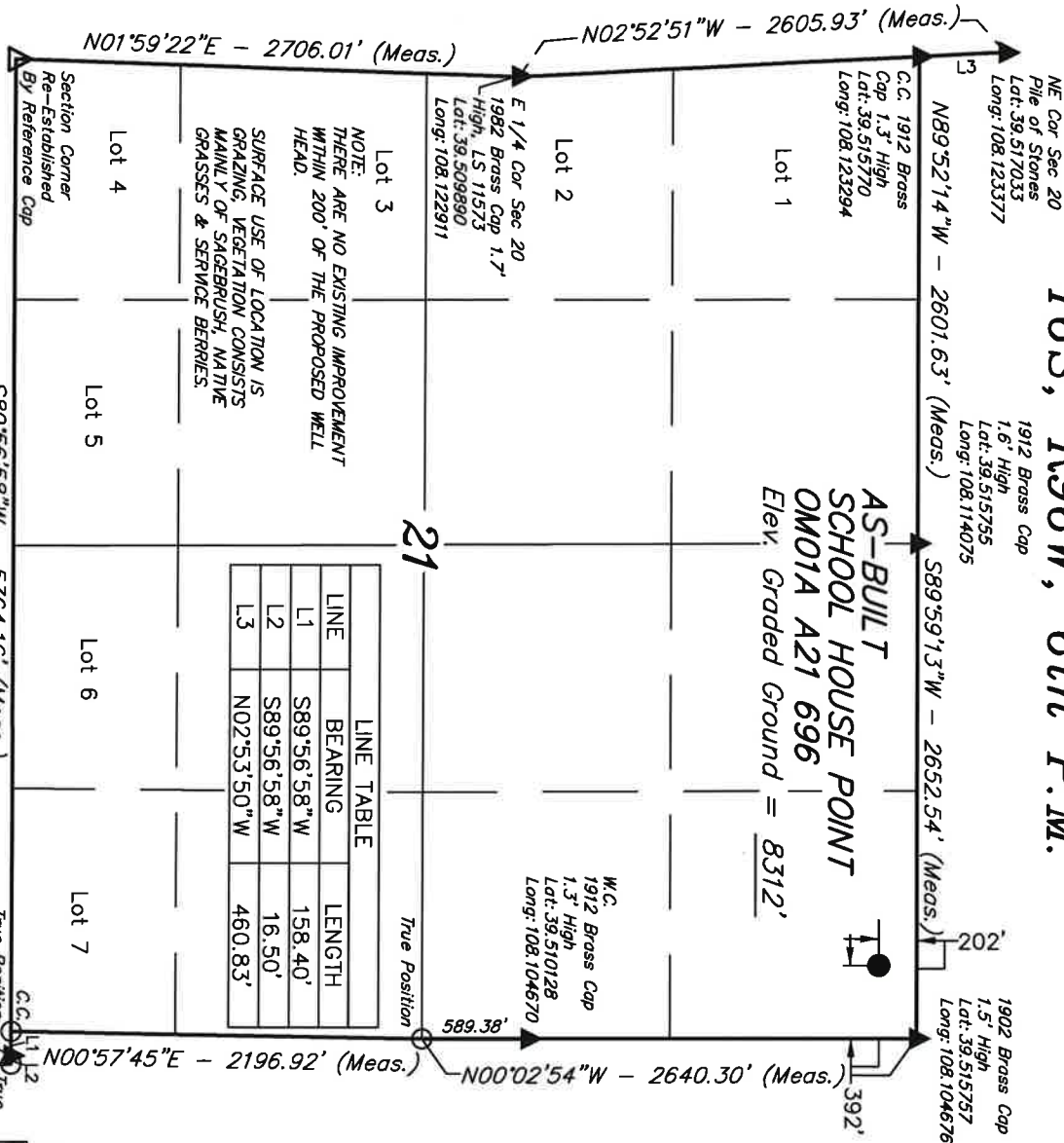
UTAH ENGINEERING & LAND SURVEYING
85 SOUTH 200 EAST - VERNAL, UTAH 84078
(435) 789-1017

SCALE 1" = 1000'

PARTY G.O. C.R. D.R.B. REFERENCES G.L.O. PLAT

WEATHER WARM FILE BERRY PETROLEUM COMPANY

T6S, R96W, 6th P.M.



LINE	BEARING	LENGTH
L1	S89°56'58"W	158.40'
L2	S89°56'58"W	16.50'
L3	N02°53'50"W	460.83'

LEGEND:

- = 90° SYMBOL
- = PROPOSED WELL HEAD.
- = SECTION CORNERS LOCATED.