

# KERR-MCGEE OIL & GAS ONSHORE LP

Location: COLORADO Slot: SLOT#04 BADDING 26N-26HZ (350'FSL & 626'FEL, SEC.26)  
Field: WELD COUNTY (KERR MCGEE) Well: BADDING 26N-26HZ  
Facility: SEC.26-T2N-R66W Wellbore: BADDING 26N-26HZ PWB

Plot reference wellpath is BADDING 26N-26HZ (PERMIT REV-1) PWP

True vertical depths are referenced to Rig on SLOT#04 BADDING 26N-26HZ (350'FSL & 626'FEL, SEC.26) (RKB)	Grid System: NAD83 / Lambert Colorado SP, Northern Zone (501), US feet
Measured depths are referenced to Rig on SLOT#04 BADDING 26N-26HZ (350'FSL & 626'FEL, SEC.26) (RKB)	North Reference: True north
Rig on SLOT#04 BADDING 26N-26HZ (350'FSL & 626'FEL, SEC.26) to Mean Sea Level: 5132ft	Scale: True distance
Mean Sea Level to Mud line (At Slot: SLOT#04 BADDING 26N-26HZ (350'FSL & 626'FEL, SEC.26)): 0 feet	Depths are in feet
Coordinates are in feet referenced to Slot	Created by: wjlgf02 on 8/12/2013

## Location Information

Facility Name	Grid East (US ft)	Grid North (US ft)	Latitude	Longitude
SEC.26-T2N-R66W	3213323.993	1281285.671	40°06'10.811"N	104°44'14.582"W
Spot	Local N (ft)	Local E (ft)	Grid East (US ft)	Grid North (US ft)
SLOT#04 BADDING 26N-26HZ (350'FSL & 626'FEL, SEC.26)	0.30	78.09	3213402.019	1281286.647
Rig on SLOT#04 BADDING 26N-26HZ (350'FSL & 626'FEL, SEC.26) to Mud line (At Slot: SLOT#04 BADDING 26N-26HZ (350'FSL & 626'FEL, SEC.26))				5132ft
Mean Sea Level to Mud line (At Slot: SLOT#04 BADDING 26N-26HZ (350'FSL & 626'FEL, SEC.26))				0ft
Rig on SLOT#04 BADDING 26N-26HZ (350'FSL & 626'FEL, SEC.26) to Mean Sea Level				5132ft

## Survey Program

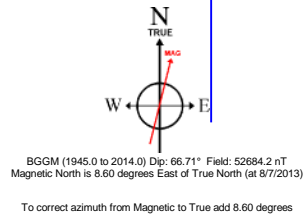
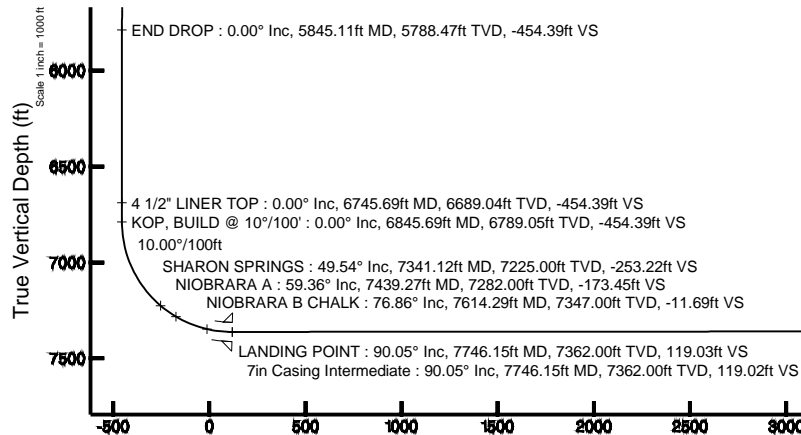
Start MD (ft)	End MD (ft)	Tool	Model	Log Name/Comment	Wellbore
17.00	7746.15	NaviTrak	NaviTrak (Standard)		BADDING 26N-26HZ PWB
7746.15	12740.72	OnTrak	OnTrak (Standard)		BADDING 26N-26HZ PWB

## Well Profile Data

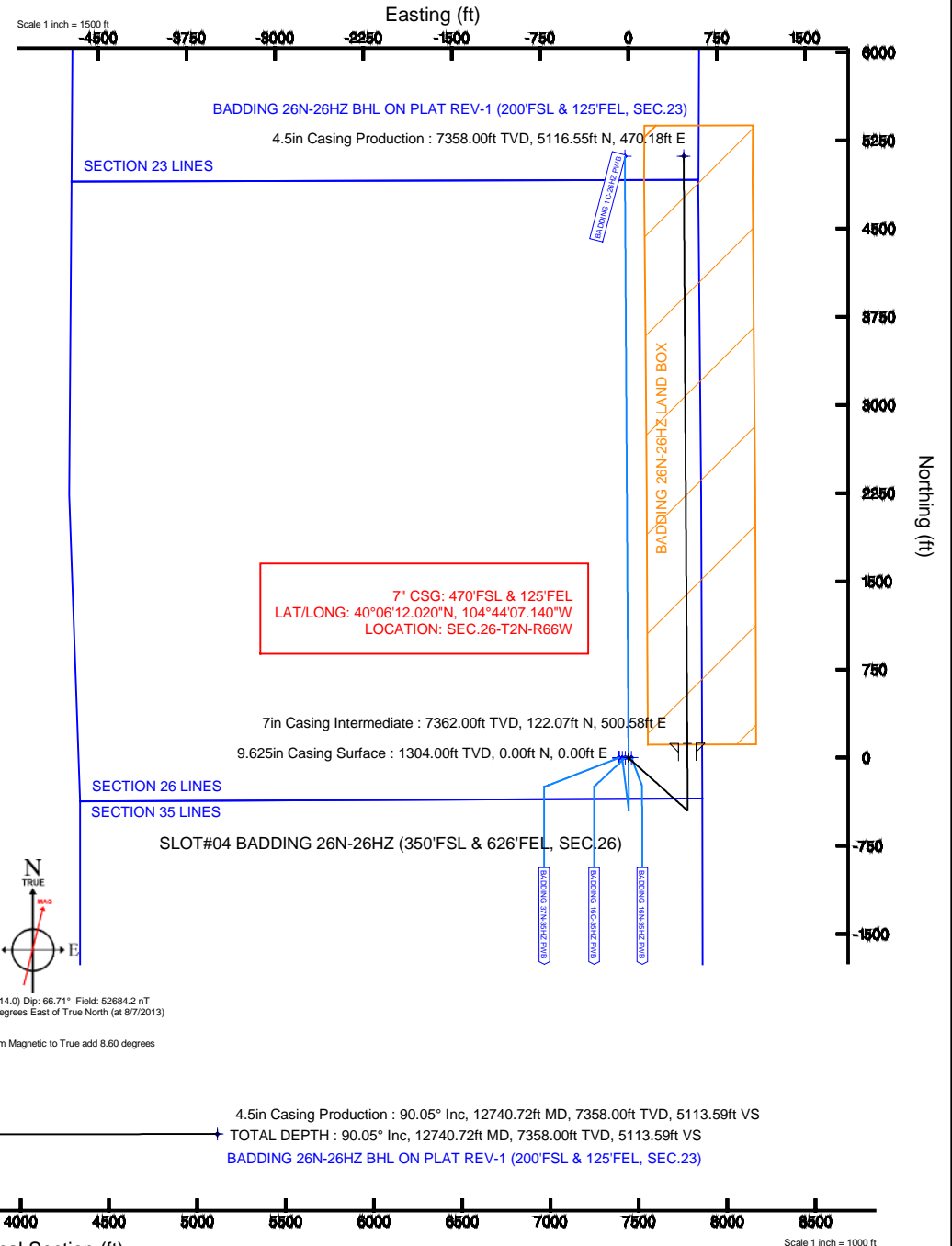
Design Comment	MD (ft)	Inc (°)	Az (°)	TVD (ft)	Local N (ft)	Local E (ft)	DLS (°/100ft)	VS (ft)
TIE-ON	17.00	0.000	131.840	17.00	0.00	0.00	0.00	0.00
BEGIN NUDGE	1450.00	0.000	131.840	1450.00	0.00	0.00	0.00	0.00
END NUDGE	1950.00	10.000	131.840	1947.47	-29.03	32.42	2.00	-29.23
BEGIN DROP	5345.11	10.000	131.840	5291.00	-422.30	471.65	0.00	-425.16
END DROP	5845.11	0.000	359.651	5788.47	-451.33	504.07	2.00	-454.39
KOP, BUILD @ 10°/100'	6845.69	0.000	359.651	6789.05	-451.33	504.07	0.00	-454.39
LANDING POINT	7746.15	90.046	359.651	7362.00	122.08	500.58	10.00	119.03
TOTAL DEPTH	12740.72	90.046	359.651	7358.00	5116.55	470.18	0.00	5113.59

## Targets

Name	MD (ft)	TVD (ft)	Local N (ft)	Local E (ft)	Grid East (US ft)	Grid North (US ft)	Latitude	Longitude
BADDING SECTION 26 LINES		0.00	-0.30	-78.02	3213334.01	1281285.67	40°06'10.811"N	104°44'14.582"W
SECTION 23 LINES		17.00	9904.14	-277.61	3213039.23	1281187.62	40°07'48.688"N	104°44'17.156"W
BADDING 26N-26HZ BHL ON PLAT REV-1 (200'FSL & 125'FEL, SEC.23)	12740.72	7358.00	5116.55	470.18	3213828.15	1286406.84	40°07'01.376"N	104°44'07.530"W
BADDING 26N-26HZ LAND BOX		7400.00	0.00	0.00	3213402.02	1281286.65	40°06'10.814"N	104°44'13.582"W



Azimuth 359.65° with reference 0.00 N, 0.00 E





# Planned Wellpath Report

BADDING 26N-26HZ (PERMIT REV-1) PWP

Page 1 of 6



## REFERENCE WELLPATH IDENTIFICATION

Operator	KERR-MCGEE OIL & GAS ONSHORE LP	Slot	SLOT#04 BADDING 26N-26HZ (350'FSL & 626'FEL, SEC.26)
Area	COLORADO	Well	BADDING 26N-26HZ
Field	WELD COUNTY (KERR MCGEE)	Wellbore	BADDING 26N-26HZ PWB
Facility	SEC.26-T2N-R66W		

## REPORT SETUP INFORMATION

Projection System	NAD83 / Lambert Colorado SP, Northern Zone (501), US feet	Software System	WellArchitect® 4.0.0
North Reference	True	User	Wilsjef02
Scale	0.99996	Report Generated	8/12/2013 at 12:07:46
Convergence at slot	n/a	Database/Source file	WellArchitectDB/BADDING_26N-26HZ_PWB.xml

## WELLPATH LOCATION

	Local coordinates		Grid coordinates		Geographic coordinates	
	North[ft]	East[ft]	Easting[US ft]	Northing[US ft]	Latitude	Longitude
Slot Location	0.30	78.09	3213402.02	1281286.65	40°06'10.814"N	104°44'13.582"W
Facility Reference Pt			3213323.93	1281285.67	40°06'10.811"N	104°44'14.587"W
Field Reference Pt			3197771.84	1268891.29	40°04'09.600"N	104°47'36.000"W

## WELLPATH DATUM

Calculation method	Minimum curvature	Rig on SLOT#04 BADDING 26N-26HZ (350'FSL & 626'FEL, SEC.26) (RKB) to Facility Vertical Datum	5132.00ft
Horizontal Reference Pt	Slot	Rig on SLOT#04 BADDING 26N-26HZ (350'FSL & 626'FEL, SEC.26) (RKB) to Mean Sea Level	5132.00ft
Vertical Reference Pt	Rig on SLOT#04 BADDING 26N-26HZ (350'FSL & 626'FEL, SEC.26) (RKB)	Rig on SLOT#04 BADDING 26N-26HZ (350'FSL & 626'FEL, SEC.26) (RKB) to Mud Line at Slot (SLOT#04 BADDING 26N-26HZ (350'FSL & 626'FEL, SEC.26))	5132.00ft
MD Reference Pt	Rig on SLOT#04 BADDING 26N-26HZ (350'FSL & 626'FEL, SEC.26) (RKB)	Section Origin	N 0.00, E 0.00 ft
Field Vertical Reference	Mean Sea Level	Section Azimuth	359.65°



# Planned Wellpath Report

BADDING 26N-26HZ (PERMIT REV-1) PWP

Page 2 of 6



## REFERENCE WELLPATH IDENTIFICATION

Operator	KERR-MCGEE OIL & GAS ONSHORE LP	Slot	SLOT#04 BADDING 26N-26HZ (350'FSL & 626'FEL, SEC.26)
Area	COLORADO	Well	BADDING 26N-26HZ
Field	WELD COUNTY (KERR MCGEE)	Wellbore	BADDING 26N-26HZ PWB
Facility	SEC.26-T2N-R66W		

## WELLPATH DATA (143 stations) † = interpolated/extrapolated station

MD [ft]	Inclination [°]	Azimuth [°]	TVD [ft]	Vert Sect [ft]	North [ft]	East [ft]	Latitude	Longitude	DLS [°/100ft]	Comments
0.00†	0.000	131.840	0.00	0.00	0.00	0.00	40°06'10.814"N	104°44'13.582"W	0.00	
17.00	0.000	131.840	17.00	0.00	0.00	0.00	40°06'10.814"N	104°44'13.582"W	0.00	TIE-ON
117.00†	0.000	131.840	117.00	0.00	0.00	0.00	40°06'10.814"N	104°44'13.582"W	0.00	
217.00†	0.000	131.840	217.00	0.00	0.00	0.00	40°06'10.814"N	104°44'13.582"W	0.00	
317.00†	0.000	131.840	317.00	0.00	0.00	0.00	40°06'10.814"N	104°44'13.582"W	0.00	
417.00†	0.000	131.840	417.00	0.00	0.00	0.00	40°06'10.814"N	104°44'13.582"W	0.00	
517.00†	0.000	131.840	517.00	0.00	0.00	0.00	40°06'10.814"N	104°44'13.582"W	0.00	
617.00†	0.000	131.840	617.00	0.00	0.00	0.00	40°06'10.814"N	104°44'13.582"W	0.00	
717.00†	0.000	131.840	717.00	0.00	0.00	0.00	40°06'10.814"N	104°44'13.582"W	0.00	
817.00†	0.000	131.840	817.00	0.00	0.00	0.00	40°06'10.814"N	104°44'13.582"W	0.00	
917.00†	0.000	131.840	917.00	0.00	0.00	0.00	40°06'10.814"N	104°44'13.582"W	0.00	
1017.00†	0.000	131.840	1017.00	0.00	0.00	0.00	40°06'10.814"N	104°44'13.582"W	0.00	
1117.00†	0.000	131.840	1117.00	0.00	0.00	0.00	40°06'10.814"N	104°44'13.582"W	0.00	
1217.00†	0.000	131.840	1217.00	0.00	0.00	0.00	40°06'10.814"N	104°44'13.582"W	0.00	
1254.00†	0.000	131.840	1254.00	0.00	0.00	0.00	40°06'10.814"N	104°44'13.582"W	0.00	FOX HILLS BASE
1317.00†	0.000	131.840	1317.00	0.00	0.00	0.00	40°06'10.814"N	104°44'13.582"W	0.00	
1417.00†	0.000	131.840	1417.00	0.00	0.00	0.00	40°06'10.814"N	104°44'13.582"W	0.00	
1450.00	0.000	131.840	1450.00	0.00	0.00	0.00	40°06'10.814"N	104°44'13.582"W	0.00	BEGIN NUDGE
1517.00†	1.340	131.840	1516.99	-0.53	-0.52	0.58	40°06'10.809"N	104°44'13.574"W	2.00	
1617.00†	3.340	131.840	1616.91	-3.27	-3.25	3.63	40°06'10.782"N	104°44'13.535"W	2.00	
1717.00†	5.340	131.840	1716.61	-8.35	-8.29	9.26	40°06'10.732"N	104°44'13.463"W	2.00	
1817.00†	7.340	131.840	1816.00	-15.77	-15.66	17.49	40°06'10.659"N	104°44'13.357"W	2.00	
1917.00†	9.340	131.840	1914.93	-25.51	-25.33	28.30	40°06'10.564"N	104°44'13.218"W	2.00	
1950.00	10.000	131.840	1947.47	-29.23	-29.03	32.42	40°06'10.527"N	104°44'13.165"W	2.00	END NUDGE
2017.00†	10.000	131.840	2013.45	-37.04	-36.79	41.09	40°06'10.450"N	104°44'13.053"W	0.00	
2117.00†	10.000	131.840	2111.93	-48.70	-48.38	54.03	40°06'10.336"N	104°44'12.887"W	0.00	
2217.00†	10.000	131.840	2210.41	-60.37	-59.96	66.97	40°06'10.221"N	104°44'12.720"W	0.00	
2317.00†	10.000	131.840	2308.89	-72.03	-71.54	79.90	40°06'10.107"N	104°44'12.554"W	0.00	
2417.00†	10.000	131.840	2407.37	-83.69	-83.13	92.84	40°06'09.993"N	104°44'12.387"W	0.00	
2517.00†	10.000	131.840	2505.85	-95.35	-94.71	105.78	40°06'09.878"N	104°44'12.221"W	0.00	
2617.00†	10.000	131.840	2604.33	-107.01	-106.29	118.71	40°06'09.764"N	104°44'12.054"W	0.00	
2717.00†	10.000	131.840	2702.81	-118.68	-117.88	131.65	40°06'09.649"N	104°44'11.888"W	0.00	
2817.00†	10.000	131.840	2801.29	-130.34	-129.46	144.59	40°06'09.535"N	104°44'11.721"W	0.00	
2917.00†	10.000	131.840	2899.77	-142.00	-141.04	157.53	40°06'09.420"N	104°44'11.555"W	0.00	
3017.00†	10.000	131.840	2998.26	-153.66	-152.63	170.46	40°06'09.306"N	104°44'11.388"W	0.00	
3117.00†	10.000	131.840	3096.74	-165.32	-164.21	183.40	40°06'09.191"N	104°44'11.222"W	0.00	
3217.00†	10.000	131.840	3195.22	-176.98	-175.79	196.34	40°06'09.077"N	104°44'11.055"W	0.00	
3317.00†	10.000	131.840	3293.70	-188.65	-187.37	209.27	40°06'08.962"N	104°44'10.889"W	0.00	
3417.00†	10.000	131.840	3392.18	-200.31	-198.96	222.21	40°06'08.848"N	104°44'10.722"W	0.00	
3517.00†	10.000	131.840	3490.66	-211.97	-210.54	235.15	40°06'08.733"N	104°44'10.556"W	0.00	
3617.00†	10.000	131.840	3589.14	-223.63	-222.12	248.08	40°06'08.619"N	104°44'10.389"W	0.00	
3717.00†	10.000	131.840	3687.62	-235.29	-233.71	261.02	40°06'08.504"N	104°44'10.223"W	0.00	
3817.00†	10.000	131.840	3786.10	-246.96	-245.29	273.96	40°06'08.390"N	104°44'10.056"W	0.00	
3917.00†	10.000	131.840	3884.58	-258.62	-256.87	286.90	40°06'08.276"N	104°44'09.890"W	0.00	
4017.00†	10.000	131.840	3983.06	-270.28	-268.46	299.83	40°06'08.161"N	104°44'09.724"W	0.00	



# Planned Wellpath Report

BADDING 26N-26HZ (PERMIT REV-1) PWP

Page 3 of 6



## REFERENCE WELLPATH IDENTIFICATION

Operator	KERR-MCGEE OIL & GAS ONSHORE LP	Slot	SLOT#04 BADDING 26N-26HZ (350'FSL & 626'FEL, SEC.26)
Area	COLORADO	Well	BADDING 26N-26HZ
Field	WELD COUNTY (KERR MCGEE)	Wellbore	BADDING 26N-26HZ PWB
Facility	SEC.26-T2N-R66W		

## WELLPATH DATA (143 stations) † = interpolated/extrapolated station

MD [ft]	Inclination [°]	Azimuth [°]	TVD [ft]	Vert Sect [ft]	North [ft]	East [ft]	Latitude	Longitude	DLS [°/100ft]	Comments
4117.00†	10.000	131.840	4081.54	-281.94	-280.04	312.77	40°06'08.047"N	104°44'09.557"W	0.00	
4217.00†	10.000	131.840	4180.02	-293.60	-291.62	325.71	40°06'07.932"N	104°44'09.391"W	0.00	
4269.78†	10.000	131.840	4232.00	-299.76	-297.74	332.53	40°06'07.872"N	104°44'09.303"W	0.00	PARKMAN
4317.00†	10.000	131.840	4278.51	-305.26	-303.21	338.64	40°06'07.818"N	104°44'09.224"W	0.00	
4417.00†	10.000	131.840	4376.99	-316.93	-314.79	351.58	40°06'07.703"N	104°44'09.058"W	0.00	
4517.00†	10.000	131.840	4475.47	-328.59	-326.37	364.52	40°06'07.589"N	104°44'08.891"W	0.00	
4617.00†	10.000	131.840	4573.95	-340.25	-337.96	377.45	40°06'07.474"N	104°44'08.725"W	0.00	
4662.75†	10.000	131.840	4619.00	-345.58	-343.26	383.37	40°06'07.422"N	104°44'08.648"W	0.00	SUSSEX
4717.00†	10.000	131.840	4672.43	-351.91	-349.54	390.39	40°06'07.360"N	104°44'08.558"W	0.00	
4817.00†	10.000	131.840	4770.91	-363.57	-361.12	403.33	40°06'07.245"N	104°44'08.392"W	0.00	
4917.00†	10.000	131.840	4869.39	-375.24	-372.71	416.26	40°06'07.131"N	104°44'08.225"W	0.00	
5017.00†	10.000	131.840	4967.87	-386.90	-384.29	429.20	40°06'07.016"N	104°44'08.059"W	0.00	
5117.00†	10.000	131.840	5066.35	-398.56	-395.87	442.14	40°06'06.902"N	104°44'07.892"W	0.00	
5217.00†	10.000	131.840	5164.83	-410.22	-407.46	455.08	40°06'06.787"N	104°44'07.726"W	0.00	
5317.00†	10.000	131.840	5263.31	-421.88	-419.04	468.01	40°06'06.673"N	104°44'07.559"W	0.00	
5345.11	10.000	131.840	5291.00	-425.16	-422.30	471.65	40°06'06.641"N	104°44'07.512"W	0.00	BEGIN DROP
5417.00†	8.562	131.840	5361.94	-432.95	-430.03	480.29	40°06'06.564"N	104°44'07.401"W	2.00	
5517.00†	6.562	131.840	5461.07	-441.79	-438.81	490.09	40°06'06.478"N	104°44'07.275"W	2.00	
5617.00†	4.562	131.840	5560.59	-448.29	-445.27	497.31	40°06'06.414"N	104°44'07.182"W	2.00	
5717.00†	2.562	131.840	5660.39	-452.47	-449.42	501.94	40°06'06.373"N	104°44'07.123"W	2.00	
5817.00†	0.562	131.840	5760.35	-454.30	-451.24	503.97	40°06'06.355"N	104°44'07.097"W	2.00	
5845.11	0.000	359.651	5788.47	-454.39	-451.33	504.07	40°06'06.354"N	104°44'07.095"W	2.00	END DROP
5917.00†	0.000	359.651	5860.35	-454.39	-451.33	504.07	40°06'06.354"N	104°44'07.095"W	0.00	
6017.00†	0.000	359.651	5960.35	-454.39	-451.33	504.07	40°06'06.354"N	104°44'07.095"W	0.00	
6117.00†	0.000	359.651	6060.35	-454.39	-451.33	504.07	40°06'06.354"N	104°44'07.095"W	0.00	
6217.00†	0.000	359.651	6160.35	-454.39	-451.33	504.07	40°06'06.354"N	104°44'07.095"W	0.00	
6317.00†	0.000	359.651	6260.35	-454.39	-451.33	504.07	40°06'06.354"N	104°44'07.095"W	0.00	
6417.00†	0.000	359.651	6360.35	-454.39	-451.33	504.07	40°06'06.354"N	104°44'07.095"W	0.00	
6517.00†	0.000	359.651	6460.35	-454.39	-451.33	504.07	40°06'06.354"N	104°44'07.095"W	0.00	
6617.00†	0.000	359.651	6560.35	-454.39	-451.33	504.07	40°06'06.354"N	104°44'07.095"W	0.00	
6717.00†	0.000	359.651	6660.35	-454.39	-451.33	504.07	40°06'06.354"N	104°44'07.095"W	0.00	
6745.69†	0.000	359.651	6689.04	-454.39	-451.33	504.07	40°06'06.354"N	104°44'07.095"W	0.00	4 1/2" LINER TOP
6817.00†	0.000	359.651	6760.35	-454.39	-451.33	504.07	40°06'06.354"N	104°44'07.095"W	0.00	
6845.69	0.000	359.651	6789.05	-454.39	-451.33	504.07	40°06'06.354"N	104°44'07.095"W	0.00	KOP, BUILD @ 10°/100'
6917.00†	7.131	359.651	6860.17	-449.96	-446.90	504.05	40°06'06.398"N	104°44'07.096"W	10.00	
7017.00†	17.131	359.651	6957.81	-428.97	-425.91	503.92	40°06'06.605"N	104°44'07.097"W	10.00	
7117.00†	27.131	359.651	7050.33	-391.35	-388.29	503.69	40°06'06.977"N	104°44'07.100"W	10.00	
7217.00†	37.131	359.651	7134.90	-338.23	-335.17	503.37	40°06'07.502"N	104°44'07.104"W	10.00	
7317.00†	47.131	359.651	7208.97	-271.23	-268.17	502.96	40°06'08.164"N	104°44'07.109"W	10.00	
7341.12†	49.542	359.651	7225.00	-253.22	-250.16	502.85	40°06'08.342"N	104°44'07.111"W	10.00	SHARON SPRINGS
7417.00†	57.131	359.651	7270.28	-192.39	-189.33	502.48	40°06'08.943"N	104°44'07.116"W	10.00	
7439.27†	59.358	359.651	7282.00	-173.45	-170.40	502.36	40°06'09.130"N	104°44'07.117"W	10.00	NIOBRARA A
7517.00†	67.131	359.651	7316.96	-104.10	-101.05	501.94	40°06'09.815"N	104°44'07.123"W	10.00	
7614.29†	76.859	359.651	7347.00	-11.69	-8.64	501.38	40°06'10.729"N	104°44'07.130"W	10.00	NIOBRARA B CHALK
7617.00†	77.131	359.651	7347.61	-9.05	-5.99	501.36	40°06'10.755"N	104°44'07.130"W	10.00	



# Planned Wellpath Report

BADDING 26N-26HZ (PERMIT REV-1) PWP

Page 4 of 6



## REFERENCE WELLPATH IDENTIFICATION

Operator	KERR-MCGEE OIL & GAS ONSHORE LP	Slot	SLOT#04 BADDING 26N-26HZ (350'FSL & 626'FEL, SEC.26)
Area	COLORADO	Well	BADDING 26N-26HZ
Field	WELD COUNTY (KERR MCGEE)	Wellbore	BADDING 26N-26HZ PWB
Facility	SEC.26-T2N-R66W		

## WELLPATH DATA (143 stations) † = interpolated/extrapolated station

MD [ft]	Inclination [°]	Azimuth [°]	TVD [ft]	Vert Sect [ft]	North [ft]	East [ft]	Latitude	Longitude	DLS [°/100ft]	Comments
7717.00†	87.131	359.651	7361.28	89.89	92.94	500.76	40°06'11.732"N	104°44'07.138"W	10.00	
7746.15	90.046	359.651	7362.00	119.03	122.08	500.58	40°06'12.020"N	104°44'07.140"W	10.00	LANDING POINT
7817.00†	90.046	359.651	7361.95	189.87	192.92	500.15	40°06'12.720"N	104°44'07.145"W	0.00	
7917.00†	90.046	359.651	7361.87	289.87	292.92	499.54	40°06'13.709"N	104°44'07.153"W	0.00	
8017.00†	90.046	359.651	7361.79	389.87	392.92	498.94	40°06'14.697"N	104°44'07.161"W	0.00	
8117.00†	90.046	359.651	7361.71	489.87	492.92	498.33	40°06'15.685"N	104°44'07.169"W	0.00	
8217.00†	90.046	359.651	7361.63	589.87	592.92	497.72	40°06'16.673"N	104°44'07.177"W	0.00	
8317.00†	90.046	359.651	7361.55	689.87	692.91	497.11	40°06'17.661"N	104°44'07.185"W	0.00	
8417.00†	90.046	359.651	7361.47	789.87	792.91	496.50	40°06'18.650"N	104°44'07.192"W	0.00	
8517.00†	90.046	359.651	7361.39	889.87	892.91	495.89	40°06'19.638"N	104°44'07.200"W	0.00	
8617.00†	90.046	359.651	7361.31	989.87	992.91	495.28	40°06'20.626"N	104°44'07.208"W	0.00	
8717.00†	90.046	359.651	7361.22	1089.87	1092.91	494.67	40°06'21.614"N	104°44'07.216"W	0.00	
8817.00†	90.046	359.651	7361.14	1189.87	1192.90	494.07	40°06'22.602"N	104°44'07.224"W	0.00	
8917.00†	90.046	359.651	7361.06	1289.87	1292.90	493.46	40°06'23.591"N	104°44'07.231"W	0.00	
9017.00†	90.046	359.651	7360.98	1389.87	1392.90	492.85	40°06'24.579"N	104°44'07.239"W	0.00	
9117.00†	90.046	359.651	7360.90	1489.87	1492.90	492.24	40°06'25.567"N	104°44'07.247"W	0.00	
9217.00†	90.046	359.651	7360.82	1589.87	1592.90	491.63	40°06'26.555"N	104°44'07.255"W	0.00	
9317.00†	90.046	359.651	7360.74	1689.87	1692.90	491.02	40°06'27.543"N	104°44'07.263"W	0.00	
9417.00†	90.046	359.651	7360.66	1789.87	1792.89	490.41	40°06'28.532"N	104°44'07.270"W	0.00	
9517.00†	90.046	359.651	7360.58	1889.87	1892.89	489.80	40°06'29.520"N	104°44'07.278"W	0.00	
9617.00†	90.046	359.651	7360.50	1989.87	1992.89	489.20	40°06'30.508"N	104°44'07.286"W	0.00	
9717.00†	90.046	359.651	7360.42	2089.87	2092.89	488.59	40°06'31.496"N	104°44'07.294"W	0.00	
9817.00†	90.046	359.651	7360.34	2189.87	2192.89	487.98	40°06'32.484"N	104°44'07.302"W	0.00	
9917.00†	90.046	359.651	7360.26	2289.87	2292.88	487.37	40°06'33.473"N	104°44'07.309"W	0.00	
10017.00†	90.046	359.651	7360.18	2389.87	2392.88	486.76	40°06'34.461"N	104°44'07.317"W	0.00	
10117.00†	90.046	359.651	7360.10	2489.87	2492.88	486.15	40°06'35.449"N	104°44'07.325"W	0.00	
10217.00†	90.046	359.651	7360.02	2589.87	2592.88	485.54	40°06'36.437"N	104°44'07.333"W	0.00	
10317.00†	90.046	359.651	7359.94	2689.87	2692.88	484.93	40°06'37.425"N	104°44'07.341"W	0.00	
10417.00†	90.046	359.651	7359.86	2789.87	2792.87	484.33	40°06'38.414"N	104°44'07.349"W	0.00	
10517.00†	90.046	359.651	7359.78	2889.87	2892.87	483.72	40°06'39.402"N	104°44'07.356"W	0.00	
10617.00†	90.046	359.651	7359.70	2989.87	2992.87	483.11	40°06'40.390"N	104°44'07.364"W	0.00	
10717.00†	90.046	359.651	7359.62	3089.87	3092.87	482.50	40°06'41.378"N	104°44'07.372"W	0.00	
10817.00†	90.046	359.651	7359.54	3189.87	3192.87	481.89	40°06'42.366"N	104°44'07.380"W	0.00	
10917.00†	90.046	359.651	7359.46	3289.87	3292.87	481.28	40°06'43.355"N	104°44'07.388"W	0.00	
11017.00†	90.046	359.651	7359.38	3389.87	3392.86	480.67	40°06'44.343"N	104°44'07.395"W	0.00	
11117.00†	90.046	359.651	7359.30	3489.87	3492.86	480.06	40°06'45.331"N	104°44'07.403"W	0.00	
11217.00†	90.046	359.651	7359.22	3589.87	3592.86	479.46	40°06'46.319"N	104°44'07.411"W	0.00	
11317.00†	90.046	359.651	7359.14	3689.87	3692.86	478.85	40°06'47.307"N	104°44'07.419"W	0.00	
11417.00†	90.046	359.651	7359.06	3789.87	3792.86	478.24	40°06'48.295"N	104°44'07.427"W	0.00	
11517.00†	90.046	359.651	7358.98	3889.87	3892.85	477.63	40°06'49.284"N	104°44'07.434"W	0.00	
11617.00†	90.046	359.651	7358.90	3989.87	3992.85	477.02	40°06'50.272"N	104°44'07.442"W	0.00	
11717.00†	90.046	359.651	7358.82	4089.87	4092.85	476.41	40°06'51.260"N	104°44'07.450"W	0.00	
11817.00†	90.046	359.651	7358.74	4189.87	4192.85	475.80	40°06'52.248"N	104°44'07.458"W	0.00	
11917.00†	90.046	359.651	7358.66	4289.87	4292.85	475.19	40°06'53.236"N	104°44'07.466"W	0.00	
12017.00†	90.046	359.651	7358.58	4389.87	4392.84	474.59	40°06'54.225"N	104°44'07.473"W	0.00	





# Planned Wellpath Report

## BADDING 26N-26HZ (PERMIT REV-1) PWP

Page 5 of 6



### REFERENCE WELLPATH IDENTIFICATION

Operator	KERR-MCGEE OIL & GAS ONSHORE LP	Slot	SLOT#04 BADDING 26N-26HZ (350'FSL & 626'FEL, SEC.26)
Area	COLORADO	Well	BADDING 26N-26HZ
Field	WELD COUNTY (KERR MCGEE)	Wellbore	BADDING 26N-26HZ PWB
Facility	SEC.26-T2N-R66W		

### WELLPATH DATA (143 stations) † = interpolated/extrapolated station

MD [ft]	Inclination [°]	Azimuth [°]	TVD [ft]	Vert Sect [ft]	North [ft]	East [ft]	Latitude	Longitude	DLS [°/100ft]	Comments
12117.00†	90.046	359.651	7358.50	4489.87	4492.84	473.98	40°06'55.213"N	104°44'07.481"W	0.00	
12217.00†	90.046	359.651	7358.42	4589.87	4592.84	473.37	40°06'56.201"N	104°44'07.489"W	0.00	
12317.00†	90.046	359.651	7358.34	4689.87	4692.84	472.76	40°06'57.189"N	104°44'07.497"W	0.00	
12417.00†	90.046	359.651	7358.26	4789.87	4792.84	472.15	40°06'58.177"N	104°44'07.505"W	0.00	
12517.00†	90.046	359.651	7358.18	4889.87	4892.83	471.54	40°06'59.166"N	104°44'07.513"W	0.00	
12617.00†	90.046	359.651	7358.10	4989.87	4992.83	470.93	40°07'00.154"N	104°44'07.520"W	0.00	
12717.00†	90.046	359.651	7358.02	5089.87	5092.83	470.33	40°07'01.142"N	104°44'07.528"W	0.00	
12740.72	90.046	359.651	7358.00 <sup>1</sup>	5113.59	5116.55	470.18	40°07'01.376"N	104°44'07.530"W	0.00	TOTAL DEPTH

### HOLE & CASING SECTIONS -

Ref Wellbore: BADDING 26N-26HZ PWB

Ref Wellpath: BADDING 26N-26HZ (PERMIT REV-1) PWP

String/Diameter	Start MD [ft]	End MD [ft]	Interval [ft]	Start TVD [ft]	End TVD [ft]	Start N/S [ft]	Start E/W [ft]	End N/S [ft]	End E/W [ft]
13.5in Open Hole	17.00	1304.00	1287.00	17.00	1304.00	0.00	0.00	0.00	0.00
9.625in Casing Surface	17.00	1304.00	1287.00	17.00	1304.00	0.00	0.00	0.00	0.00
8.75in Open Hole	1304.00	7746.15	6442.15	1304.00	7362.00	0.00	0.00	122.07	500.58
7in Casing Intermediate	17.00	7746.15	7729.15	17.00	7362.00	0.00	0.00	122.07	500.58
6.125in Open Hole	7746.15	12740.72	4994.57	7362.00	7358.00	122.07	500.58	5116.55	470.18
4.5in Casing Production	17.00	12740.72	12723.72	17.00	7358.00	0.00	0.00	5116.55	470.18

### TARGETS

Name	MD [ft]	TVD [ft]	North [ft]	East [ft]	Grid East [US ft]	Grid North [US ft]	Latitude	Longitude	Shape
BADDING SECTION 26 LINES		0.00	-0.30	-78.02	3213324.01	1281285.67	40°06'10.811"N	104°44'14.586"W	polygon
SECTION 23 LINES		17.00	9904.14	-277.61	3213039.23	1291187.62	40°07'48.688"N	104°44'17.156"W	polygon
1) BADDING 26N-26HZ BHL ON PLAT REV-1 (200'FSL & 125'FEL, SEC.23)	12740.72	7358.00	5116.55	470.18	3213828.15	1286406.84	40°07'01.376"N	104°44'07.530"W	point
BADDING 26N-26HZ LAND BOX		7400.00	0.00	0.00	3213402.02	1281286.65	40°06'10.814"N	104°44'13.582"W	polygon

### SURVEY PROGRAM - Ref Wellbore: BADDING 26N-26HZ PWB Ref Wellpath: BADDING 26N-26HZ (PERMIT REV-1) PWP

Start MD [ft]	End MD [ft]	Positional Uncertainty Model	Log Name/Comment	Wellbore
17.00	7746.15	NaviTrak (Standard)		BADDING 26N-26HZ PWB
7746.15	12740.72	OnTrak (Standard)		BADDING 26N-26HZ PWB



# Planned Wellpath Report

BADDING 26N-26HZ (PERMIT REV-1) PWP

Page 6 of 6



## REFERENCE WELLPATH IDENTIFICATION

Operator	KERR-MCGEE OIL & GAS ONSHORE LP	Slot	SLOT#04 BADDING 26N-26HZ (350'FSL & 626'FEL, SEC.26)
Area	COLORADO	Well	BADDING 26N-26HZ
Field	WELD COUNTY (KERR MCGEE)	Wellbore	BADDING 26N-26HZ PWB
Facility	SEC.26-T2N-R66W		

## WELLPATH COMMENTS

MD [ft]	Inclination [°]	Azimuth [°]	TVD [ft]	Comment
1254.00	0.000	131.840	1254.00	FOX HILLS BASE
4269.78	10.000	131.840	4232.00	PARKMAN
4662.75	10.000	131.840	4619.00	SUSSEX
6745.69	0.000	359.651	6689.04	4 1/2" LINER TOP
7341.12	49.542	359.651	7225.00	SHARON SPRINGS
7439.27	59.358	359.651	7282.00	NIOBRARA A
7614.29	76.859	359.651	7347.00	NIOBRARA B CHALK