

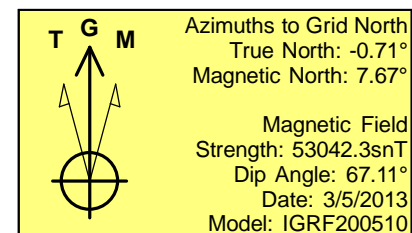
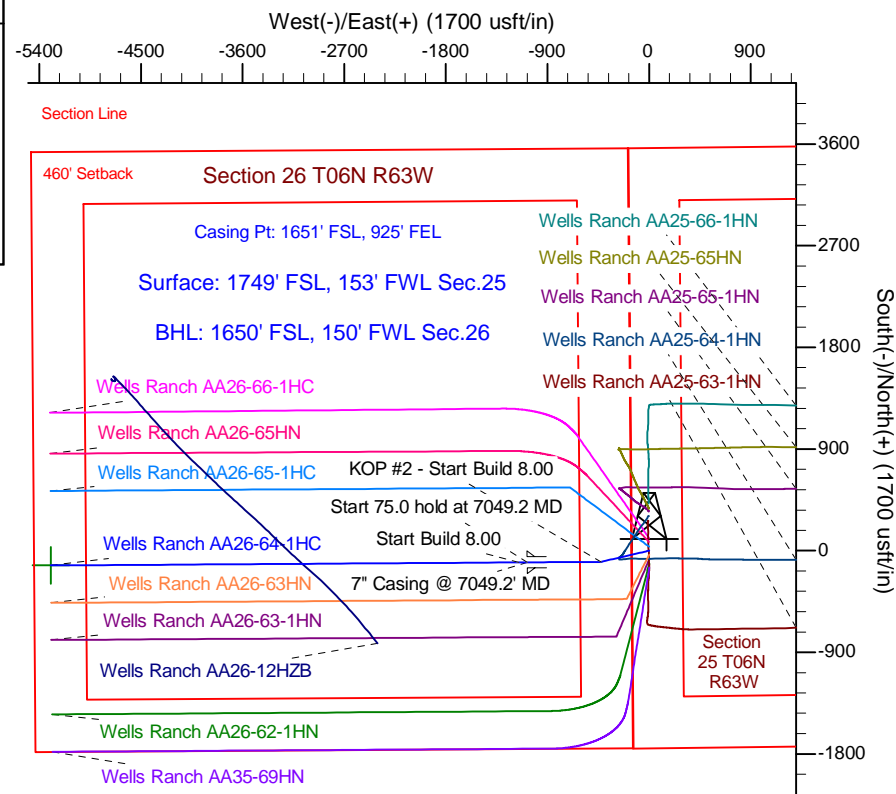
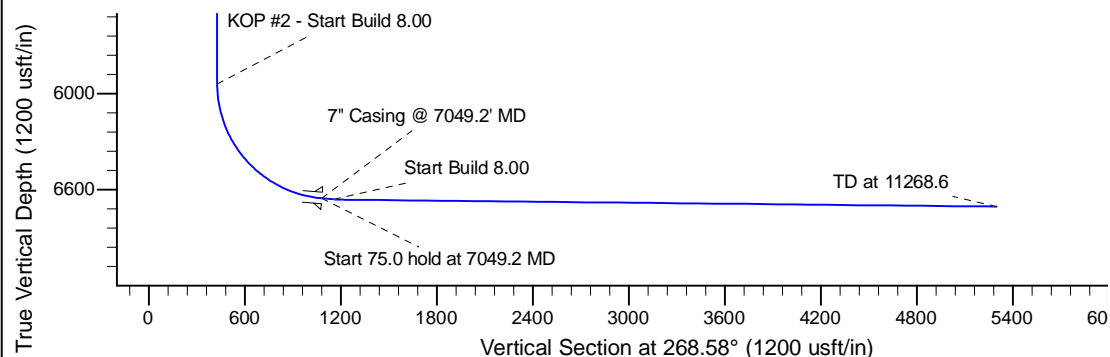
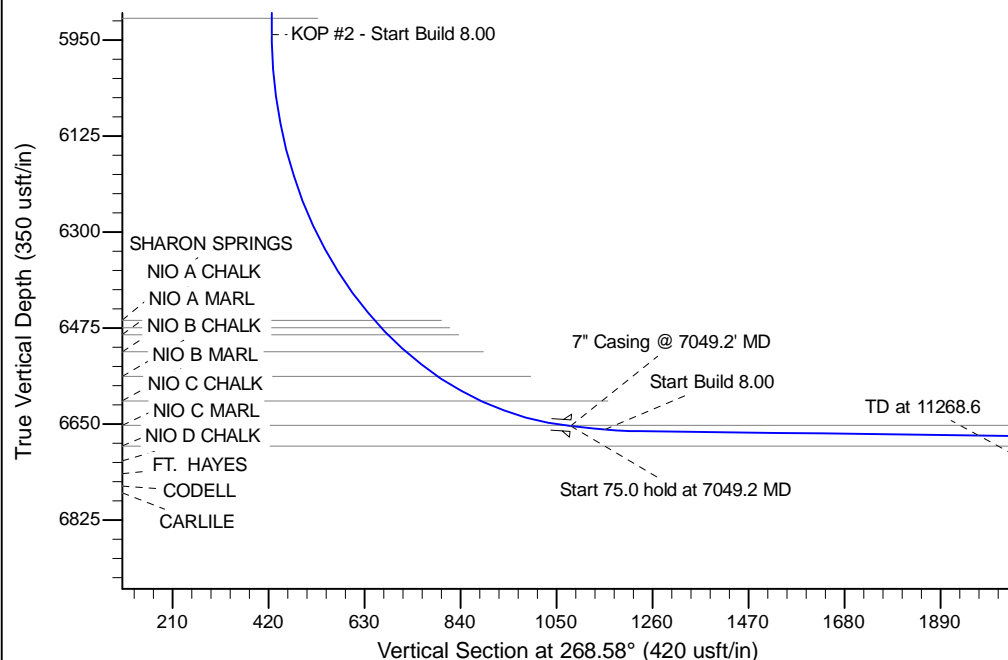
Project: Wattenberg Field
Site: AA (Sec.25-T06N-R63W) Weld County, CO
Well: Wells Ranch AA26-64-1HC
Wellbore: Original Drilling
Design: APD - Rev 1

Northern Region Drilling - Working

Geodetic System: US State Plane 1983
Datum: North American Datum 1983
Ellipsoid: GRS 1980
Zone: Colorado Northern Zone
System Datum: Mean Sea Level

SECTION DETAILS

Sec	MD	Inc	Azi	TVD	+N/-S	+E/-W	Dleg	TFace	VSec	Target
1	0.0	0.00	0.00	0.0	0.0	0.0	0.00	0.00	0.0	
2	1200.0	0.00	0.00	1200.0	0.0	0.0	0.00	0.00	0.0	
3	1902.4	14.05	256.89	1895.3	-19.4	-83.4	2.00	256.89	83.9	
4	2994.3	14.05	256.89	2954.7	-79.6	-341.6	0.00	0.00	343.4	
5	3696.7	0.00	0.00	3650.0	-99.0	-425.0	2.00	180.00	427.3	
6	5986.7	0.00	0.00	5940.0	-99.0	-425.0	0.00	0.00	427.3	
7	7049.2	85.00	269.62	6653.5	-103.3	-1078.8	8.00	269.62	1081.0	
8	7124.2	85.00	269.62	6660.0	-103.8	-1153.5	0.00	0.00	1155.7	
9	7179.2	89.40	269.62	6662.7	-104.2	-1208.4	8.00	0.00	1210.6	
10	11268.6	89.40	269.62	6705.5	-131.1	-5297.5	0.00	0.00	5299.1	Wells Ranch AA26-64-1HC BHL 1650'FSL, 150'FWL



WELL DETAILS: Wells Ranch AA26-64-1HC				
Ground Level: 4790.0				
0.0	0.0	Northing 1410497.67	Easting 3307746.97	Latitude 40.454950
				Longitude -104.394100
Plan: APD - Rev 1 (Wells Ranch AA26-64-1HC/Original Drilling)				
Created By: Shailey Jewell			Date: 11:40, September 06 2013	
Checked: _____			Date: _____	
Reviewed: _____			Date: _____	
Approved: _____			Date: _____	