

# KERR-MCGEE OIL & GAS ONSHORE LP

Location: COLORADO Slot: SLOT#03 BADDING 16C-35HZ (350'FSL & 652'FEL, SEC.26)  
Field: WELD COUNTY (KERR MCGEE) Well: BADDING 16C-35HZ  
Facility: SEC.26-T2N-R66W Wellbore: BADDING 16C-35HZ PWB

Plot reference wellpath is BADDING 16C-35HZ (PERMIT REV-2) PWP

True vertical depths are referenced to Rig on SLOT#03 BADDING 16C-35HZ (350'FSL & 652'FEL, SEC.26) (RKB)	Grid System: NAD83 / Lambert Colorado SP, Northern Zone (501), US feet
Measured depths are referenced to Rig on SLOT#03 BADDING 16C-35HZ (350'FSL & 652'FEL, SEC.26) (RKB)	North Reference: True north
Rig on SLOT#03 BADDING 16C-35HZ (350'FSL & 652'FEL, SEC.26) (RKB) to Mean Sea Level: 5132 feet	Scale: True distance
Mean Sea Level to Mud line (At Slot: SLOT#03 BADDING 16C-35HZ (350'FSL & 652'FEL, SEC.26)): 0 feet	Depths are in feet
Coordinates are in feet referenced to Slot	Created by: wlsjef02 on 8/22/2013

## Location Information

Facility Name			Grid East (US ft)	Grid North (US ft)	Latitude	Longitude
SEC.26-T2N-R66W			3213323.933	1281285.671	40°06'10.811"N	104°44'14.587"W
Slot	Local N (ft)	Local E (ft)	Grid East (US ft)	Grid North (US ft)	Latitude	Longitude
SLOT#03 BADDING 16C-35HZ (350'FSL & 652'FEL, SEC.26)	0.30	52.14	3213376.067	1281286.423	40°06'10.814"N	104°44'13.916"W
Rig on SLOT#03 BADDING 16C-35HZ (350'FSL & 652'FEL, SEC.26) (RKB) to Mud line (At Slot: SLOT#03 BADDING 16C-35HZ (350'FSL & 652'FEL, SEC.26))					5132ft	
Mean Sea Level to Mud line (At Slot: SLOT#03 BADDING 16C-35HZ (350'FSL & 652'FEL, SEC.26))					0ft	
Rig on SLOT#03 BADDING 16C-35HZ (350'FSL & 652'FEL, SEC.26) (RKB) to Mean Sea Level					5132ft	

## Survey Program

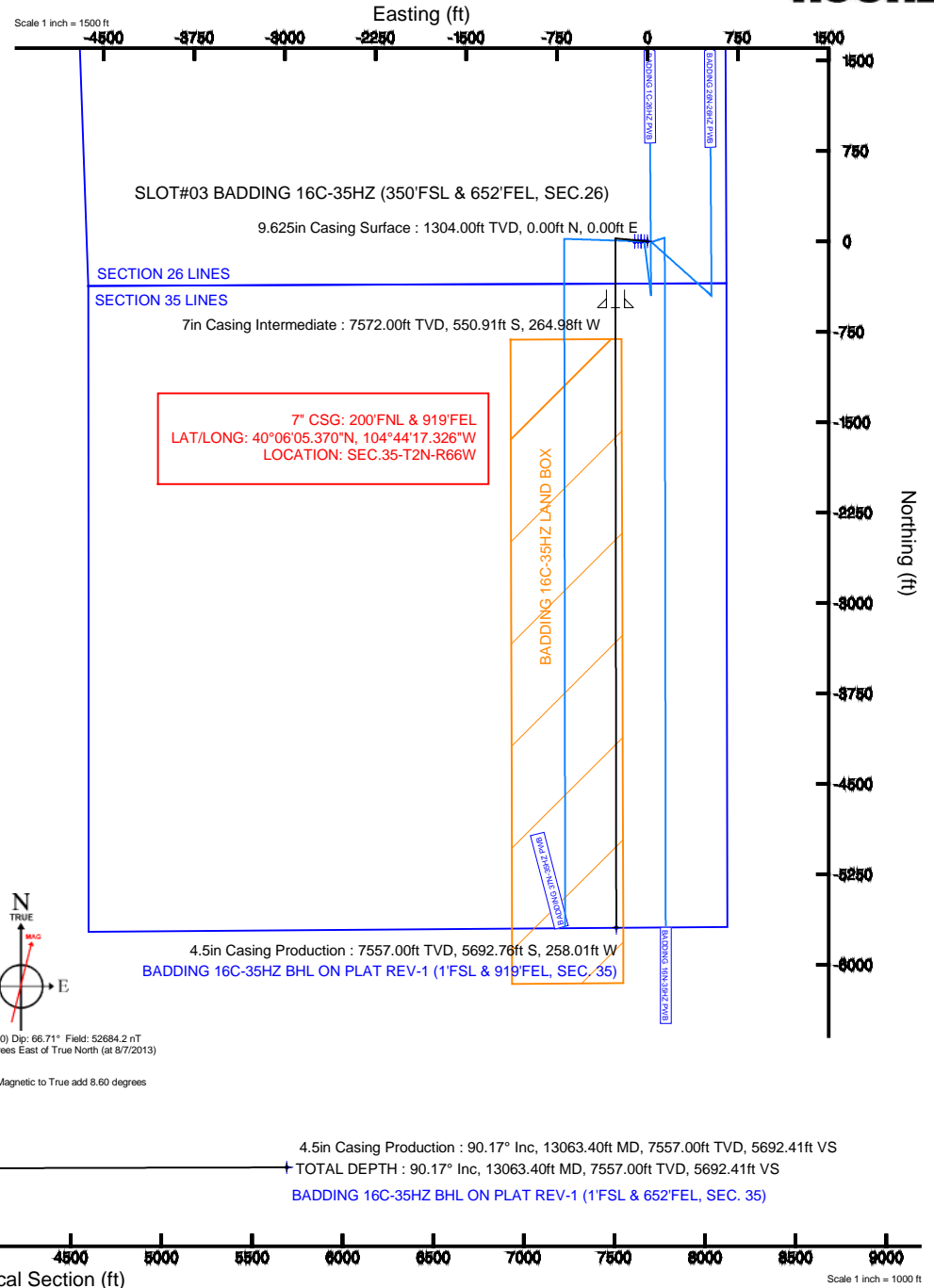
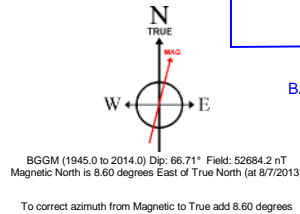
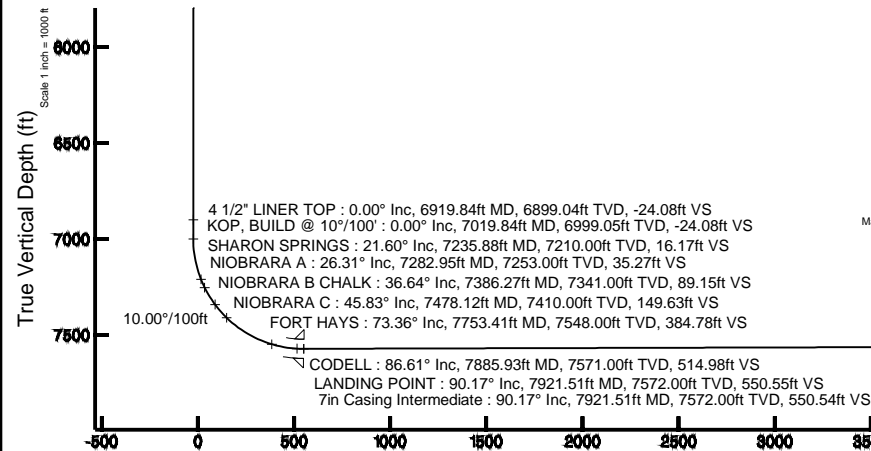
Start MD (ft)	End MD (ft)	Tool	Model	Log Name/Comment	Wellbore
17.00	7921.51	NaviTrak	NaviTrak (Standard)		BADDING 16C-35HZ PWB
7921.51	13063.40	OnTrak	OnTrak (Standard)		BADDING 16C-35HZ PWB

## Well Profile Data

Design Comment	MD (ft)	Inc (°)	Az (°)	TVD (ft)	Local N (ft)	Local E (ft)	DLS (°/100ft)	VS (ft)
TIE-ON	17.00	0.000	275.100	17.00	0.00	0.00	0.00	0.00
BEGIN NUDGE	1450.00	0.000	275.100	1450.00	0.00	0.00	0.00	0.00
END NUDGE	1950.00	10.000	275.100	1947.47	3.87	-43.35	2.00	-3.93
BEGIN DROP	2985.26	10.000	275.100	2967.00	19.85	-222.41	0.00	-20.15
END DROP	3485.26	0.000	179.922	3464.47	23.72	-265.76	2.00	-24.08
KOP, BUILD @ 10°/100'	7019.84	0.000	179.922	6999.05	23.72	-265.76	0.00	-24.08
LANDING POINT	7921.51	90.167	179.922	7572.00	-550.91	-264.98	10.00	550.55
TOTAL DEPTH	13063.40	90.167	179.922	7557.00	-5692.76	-258.01	0.00	5692.41

## Targets

Name	MD (ft)	TVD (ft)	Local N (ft)	Local E (ft)	Grid East (US ft)	Grid North (US ft)	Latitude	Longitude
BADDING SECTION 26 LINES		0.00	-0.30	-52.06	3213324.01	1281285.67	40°06'10.811"N	104°44'14.586"W
BADDING SECTION 35 LINES		0.00	-0.30	-52.06	3213324.01	1281285.67	40°06'10.811"N	104°44'14.586"W
BADDING 16C-35HZ BHL ON PLAT REV-1 (1'FSL & 919'FEL, SEC. 35)	13063.40	7557.00	-5692.76	-258.01	3213167.04	1270591.89	40°05'14.557"N	104°44'17.236"W
BADDING 16C-35HZ LAND BOX		7600.00	0.00	0.00	3213376.07	1281286.42	40°06'10.814"N	104°44'13.916"W





# Planned Wellpath Report

BADDING 16C-35HZ (PERMIT REV-2) PWP

Page 1 of 7



## REFERENCE WELLPATH IDENTIFICATION

Operator	KERR-MCGEE OIL & GAS ONSHORE LP	Slot	SLOT#03 BADDING 16C-35HZ (350'FSL & 652'FEL, SEC.26)
Area	COLORADO	Well	BADDING 16C-35HZ
Field	WELD COUNTY (KERR MCGEE)	Wellbore	BADDING 16C-35HZ PWB
Facility	SEC.26-T2N-R66W		

## REPORT SETUP INFORMATION

Projection System	NAD83 / Lambert Colorado SP, Northern Zone (501), US feet	Software System	WellArchitect® 4.0.0
North Reference	True	User	Wilsjef02
Scale	0.99996	Report Generated	8/22/2013 at 13:39:37
Convergence at slot	n/a	Database/Source file	WellArchitectDB/BADDING_16C-35HZ_PWB.xml

## WELLPATH LOCATION

	Local coordinates		Grid coordinates		Geographic coordinates	
	North[ft]	East[ft]	Easting[US ft]	Northing[US ft]	Latitude	Longitude
Slot Location	0.30	52.14	3213376.07	1281286.42	40°06'10.814"N	104°44'13.916"W
Facility Reference Pt			3213323.93	1281285.67	40°06'10.811"N	104°44'14.587"W
Field Reference Pt			3197771.84	1268891.29	40°04'09.600"N	104°47'36.000"W

## WELLPATH DATUM

Calculation method	Minimum curvature	Rig on SLOT#03 BADDING 16C-35HZ (350'FSL & 652'FEL, SEC.26) (RKB) to Facility Vertical Datum	5132.00ft
Horizontal Reference Pt	Slot	Rig on SLOT#03 BADDING 16C-35HZ (350'FSL & 652'FEL, SEC.26) (RKB) to Mean Sea Level	5132.00ft
Vertical Reference Pt	Rig on SLOT#03 BADDING 16C-35HZ (350'FSL & 652'FEL, SEC.26) (RKB)	Rig on SLOT#03 BADDING 16C-35HZ (350'FSL & 652'FEL, SEC.26) (RKB) to Mud Line at Slot (SLOT#03 BADDING 16C-35HZ (350'FSL & 652'FEL, SEC.26))	5132.00ft
MD Reference Pt	Rig on SLOT#03 BADDING 16C-35HZ (350'FSL & 652'FEL, SEC.26) (RKB)	Section Origin	N 0.00, E 0.00 ft
Field Vertical Reference	Mean Sea Level	Section Azimuth	179.92°



# Planned Wellpath Report

## BADDING 16C-35HZ (PERMIT REV-2) PWP

Page 2 of 7



### REFERENCE WELLPATH IDENTIFICATION

Operator	KERR-MCGEE OIL & GAS ONSHORE LP	Slot	SLOT#03 BADDING 16C-35HZ (350'FSL & 652'FEL, SEC.26)
Area	COLORADO	Well	BADDING 16C-35HZ
Field	WELD COUNTY (KERR MCGEE)	Wellbore	BADDING 16C-35HZ PWB
Facility	SEC.26-T2N-R66W		

### WELLPATH DATA (149 stations) † = interpolated/extrapolated station

MD [ft]	Inclination [°]	Azimuth [°]	TVD [ft]	Vert Sect [ft]	North [ft]	East [ft]	Latitude	Longitude	DLS [°/100ft]	Comments
0.00†	0.000	275.100	0.00	0.00	0.00	0.00	40°06'10.814"N	104°44'13.916"W	0.00	
17.00	0.000	275.100	17.00	0.00	0.00	0.00	40°06'10.814"N	104°44'13.916"W	0.00	TIE-ON
117.00†	0.000	275.100	117.00	0.00	0.00	0.00	40°06'10.814"N	104°44'13.916"W	0.00	
217.00†	0.000	275.100	217.00	0.00	0.00	0.00	40°06'10.814"N	104°44'13.916"W	0.00	
317.00†	0.000	275.100	317.00	0.00	0.00	0.00	40°06'10.814"N	104°44'13.916"W	0.00	
417.00†	0.000	275.100	417.00	0.00	0.00	0.00	40°06'10.814"N	104°44'13.916"W	0.00	
517.00†	0.000	275.100	517.00	0.00	0.00	0.00	40°06'10.814"N	104°44'13.916"W	0.00	
617.00†	0.000	275.100	617.00	0.00	0.00	0.00	40°06'10.814"N	104°44'13.916"W	0.00	
717.00†	0.000	275.100	717.00	0.00	0.00	0.00	40°06'10.814"N	104°44'13.916"W	0.00	
817.00†	0.000	275.100	817.00	0.00	0.00	0.00	40°06'10.814"N	104°44'13.916"W	0.00	
917.00†	0.000	275.100	917.00	0.00	0.00	0.00	40°06'10.814"N	104°44'13.916"W	0.00	
1017.00†	0.000	275.100	1017.00	0.00	0.00	0.00	40°06'10.814"N	104°44'13.916"W	0.00	
1117.00†	0.000	275.100	1117.00	0.00	0.00	0.00	40°06'10.814"N	104°44'13.916"W	0.00	
1217.00†	0.000	275.100	1217.00	0.00	0.00	0.00	40°06'10.814"N	104°44'13.916"W	0.00	
1254.00†	0.000	275.100	1254.00	0.00	0.00	0.00	40°06'10.814"N	104°44'13.916"W	0.00	FOX HILLS BASE
1317.00†	0.000	275.100	1317.00	0.00	0.00	0.00	40°06'10.814"N	104°44'13.916"W	0.00	
1417.00†	0.000	275.100	1417.00	0.00	0.00	0.00	40°06'10.814"N	104°44'13.916"W	0.00	
1450.00	0.000	275.100	1450.00	0.00	0.00	0.00	40°06'10.814"N	104°44'13.916"W	0.00	BEGIN NUDGE
1517.00†	1.340	275.100	1516.99	-0.07	0.07	-0.78	40°06'10.815"N	104°44'13.926"W	2.00	
1617.00†	3.340	275.100	1616.91	-0.44	0.43	-4.85	40°06'10.818"N	104°44'13.978"W	2.00	
1717.00†	5.340	275.100	1716.61	-1.12	1.11	-12.38	40°06'10.825"N	104°44'14.075"W	2.00	
1817.00†	7.340	275.100	1816.00	-2.12	2.09	-23.38	40°06'10.835"N	104°44'14.217"W	2.00	
1917.00†	9.340	275.100	1914.93	-3.43	3.38	-37.83	40°06'10.847"N	104°44'14.403"W	2.00	
1950.00	10.000	275.100	1947.47	-3.93	3.87	-43.35	40°06'10.852"N	104°44'14.474"W	2.00	END NUDGE
2017.00†	10.000	275.100	2013.45	-4.98	4.90	-54.94	40°06'10.862"N	104°44'14.623"W	0.00	
2117.00†	10.000	275.100	2111.93	-6.55	6.45	-72.23	40°06'10.878"N	104°44'14.846"W	0.00	
2217.00†	10.000	275.100	2210.41	-8.11	7.99	-89.53	40°06'10.893"N	104°44'15.068"W	0.00	
2317.00†	10.000	275.100	2308.89	-9.68	9.53	-106.83	40°06'10.908"N	104°44'15.291"W	0.00	
2417.00†	10.000	275.100	2407.37	-11.25	11.08	-124.12	40°06'10.923"N	104°44'15.513"W	0.00	
2517.00†	10.000	275.100	2505.85	-12.81	12.62	-141.42	40°06'10.939"N	104°44'15.736"W	0.00	
2617.00†	10.000	275.100	2604.33	-14.38	14.16	-158.72	40°06'10.954"N	104°44'15.959"W	0.00	
2717.00†	10.000	275.100	2702.81	-15.95	15.71	-176.01	40°06'10.969"N	104°44'16.181"W	0.00	
2817.00†	10.000	275.100	2801.29	-17.52	17.25	-193.31	40°06'10.984"N	104°44'16.404"W	0.00	
2917.00†	10.000	275.100	2899.77	-19.08	18.80	-210.60	40°06'11.000"N	104°44'16.626"W	0.00	
2985.26	10.000	275.100	2967.00	-20.15	19.85	-222.41	40°06'11.010"N	104°44'16.778"W	0.00	BEGIN DROP
3017.00†	9.365	275.100	2998.29	-20.63	20.32	-227.73	40°06'11.015"N	104°44'16.847"W	2.00	
3117.00†	7.365	275.100	3097.22	-21.95	21.62	-242.22	40°06'11.028"N	104°44'17.033"W	2.00	
3217.00†	5.365	275.100	3196.59	-22.95	22.60	-253.26	40°06'11.037"N	104°44'17.175"W	2.00	
3317.00†	3.365	275.100	3296.30	-23.63	23.28	-260.84	40°06'11.044"N	104°44'17.273"W	2.00	
3417.00†	1.365	275.100	3396.21	-24.01	23.65	-264.95	40°06'11.048"N	104°44'17.326"W	2.00	
3485.26	0.000	179.922	3464.47	-24.08	23.72	-265.76	40°06'11.048"N	104°44'17.336"W	2.00	END DROP
3517.00†	0.000	179.922	3496.20	-24.08	23.72	-265.76	40°06'11.048"N	104°44'17.336"W	0.00	
3617.00†	0.000	179.922	3596.20	-24.08	23.72	-265.76	40°06'11.048"N	104°44'17.336"W	0.00	
3717.00†	0.000	179.922	3696.20	-24.08	23.72	-265.76	40°06'11.048"N	104°44'17.336"W	0.00	
3817.00†	0.000	179.922	3796.20	-24.08	23.72	-265.76	40°06'11.048"N	104°44'17.336"W	0.00	



# Planned Wellpath Report

BADDING 16C-35HZ (PERMIT REV-2) PWP

Page 3 of 7



REFERENCE WELLPATH IDENTIFICATION			
Operator	KERR-MCGEE OIL & GAS ONSHORE LP	Slot	SLOT#03 BADDING 16C-35HZ (350'FSL & 652'FEL, SEC.26)
Area	COLORADO	Well	BADDING 16C-35HZ
Field	WELD COUNTY (KERR MCGEE)	Wellbore	BADDING 16C-35HZ PWB
Facility	SEC.26-T2N-R66W		

WELLPATH DATA (149 stations) † = interpolated/extrapolated station										
MD [ft]	Inclination [°]	Azimuth [°]	TVD [ft]	Vert Sect [ft]	North [ft]	East [ft]	Latitude	Longitude	DLS [°/100ft]	Comments
3917.00†	0.000	179.922	3896.20	-24.08	23.72	-265.76	40°06'11.048"N	104°44'17.336"W	0.00	
4017.00†	0.000	179.922	3996.20	-24.08	23.72	-265.76	40°06'11.048"N	104°44'17.336"W	0.00	
4117.00†	0.000	179.922	4096.20	-24.08	23.72	-265.76	40°06'11.048"N	104°44'17.336"W	0.00	
4217.00†	0.000	179.922	4196.20	-24.08	23.72	-265.76	40°06'11.048"N	104°44'17.336"W	0.00	
4317.00†	0.000	179.922	4296.20	-24.08	23.72	-265.76	40°06'11.048"N	104°44'17.336"W	0.00	
4320.80†	0.000	179.922	4300.00	-24.08	23.72	-265.76	40°06'11.048"N	104°44'17.336"W	0.00	PARKMAN
4417.00†	0.000	179.922	4396.20	-24.08	23.72	-265.76	40°06'11.048"N	104°44'17.336"W	0.00	
4517.00†	0.000	179.922	4496.20	-24.08	23.72	-265.76	40°06'11.048"N	104°44'17.336"W	0.00	
4617.00†	0.000	179.922	4596.20	-24.08	23.72	-265.76	40°06'11.048"N	104°44'17.336"W	0.00	
4697.80†	0.000	179.922	4677.00	-24.08	23.72	-265.76	40°06'11.048"N	104°44'17.336"W	0.00	SUSSEX
4717.00†	0.000	179.922	4696.20	-24.08	23.72	-265.76	40°06'11.048"N	104°44'17.336"W	0.00	
4817.00†	0.000	179.922	4796.20	-24.08	23.72	-265.76	40°06'11.048"N	104°44'17.336"W	0.00	
4917.00†	0.000	179.922	4896.20	-24.08	23.72	-265.76	40°06'11.048"N	104°44'17.336"W	0.00	
5017.00†	0.000	179.922	4996.20	-24.08	23.72	-265.76	40°06'11.048"N	104°44'17.336"W	0.00	
5117.00†	0.000	179.922	5096.20	-24.08	23.72	-265.76	40°06'11.048"N	104°44'17.336"W	0.00	
5217.00†	0.000	179.922	5196.20	-24.08	23.72	-265.76	40°06'11.048"N	104°44'17.336"W	0.00	
5317.00†	0.000	179.922	5296.20	-24.08	23.72	-265.76	40°06'11.048"N	104°44'17.336"W	0.00	
5417.00†	0.000	179.922	5396.20	-24.08	23.72	-265.76	40°06'11.048"N	104°44'17.336"W	0.00	
5517.00†	0.000	179.922	5496.20	-24.08	23.72	-265.76	40°06'11.048"N	104°44'17.336"W	0.00	
5617.00†	0.000	179.922	5596.20	-24.08	23.72	-265.76	40°06'11.048"N	104°44'17.336"W	0.00	
5717.00†	0.000	179.922	5696.20	-24.08	23.72	-265.76	40°06'11.048"N	104°44'17.336"W	0.00	
5817.00†	0.000	179.922	5796.20	-24.08	23.72	-265.76	40°06'11.048"N	104°44'17.336"W	0.00	
5917.00†	0.000	179.922	5896.20	-24.08	23.72	-265.76	40°06'11.048"N	104°44'17.336"W	0.00	
6017.00†	0.000	179.922	5996.20	-24.08	23.72	-265.76	40°06'11.048"N	104°44'17.336"W	0.00	
6117.00†	0.000	179.922	6096.20	-24.08	23.72	-265.76	40°06'11.048"N	104°44'17.336"W	0.00	
6217.00†	0.000	179.922	6196.20	-24.08	23.72	-265.76	40°06'11.048"N	104°44'17.336"W	0.00	
6317.00†	0.000	179.922	6296.20	-24.08	23.72	-265.76	40°06'11.048"N	104°44'17.336"W	0.00	
6417.00†	0.000	179.922	6396.20	-24.08	23.72	-265.76	40°06'11.048"N	104°44'17.336"W	0.00	
6517.00†	0.000	179.922	6496.20	-24.08	23.72	-265.76	40°06'11.048"N	104°44'17.336"W	0.00	
6617.00†	0.000	179.922	6596.20	-24.08	23.72	-265.76	40°06'11.048"N	104°44'17.336"W	0.00	
6717.00†	0.000	179.922	6696.20	-24.08	23.72	-265.76	40°06'11.048"N	104°44'17.336"W	0.00	
6817.00†	0.000	179.922	6796.20	-24.08	23.72	-265.76	40°06'11.048"N	104°44'17.336"W	0.00	
6917.00†	0.000	179.922	6896.20	-24.08	23.72	-265.76	40°06'11.048"N	104°44'17.336"W	0.00	
6919.84†	0.000	179.922	6899.04	-24.08	23.72	-265.76	40°06'11.048"N	104°44'17.336"W	0.00	4 1/2" LINER TOP
7017.00†	0.000	179.922	6996.20	-24.08	23.72	-265.76	40°06'11.048"N	104°44'17.336"W	0.00	
7019.84	0.000	179.922	6999.05	-24.08	23.72	-265.76	40°06'11.048"N	104°44'17.336"W	0.00	KOP, BUILD @ 10°/100'
7117.00†	9.716	179.922	7095.74	-15.86	15.50	-265.75	40°06'10.967"N	104°44'17.336"W	10.00	
7217.00†	19.716	179.922	7192.33	9.51	-9.87	-265.71	40°06'10.716"N	104°44'17.335"W	10.00	
7235.88†	21.604	179.922	7210.00	16.17	-16.53	-265.71	40°06'10.651"N	104°44'17.335"W	10.00	SHARON SPRINGS
7282.95†	26.310	179.922	7253.00	35.27	-35.64	-265.68	40°06'10.462"N	104°44'17.335"W	10.00	NIOBRARA A
7317.00†	29.716	179.922	7283.06	51.27	-51.63	-265.66	40°06'10.304"N	104°44'17.335"W	10.00	
7386.27†	36.643	179.922	7341.00	89.15	-89.51	-265.61	40°06'09.929"N	104°44'17.334"W	10.00	NIOBRARA B CHALK
7417.00†	39.716	179.922	7365.15	108.14	-108.51	-265.58	40°06'09.742"N	104°44'17.334"W	10.00	
7478.12†	45.828	179.922	7410.00	149.63	-149.99	-265.52	40°06'09.332"N	104°44'17.333"W	10.00	NIOBRARA C
7517.00†	49.716	179.922	7436.12	178.41	-178.78	-265.49	40°06'09.047"N	104°44'17.333"W	10.00	



# Planned Wellpath Report

BADDING 16C-35HZ (PERMIT REV-2) PWP

Page 4 of 7



## REFERENCE WELLPATH IDENTIFICATION

Operator	KERR-MCGEE OIL & GAS ONSHORE LP	Slot	SLOT#03 BADDING 16C-35HZ (350'FSL & 652'FEL, SEC.26)
Area	COLORADO	Well	BADDING 16C-35HZ
Field	WELD COUNTY (KERR MCGEE)	Wellbore	BADDING 16C-35HZ PWB
Facility	SEC.26-T2N-R66W		

## WELLPATH DATA (149 stations) † = interpolated/extrapolated station

MD [ft]	Inclination [°]	Azimuth [°]	TVD [ft]	Vert Sect [ft]	North [ft]	East [ft]	Latitude	Longitude	DLS [°/100ft]	Comments
7617.00†	59.716	179.922	7493.81	259.94	-260.30	-265.38	40°06'08.242"N	104°44'17.331"W	10.00	
7717.00†	69.716	179.922	7536.47	350.25	-350.61	-265.25	40°06'07.349"N	104°44'17.329"W	10.00	
7753.41†	73.357	179.922	7548.00	384.78	-385.14	-265.21	40°06'07.008"N	104°44'17.329"W	10.00	FORT HAYS
7817.00†	79.716	179.922	7562.80	446.59	-446.95	-265.12	40°06'06.397"N	104°44'17.328"W	10.00	
7885.93†	86.609	179.922	7571.00	514.98	-515.35	-265.03	40°06'05.721"N	104°44'17.327"W	10.00	CODELL
7917.00†	89.716	179.922	7572.00	546.03	-546.40	-264.99	40°06'05.414"N	104°44'17.326"W	10.00	
7921.51	90.167	179.922	7572.00	550.55	-550.91	-264.98	40°06'05.370"N	104°44'17.326"W	10.00	LANDING POINT
8017.00†	90.167	179.922	7571.72	646.03	-646.40	-264.85	40°06'04.426"N	104°44'17.324"W	0.00	
8117.00†	90.167	179.922	7571.43	746.03	-746.40	-264.72	40°06'03.438"N	104°44'17.323"W	0.00	
8217.00†	90.167	179.922	7571.14	846.03	-846.39	-264.58	40°06'02.450"N	104°44'17.321"W	0.00	
8317.00†	90.167	179.922	7570.85	946.03	-946.39	-264.45	40°06'01.462"N	104°44'17.319"W	0.00	
8417.00†	90.167	179.922	7570.56	1046.03	-1046.39	-264.31	40°06'00.473"N	104°44'17.317"W	0.00	
8517.00†	90.167	179.922	7570.26	1146.03	-1146.39	-264.17	40°05'59.485"N	104°44'17.315"W	0.00	
8617.00†	90.167	179.922	7569.97	1246.03	-1246.39	-264.04	40°05'58.497"N	104°44'17.314"W	0.00	
8717.00†	90.167	179.922	7569.68	1346.03	-1346.39	-263.90	40°05'57.509"N	104°44'17.312"W	0.00	
8817.00†	90.167	179.922	7569.39	1446.03	-1446.39	-263.77	40°05'56.521"N	104°44'17.310"W	0.00	
8917.00†	90.167	179.922	7569.10	1546.03	-1546.39	-263.63	40°05'55.532"N	104°44'17.308"W	0.00	
9017.00†	90.167	179.922	7568.80	1646.03	-1646.39	-263.50	40°05'54.544"N	104°44'17.307"W	0.00	
9117.00†	90.167	179.922	7568.51	1746.03	-1746.39	-263.36	40°05'53.556"N	104°44'17.305"W	0.00	
9217.00†	90.167	179.922	7568.22	1846.03	-1846.39	-263.22	40°05'52.568"N	104°44'17.303"W	0.00	
9317.00†	90.167	179.922	7567.93	1946.03	-1946.39	-263.09	40°05'51.579"N	104°44'17.301"W	0.00	
9417.00†	90.167	179.922	7567.64	2046.03	-2046.39	-262.95	40°05'50.591"N	104°44'17.300"W	0.00	
9517.00†	90.167	179.922	7567.35	2146.03	-2146.39	-262.82	40°05'49.603"N	104°44'17.298"W	0.00	
9617.00†	90.167	179.922	7567.05	2246.03	-2246.39	-262.68	40°05'48.615"N	104°44'17.296"W	0.00	
9717.00†	90.167	179.922	7566.76	2346.03	-2346.39	-262.55	40°05'47.627"N	104°44'17.294"W	0.00	
9817.00†	90.167	179.922	7566.47	2446.03	-2446.39	-262.41	40°05'46.638"N	104°44'17.293"W	0.00	
9917.00†	90.167	179.922	7566.18	2546.03	-2546.39	-262.28	40°05'45.650"N	104°44'17.291"W	0.00	
10017.00†	90.167	179.922	7565.89	2646.03	-2646.39	-262.14	40°05'44.662"N	104°44'17.289"W	0.00	
10117.00†	90.167	179.922	7565.60	2746.03	-2746.38	-262.00	40°05'43.674"N	104°44'17.287"W	0.00	
10217.00†	90.167	179.922	7565.30	2846.03	-2846.38	-261.87	40°05'42.686"N	104°44'17.286"W	0.00	
10317.00†	90.167	179.922	7565.01	2946.02	-2946.38	-261.73	40°05'41.697"N	104°44'17.284"W	0.00	
10417.00†	90.167	179.922	7564.72	3046.02	-3046.38	-261.60	40°05'40.709"N	104°44'17.282"W	0.00	
10517.00†	90.167	179.922	7564.43	3146.02	-3146.38	-261.46	40°05'39.721"N	104°44'17.280"W	0.00	
10617.00†	90.167	179.922	7564.14	3246.02	-3246.38	-261.33	40°05'38.733"N	104°44'17.279"W	0.00	
10717.00†	90.167	179.922	7563.85	3346.02	-3346.38	-261.19	40°05'37.745"N	104°44'17.277"W	0.00	
10817.00†	90.167	179.922	7563.55	3446.02	-3446.38	-261.06	40°05'36.756"N	104°44'17.275"W	0.00	
10917.00†	90.167	179.922	7563.26	3546.02	-3546.38	-260.92	40°05'35.768"N	104°44'17.273"W	0.00	
11017.00†	90.167	179.922	7562.97	3646.02	-3646.38	-260.78	40°05'34.780"N	104°44'17.272"W	0.00	
11117.00†	90.167	179.922	7562.68	3746.02	-3746.38	-260.65	40°05'33.792"N	104°44'17.270"W	0.00	
11217.00†	90.167	179.922	7562.39	3846.02	-3846.38	-260.51	40°05'32.803"N	104°44'17.268"W	0.00	
11317.00†	90.167	179.922	7562.09	3946.02	-3946.38	-260.38	40°05'31.815"N	104°44'17.266"W	0.00	
11417.00†	90.167	179.922	7561.80	4046.02	-4046.38	-260.24	40°05'30.827"N	104°44'17.265"W	0.00	
11517.00†	90.167	179.922	7561.51	4146.02	-4146.38	-260.11	40°05'29.839"N	104°44'17.263"W	0.00	
11617.00†	90.167	179.922	7561.22	4246.02	-4246.38	-259.97	40°05'28.851"N	104°44'17.261"W	0.00	
11717.00†	90.167	179.922	7560.93	4346.02	-4346.38	-259.84	40°05'27.862"N	104°44'17.259"W	0.00	





# Planned Wellpath Report

BADDING 16C-35HZ (PERMIT REV-2) PWP

Page 5 of 7



## REFERENCE WELLPATH IDENTIFICATION

Operator	KERR-MCGEE OIL & GAS ONSHORE LP	Slot	SLOT#03 BADDING 16C-35HZ (350'FSL & 652'FEL, SEC.26)
Area	COLORADO	Well	BADDING 16C-35HZ
Field	WELD COUNTY (KERR MCGEE)	Wellbore	BADDING 16C-35HZ PWB
Facility	SEC.26-T2N-R66W		

## WELLPATH DATA (149 stations) † = interpolated/extrapolated station

MD [ft]	Inclination [°]	Azimuth [°]	TVD [ft]	Vert Sect [ft]	North [ft]	East [ft]	Latitude	Longitude	DLS [°/100ft]	Comments
11817.00†	90.167	179.922	7560.64	4446.02	-4446.38	-259.70	40°05'26.874"N	104°44'17.257"W	0.00	
11917.00†	90.167	179.922	7560.34	4546.02	-4546.38	-259.56	40°05'25.886"N	104°44'17.256"W	0.00	
12017.00†	90.167	179.922	7560.05	4646.02	-4646.38	-259.43	40°05'24.898"N	104°44'17.254"W	0.00	
12117.00†	90.167	179.922	7559.76	4746.02	-4746.37	-259.29	40°05'23.910"N	104°44'17.252"W	0.00	
12217.00†	90.167	179.922	7559.47	4846.02	-4846.37	-259.16	40°05'22.921"N	104°44'17.250"W	0.00	
12317.00†	90.167	179.922	7559.18	4946.02	-4946.37	-259.02	40°05'21.933"N	104°44'17.249"W	0.00	
12417.00†	90.167	179.922	7558.89	5046.02	-5046.37	-258.89	40°05'20.945"N	104°44'17.247"W	0.00	
12517.00†	90.167	179.922	7558.59	5146.02	-5146.37	-258.75	40°05'19.957"N	104°44'17.245"W	0.00	
12617.00†	90.167	179.922	7558.30	5246.01	-5246.37	-258.62	40°05'18.969"N	104°44'17.243"W	0.00	
12717.00†	90.167	179.922	7558.01	5346.01	-5346.37	-258.48	40°05'17.980"N	104°44'17.242"W	0.00	
12817.00†	90.167	179.922	7557.72	5446.01	-5446.37	-258.34	40°05'16.992"N	104°44'17.240"W	0.00	
12917.00†	90.167	179.922	7557.43	5546.01	-5546.37	-258.21	40°05'16.004"N	104°44'17.238"W	0.00	
13017.00†	90.167	179.922	7557.14	5646.01	-5646.37	-258.07	40°05'15.016"N	104°44'17.236"W	0.00	
13063.40	90.167	179.922	7557.00 <sup>†</sup>	5692.41	-5692.76	-258.01	40°05'14.557"N	104°44'17.236"W	0.00	TOTAL DEPTH

## HOLE & CASING SECTIONS -

Ref Wellbore: BADDING 16C-35HZ PWB Ref Wellpath: BADDING 16C-35HZ (PERMIT REV-2) PWP

String/Diameter	Start MD [ft]	End MD [ft]	Interval [ft]	Start TVD [ft]	End TVD [ft]	Start N/S [ft]	Start E/W [ft]	End N/S [ft]	End E/W [ft]
13.5in Open Hole	17.00	1304.00	1287.00	17.00	1304.00	0.00	0.00	0.00	0.00
9.625in Casing Surface	17.00	1304.00	1287.00	17.00	1304.00	0.00	0.00	0.00	0.00
8.75in Open Hole	1304.00	7921.51	6617.51	1304.00	7572.00	0.00	0.00	-550.91	-264.98
7in Casing Intermediate	17.00	7921.51	7904.51	17.00	7572.00	0.00	0.00	-550.91	-264.98
6.125in Open Hole	7921.51	13063.40	5141.89	7572.00	7557.00	-550.91	-264.98	-5692.76	-258.01
4.5in Casing Production	17.00	13063.40	13046.40	17.00	7557.00	0.00	0.00	-5692.76	-258.01



# Planned Wellpath Report

BADDING 16C-35HZ (PERMIT REV-2) PWP

Page 6 of 7



REFERENCE WELLPATH IDENTIFICATION				
Operator	KERR-MCGEE OIL & GAS ONSHORE LP	Slot	SLOT#03 BADDING 16C-35HZ (350'FSL & 652'FEL, SEC.26)	
Area	COLORADO	Well	BADDING 16C-35HZ	
Field	WELD COUNTY (KERR MCGEE)	Wellbore	BADDING 16C-35HZ PWB	
Facility	SEC.26-T2N-R66W			

TARGETS									
Name	MD [ft]	TVD [ft]	North [ft]	East [ft]	Grid East [US ft]	Grid North [US ft]	Latitude	Longitude	Shape
BADDING SECTION 26 LINES		0.00	-0.30	-52.06	3213324.01	1281285.67	40°06'10.811"N	104°44'14.586"W	polygon
BADDING SECTION 35 LINES		0.00	-0.30	-52.06	3213324.01	1281285.67	40°06'10.811"N	104°44'14.586"W	polygon
1) BADDING 16C-35HZ BHL ON PLAT REV-1 (1'FSL & 919'FEL, SEC. 35)	13063.40	7557.00	-5692.76	-258.01	3213167.05	1275591.89	40°05'14.557"N	104°44'17.236"W	point
BADDING 16C-35HZ LAND BOX		7600.00	0.00	0.00	3213376.07	1281286.42	40°06'10.814"N	104°44'13.916"W	polygon

SURVEY PROGRAM - Ref Wellbore: BADDING 16C-35HZ PWB					Ref Wellpath: BADDING 16C-35HZ (PERMIT REV-2) PWP				
Start MD [ft]	End MD [ft]	Positional Uncertainty Model			Log Name/Comment		Wellbore		
17.00	7921.51	NaviTrak (Standard)					BADDING 16C-35HZ PWB		
7921.51	13063.40	OnTrak (Standard)					BADDING 16C-35HZ PWB		



# Planned Wellpath Report

BADDING 16C-35HZ (PERMIT REV-2) PWP

Page 7 of 7



## REFERENCE WELLPATH IDENTIFICATION

Operator	KERR-MCGEE OIL & GAS ONSHORE LP	Slot	SLOT#03 BADDING 16C-35HZ (350'FSL & 652'FEL, SEC.26)
Area	COLORADO	Well	BADDING 16C-35HZ
Field	WELD COUNTY (KERR MCGEE)	Wellbore	BADDING 16C-35HZ PWB
Facility	SEC.26-T2N-R66W		

## WELLPATH COMMENTS

MD [ft]	Inclination [°]	Azimuth [°]	TVD [ft]	Comment
1254.00	0.000	275.100	1254.00	FOX HILLS BASE
4320.80	0.000	179.922	4300.00	PARKMAN
4697.80	0.000	179.922	4677.00	SUSSEX
6919.84	0.000	179.922	6899.04	4 1/2" LINER TOP
7235.88	21.604	179.922	7210.00	SHARON SPRINGS
7282.95	26.310	179.922	7253.00	NIOBRARA A
7386.27	36.643	179.922	7341.00	NIOBRARA B CHALK
7478.12	45.828	179.922	7410.00	NIOBRARA C
7753.41	73.357	179.922	7548.00	FORT HAYS
7885.93	86.609	179.922	7571.00	CODELL