



Baker Atlas

RESERVOIR PERFORMANCE MONITOR

File No: CH075927	Company WPX ENERGY	Well WPX ENERGY GM 313-34
API No: 05045193070000	Field GRAND VALLEY	GRAND VALLEY
	County GARFIELD	State COLORADO
	Location	Other Services
34-65-96W GM 23-34 PAD NABORS 574	SHL: 1962' FSL X 2153' FWL BHL: 1681' FSL X 848' FWL (NWSW) SEC 34 TWP 6S RGE 96W	BOND LOG
Permanent Datum Log Measured From Drill Measured From	GL Elevation 5355.5 ft KB 26 ft Above P. D. KELLY BUSHING	Elevations KB 5381.5 ft DF GL 5355.5 ft

Date	18/AUG/13	
Run	ONE	
Service Order	624403	
Depth Driller	6669 ft	
Depth Logger	6585 ft	
Bottom Logged Interval	6680 ft	
Top Logged Interval	5358 ft	
Time Started	1030	
Time Finished	1530	
Operator Rig Time	5 HRS	
Type of Fluid in Hole	WATER	
Fluid Density	NA	
Salinity	NA	
Fluid Level	62 ft	
Logged Cement Top	NA	
Wellhead Pressure	0 psi	
Maximum Hole Deviation	NA	
Nominal Logging Speed	10 fpm	
Maximum Recorded Temperature	211 degF	
Reference Log	BAKER HUGHES BOND LOG	
Reference Log Date	18/AUG/15	
Equipment No.	4271	GRAND JCT
Recorded By	FLOYD RENEAU	
Witnessed By	LEWIS CARTER	

- FOLD HERE

In making interpretations of logs, our employees will give the customer the benefit of their best judgement. But since all interpretations are opinions based on inferences from electrical or other measurements, we cannot, and we do not guarantee the accuracy or correctness of any interpretation. We shall not be liable or responsible for any loss, cost, damages, or expenses whatsoever incurred or sustained by the customer resulting from any interpretation made by any of our employees.

Borehole Record		
Bit Size	From	To
13.5 in	0 ft	900 ft
8.75 in	900 ft	6669 ft

Casing Record				
Size	Weight	Grade	From	To
9.625 in			0 ft	900 ft
4.5 in	11.6 lbm/ft	1-80	0 ft	6669 ft

Remarks
All data on this log is shifted and depth matched using the Gamma Ray curve to the Baker Hughes bond log dated 8/18/2013 at the client's request.
The amount of linear shift is 12 feet.
Logged in PNC-3D mode.
BHT = 211°F
SJ = 3274' - 5299'

Equipment Data					
Run	Trip	Tool	Series Number	Serial Number	Position
1	1	RPM	8281FA	10307727	FREE
1	1	RPM	8281PA	10585555	FREE
1	1	RPM	8281EA	10190984	FREE
1	1	GR	8282XY	10485470	FREE
1	1	TEL/CCL	8248ED	10296408	FREE
1	1	PCM	8250EA	10397894	FREE

MAIN SECTION
PNC 3-D MODE

SPL PROCESSING					
MEASUREMENT TYPE	PARAMETER	VALUE	UNITS	TOP	BOTTOM
PNC Porosity	Borehole	Cased		3319.750	6599.000
PNC Porosity	Borehole Size	8.750	inch	3319.750	6599.000
PNC Porosity	Casing Size	4.500	inch	3319.750	6599.000
PNC Porosity	Gas Filled	Non Gas Filled		3319.750	6599.000
PNC Porosity	Matrix	Sandstone		3319.750	6599.000

DEPTH OFFSETS (for Acquired Curves)							
SERIES	DEPTH OFFSET	ACQUIRED CURVES					
8248ED	-15.320	FLTM					
8248ED	-13.320	CCL	CHV				
8262XY	-10.189	GR4					
8281XA	-0.662	HVC3Q0	SEQ3	AMA3	AML3	BKX	CXS
		CPT3Q0	CPT3Q2	CPT3Q3	CPT3Q4	ET3	IXS
		MCS3	MCS3Q0	QCAL3	RGN3	RICX	SDA3
		SDL3	SGA3	SGL3	STA3	XS	ASPEC3
		AMB3	AMF3	CHF3	IXSC	IXSN	RAT023
		FLYK0	FLYK30	FLYK7	FLYK70	QD70	QD70

		RTCX	RTN13C	RTN23	RTN23C	SD3D	SG3D
		SGB3	SGF3	WDTH3	CXSR	IXSR	XSR
		RICXR					
8281XA	-0.250	HVC2Q0	SEQ2	AMA2	AMB2	AMF2	AML2
		BKL	CHF2	CLS	CPT2Q0	CPT2Q2	CPT2Q3
		CPT2Q4	ET2	ILS	LS	MCS2	MCS2Q0
		QCAL2	RGN2	RICL	RONE23	RTW023	SDA2
		SDL2	SGA2	SGB2	SGF2	SGK2	SGL2
		STA2	ASPEC2	ILSC	ILSN	WDTH2	RICLC
		CLSR	ILSR	LSR	RICLR		
8281XA	0.000	CPRS	HVC1Q0	MV	SEQ	SEQ1	AMA1
		AMB1	AME1	AMF1	AML1	BKS	CHF1
		CSS	CORB	CORF	CPT1Q0	CPT1Q2	CPT1Q2A
		CPT1Q2B	CPT1Q2C	CPT1Q3	CPT1Q4	CPT1Q5	ET1
		G1	G2	GE1S	GE2S	ISS	MCS1
		MCS1Q0	QA1	QCAL1	QM1	RAT0	RAT013
		RBOR	RGN1	RICS	RIN	RONE	RPOR
		RTW0	RIN13	RONE13	RTW013	SALB	SC1
		SDA1	SDL1	SGA1	SGB1	SGBC	SGE1
		SGF1	SGFC	SGK1	SGL1	SS	SS2
		STA1	PD1S	PD2S	PD3S	MD1S	MD2S
		MD3S	DG1S	DG2S	DG3S	PD1M	PD2M
		PD3M	MD1M	MD2M	MD3M	DG1M	DG2M
		DG3M	MVS	MA	MVM	FILV	IAM
		TA	PVM	PVS	IAS	SSTAT	QPD1
		QPD2	QPD3	QMD1	QMD2	QMD3	QDG1
		QDG2	QDG3	QMA	QTA	QFILV	QMV
		QPV	QIA	DERR	DCNT	QPK1	QSA1
		PKS1	ASPEC1	HOC	FE2XC	ISSC	RINC
		ISSN	RDEN	WDTH1	RICSC	CSSR	G1R
		G2R	ISSR	SSR	SS2R	RATOR	RAT013R
		RBORR	RICSR	RINR	RIN13R	RONER	RPORR
		RTWOR					
SYSTEM	0.000	TEN	TTEN				

Created by : RPM9, v5.3.1.0

Plotted by : PlotMgr, v5.4.504

Company : WPX ENERGY

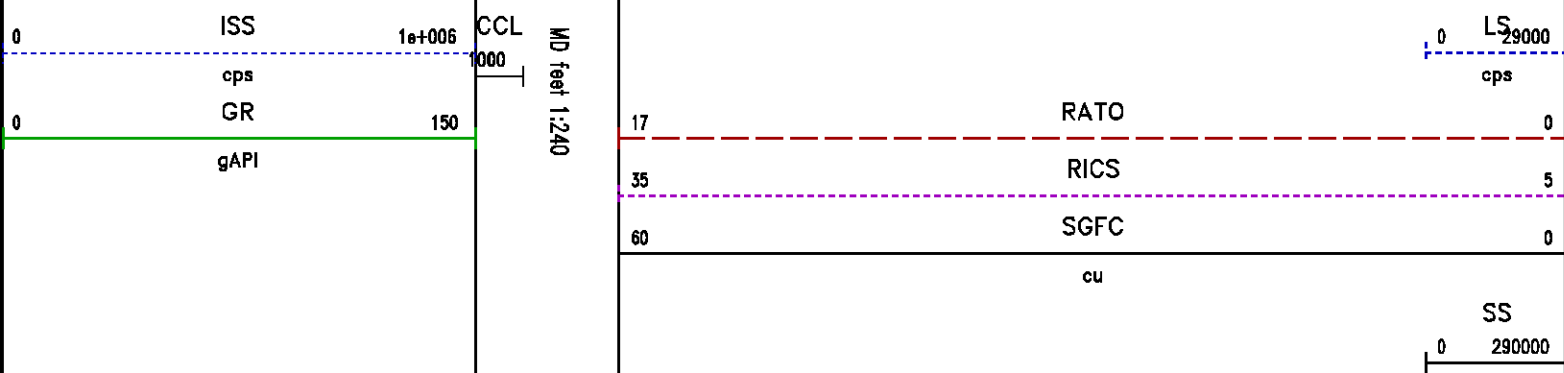
Well : WPX ENERGY GM 313-34

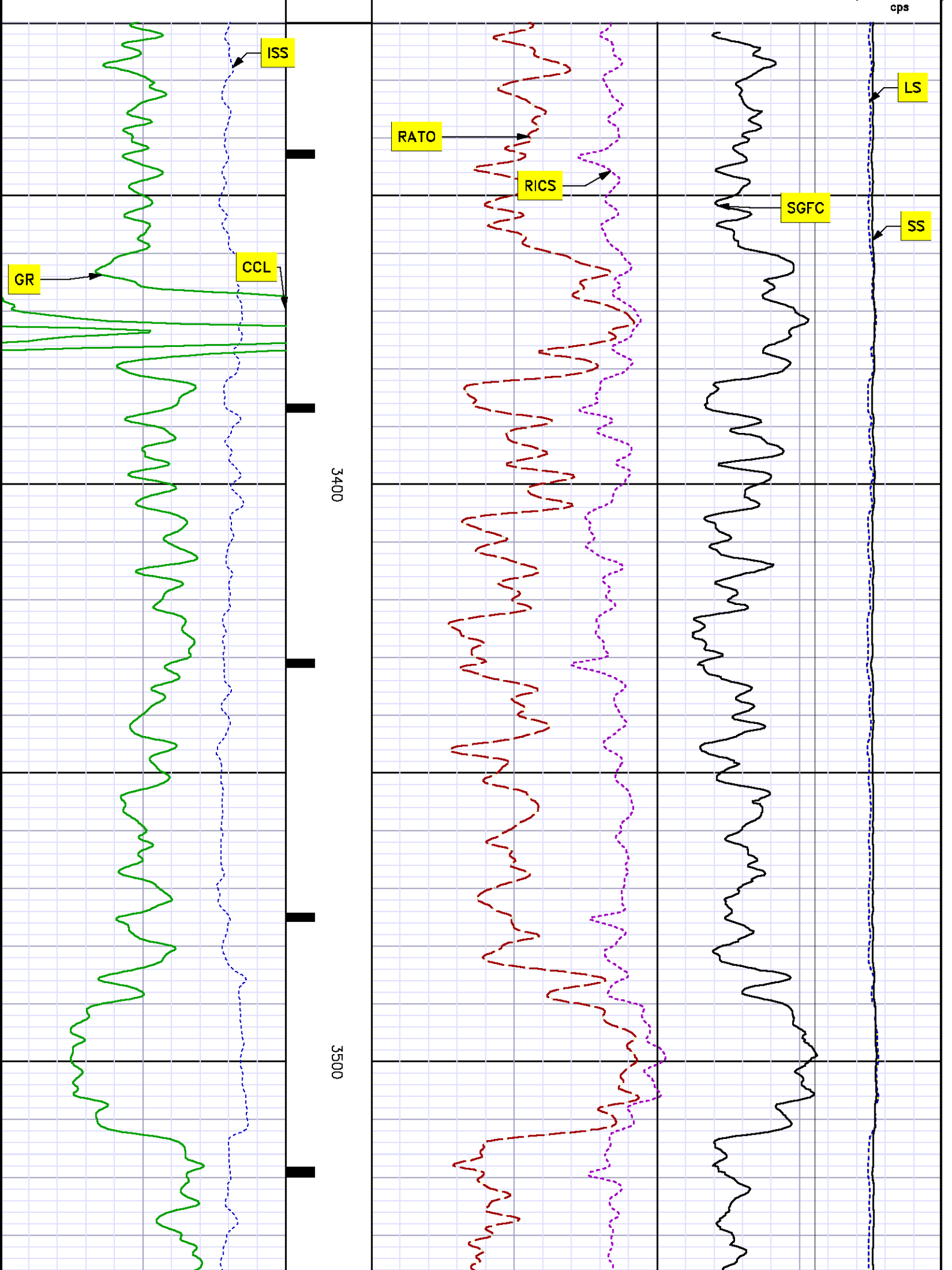
File Name : d:\welldata\wpx energy\gm 313-34\rpm313\main.tif

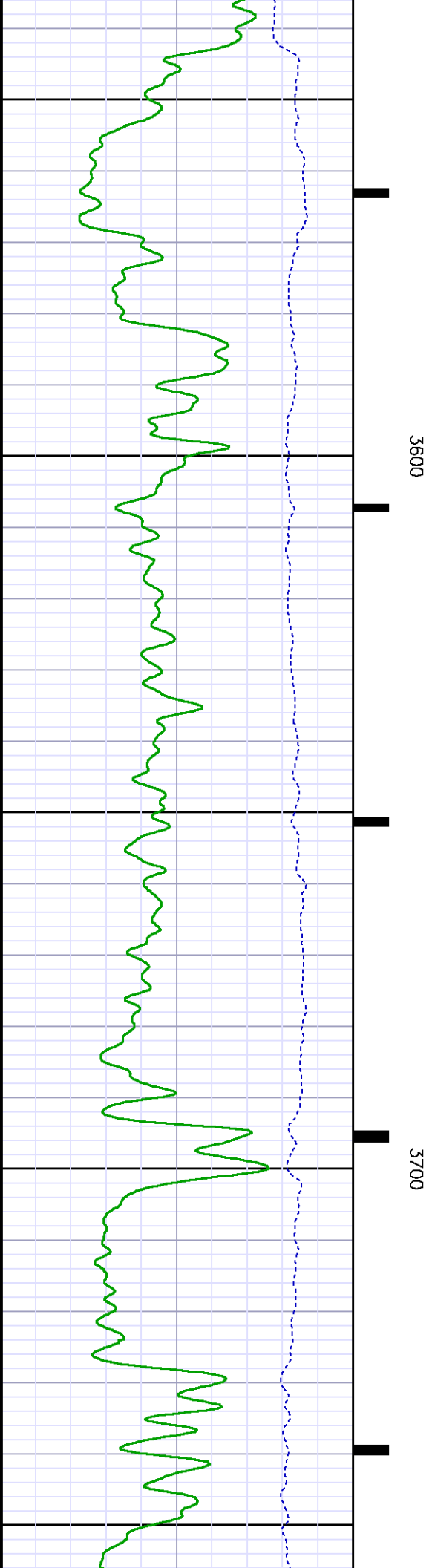
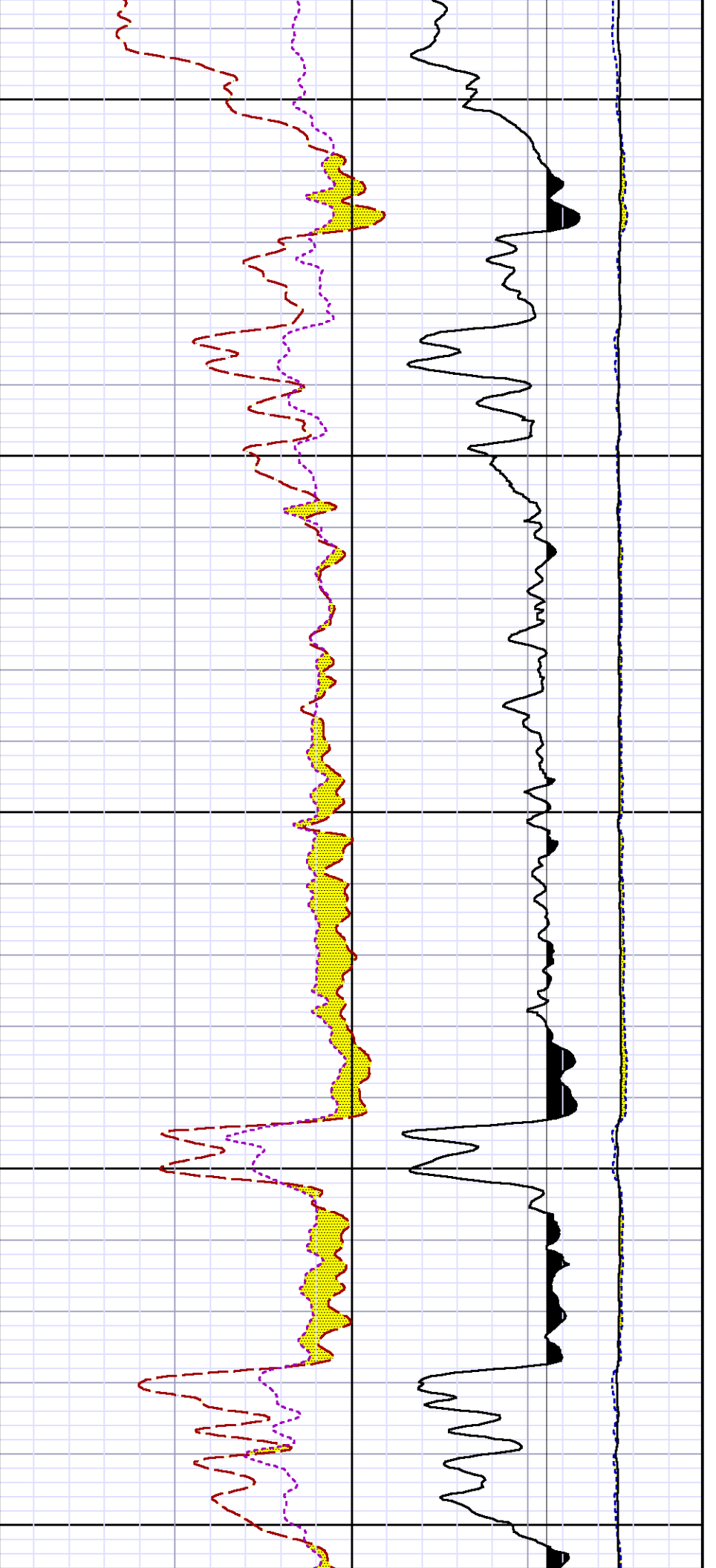
Mode : PlotMgr 5.4.504

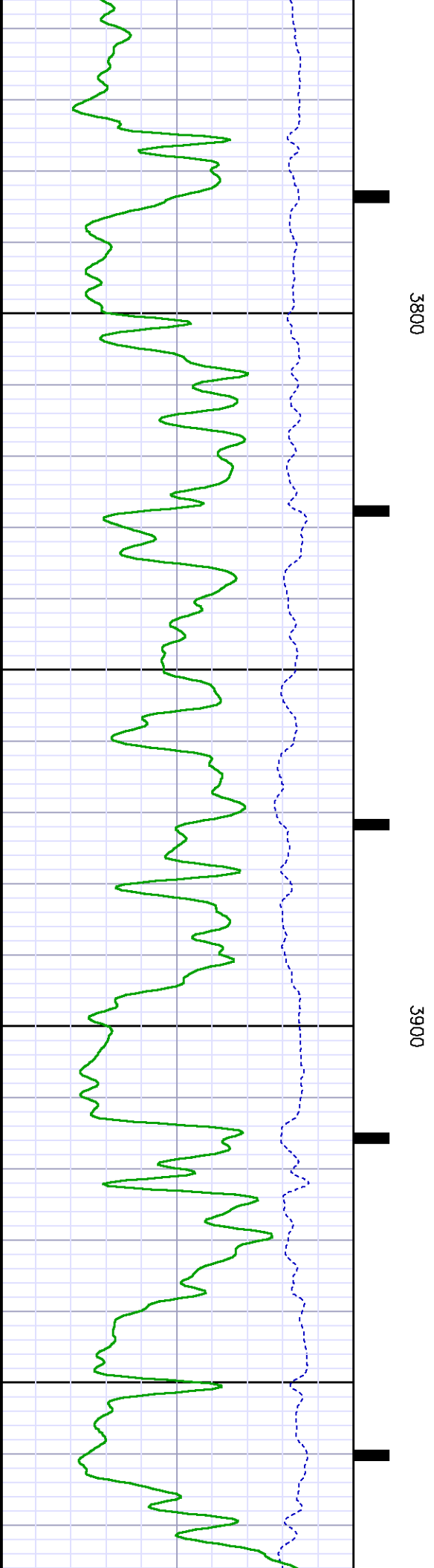
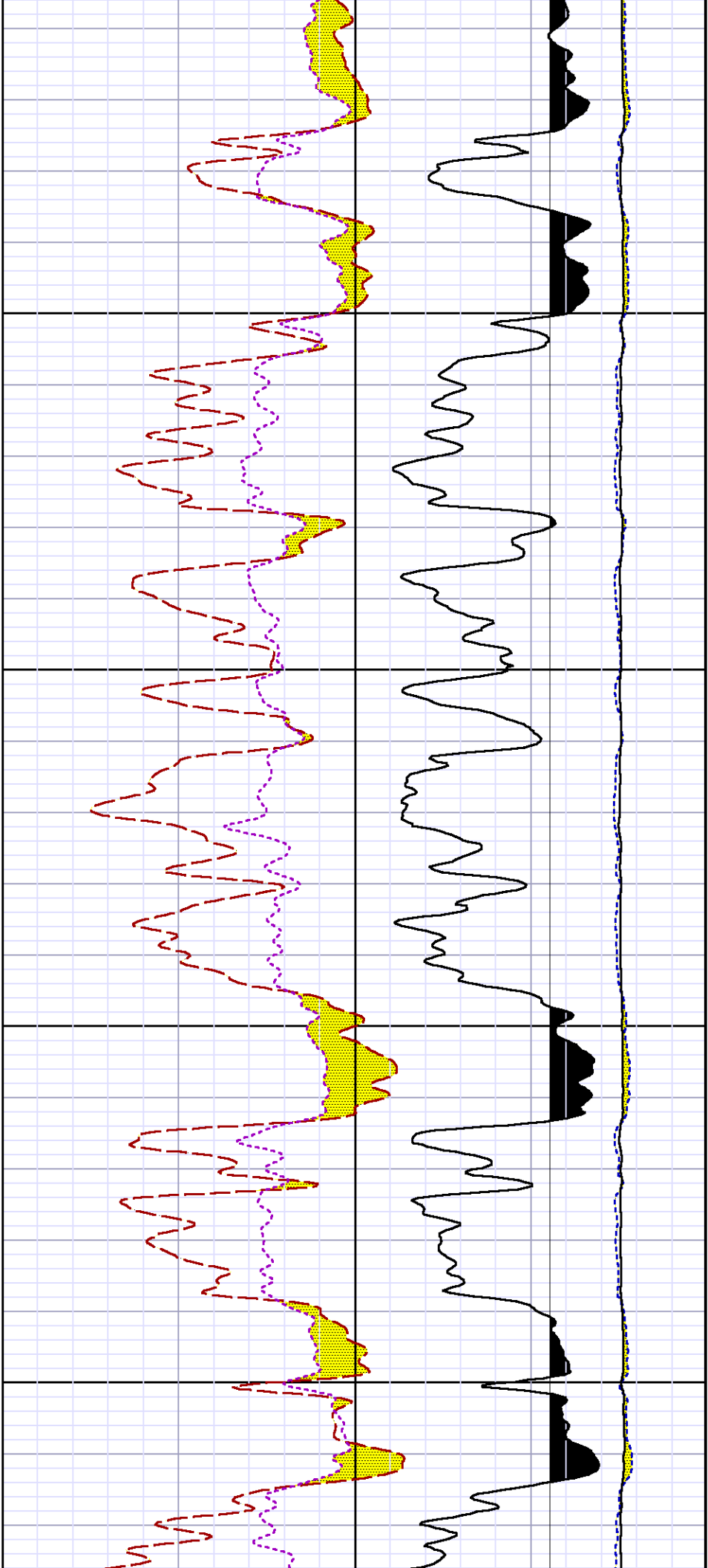
Interval : 3320.00 - 6591.00 feet UP

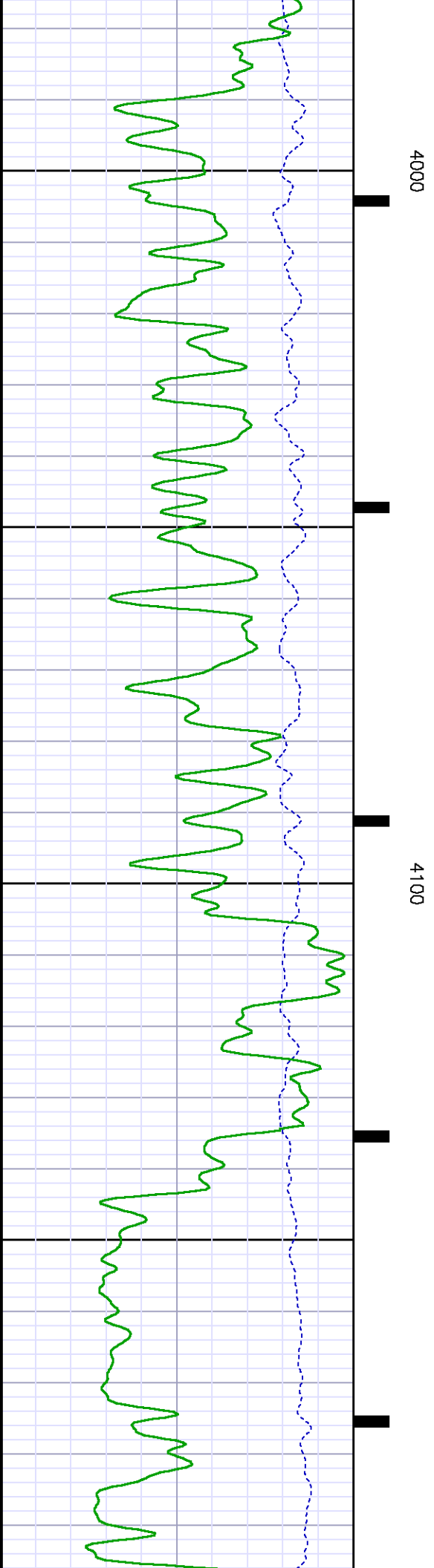
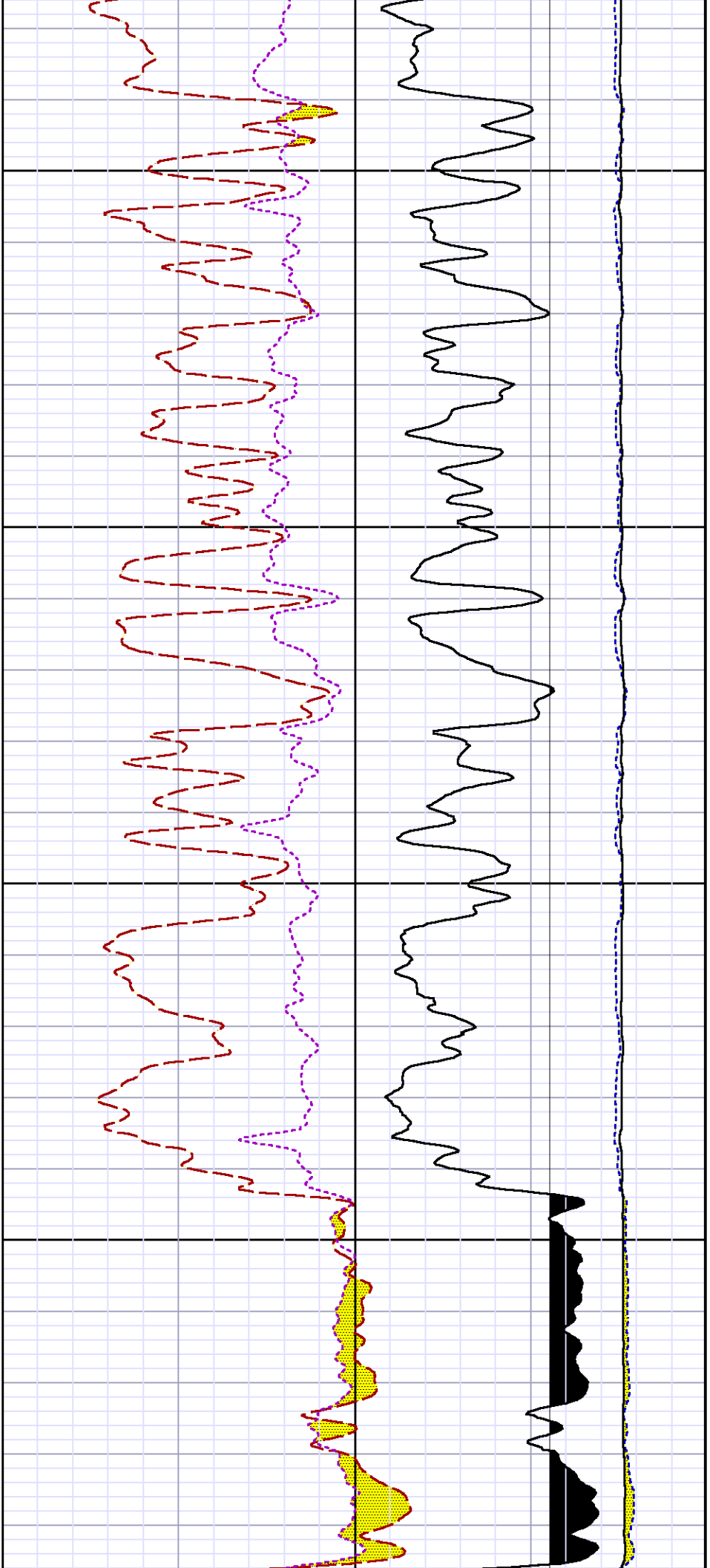
Created : 8/18/2013 11:38:23 AM

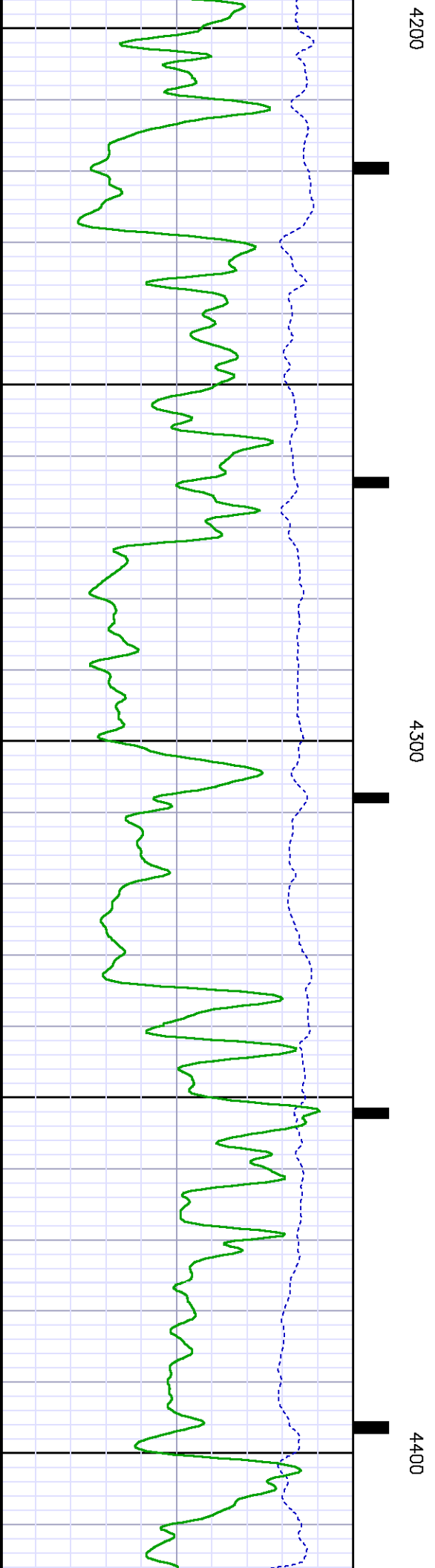
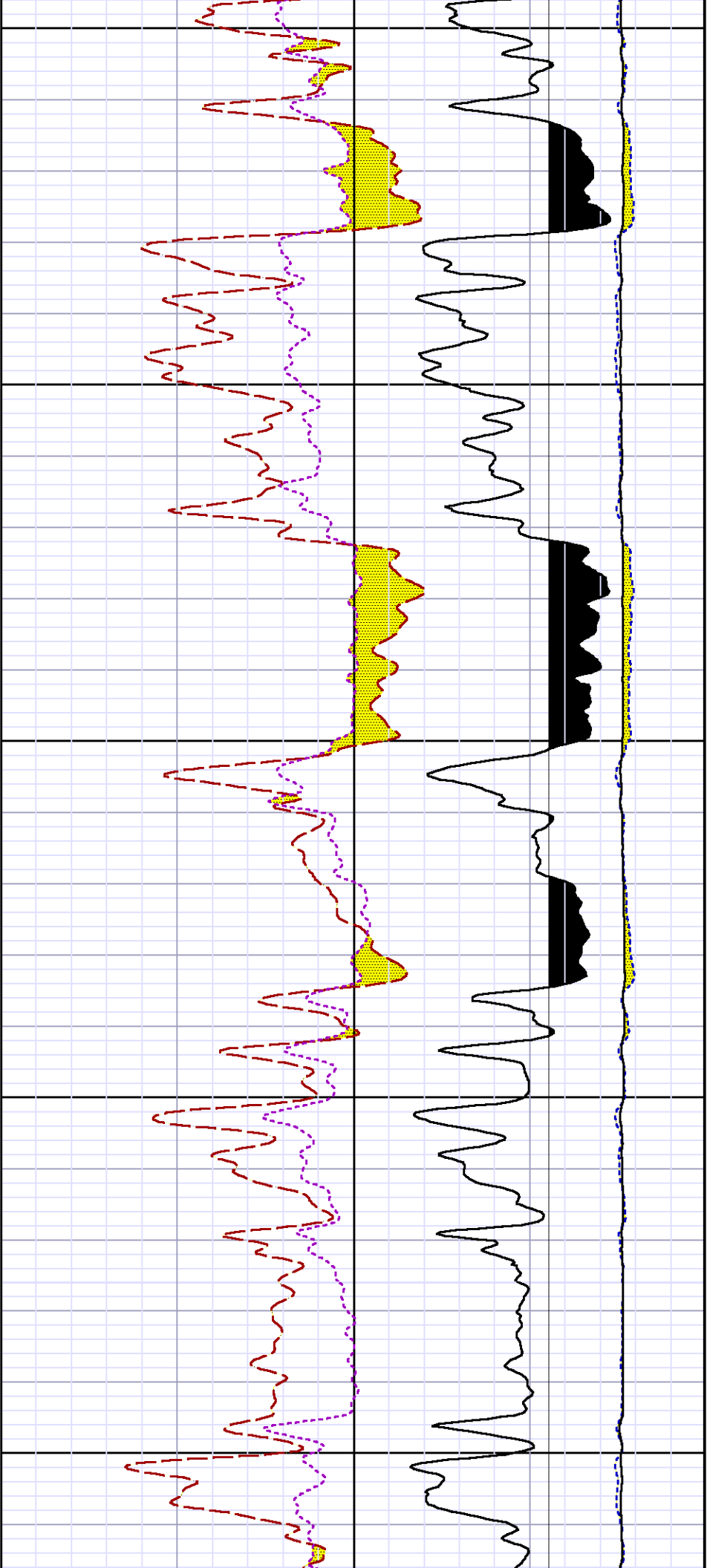


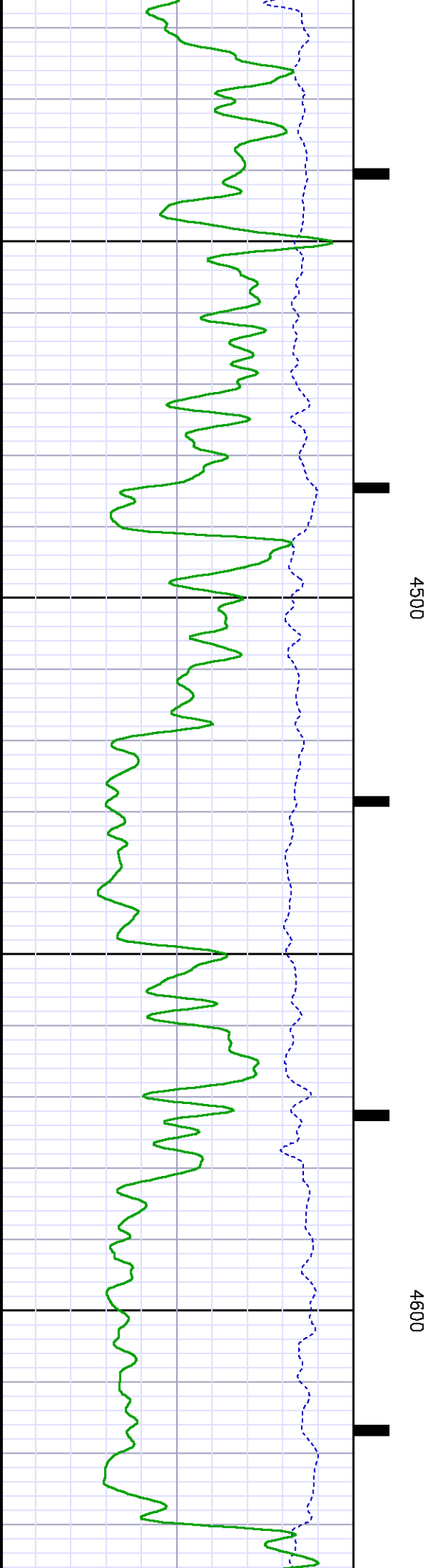
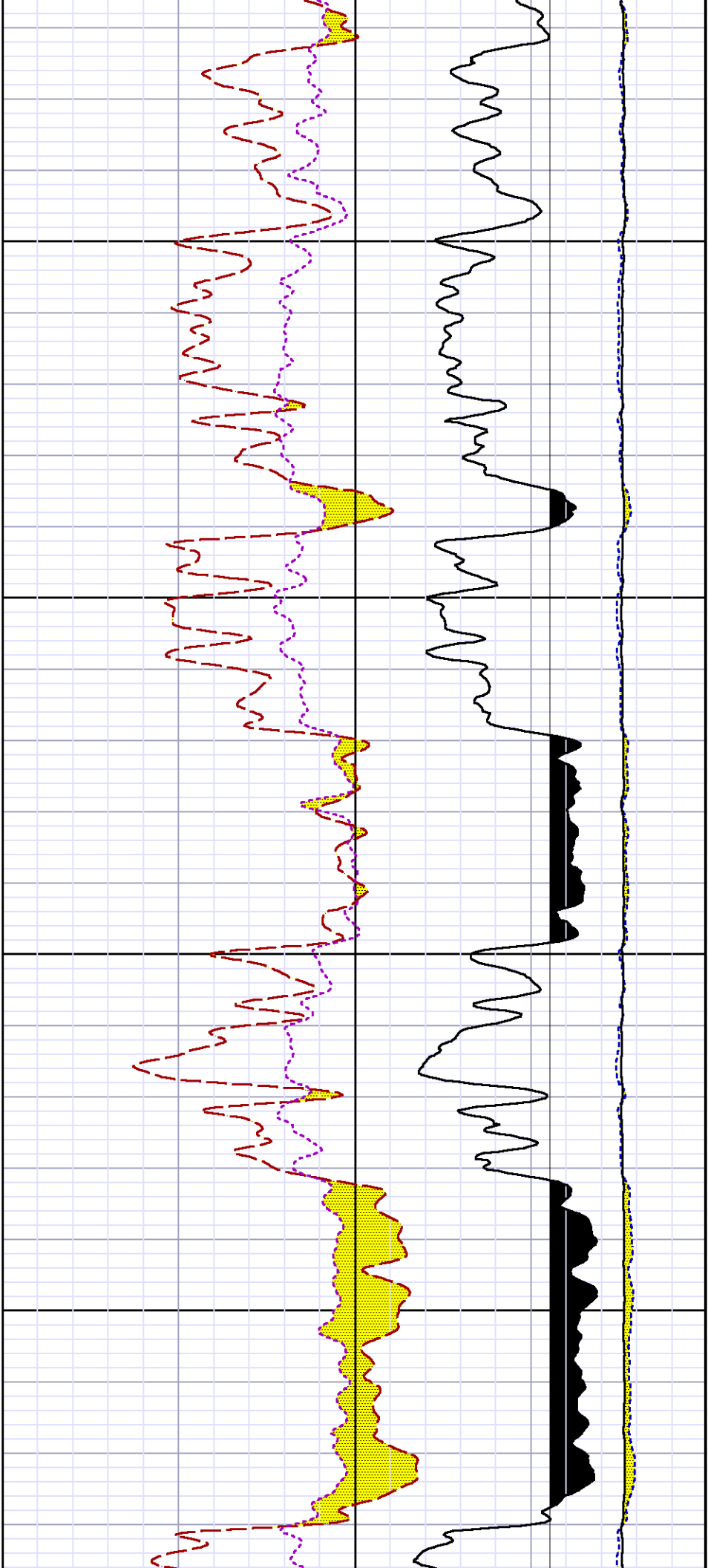


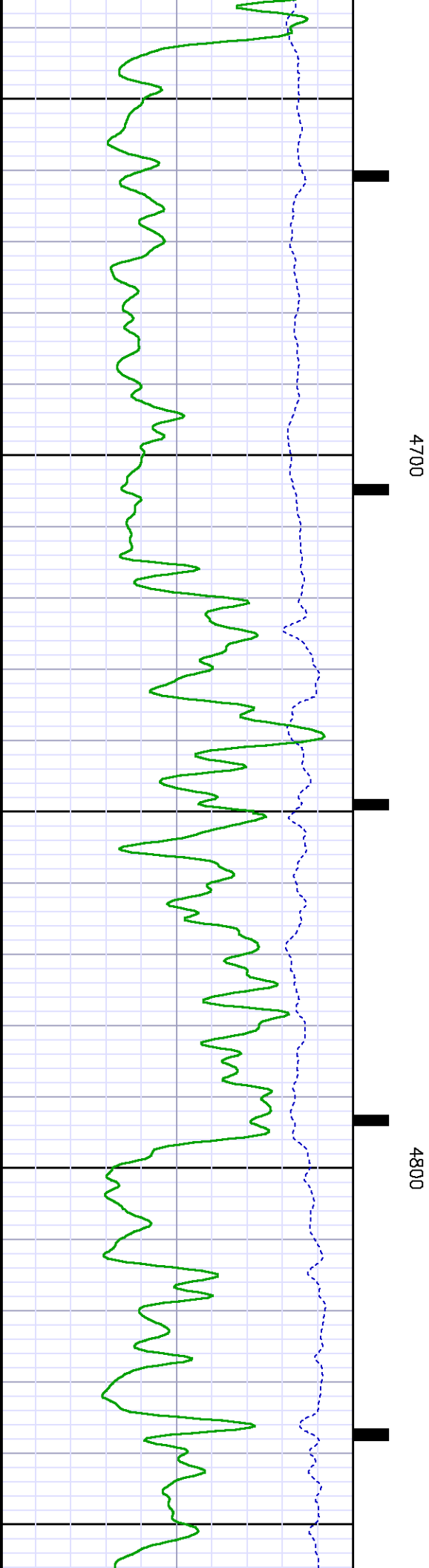
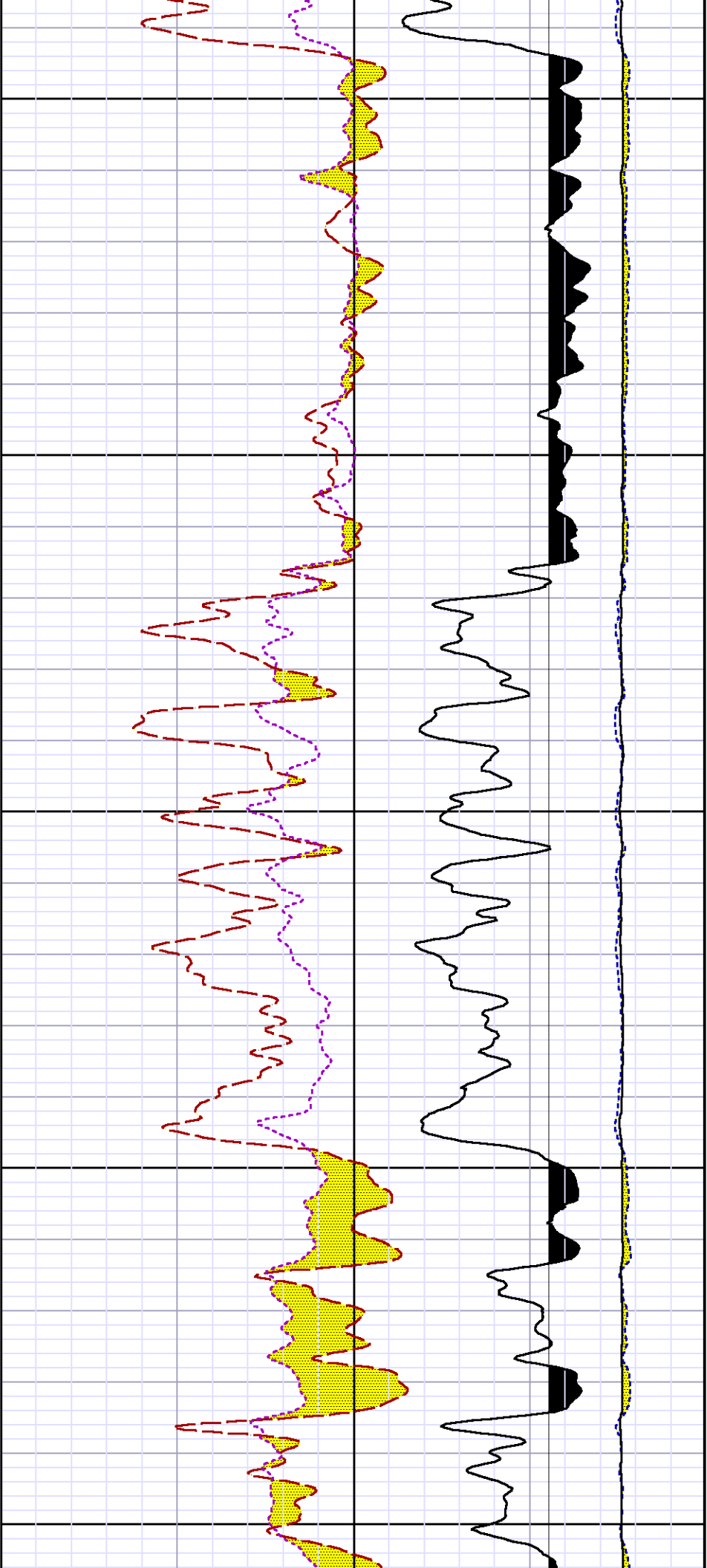


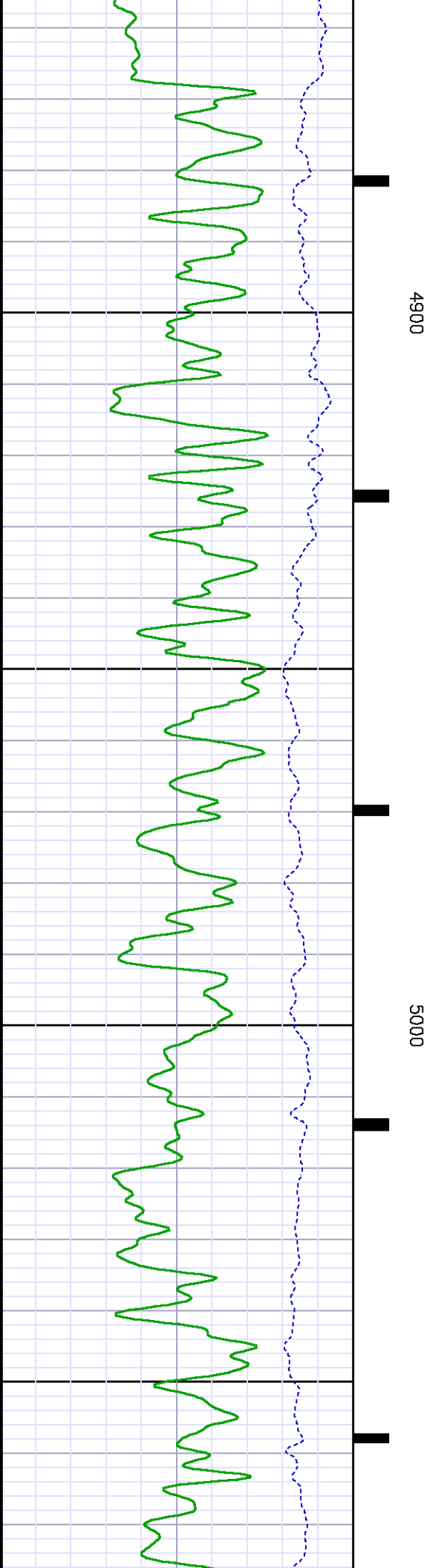
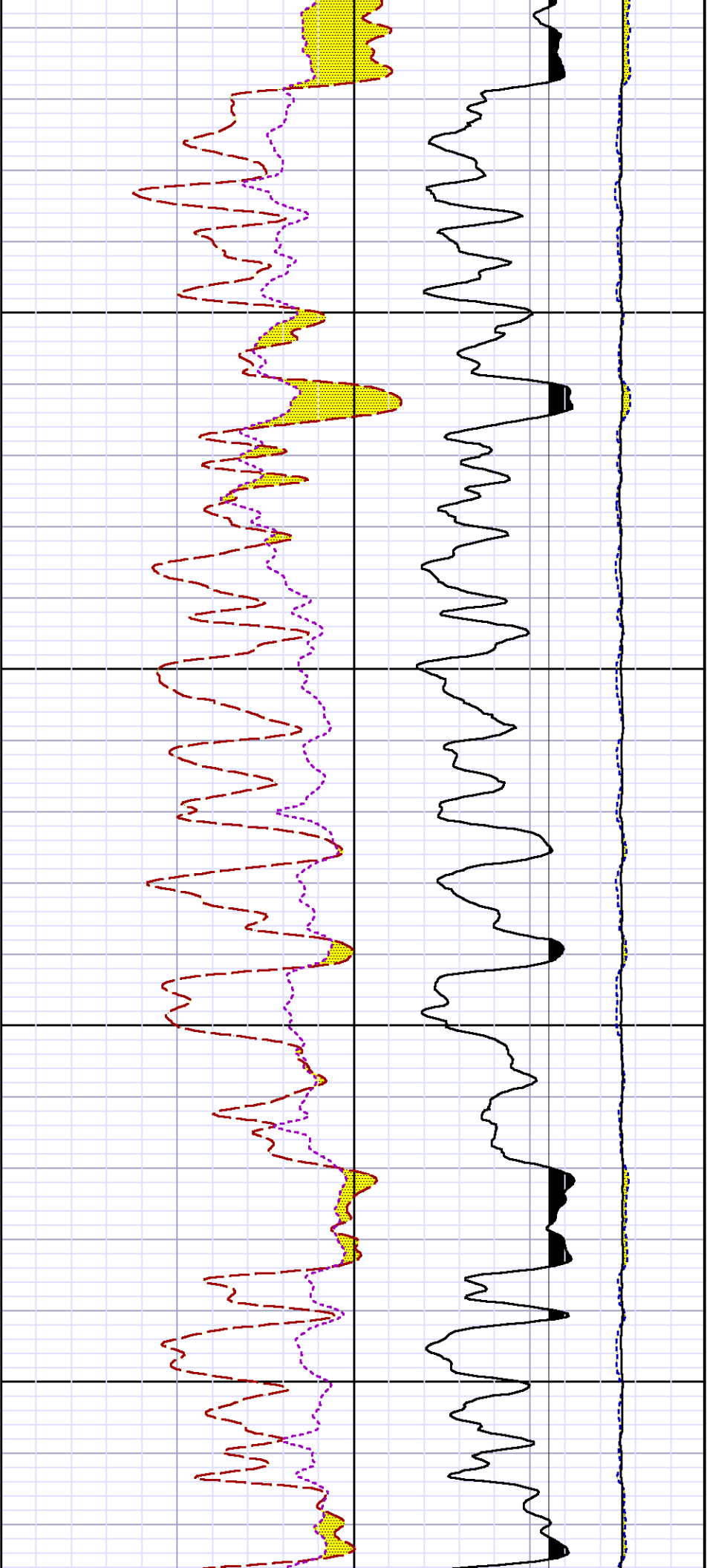


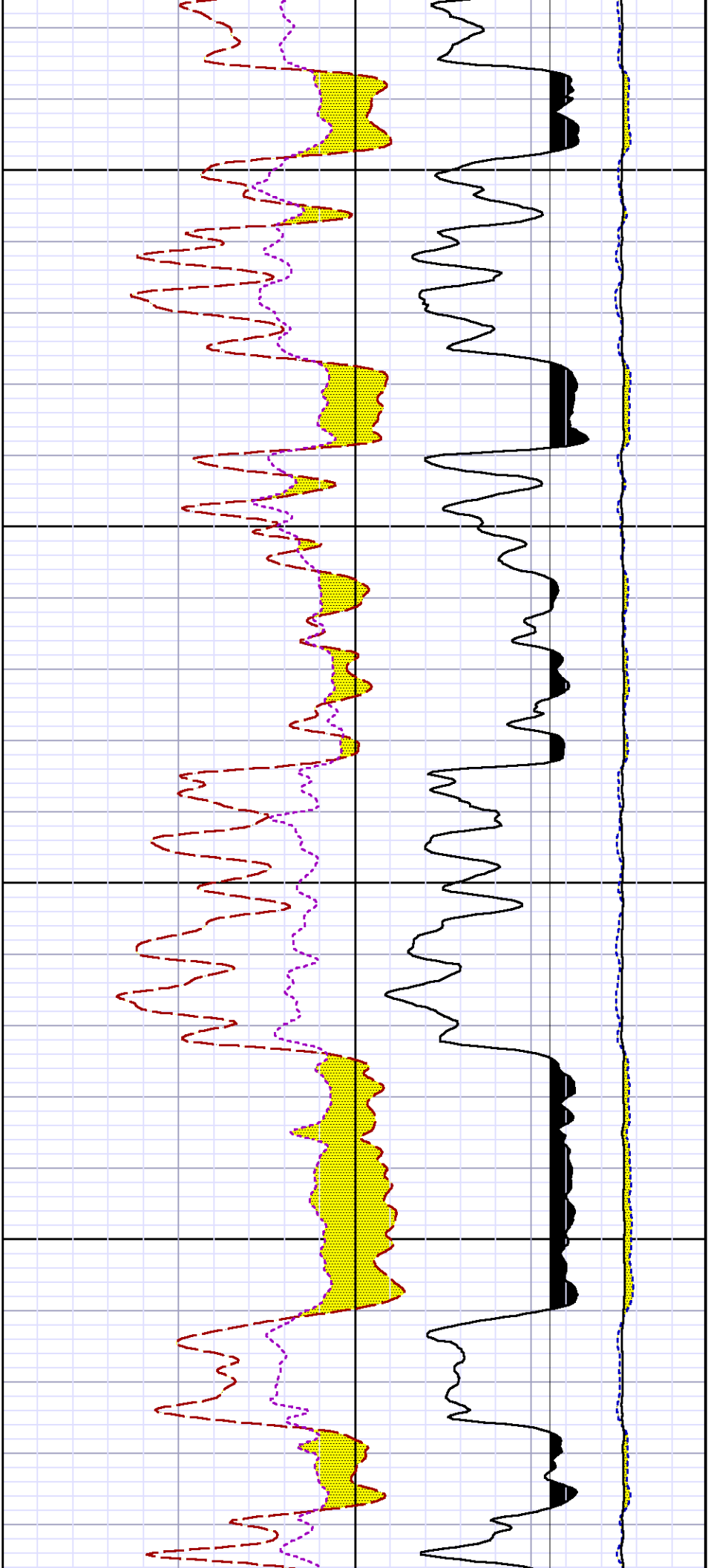






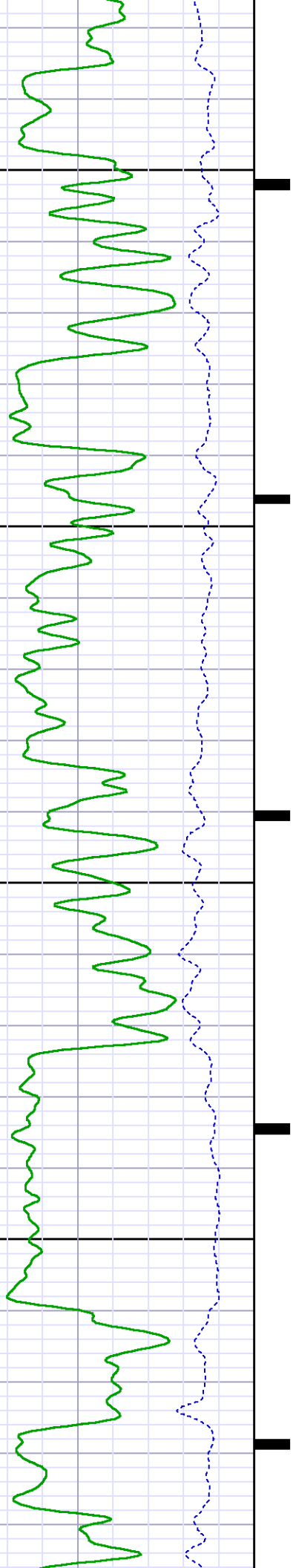


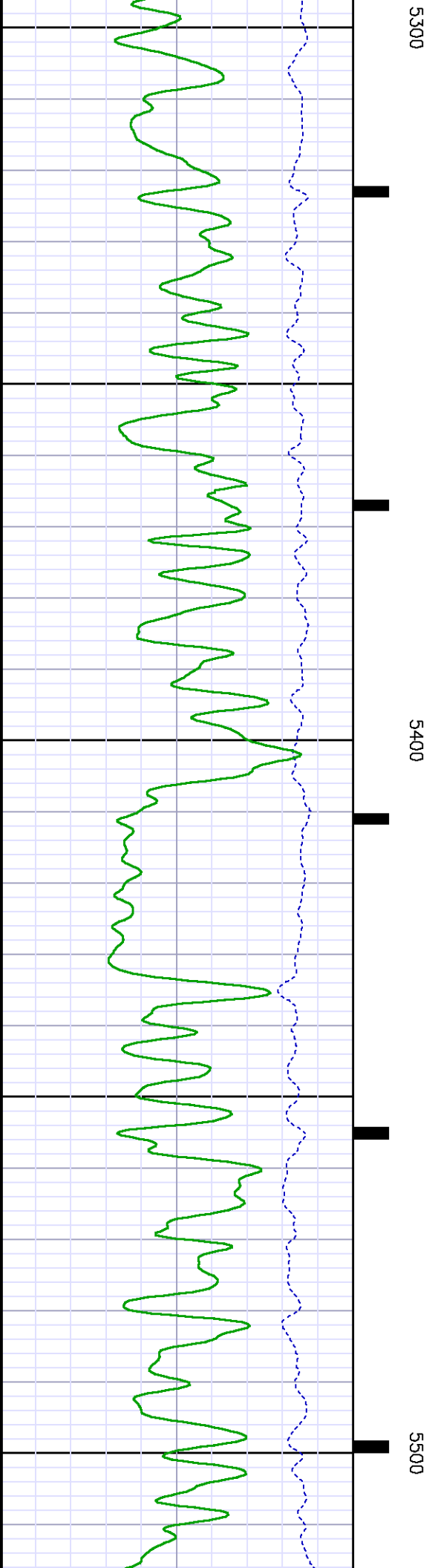
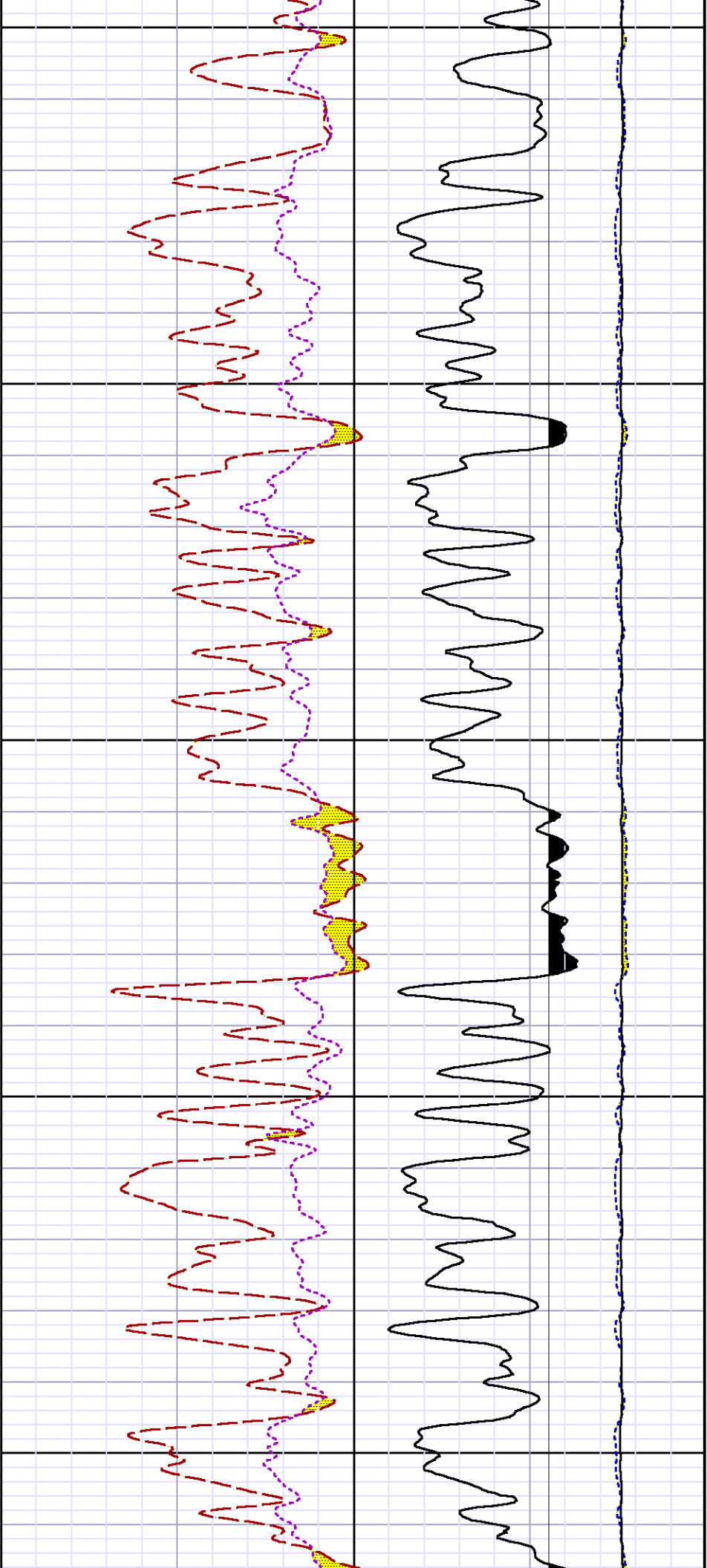


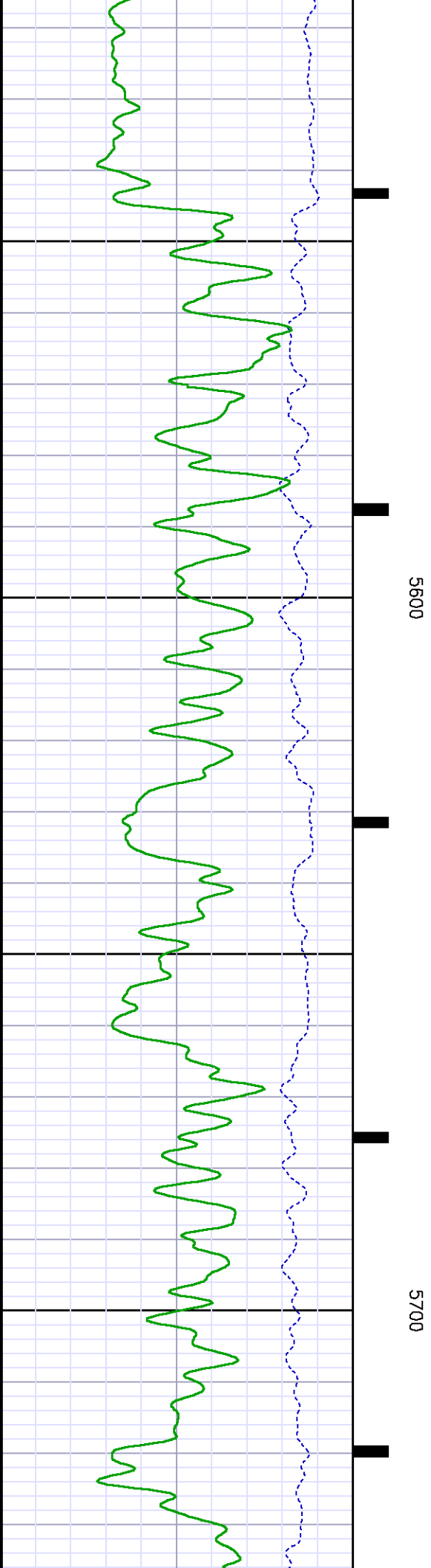
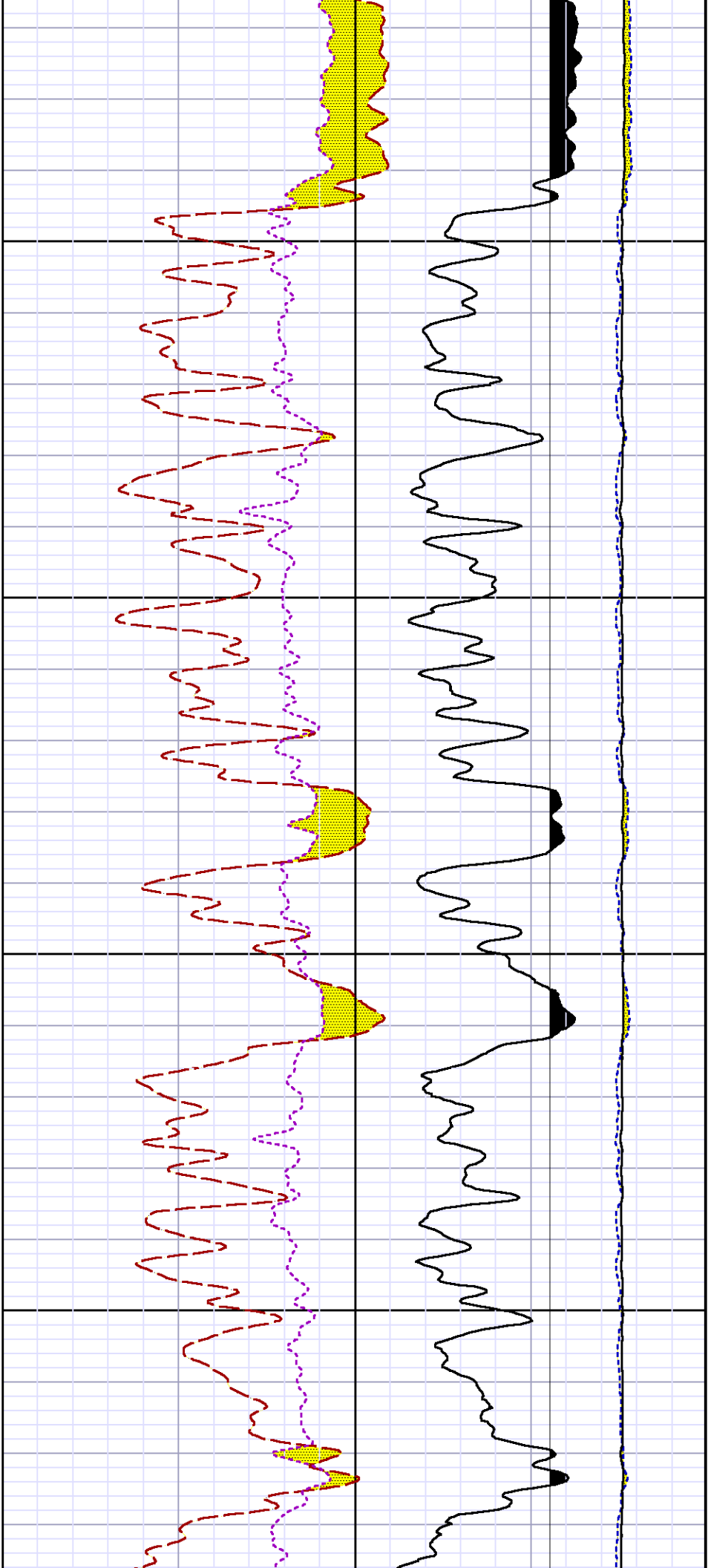


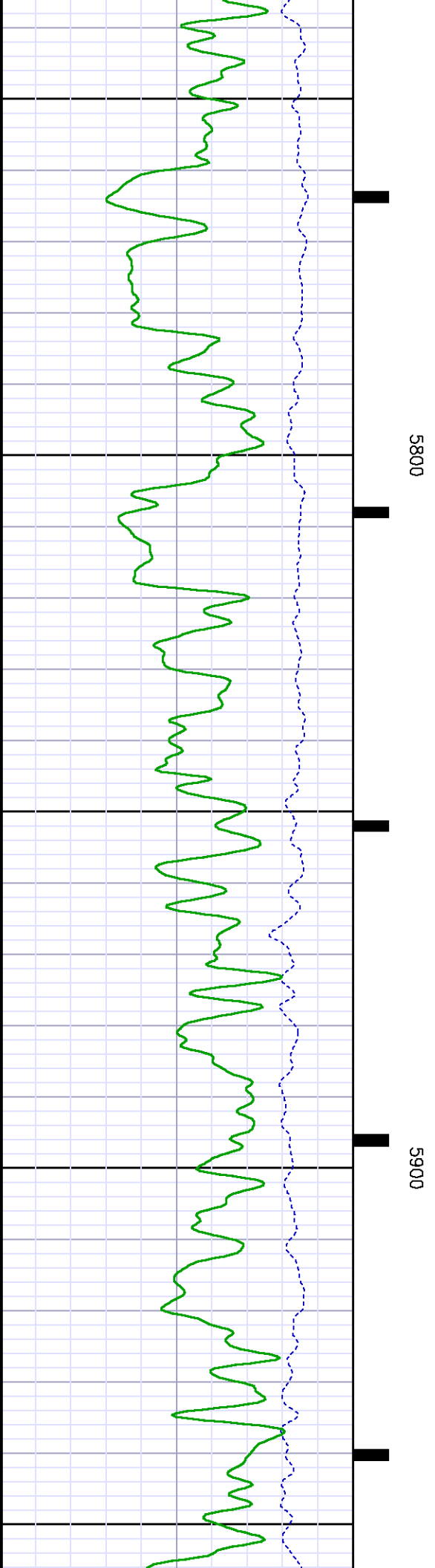
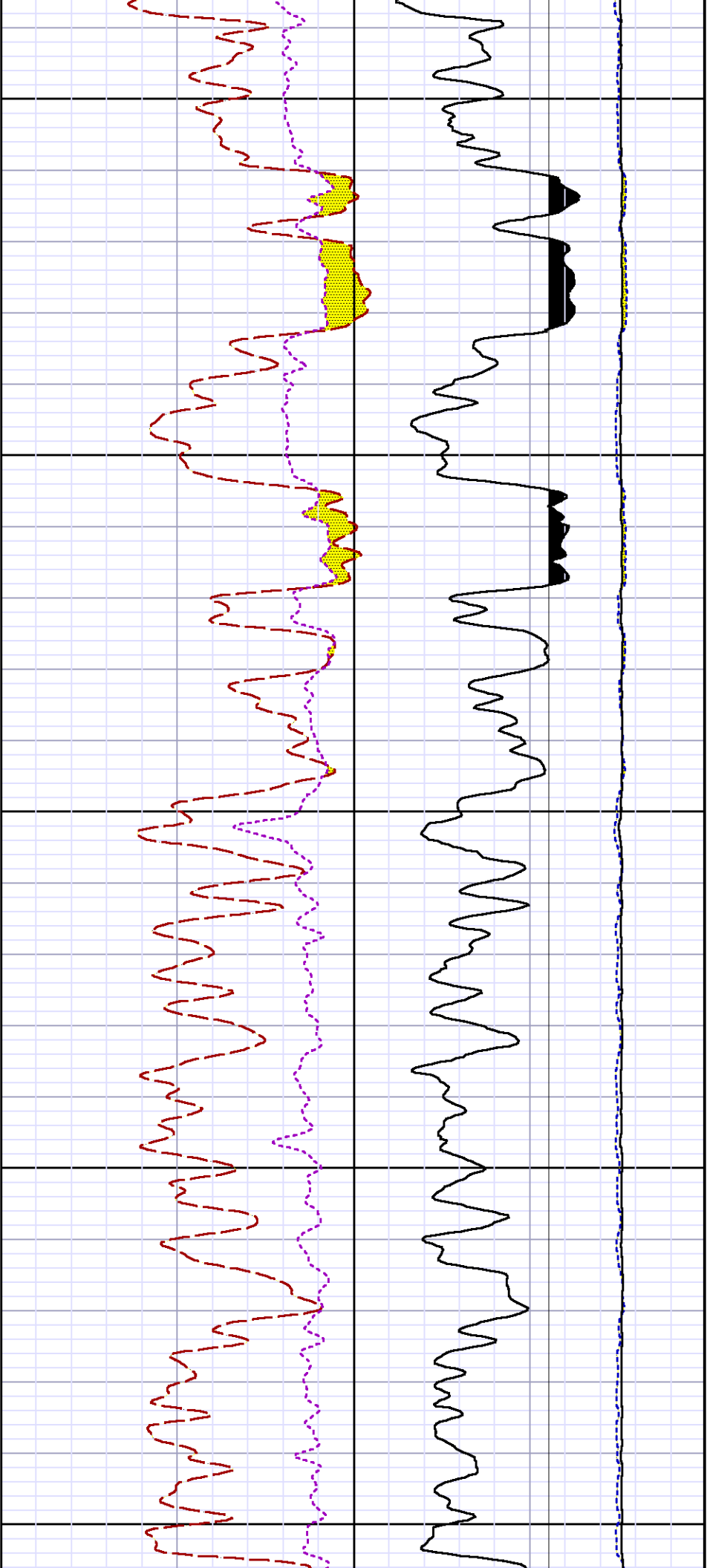
5100

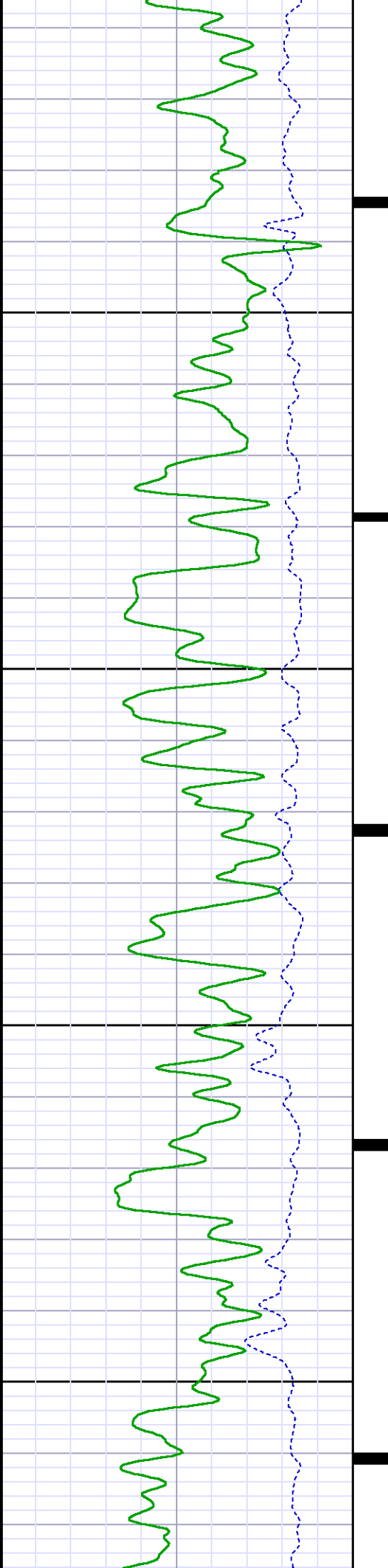
5200





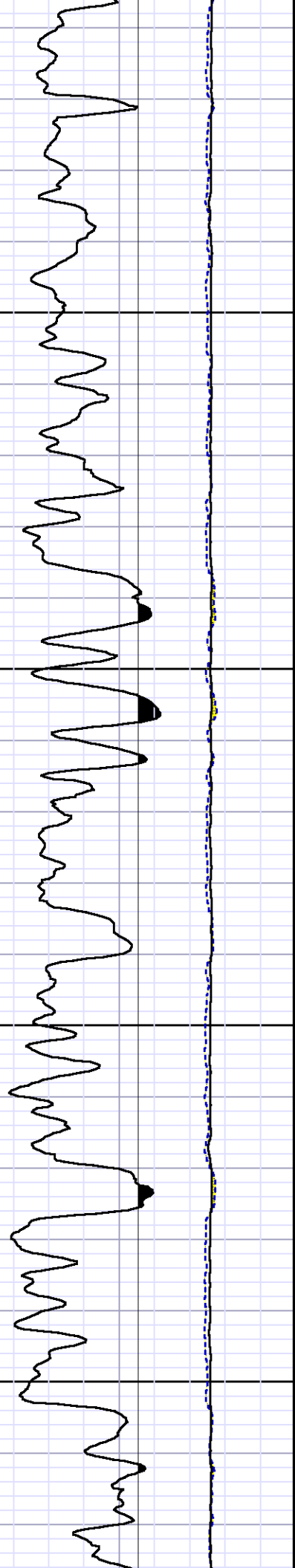
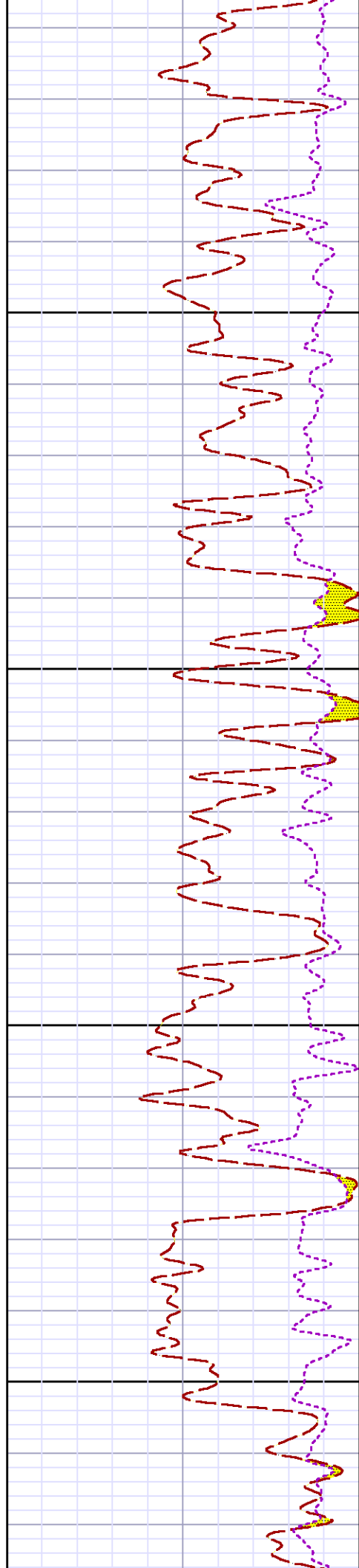


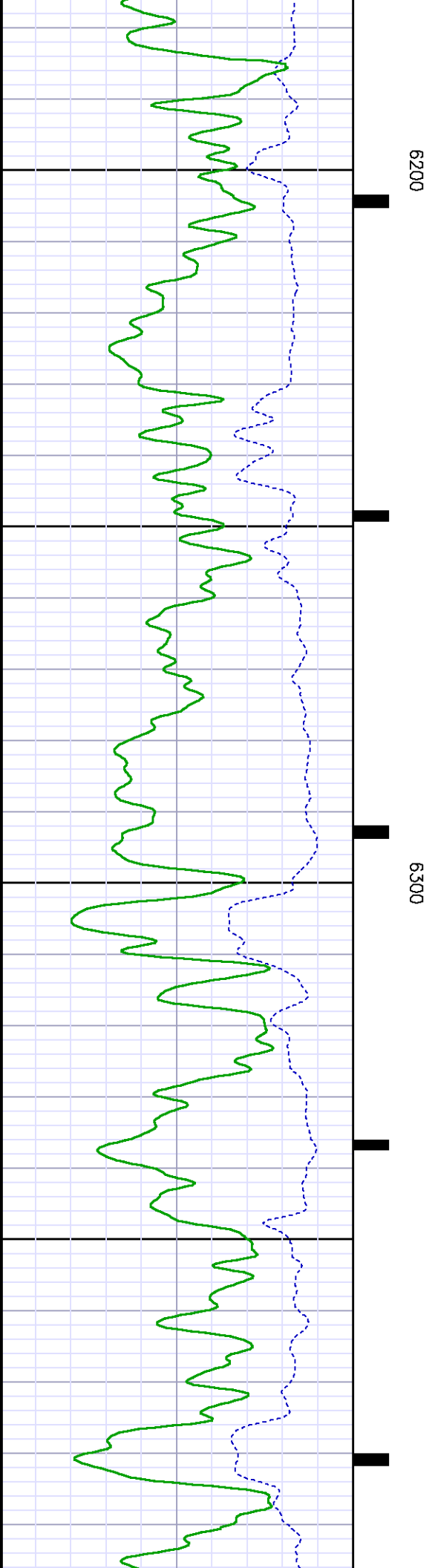
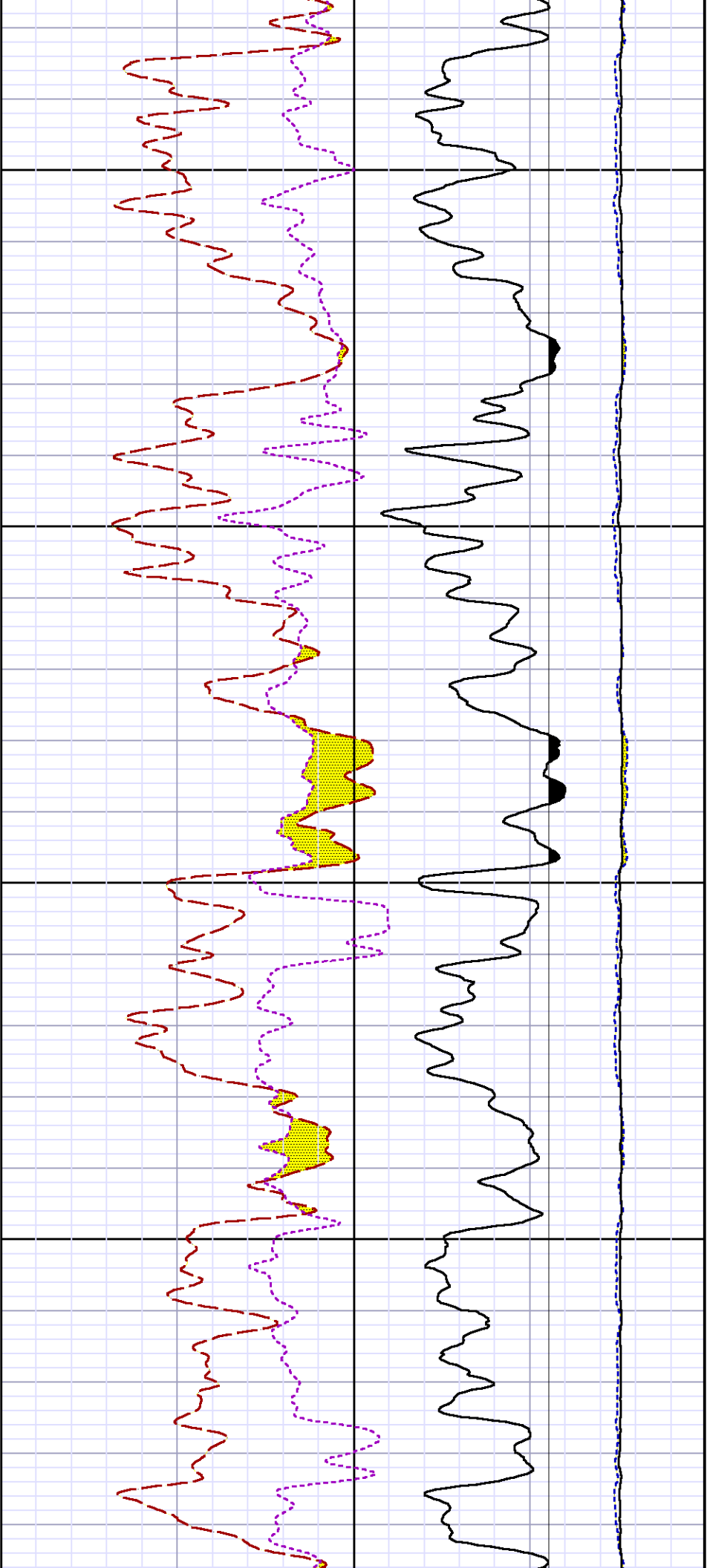


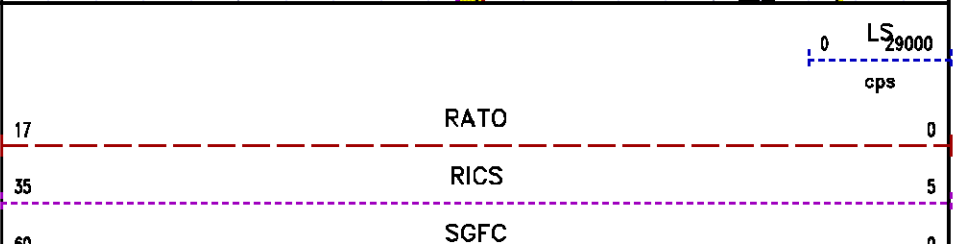
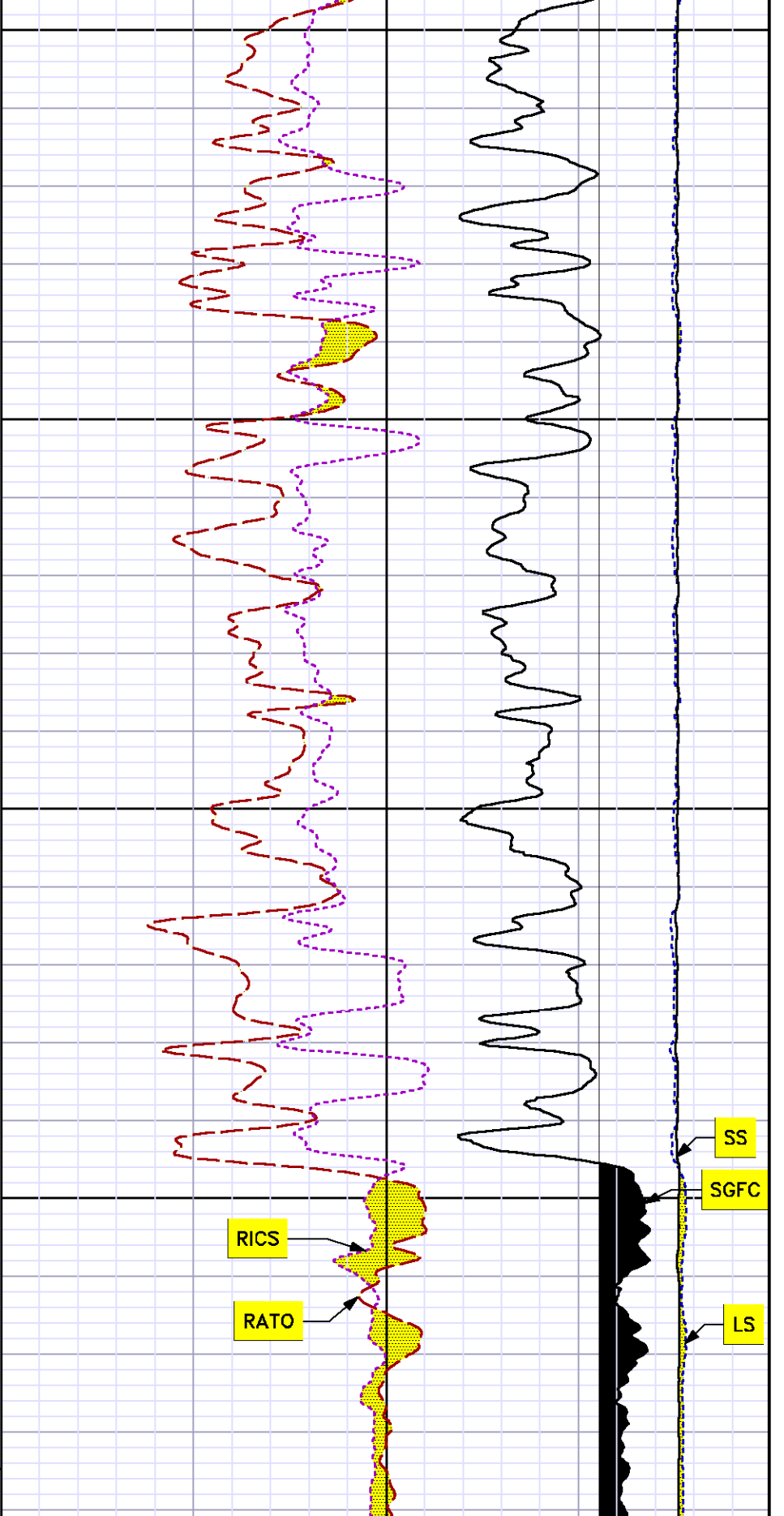
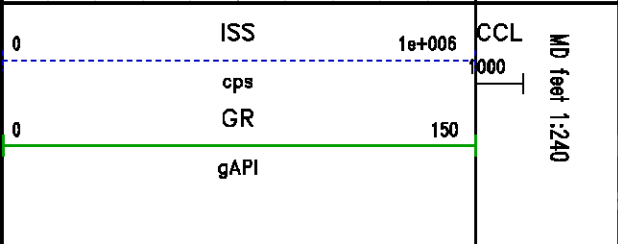
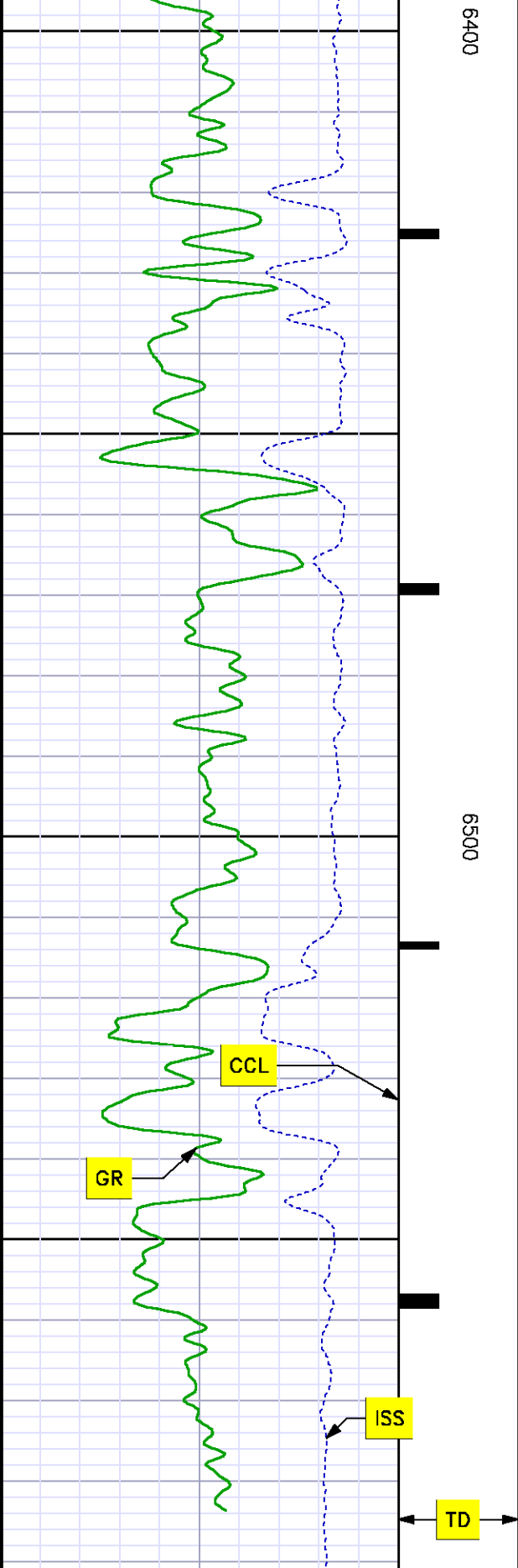


0009

6100







REPEAT SECTION
PNC 3-D MODE

SPL PROCESSING

MEASUREMENT TYPE	PARAMETER	VALUE	UNITS	TOP	BOTTOM
PNC Porosity	Borehole	Cased		5755.140	6075.640
PNC Porosity	Borehole Size	8.750	inch	5755.140	6075.640
PNC Porosity	Casing Size	4.500	inch	5755.140	6075.640
PNC Porosity	Gas Filled	Non Gas Filled		5755.140	6075.640
PNC Porosity	Matrix	Sandstone		5755.140	6075.640

DEPTH OFFSETS
(for Acquired Curves)

SERIES	DEPTH OFFSET	ACQUIRED CURVES					
8248ED	-15.320	FLTM					
8248ED	-13.320	CCL	CHV				
8262XY	-10.189	GR4					
8281XA	-0.662	HVC3Q0	SEQ3	AMA3	AML3	BKX	CXS
		CPT3Q0	CPT3Q2	CPT3Q3	CPT3Q4	ET3	IXS
		MCS3	MCS3Q0	QCAL3	RGN3	RICX	SDA3
		SDL3	SGA3	SGL3	STA3	XS	ASPEC3
		AMB3	AMF3	CHF3	IXSC	IXSN	RAT023
		RICXC	RIN13C	RIN23	RIN23C	SD3D	SG3D
		SGB3	SGF3	WDTH3	CXSR	IXSR	XSR
		RICXR					
8281XA	-0.250	HVC2Q0	SEQ2	AMA2	AMB2	AMF2	AML2
		BKL	CHF2	CLS	CPT2Q0	CPT2Q2	CPT2Q3
		CPT2Q4	ET2	ILS	LS	MCS2	MCS2Q0
		QCAL2	RGN2	RICL	RONE23	RTW023	SDA2
		SDL2	SGA2	SGB2	SGF2	SGK2	SGL2
		CPT2Q	CPT2Q2	CPT2Q3	CPT2Q4	ET2	IXS

8281XA

0.000

CLSR	ILSR	LSR	RICLR		
CPRS	HVC1Q0	MV	SEQ	SEQ1	AMA1
AMB1	AME1	AMF1	AML1	BKS	CHF1
CSS	CORB	CORF	CPT1Q0	CPT1Q2	CPT1Q2A
CPT1Q2B	CPT1Q2C	CPT1Q3	CPT1Q4	CPT1Q5	ET1
G1	G2	GE1S	GE2S	ISS	MCS1
MCS1Q0	QA1	QCAL1	QM1	RAT0	RAT013
RBOR	RGN1	RICS	RIN	RONE	RPOR
RTW0	RIN13	RONE13	RTW013	SALB	SC1
SDA1	SDL1	SGA1	SGB1	SGBC	SGE1
SGF1	SGFC	SGK1	SGL1	SS	SS2
STA1	PD1S	PD2S	PD3S	MD1S	MD2S
MD3S	DG1S	DG2S	DG3S	PD1M	PD2M
PD3M	MD1M	MD2M	MD3M	DG1M	DG2M
DG3M	MVS	MA	MM	FILV	IAM
TA	PVM	PVS	IAS	SSTAT	QPD1
QPD2	QPD3	QMD1	QMD2	QMD3	QDG1
QDG2	QDG3	QMA	QTA	QFILV	QMV
QPV	QIA	DERR	DCNT	QPK1	QSA1
PKS1	ASPEC1	HOC	FE2XC	ISSC	RINC
ISSN	RDEN	WDTH1	RICSC	CSSR	G1R
G2R	ISSR	SSR	SS2R	RATOR	RAT013R
RBORR	RICSR	RINR	RIN13R	RONER	RPORR
RTWOR					
SYSTEM	0.000	TEN	TTEN		

Created by : RPM9, v5.3.1.0

Plotted by : PlotMgr, v5.4.504

Company : WPX ENERGY

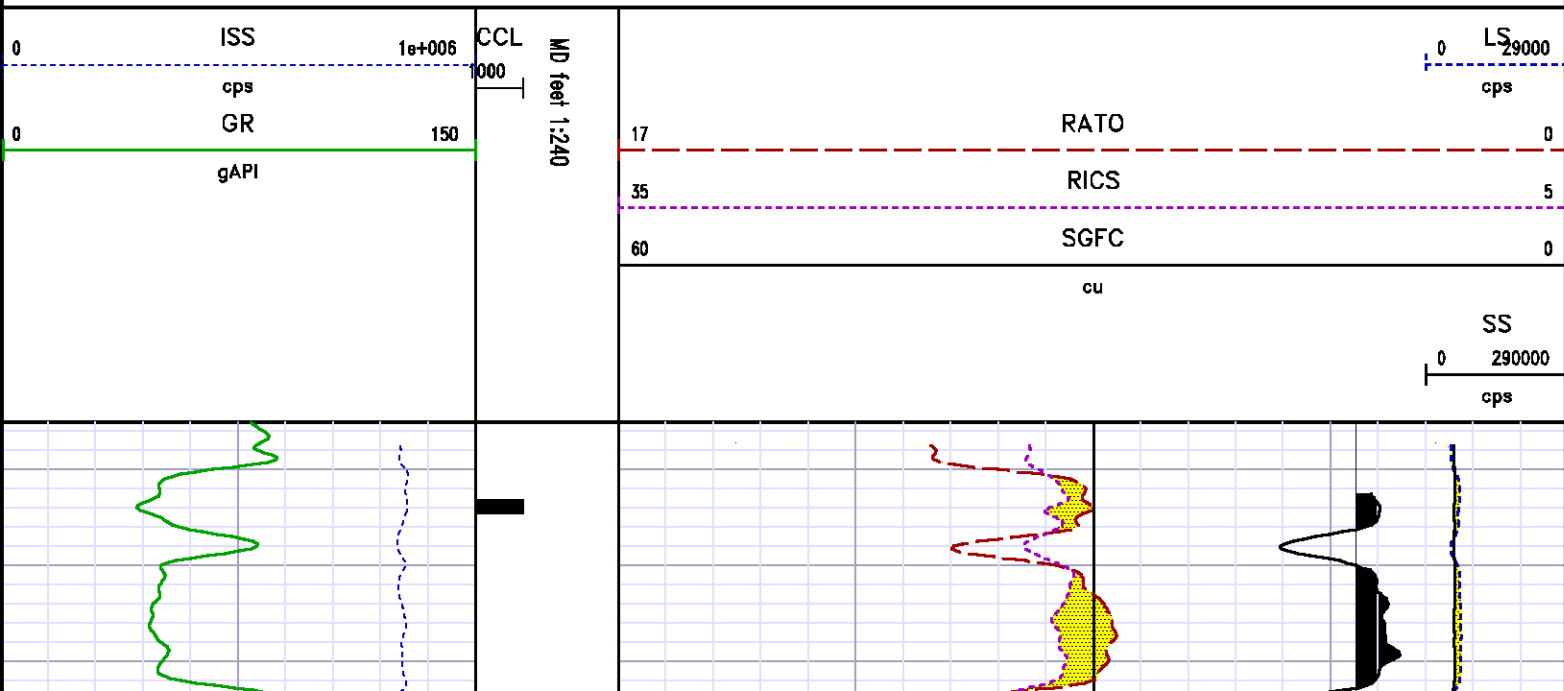
Well : WPX ENERGY GM 313-34

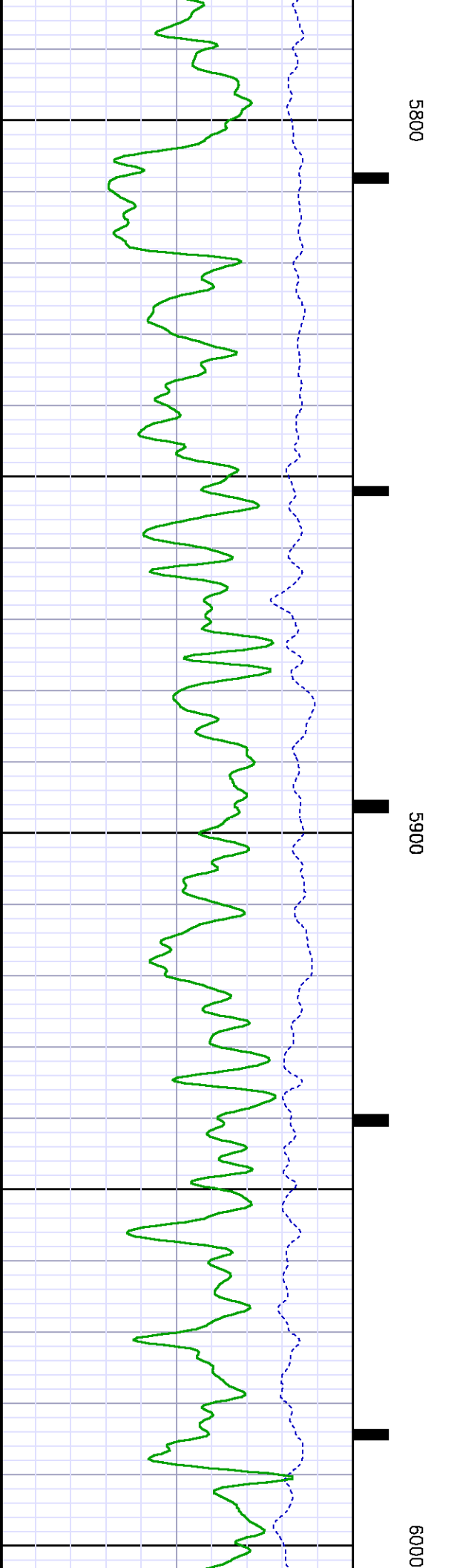
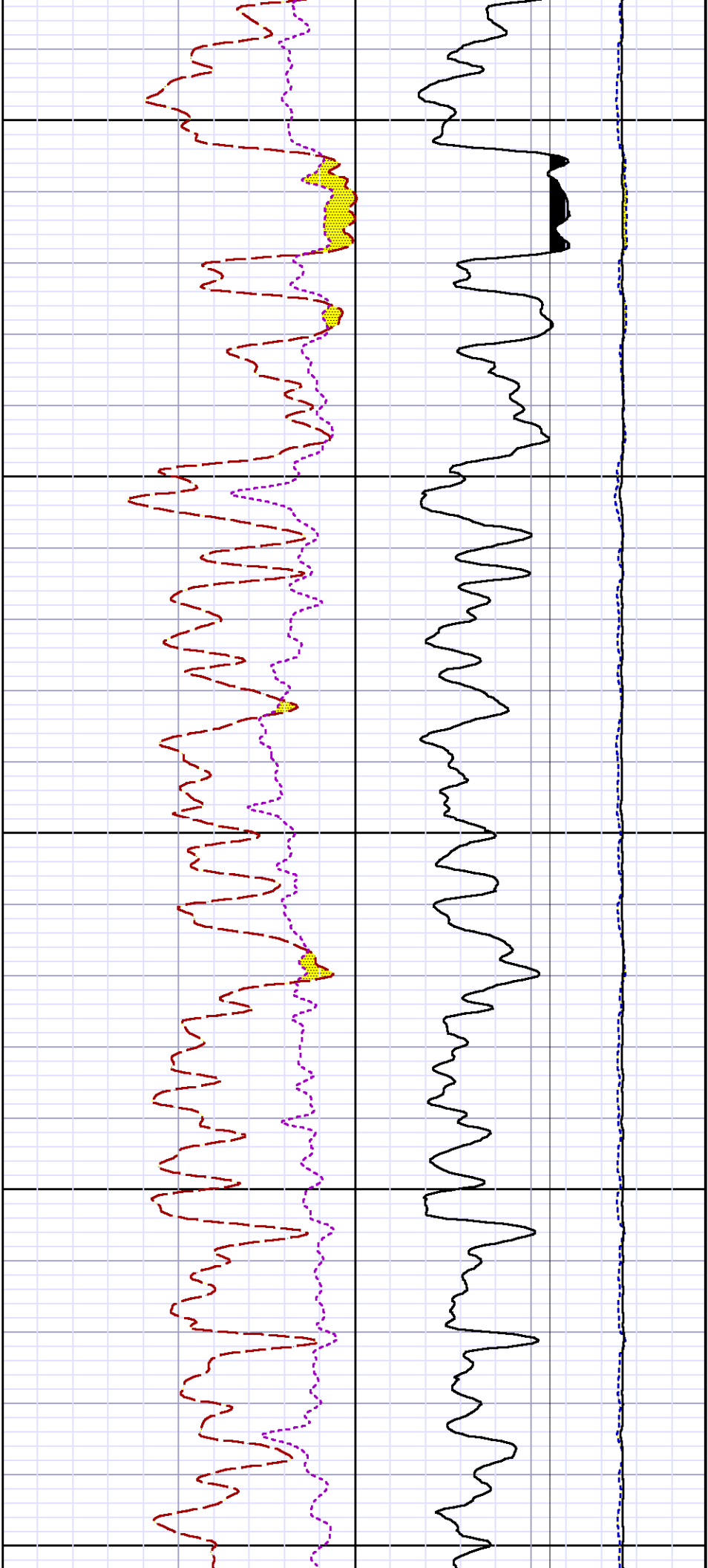
File Name : d:\welldata\wpx energy\gm 313-34\rpm313\repeat.xtf

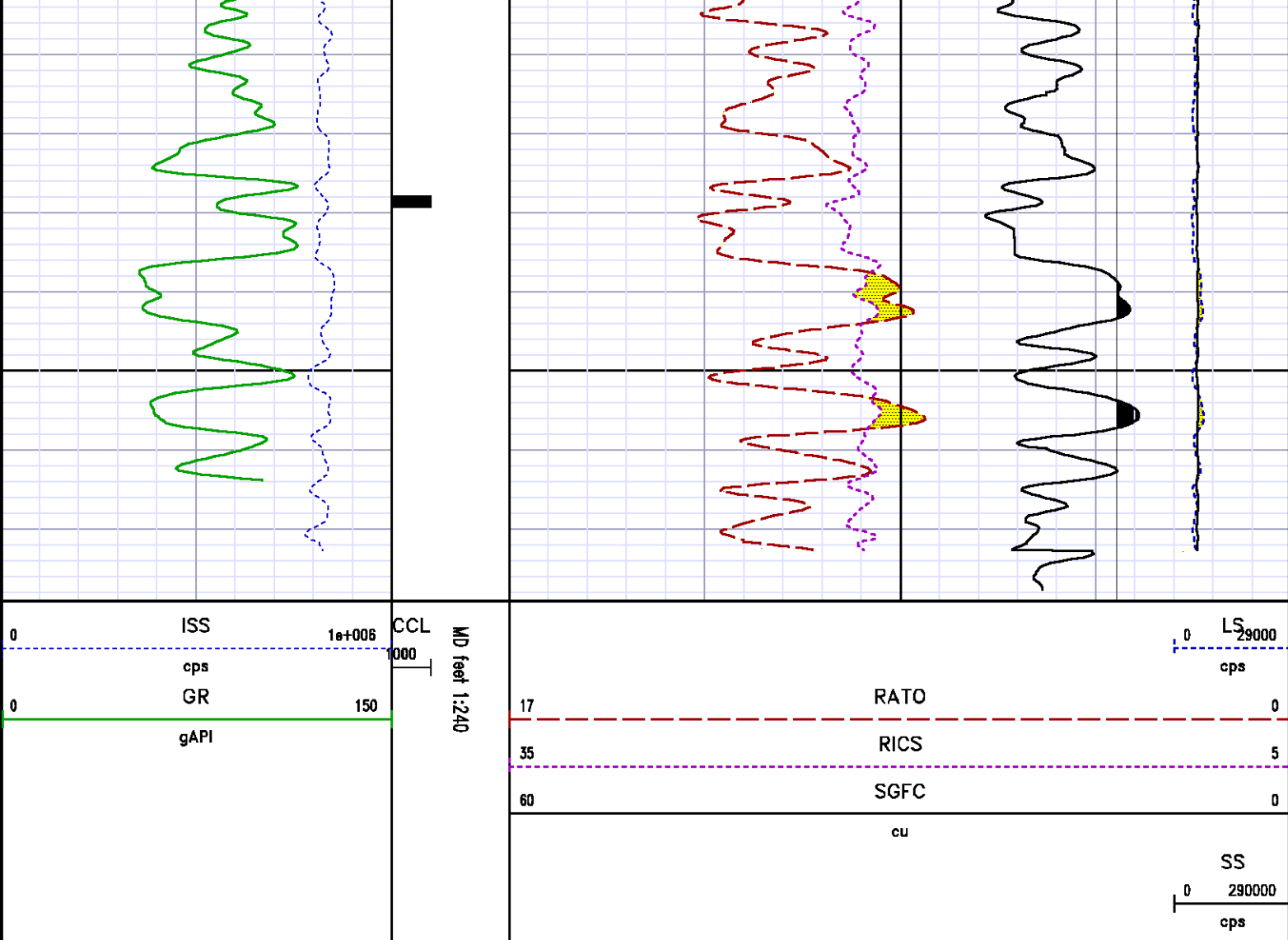
Mode : PlotMgr 5.4.504

Interval : 5755.14 - 6079.14 feet UP

Created : 8/18/2013 11:12:32 AM







CALIBRATION SUMMARY

GAMMA RAY (GR4)

Calibration File: C:\case\calver\GR\470J9.cal

CALIBRATION SUMMARY

DATE/TIME PERFORMED: Fri Jul 19 08:23:22 2013

TOOL SERIES: 8262XY ASSET: 470 SEQ: J9

Calibrator # Background Calibrator On
[cps] [cps]

Multiplicative Background Calibrator On Differential
[api] [api] [api]

S2K JIG 119.20 447.27

0.549 65.40 245.40 180.00

Verification File: C:\case\calver\GR\470J9.VP

DATE/TIME PERFORMED: Fri Jul 19 08:26:05 2013 TOOL SERIES: 8262XY ASSET: 470 SEQ: J9

Calibrator #	Background [cps]	Calibrator On [cps]	Multiplicative	Background [api]	Calibrator On [api]	Differential [api]
S2K JIG	117.27	449.96	0.549	64.34	246.88	182.54

PNC

Calibration File: C:\case\calver\PNC\555J6.cal

PNC 3D CALIBRATION SUMMARY

DATE/TIME PERFORMED: Fri Jul 26 12:55:08 2013 TOOL SERIES: 8281XA ASSET: 555 SEQ: J6

Calibrator #

Source #

shop barrel

8281AA 11765054

	ISS	Mtr Vltz (V)	SS Gain	LS Gain	XLS Gain	EA Temp (degF)	Sync Delay (usec)	RCAL
Raw Data	817093	121.00	2316.00	2261.00	2222.00	111.81	7.00	0.9843
Interpolated	1300000	139.01	2298.19	2258.70	2216.67			

	ISS	BKS	BKL	BKX	SGA1	SDA1	SGA2	SDA2
Raw Data	817093	6192.69	983.08	141.84	25.77	0.14	24.27	0.28
					25.35 26.40	0.00 0.20	23.60 24.80	0.00 0.40

	ISS	ILS	IXS	SS	SS2	LS	CSS	CLS
Raw Data	817093	171203.97	26411.91	88977.66	31679.46	8262.92	53839.95	13229.47
Fit Quality %		0.24	0.41	0.56	0.56	0.17	0.55	0.22

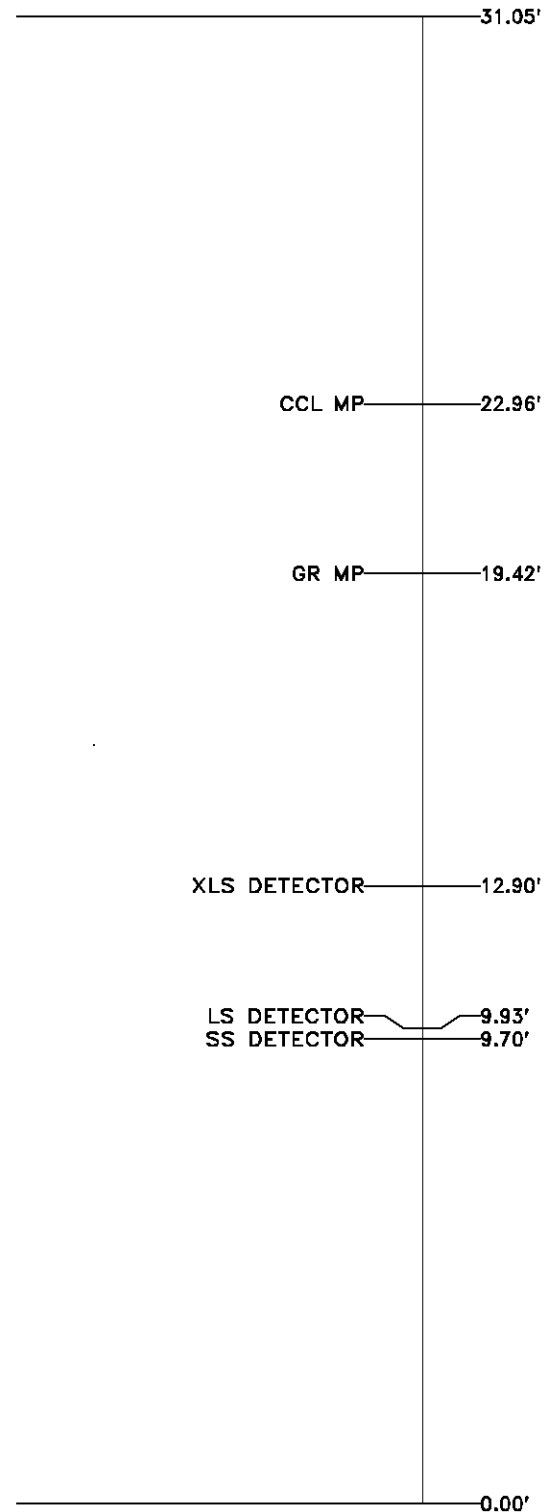
	ISS	RBOR	RIN ISS/ILS	RIN13 ISS/IXS	RICS ISS/CSS	RATO SS/LS	RTWO SS2/LS	RONE CSS/CLS
Raw Data	817093	1.44	4.77	30.94	15.18	10.77	3.83	4.07
		1.42 1.45	3.55 5.52	22.20 32.70	10.99 16.34	10.06 11.10	3.57 3.95	3.76 4.22
Fit Quality %		0.08	0.28	0.17	0.09	0.28	0.28	0.23
Reduced	1382706	1.43	4.78	31.03	15.23	10.73	3.82	4.06
		1.42 1.45	4.33 5.52	27.60 32.70	13.70 16.34	10.06 11.10	3.57 3.95	3.76 4.22

TOOL DIAGRAM

TOOL DIAGRAM

OTA SHORT CABLE HEAD	
PCM POWER SUPPLY	
Series	8250EA
Mnemonic	PCM
Diameter	1.70"
Weight	18.00 lb
Length	3.86'
Temp Rating	350.00 °F
TELEMETRY / CCL	
Series	8248EA
Mnemonic	PCM
Diameter	1.70"
Weight	20.00 lb
Length	4.46'
Measure Point	1.00' CCL MP
Temp Rating	350.00 °F
Press Rating	15000.00 PSI
GAMMA RAY	
Series	8262XA
Mnemonic	GR
Diameter	1.70"
Weight	15.00 lb
Length	3.17'

RESERVOIR PERFORMANCE MONITOR	
Series	8281XA
Mnemonic	RPM
Diameter	1.70"
Weight	75.00 lb
Length	18.58'
Measure Point	9.49' SS DETECTOR
Measure Point	9.72' LS DETECTOR
Measure Point	12.69' XLS DETECTOR
Temp Rating	350.00 °F
Press Rating	20000.00 PSI



Total Length: 31.05'
 Total Weight: Not Available
 Max Diameter: 0' 1.70"

Baker Atlas

CASE

Field	GRAND VALLEY		API No:
County	GARFIELD	State	COLORADO
Location		Elevations	
SHL: 1982' FSL X 2153' FWL		KB 5381.5 ft	34-8S-96W
BHL: 1681' FSL X 848' FWL (NWSW)		DF	GM 23-34 PAD
		GL 5355.5 ft	NABORS 574
SEC	34	TWP	6S
		RGE	96W