



Baker Atlas

RESERVOIR PERFORMANCE MONITOR

File No:	Company	WPX ENERGY
CH075720	Well	WPX ENERGY GM 424-34
API No:	Field	GRAND VALLEY
05045193080000	County	GARFIELD
	State	COLORADO
Location		Other Services
34-65-96W GM 23-34 PAD NABORS 574		BOND LOG
SHL: 1960' FSL X 2167' FWL BHL: 647' FSL X 1488' FWL (SESW)		
SEC 34 TWP 6S RGE 96		
Permanent Datum	GL	Elevation
Log Measured From	KB	26 ft
Drill Measured From	KELLY BUSHING	Above P. D.
		Elevations
		KB 5355.5 ft
		DF
		GL 5355.5 ft

Date	17/AUG/13
Run	ONE
Service Order	624402
Depth Driller	6652 ft
Depth Logger	6616 ft
Bottom Logged Interval	6606 ft
Top Logged Interval	5361 ft
Time Started	1030
Time Finished	1430
Operator Rig Time	4 HRS
Type of Fluid in Hole	WATER
Fluid Density	NA
Salinity	NA
Fluid Level	61 ft
Logged Cement Top	NA
Wellhead Pressure	0 psi
Maximum Hole Deviation	NA
Nominal Logging Speed	10 fpm
Maximum Recorded Temperature	212 degF
Reference Log	BAKER HUGHES BOND LOG
Reference Log Date	17/AUG/15
Equipment No.	4271
Location	GRAND JCT
Recorded By	FLOYD RENEAU
Witnessed By	LEWIS CARTER

- FOLD HERE

In making interpretations of logs, our employees will give the customer the benefit of their best judgement. But since all interpretations are opinions based on inferences from electrical or other measurements, we cannot, and we do not guarantee the accuracy or correctness of any interpretation. We shall not be liable or responsible for any loss, cost, damages, or expenses whatsoever incurred or sustained by the customer resulting from any interpretation made by any of our employees.

Borehole Record		
Bit Size	From	To
13.5 in	0 ft	918 ft
8.75 in	918 ft	6652 ft

Casing Record				
Size	Weight	Grade	From	To
9.625 in			0 ft	918 ft
4.5 in	11.6 lbm/ft	1-80	0 ft	6652 ft

Remarks
All data on this log is shifted and depth matched using the Gamma Ray curve to the Baker Hughes bond log dated 9/17/2013 at the client's request
The amount of linear shift is 12 feet.
Logged in PNC-3D mode.
BHT = 212°F
SJ = 3480'--3504'

Equipment Data					
Run	Trip	Tool	Series Number	Serial Number	Position
1	1	RPM	8281FA	10307727	FREE
1	1	RPM	8281PA	10585555	FREE
1	1	RPM	8281EA	10303640	FREE
1	1	GR	8282XY	10485470	FREE
1	1	TEL/CCL	8248ED	10296408	FREE
1	1	PCM	8250EA	10397894	FREE
0	0				

MAIN SECTION PNC 3-D MODE

SPL PROCESSING					
MEASUREMENT TYPE	PARAMETER	VALUE	UNITS	TOP	BOTTOM
PNC Porosity	Borehole	Cased		3349.750	6630.000
PNC Porosity	Borehole Size	7.750	inch	3349.750	6630.000
PNC Porosity	Casing Size	4.500	inch	3349.750	6630.000
PNC Porosity	Gas Filled	Non Gas Filled		3349.750	6630.000
PNC Porosity	Matrix	Sandstone		3349.750	6630.000

DEPTH OFFSETS							
(for Acquired Curves)							
SERIES	DEPTH OFFSET	ACQUIRED CURVES					
8248ED	-15.320	FLTM					
8248ED	-13.320	CCL	CHV				
8262XY	-10.189	GR4					
8281XA	-0.662	HVC3Q0	SEQ3	AMA3	AML3	BKX	CXS
		CPT3Q0	CPT3Q2	CPT3Q3	CPT3Q4	ET3	IXS
		MCS3	MCS3Q0	QCAL3	RGN3	RICX	SDA3
		SDL3	SGA3	SGL3	STA3	XS	ASPEC3
		WV3	WV7	WV7	WV9	WV9	DAT007

8281XA

-0.250

AMB3	AMF3	CHF3	IXSC	IXSN	RAT023
RICXC	RIN13C	RIN23	RIN23C	SD3D	SG3D
SGB3	SGF3	WDTH3	CXSR	IXSR	XSR
RICXR					
HVC2Q0	SEQ2	AMA2	AMB2	AMF2	AML2
BKL	CHF2	CLS	CPT2Q0	CPT2Q2	CPT2Q3
CPT2Q4	ET2	ILS	LS	MCS2	MCS2Q0
QCAL2	RGN2	RICL	RONE23	RTW023	SDA2
SDL2	SGA2	SGB2	SGF2	SGK2	SGL2
STA2	ASPEC2	ILSC	ILSN	WDTH2	RICLC

8281XA

0.000

CPRS	HVC1Q0	MV	SEQ	SEQ1	AMA1
AMB1	AME1	AMF1	AML1	BKS	CHF1
CSS	CORB	CORF	CPT1Q0	CPT1Q2	CPT1Q2A
CPT1Q2B	CPT1Q2C	CPT1Q3	CPT1Q4	CPT1Q5	ET1
G1	G2	GE1S	GE2S	ISS	MCS1
MCS1Q0	QA1	QCAL1	QM1	RAT0	RAT013
RBOR	RGN1	RICS	RIN	RONE	RPOR
RTW0	RIN13	RONE13	RTW013	SALB	SC1
SDA1	SDL1	SGA1	SGB1	SGBC	SGE1
SGF1	SGFC	SGK1	SGL1	SS	SS2
STA1	PD1S	PD2S	PD3S	MD1S	MD2S
MD3S	DG1S	DG2S	DG3S	PD1M	PD2M
PD3M	MD1M	MD2M	MD3M	DG1M	DG2M
DG3M	MVS	MA	MVM	FILV	IAM
TA	PVM	PVS	IAS	SSTAT	QPD1
QPD2	QPD3	QMD1	QMD2	QMD3	QDG1
QDG2	QDG3	QMA	QTA	QFILV	QMV
QPV	QIA	DERR	DCNT	QPK1	QSA1
PKS1	ASPEC1	HOC	FE2XC	ISSC	RINC
ISSN	RDEN	WDTH1	RICSC	CSSR	G1R
G2R	ISSR	SSR	SS2R	RATOR	RAT013R
RBORR	RICSR	RINR	RIN13R	RONER	RPORR

SYSTEM

0.000

TEN TTEN

Created by : RPM9, v5.3.1.0

Plotted by : PlotMgr, v5.4.504

Company : WPX ENERGY

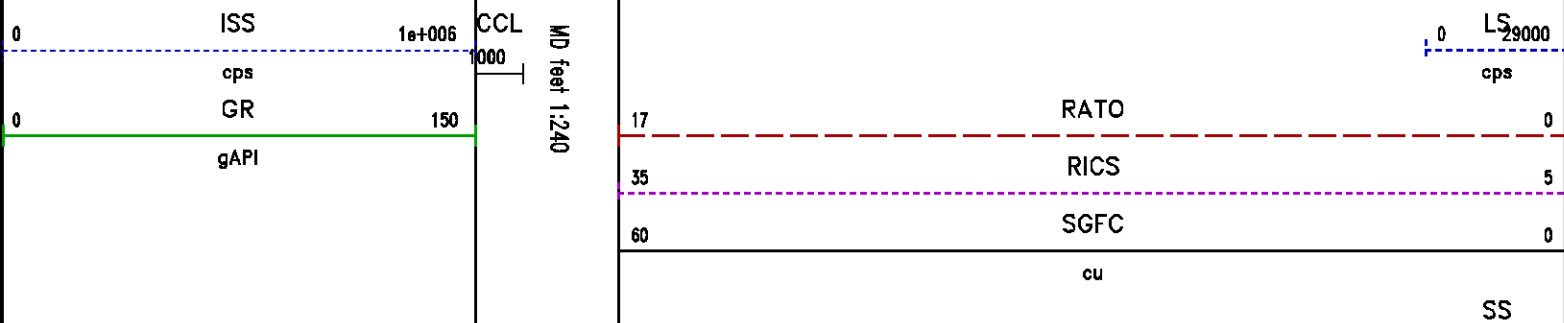
Well : WPX ENERGY GM 424-34

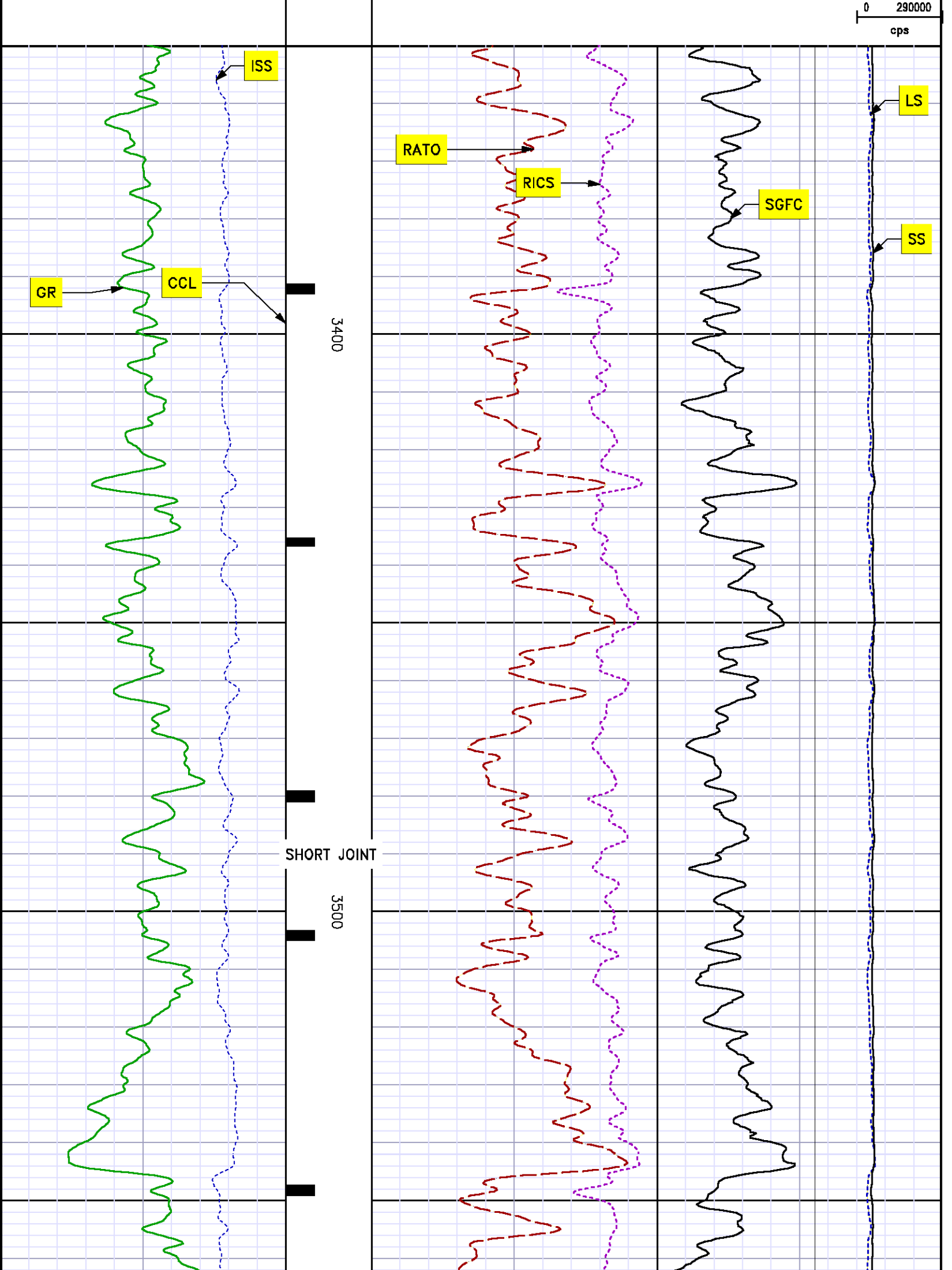
File Name : d:\welldata\wpx energy\gm 424-34\rp424\main.xtf

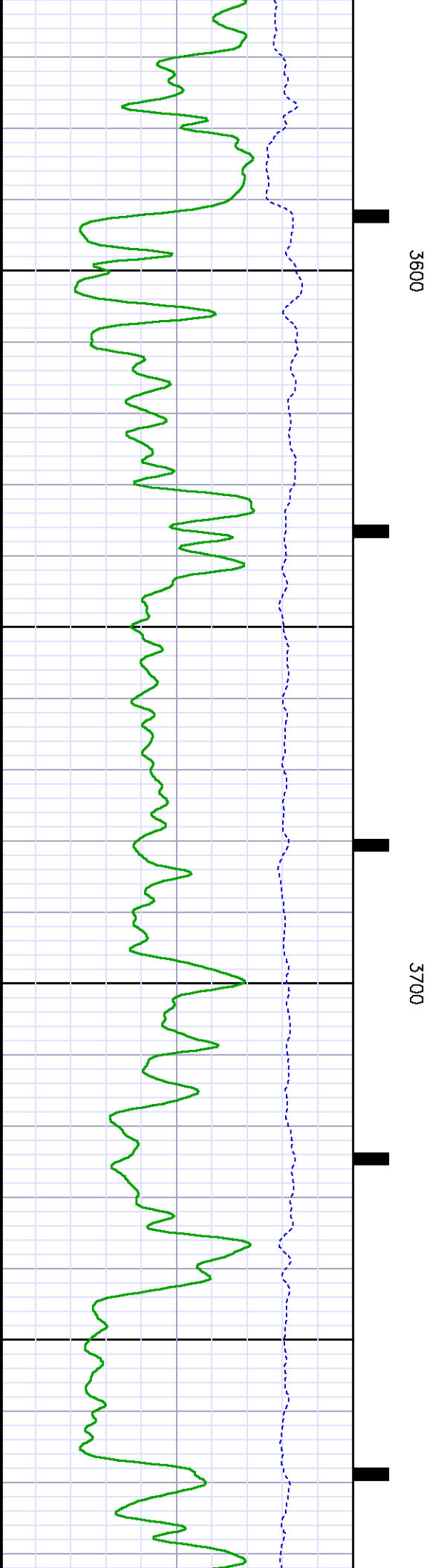
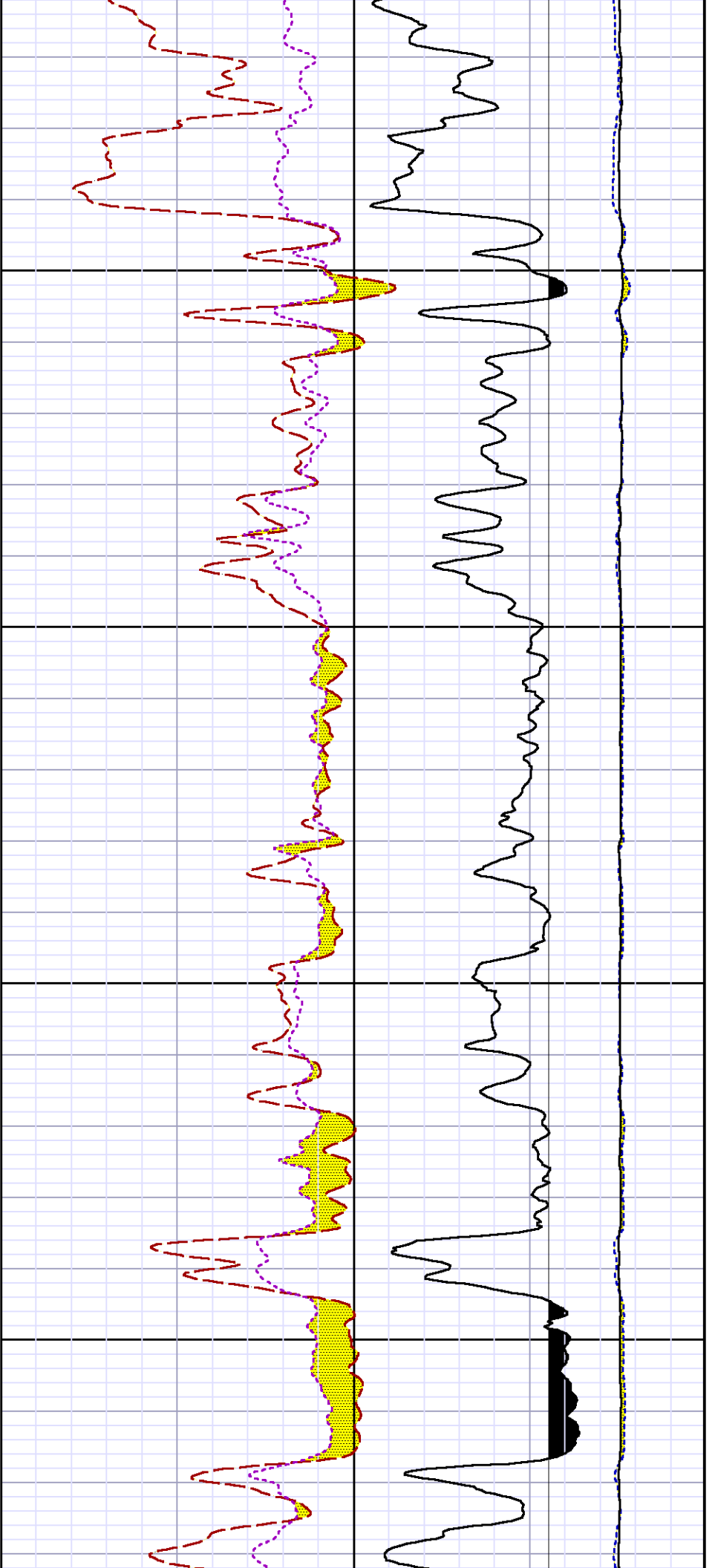
Mode : PlotMgr 5.4.504

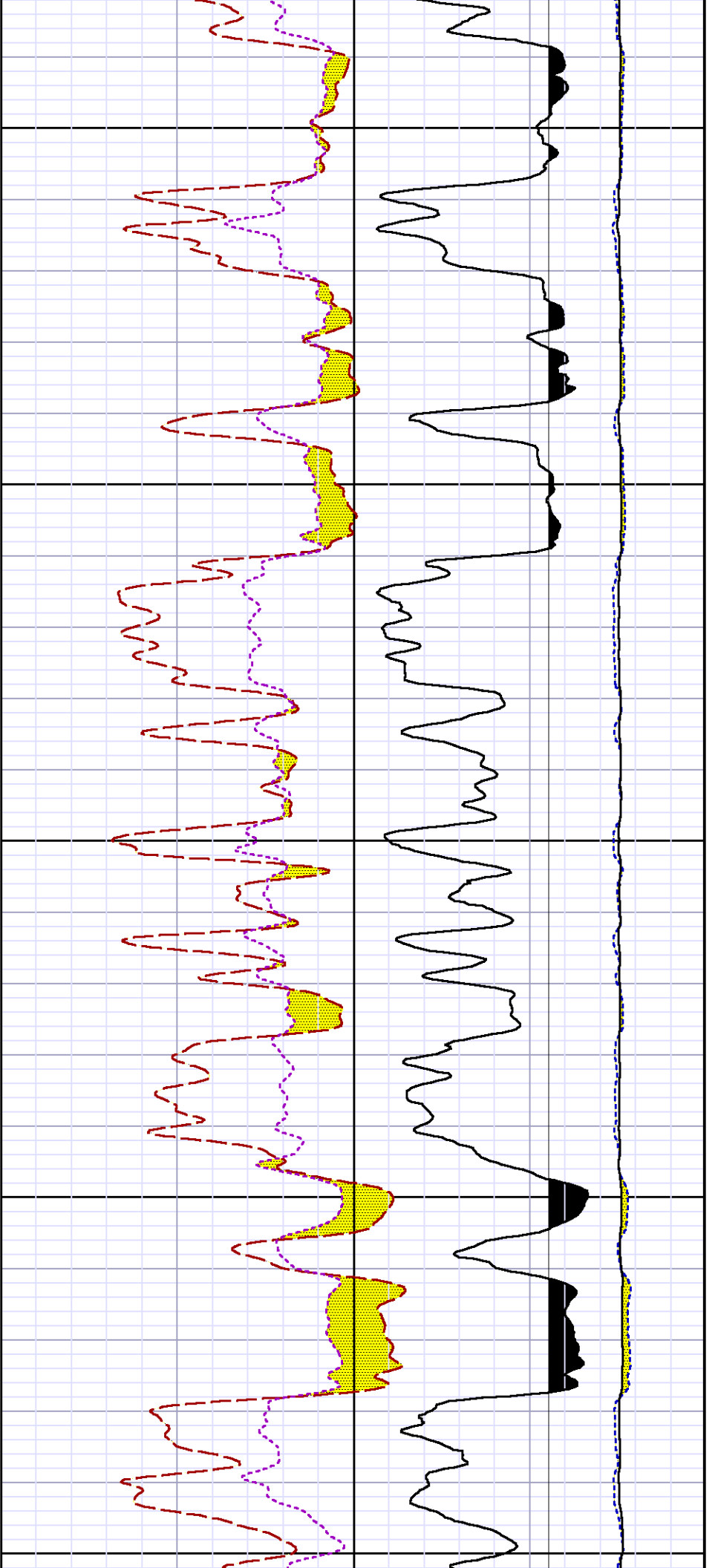
Interval : 3350.00 - 6622.00 feet UP

Created : 8/17/2013 11:12:12 AM





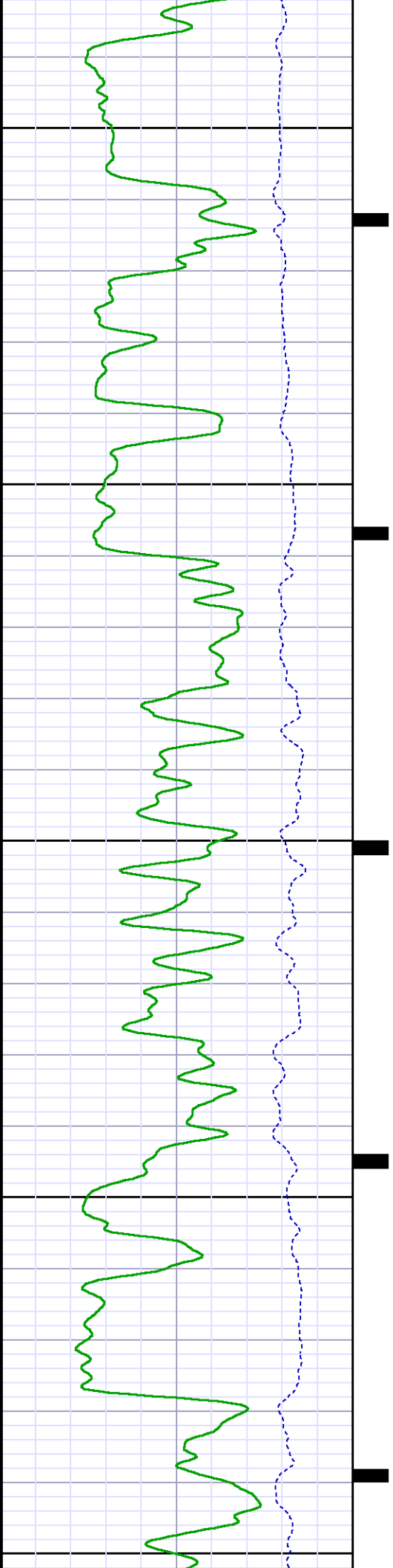


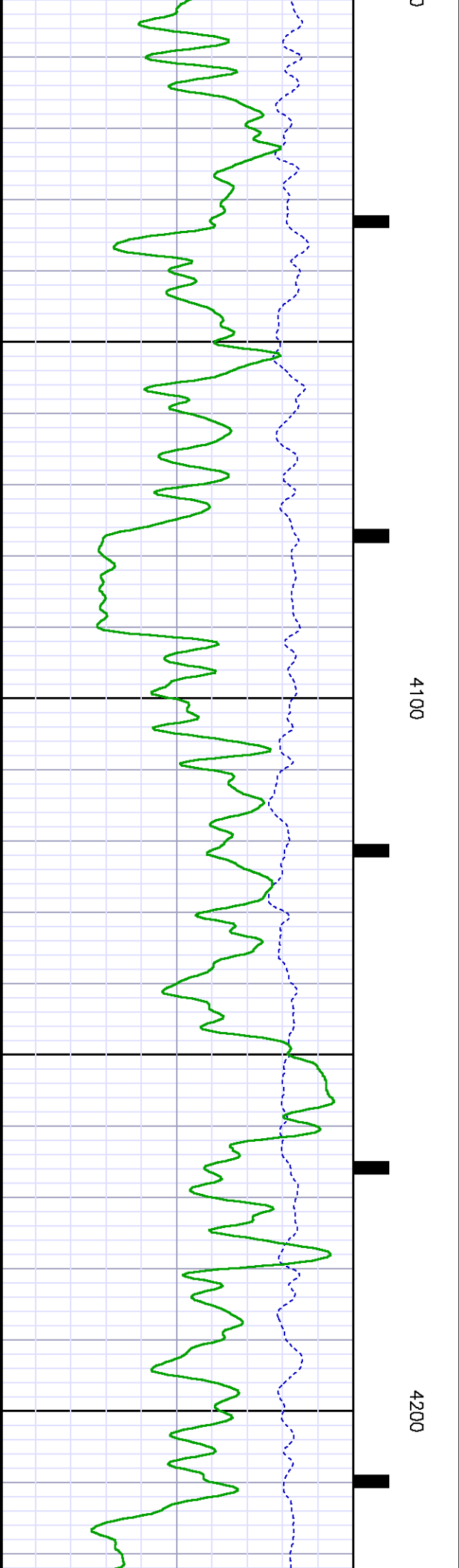
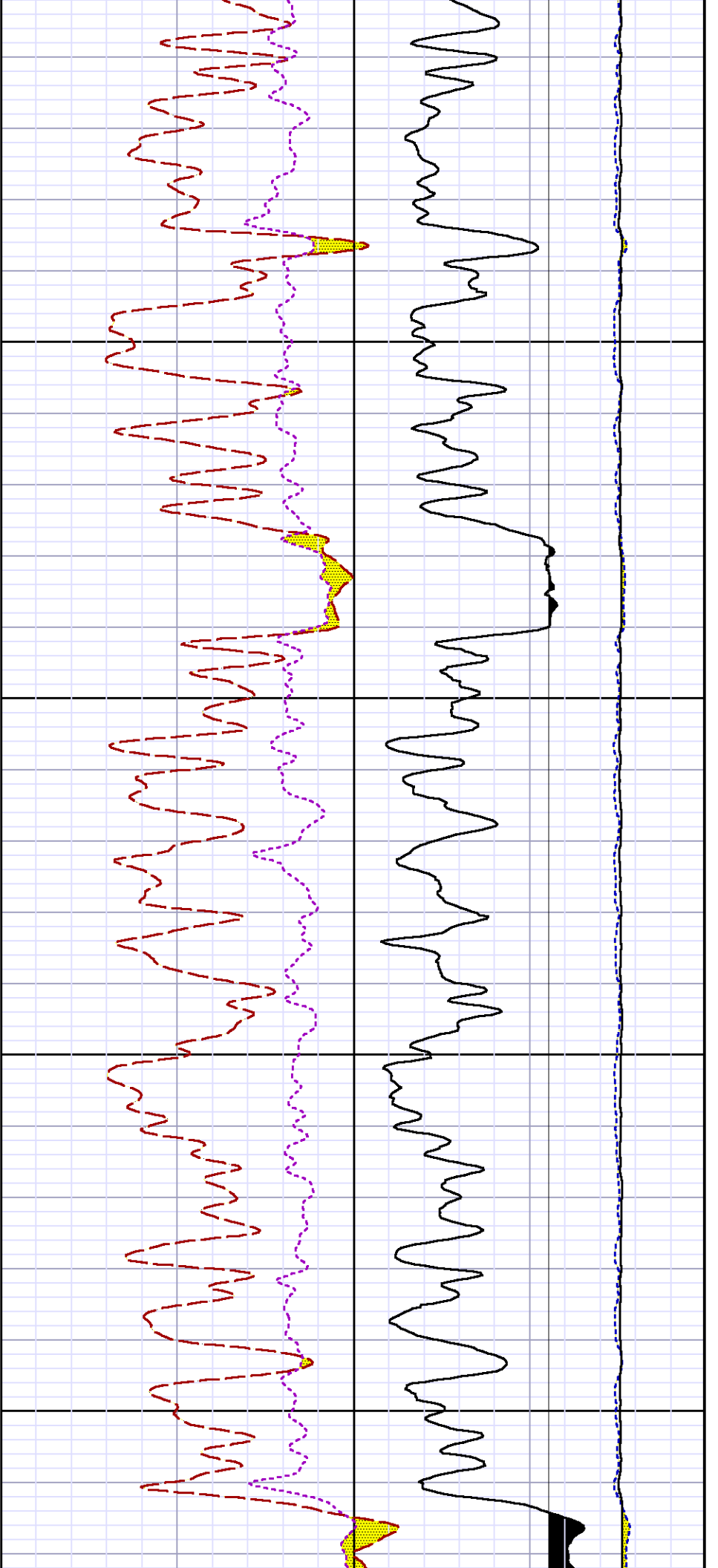


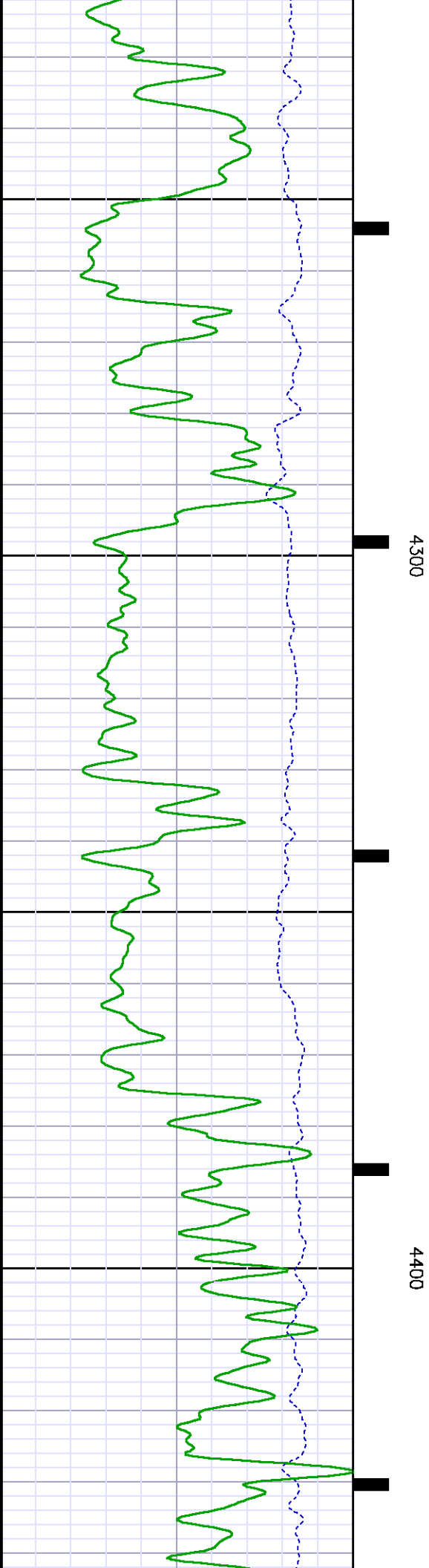
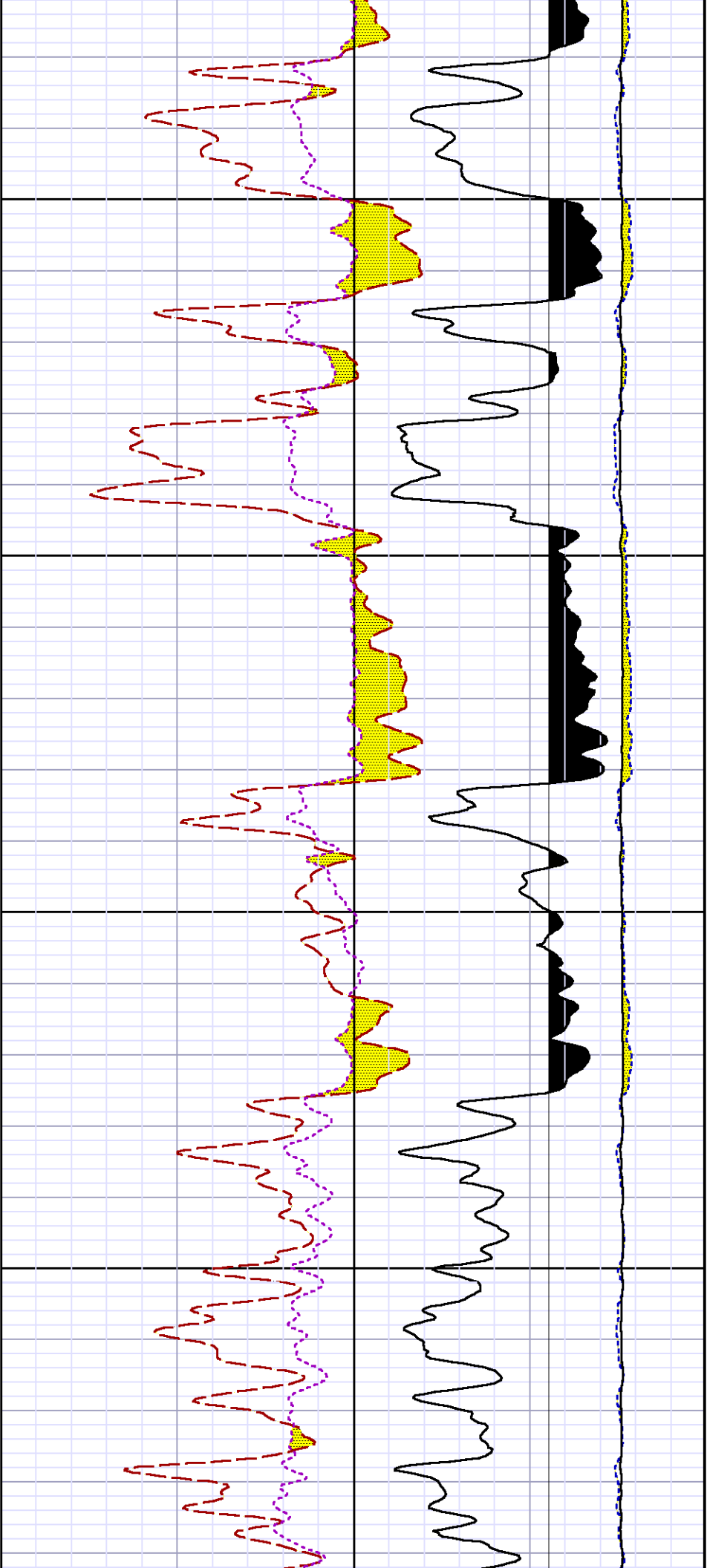
3800

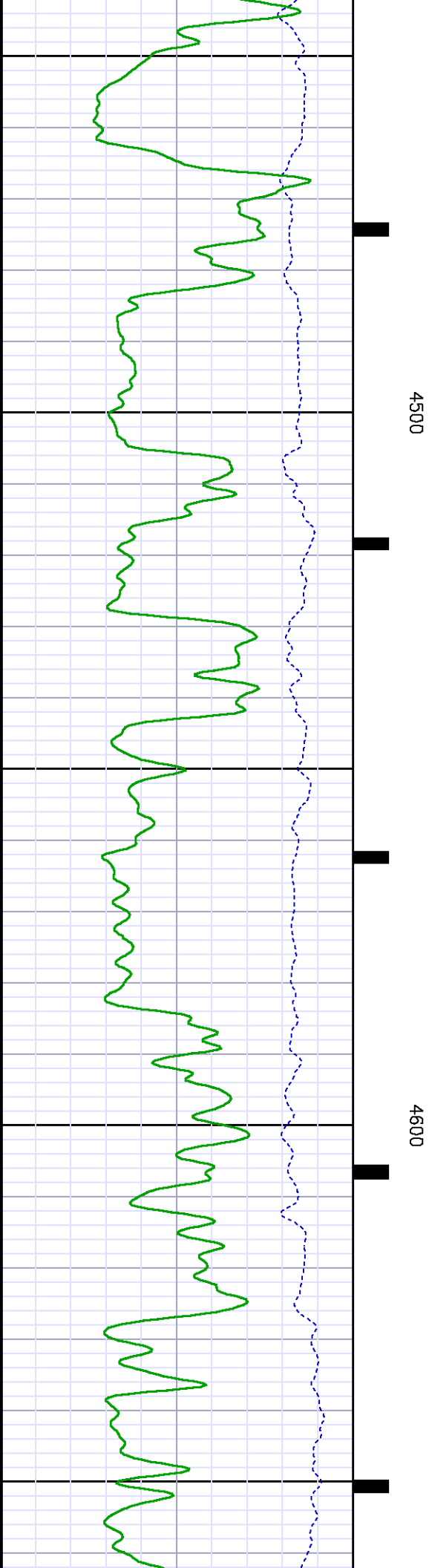
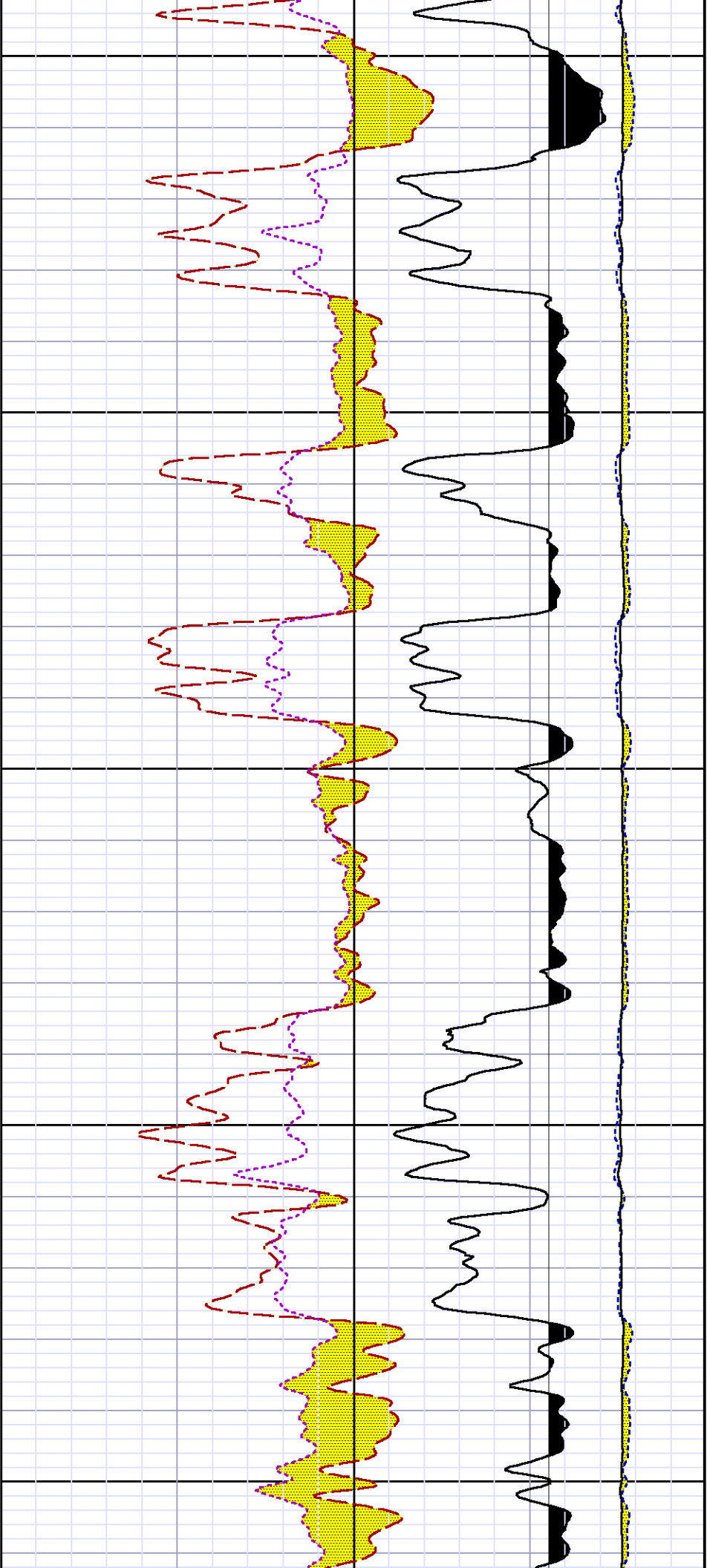
3900

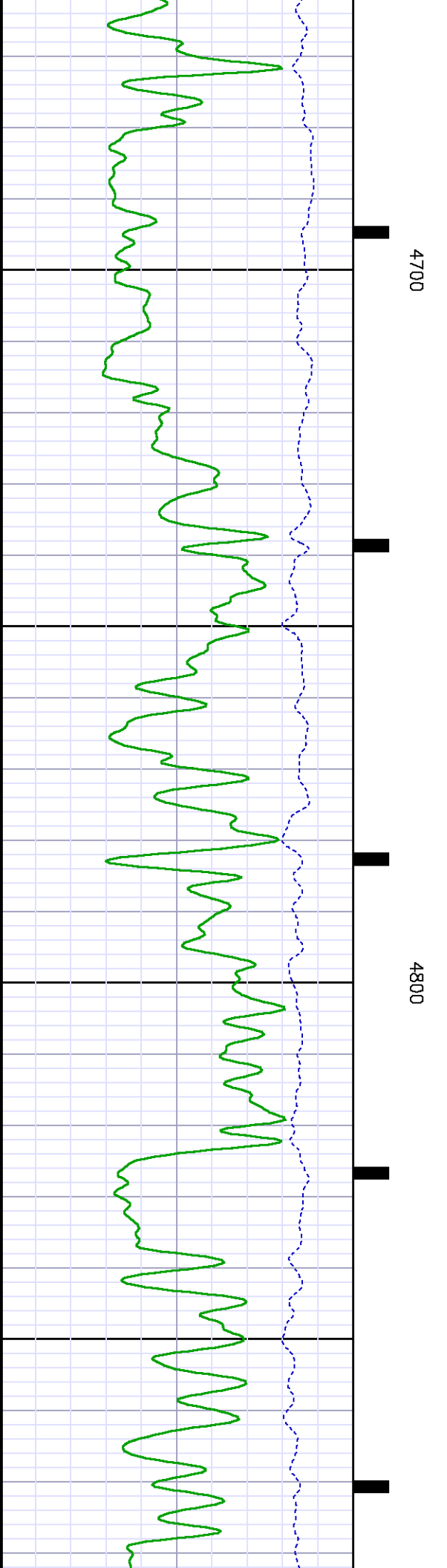
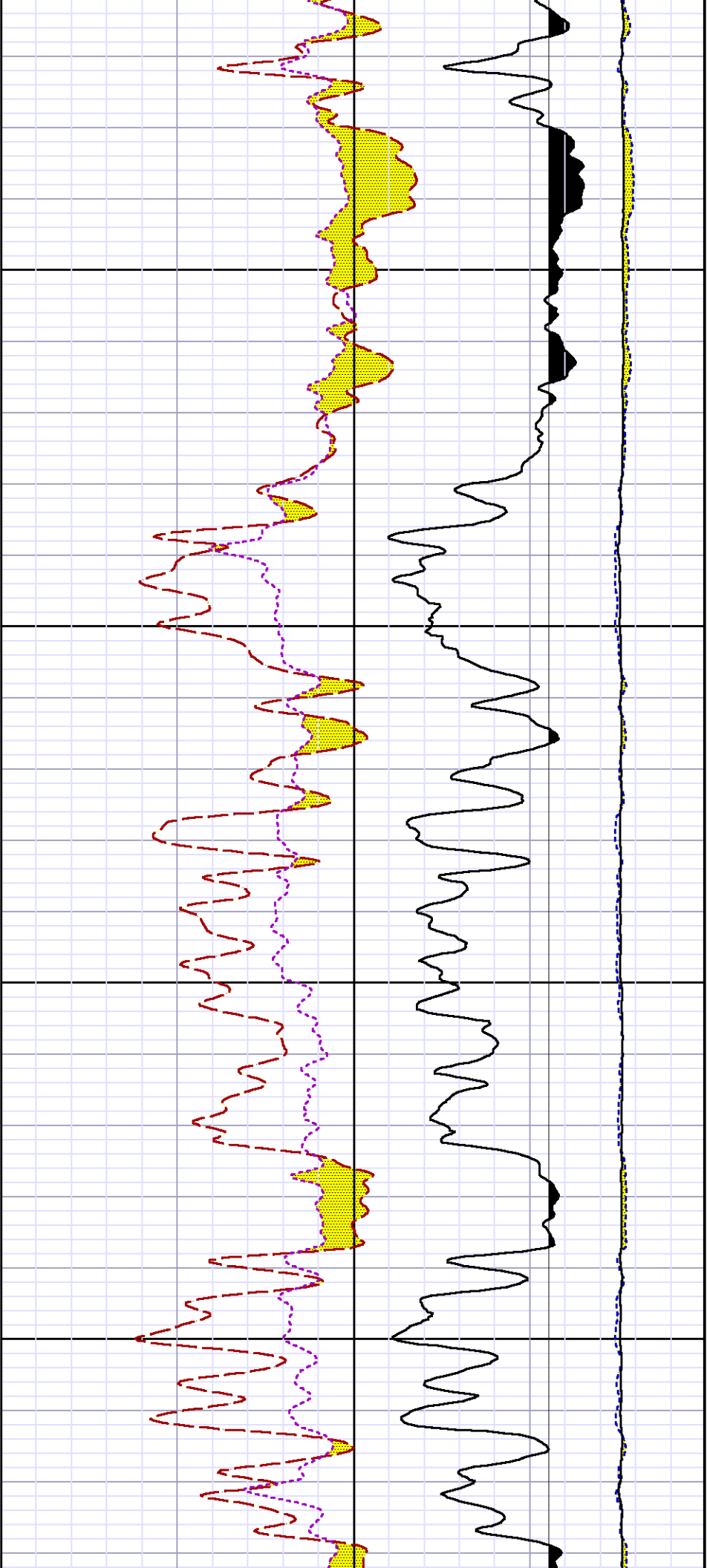
4000

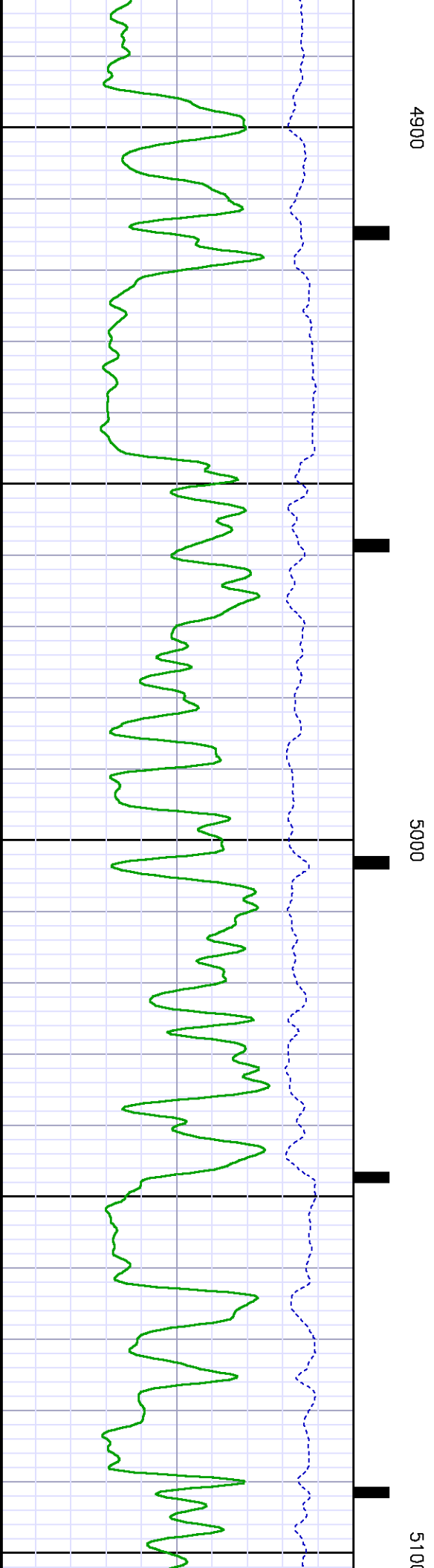
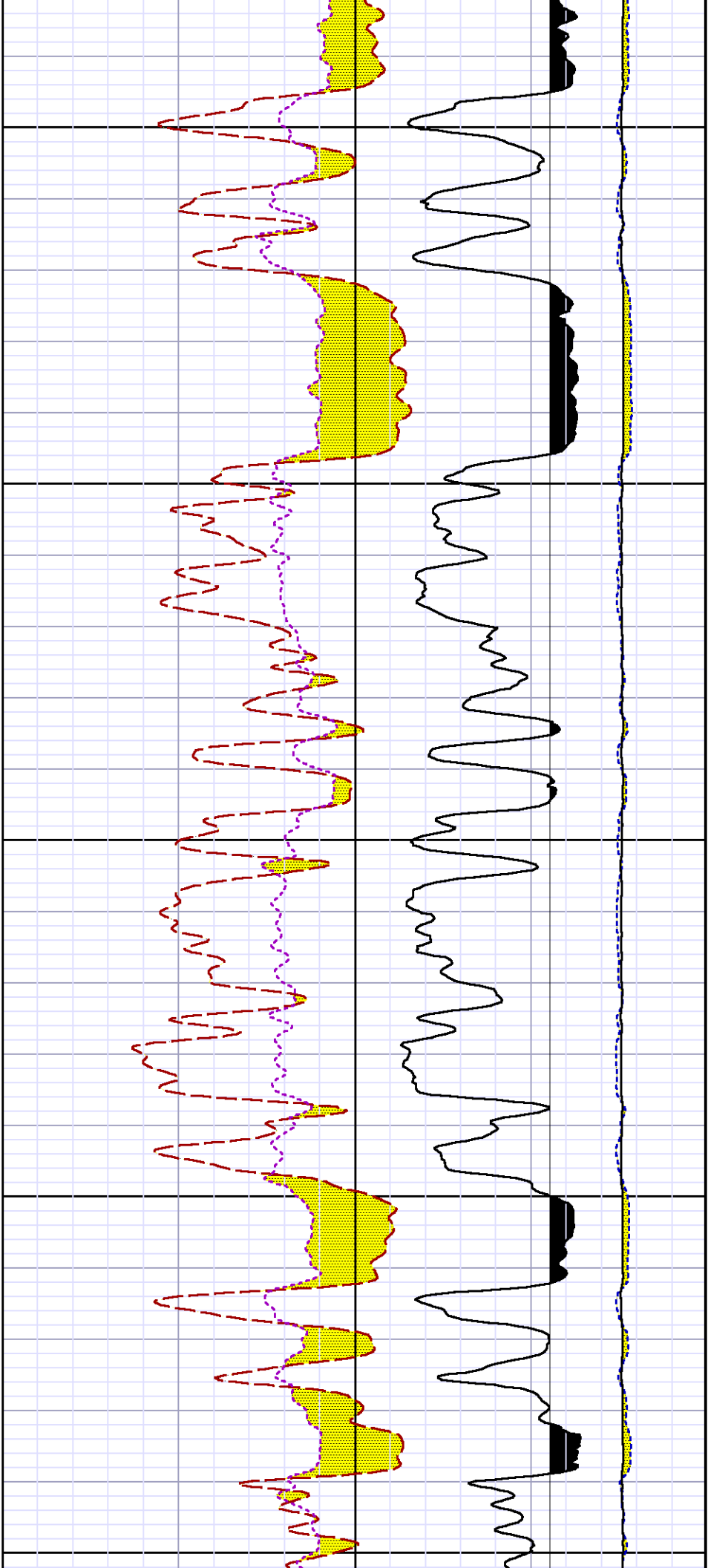


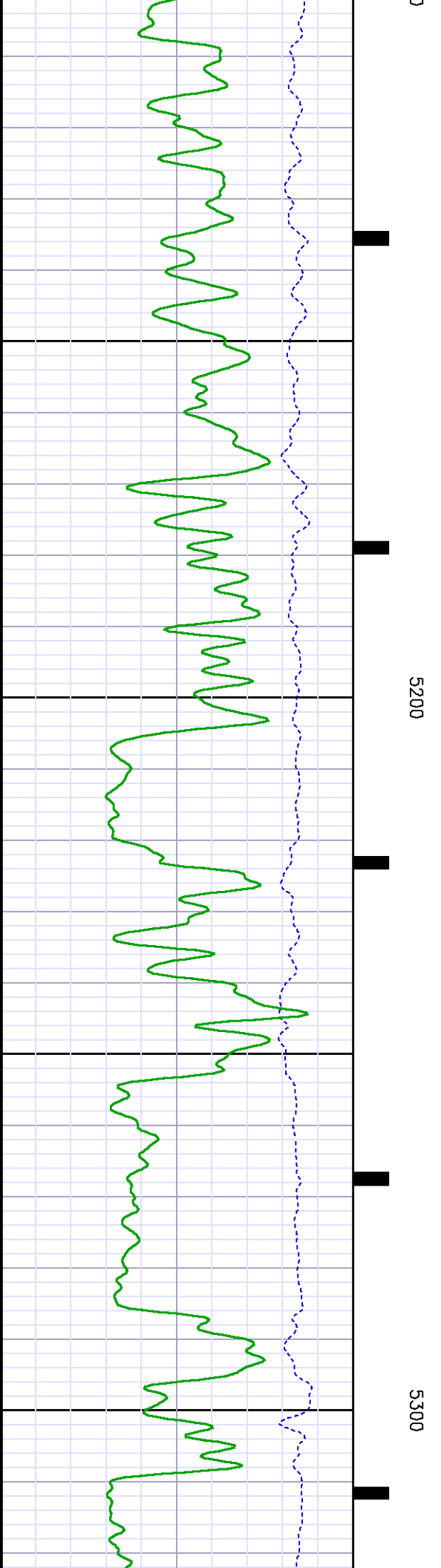
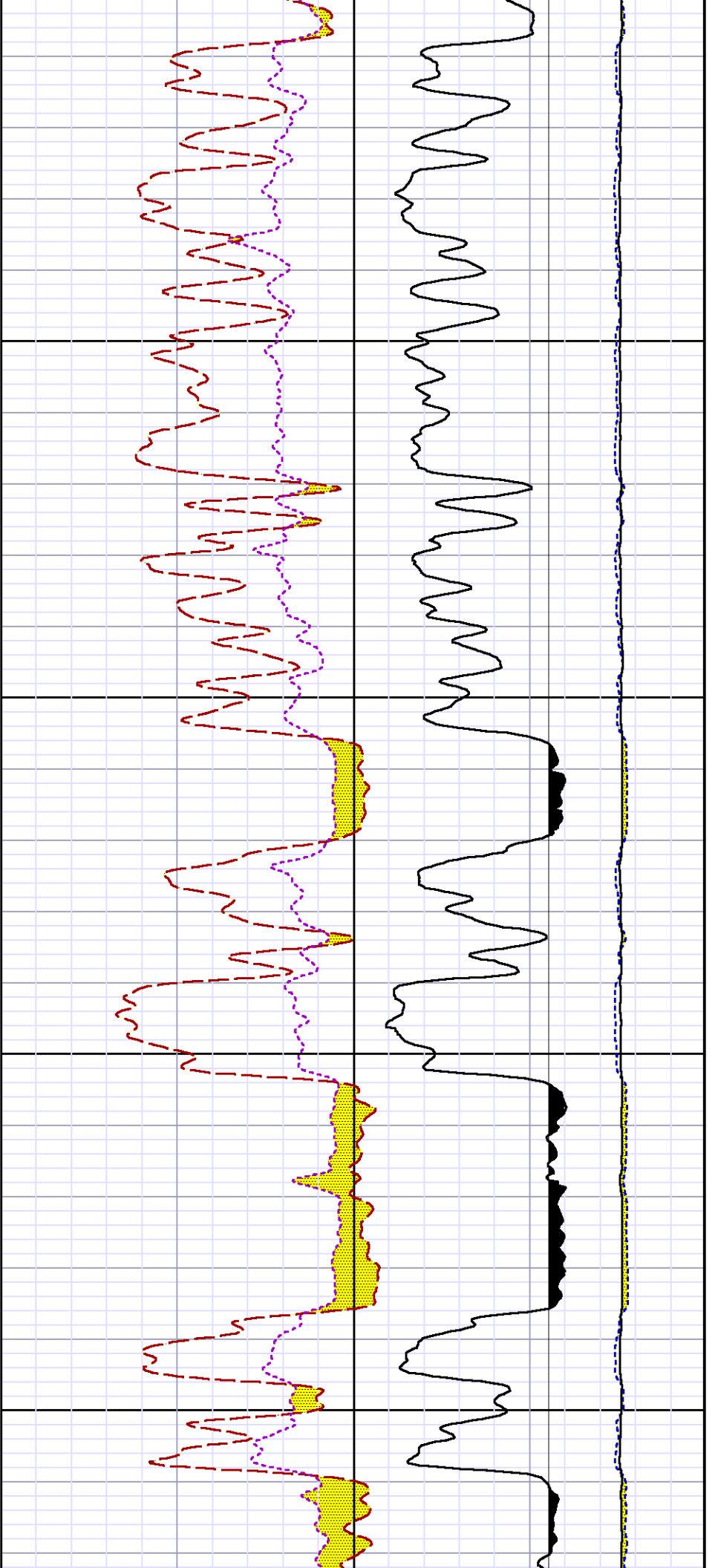


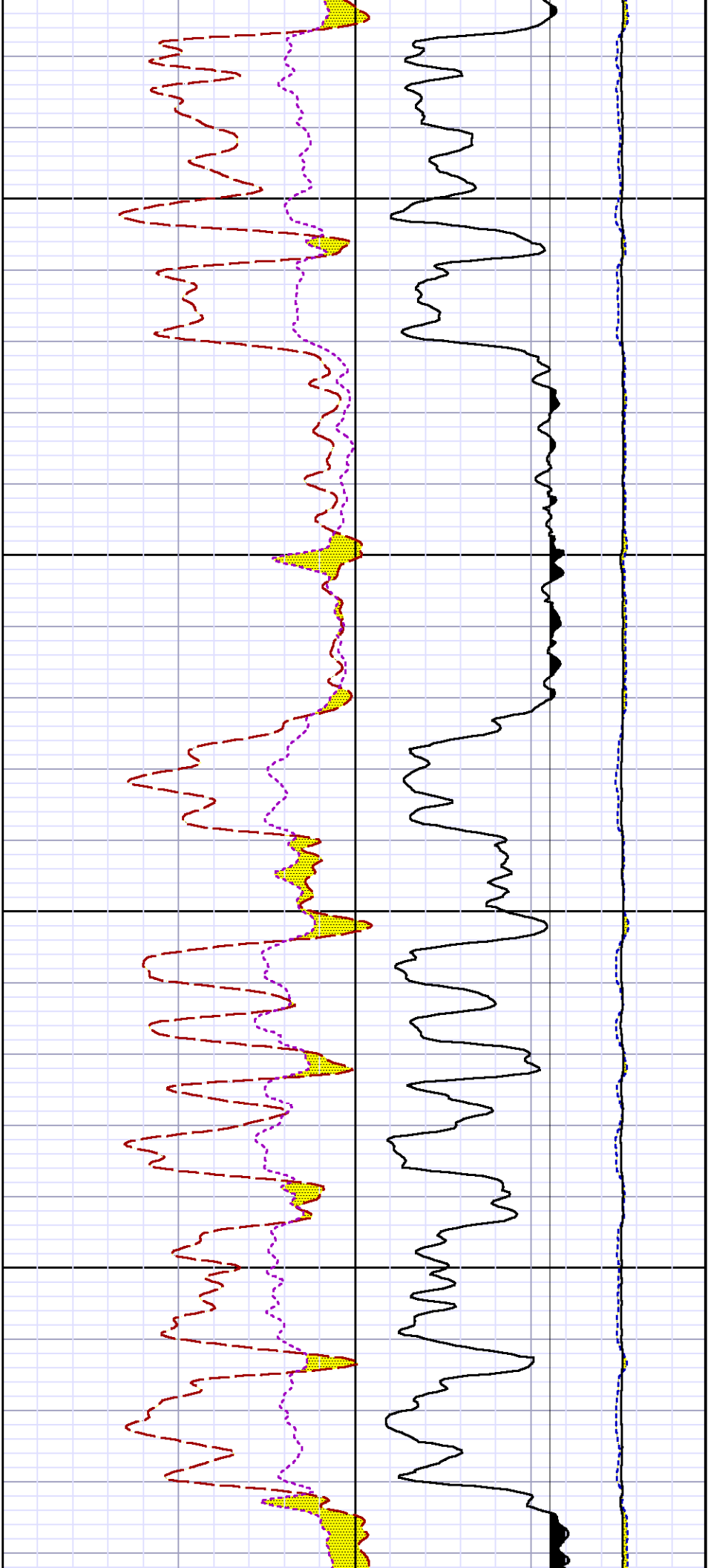






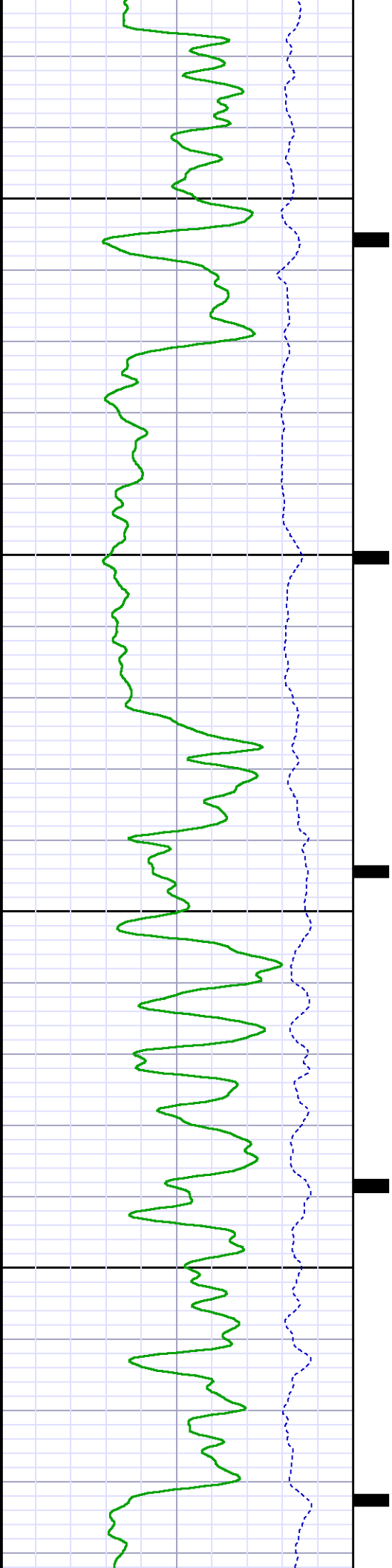


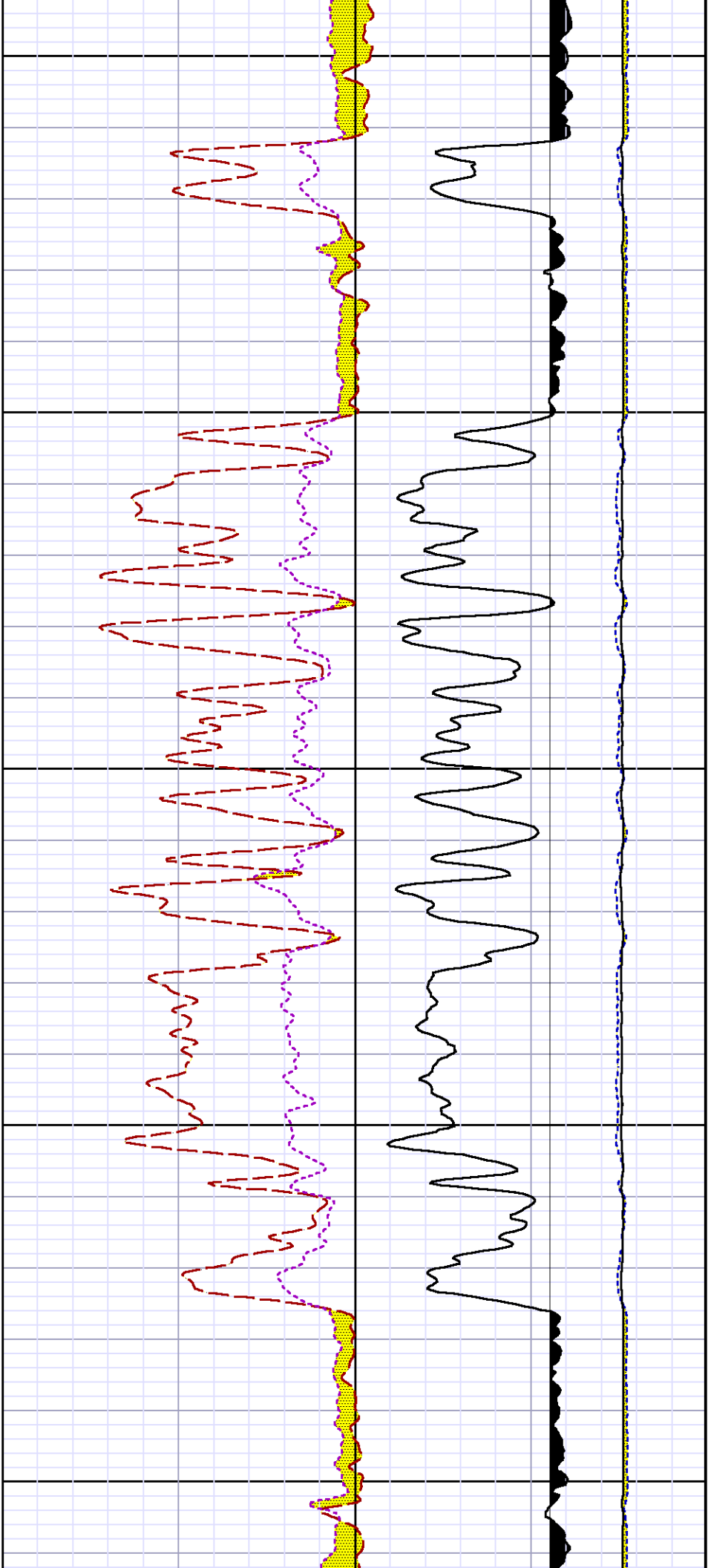




5400

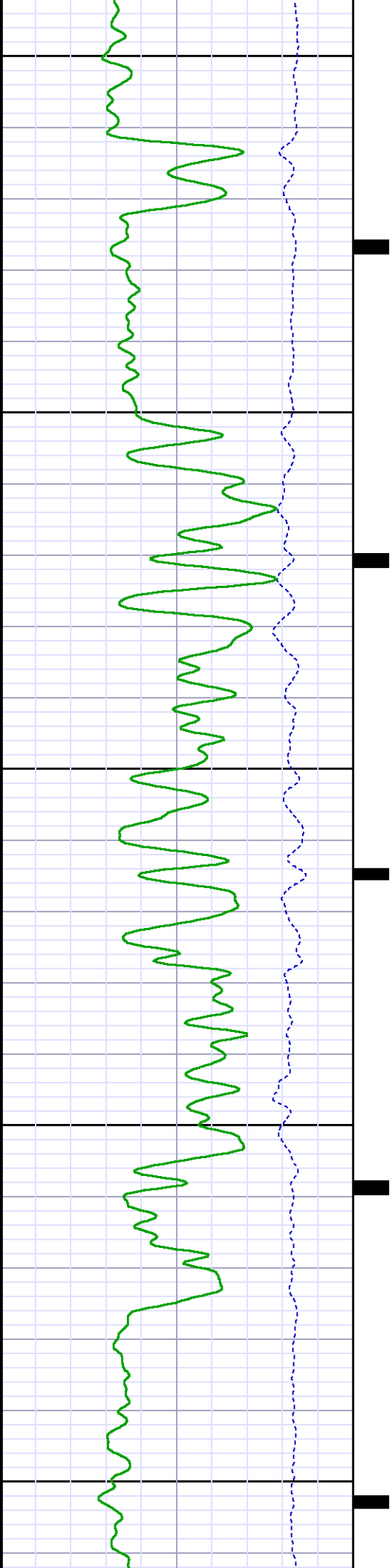
5500

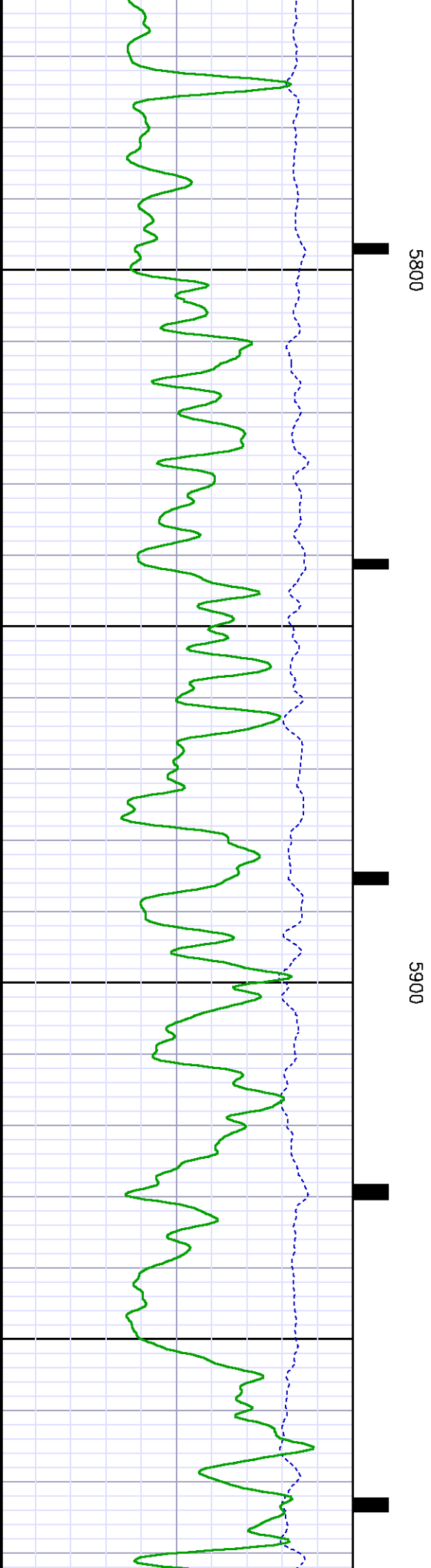
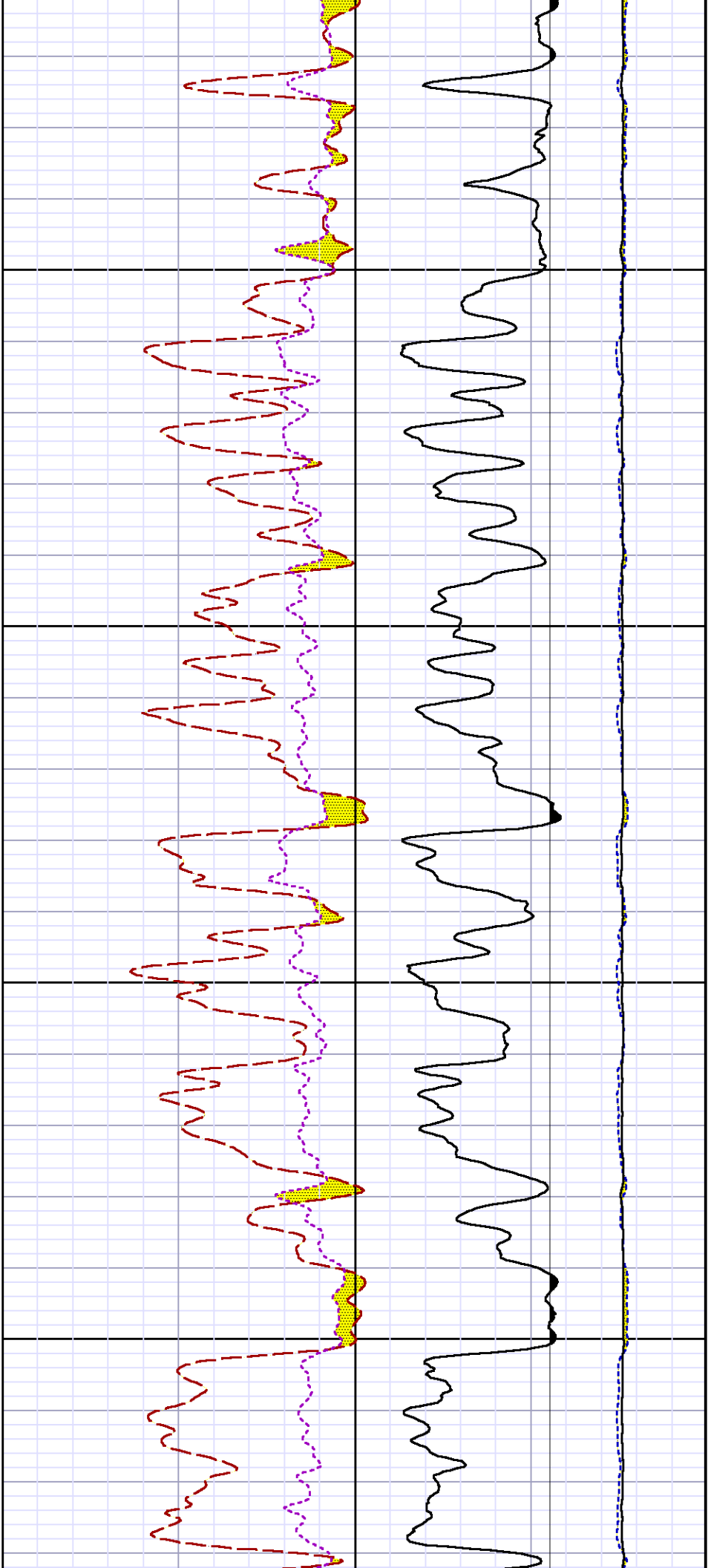


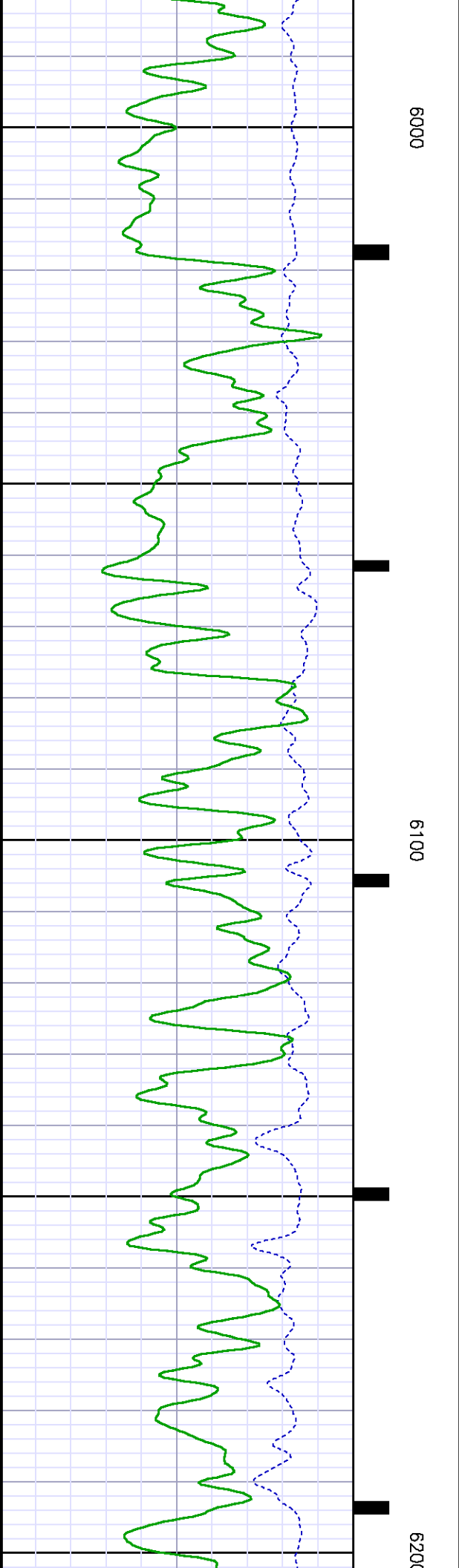
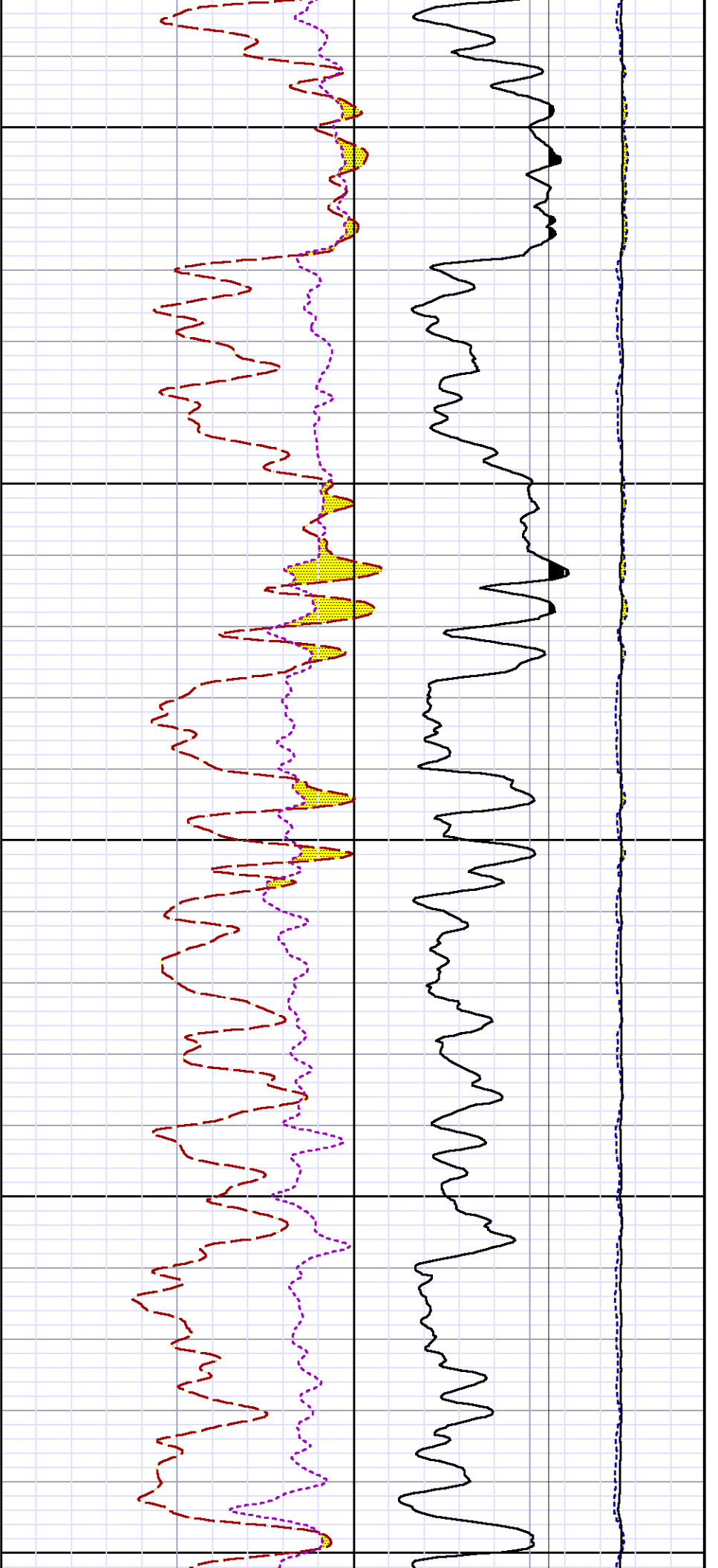


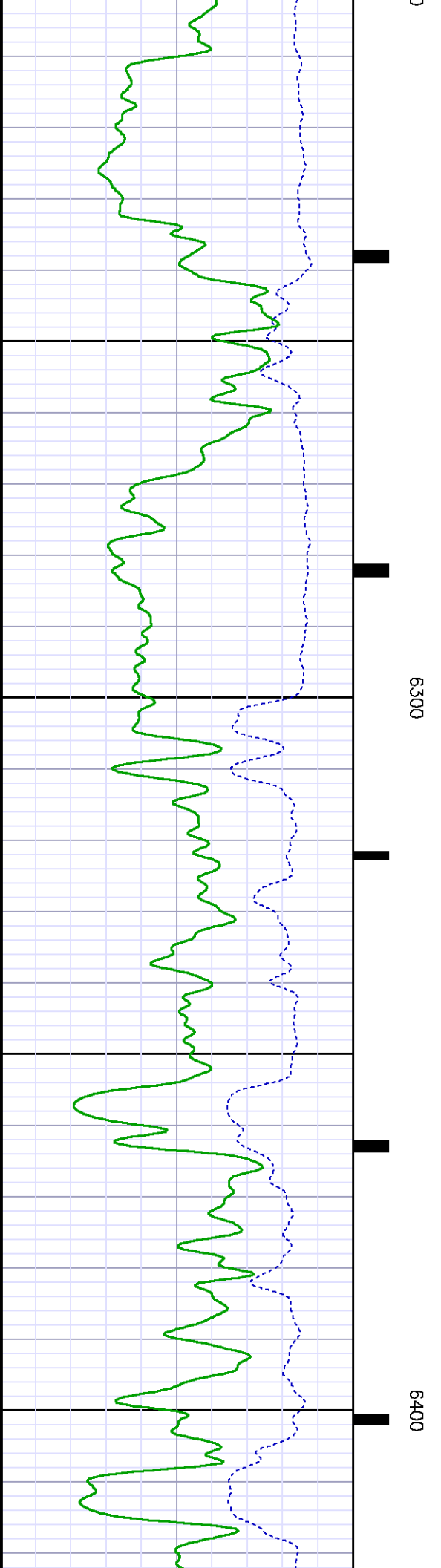
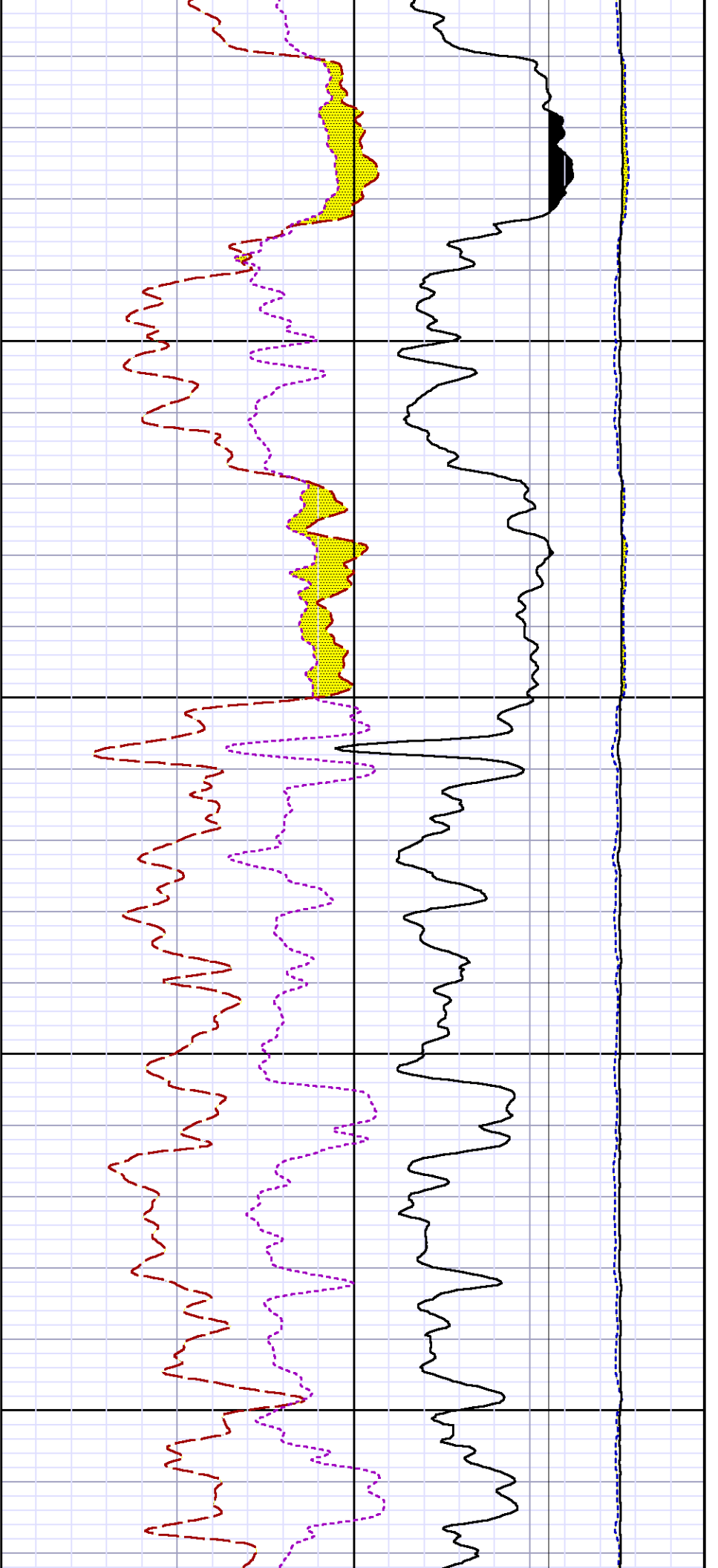
5600

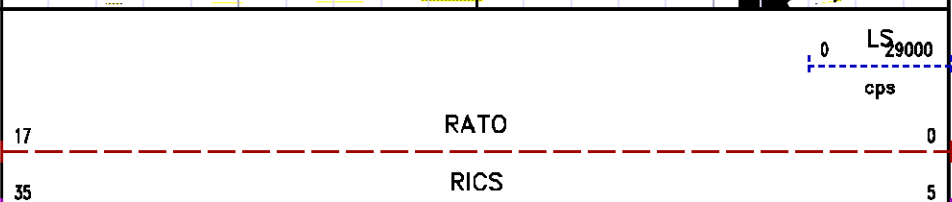
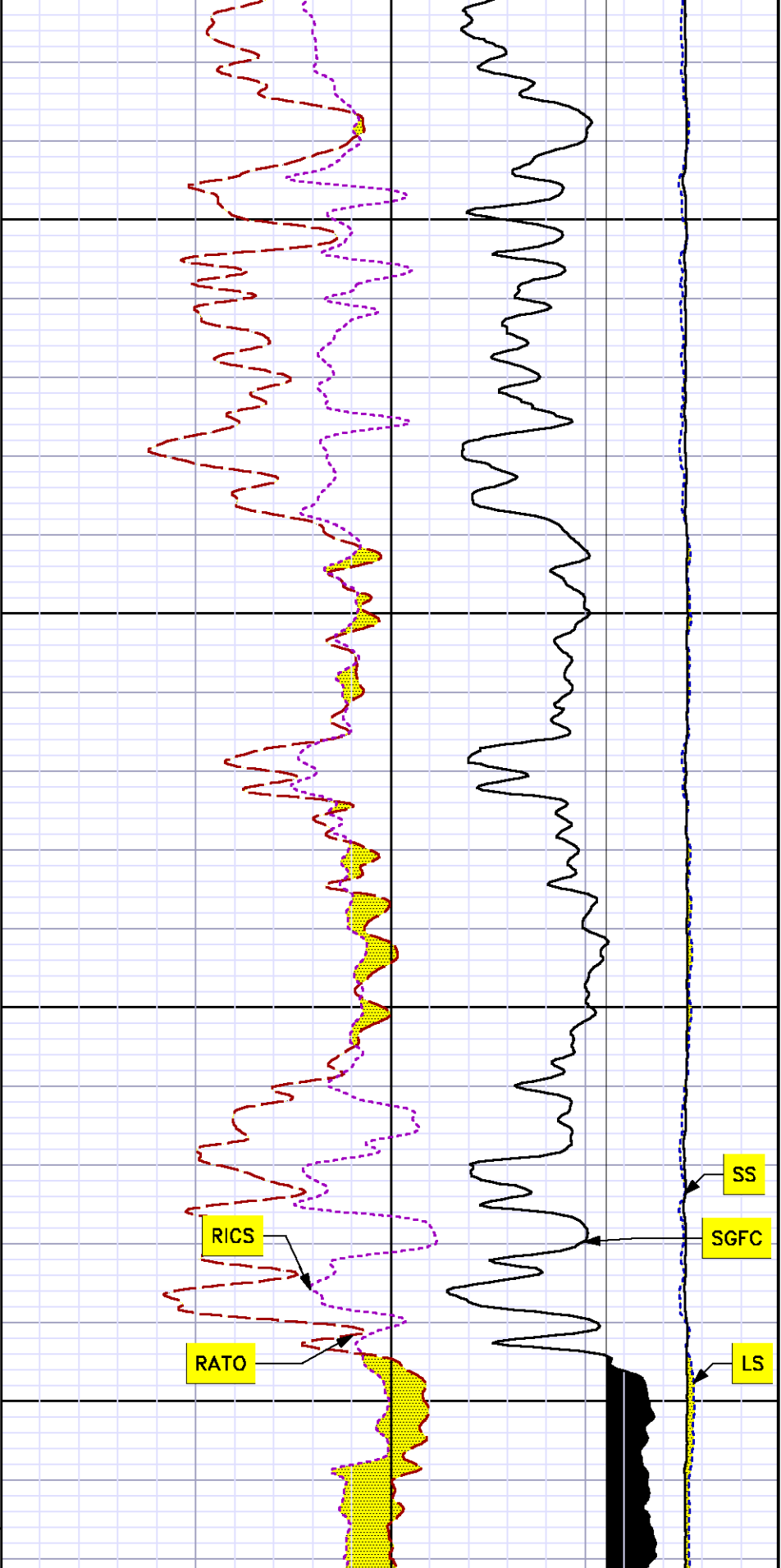
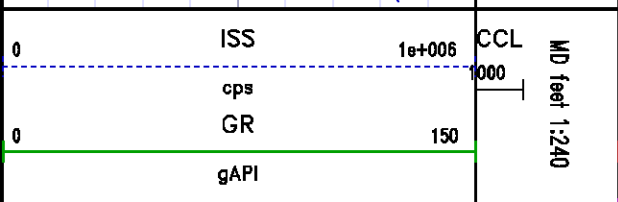
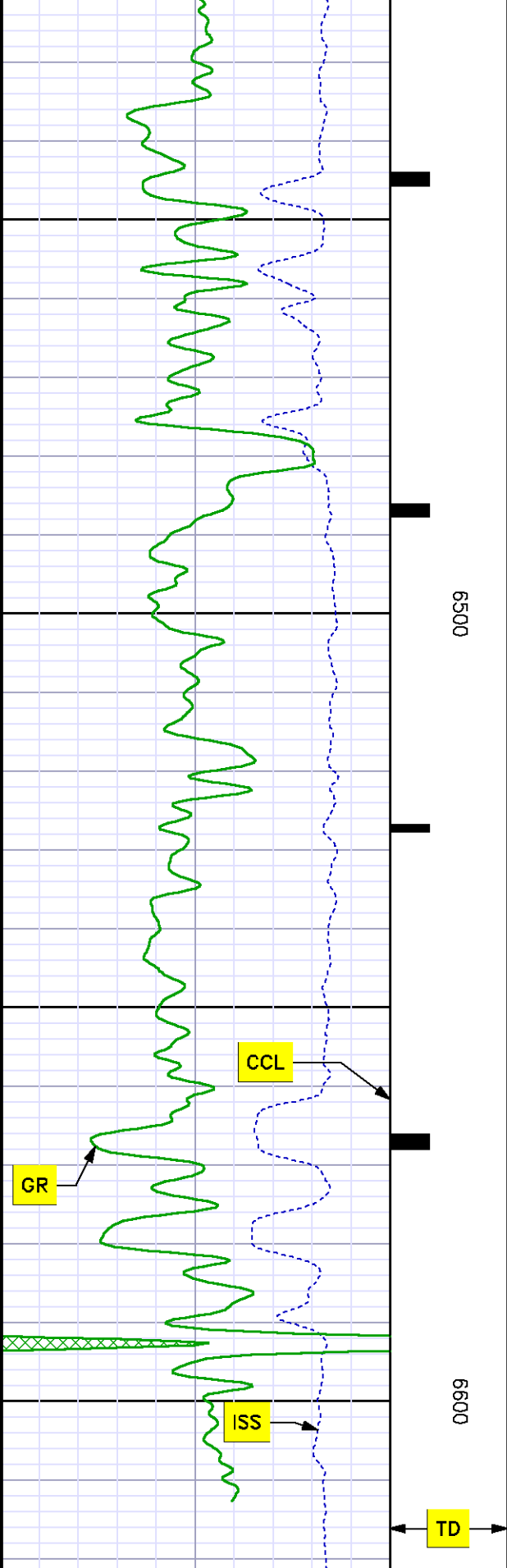
5700











REPEAT SECTION
PNC 3-D MODE

SPL PROCESSING

MEASUREMENT TYPE	PARAMETER	VALUE	UNITS	TOP	BOTTOM
PNC Porosity	Borehole	Cased		5772.976	6085.570
PNC Porosity	Borehole Size	7.750	inch	5772.976	6085.570
PNC Porosity	Casing Size	4.500	inch	5772.976	6085.570
PNC Porosity	Gas Filled	Non Gas Filled		5772.976	6085.570
PNC Porosity	Matrix	Sandstone		5772.976	6085.570

DEPTH OFFSETS

(for Acquired Curves)

SERIES	DEPTH OFFSET	ACQUIRED CURVES					
8248ED	-15.320	FLTM					
8248ED	-13.320	CCL	CHV				
8262XY	-10.189	GR4					
8281XA	-0.662	HVC3Q0	SEQ3	AMA3	AML3	BKX	CXS
		CPT3Q0	CPT3Q2	CPT3Q3	CPT3Q4	ET3	IXS
		MCS3	MCS3Q0	QCAL3	RGN3	RICX	SDA3
		SDL3	SGA3	SGL3	STA3	XS	ASPEC3
		AMB3	AMF3	CHF3	IXSC	IXSN	RAT023
		RICXC	RIN13C	RIN23	RIN23C	SD3D	SG3D
		SGB3	SGF3	WDTH3	CXSR	IXSR	XSR
		RICXR					
8281XA	-0.250	HVC2Q0	SEQ2	AMA2	AMB2	AMF2	AML2
		BKL	CHF2	CLS	CPT2Q0	CPT2Q2	CPT2Q3
		CPT2Q4	ET2	ILS	LS	MCS2	MCS2Q0
		QCAL2	RGN2	RICL	RONE23	RTW023	SDA2

8281XA

0.000

SDL2	SGA2	SGB2	SGF2	SGK2	SGL2
STA2	ASPEC2	ILSC	ILSN	WDTH2	RICLC
CLSR	ILSR	LSR	RICLR		
CPRS	HVC1Q0	MV	SEQ	SEQ1	AMA1
AMB1	AME1	AMF1	AML1	BKS	CHF1
CSS	CORB	CORF	CPT1Q0	CPT1Q2	CPT1Q2A
CPT1Q2B	CPT1Q2C	CPT1Q3	CPT1Q4	CPT1Q5	ET1
G1	G2	GE1S	GE2S	ISS	MCS1
MCS1Q0	QA1	QCAL1	QM1	RAT0	RAT013
RB0R	RGN1	RICS	RIN	RONE	RP0R
RTW0	RIN13	RONE13	RTW013	SALB	SC1
SDA1	SDL1	SGA1	SGB1	SGBC	SGE1
SGF1	SGFC	SGK1	SGL1	SS	SS2
STA1	PD1S	PD2S	PD3S	MD1S	MD2S
MD3S	DG1S	DG2S	DG3S	PD1M	PD2M
PD3M	MD1M	MD2M	MD3M	DG1M	DG2M
DG3M	MVS	MA	MM	FILV	IAM
TA	PVM	PVS	IAS	SSTAT	QPD1
QPD2	QPD3	QMD1	QMD2	QMD3	QDG1
QDG2	QDG3	QMA	QTA	QFILV	QMV
QPV	QIA	DERR	DCNT	QPK1	QSA1
PKS1	ASPEC1	HOC	FE2XC	ISSC	RINC
ISSN	RDEN	WDTH1	RICSC	CSSR	G1R
G2R	ISSR	SSR	SS2R	RAT0R	RAT013R
RB0RR	RICSR	RINR	RIN13R	RONER	RP0RR
RTWOR					
SYSTEM		TEN	TEN		

SYSTEM

0.000

Created by : RPM9, v5.3.1.0

Plotted by : PlotMgr, v5.4.504

Company : WPX ENERGY

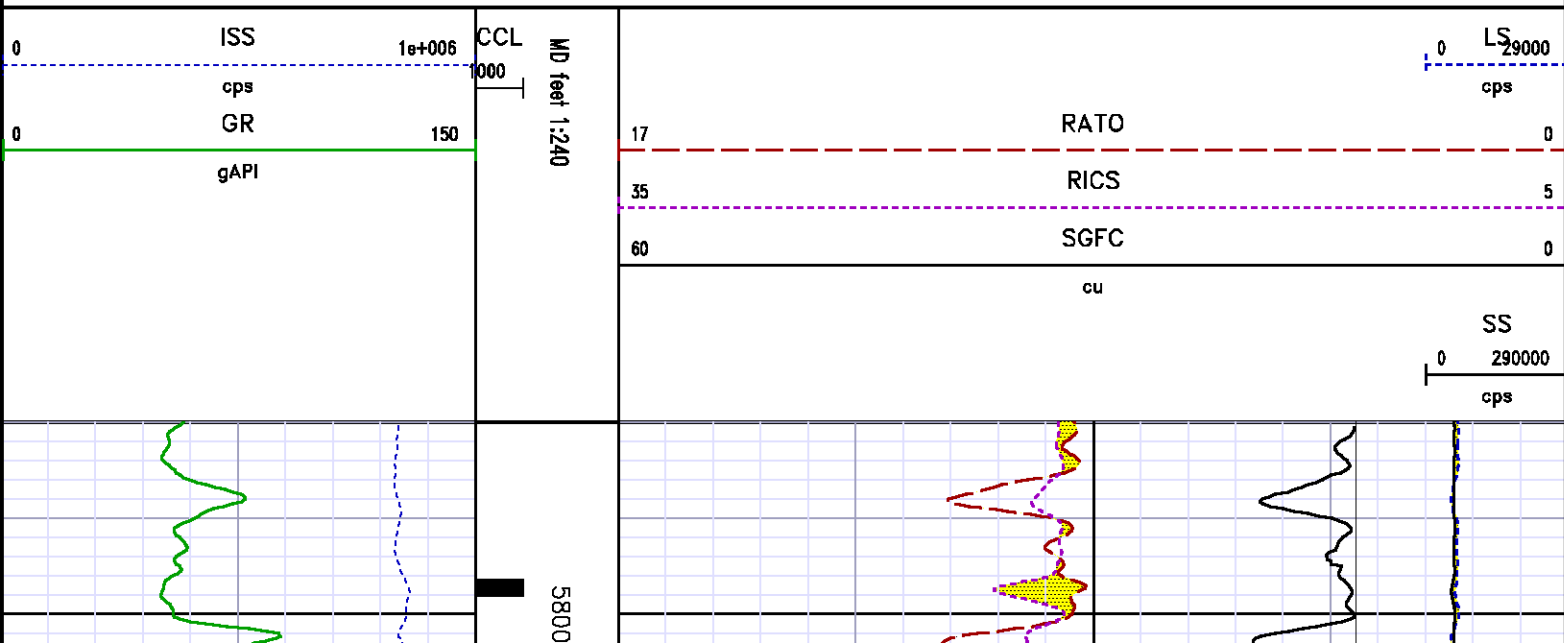
Well : WPX ENERGY GM 424-34

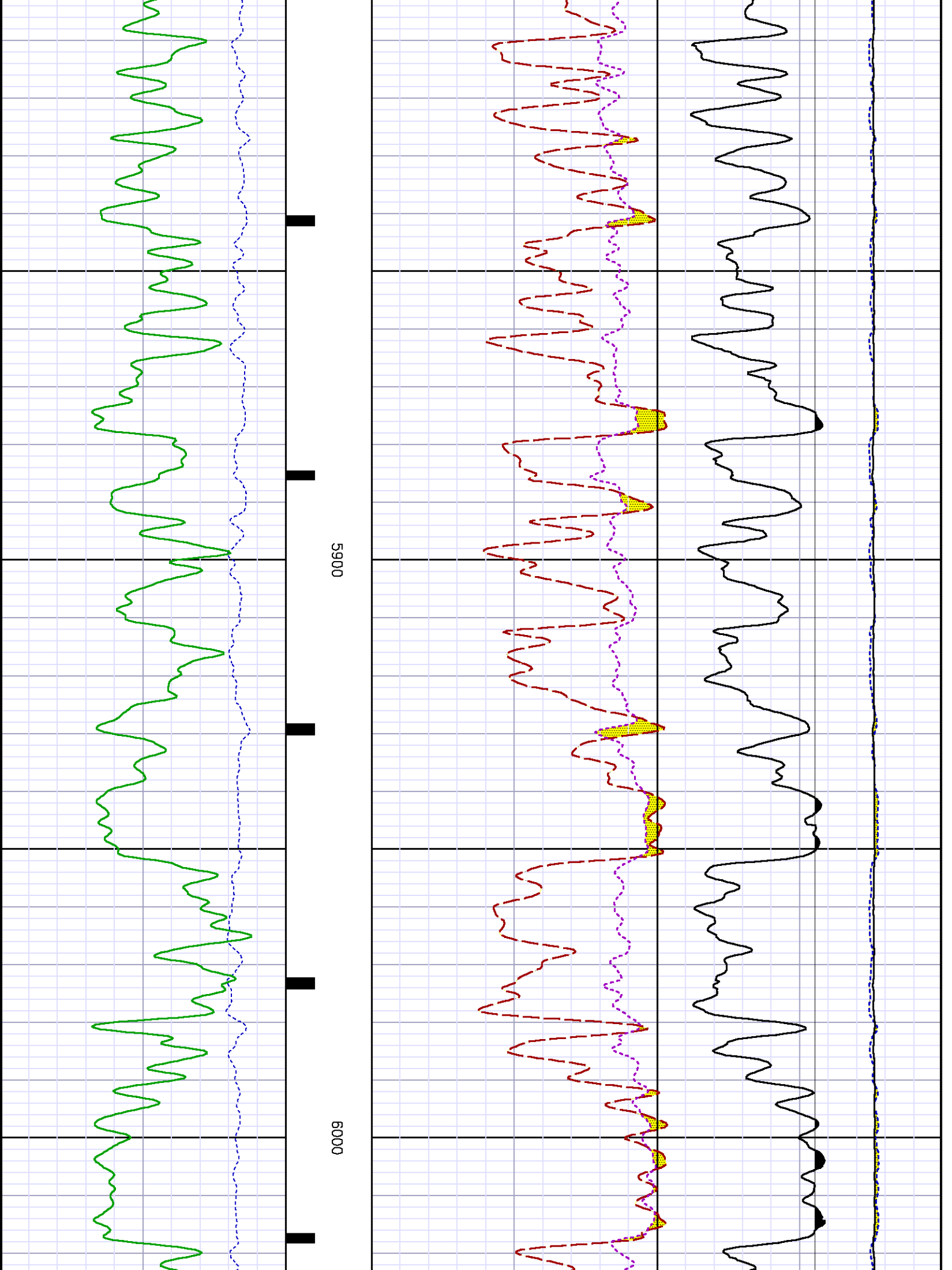
File Name : d:\welldata\wpx energy\gm 424-34\rp424\repeat.xtf

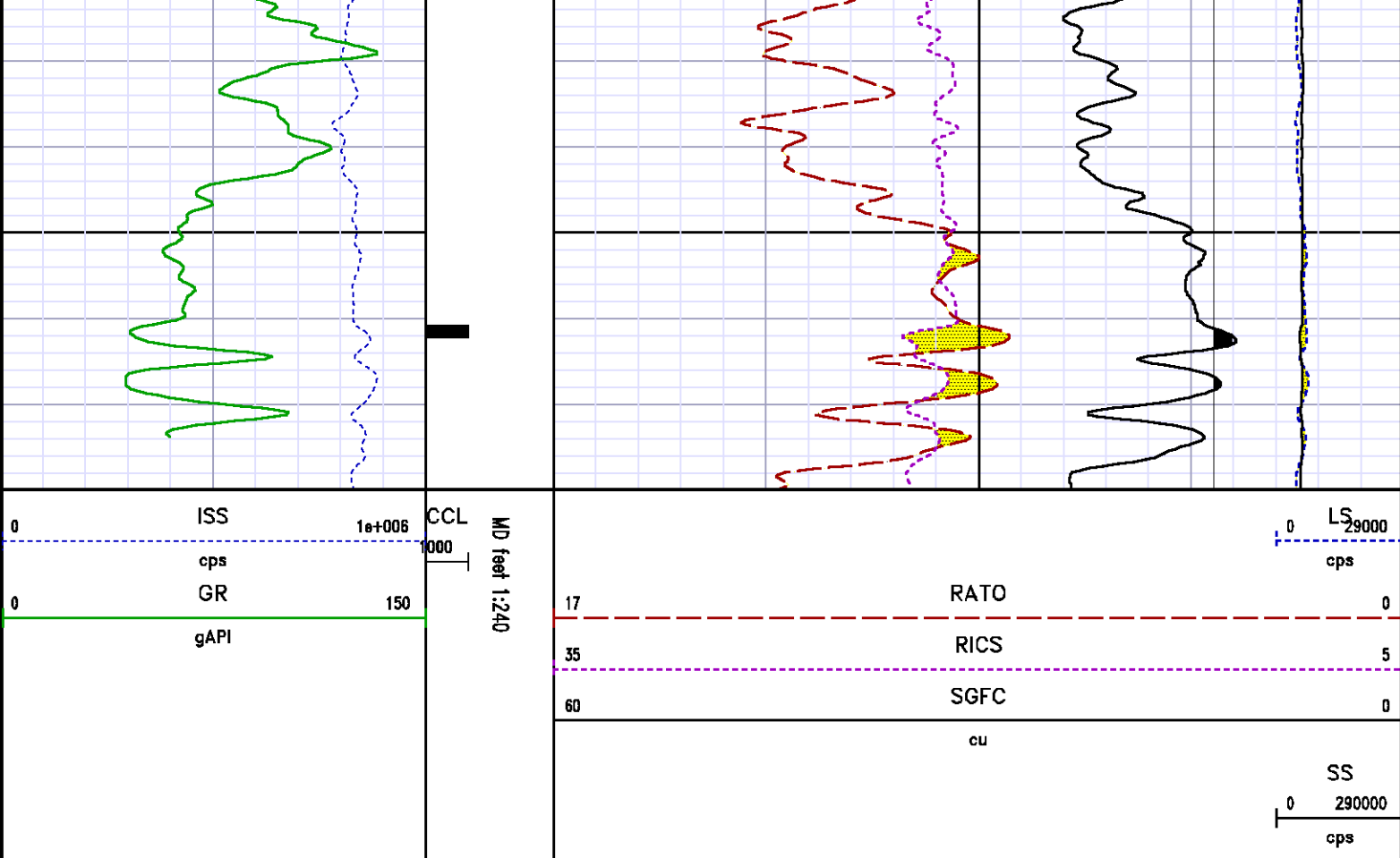
Mode : PlotMgr 5.4.504

Interval : 5780.00 - 6080.00 feet UP

Created : 8/17/2013 10:46:16 AM







CALIBRATION SUMMARY

GAMMA RAY (GR4)

Calibration File: C:\case\calver\GR\470J9.cal

CALIBRATION SUMMARY

DATE/TIME PERFORMED: Fri Jul 19 08:23:22 2013

TOOL SERIES: 8262XY ASSET: 470 SEQ: J9

Calibrator #	Background [cps]	Calibrator On [cps]
S2K JIG	119.20	447.27

Multiplicative	Background [api]	Calibrator On [api]	Differential [api]
0.549	65.40	245.40	180.00

Verification File: C:\case\calver\GR\470J9.VP

PRIMARY VERIFICATION

DATE/TIME PERFORMED: Fri Jul 19 08:26:05 2013

TOOL SERIES: 8262XY ASSET: 470 SEQ: J9

Calibrator #	Background [cps]	Calibrator On [cps]
--------------	------------------	---------------------

Multiplicative	Background [api]	Calibrator On [api]	Differential [api]
----------------	------------------	---------------------	--------------------

PNC

Calibration File: C:\case\calver\PNC\555J6.cal

PNC 3D CALIBRATION SUMMARY

DATE/TIME PERFORMED: Fri Jul 26 12:55:08 2013 TOOL SERIES: 8281XA ASSET: 555 SEQ: J6

Calibrator #

shop barrel

Source #

8281AA 11765054

	ISS	Mtr VIts (V)	SS Gain	LS Gain	XLS Gain	EA Temp (degF)	Sync Delay (usec)	RCAL
Raw Data	817093	121.00	2316.00	2261.00	2222.00	111.81	7.00	0.9843
Interpolated	1300000	139.01	2298.19	2258.70	2216.67			

	ISS	BKS	BKL	BKX	SGA1	SDA1	SGA2	SDA2
Raw Data	817093	6192.69	983.08	141.84	25.77	0.14	24.27	0.28
					25.35 26.40	0.00 0.20	23.60 24.80	0.00 0.40

	ISS	ILS	IXS	SS	SS2	LS	CSS	CLS
Raw Data	817093	171203.97	26411.91	88977.66	31679.46	8262.92	53839.95	13229.47
Fit Quality %		0.24	0.41	0.56	0.56	0.17	0.55	0.22

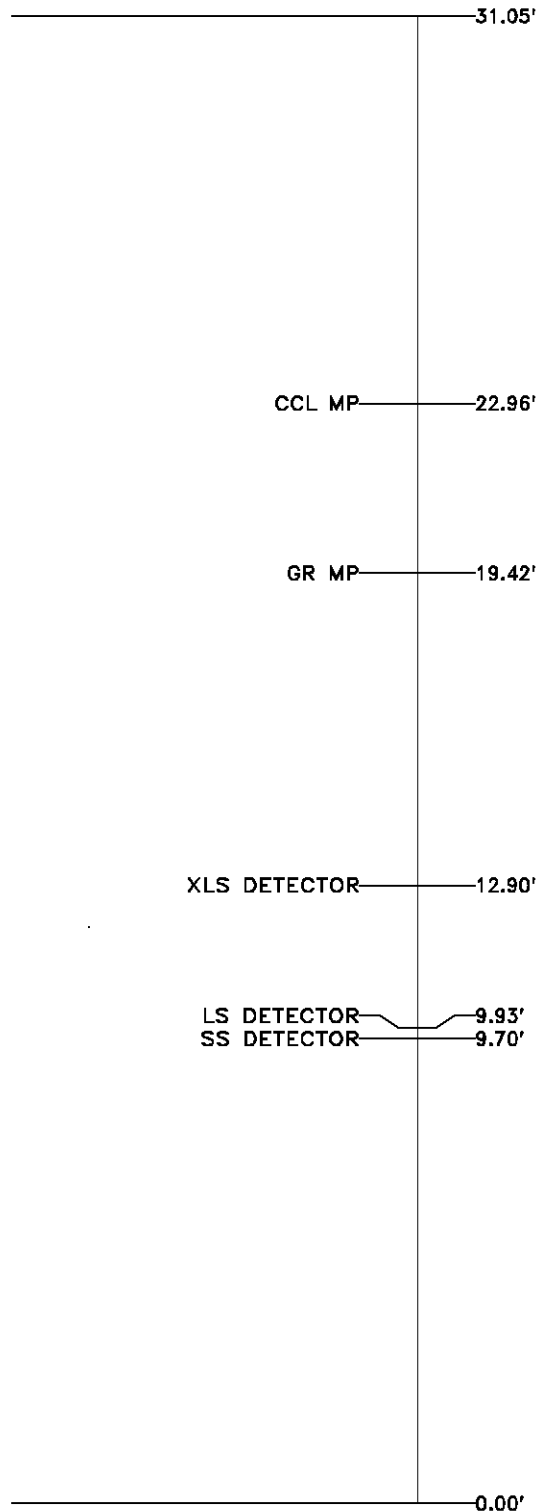
	ISS	RBOR	RIN ISS/ILS	RIN13 ISS/IXS	RICS ISS/CSS	RATO SS/LS	RTWO SS2/LS	RONE CSS/CLS
Raw Data	817093	1.44	4.77	30.94	15.18	10.77	3.83	4.07
		1.42 1.45	3.55 5.52	22.20 32.70	10.99 16.34	10.06 11.10	3.57 3.95	3.76 4.22
Fit Quality %		0.08	0.28	0.17	0.09	0.28	0.28	0.23
Reduced	1382706	1.43	4.78	31.03	15.23	10.73	3.82	4.06
		1.42 1.45	4.33 5.52	27.60 32.70	13.70 16.34	10.06 11.10	3.57 3.95	3.76 4.22

TOOL DIAGRAM

OTA SHORT CABLE HEAD	
PCM POWER SUPPLY	
Series	8250EA
Mnemonic	PCM
Diameter	1.70"
Weight	18.00 lb
Length	3.86'
Temp Rating	350.00 °F
TELEMETRY / CCL	
Series	8248EA
Mnemonic	PCM
Diameter	1.70"
Weight	20.00 lb
Length	4.46'
Measure Point	1.00' CCL MP
Temp Rating	350.00 °F
Press Rating	15000.00 PSI
GAMMA RAY	
Series	8262XA
Mnemonic	GR
Diameter	1.70"
Weight	15.00 lb
Length	3.17'

RESERVOIR PERFORMANCE MONITOR

Series	8281XA
Mnemonic	RPM
Diameter	1.70"
Weight	75.00 lb
Length	18.58'
Measure Point	9.49' SS DETECTOR
Measure Point	9.72' LS DETECTOR
Measure Point	12.69' XLS DETECTOR
Temp Rating	350.00 °F
Press Rating	20000.00 PSI



Total Length: 31.05'
Total Weight: Not Available
Max Diameter: 0' 1.70"



Baker Atlas

Company

WPX ENERGY

Well

WPX ENERGY GM 424-34

Field

GRAND VALLEY

County

GARFIELD

State

COLORADO

Location

SHL: 1980' FSL X 2167' FWL

Elevations

KB 5381.5 ft

File No:

CH075720

API No:

05045193080000

34-8S-96W

CASE

BHL: 647' FSL X 1488' FWL (SESW)

DF

GM 23-34 PAD

GL 5355.5 ft

NABORS 574

SEC 34

TWP 6S

RGE 96