


<div></div> <div>BAKER HUGHES</div>		<div>RESERVOIR PERFORMANCE MONITOR</div>	
Baker Atlas			
File No: CH075920	Company Well	WPX ENERGY STRAIT SG 431-22	
API No: 05045217480000	Field County	GRAND VALLEY GARFIELD	
		State	COLORADO
22 7S 96W SG 42-22 PAD CYCLONE 17	Location SHL: 1489' FNL x 293' FEL BHL: 893' FNL x 2198' FEL (NWNE) SEC 22 TWP 7S RGE 96W	Other Services BOND LOG	
Permanent Datum Log Measured From Drill Measured From	GL KB KELLY BUSHING	Elevation 5222 ft Above P. D.	Elevations KB 5244 ft DF GL 5222 ft
Date	19/AUG/13		
Run	ONE		
Service Order	624404		
Depth Driller	6023 ft		
Depth Logger	6004 ft		
Bottom Logged Interval	5994 ft		
Top Logged Interval	2897 ft		
Time Started	0600		
Time Finished	1030		
Operator Rig Time	4.5 HRS		
Type of Fluid in Hole	WATER		
Fluid Density	NA		
Salinity	NA		
Fluid Level	60 ft		
Logged Cement Top	NA		
Wellhead Pressure	0 psi		
Maximum Hole Deviation	NA		
Nominal Logging Speed	10 fpm		
Maximum Recorded Temperature	197 degF		
Reference Log	BAKER HUGHES BOND LOG		
Reference Log Date	18/AUG/13		
Equipment No.	Location	4271 GRAND JCT	
Recorded By	FLOYD RENEAU		
Witnessed By	DUSTIN WELSH		

- FOLD HERE

In making interpretations of logs, our employees will give the customer the benefit of their best judgement. But since all interpretations are opinions based on inferences from electrical or other measurements, we cannot, and we do not guarantee the accuracy or correctness of any interpretation. We shall not be liable or responsible for any loss, cost, damages, or expenses whatsoever incurred or sustained by the customer resulting from any interpretation made by any of our employees.

Borehole Record		
Bit Size	From	To
13.5 in	0 ft	1214 ft
8.75 in	1214 ft	6023 ft

Casing Record				
Size	Weight	Grade	From	To
9.625 in			0 ft	1214 ft
4.5 in	11.6 lbm/ft	I-80	0 ft	6023 ft

Remarks
All data on this log is shifted and depth matched using the Gamma Ray curve to the Baker Hughes bond log dated 8/18/2013 at the client's request.
The amount of linear shift is -1 foot.
Logged in PNC-3D mode.
BHT = 197°F
SJ = 3608'-3632

Equipment Data					
Run	Trip	Tool	Series Number	Serial Number	Position
1	1	RPM	8281FA	10307727	FREE
1	1	RPM	8281PA	10585555	FREE
1	1	RPM	8281EA	10303640	FREE
1	1	GR	8262XY	10485470	FREE
1	1	TEL/CCL	8248ED	10296408	FREE
1	1	PCM	8250EA	10397894	FREE

MAIN SECTION
PNC 3-D MODE

SPL PROCESSING

MEASUREMENT TYPE	PARAMETER	VALUE	UNITS	TOP	BOTTOM
PNC Porosity	Borehole	Cased		2869.750	6015.937
PNC Porosity	Borehole Size	8.750	inch	2869.750	6015.937
PNC Porosity	Casing Size	4.500	inch	2869.750	6015.937
PNC Porosity	Gas Filled	Non Gas Filled		2869.750	6015.937
PNC Porosity	Matrix	Sandstone		2869.750	6015.937

DEPTH OFFSETS
(for Acquired Curves)

SERIES	DEPTH OFFSET	ACQUIRED CURVES					
8248ED	-15.320	FLTM					
8248ED	-13.320	CCL	CHV				
8262XY	-10.189	GR4					
8281XA	-0.662	HVC3Q0	SEQ3	AMA3	AML3	BKX	CXS
		CPT3Q0	CPT3Q2	CPT3Q3	CPT3Q4	ET3	IXS
		MCS3	MCS3Q0	QCAL3	RGN3	RICX	SDA3
		SDL3	SGA3	SGL3	STA3	XS	ASPEC3
		AMB3	AMF3	CHF3	IXSC	IXSN	RATO23
		FLUXO	FLUXO2	FLUXO3	FLUXO4	GRD2	GRD3

RICXC

RIN13C

RIN23

RIN23C

SD3D

SG3D

SGB3

SGF3

WDTH3

CXSR

IXSR

XSR

RICXR

8281XA

-0.250

HVC2Q0

SEQ2

AMA2

AMB2

AMF2

AML2

BKL

CHF2

CLS

CPT2Q0

CPT2Q2

CPT2Q3

CPT2Q4

ET2

ILS

LS

MCS2

MCS2Q0

QCAL2

RGN2

RICL

RONE23

RTWO23

SDA2

SDL2

SGA2

SGB2

SGF2

SGK2

SGL2

STA2

ASPEC2

ILSC

ILSN

WDTH2

RICLC

CLSR

ILSR

LSR

RICLR

8281XA

0.000

CPRS

HVC1Q0

MV

SEQ

SEQ1

AMA1

AMB1

AME1

AMF1

AML1

BKS

CHF1

CSS

CORB

CORF

CPT1Q0

CPT1Q2

CPT1Q2A

CPT1Q2B

CPT1Q2C

CPT1Q3

CPT1Q4

CPT1Q5

ET1

G1

G2

GE1S

GE2S

ISS

MCS1

MCS1Q0

QA1

QCAL1

QM1

RATO

RATO13

RBOR

RGN1

RICS

RIN

RONE

RPOR

RTWO

RIN13

RONE13

RTWO13

SALB

SC1

SDA1

SDL1

SGA1

SGB1

SGBC

SGE1

SGF1

SGFC

SGK1

SGL1

SS

SS2

STA1

PD1S

PD2S

PD3S

MD1S

MD2S

MD3S

DG1S

DG2S

DG3S

PD1M

PD2M

PD3M

MD1M

MD2M

MD3M

DG1M

DG2M

DG3M

MVS

MA

MVM

FILV

IAM

TA

PVM

PVS

IAS

SSTAT

QPD1

QPD2

QPD3

QMD1

QMD2

QMD3

QDG1

QDG2

QDG3

QMA

QTA

QFILV

QMV

QPV

QIA

DERR

DCNT

QPK1

QSA1

PKS1

ASPEC1

H0C

FE2XC

ISSC

RINC

ISSN

RDEN

WDTH1

RICSC

CSSR

G1R

G2R

ISSR

SSR

SS2R

RATOR

RATO13R

RBORR

RICSR

RINR

RIN13R

RONER

RPORR

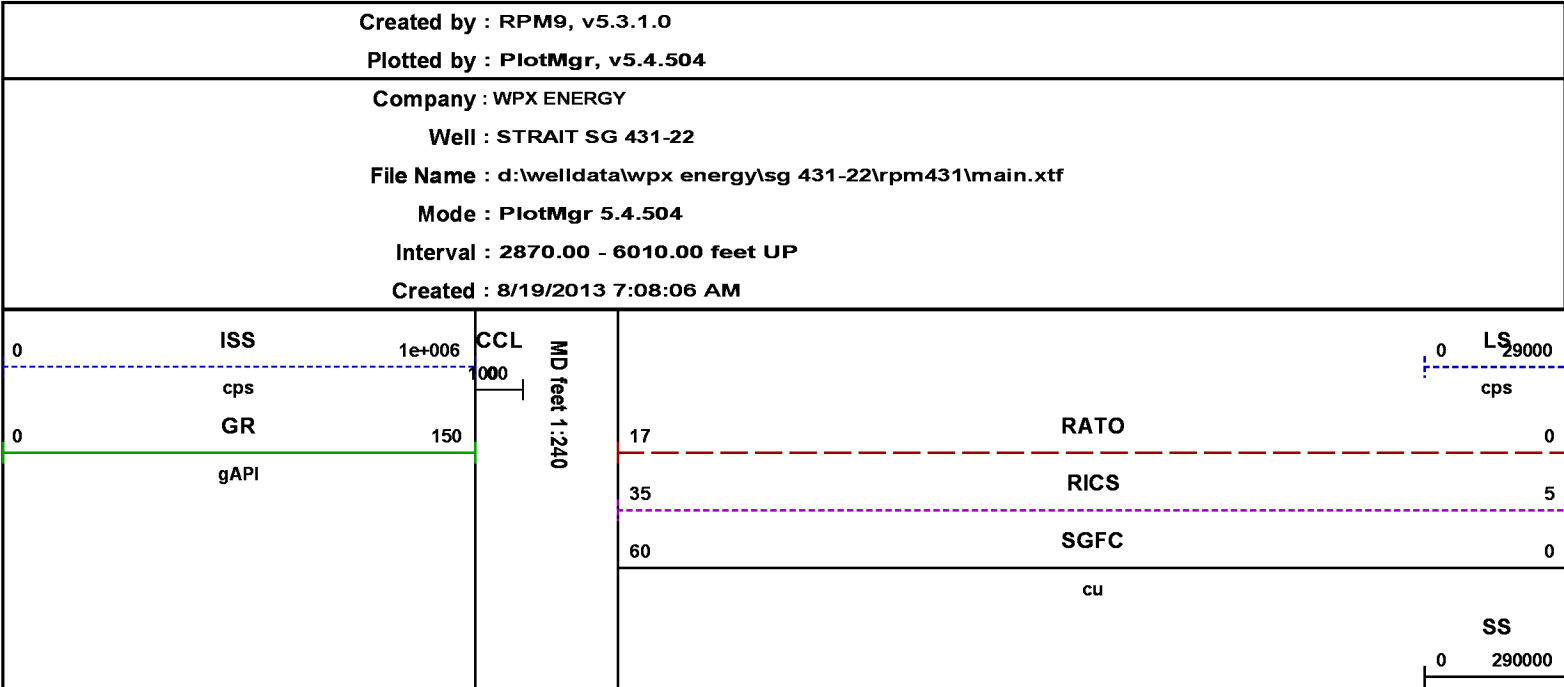
RTWOR

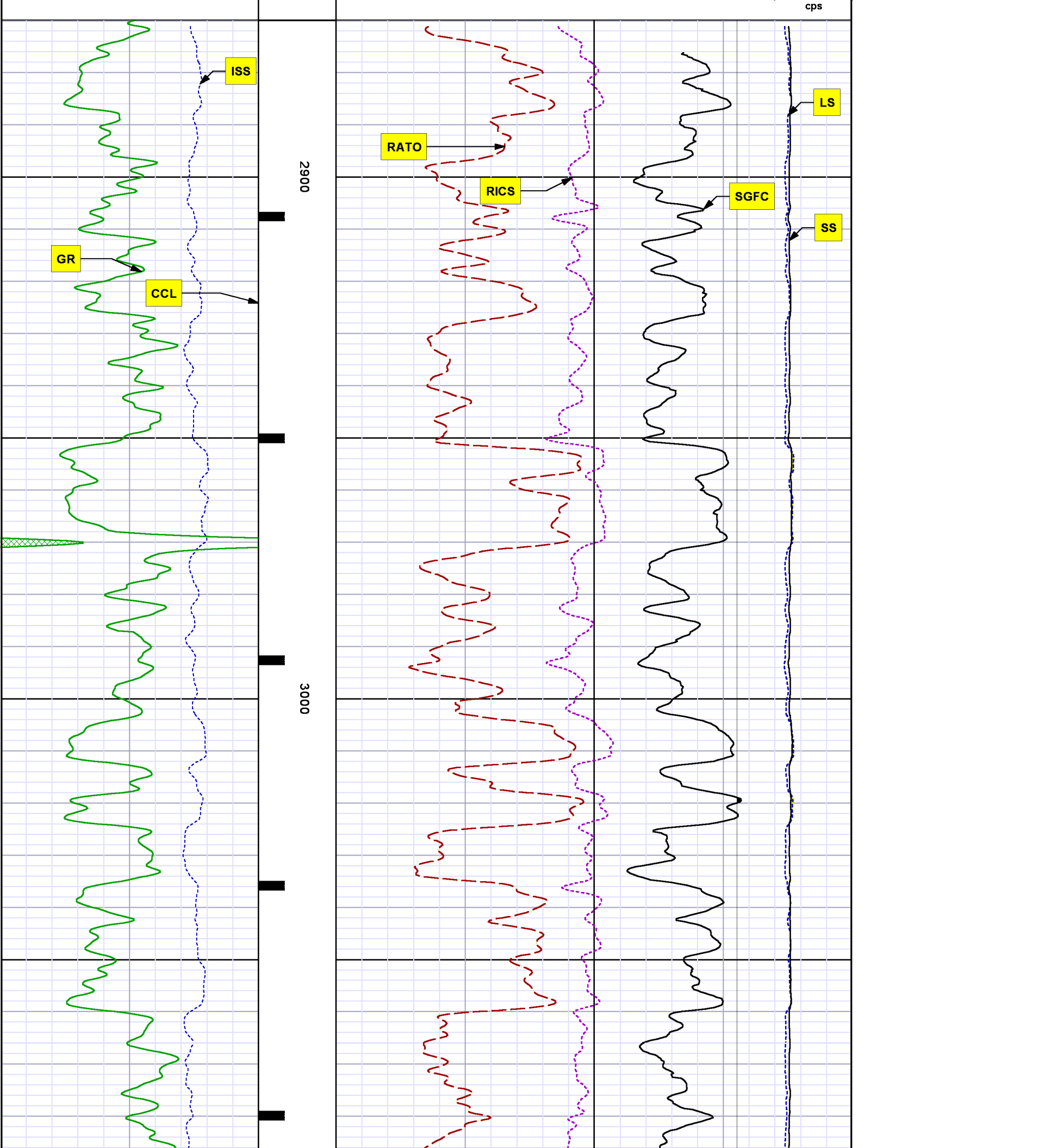
SYSTEM

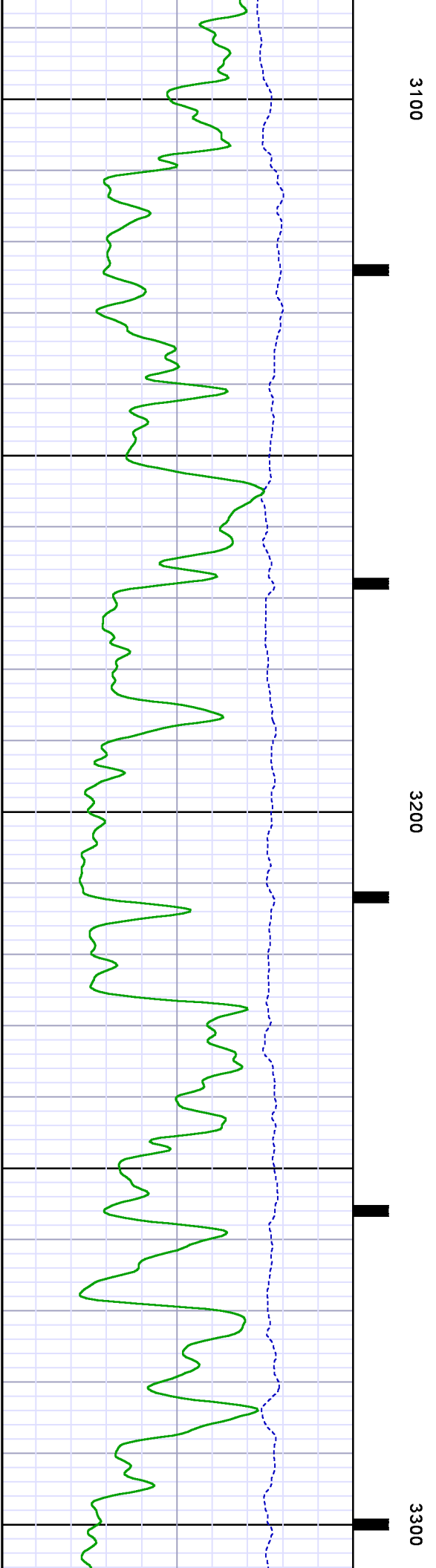
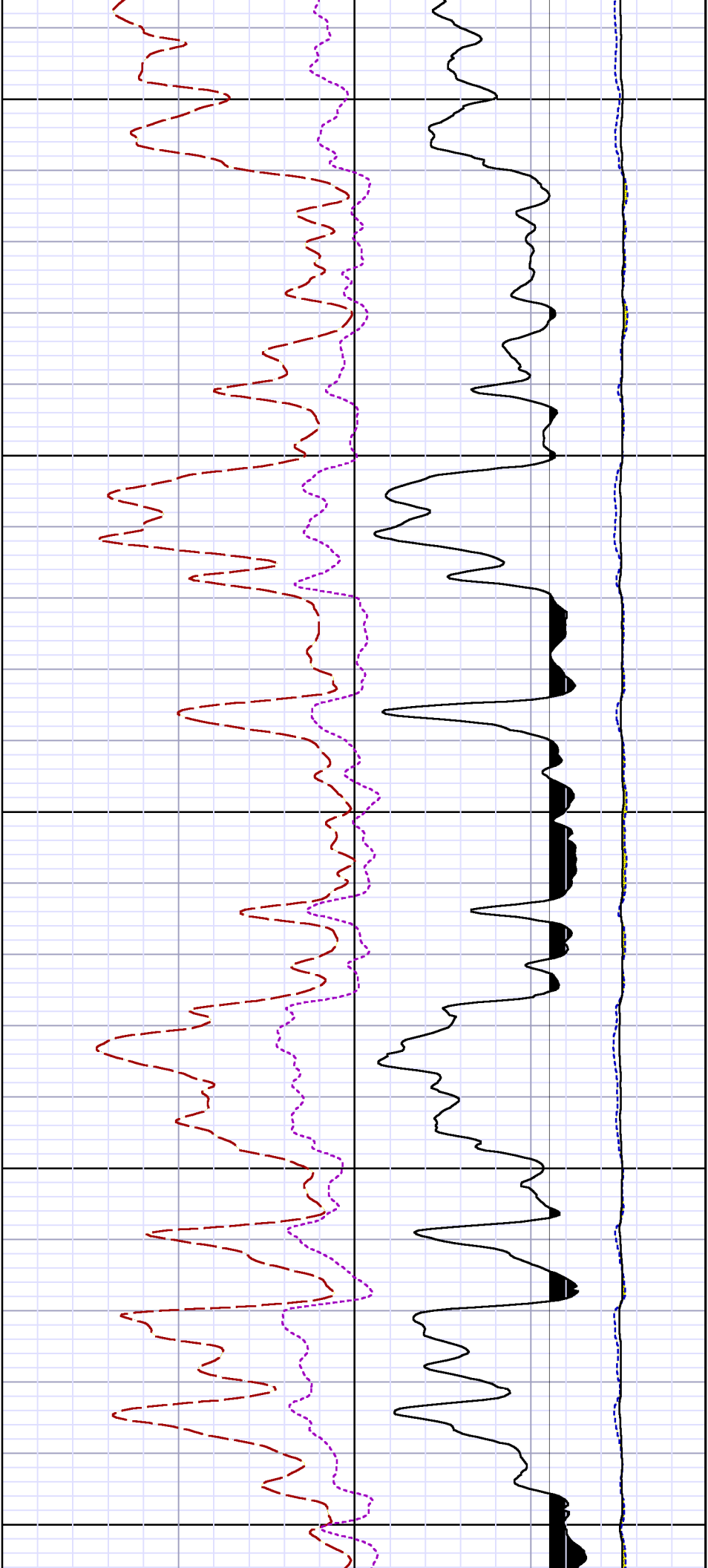
0.000

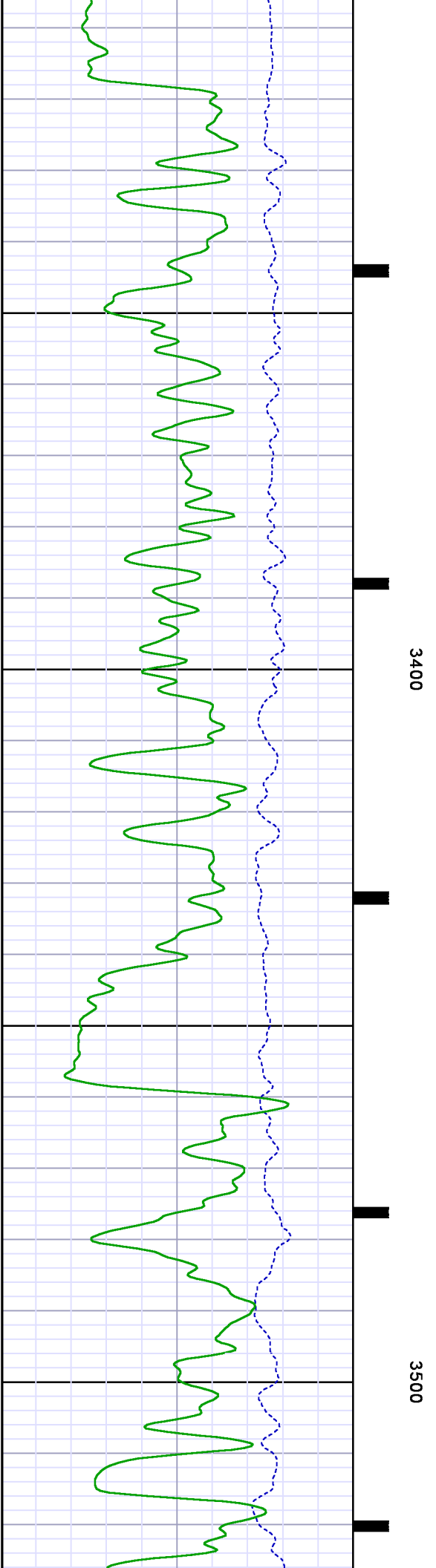
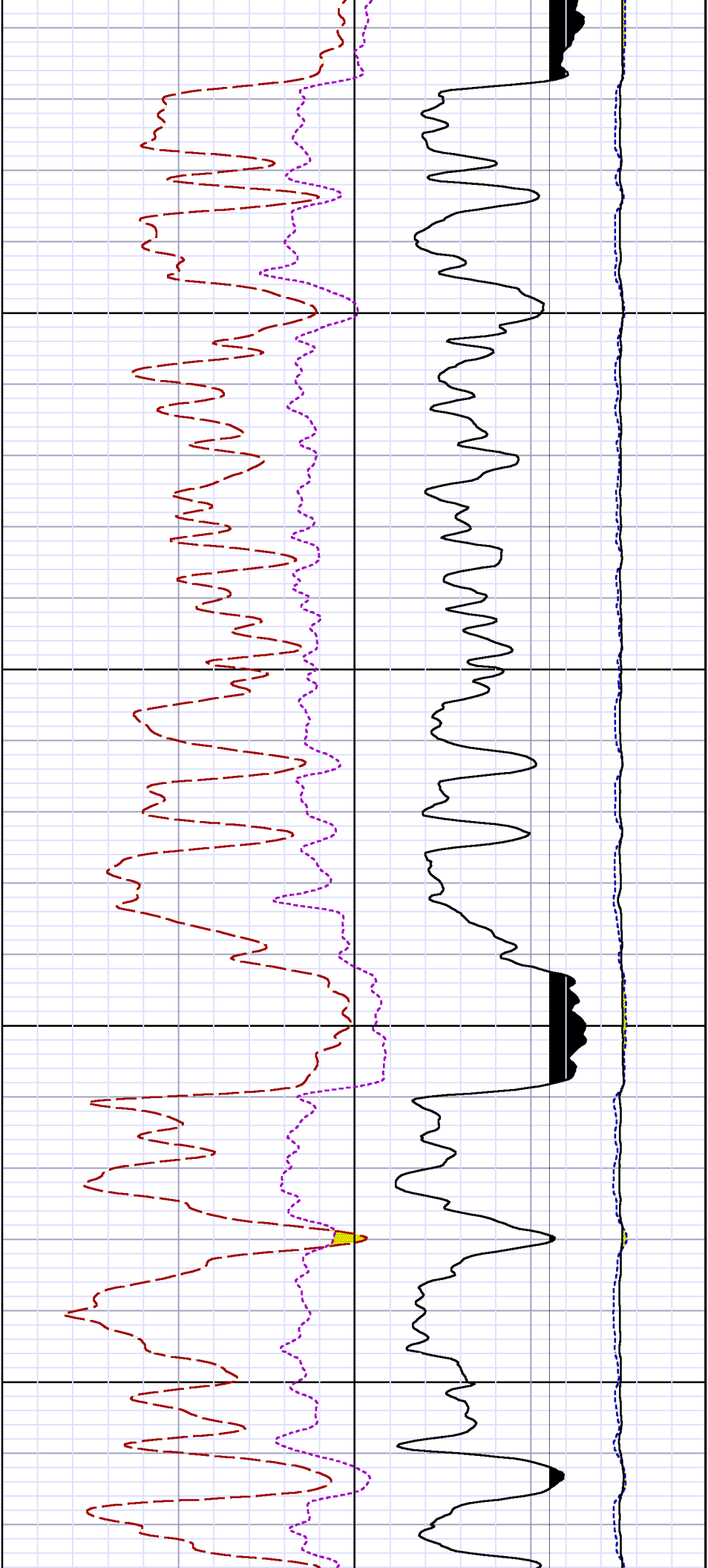
TEN

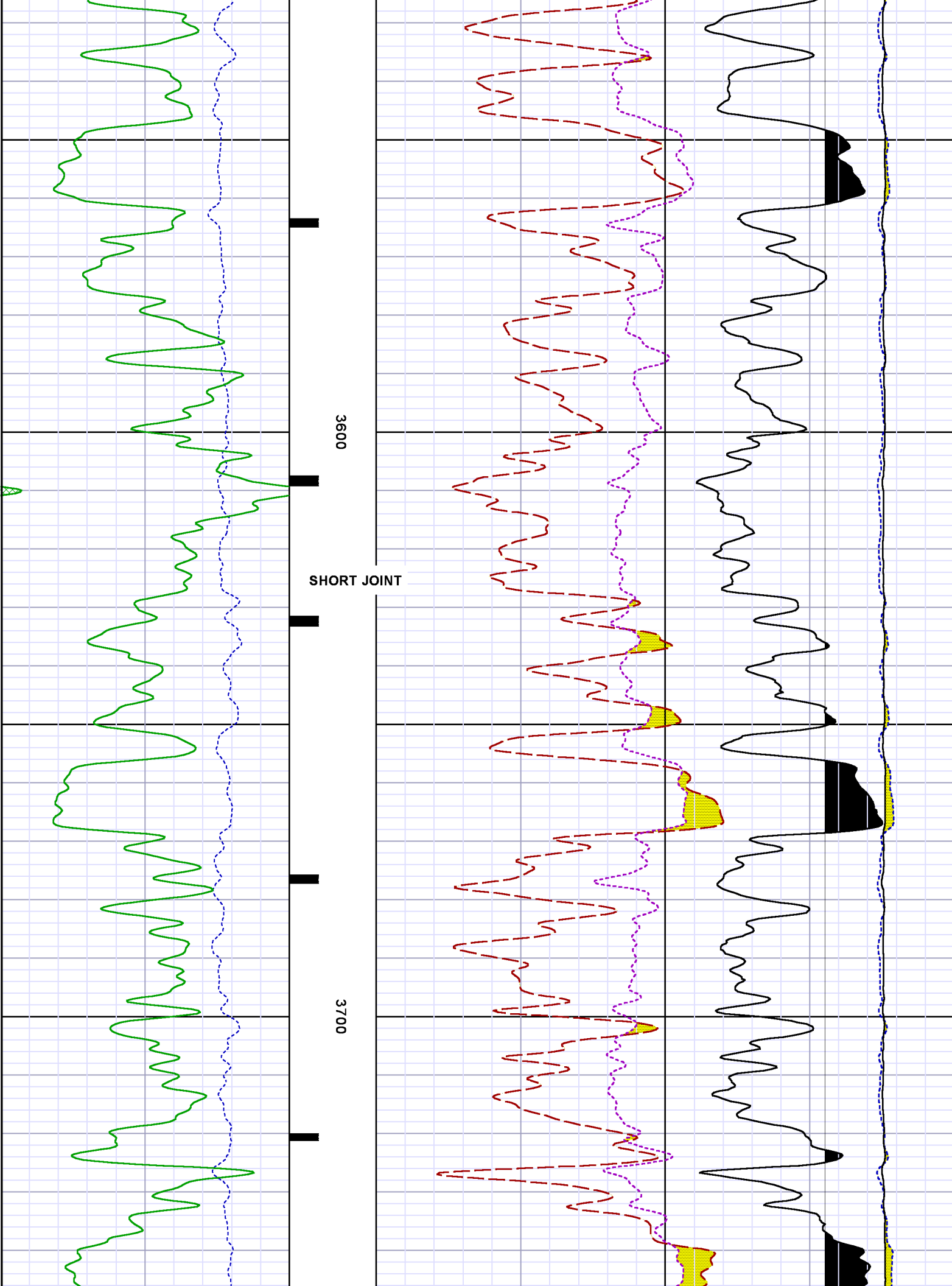
TTEN

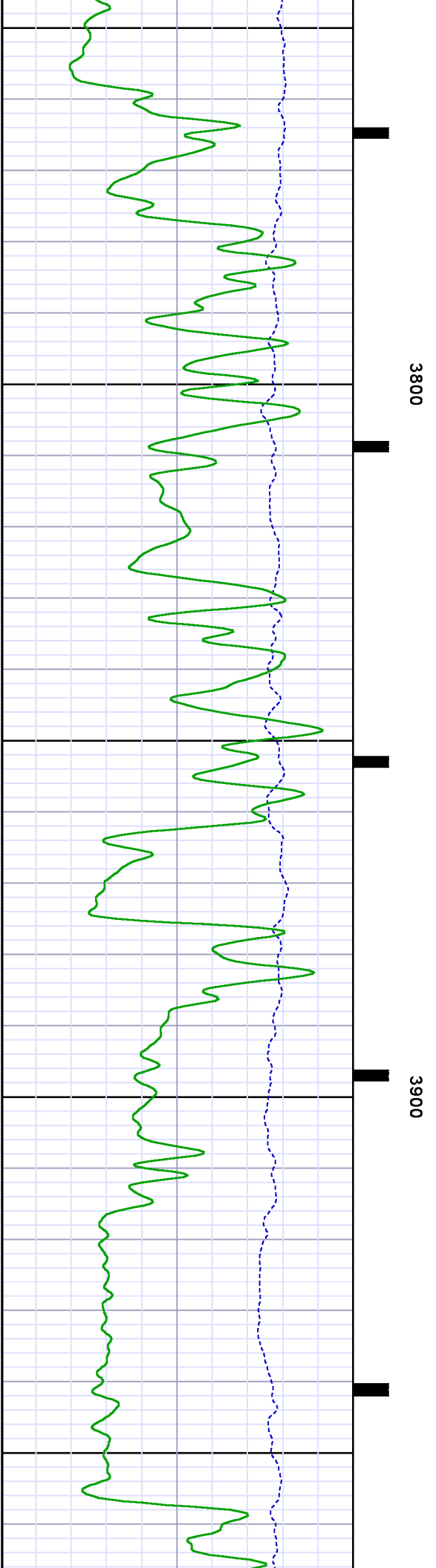
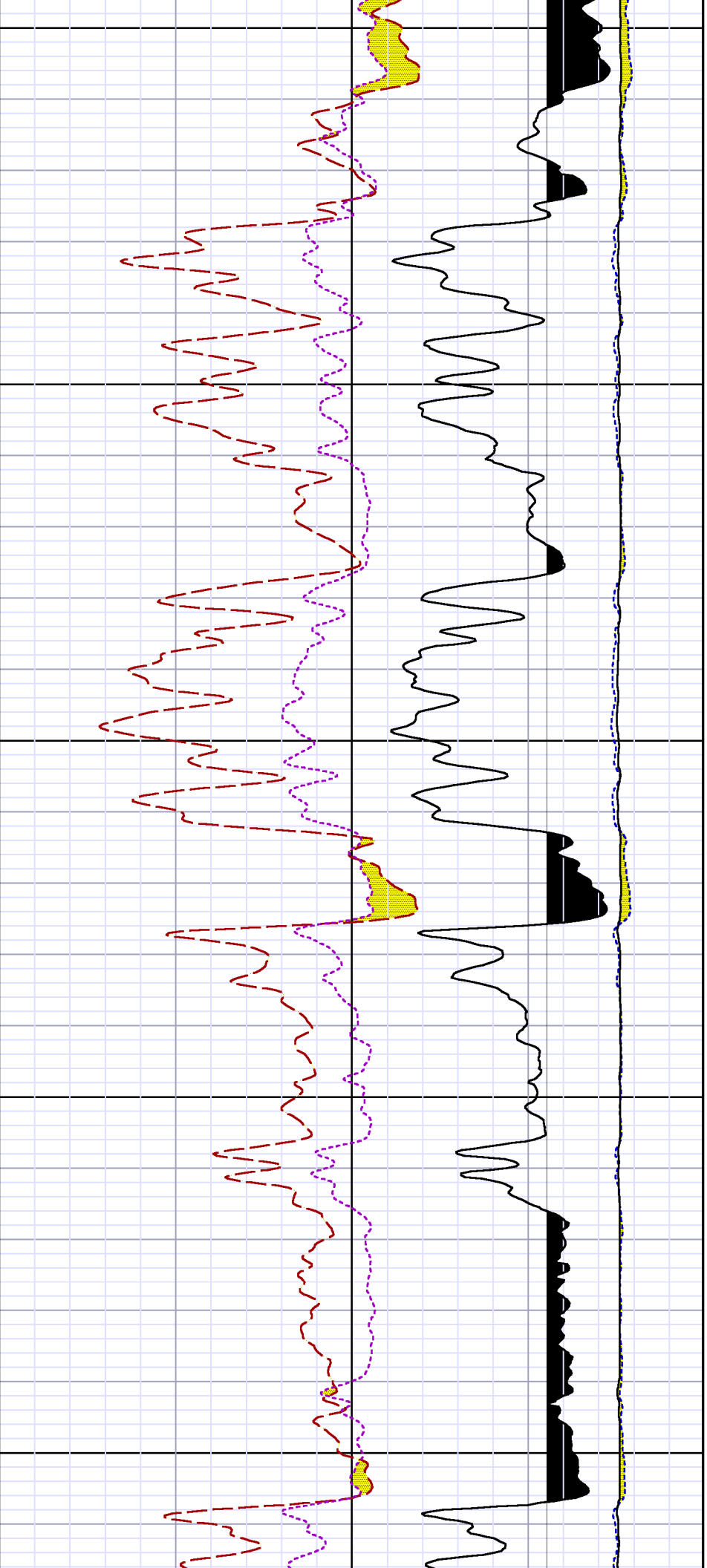


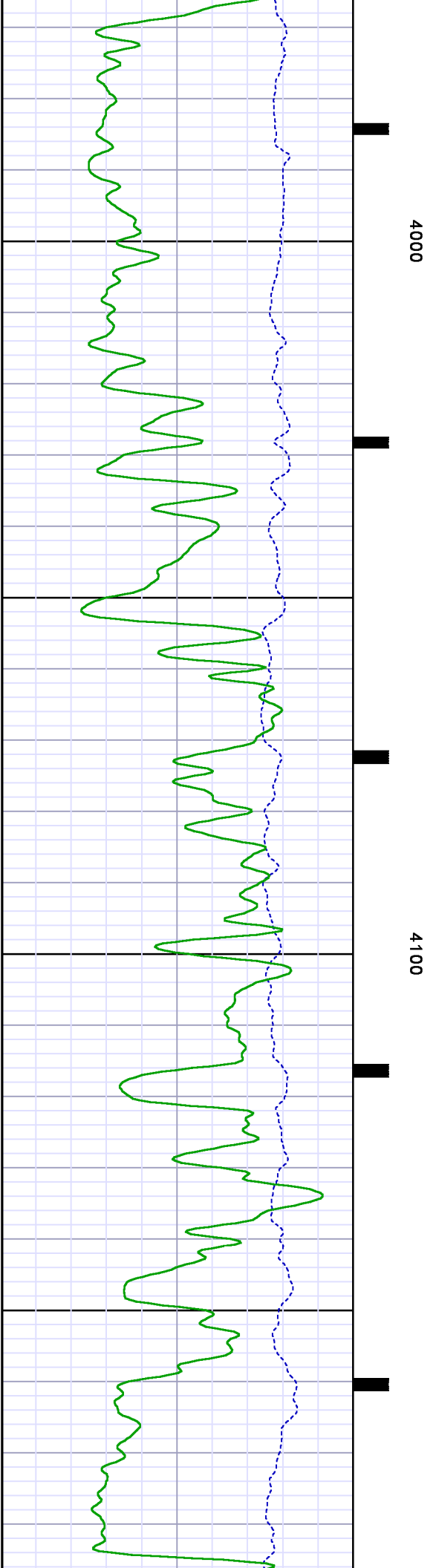
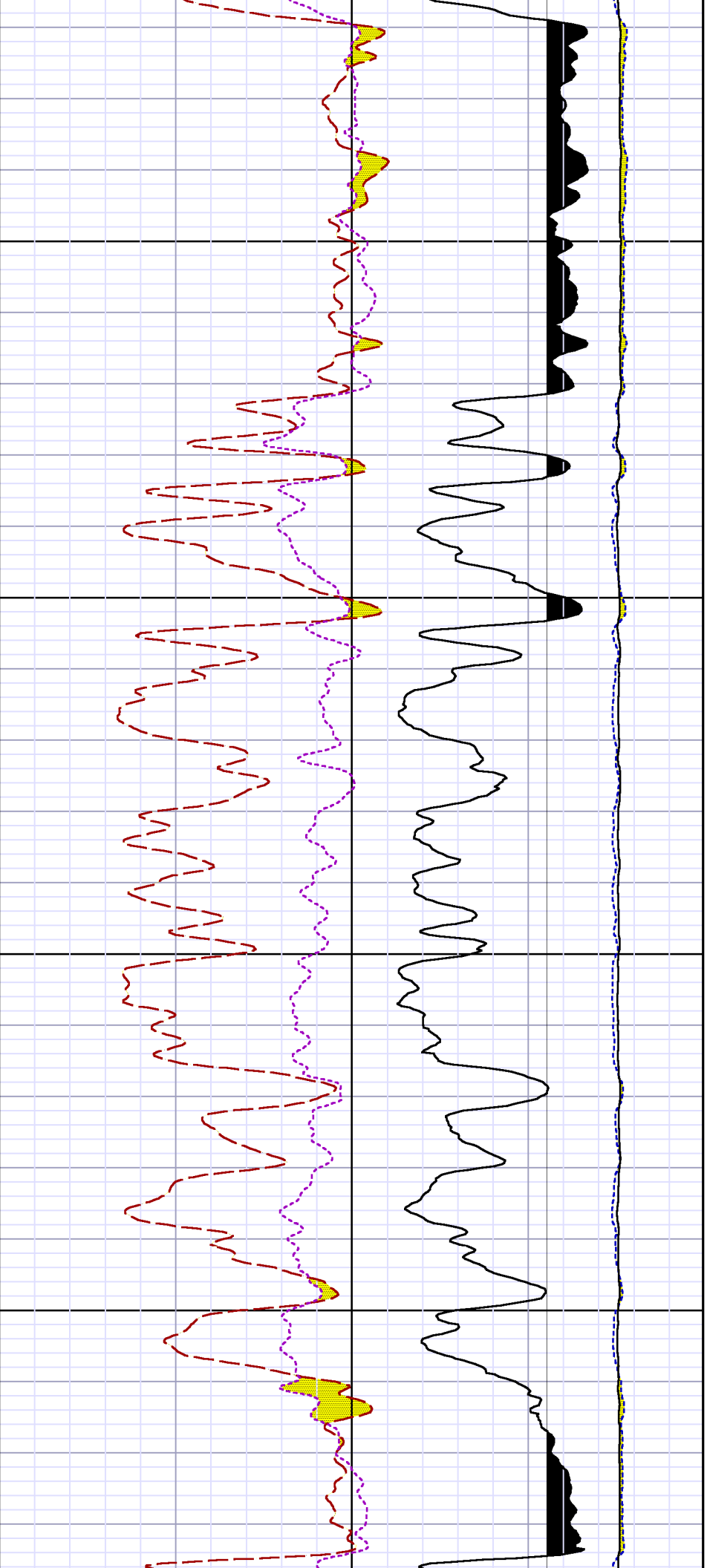


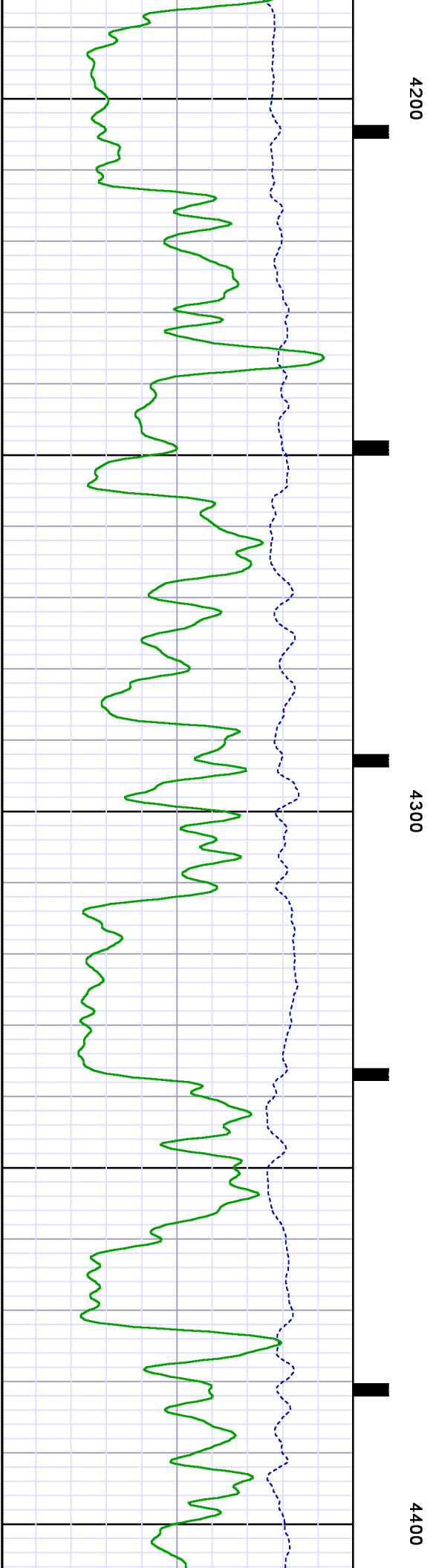
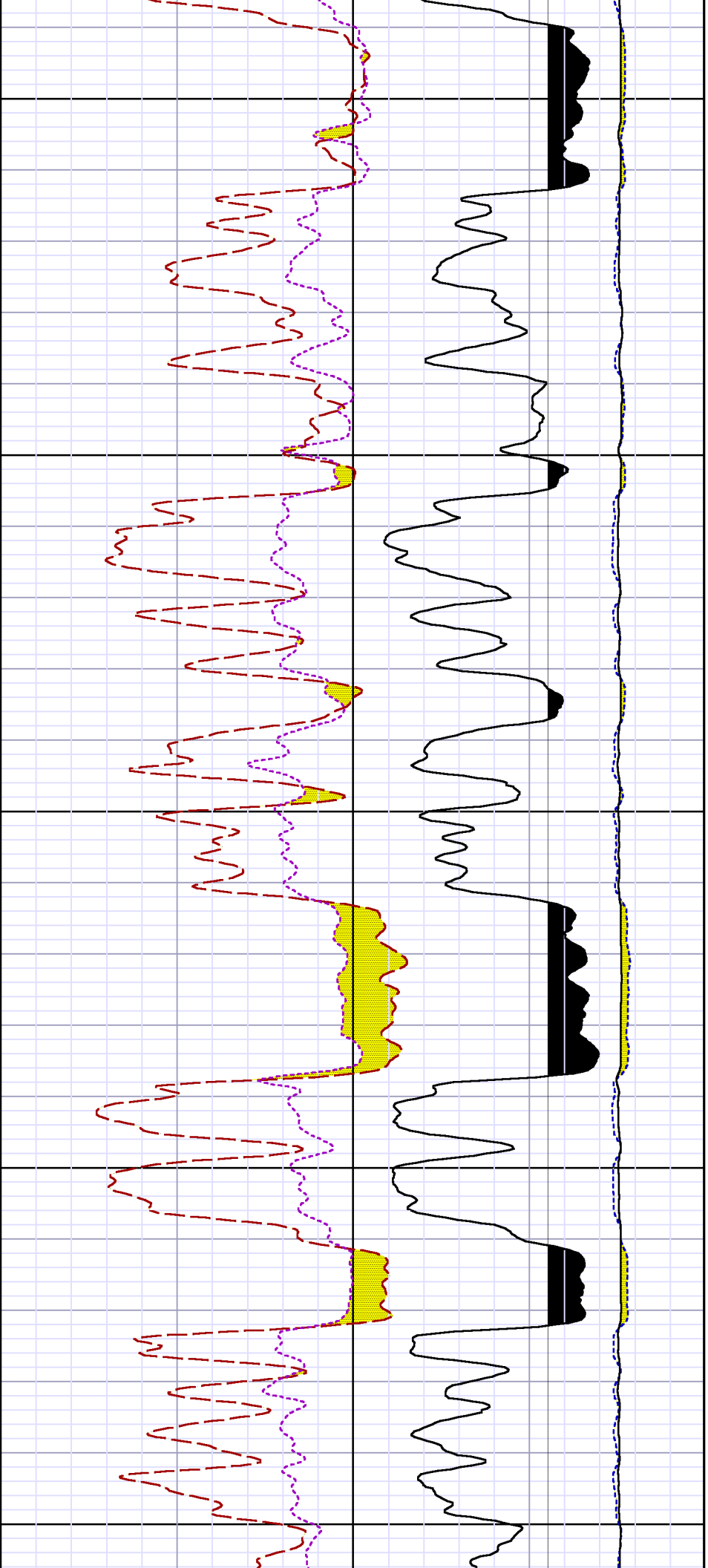


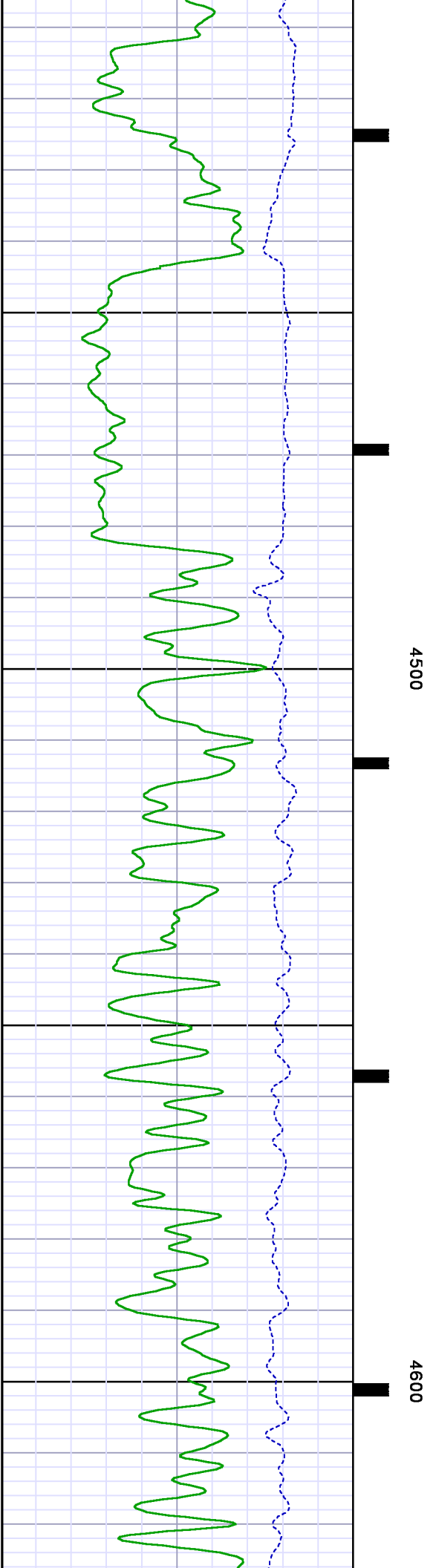
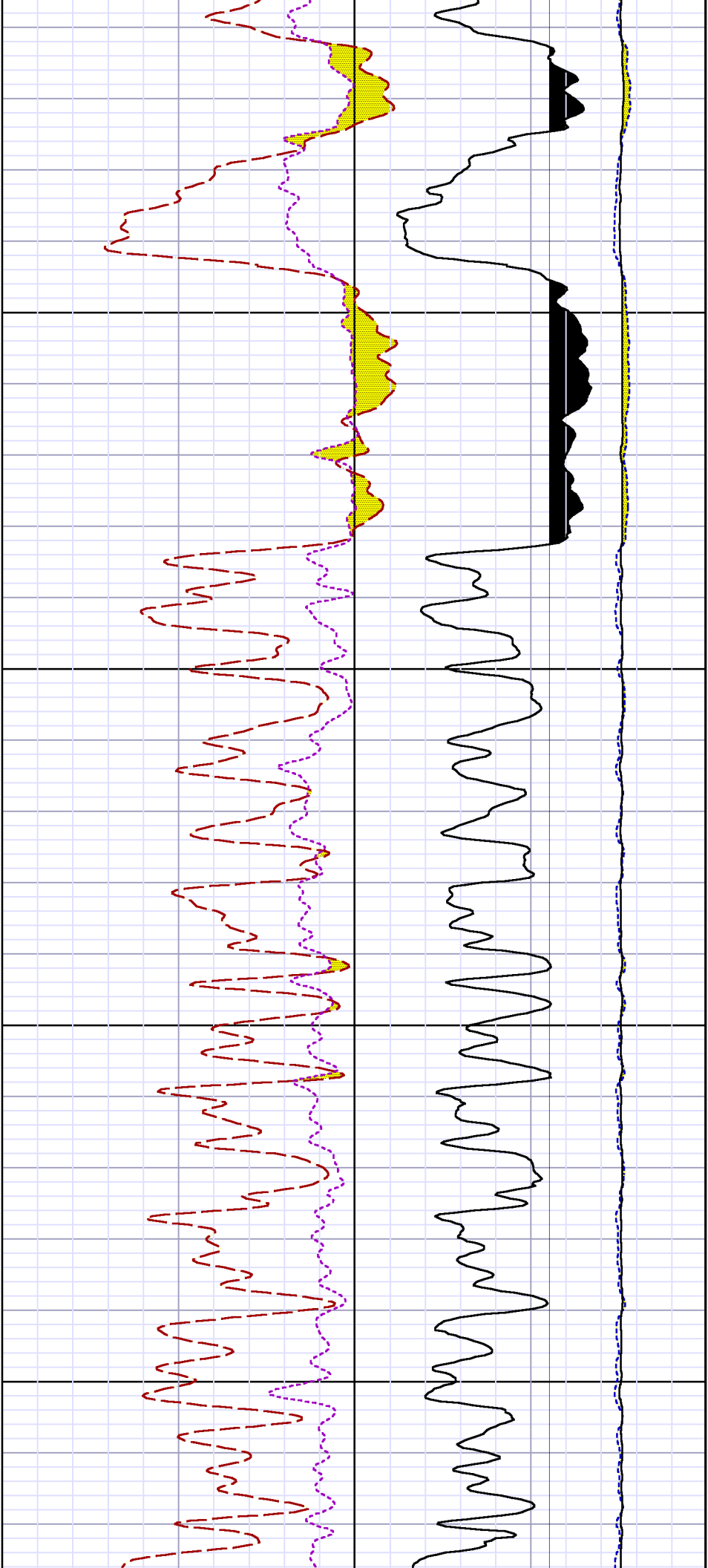


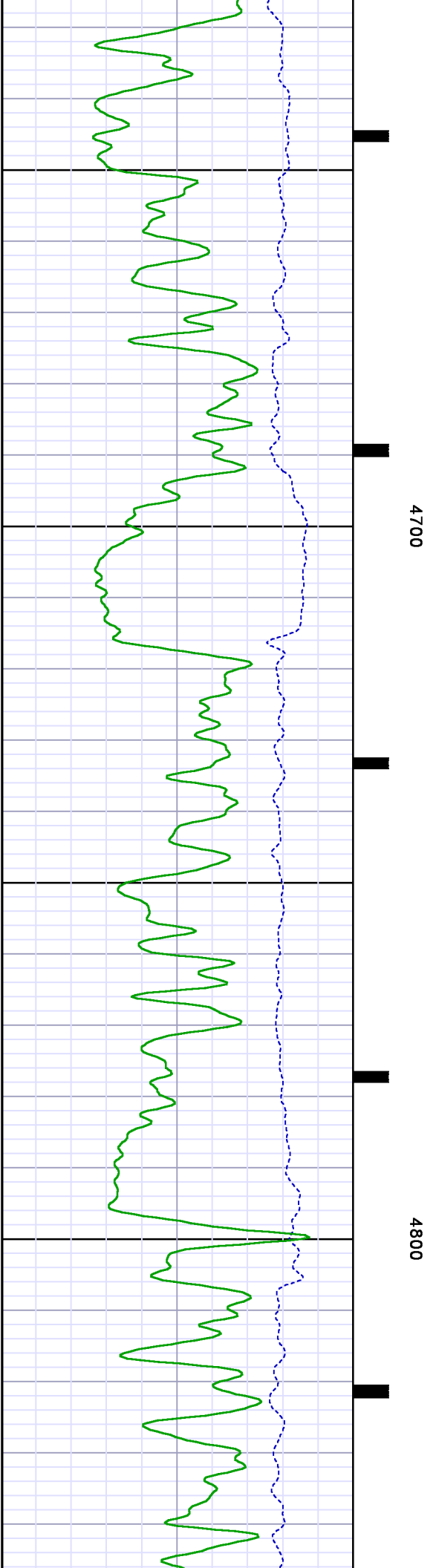
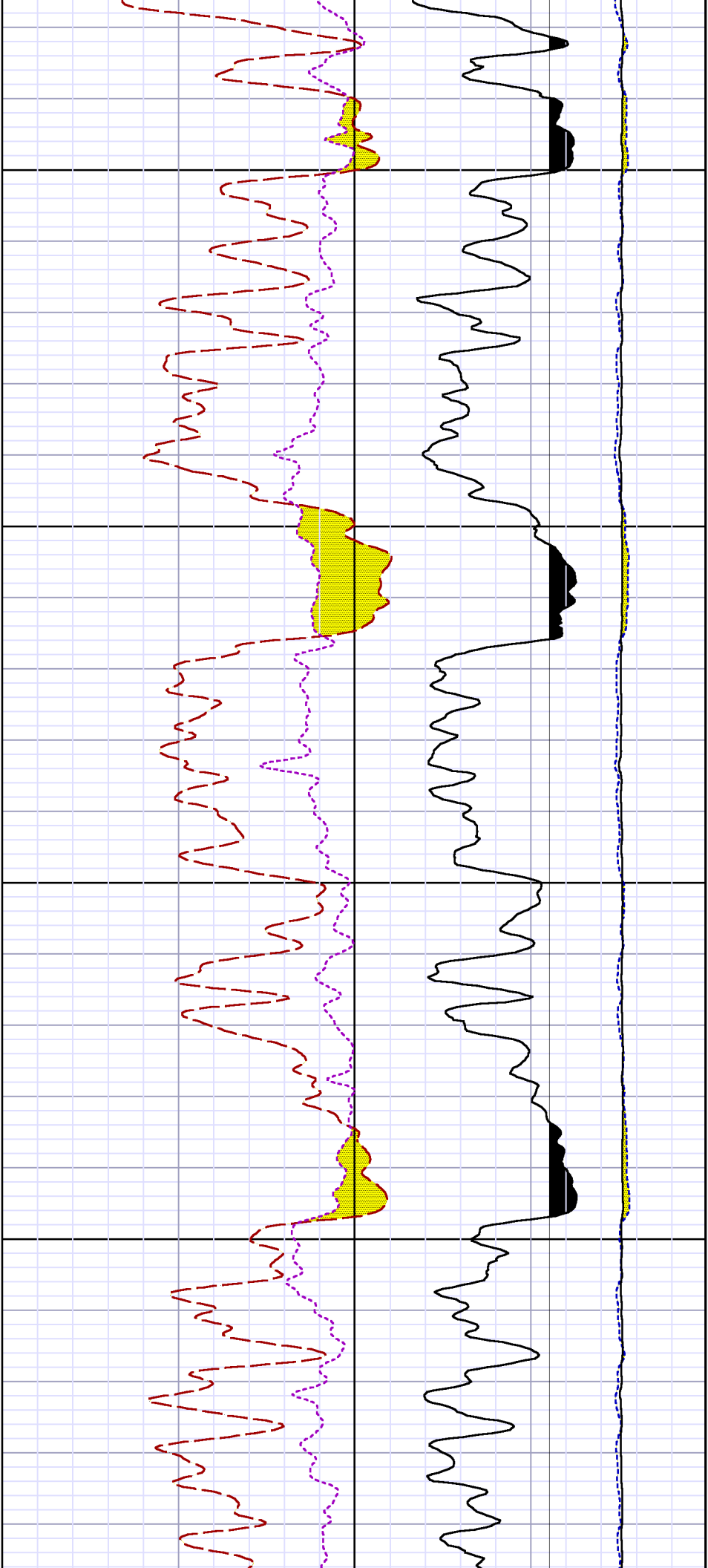


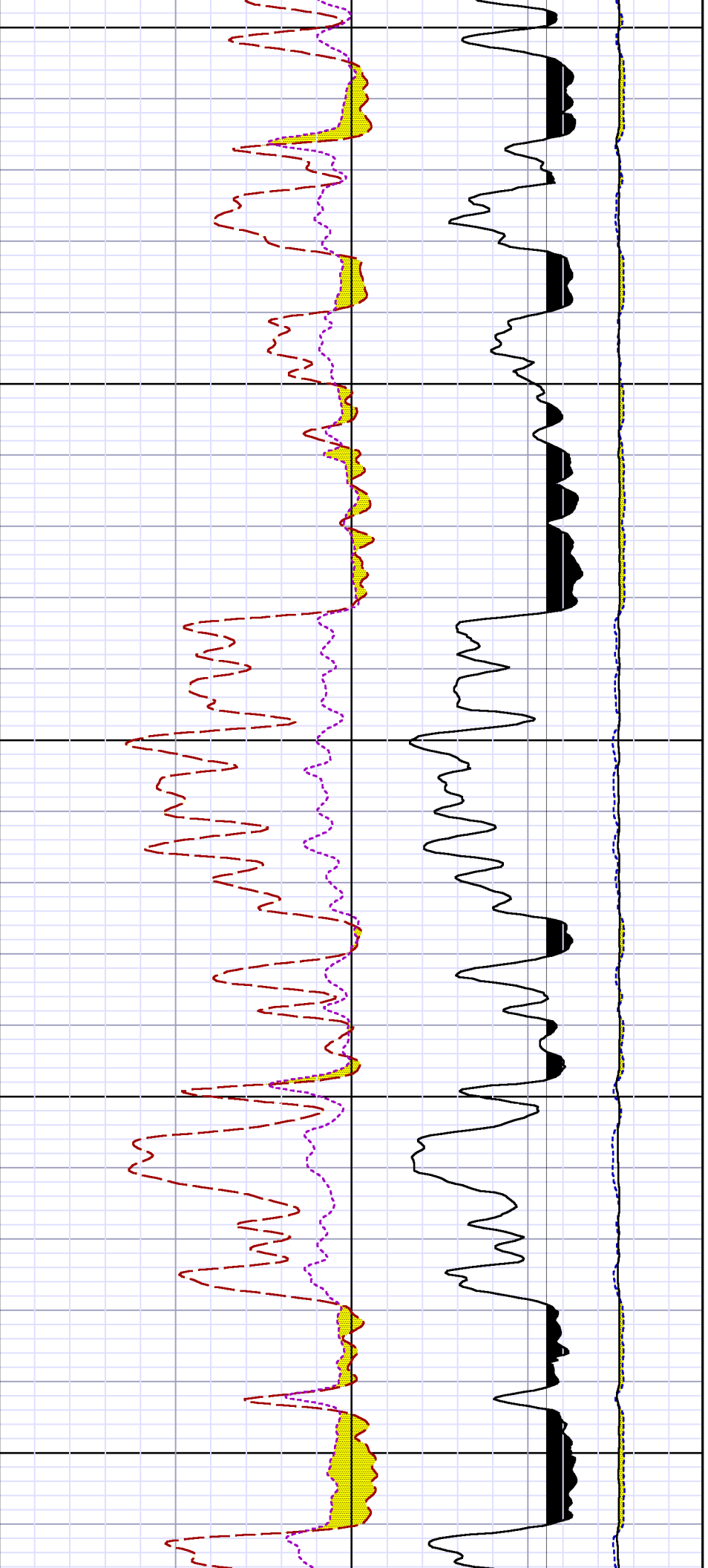






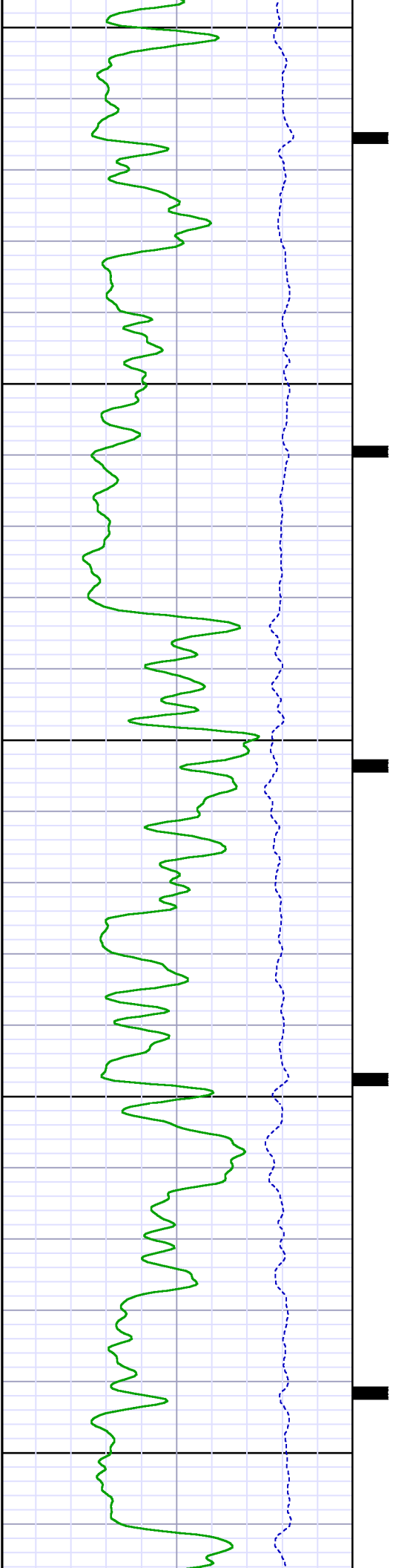


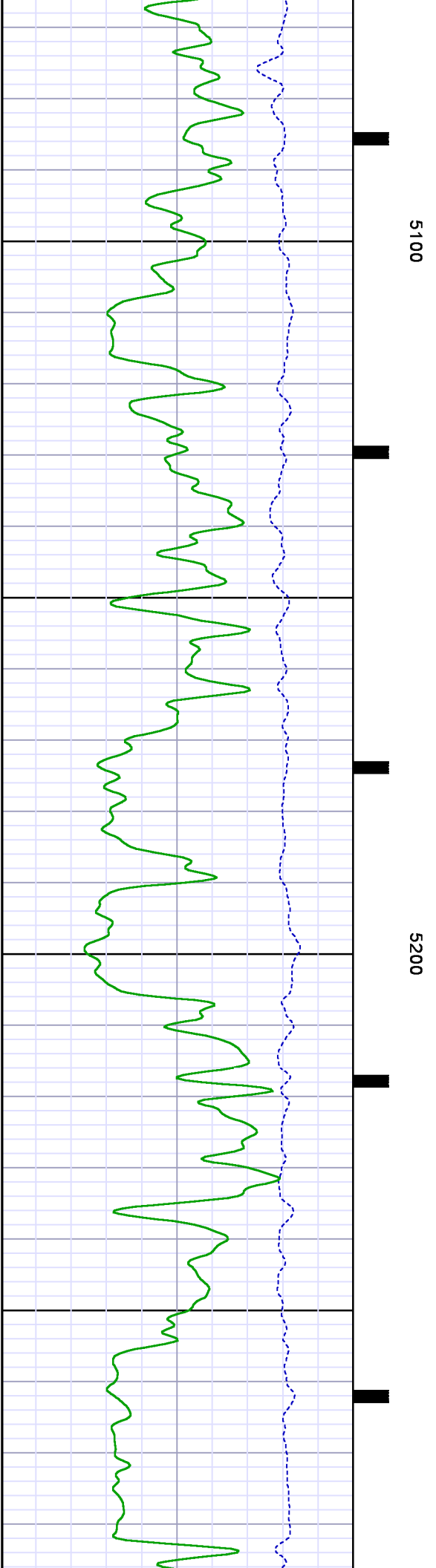
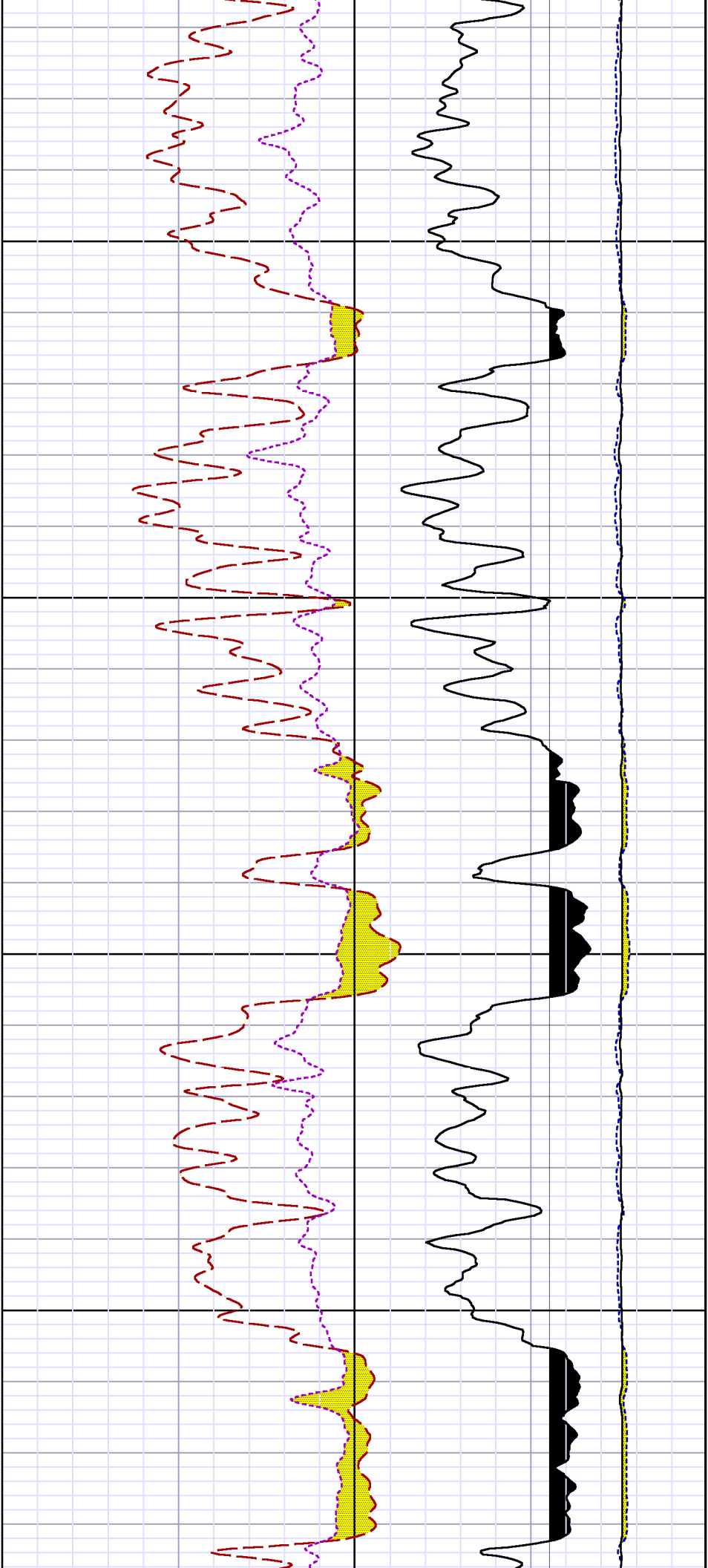


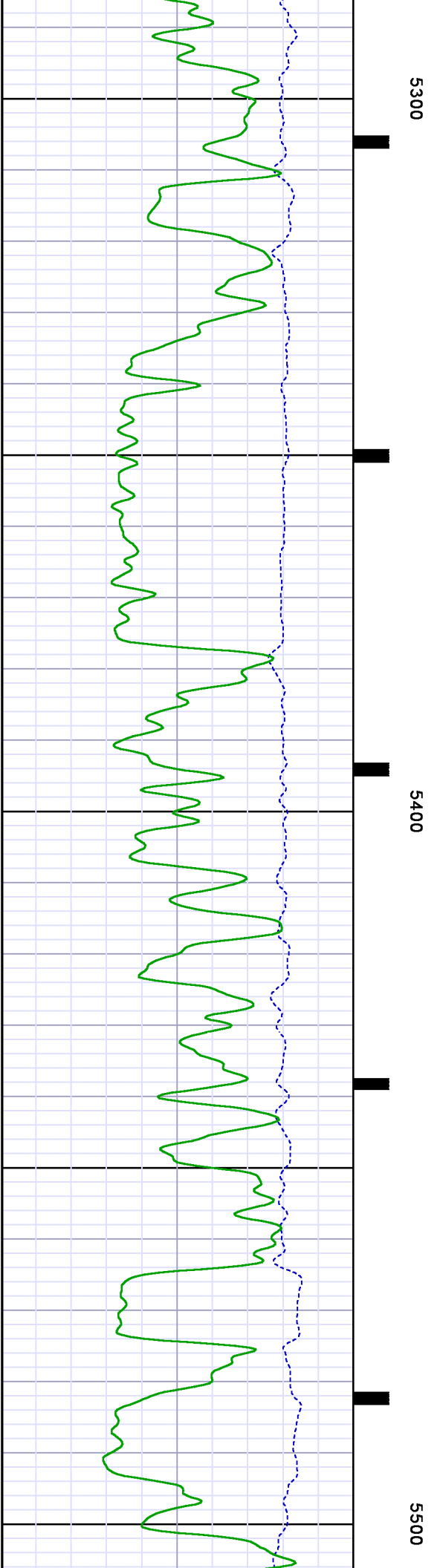
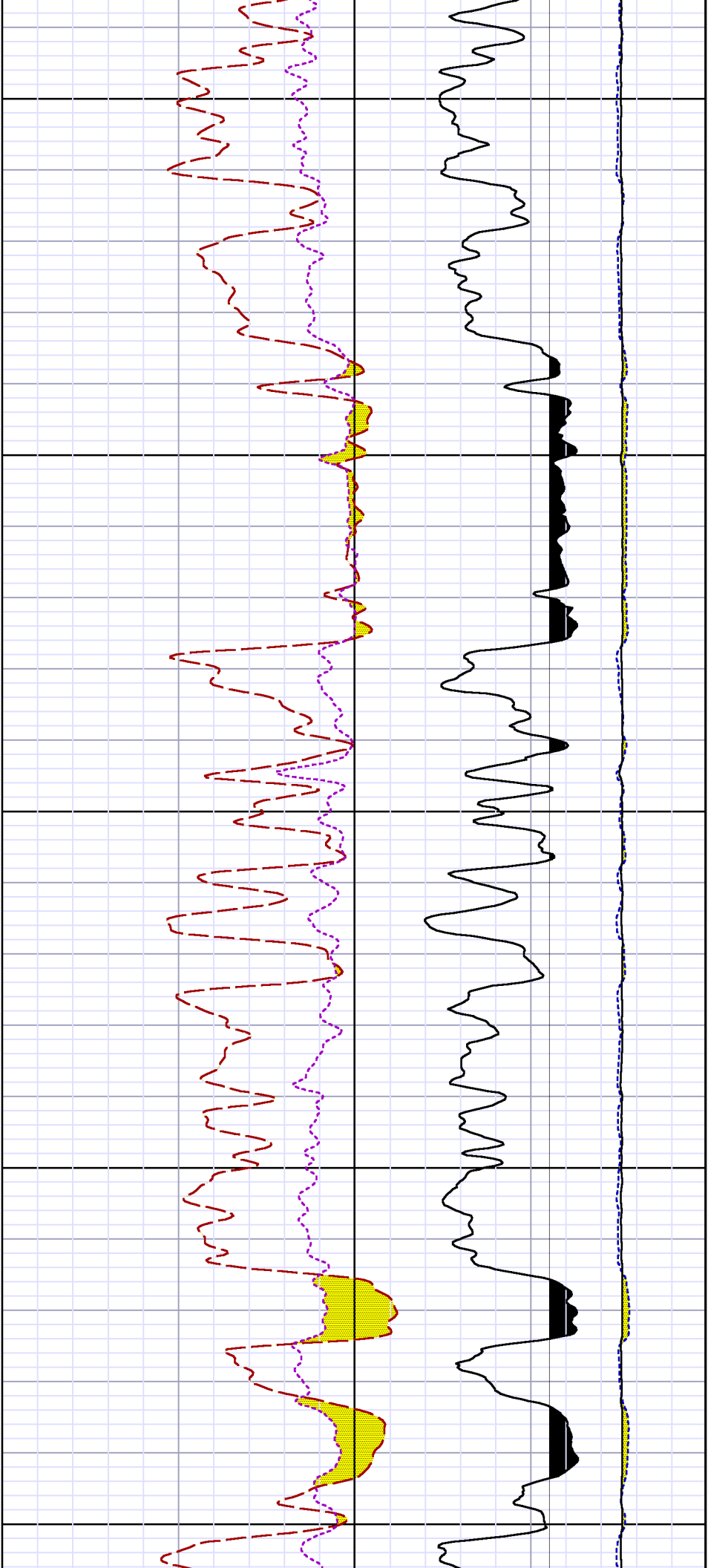


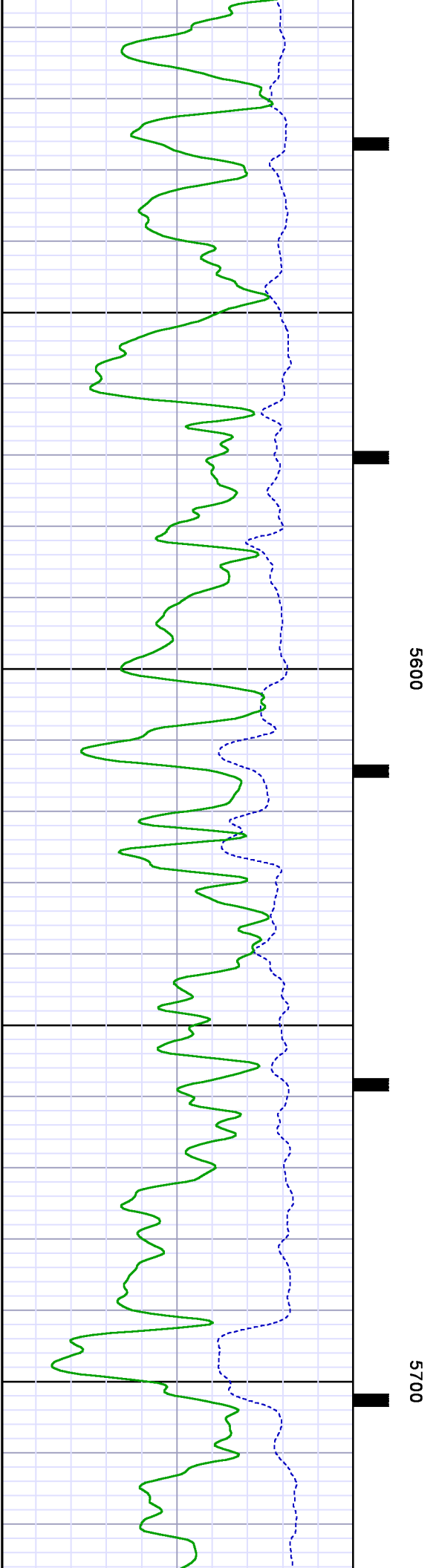
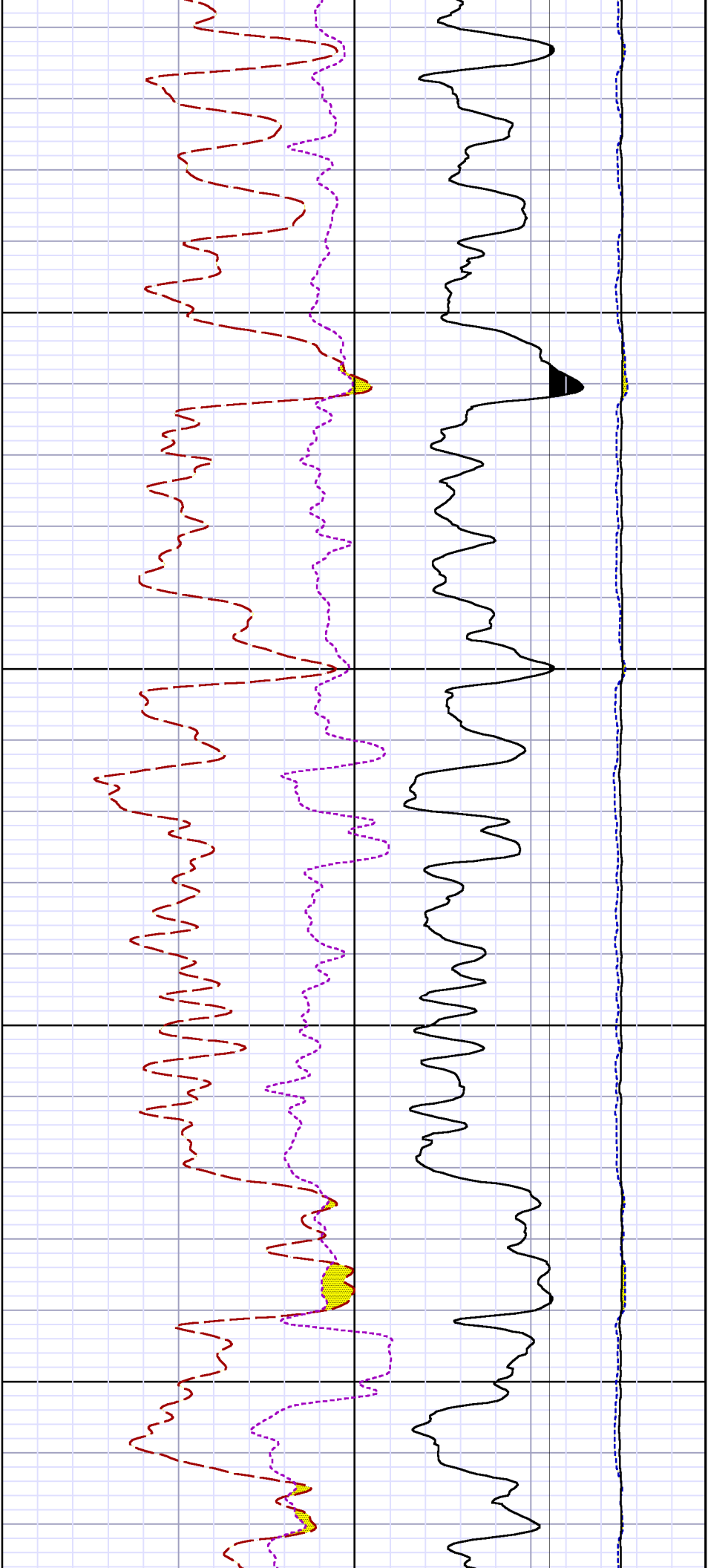
4900

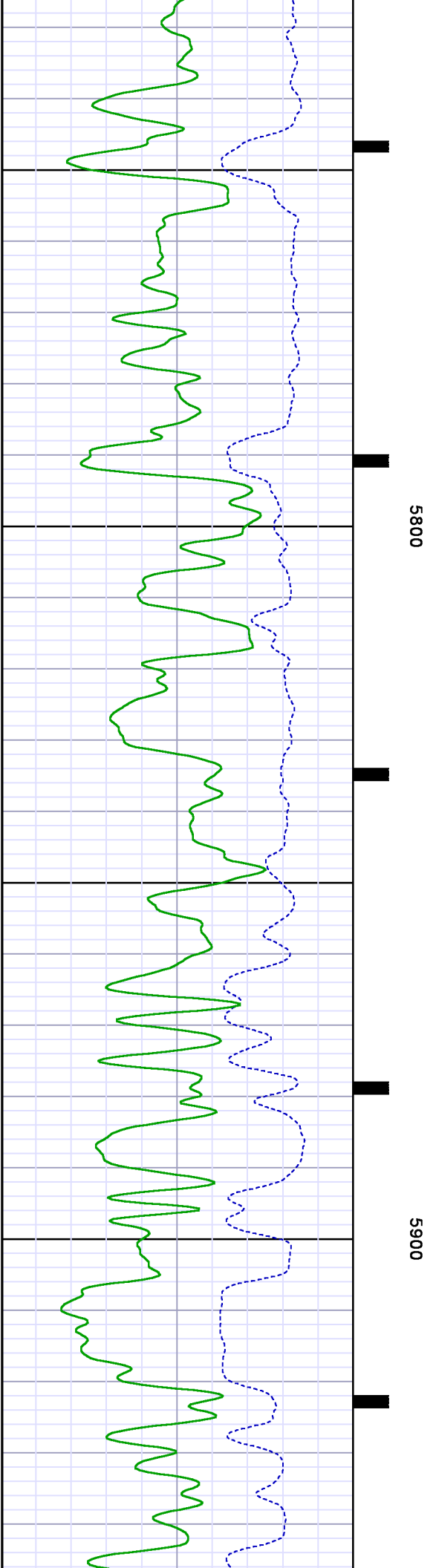
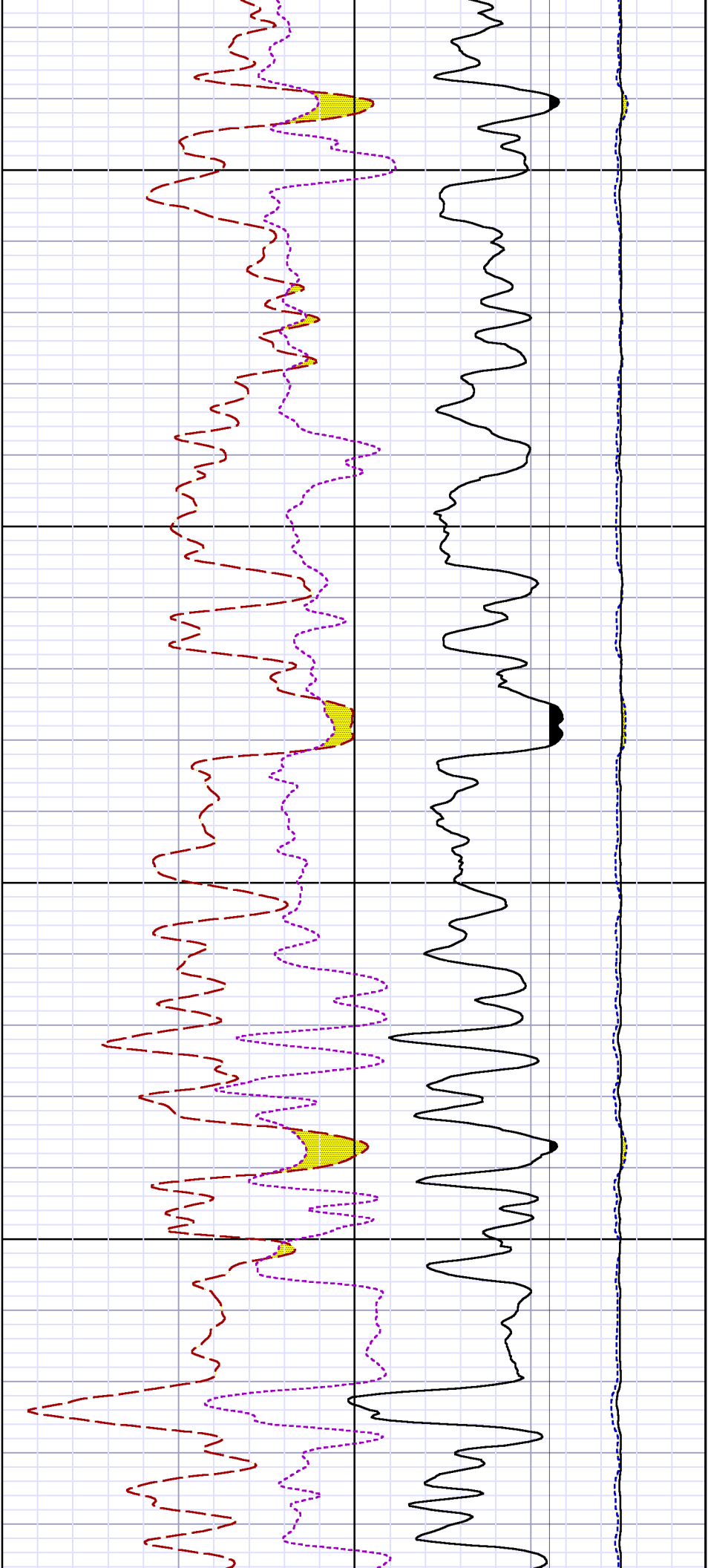
5000

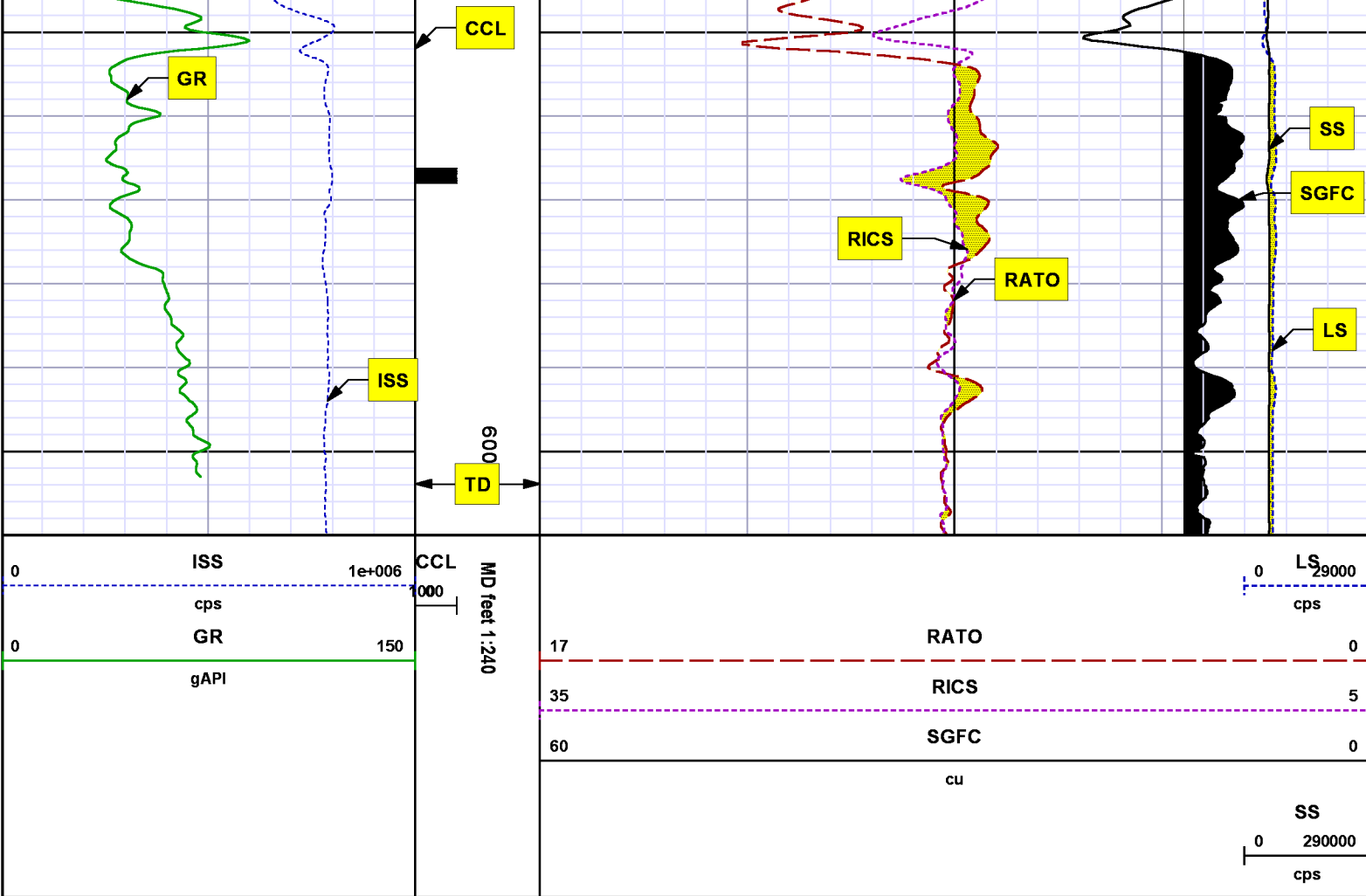












*REPEAT SECTION
PNC 3-D MODE*

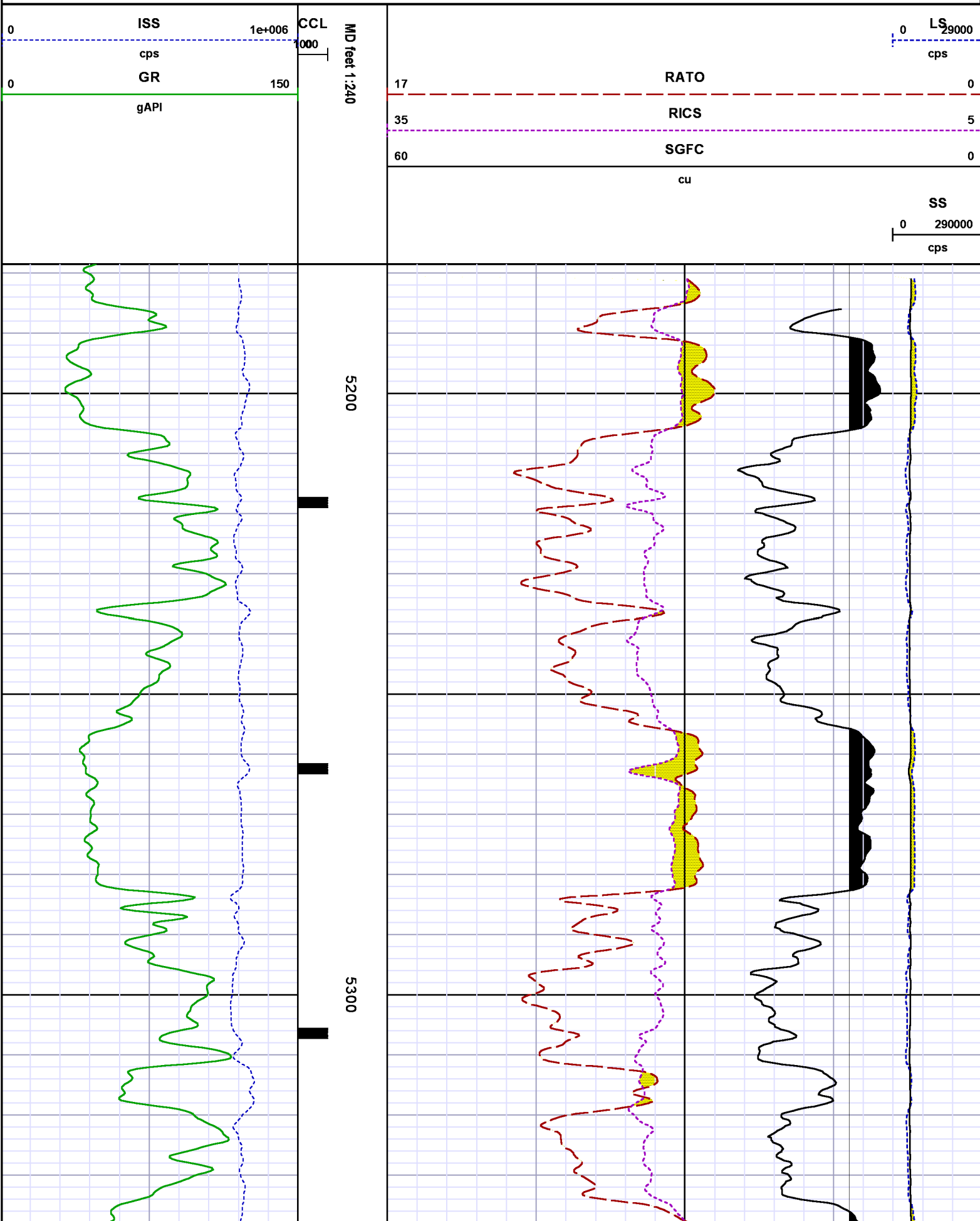
SPL PROCESSING

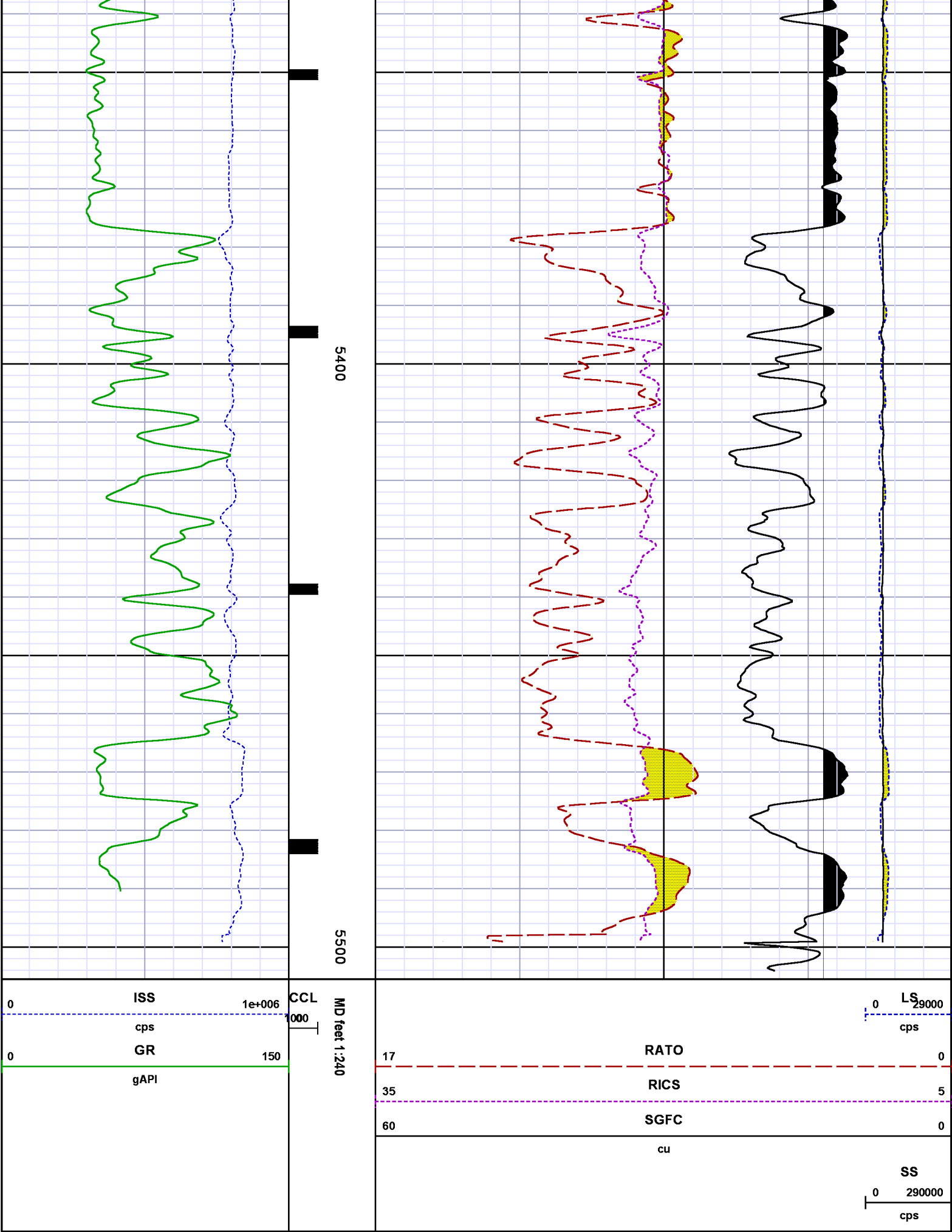
MEASUREMENT TYPE	PARAMETER	VALUE	UNITS	TOP	BOTTOM
PNC Porosity	Borehole	Cased		5178.280	5502.030
PNC Porosity	Borehole Size	8.750	inch	5178.280	5502.030
PNC Porosity	Casing Size	4.500	inch	5178.280	5502.030
PNC Porosity	Gas Filled	Non Gas Filled		5178.280	5502.030
PNC Porosity	Matrix	Sandstone		5178.280	5502.030

DEPTH OFFSETS

(for Acquired Curves)

SERIES	DEPTH OFFSET	ACQUIRED CURVES
8248ED	-15.320	FLTM
8248ED	-13.320	CCL CHV
8262XY	-10.189	GR4
8281XA	-0.662	HVC3Q0 SEQ3 AMA3 AML3 BKX CXS CPT3Q0 CPT3Q2 CPT3Q3 CPT3Q4 ET3 IXS MCS3 MCS3Q0 QCAL3 RGN3 RICX SDA3 SDL3 SGA3 SGL3 STA3 XS ASPEC3 AMB3 AMF3 CHF3 IXSC IXSN RATO23 RICXC RIN13C RIN23 RIN23C SD3D SG3D SGB3 SGF3 WIDTH3 CXSR IXSR XSR RICXR
8281XA	-0.250	HVC2Q0 SEQ2 AMA2 AMB2 AMF2 AML2 BKL CHF2 CLS CPT2Q0 CPT2Q2 CPT2Q3 CPT2Q4 ET2 ILS LS MCS2 MCS2Q0 QCAL2 RGN2 RICL RONE23 RTWO23 SDA2 SDL2 SGA2 SGB2 SGF2 SGK2 SGL2 STA2 ASPEC2 ILSC ILSN WIDTH2 RICLC CLSR ILSR LSR RICLR
8281XA	0.000	CPRS HVC1Q0 MV SEQ SEQ1 AMA1 AMB1 AME1 AMF1 AML1 BKS CHF1 CSS CORB CORF CPT1Q0 CPT1Q2 CPT1Q2A CPT1Q2B CPT1Q2C CPT1Q3 CPT1Q4 CPT1Q5 ET1 G1 G2 GE1S GE2S ISS MCS1 MCS1Q0 QA1 QCAL1 QM1 RATO RATO13 RBOR RGN1 RICS RIN RONE RPOR RTWO RIN13 RONE13 RTWO13 SALB SC1 SDA1 SDL1 SGA1 SGB1 SGBC SGE1 SGF1 SGFC SGK1 SGL1 SS SS2 STA1 PD1S PD2S PD3S MD1S MD2S MD3S DG1S DG2S DG3S PD1M PD2M PD3M MD1M MD2M MD3M DG1M DG2M DG3M MVS MA MVM FILV IAM TA PVM PVS IAS SSTAT QPD1 QPD2 QPD3 QMD1 QMD2 QMD3 QDG1 QDG2 QDG3 QMA QTA QFILV QMV QPV QIA DERR DCNT QPK1 QSA1 PKS1 ASPEC1 H0C FE2XC ISSC RINC ISSN RDEN WIDTH1 RICSC CSSR G1R G2R ISSR SSR SS2R RATOR RATO13R RBORR RICSR RINR RIN13R RONER RPORR RTWOR
SYSTEM	0.000	TEN TTEN





CALIBRATION SUMMARY

GAMMA RAY (GR4)

Calibration File: C:\case\calver\GRV470A1.cal

CALIBRATION SUMMARY

DATE/TIME PERFORMED: Mon Aug 19 06:10:45 2013 TOOL SERIES: 8262XY ASSET: 470 SEQ: A1

Calibrator #	Background	Calibrator On	Multiplicative	Background	Calibrator On	Differential
	[cps]	[cps]		[api]	[api]	[api]
S2K WA612	87.27	418.89	0.543	47.37	227.37	180.00

Verification File: C:\case\calver\GRV470A1.VP

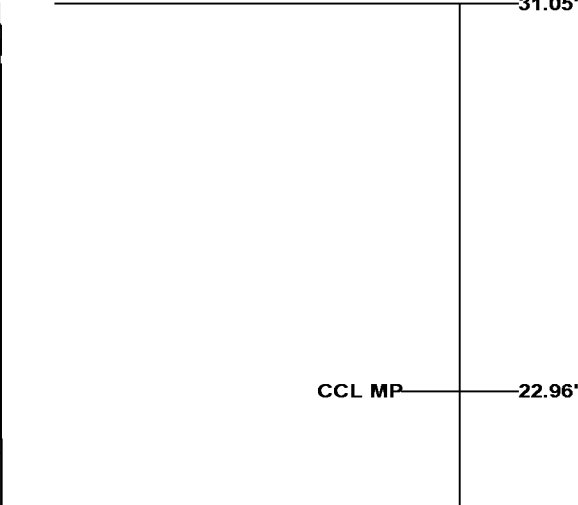
PRIMARY VERIFICATION

DATE/TIME PERFORMED: Mon Aug 19 06:13:37 2013 TOOL SERIES: 8262XY ASSET: 470 SEQ: A1

Calibrator #	Background	Calibrator On	Multiplicative	Background	Calibrator On	Differential
	[cps]	[cps]		[api]	[api]	[api]
S2K WA612	85.31	422.40	0.543	46.31	229.27	182.97

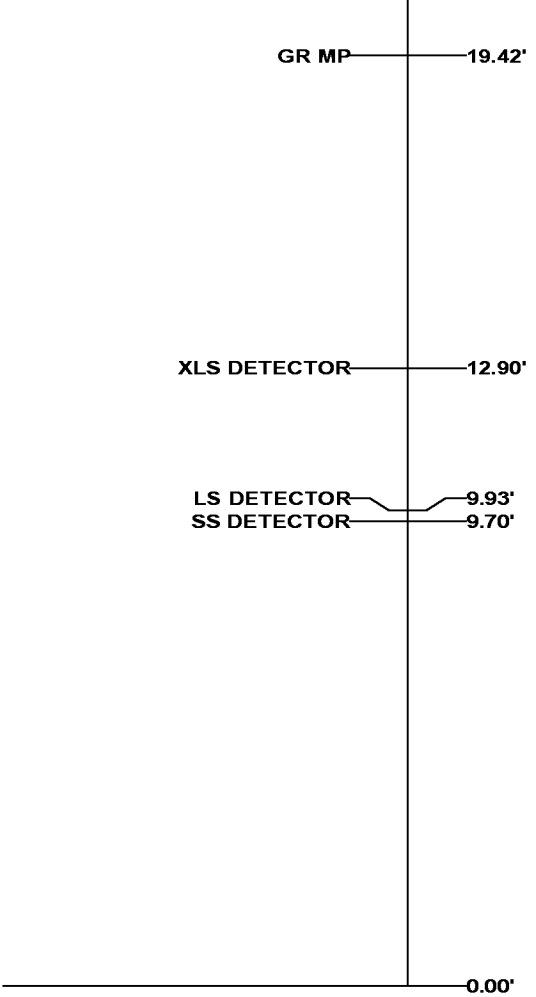
TOOL DIAGRAM

OTA SHORT CABLE HEAD	
PCM POWER SUPPLY	
Series	8250EA
Mnemonic	PCM
Diameter	1.70"
Weight	18.00 lb
Length	3.86'
Temp Rating	350.00 °F
TELEMETRY / CCL	
Series	8248EA
Mnemonic	PCM
Diameter	1.70"
Weight	20.00 lb
Length	4.46'
Measure Point	1.00' CCL MP
Temp Rating	350.00 °F
Press Rating	15000.00 PSI
GAMMA RAY	
Series	8262XA
Mnemonic	GR





Diameter	1.70"
Weight	15.00 lb
Length	3.17'

RESERVOIR PERFORMANCE MONITOR	
Series	8281XA
Mnemonic	RPM
Diameter	1.70"
Weight	75.00 lb
Length	18.58'
Measure Point	9.49' SS DETECTOR
Measure Point	9.72' LS DETECTOR
Measure Point	12.69' XLS DETECTOR
Temp Rating	350.00 °F
Press Rating	20000.00 PSI



Total Length: 31.05'
Total Weight: Not Available
Max Diameter: 0' 1.70"

<div> BAKER HUGHES</div> <div>Baker Atlas</div> <div></div>	<div>Company</div> <div>WPX ENERGY</div>	<div>File No:</div> <div>CH075920</div>
	<div>Well</div> <div>STRAIT SG 431-22</div>	<div>API No:</div> <div>05045217480000</div>
	<div>Field</div> <div>GRAND VALLEY</div>	
	<div>County</div> <div>GARFIELD</div> <div>State</div> <div>COLORADO</div>	
	<div>Location</div> <div>SHL: 1489' FNL x 293' FEL</div> <div>BHL: 893' FNL x 2198' FEL (NWNE)</div>	<div>Elevations</div> <div>KB 5244 ft</div> <div>DF</div> <div>GL 5222 ft</div>
	<div>SEC</div> <div>22</div> <div>TWP</div> <div>7S</div> <div>RGE</div> <div>96W</div>	<div>22 7S 96W</div> <div>SG 42-22 PAD</div> <div>CYCLONE 17</div>