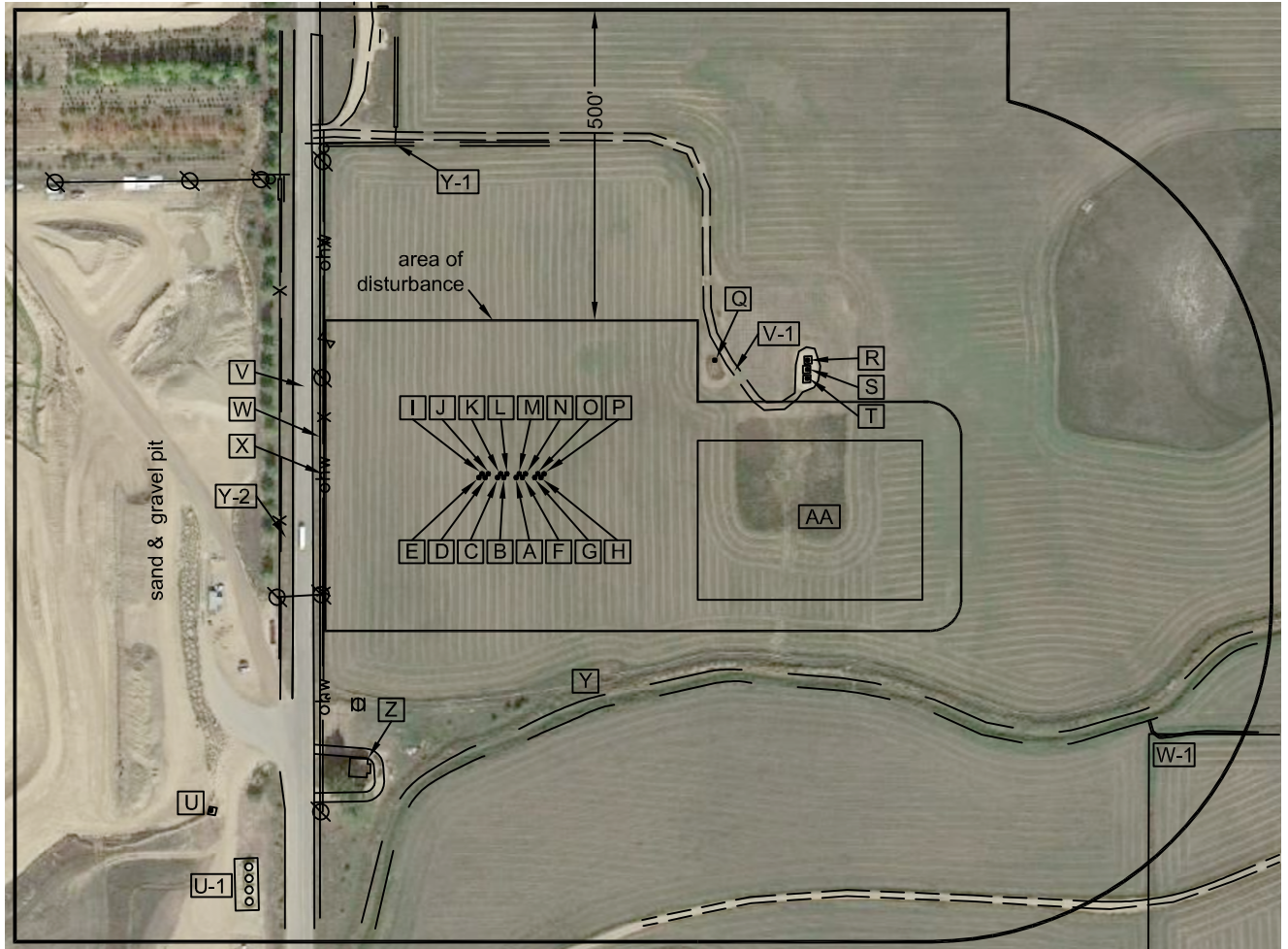
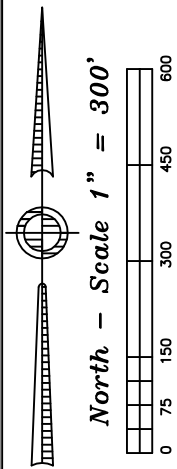


# Location Drawing

Nearest:  
 Building: 512' southwest  
 Property Line: 316' west  
 Above Ground Utility: 311' west  
 Public Road: 327' west  
 Railroad: 10,202' southeast



## Distances listed below are measured from the proposed File 3I-32H-K268 well

- [A] proposed File 3I-32H-K268
- [B] proposed File 3G-32H-K268; 20' west
- [C] proposed File 3E-32H-K268; 30' west
- [D] proposed File 3C-32H-K268; 50' west
- [E] proposed File 3A-32H-K268; 60' west
- [F] proposed File 3K-32H-K268; 10' east
- [G] proposed File 3M-32H-K268; 30' east
- [H] proposed File 3O-32H-K268; 40' east
- [I] proposed File 3B-32H-K268; 55' northwest
- [J] proposed File 3D-32H-K268; 45' northwest
- [K] proposed File 3F-32H-K268; 26' northwest
- [L] proposed File 3H-32H-K268; 16' northwest
- [M] proposed File 3J-32H-K268; 8' northeast
- [N] proposed File 3L-32H-K268; 16' northeast
- [O] proposed File 3N-32H-K268; 36' northeast
- [P] proposed File 3P-32H-K268; 45' northeast
- [Q] existing Nelson #4; 371' northeast
- [R] existing Ray Nelson 4-4-32; 506' northeast
- [S] existing Ray Nelson 4-6-32; 501' northeast
- [T] existing Ray Nelson 23-32; 495' northeast
- [U] existing Nelson "E" Unit 1; 727' southwest
- [U-1] fenced in tanks 741' southwest

- [V] WCR 3.25; 327' west
- [V-1] access 384' northeast
- [W] property line 316' west
- [W-1] property line 1100' southeast
- [X] overhead power line 311' west
- [Y] ditch 375' southeast
- [Y-1] ditch 569' northwest
- [Y-2] ditch 368' west
- [Z] building 512' southwest
- [AA] proposed facility pad 293' east

Proposed Well Data:  
 File 3I-32H-K268  
 Latitude: N 40.09257°  
 Longitude: W 105.03100°  
 FSL: 1757'  
 FWL: 1653'  
 ELEV: 4958'  
 PDOP: 2.4

Existing Well Data:  
 Nelson #4  
 Latitude: N 40.09308°  
 Longitude: W 105.02985°  
 FSL: 1946'  
 FWL: 1974'  
 ELEV: 4957'  
 PDOP: 2.0

Existing Well Data:  
 Ray Nelson 4-4-32  
 Latitude: N 40.09308°  
 Longitude: W 105.02932°  
 FSL: 1946'  
 FWL: 2123'  
 ELEV: 4958'  
 PDOP: 2.4

Existing Well Data:  
 Ray Nelson 4-6-32  
 Latitude: N 40.09304°  
 Longitude: W 105.02932°  
 FSL: 1931'  
 FWL: 2123'  
 ELEV: 4958'  
 PDOP: 2.4

Existing Well Data:  
 Ray Nelson 23-32  
 Latitude: N 40.09300°  
 Longitude: W 105.02932°  
 FSL: 1946'  
 FWL: 2123'  
 ELEV: 4958'  
 PDOP: 2.1

Existing Well Data:  
 Nelson "E" Unit 1  
 Latitude: N 40.09110°  
 Longitude: W 105.03277°  
 FSL: 1221'  
 FWL: 1160'  
 ELEV: 4962'  
 PDOP: 1.9

### Legend:

- ⊗ - monitoring well
- ⚙ - water/irrigation valve
- ⚡ - power pole
- ⊕ - utility/gas sign
- X— - fence line
- ohw— - overhead power line

Field observations taken  
on 6/13/13 by operator  
John Rice.

## File 32H-K268 Pad Location Drawing

Improvements extending  
500' from disturbance

Township 2 North, Range 68 West,  
Section 32: NESW  
Weld County, Colorado

August 21, 2013

JR Land Surveying, LLC  
 8114 Northstar Drive  
 Windsor, Colorado 80528  
 P. 970-576-4641