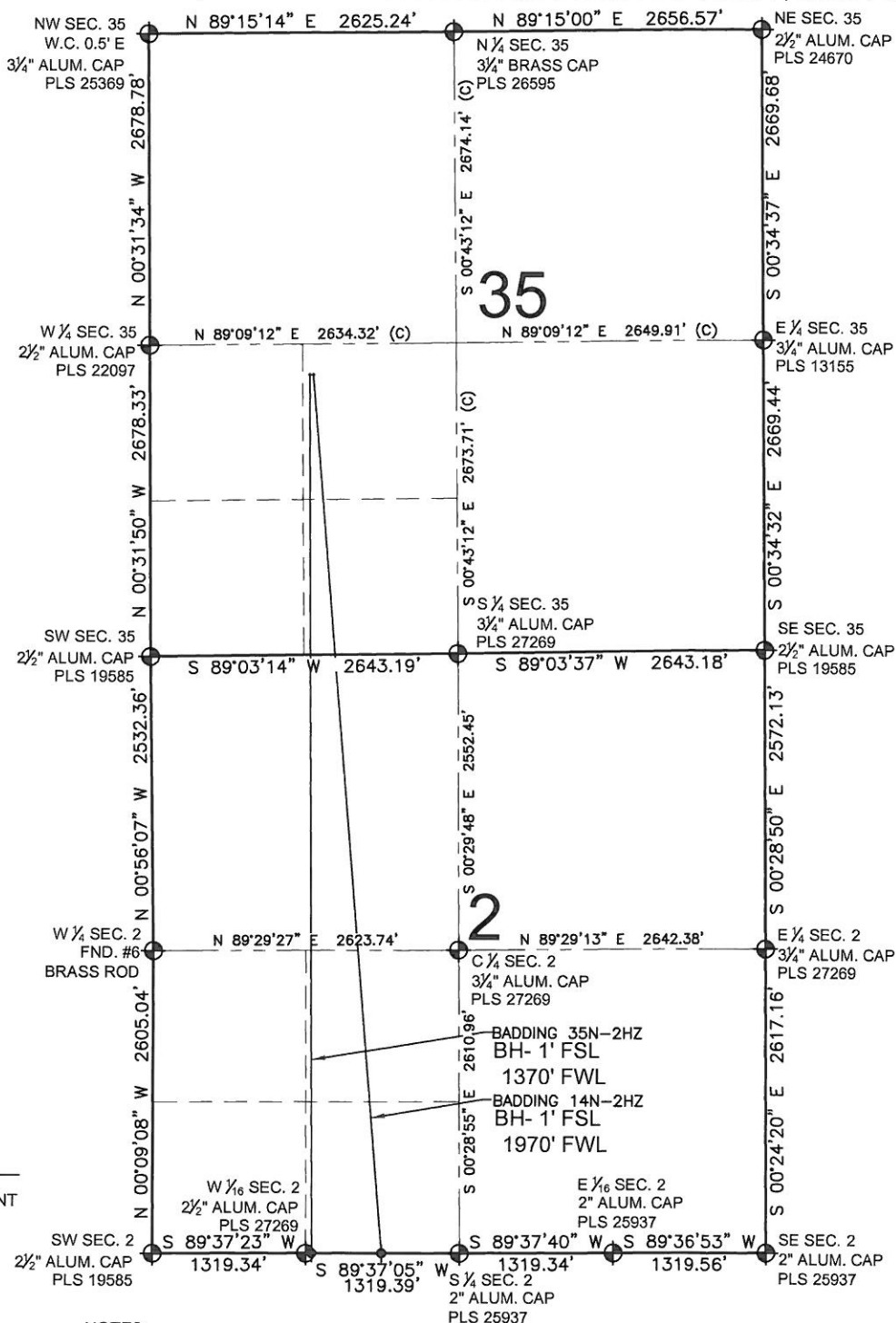


BADDING 35N-2HZ MULTI-WELL PLAN

SECTION 35, TOWNSHIP 2 NORTH, RANGE 66 WEST, 6TH P.M.



PREPARED BY:



KERR-MCGEE OIL & GAS ONSHORE LP

FIELD DATE:

06-10-13

DRAWING DATE:

06-12-13

SURFACE LOCATION:

NE 1/4 SW 1/4, SEC. 35, T2N, R66W, 6TH P.M.
WELD COUNTY, COLORADO

