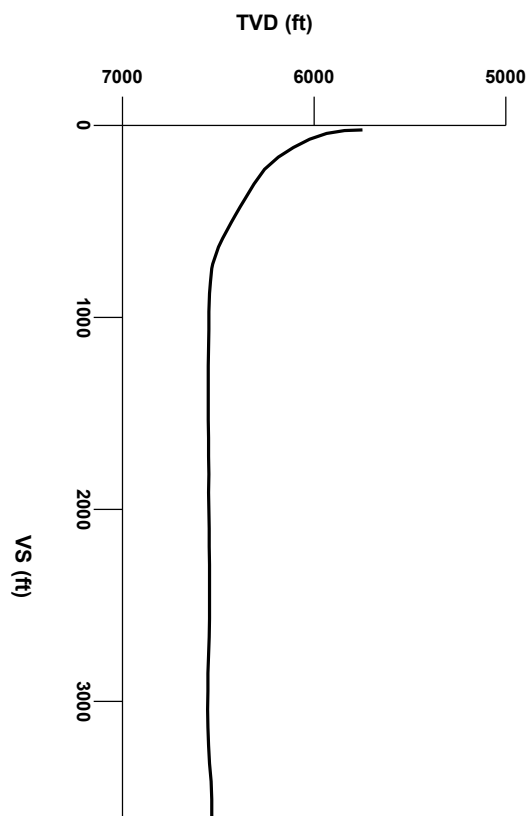


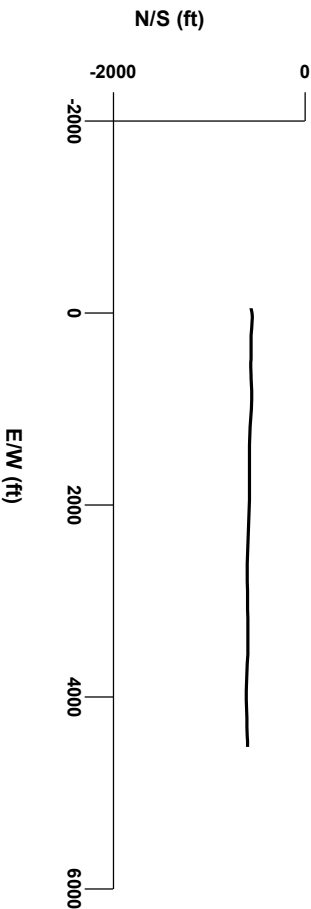
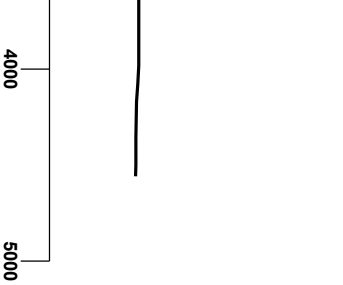
LOG created using Lplot VH Version 3.0, May 01, 2013, Copyright (C) 1999-2009 Pason Systems Corp.

**OPERATOR:** NOBLE ENERGY INC.  
**WELL:** SLW RANCH STATE B13-69HN  
**LOCATION:** SWSW SEC 12, T5N, R64W  
**COUNTY:** WELD  
**STATE:** COLORADO  
**SPOT:** 625' FSL, 246' FWL  
**ELEVATION:** GR 4,595', KB 4,625'  
**FIELD:** WILDCAT  
**SPUD DATE:** 04/24/2013  
**TD DATE:** 04/30/2013  
**DATES LOGGED:** 04/26/2013 - 04/30/2013  
**DEPTHS LOGGED:** 5835' MD - 10833' MD  
**LOGGERS:** ANDREA ZUIDEMA, SHANA SWIRIN  
**DRILLING FLUID:** LSND  
**DRILLING RIG:** H&P 326  
**API:** 05-123-36496  
**LOG TYPE:** HORIZONTAL  
**SCALE:** 1:240 (5 inches per 100 feet)  
**REMARKS:** WELLSITE GEOLOGICAL SERVICES  
 PROVIDED BY COLUMBINE LOGGING INC.



Survey Elevation

Survey Plan



Chalk

Marl

Silty Shale

ENGINEERING SYMBOLS

▲

Casing

▲

Casing

□

Connection

⊗

Connection Gas

⊗

Midnight Depth

⊗

Normal Fault

⊗

Reverse Fault

GAS

0 UNITS 6000

C1

0 PPM 600000

C2

0 PPM 600000

C3

0 PPM 600000

C4

0 PPM 600000

DEPTH (FEET)

5750 60 70 80 90 5800 10 20 30 40 50 60 70 80 90 5900

ROP

0 FT/HR 1000

COLUMBINE LOGGING INC.  
RIGGED UP ON 04/25/2013  
MANNED 2-PERSON LOGGING  
WITH BLOODHOUND GAS  
CHROMATOGRAPH UNIT #0298  
COLUMBINE BEGAN LOGGING  
ON 04/26/2013

BEGAN DRILLING CURVE  
@ 10:09 PM 04/26/2013

1621u

2662u

CUTTINGS LITHOLOGY

TVD

ft

8500

5500

0

GAMMA

API

200

BHA BIT:  
SEC 8.75" MMD 55  
Serial #: 12158446  
Jets: 5x14

Acetone was used as the cutting agent with the dimple filled to the rim

The ratings are based on 7 descriptors:  
None, Slight trace, Trace, Fair, Moderate, Good, and Excellent. The descriptor used is based on the loggers observations and best judgment of brilliance, color and longevity of the cut.

MD 5825'  
INC 0.5°  
AZM 21.2°  
TVD 5747.31'

WT IN 9.00/ OUT 8.95  
VIS IN 29/ OUT 30

WT 1  
VIS

SL.TYSH: m gy - dk gy, mod sft - mod firm, sbblky - sbply, shy tex, noncalc, tr ss

SL.TYSH: m gy - dk gy, mod sft - mod firm, sbblky - sbply, shy tex, noncalc, tr ss

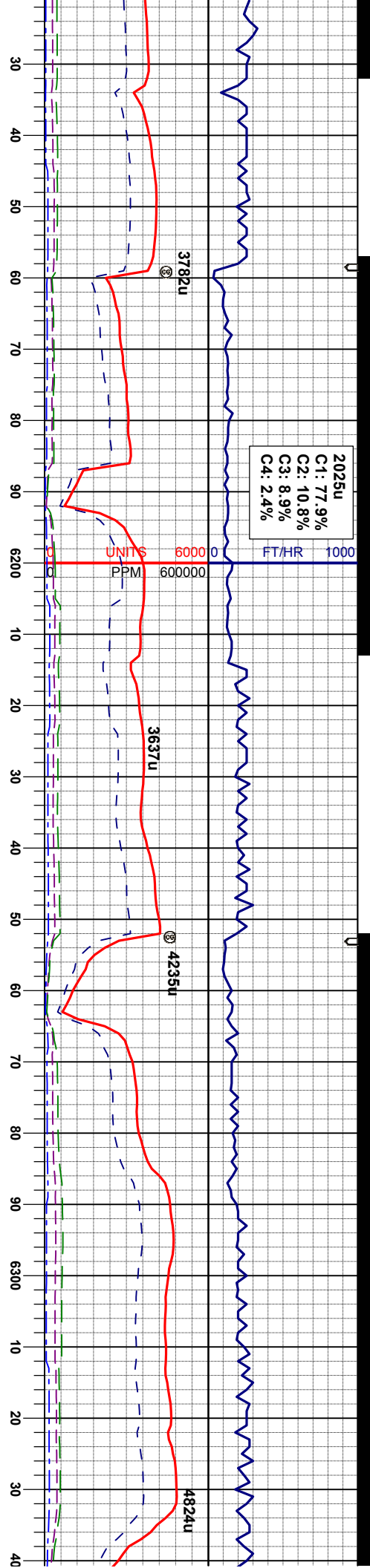
OIL SHOWS

TFG

SAMPLE PHOTOS







WT IN 9.90/ OUT 9.85  
VIS IN 30/ OUT 29

WT IN 10.05/ OUT 9.85  
VIS IN 30/ OUT 29

WT IN 10.20/ OUT 10.05  
VIS IN 30/ OUT 29

MD 6204'  
INC 29.8°  
AZM 91.8°  
TVD 6108.18'

MD 6298'  
INC 35.4°  
AZM 94.0°  
TVD 6187.34'

dk gy, mod sft - mod firm,  
sly tex, noncalc, tr ss

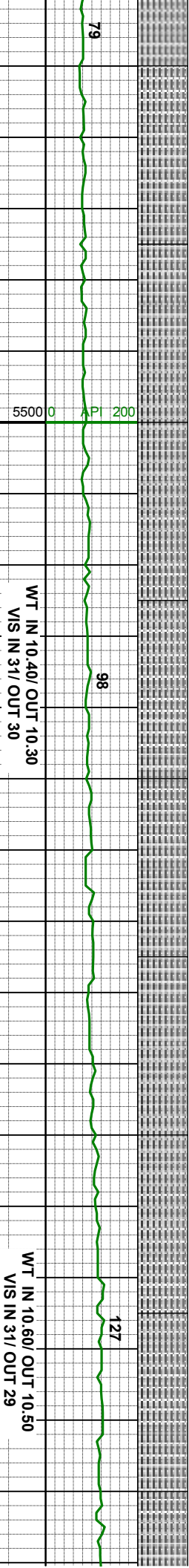
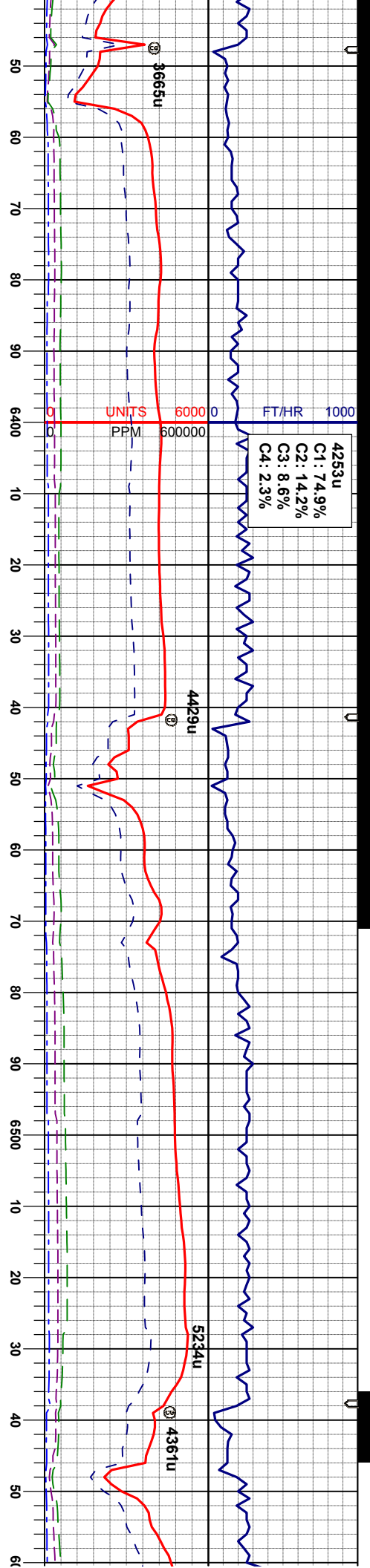
SLTYSH: m gy - dk gy, mod sft - mod firm,  
sbbly - sbply, sly tex, noncalc, tr ss

SLTYSH: m gy - dk gy, mod sft - mod firm,  
sbbly - sbply, sly tex, noncalc, tr shys

SLTYSH: m gy - dk gy, mod sft - mod firm,  
sbbly - sbply, sly tex, noncalc, tr shys

SLTYSH: m gy - dk gy, mod sft - mod firm,  
sbbly - sbply, sly tex, noncalc, tr sh





MD 6393'  
INC 48.2°  
AZM 94.6°  
TVD 6258.01'

MD 6488'  
INC 58.9°  
AZM 92.8°  
TVD 6314.38'

firm,  
SLTYSH: m gy - dk gy, mod sft - mod firm,  
sblky - sblpy, shy tex, noncalc, tr shys

SLTYSH: m gy - dk gy, mod sft - mod firm,  
sblky - sblpy, shy tex, noncalc

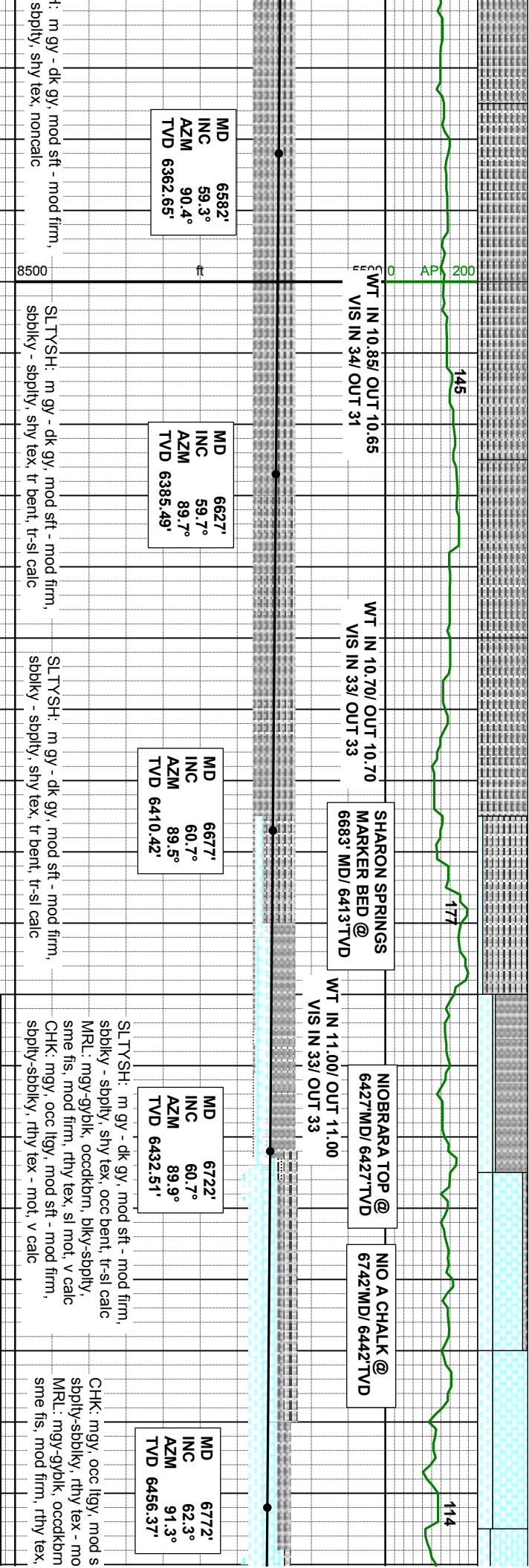
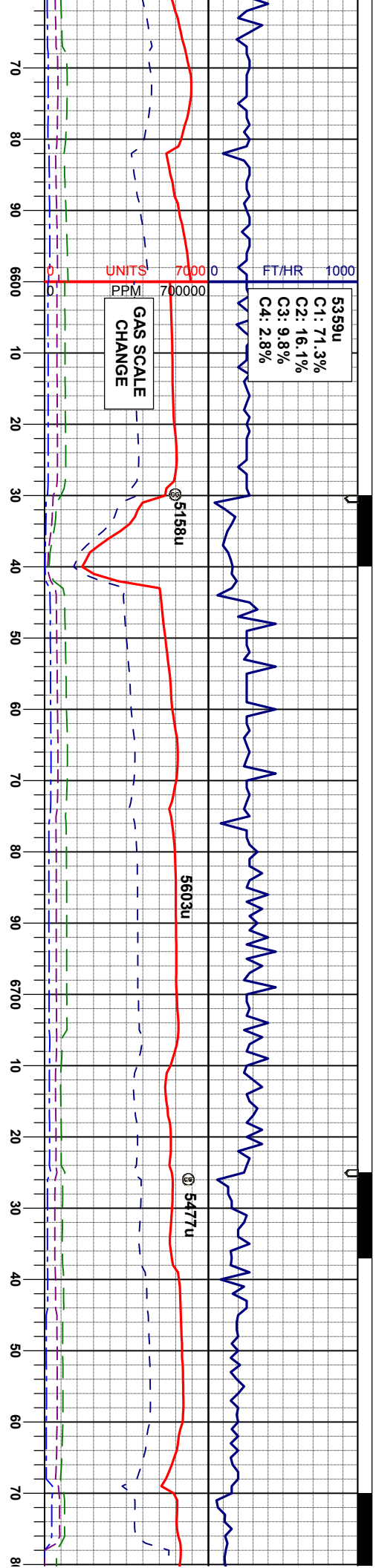
SLTYSH: m gy - dk gy, mod sft - mod firm,  
sblky - sblpy, shy tex, noncalc

SLTYSH: m gy - dk gy, mod sft - mod firm,  
sblky - sblpy, shy tex, noncalc

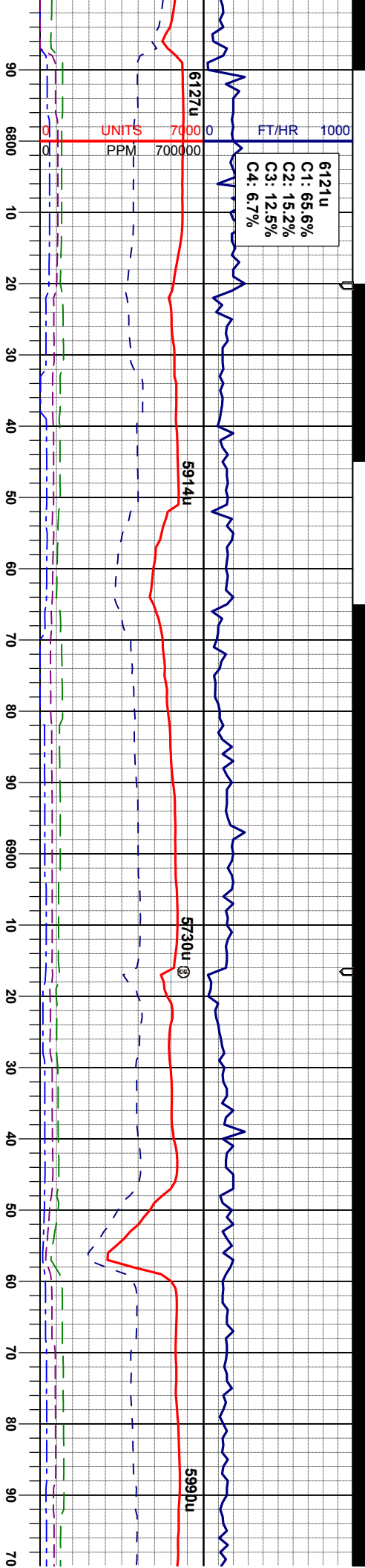
SLTYSH: m gy - dk gy, mod sft - mod firm,  
sblky - sblpy, shy tex, noncalc











NIO A MARL @  
6806' MD/ 6472' TVD

WT IN 11.00/ OUT 11.00  
VIS IN 34/ OUT 34

MD 6817'  
INC 62.7°  
AZM 91.7°  
TVD 6477.14'

MR.L: mgy-gyblk, occckbrn, blkys-sbply,  
sme fis, mod firm, rthy tex, sl mot, occ bent,  
v calc  
CHK: mgy, occ lgy, mod sft - mod firm,  
sbply-sbblky, rthy tex - mot, v calc

MD 6867'  
INC 65.1°  
AZM 89.7°  
TVD 6499.14'

MR.L: mgy-gyblk, occckbrn, blkys-sbply,  
sme fis, mod firm, rthy tex, sl mot, occ bent,  
v calc  
CHK: mgy, occ lgy, mod sft - mod firm,  
sbply-sbblky, rthy tex - mot, v calc

WT IN 11.00/ OUT 11.00  
VIS IN 35/ OUT 35

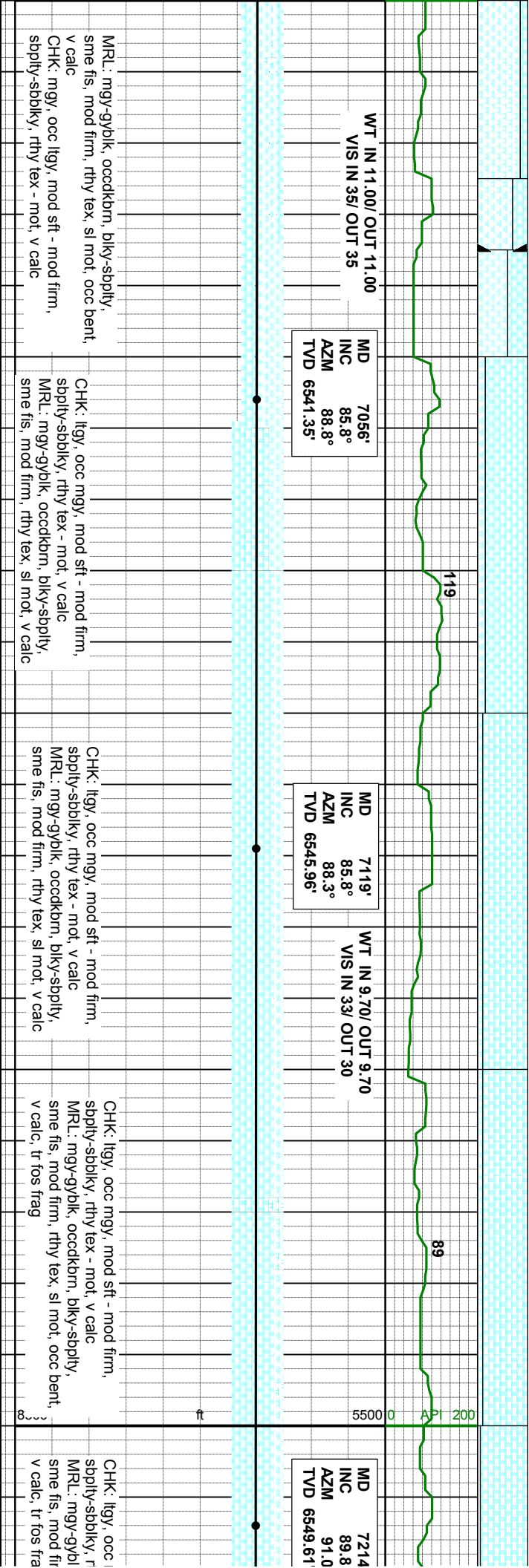
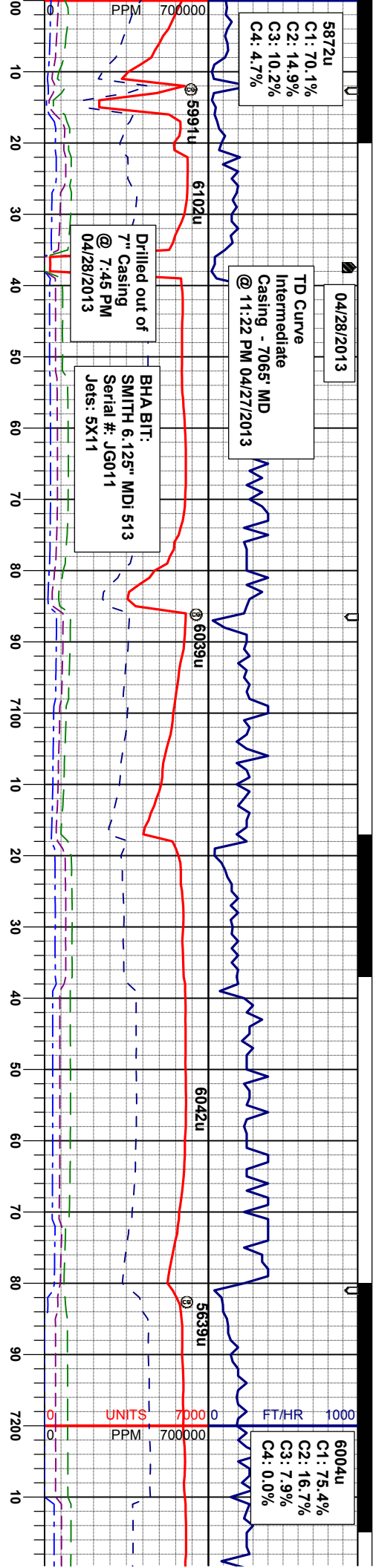
MD 6962'  
INC 77.8°  
AZM 86.8°  
TVD 6529.31'

MR.L: mgy-gyblk, occckbrn, blkys-sbply,  
sme fis, mod firm, rthy tex, sl mot, occ bent,  
v calc  
CHK: mgy, occ lgy, mod sft - mod firm,  
sbply-sbblky, rthy tex - mot, v calc

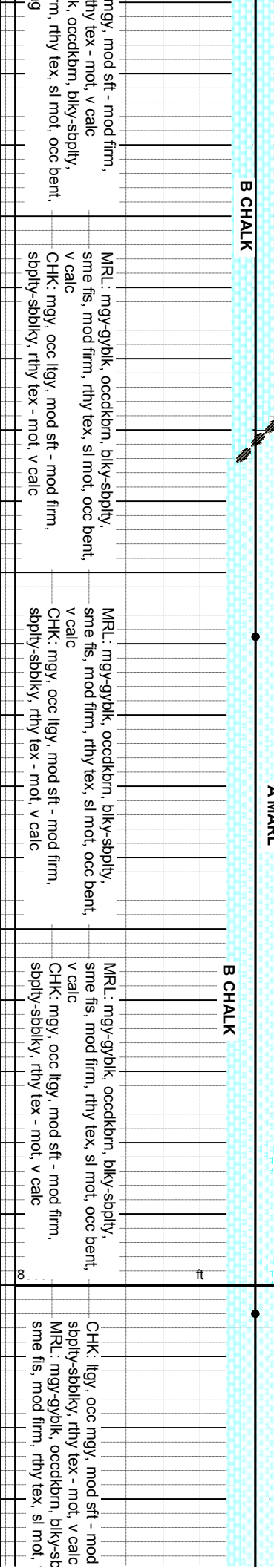
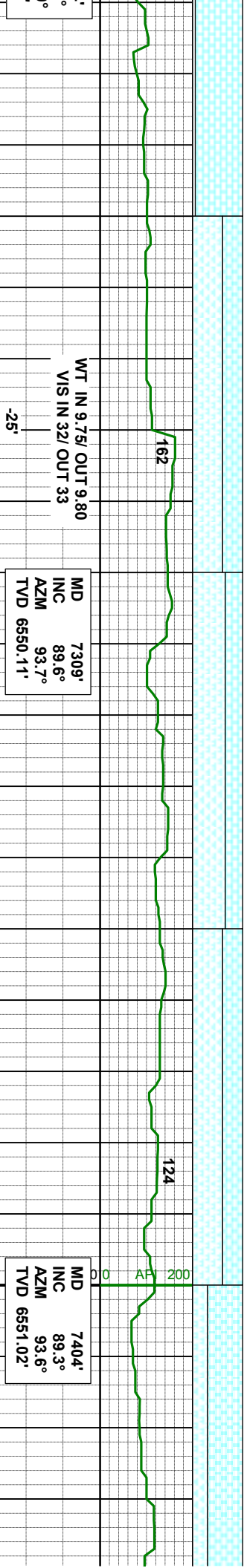
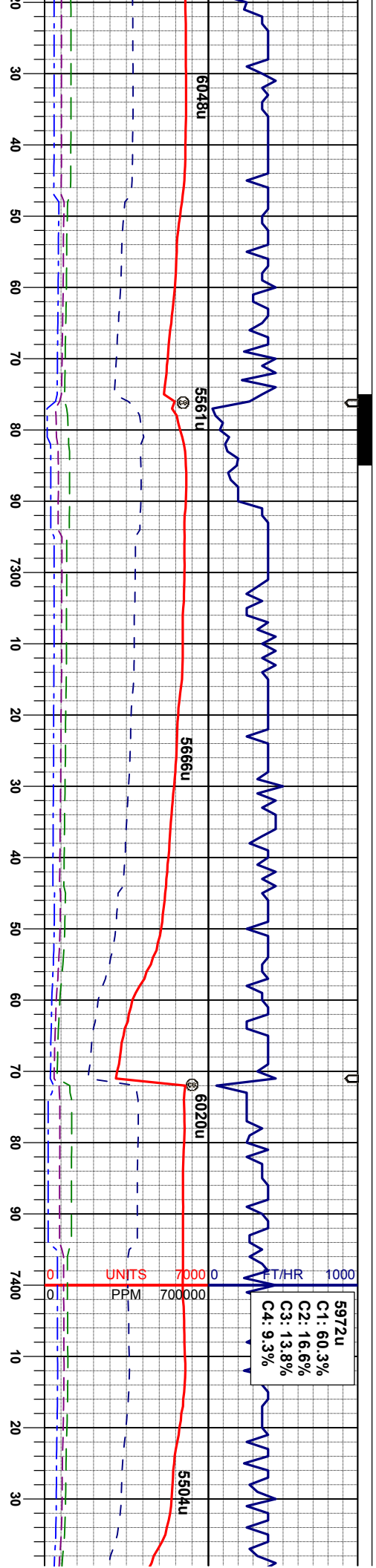
MD 6967'  
INC 81.6°  
AZM 87.1°  
TVD 6533.78'







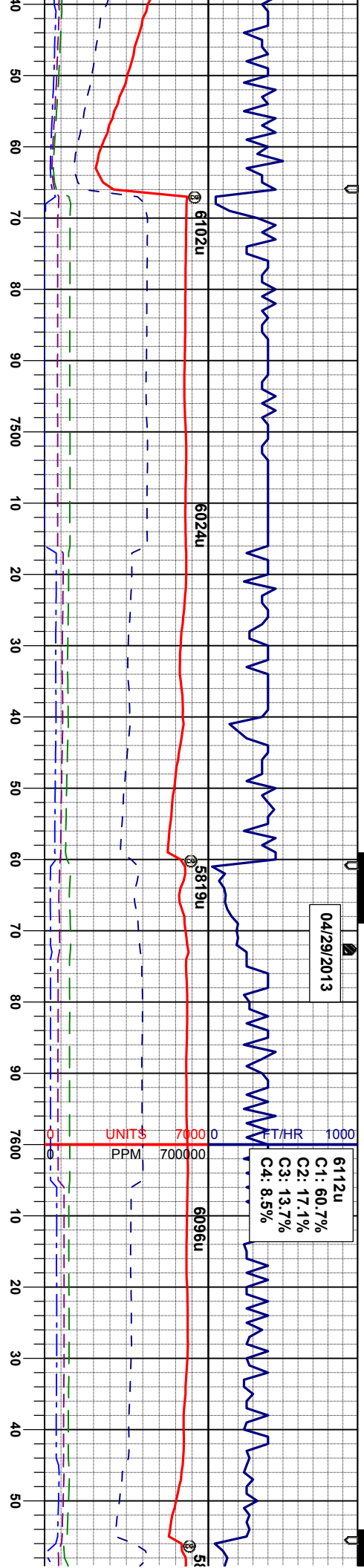






04/29/2013

6112u  
C1: 60.7%  
C2: 17.1%  
C3: 13.7%  
C4: 8.5%



WT IN 9.75/ OUT 9.90  
VIS IN 33/ OUT 31

MD 7498'  
INC 89.0°  
AZM 93.6°  
TVD 6552.41'

+14'

B CHALK

B MARL

WT IN 9.80/ OUT 9.90  
VIS IN 33/ OUT 32

MD 7593'  
INC 89.8°  
AZM 92.4°  
TVD 6553.41'

CHK: lgy, occ mgy, mod sft - mod firm,  
sbply-sbply, rthy tex - mot, v calc  
MRL: mgy-gyblk, occdkbm, bly-sbply,  
sme fis, mod firm, rthy tex, sl mot, v calc, r  
calc frag

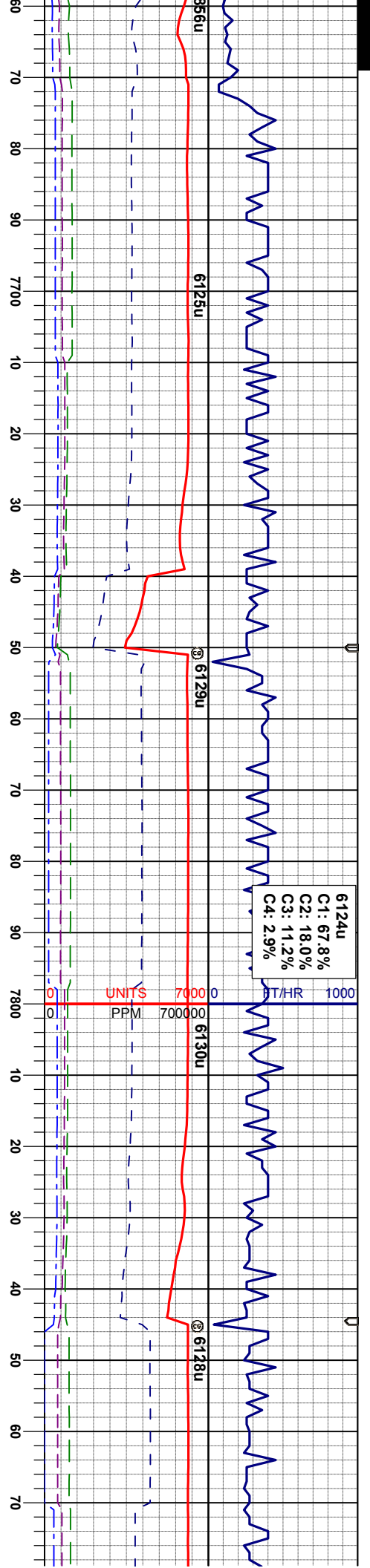
CHK: lgy, occ mgy, mod sft - mod firm,  
sbply-sbply, rthy tex - mot, v calc  
MRL: mgy-gyblk, occdkbm, bly-sbply,  
sme fis, mod firm, rthy tex, sl mot, v calc, r  
calc frag

CHK: lgy, occ mgy, mod sft - mod firm,  
sbply-sbply, rthy tex - mot, v calc, tr mrl

CHK: lgy, occ mgy, mod sft - mod firm,  
sbply-sbply, rthy tex - mot, v calc  
MRL: mgy-gyblk, occdkbm, bly-sbply,  
sme fis, mod firm, rthy tex, sl mot, occ bent,  
v calc

CHK: sbply





MD 7688'  
INC 90.6°  
AZM 90.5°  
TVD 6553.08'

WT IN 9.85/ OUT 9.95  
VIS IN 34/ OUT 33

MD 7782'  
INC 90.6°  
AZM 90.0°  
TVD 6552.09'

WT IN 9.90/ OUT 9.95  
VIS IN 33/ OUT 33

MD 7850'  
INC 90.6°  
AZM 90.0°  
TVD 6552.09'

CHK: lty, occ mgy, mod sft - mod firm, sbply-sbply, rthy tex - mot, v calc  
MRL: mgy-gyblk, occdkbrn, bky-sbply, sme fis, mod firm, rthy tex, sl mot, v calc, r fos frag

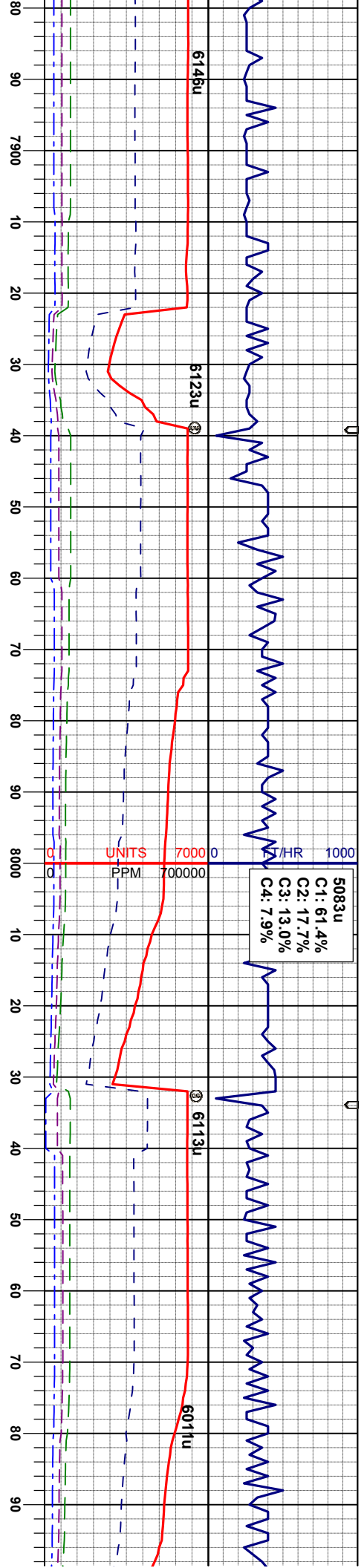
CHK: lty, occ mgy, mod sft - mod firm, sbply-sbply, rthy tex - mot, v calc  
MRL: mgy-gyblk, occdkbrn, bky-sbply, sme fis, mod firm, rthy tex, sl mot, v calc, r fos frag

CHK: lty, occ mgy, mod sft - mod firm, sbply-sbply, rthy tex - mot, v calc  
MRL: mgy-gyblk, occdkbrn, bky-sbply, sme fis, mod firm, rthy tex, sl mot, v calc, r fos frag

CHK: lty, occ mgy, mod sft - mod firm, sbply-sbply, rthy tex - mot, v calc  
MRL: mgy-gyblk, occdkbrn, bky-sbply, sme fis, mod firm, rthy tex, sl mot, v calc, r fos frag







7877'  
90.4°  
89.7°  
51.26'

MD 7972'  
INC 90.5°  
AZM 89.2°  
TVD 6550.52'

MD 8067'  
INC 90.0°  
AZM 89.8°  
TVD 6550.10'

CHK: mgy, occ dkg, mod sft - mod firm, sblty-sbblky, rthy tex - mot, occ calc incl, v calc  
MR: mgy-gyblk, occdkbrn, blk-y-sbply, sme fis, mod firm, occ calc incl, rthy tex, sl mot, v calc, rr fos frag, rr calc frag  
CHK: mgy, occ dkg, mod sft - mod firm, sblty-sbblky, rthy tex - mot, v calc

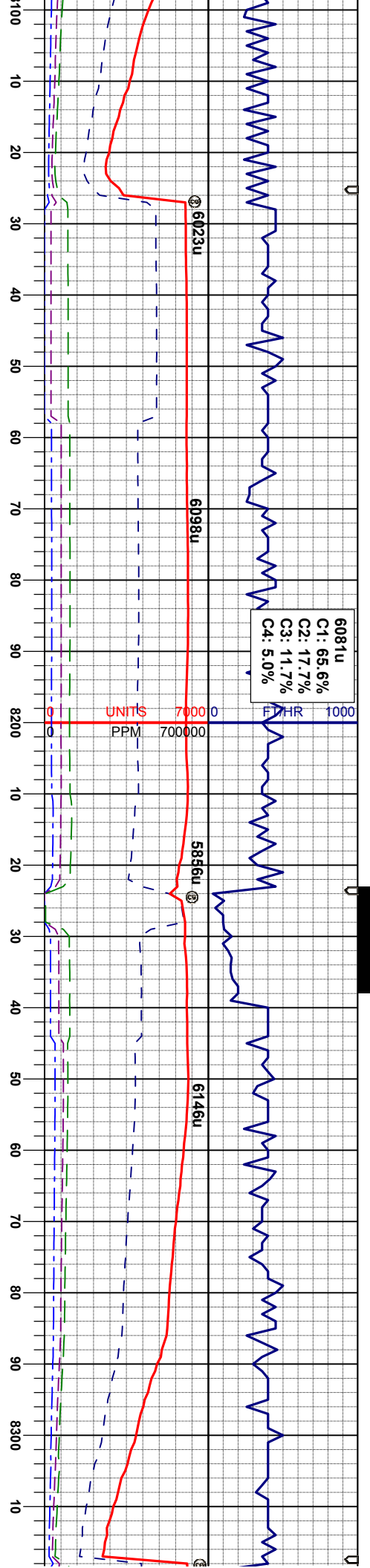
B MARL

A MARL

-60'







WT IN 9.80/ OUT 10.00  
VIS IN 33/ OUT 32

MD 8162'  
INC 89.8°  
AZM 89.9°  
TVD 6550.27'

MD 8256'  
INC 91.1°  
AZM 91.4°  
TVD 6549.53'

WT IN 9.70/ OUT 9.8  
VIS IN 33/ OUT 33

MRL: mgy-gyblk, occdkbrn, blyk-sbply,  
sme fis, mod firm, occ calc incl, rthy tex, sl  
mot, v calc, tr fos frag, tr calc frag  
CHK: mgy, occ dkgy, mod sft - mod firm,  
sbply-sbply, rthy tex - mot, v calc

MRL: mgy-gyblk, occdkbrn, blyk-sbply,  
sme fis, mod firm, tr calc incl, rthy tex, sl  
mot, v calc  
CHK: mgy, occ dkgy, mod sft - mod firm,  
sbply-sbply, rthy tex - mot, v calc

MRL: mgy-gyblk, occdkbrn, blyk-sbply,  
sme fis, mod firm, tr calc incl, rthy tex, sl  
mot, v calc  
CHK: mgy, occ dkgy, mod sft - mod firm,  
sbply-sbply, rthy tex - mot, v calc

MRL: mgy-gyblk, occdkbrn, blyk-sbply,  
sme fis, mod firm, tr bent, rthy tex, sl mot, v  
calc  
CHK: mgy, occ dkgy, mod sft - mod firm,  
sbply-sbply, rthy tex - mot, v calc

MRL: mgy-gyblk, occdkbrn, blyk-sbply,  
sme fis, mod firm, tr calc incl, rthy tex, sl  
mot, v calc  
CHK: mgy, occ dkgy, mod sft - mod firm,  
sbply-sbply, rthy tex - mot, v calc

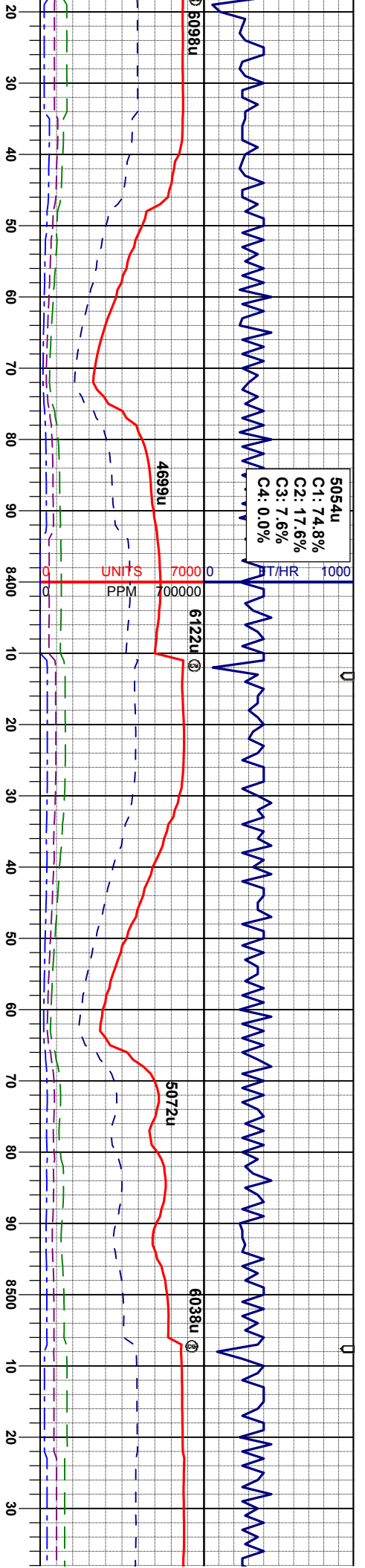
HALK

A MARL

B CHALK







MD 8352'  
INC 90.6°  
AZM 91.7°  
TVD 6548.11'

MD 8446'  
INC 90.4°  
AZM 91.9°  
TVD 6547.29'

MD  
INC  
AZM  
TVD

8500 ft

MRL: mgy-gyblk, occdkbrn, blk-y-sbply, sme fis, mod firm, tr bent, rthy tex, sl mot, v calc

CHK: mgy, occ dkgy, mod sft - mod firm, sbply-sbblky, rthy tex - mot, v calc

MRL: mgy-gyblk, occdkbrn, blk-y-sbply, sme fis, mod firm, tr bent, rthy tex, sl mot, v calc

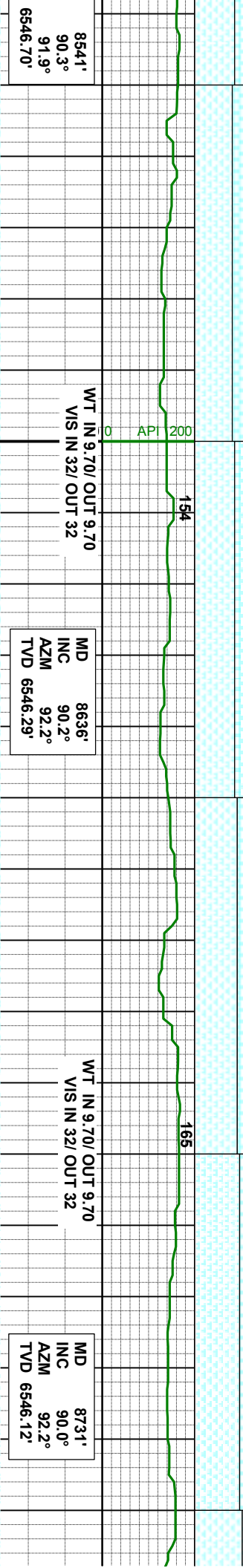
CHK: mgy, occ dkgy, mod sft - mod firm, sbply-sbblky, rthy tex - mot, v calc

MRL: mgy-gyblk, occdkbrn, blk-y-sbply, sme fis, mod firm, tr bent, rthy tex, sl mot, v calc

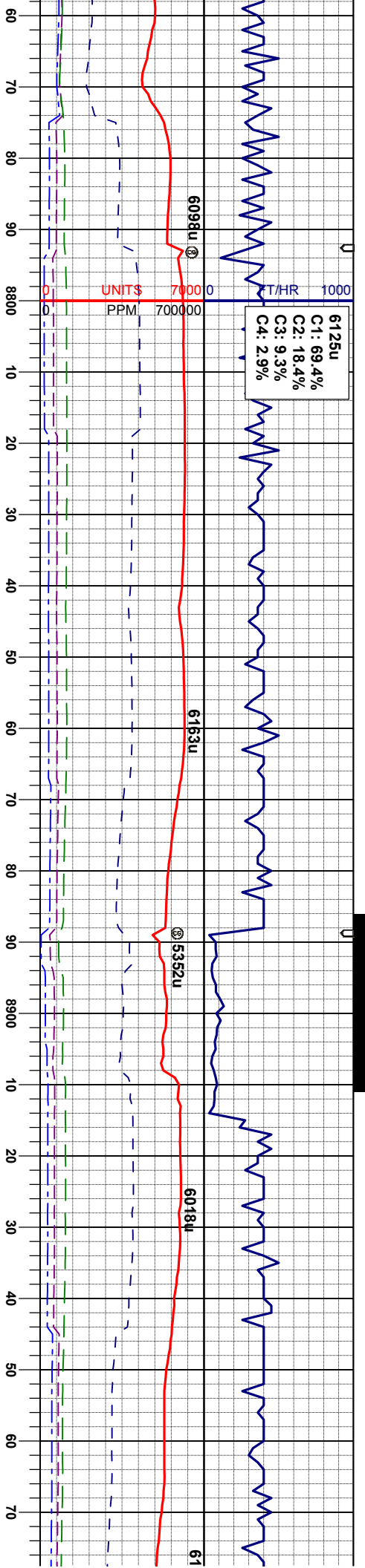
CHK: mgy, occ dkgy, mod sft - mo sbply-sbblky, rthy tex - mot, v calc











MD 8825'  
INC 89.8°  
AZM 92.6°  
TVD 6546.29'

MD 8820'  
INC 88.1°  
AZM 91.8°  
TVD 6548.03'

mgly-gyblk, occdkbrn, blkly-sbply,  
s, mod firm, tr bent, rthy tex, sl mot, v  
calc  
MRL: mgly-gyblk, occdkbrn, blkly-sbply,  
sme fis, mod firm, tr bent, rthy tex, sl mot, v  
calc  
CHK: mgly, occ dkgy, mod sft - mod firm,  
sbply-sbply, rthy tex - mot, v calc

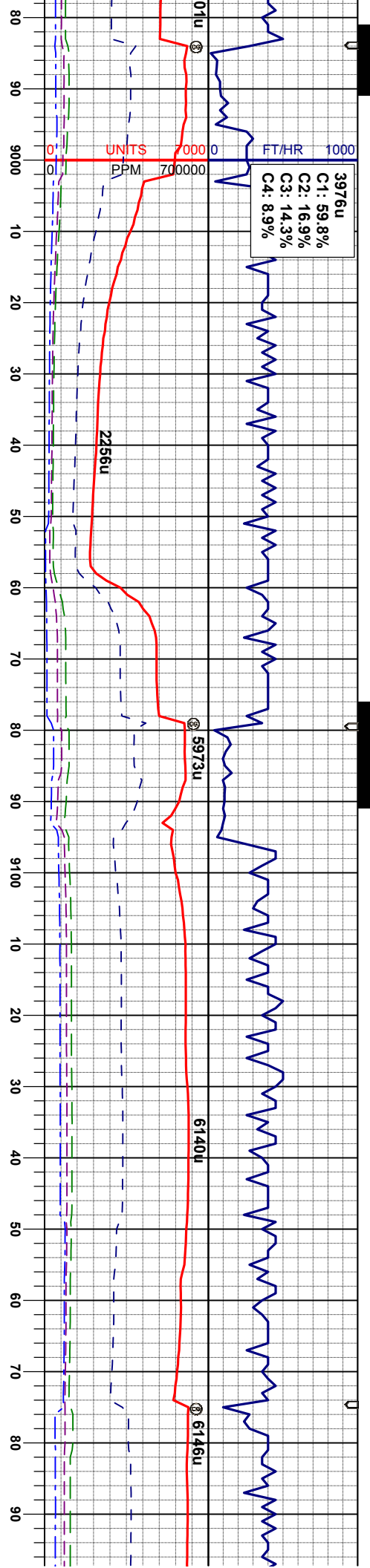
MRL: mgly-gyblk, occdkbrn, blkly-sbply,  
sme fis, mod firm, tr bent, rthy tex, sl mot, v  
calc  
CHK: mgly, occ dkgy, mod sft - mod firm,  
sbply-sbply, rthy tex - mot, v calc

MRL: mgly-gyblk, occdkbrn, blkly-sbply,  
sme fis, mod firm, tr bent, rthy tex, sl mot, v  
calc, grdg -  
CHK: mgly, occ lt gy, occ calc incl, mod sft  
- mod firm, sbply-sbply, rthy tex - mot, v  
calc

MRL: mgly-gyblk, occdkbrn,  
sme fis, mod firm, tr bent  
calc, grdg -  
CHK: mgly, occ lt gy, occ  
- mod firm, sbply-sbply,  
calc







MD 9015'  
INC 87.9°  
AZM 89.2°  
TVD 6551.35'

MD 9110'  
INC 89.3°  
AZM 89.0°  
TVD 6553.67'

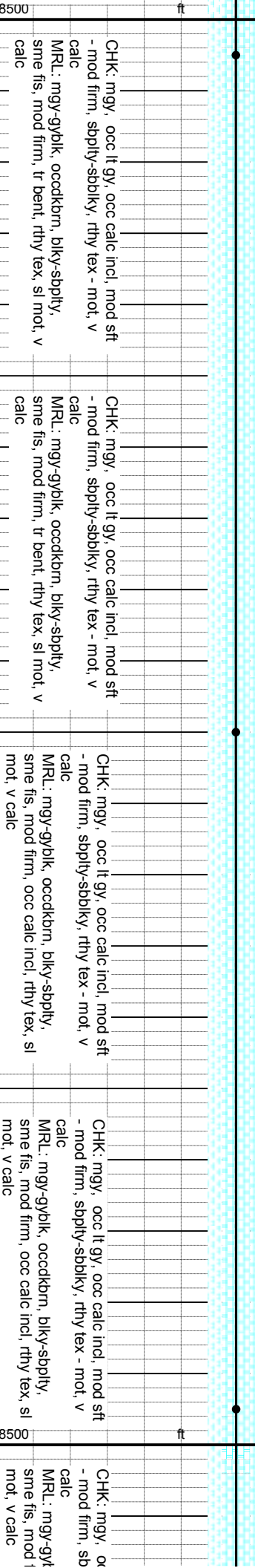
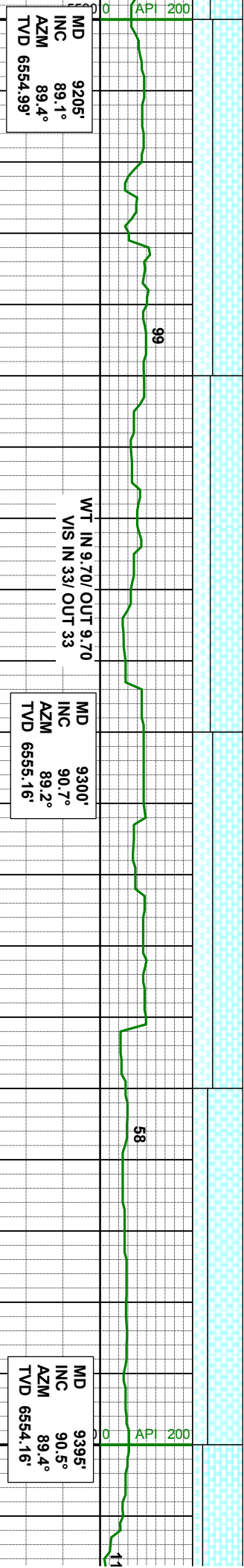
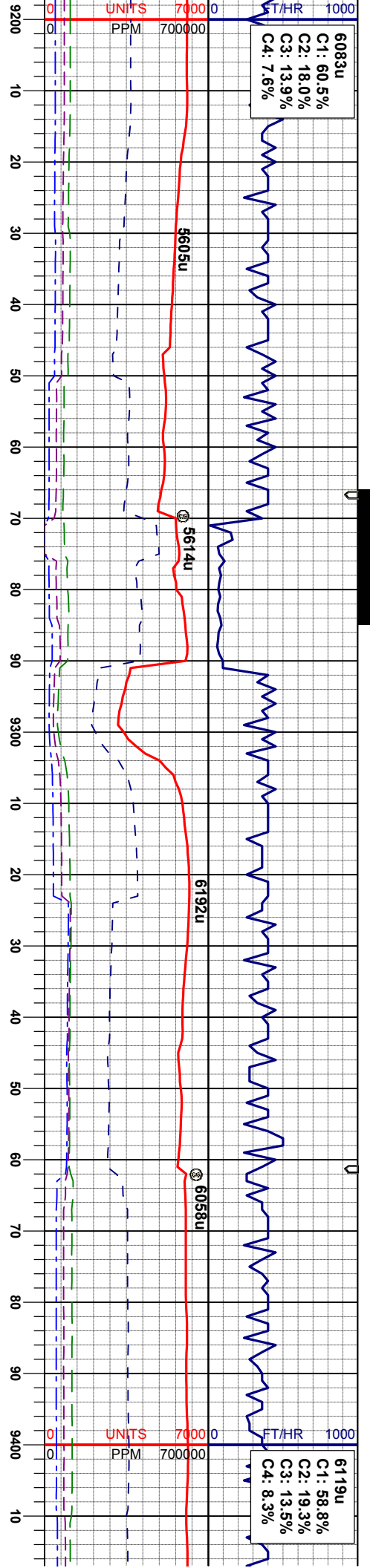
CHK: mgy, occ lt gy, occ calc incl, mod sft - mod firm, sbply-sbblky, rthy tex - mot, v calc  
MRL: mgy-gyblk, occdkbm, blkly-sbply, sme fis, mod firm, tr bent, rthy tex, sl mot, v calc

CHK: mgy, occ lt gy, occ calc incl, mod sft - mod firm, sbply-sbblky, rthy tex - mot, v calc  
MRL: mgy-gyblk, occdkbm, blkly-sbply, sme fis, mod firm, tr bent, rthy tex, sl mot, v calc

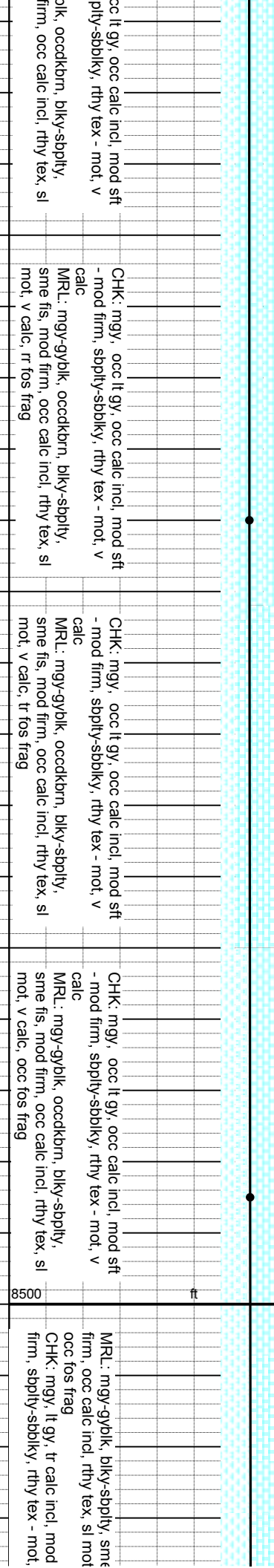
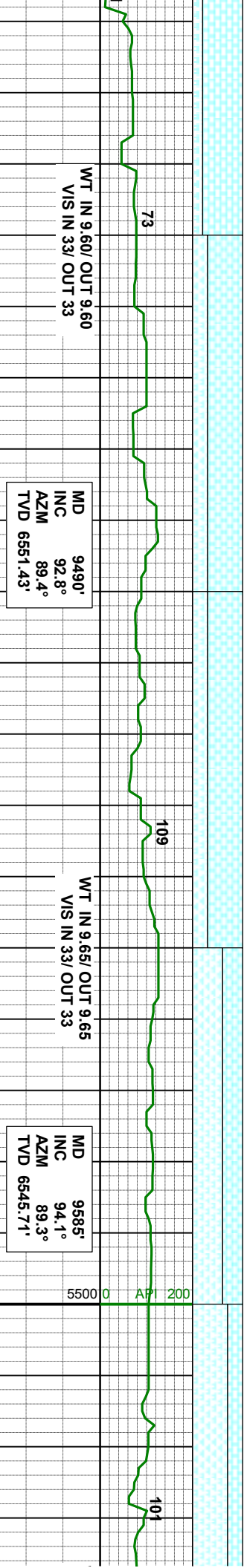
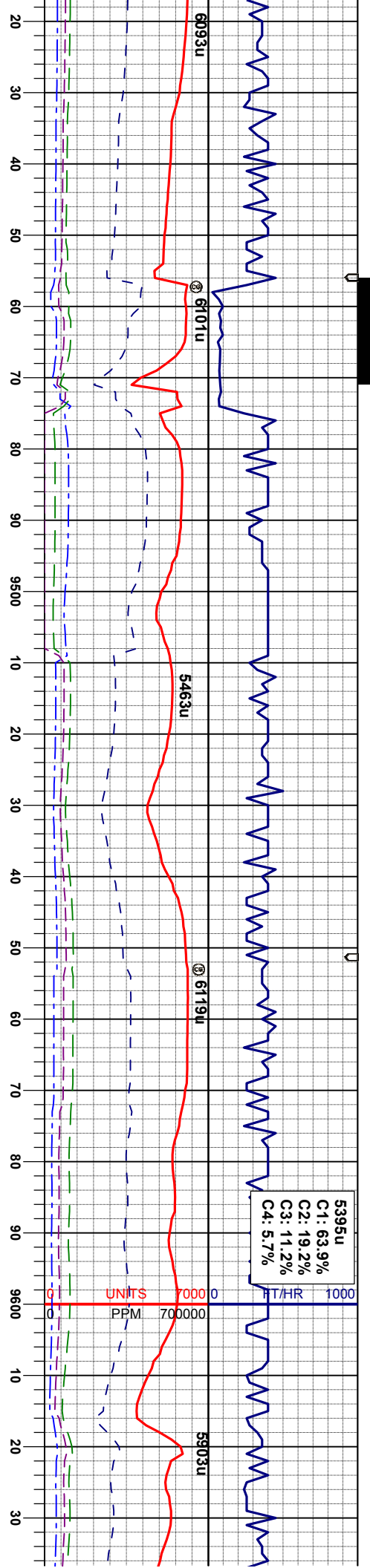
CHK: mgy, occ lt gy, occ calc incl, mod sft - mod firm, sbply-sbblky, rthy tex - mot, v calc  
MRL: mgy-gyblk, occdkbm, blkly-sbply, sme fis, mod firm, tr bent, rthy tex, sl mot, v calc



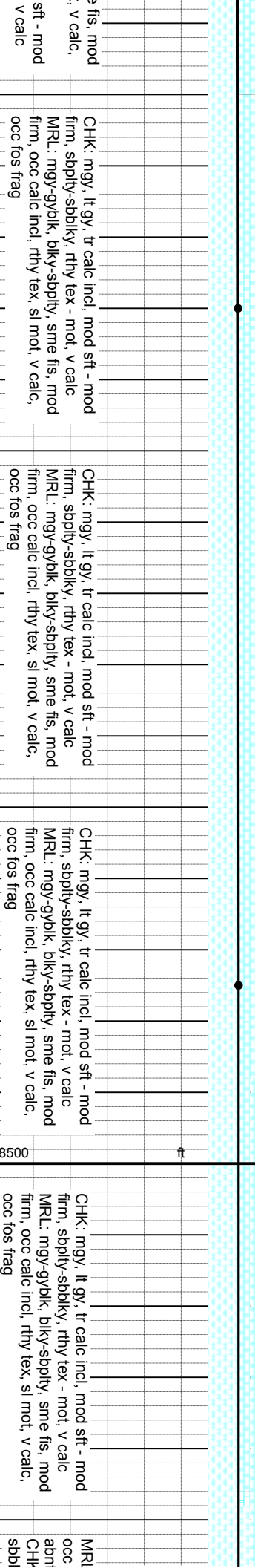
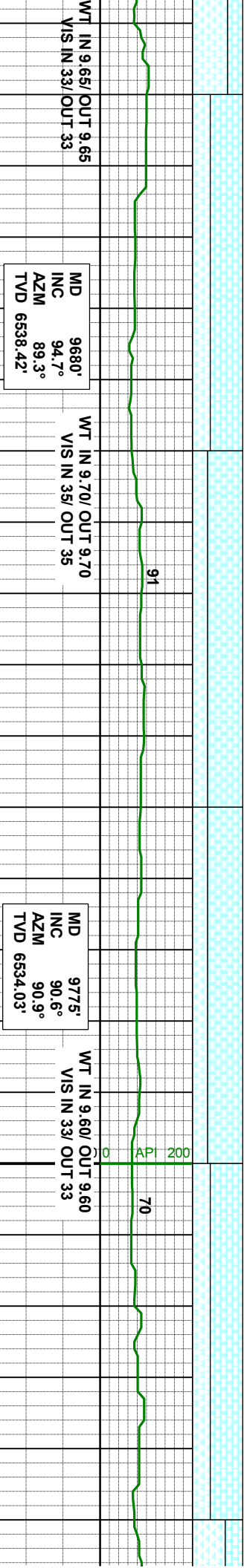
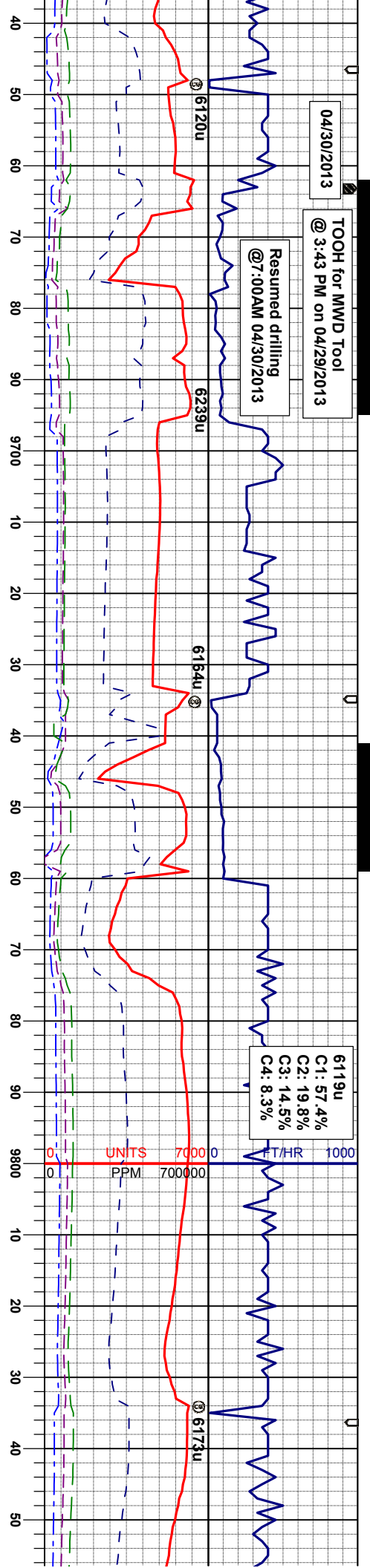




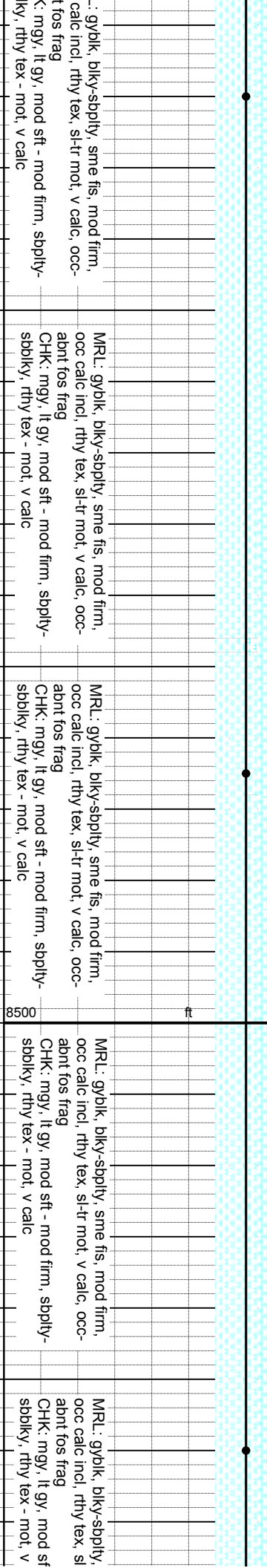
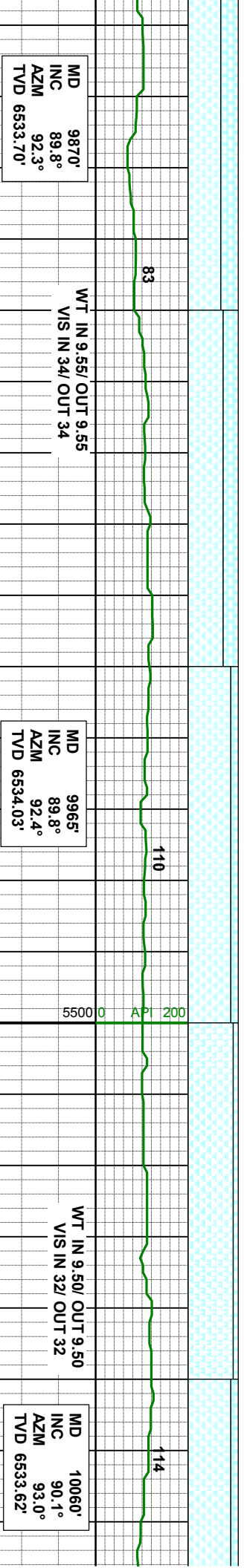
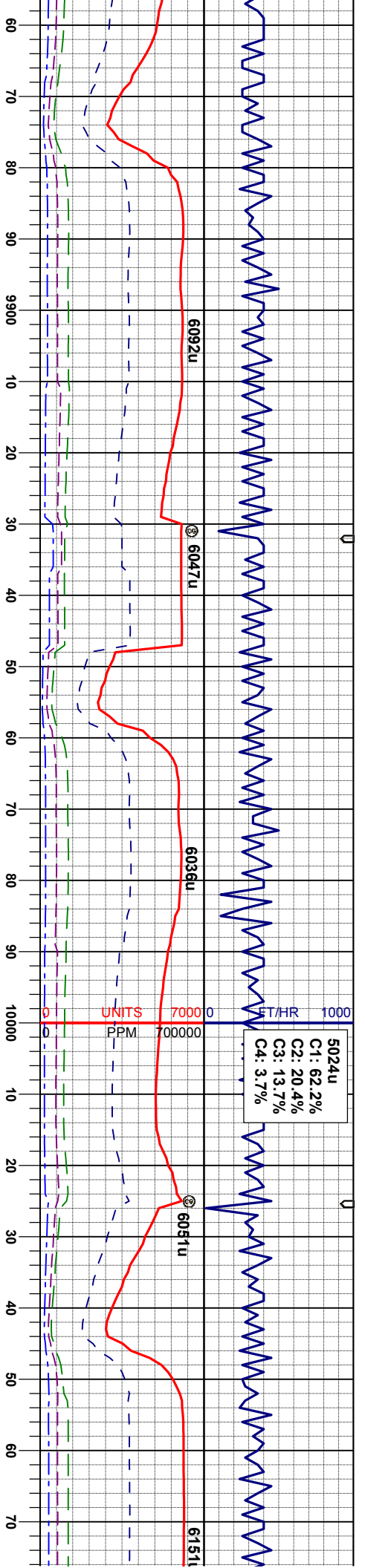




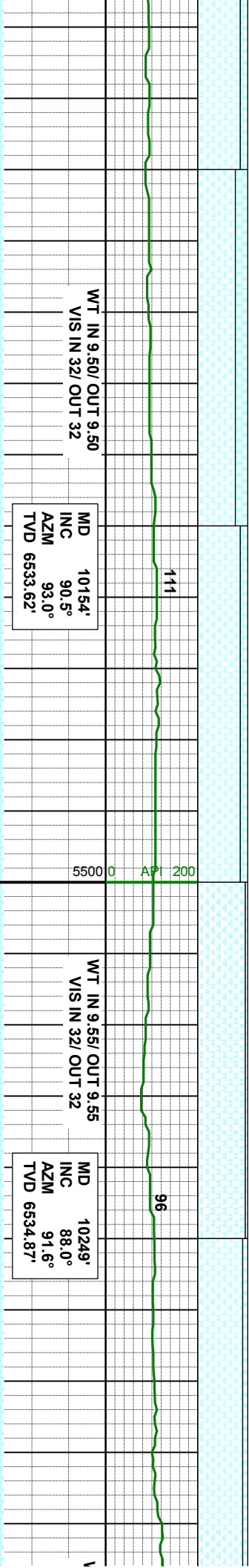


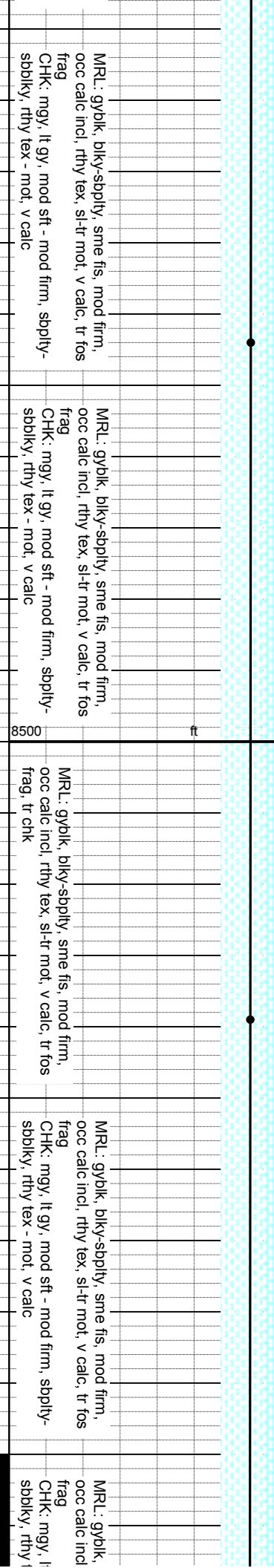
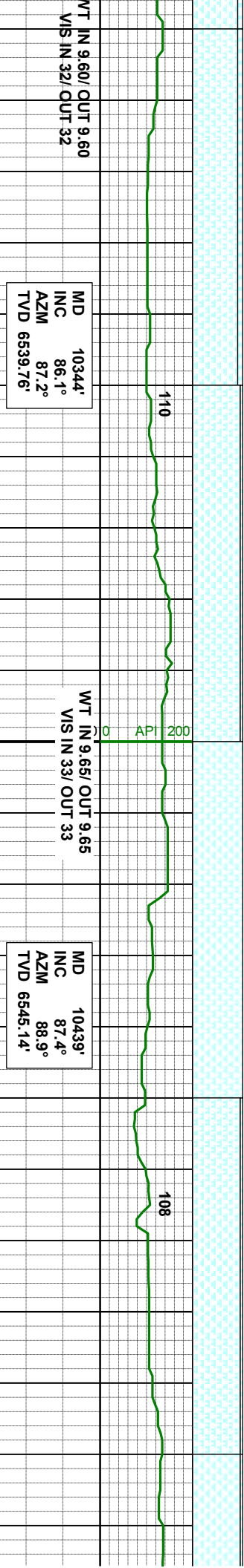
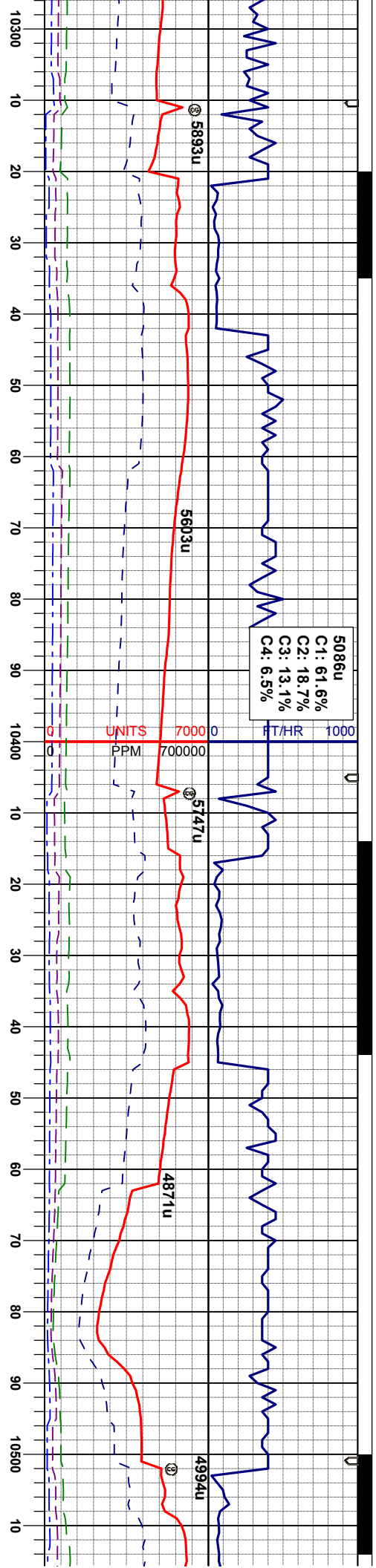




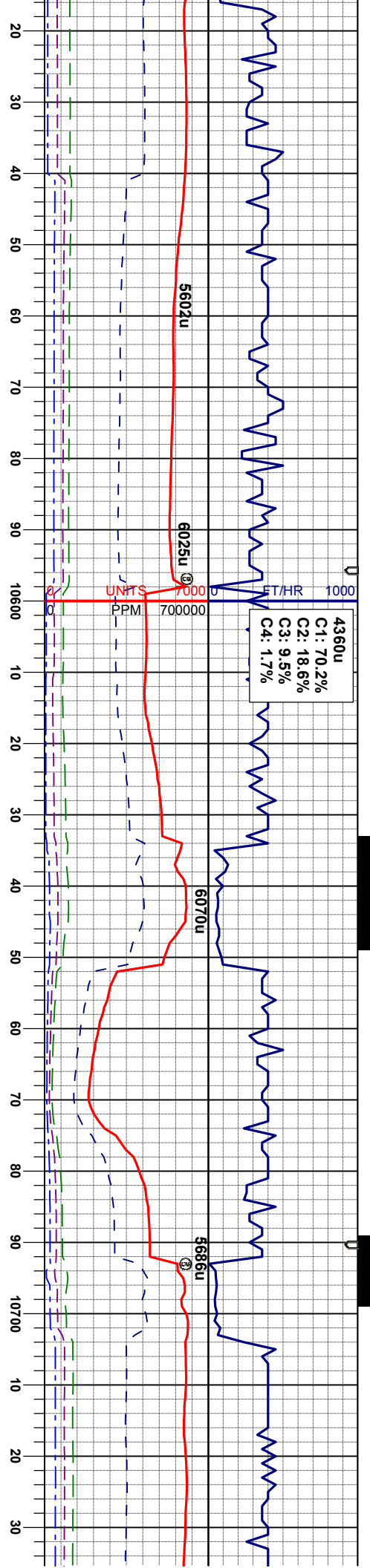












MD 10533'  
INC 89.5°  
AZM 89.0°  
TVD 6547.69'

WT IN 9.55/ OUT 9.55  
VIS IN 33/ OUT 33

MD 10628'  
INC 88.8°  
AZM 88.8°  
TVD 6549.10'

WT IN 9.55/ OUT 9.55  
VIS IN 31/ OUT 31

MD 10723'  
INC 90.4°  
AZM 88.4°  
TVD 6549.76'

biky-spply, sme fis, mod firm,  
rthy tex, sl-tr mot, v calc, tr fos

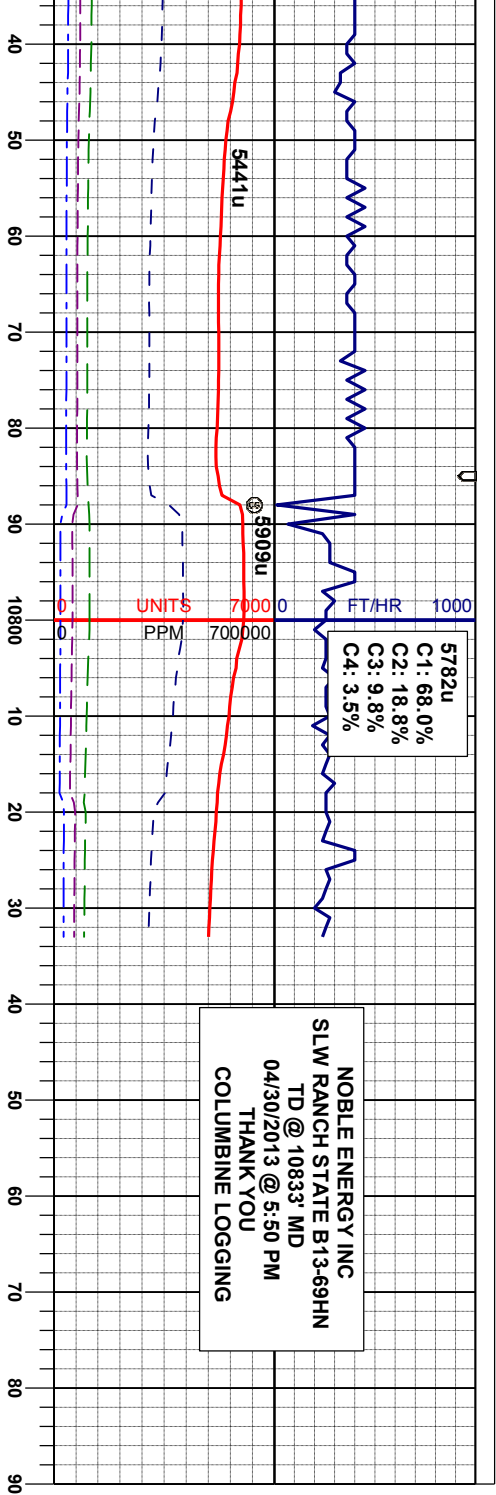
MRU: gyblk, biky-spply, sme fis, mod firm,  
occ calc incl, rthy tex, sl-tr mot, v calc, tr fos  
frag, tr chk

MRU: gyblk, biky-spply, sme fis, mod firm,  
occ calc incl, rthy tex, sl-tr mot, v calc, tr fos  
frag, tr chk

MRU: gyblk, biky-spply, sme fis, mod firm,  
occ calc incl, rthy tex, sl-tr mot, v calc, tr fos  
frag, tr chk

MRU: gyblk, biky-spply, sme fis,  
occ calc incl, rthy tex, sl-tr mot, v  
frag, tr chk





NOBLE ENERGY INC  
SLW RANCH STATE B13-69HN  
TD @ 10833' MD  
04/30/2013 @ 5:50 PM  
THANK YOU  
COLUMBINE LOGGING

MD 10772'  
INC 89.3°  
AZM 87.5°  
TVD 6549.89'

WT IN 9.55/ OUT 9.55  
VIS IN 32 OUT 32

PROJECTION  
MD 10833'  
INC 89.3°  
AZM 87.5°  
TVD 6550.63'

NOBLE ENERGY INC  
SLW RANCH STATE B13-69HN  
TD @ 10833' MD

MRL: gyblk, blkly-sbply, sme fis, mod firm,  
occ calc incl, rthy tex, sl-tr mot, v calc, tr fos  
frag,  
CHK: mgy, lt gy, mod sft - mod firm, sbply-  
sbblky, rthy tex - mot, v calc

mod firm,  
calc, tr fos

