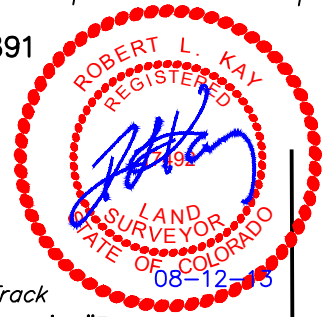


# AXIA ENERGY

## LOCATION DRAWING FOR

BULLDOG #17-21H-891, #17-31H-891 & #8-34V-891  
SECTION 17, T8N, R91W, 6th. P.M.  
NW 1/4 NE 1/4

FIGURE #5



LR SMITH  
INVESTMENTS, LLC

NW Cor. Sec. 17  
1910 G.L.O. Brass Cap,  
0.6' Below Ground  
Lat: 40.658942°  
Long: 107.638652°

S89°27'47"E  
2642.57' (Meas.)

1910 G.L.O. Brass Cap,  
0.8' High  
Lat: 40.658877°  
Long: 107.629131°

Existing Drainage

Existing 2-Track  
N89°45'24"E  
2625.59' (Meas.)

Section Line

1910 G.L.O. Brass Cap,  
1.0' High  
Lat: 40.658910°  
Long: 107.619670°

Proposed  
Access Road

Existing Drainage

County Road 3

LR SMITH  
INVESTMENTS, LLC

1/4 Section Line



SCALE

DATE: 01-15-13  
DRAWN BY: J.G.G.  
REV: 04-01-13  
REV: 08-12-13 M.D.

### FEATURE TABLE

EXISTING FEATURE	DIRECTION	LENGTH
PUBLIC ROAD (CNTY. RD. 3)	S41°W	1072'
PROPERTY LINE	EAST	2128'
SURFACE WATER (CREEK)	WEST	806'
EXISTING POWER LINE	S75°W	948'
BUILDING	NONE WITHIN 1 MILE RADIUS	
RAILROAD	S21°E	10 MILES

1/4 Section Line

17

1/16 Section Line

Section Line

1910 G.L.O. Brass Cap,  
0.9' High  
Lat: 40.651685°  
Long: 107.619629°

S00°14'13"E - 2632.93' (Meas.)

### PLANT COMMUNITY

- ☐ DISTURBED GRASSLAND
- ☐ NATIVE GRASSLAND
- ☐ SHRUB LAND
- ☐ PLAINS RIPARIAN
- ☐ MOUNTAIN RIPARIAN
- ☐ FOREST LAND
- ☐ WETLANDS AQUATIC
- ☐ ALPINE
- ☐ OTHER (Describe): \_\_\_\_\_

### CURRENT LAND USE

- CROP LAND: ☐ IRRIGATED ☐ DRY LAND ☐ IMPROVED PASTURE ☐ HAY MEADOW ☐ CRP  
NON-CROP LAND: ☐ RANGELAND ☐ TIMBER ☐ RECREATIONAL ☐ OTHER (Describe) \_\_\_\_\_  
SUBDIVIDED: ☐ INDUSTRIAL ☐ COMMERCIAL ☐ RESIDENTIAL \_\_\_\_\_

### FUTURE LAND USE

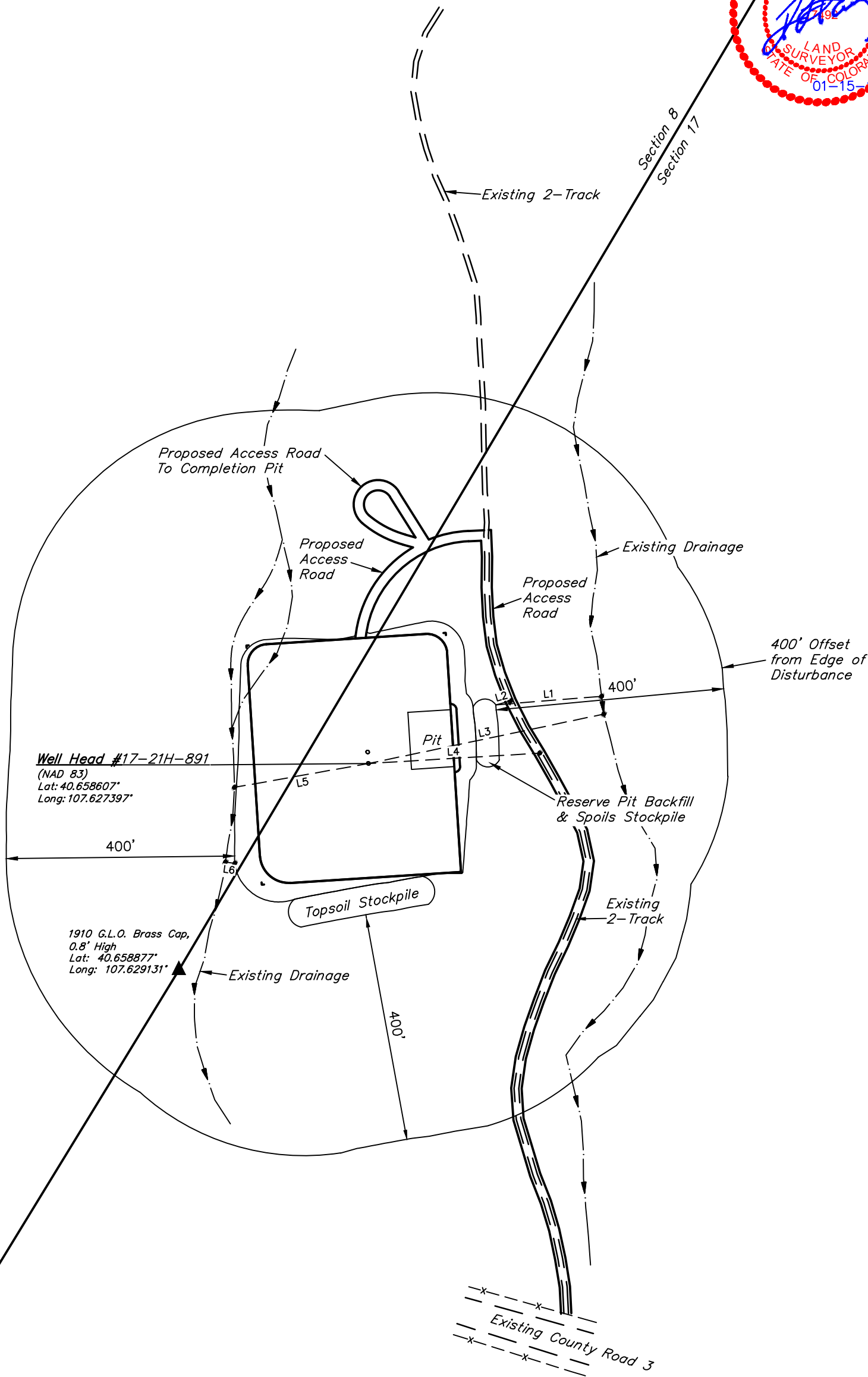
- CROP LAND: ☐ IRRIGATED ☐ DRY LAND ☐ IMPROVED PASTURE ☐ HAY MEADOW ☐ CRP  
NON-CROP LAND: ☐ RANGELAND ☐ TIMBER ☐ RECREATIONAL ☐ OTHER (Describe) \_\_\_\_\_  
SUBDIVIDED: ☐ INDUSTRIAL ☐ COMMERCIAL ☐ RESIDENTIAL \_\_\_\_\_



AXIA ENERGY  
LOCATION DRAWING DETAIL FOR  
BULLDOG #17-21H-891 & #17-31H-891  
SECTION 17, T8N, R91W, 6th. P.M.  
NW 1/4 NE 1/4

FIGURE #5A

SCALE: 1" = 200'  
DATE: 01-15-13  
DRAWN BY: J.G.G.



LINE TABLE		
LINE	DIRECTION	LENGTH
L1	S35°34'22"E	185.96'
L2	S46°15'24"E	26.94'
L3	S42°46'39"E	421.58'
L4	S34°23'09"E	300.73'
L5	N41°00'41"W	238.16'
L6	N22°59'18"W	16.64'