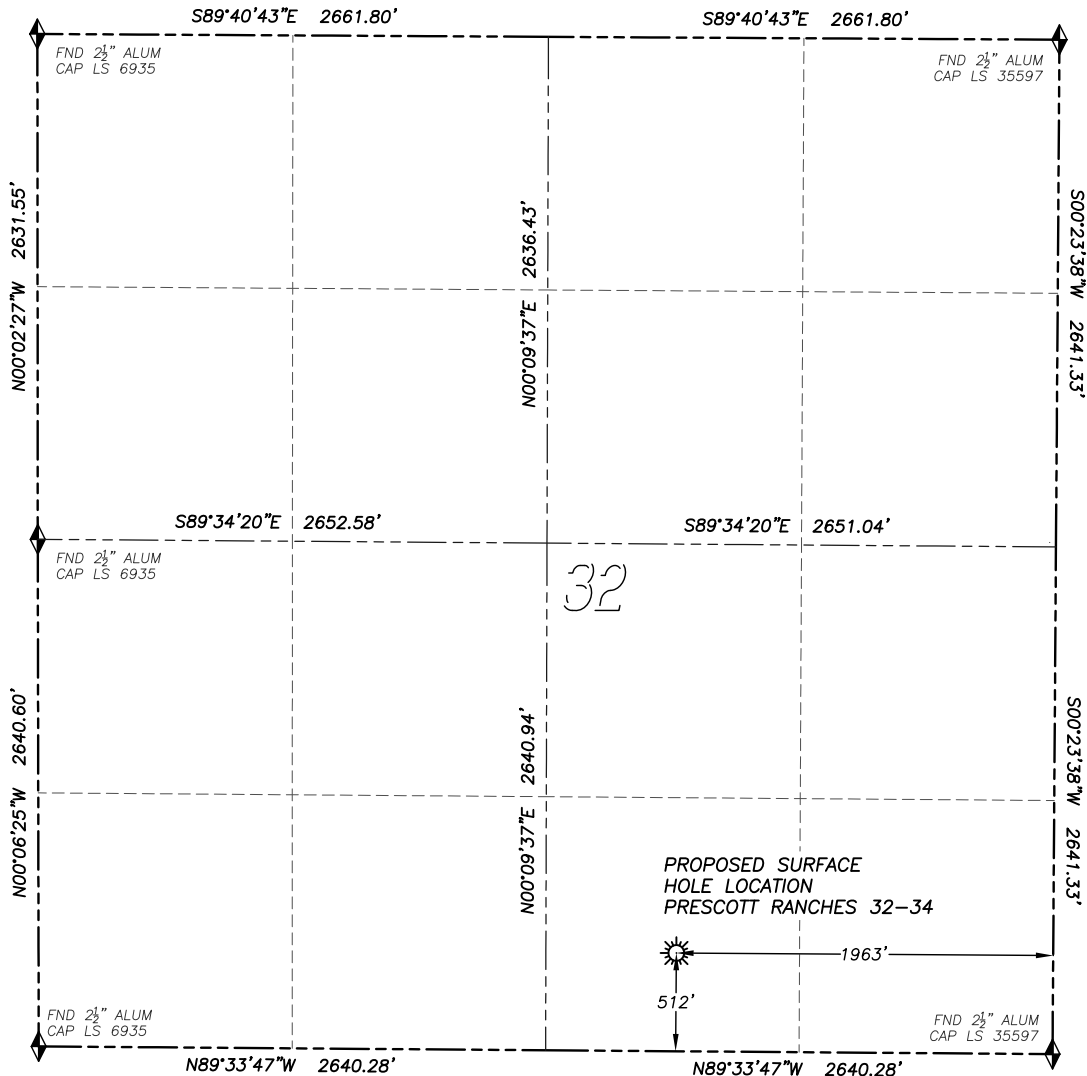


WELL LOCATION CERTIFICATE PRESCOTT RANCHES 32-34

SECTION 32, TOWNSHIP 12 SOUTH, RANGE 59 WEST OF THE 6TH PRINCIPAL MERIDIAN



0 500 1000
SCALE: 1" = 1000'

LEGEND

- ◆ FOUND MONUMENT AS DESCRIBED
- ☀ PROPOSED WELL
- ⊙ EXISTING WELL
- BOTTOM HOLE
- ⊗ ABANDONED WELL
- ◇ CALCULATED POSITION

NAD 83 LATITUDE AND LONGITUDE

PRESCOTT RANCHES 32-34

SURFACE HOLE:

LATITUDE: N38.95688°
 LONGITUDE: W104.02248°
 ELEVATION: 6066'
 FOOTAGE: 512' FSL, 1963' FEL
 PDOP: 1.6
 QTR/QTR: SW4/SE4
 PROP LINE: 512'± SOUTH

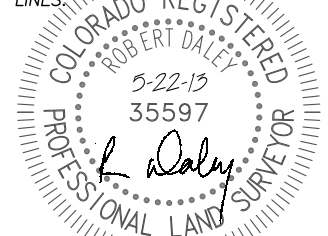
NEAREST EXISTING WELL:
 THERE ARE NO EXISTING
 WELLS IN THIS SECTION

IN ACCORDANCE WITH A REQUEST FROM MUSTANG CREEK OPERATING LLC., DALEY LAND SURVEYING, INC. HAS DETERMINED THE SURFACE LOCATION OF THE PRESCOTT RANCHES 32-34 WELL TO BE 512' FSL, 1963' FEL, AS MEASURED AT NINETY (90) DEGREES FROM THE SECTION LINES OF SECTION 32, TOWNSHIP 12 SOUTH, RANGE 59 WEST OF THE 6TH PRINCIPAL MERIDIAN, ELBERT COUNTY, COLORADO.

I HEREBY CERTIFY THAT THIS WELL LOCATION CERTIFICATE WAS PREPARED BY ME OR UNDER MY DIRECT SUPERVISION, THAT THE WORK WAS COMPLETED ON 5/17/2013 FOR AND ON BEHALF OF MUSTANG CREEK OPERATING LLC., AND THAT THIS MAP DOES NOT REPRESENT A BOUNDARY SURVEY, IT IS NOT A LAND SURVEY PLAT OR AN IMPROVEMENT SURVEY PLAT AND IT IS NOT TO BE RELIED UPON FOR THE ESTABLISHMENT OF FENCE, BUILDING OR OTHER FUTURE IMPROVEMENT LINES.

NOTES:

- 1) BEARINGS FOR THIS MAP ARE ASSUMED AND BASED UPON GPS OBSERVATIONS MADE BETWEEN MONUMENTS LOCATED AT THE SOUTHWEST CORNER AND WEST QUARTER CORNER OF SECTION 32, T.12S., R.59W.
- 2) HORIZONTAL DATUM IS NAD83.
- 3) VERTICAL DATUM IS NAVD88 AND ORIGINATES FROM THE LOCAL C.O.R.S. NETWORK, UTILIZING THE GEOID09 MODEL.
- 4) SEE LOCATION DRAWING FOR VISIBLE IMPROVEMENTS WITHIN 400' OF PROPOSED DISTURBED AREA.
- 5) SURFACE USE: RANGELAND.



FOR AND ON BEHALF OF
 DALEY LAND SURVEYING INC.,
 Robert Daley, PLS 35597