

CHEVRON - MID-CONTINENT
760 Horizon Dr
Grand Junction, CO 81506

SKR 598-25-AV-6

Stage 7
Garfield County, Colorado

Sales Order: 900621864

Post Job Report

For: Kieth Hejl
Date: Sunday, July 28, 2013

Notice: Although the information contained in this report is based on sound engineering practices, the copyright owner(s) does (do) not accept any responsibility whatsoever, in negligence or otherwise, for any loss or damage arising from the possession or use of the report whether in terms of correctness or otherwise. The application, therefore, by the user of this report or any part thereof, is solely at the user's own risk.

HALLIBURTON

Table of Contents

| | | |
|-----|-----------------------------|----|
| 1.0 | Well Information | 3 |
| 1.1 | Customer Information | 3 |
| 1.2 | Pipe Information | 4 |
| 1.3 | Perforation Intervals | 4 |
| 2.0 | Actual Stage Summary | 5 |
| 2.1 | Stage Summary | 5 |
| 3.0 | Performance Highlights..... | 7 |
| 3.1 | Treatment Summary | 7 |
| 3.2 | Job Event Log | 9 |
| 4.0 | Attachments..... | 11 |
| 4.1 | Treating Chart | 11 |
| 4.2 | Chemical Chart | 12 |
| 4.3 | Averages Chart | 13 |
| 4.4 | Net Pressure Plot | 14 |

1.0 WELL INFORMATION

1.1 Customer Information

| | |
|----------------------------|------------------------------|
| Customer | CHEVRON - MID-CONTINENT EBIZ |
| Sales Order | 900621864 |
| Well Name | SKR |
| Well Number | 598-25-AV-6 |
| Job Date | 28-Jul-2013 |
| County | Garfield |
| State | Colorado |
| Country | United States of America |
| H2S Present | Unknown |
| Customer Representative | Kieth Hejl |
| Halliburton Representative | T. Nowak |

1.2 Pipe Information

| Equipment | Top MD ft | Bottom MD ft | OD in | ID in | Grade | Weight lb/ft |
|--------------|--------------|--------------------|----------|----------|-------|-----------------|
| Surface Pipe | 0.0 | 100.0 | 5.000 | 4.000 | | |
| Casing | 0.0 | 4965.0 | 4.500 | 4.000 | N-80 | 11.60 |

1.3 Perforation Intervals

| Top MD ft | Bottom MD ft | Number of Shots | Perf Density spf | Perf Diameter in |
|--------------|-----------------|-----------------|---------------------|---------------------|
| 4576.0 | 4763.0 | 27 | 0.1 | 0.350 |

2.0 ACTUAL STAGE SUMMARY

2.1 Stage Summary

| Stage Number | Stage Time | Max Treat Pr psi | Max Slurry Rate bpm | Max Wellhead Rate bpm | Max Prop Conc lb/gal | Avg Treating Pressure psi | Avg Clean Rate bpm |
|--------------|-----------------------|---------------------|------------------------|-----------------------------|-------------------------|---------------------------------|-----------------------|
| 1 | 28-Jul-13 16:31:12 | 4225 | 61.6 | 61.6 | 0.00 | 1460 | 20.8 |
| 2 | 28-Jul-13 16:34:54 | 4902 | 63.7 | 63.7 | 0.31 | 4603 | 63.8 |
| 3 | 28-Jul-13 17:08:13 | 4433 | 63.9 | 63.9 | 0.56 | 3923 | 63.7 |
| 4 | 28-Jul-13 17:30:45 | 4362 | 63.8 | 63.8 | 0.82 | 4069 | 62.9 |
| 5 | 28-Jul-13 17:46:21 | 5230 | 63.6 | 63.6 | 1.01 | 4602 | 62.0 |
| 6 | 28-Jul-13 17:51:28 | 5465 | 63.6 | 63.6 | 0.18 | 4954 | 61.3 |

| Stage Number | Stage Time | Avg Slurry Rate bpm | Clean Volume gal | Slurry Volume gal | Prop Mass 100*lb |
|--------------|--------------------|------------------------|---------------------|----------------------|---------------------|
| 1 | 28-Jul-13 16:31:12 | 21.8 | 2507 | 2656 | 0.00 |
| 2 | 28-Jul-13 16:34:54 | 63.3 | 9906 | 9826 | 21.56 |
| 3 | 28-Jul-13 17:08:13 | 63.8 | 89134 | 89282 | 398.30 |
| 4 | 28-Jul-13 17:30:45 | 63.7 | 59519 | 60324 | 401.07 |
| 5 | 28-Jul-13 17:46:21 | 63.5 | 40590 | 41623 | 374.83 |
| 6 | 28-Jul-13 17:51:28 | 59.2 | 7495 | 7160 | 0.00 |
| Total | | | 209151 | 210871 | 1195.76 |

3.0 PERFORMANCE HIGHLIGHTS

3.1 Treatment Summary

| | | |
|------------|--------------------|--|
| Start Time | 28-Jul-13 16:17:36 | |
| End Time | 28-Jul-13 17:51:28 | |

| SKR 598-25-AV-06 Stage 7 | | |
|-----------------------------|-------------|------|
| 7/27/2013 | | |
| Engineering Notes | | |
| Engineer on Location | Megan Sprot | |
| ISDP | 1299 | psi |
| Initial Pressure(Breakdown) | 2367 | psi |
| Max Pressure | 5230 | psi |
| Average Pressure | 4140 | psi |
| Max Rate | 63.87 | bpm |
| Average Rate | 63.75 | bpm |
| Proppant Design Volume | 131,175 | lbs |
| Proppant in Formation | 127,200 | lbs |
| FR-66 Used | 40 | gals |
| BE-7 Used | 148 | gals |
| SandWedge WF | 137 | lbs |
| SCW-4212 Used | 32 | lbs |

| | | |
|----------------------|---------|-------|
| Clean Volume | 4980 | bbls |
| Start Time | 4:28 PM | HH:MM |
| End Time | 5:50 PM | HH:MM |
| Job Notes: | | |
| Pumped to completion | | |

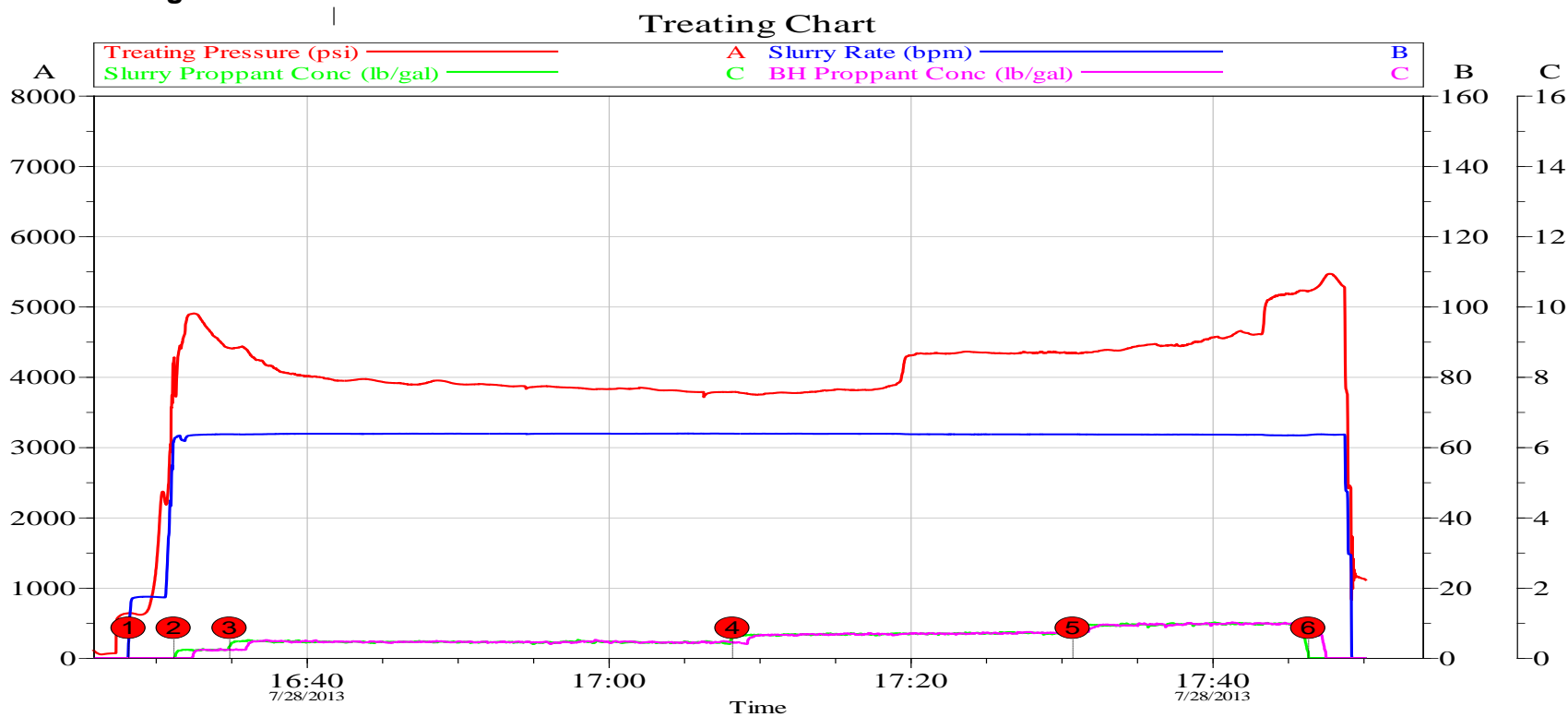
Disclaimer: The average and maximum values (except volumes and bottom hole values) are based on the start and end averaging times.

3.2 Job Event Log

| Time | Comment | Treating Pressure psi | N2 Pressure psi | Slurry Rate bpm | Treatment Clean Volume gal | Treatment Slurry Volume gal |
|-----------------------|----------------------|--------------------------|--------------------|--------------------|-------------------------------|--------------------------------|
| 28-Jul-13 16:17:36 | Starting Job | | | | | |
| 16:28:13 | Pad | 638 | 26 | 5.0 | 0 | 4 |
| 16:30:29 | Break Formation | 2367 | 26 | 17.3 | 1583 | 1616 |
| 16:31:13 | Proppant Laden Fluid | 4259 | 25 | 61.6 | 2507 | 2656 |
| 16:34:55 | Proppant Laden Fluid | 4409 | 26 | 63.7 | 12413 | 12482 |
| 17:08:14 | Proppant Laden Fluid | 3785 | 27 | 63.8 | 101548 | 101764 |
| 17:30:46 | Proppant Laden Fluid | 4342 | 29 | 63.6 | 161066 | 162088 |
| 17:46:22 | Flush | 5217 | 31 | 63.4 | 201656 | 203711 |
| 17:49:14 | ISDP | 1293 | 33 | 0.8 | 209069 | 210871 |
| 17:51:30 | Ending Job | -17 | 33 | 0.0 | 209151 | 210871 |

4.0 ATTACHMENTS

4.1 Treating Chart

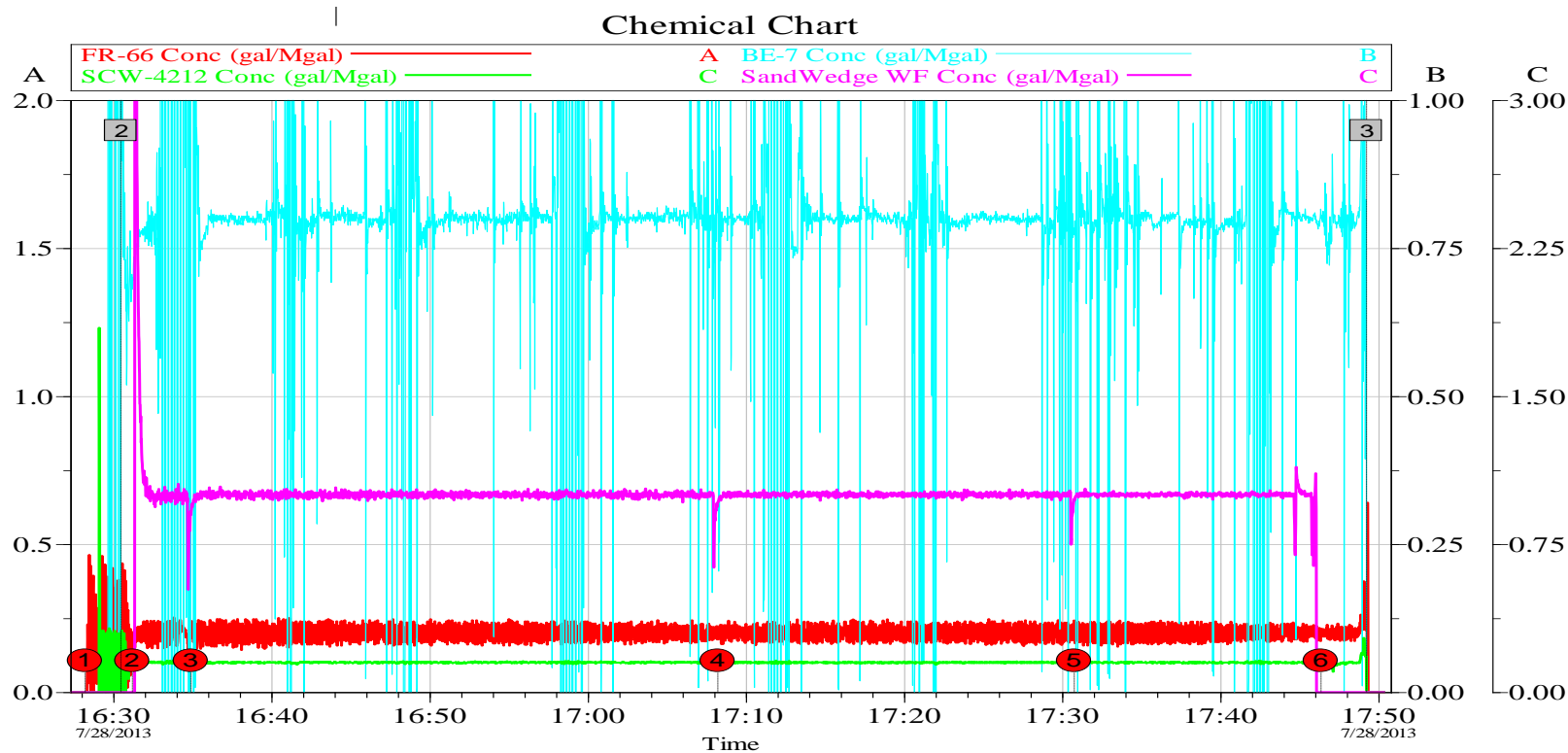


Customer: CHEVRON - MID-CONTINENT EBIZ
Well Description: SKR 598-25-AV-6

Job Date: 28-Jul-2013
UWI:

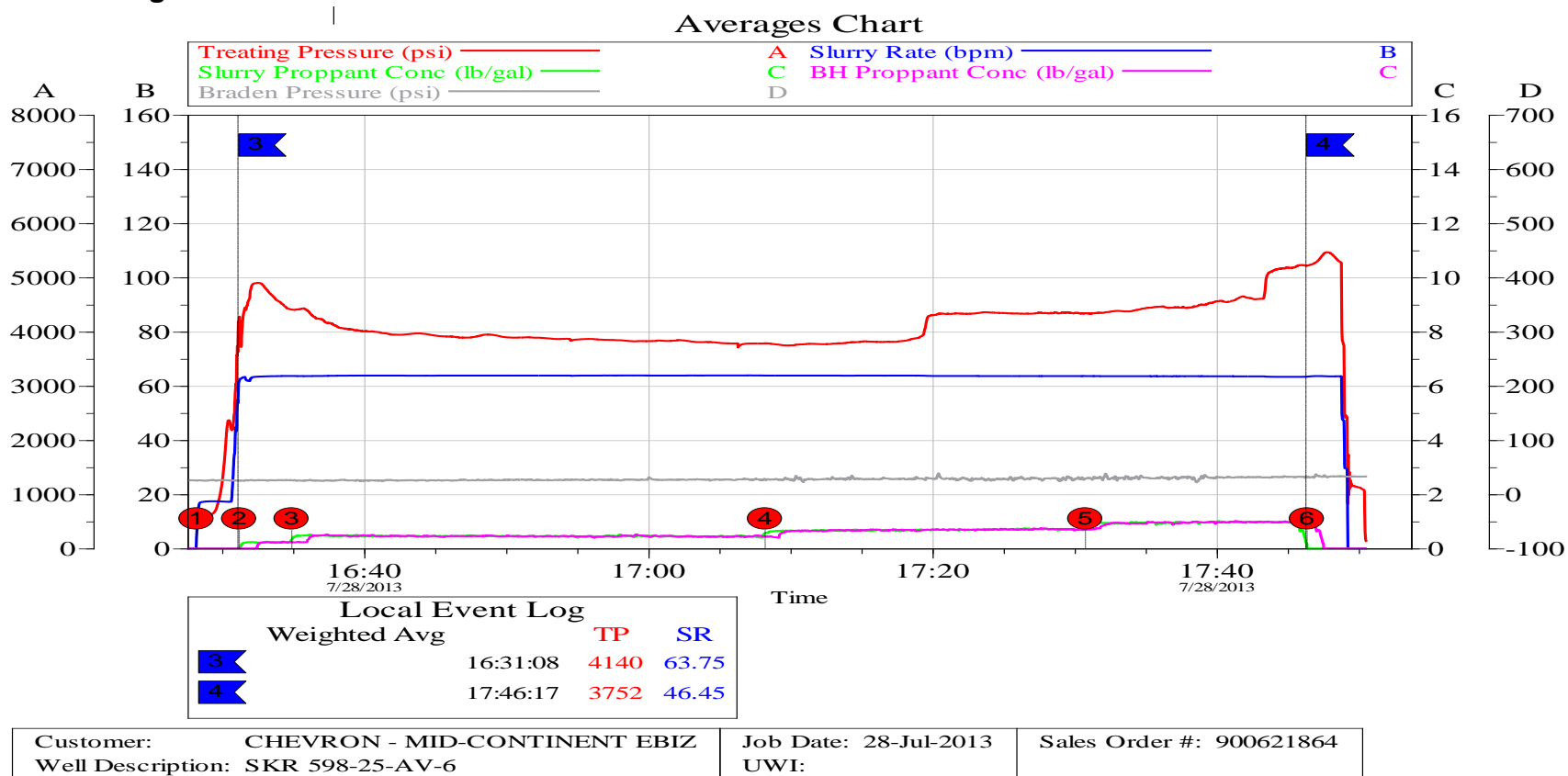
Sales Order #: 900621864

4.2 Chemical Chart

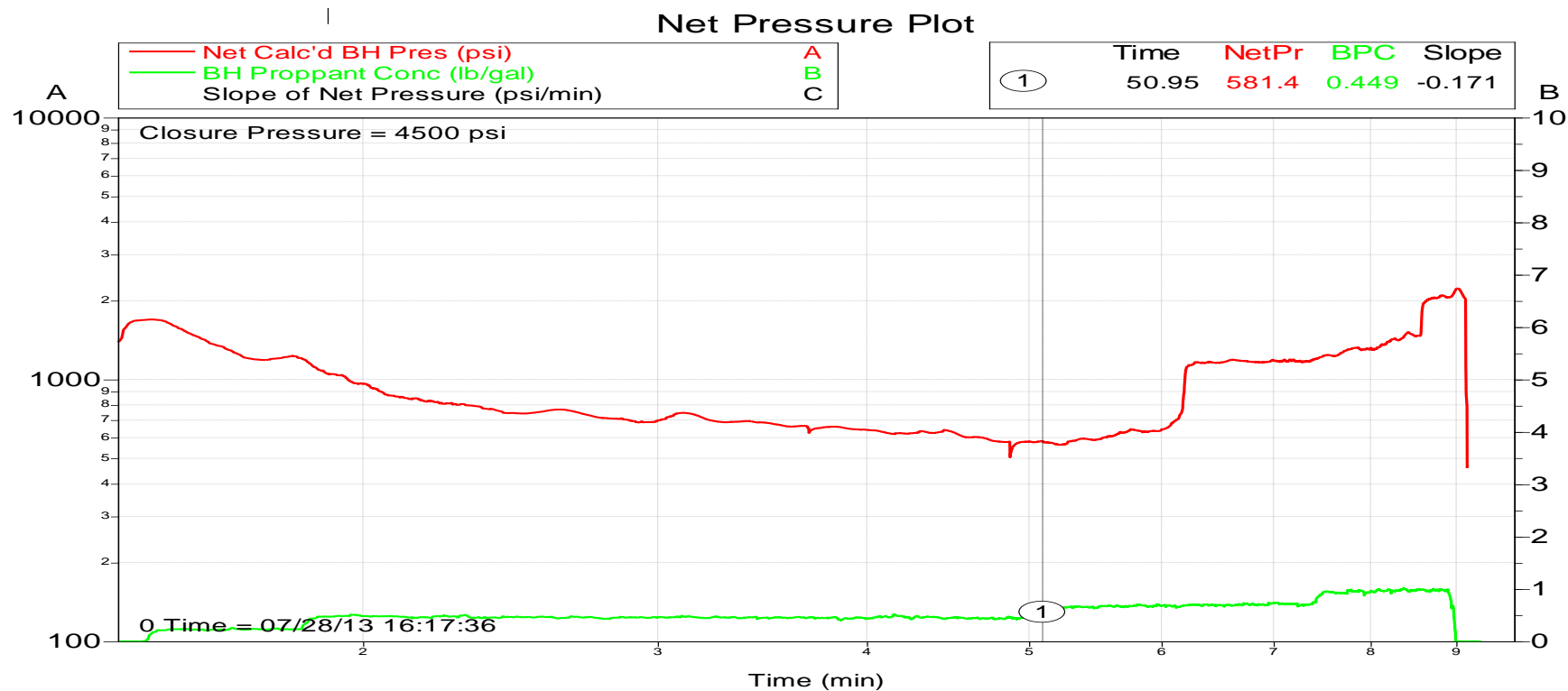


| | | |
|--|-----------------------|--------------------------|
| Customer: CHEVRON - MID-CONTINENT EBIZ | Job Date: 28-Jul-2013 | Sales Order #: 900621864 |
| Well Description: SKR 598-25-AV-6 | UWI: | |

4.3 Averages Chart



4.4 Net Pressure Plot



Customer: CHEVRON - MID-CONTINENT EBIZ
Well Description: SKR 598-25-AV-6

Job Date: 28-Jul-2013
UWI:

Sales Order #: 900621864