

**CHEVRON - MID-CONTINENT**  
**760 Horizon Dr**  
**Grand Junction, CO 81506**

SKR 598-25-AV-06

Stage 2  
Garfield County, Colorado

Sales Order: 900621864

## **Post Job Report**

For: Kieth Hejl  
Date: Monday, July 29, 2013

Notice: Although the information contained in this report is based on sound engineering practices, the copyright owner(s) does (do) not accept any responsibility whatsoever, in negligence or otherwise, for any loss or damage arising from the possession or use of the report whether in terms of correctness or otherwise. The application, therefore, by the user of this report or any part thereof, is solely at the user's own risk.

**HALLIBURTON**

## Table of Contents

1.0	Well Information .....	3
1.1	Customer Information .....	3
1.2	Pipe Information .....	4
1.3	Perforation Intervals .....	4
2.0	Actual Stage Summary .....	5
2.1	Stage Summary .....	5
3.0	Performance Highlights.....	7
3.1	Treatment Summary .....	7
3.2	Job Event Log .....	9
4.0	Attachments.....	12
4.1	Treating Chart .....	12
4.2	Chemical Chart .....	13
4.3	Averages Chart .....	14
4.4	Net Pressure Plot .....	15

## 1.0 WELL INFORMATION

### 1.1 Customer Information

#### Customer

CHEVRON - MID-CONTINENT

Sales Order

900621864

Well Name

SKR

Well Number

598-25-AV-06

Job Date

29-Jul-2013

County

Garfield

State

Colorado

UWI/API

05-045-15187

Country

United States of America

H2S Present

Unknown

Customer Representative

Kieth Hejl

Halliburton Representative

T. Nowak

**1.2 Pipe Information**

Equipment	Top MD ft	Bottom MD ft	OD in	ID in	Grade	Weight lb/ft
Surface Pipe	0.0	100.0	5.000	4.000		
Casing	0.0	4965.0	4.500	4.000	N-80	11.60

**1.3 Perforation Intervals**

Top MD ft	Bottom MD ft	Number of Shots	Perf Density spf	Perf Diameter in
4396.0	4534.0	27	0.2	0.350

## 2.0 ACTUAL STAGE SUMMARY

### 2.1 Stage Summary

Stage Number	Stage Time	Max Treat Pr psi	Max Slurry Rate bpm	Max Wellhead Rate bpm	Max Prop Conc lb/gal	Avg Treating Pressure psi	Avg Clean Rate bpm
1	29-Jul-13 16:17:35	3536	59.2	59.2	0.00	1928	28.1
2	29-Jul-13 16:21:06	5161	62.6	62.6	0.25	4669	63.1
3	29-Jul-13 16:52:56	5264	62.6	62.6	3.13	5120	62.6
4	29-Jul-13 17:14:19	5228	62.3	62.3	0.87	5008	62.1
5	29-Jul-13 17:31:34	5575	62.2	62.2	1.86	5027	61.4
6	29-Jul-13 17:35:14	6066	60.3	60.3	0.21	5370	57.3
7	29-Jul-13 17:35:38	0	0.0	0.0	0.00	0	0.0

Stage Number	Stage Time	Avg Slurry Rate bpm	Clean Volume gal	Slurry Volume gal	Prop Mass 100*lb
1	29-Jul-13 16:17:35	31.0	1145	1298	0.00
2	29-Jul-13 16:21:06	62.3	9318	9193	17.29
3	29-Jul-13 16:52:56	62.3	83724	83348	341.95
4	29-Jul-13 17:14:19	62.2	55761	55854	341.64
5	29-Jul-13 17:31:34	62.1	44530	45003	304.55
6	29-Jul-13 17:35:14	55.0	7343	7002	0.00
7	29-Jul-13 17:35:38	0.0	0	0	0.00
Total			201821	201698	1005.43

### 3.0 PERFORMANCE HIGHLIGHTS

#### 3.1 Treatment Summary

Start Time	29-Jul-13 16:08:09	
End Time	29-Jul-13 17:35:38	

SKR 598-25-AV-06 Stage 2		
7/29/2013		
Engineering Notes		
Engineer on Location	Megan Sprot	
ISDP	1136	psi
Initial Pressure(Breakdown)	1635	psi
Max Pressure	5575	psi
Average Pressure	5075	psi
Max Rate	62.63	bpm
Average Rate	62.2	bpm
Proppant Design Volume	123,225	lbs
Proppant in Formation	128,980	lbs
FR-66 Used	39	gals
BE-7 Used	158	gals
SandWedge WF	136	lbs
SCW 4212 Used	29	lbs

Clean Volume	4805	bbls
Start Time	4:16 PM	HH:MM
End Time	5:34 PM	HH:MM
Job Notes:		
Pumped to completion		



**3.2 Job Event Log**

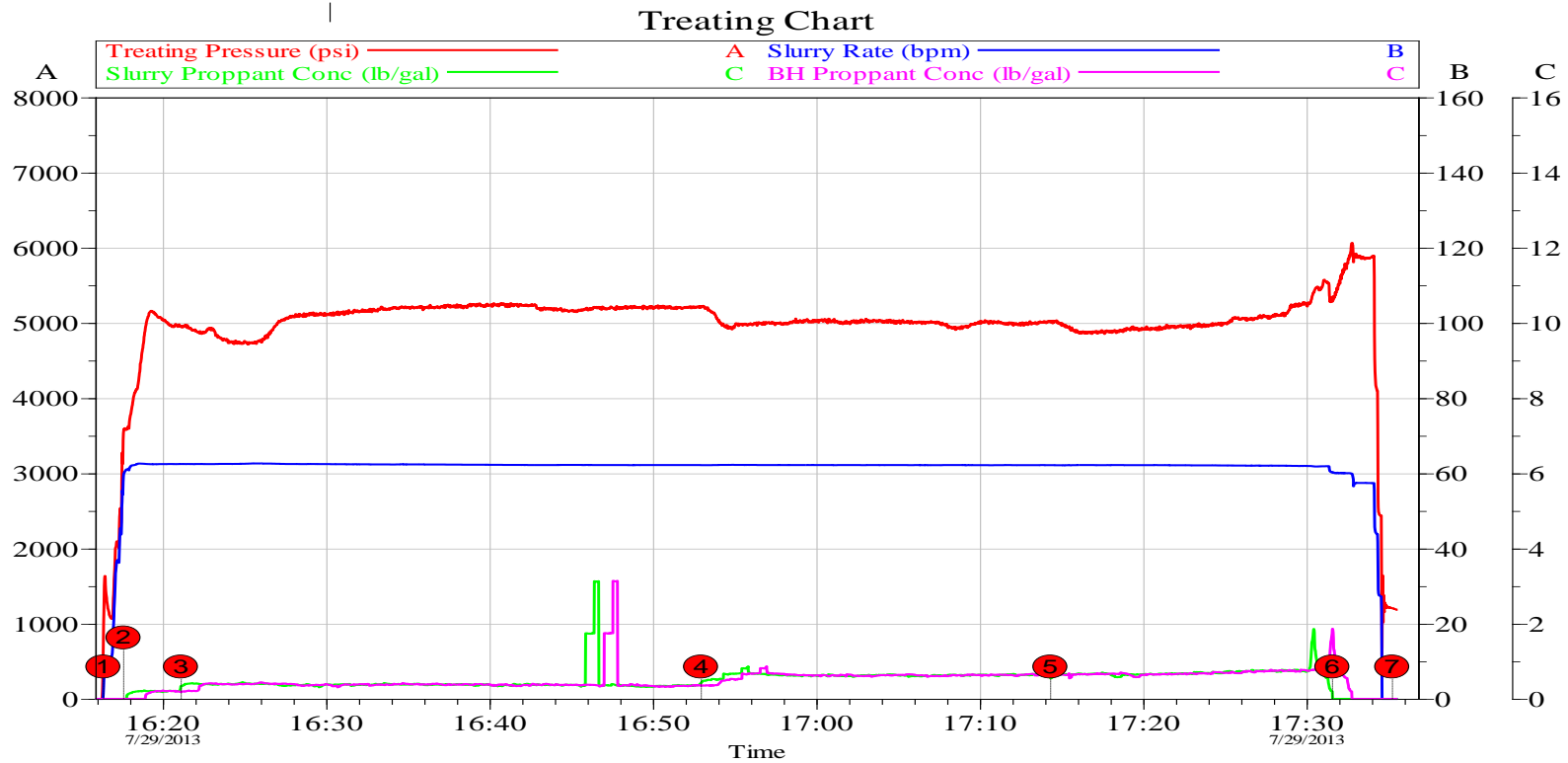
Time	Comment	Treating Pressure psi	Braden Pressure psi	Slurry Rate bpm	Treatment Clean Volume gal	Treatment Slurry Volume gal
29-Jul-13 16:08:09	Starting Job					
16:16:22	Pad	989	15	3.0	0	2
16:16:27	Break Formation	1635	15	8.4	0	26
16:17:36	Proppant Laden Fluid	3574	14	59.2	1145	1298
16:21:07	Proppant Laden Fluid	4945	16	62.5	10463	10491
16:46:11	False prop conc spike	5198	18	62.2	76397	76169
16:52:57	Proppant Laden Fluid	5212	18	62.2	94187	93839
17:14:20	Proppant Laden Fluid	5022	17	62.2	149948	149693
17:30:20	False prop conc spike, spun up screws to clean out hopper	5356	19	61.9	191286	191455
17:31:35	Flush	5350	20	60.2	194478	194696
17:34:38	ISDP	1136	20	0.0	201785	201698

Time	Comment	Treating Pressure psi	Braden Pressure psi	Slurry Rate bpm	Treatment Clean Volume gal	Treatment Slurry Volume gal
17:35:15	Shut-In	1205	19	0.0	201821	201698
17:35:40	Ending Job	1183	19	0.0	201821	201698



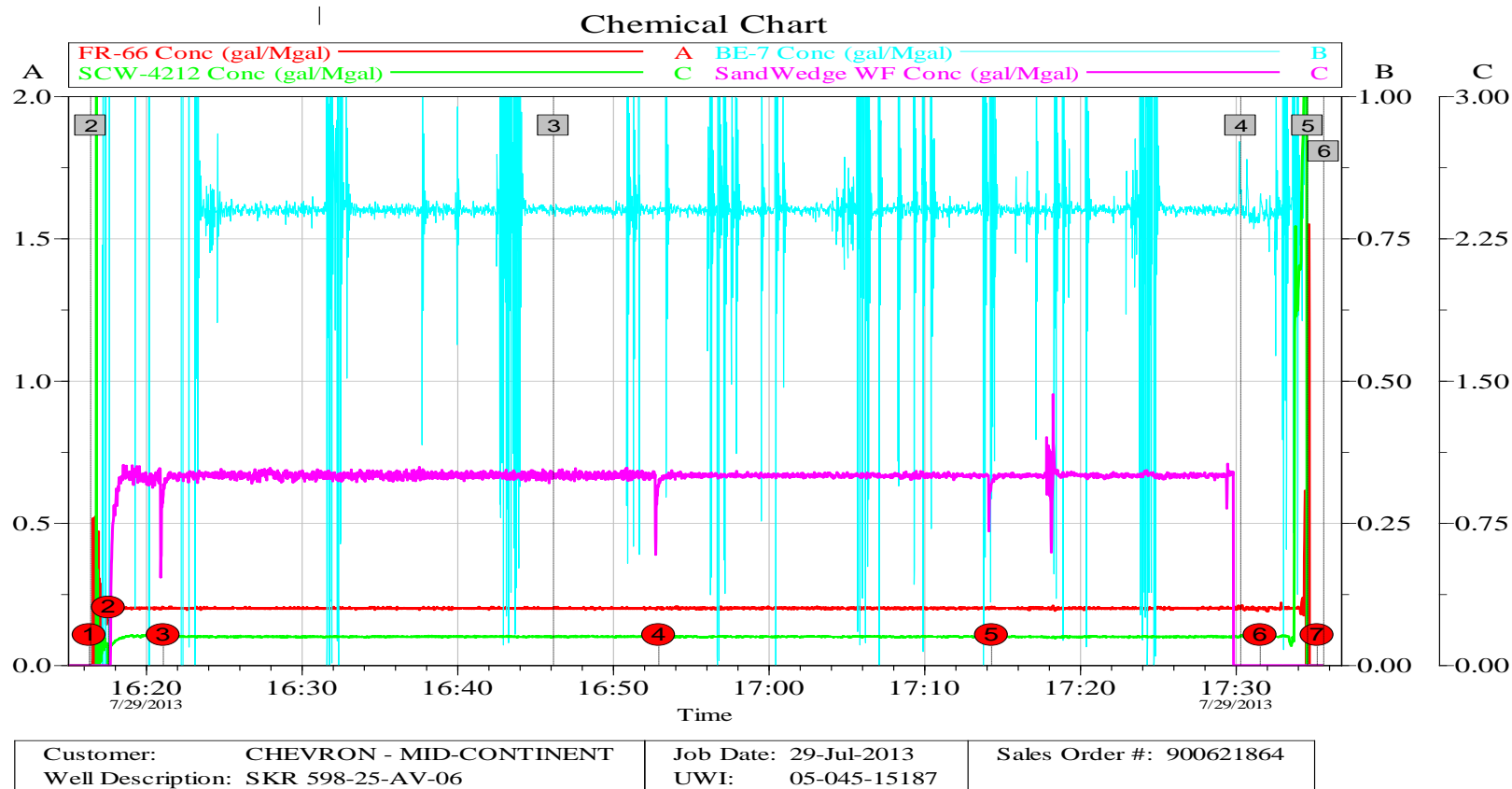
## 4.0 ATTACHMENTS

### 4.1 Treating Chart

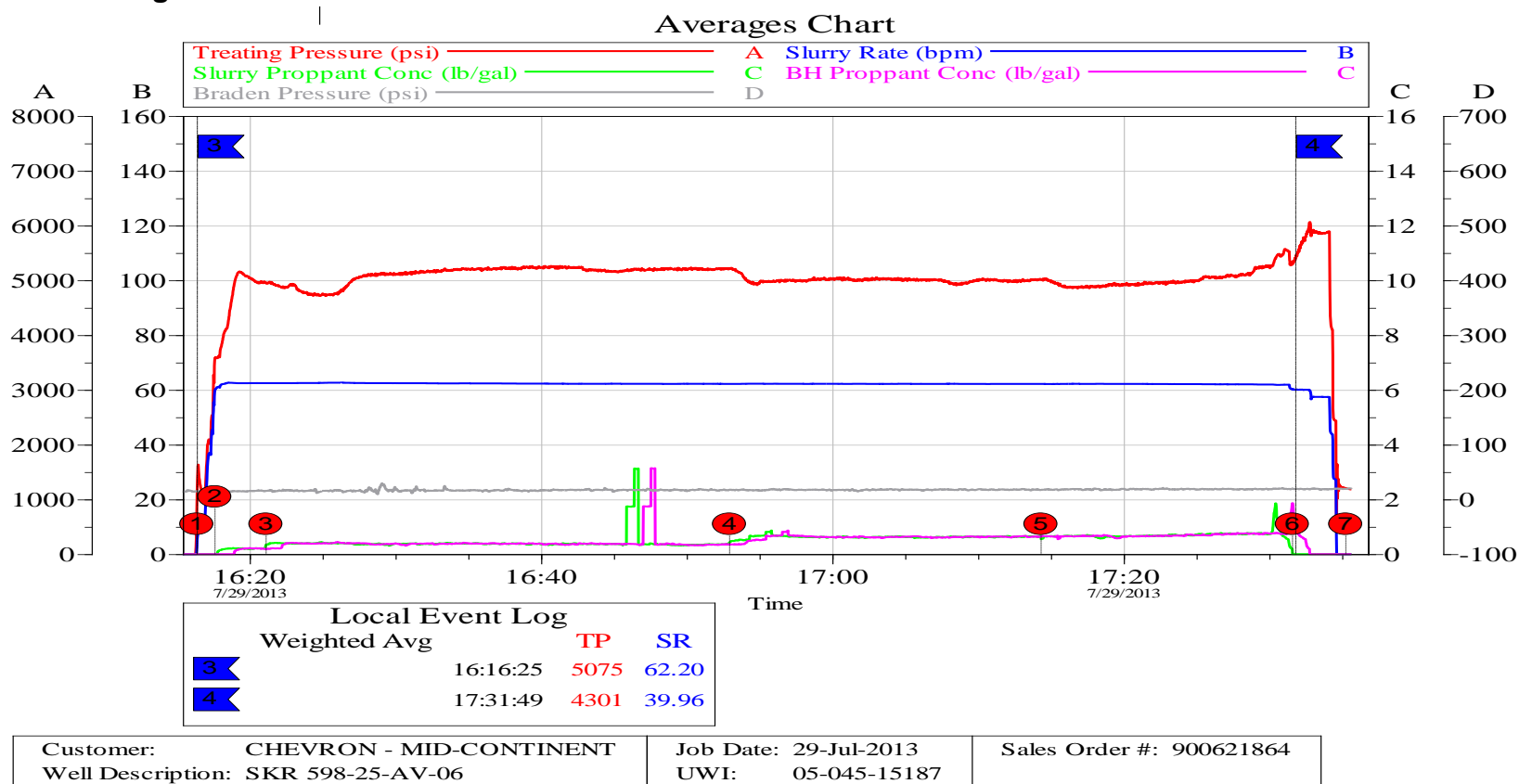


Customer: CHEVRON - MID-CONTINENT	Job Date: 29-Jul-2013	Sales Order #: 900621864
Well Description: SKR 598-25-AV-06	UWI: 05-045-15187	

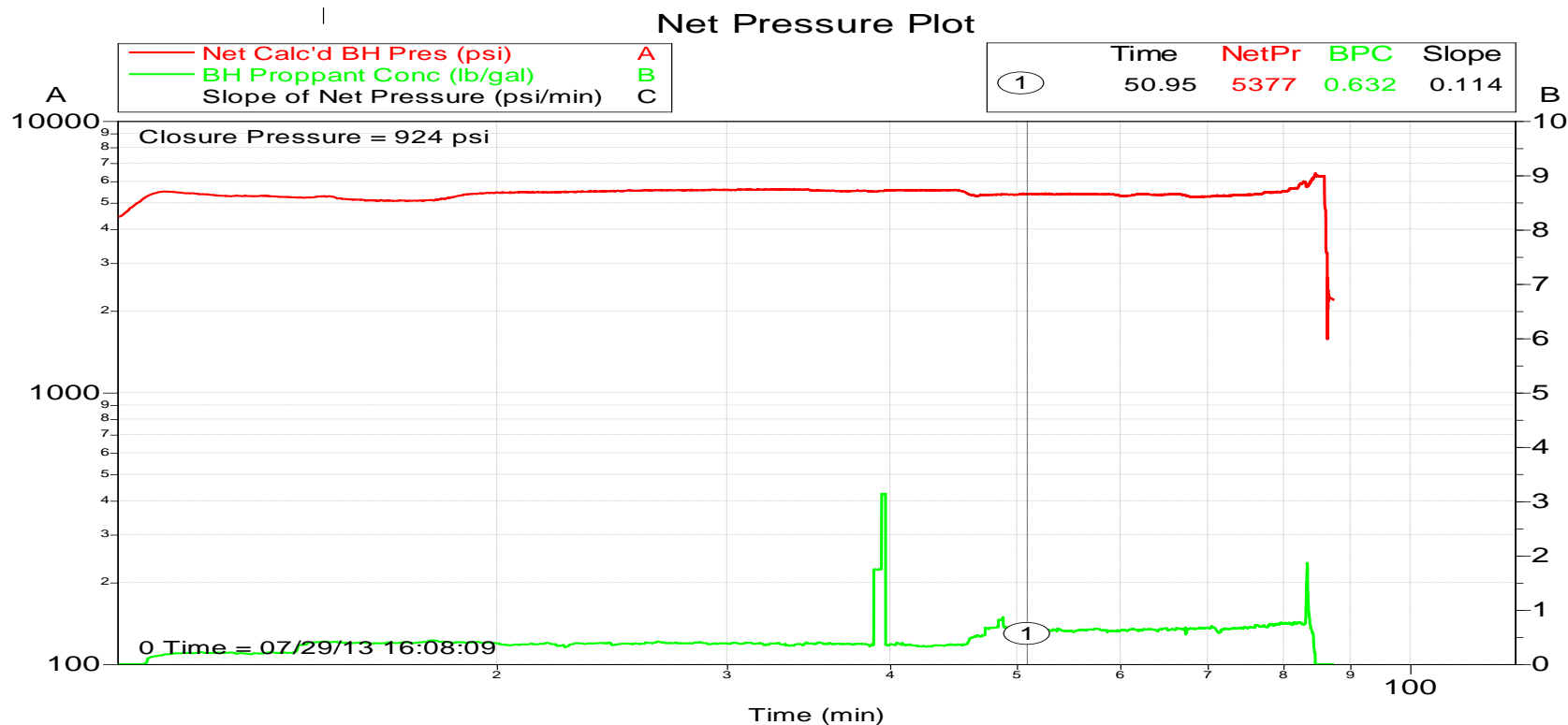
## 4.2 Chemical Chart



## 4.3 Averages Chart



## 4.4 Net Pressure Plot



Customer: CHEVRON - MID-CONTINENT  
Well Description: SKR 598-25-AV-06

Job Date: 29-Jul-2013  
UWI: 05-045-15187

Sales Order #: 900621864