

**CHEVRON - MID-CONTINENT**  
**760 Horizon Dr**  
**Grand Junction, CO 81506**

**SKR 598-25-AV-11**

**Interval 2**  
**Garfield County, Colorado**

**Sales Order: 900621864**

## **Post Job Report**

**For: Kieth Hejl**  
**Date: Monday, July 29, 2013**

Notice: Although the information contained in this report is based on sound engineering practices, the copyright owner(s) does (do) not accept any responsibility whatsoever, in negligence or otherwise, for any loss or damage arising from the possession or use of the report whether in terms of correctness or otherwise. The application, therefore, by the user of this report or any part thereof, is solely at the user's own risk.

**HALLIBURTON**

Table of Contents

1.0 Well Information ..... 3

    1.1 Customer Information ..... 3

    1.2 Pipe Information ..... 4

    1.3 Perforation Intervals ..... 4

2.0 Actual Stage Summary ..... 5

    2.1 Stage Summary ..... 5

3.0 Performance Highlights..... 7

    3.1 Treatment Summary ..... 7

    3.2 Job Event Log ..... 9

4.0 Attachments..... 11

    4.1 Treating Chart ..... 11

    4.2 Chemical Chart ..... 12

    4.3 Averages Chart ..... 13

    4.4 Net Pressure Plot ..... 14

## 1.0 WELL INFORMATION

### 1.1 Customer Information

#### Customer

CHEVRON - MID-CONTINENT EBIZ

Sales Order

900621864

Well Name

SKR

Well Number

598-25-AV-11

Job Date

29-Jul-2013

County

Garfield

State

Colorado

UWI/API

05-045-15187

Country

United States of America

H2S Present

Unknown

Customer Representative

Kieth Hejl

Halliburton Representative

T. Nowak

**1.2 Pipe Information**

Equipment	Top MD ft	Bottom MD ft	OD in	ID in	Grade	Weight lb/ft
Surface Pipe	0.0	100.0	5.000	4.000		
Casing	0.0	4965.0	4.500	4.000	N-80	11.60

**1.3 Perforation Intervals**

Top MD ft	Bottom MD ft	Number of Shots	Perf Density spf	Perf Diameter in
4064.0	4218.0	27	0.2	0.350

## 2.0 ACTUAL STAGE SUMMARY

### 2.1 Stage Summary

Stage Number	Stage Time	Max Treat Pr psi	Max Slurry Rate bpm	Max Wellhead Rate bpm	Max Prop Conc lb/gal	Avg Treating Pressure psi	Avg Clean Rate bpm
1	29-Jul-13 13:16:41	3568	61.0	61.0	0.00	2307	30.5
2	29-Jul-13 13:20:34	3764	62.1	62.1	0.26	3578	62.5
3	29-Jul-13 13:58:03	3759	64.0	64.0	0.55	3546	62.1
4	29-Jul-13 14:22:41	3863	64.0	64.0	0.70	3735	63.0
5	29-Jul-13 14:38:41	5707	63.7	63.7	0.95	4998	60.3
6	29-Jul-13 14:42:43	5429	61.3	61.3	0.38	4982	59.5
7	29-Jul-13 14:42:53	0	0.0	0.0	0.00	0	0.0

Stage Number	Stage Time	Avg Slurry Rate bpm	Clean Volume gal	Slurry Volume gal	Prop Mass 100*lb
1	29-Jul-13 13:16:41	32.2	2261	2406	0.00
2	29-Jul-13 13:20:34	61.7	10192	10075	21.70
3	29-Jul-13 13:58:03	62.2	97785	97886	422.53
4	29-Jul-13 14:22:41	63.8	65182	66006	407.54
5	29-Jul-13 14:38:41	61.8	40508	41541	351.86
6	29-Jul-13 14:42:43	57.3	7161	6817	0.00
7	29-Jul-13 14:42:53	0.0	0	0	0.00
Total			223089	224731	1203.63

### 3.0 PERFORMANCE HIGHLIGHTS

#### 3.1 Treatment Summary

Start Time	29-Jul-13 13:07:13	
End Time	29-Jul-13 14:42:53	

SKR 598-25-AV-11 Stage 2		
7/29/2013		
Engineering Notes		
Engineer on Location	Megan Sprot	
ISDP	1516	psi
Initial Pressure(Breakdown)	1879	psi
Max Pressure	5707	psi
Average Pressure	3887	psi
Max Rate	63.97	bpm
Average Rate	62.8	bpm
Proppant Design Volume	135,150	lbs
Proppant in Formation	141,100	lbs
FR-66 Used	45	gals
BE-7 Used	169	gals
SandWedge WF Used	148	lbs
SCW-4212 Used	32	lbs

Clean Volume	5312	bbls
Start Time	1:14 PM	HH:MM
End Time	2:43 PM	HH:MM
Job Notes:		
Pumped an extra 60sks per customer request to spread out sand cut from previous job. Pumped to completion.		



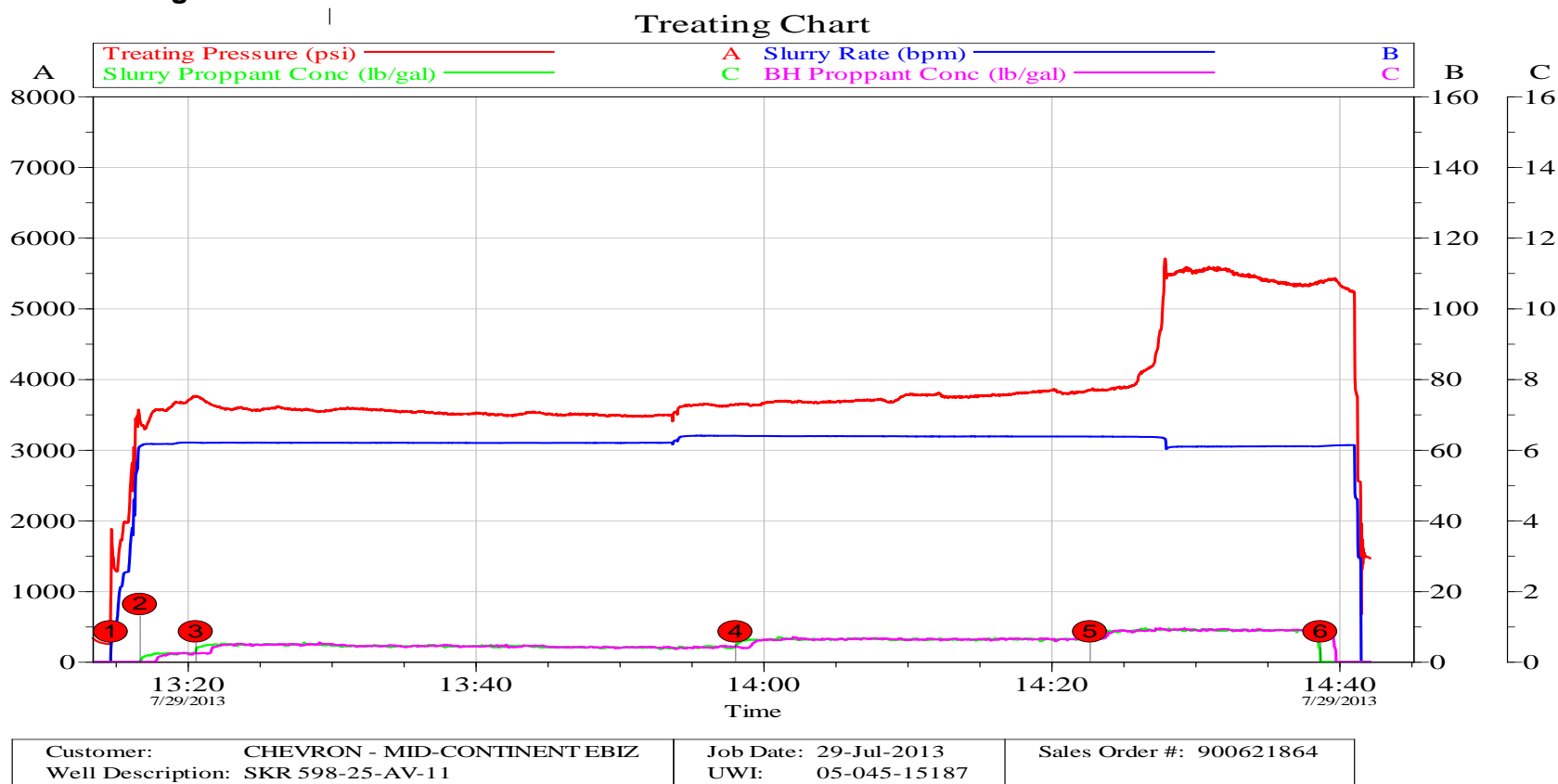
**3.2 Job Event Log**

Time	Comment	Treating Pressure psi	N2 Pressure psi	Slurry Rate bpm	Treatment Clean Volume gal	Treatment Slurry Volume gal
29-Jul-13 13:07:13	Starting Job					
13:14:41	Pad	1004	-87	4.2	0	3
13:14:43	Break Formation=1879 psi, 5.91 bpm	1879	-84	5.9	0	11
13:16:42	Proppant Laden Fluid	3393	-115	61.0	2261	2406
13:20:35	Proppant Laden Fluid	3747	-131	62.0	12453	12482
13:58:04	Proppant Laden Fluid	3642	-132	64.0	110238	110368
14:22:42	Proppant Laden Fluid	3853	-132	63.7	175420	176373
14:38:42	Flush	5382	-143	61.0	215928	217914
14:41:32	ISDP	1516	-147	0.1	223018	224731
14:42:44	Shut-In	-17	-4120	0.0	223089	224731
14:42:55	Ending Job	-18	-4150	0.0	223089	224731

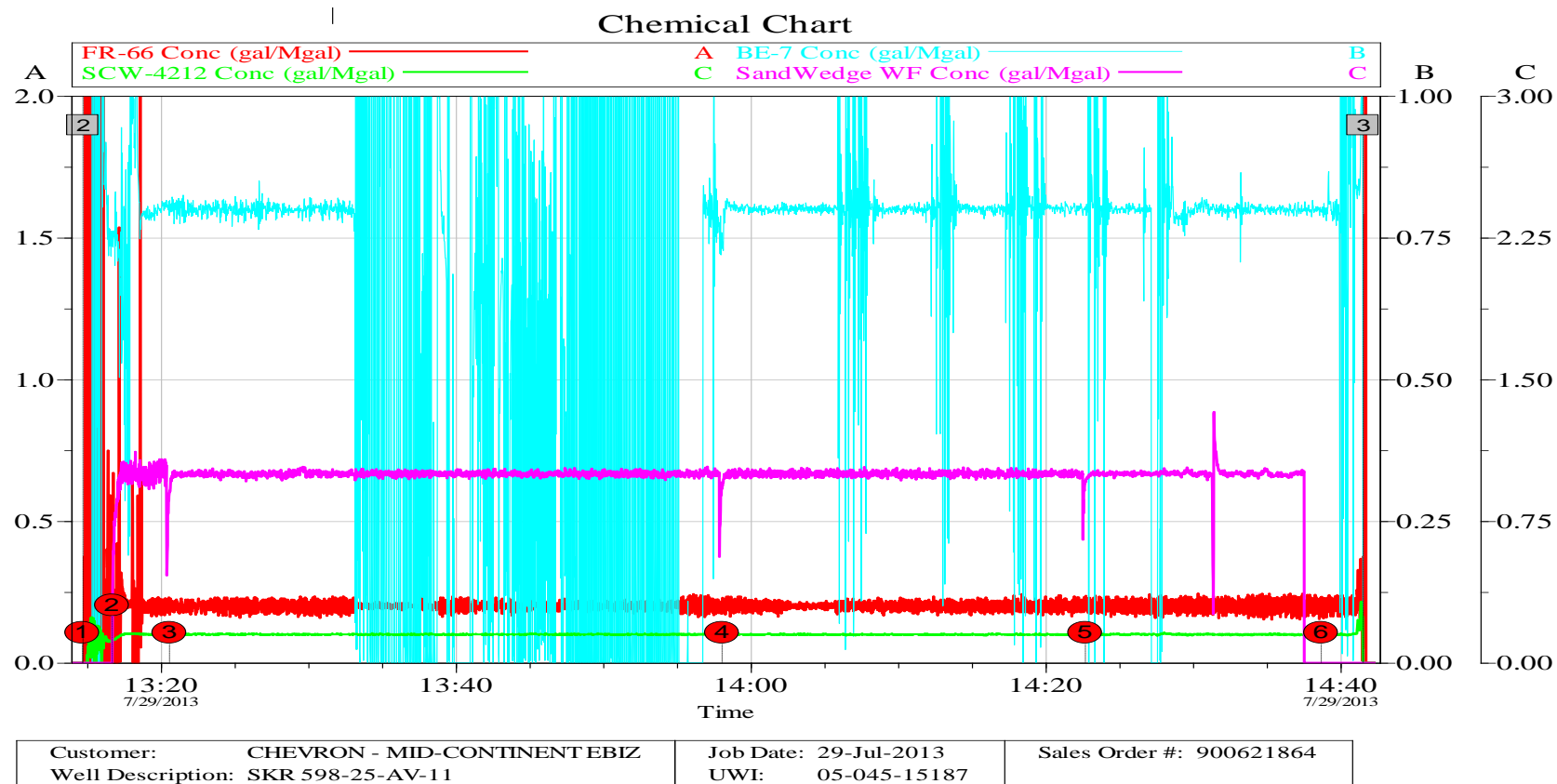


## 4.0 ATTACHMENTS

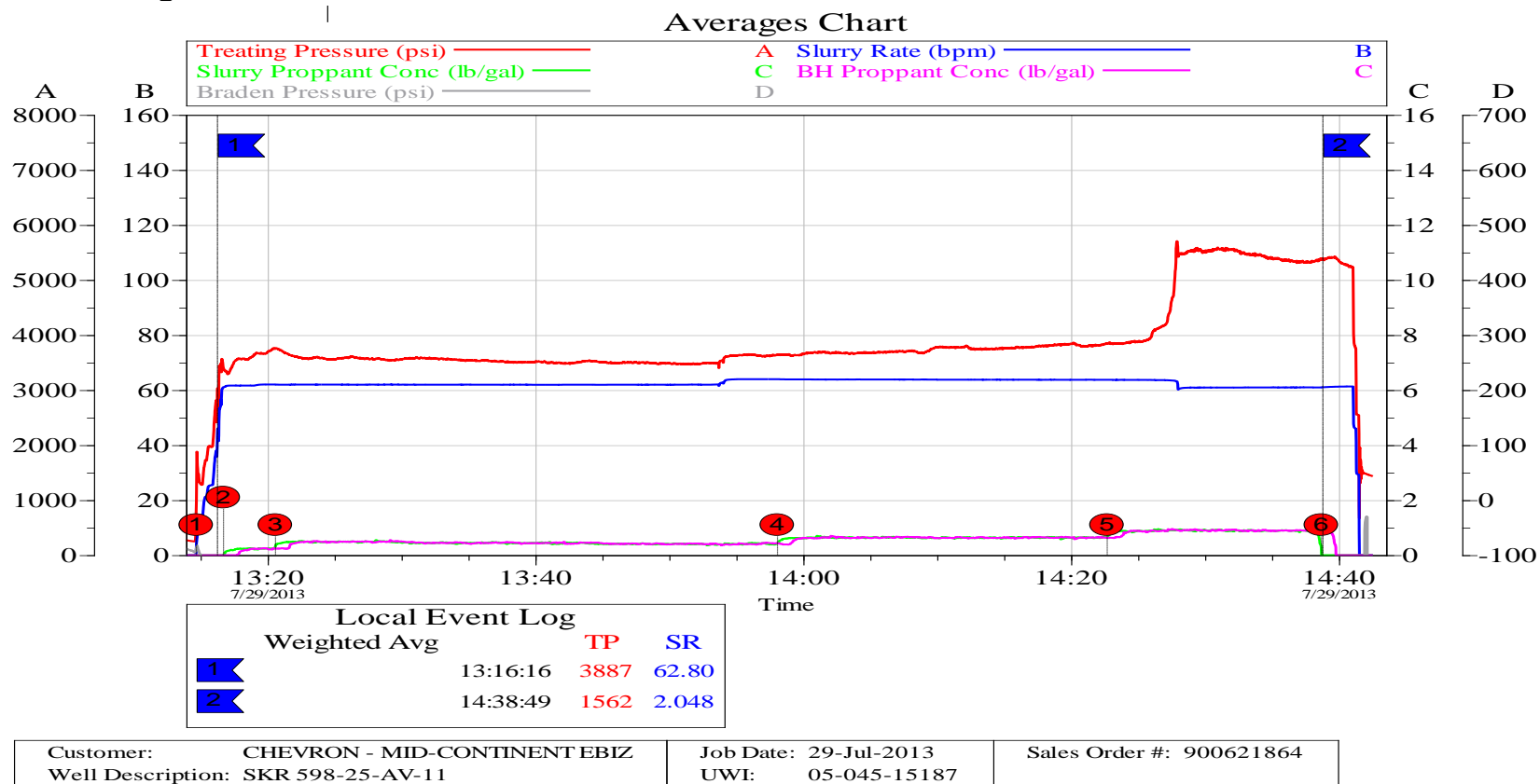
### 4.1 Treating Chart



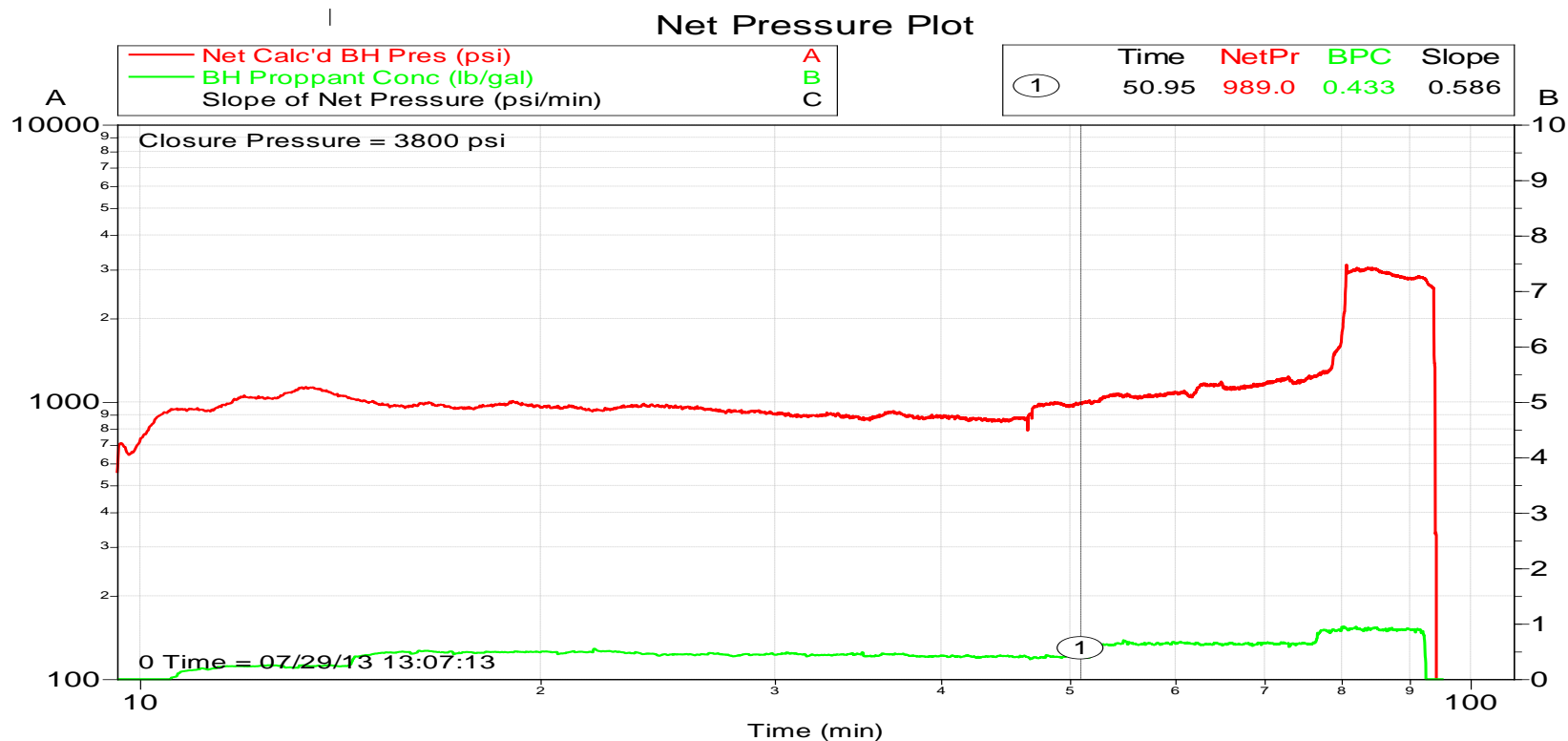
## 4.2 Chemical Chart



## 4.3 Averages Chart



## 4.4 Net Pressure Plot



Customer: CHEVRON - MID-CONTINENT EBIZ  
Well Description: SKR 598-25-AV-11

Job Date: 29-Jul-2013  
UWI: 05-045-15187

Sales Order #: 900621864