

**CHEVRON - MID-CONTINENT**  
**760 Horizon Dr**  
**Grand Junction, CO 81506**

**SKR 598-25-AV-11**

**Stage 1**  
**Garfield County, Colorado**

**Sales Order: 900621864**

## **Post Job Report**

**For: Kieth Hejl**  
**Date: Sunday, July 28, 2013**

Notice: Although the information contained in this report is based on sound engineering practices, the copyright owner(s) does (do) not accept any responsibility whatsoever, in negligence or otherwise, for any loss or damage arising from the possession or use of the report whether in terms of correctness or otherwise. The application, therefore, by the user of this report or any part thereof, is solely at the user's own risk.

**HALLIBURTON**

Table of Contents

1.0 Well Information ..... 3

1.1 Customer Information ..... 3

1.2 Pipe Information ..... 4

1.3 Perforation Intervals ..... 4

2.0 Actual Stage Summary ..... 5

2.1 Stage Summary ..... 5

3.0 Performance Highlights..... 6

3.1 Treatment Summary ..... 6

3.2 Job Event Log ..... 7

4.0 Attachments..... 8

4.1 Treating Chart ..... 8

4.2 Chemical Chart ..... 9

4.3 Averages Chart ..... 10

4.4 Net Pressure Plot ..... 11

## 1.0 WELL INFORMATION

### 1.1 Customer Information

Customer	CHEVRON - MID-CONTINENT EBIZ
Sales Order	900621864
Well Name	SKR
Well Number	598-25-AV-11
Job Date	28-Jul-2013
County	Garfield
State	Colorado
UWI/API	05-045-15187
Country	United States of America
H2S Present	Unknown
Customer Representative	Kieth Hejl
Halliburton Representative	T. Nowak

## 1.2 Pipe Information

Equipment	Top MD ft	Bottom MD ft	OD in	ID in	Grade	Weight lb/ft
Surface Pipe	0.0	100.0	5.000	4.000		
Casing	0.0	4965.0	4.500	4.000	N-80	11.60

## 1.3 Perforation Intervals

Top MD ft	Bottom MD ft	Number of Shots	Perf Density spf	Perf Diameter in
4313.0	4530.0	27	0.1	0.350

## 2.0 ACTUAL STAGE SUMMARY

### 2.1 Stage Summary

Stage Number	Stage Time	Max Treat Pr psi	Max Slurry Rate bpm	Max Wellhead Rate bpm	Max Prop Conc lb/gal	Avg Treating Pressure psi	Avg Clean Rate bpm
1	28-Jul-13 12:41:16	4537	62.5	62.5	0.37	2690	36.3
2	28-Jul-13 12:45:20	4842	63.9	63.9	0.23	4700	64.5
3	28-Jul-13 13:22:06	4541	64.0	64.0	0.45	4135	63.8
4	28-Jul-13 13:46:54	4221	64.0	64.0	0.74	4169	63.1
5	28-Jul-13 14:03:31	4511	64.0	64.0	1.60	4313	62.3
6	28-Jul-13 14:07:21	4408	64.2	64.2	0.24	4167	64.0
7	28-Jul-13 14:11:02	0	0.0	0.0	0.00	0	0.0

Stage Number	Stage Time	Avg Slurry Rate bpm	Clean Volume gal	Slurry Volume gal	Prop Mass 100*lb
1	28-Jul-13 12:41:16	36.9	4372	4492	0.73
2	28-Jul-13 12:45:20	63.7	10980	10846	10.87
3	28-Jul-13 13:22:06	64.0	98584	98772	372.86
4	28-Jul-13 13:46:54	63.9	65687	66603	407.46
5	28-Jul-13 14:03:31	63.9	43466	44586	375.42
6	28-Jul-13 14:07:21	61.8	7632	7301	0.00
7	28-Jul-13 14:11:02	0.0	0	0	0.00
Total			230722	232600	1167.34

### 3.0 PERFORMANCE HIGHLIGHTS

#### 3.1 Treatment Summary

Start Time	28-Jul-13 12:21:22	
End Time	28-Jul-13 14:11:02	

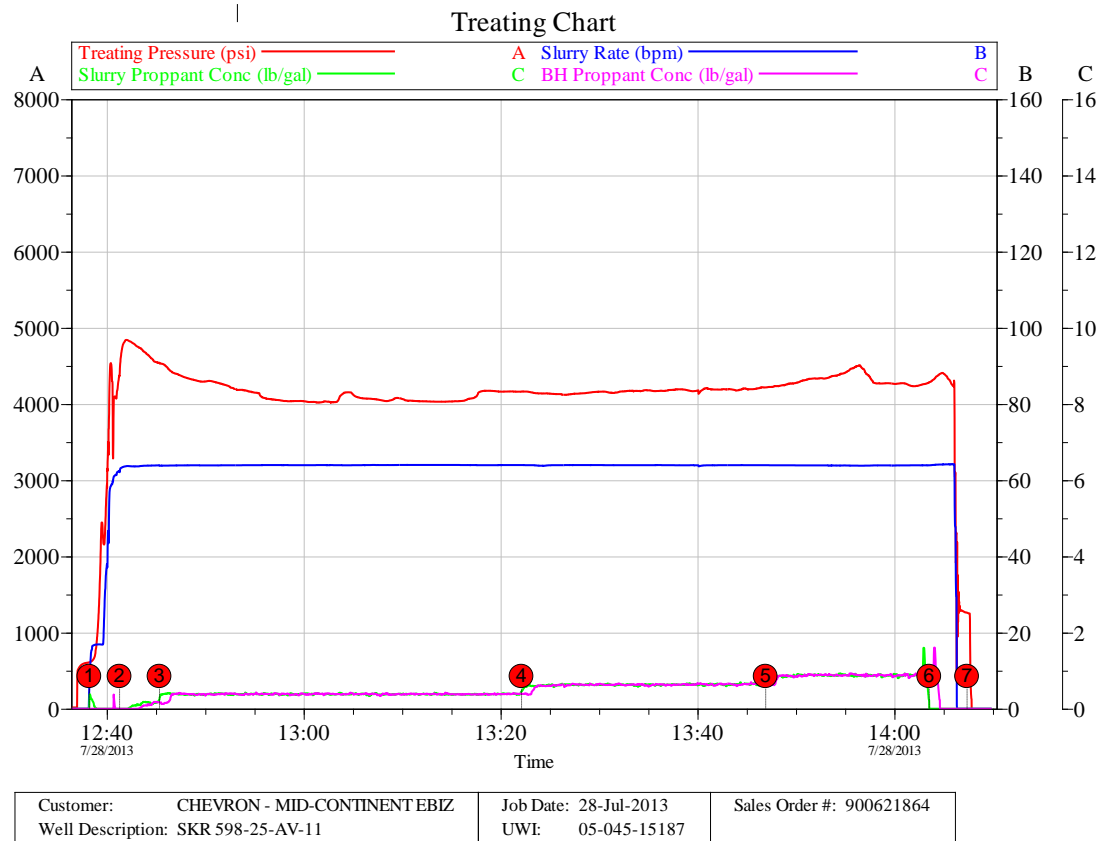
SKR 598-25-AV-11 Stage 1		
7/28/2013		
Engineering Notes		
Engineer on Location	Megan Sprot	
ISDP	1433	psi
Initial Pressure(Breakdown)	2446	psi
Max Pressure	4842	psi
Average Pressure	4153	psi
Max Rate	64.02	bpm
Average Rate	63.2	bpm
Proppant Design Volume	145,088	lbs
Proppant in Formation	143,000	lbs
FR-66 Used	32	gals
BE-7 Used	173	gals
SandWedge WF Used	163	lbs
SCW-4212 Used	28	lbs
Clean Volume	5493	bbls
Start Time	12:37 PM	HH:MM
End Time	2:06 PM	HH:MM
Job Notes:		
Pumped to completion		

## 3.2 Job Event Log

Time	Comment	Treating Pressure psi	N2 Pressure psi	Slurry Rate bpm	Treatment Clean Volume gal	Treatment Slurry Volume gal
28-Jul-13 12:21:22	Starting Job					
12:38:13	Pad	610	298	6.2	0	4
12:39:29	Break Formation=2446 psi at 16.9 bpm	2446	296	16.9	811	844
12:41:17	Proppant Laden Fluid	4368	296	62.3	4372	4492
12:45:21	Proppant Laden Fluid	4541	293	63.9	15352	15338
13:22:07	Proppant Laden Fluid	4163	292	64.0	113937	114110
13:46:55	Proppant Laden Fluid	4218	293	64.0	179624	180713
14:03:32	Flush	4287	295	63.9	223090	225299
14:06:21	ISDP	1731	293	0.9	230653	232600
14:07:22	Shut-In	1262	-3735	0.0	230722	232600
14:11:05	Ending Job	-93	-80	0.0	230722	232600

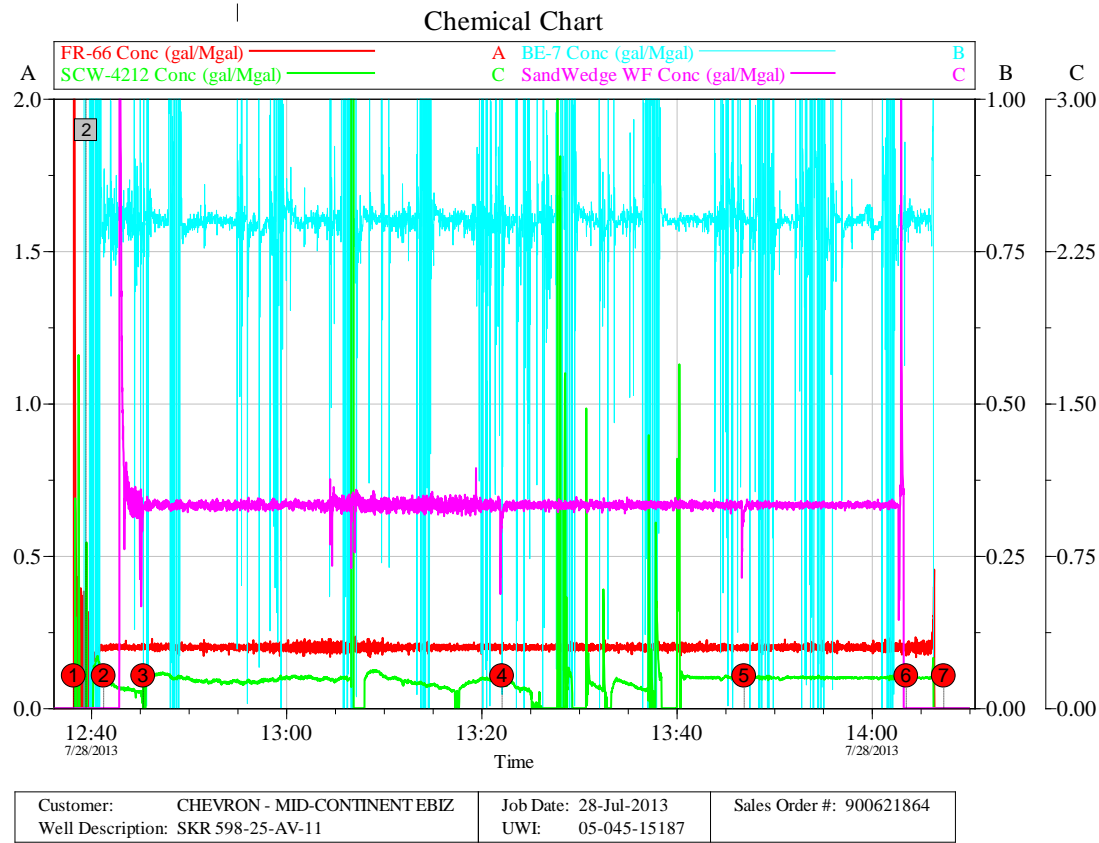
## 4.0 ATTACHMENTS

### 4.1 Treating Chart

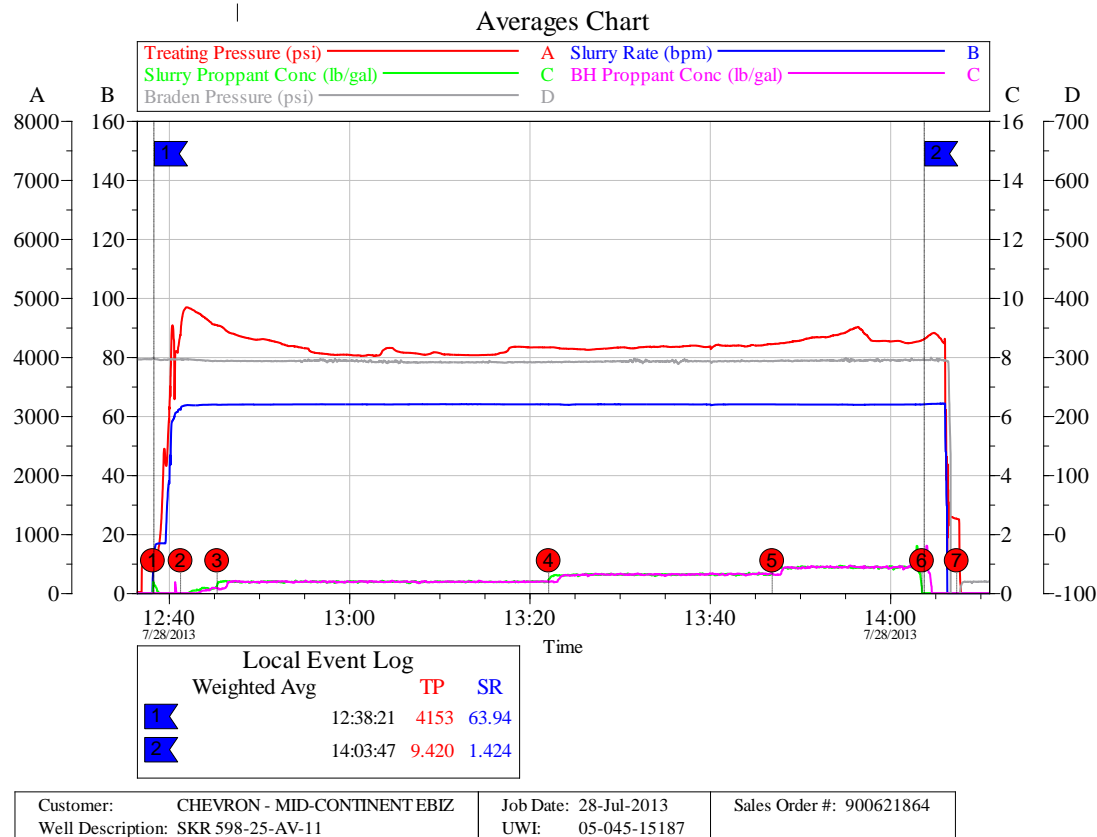




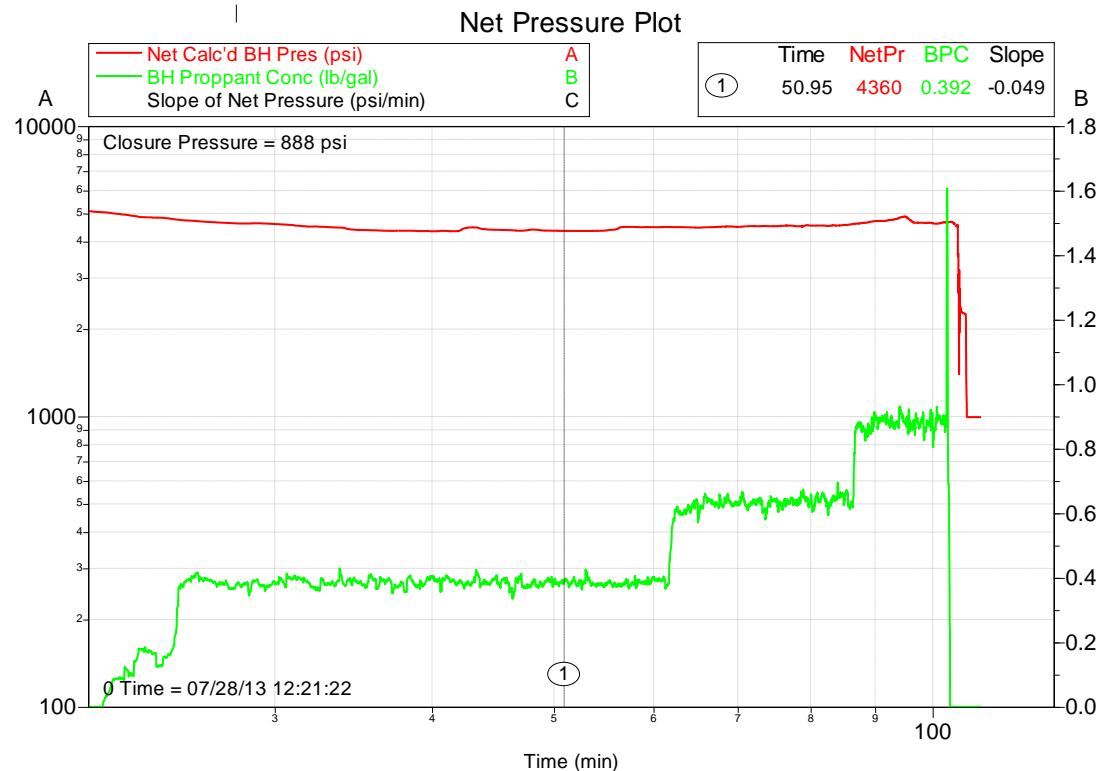
## 4.2 Chemical Chart



### 4.3 Averages Chart



## 4.4 Net Pressure Plot



Customer: CHEVRON - MID-CONTINENT EBIZ	Job Date: 28-Jul-2013	Sales Order #: 900621864
Well Description: SKR 598-25-AV-11	UWI: 05-045-15187	