

---

**WPX ENERGY ROCKY MOUNTAIN LLC-EBUS**

---

**PA 522-11  
RULISON  
Garfield County , Colorado**

**Cement Surface Casing**  
**24-May-2013**

**Post Job Report**

## The Road to Excellence Starts with Safety

|  |                                   |                         |                          |
|--|-----------------------------------|-------------------------|--------------------------|
| Sold To #: 300721                            | Ship To #: 2999973                | Quote #:                | Sales Order #: 900461039 |
| Customer: WPX ENERGY ROCKY MOUNTAIN LLC-EBUS | Customer Rep: Wilson, W.C         |                         |                          |
| Well Name: PA                                | Well #: 522-11                    | API/UWI #:              |                          |
| Field: RULISON                               | City (SAP): PARACHUTE             | County/Parish: Garfield | State: Colorado          |
| Contractor: Cyclone Drilling                 | Rig/Platform Name/Num: Cyclone 17 |                         |                          |
| Job Purpose: Cement Surface Casing           |                                   |                         |                          |
| Well Type: Development Well                  | Job Type: Cement Surface Casing   |                         |                          |
| Sales Person: MAYO, MARK                     | Srv Supervisor: KEANE, JOHN       | MBU ID Emp #: 486519    |                          |

## Job Personnel

| HES Emp Name        | Exp Hrs | Emp #  | HES Emp Name             | Exp Hrs | Emp #  | HES Emp Name           | Exp Hrs | Emp #  |
|---------------------|---------|--------|--------------------------|---------|--------|------------------------|---------|--------|
| BANKS, BRENT A      | 8       | 371353 | BLANCHETTE, JAMES George | 8       | 371360 | CAMPBELL, DAVID Arthur | 8       | 544403 |
| KEANE, JOHN Donovan | 8       | 486519 | WILSON, BENJAMIN Wallace | 8       | 533647 |                        |         |        |

## Equipment

| HES Unit # | Distance-1 way | HES Unit # | Distance-1 way | HES Unit # | Distance-1 way | HES Unit # | Distance-1 way |
|------------|----------------|------------|----------------|------------|----------------|------------|----------------|
| 10567589C  | 60 mile        | 10867425   | 60 mile        | 10897891   | 60 mile        | 10951251   | 60 mile        |
| 11808829   | 60 mile        |            |                |            |                |            |                |

## Job Hours

| Date       | On Location Hours | Operating Hours | Date | On Location Hours | Operating Hours | Date | On Location Hours | Operating Hours |
|------------|-------------------|-----------------|------|-------------------|-----------------|------|-------------------|-----------------|
| 05/24/2013 | 8                 | 1               |      |                   |                 |      |                   |                 |

**TOTAL** Total is the sum of each column separately

## Job

| Formation Name         | Top     | Bottom            | Called Out    | Date            | Time  | Time Zone |
|------------------------|---------|-------------------|---------------|-----------------|-------|-----------|
| Formation Depth (MD)   |         |                   | On Location   | 24 - May - 2013 | 05:30 | MST       |
| Form Type              | BHST    |                   | Job Started   | 24 - May - 2013 | 11:16 | MST       |
| Job depth MD           | 928. ft | Job Depth TVD     | Job Completed | 24 - May - 2013 | 12:00 | MST       |
| Water Depth            |         | Wk Ht Above Floor | Departed Loc  | 24 - May - 2013 | 01:00 | MST       |
| Perforation Depth (MD) | From    | To                |               |                 |       |           |

## Well Data

| Description    | New / Used | Max pressure psig | Size in | ID in | Weight lbm/ft | Thread | Grade | Top MD ft | Bottom MD ft | Top TVD ft | Bottom TVD ft |
|----------------|------------|-------------------|---------|-------|---------------|--------|-------|-----------|--------------|------------|---------------|
| OPEN HOLE      |            |                   |         | 13.5  |               |        |       | .         | 928.         | .          | 928.          |
| SURFACE CASING | Unknown    |                   | 9.625   | 9.001 | 32.3          |        | H-40  | .         | 928.         | .          | 928.          |

## Tools and Accessories

| Type         | Size | Qty | Make | Depth | Type        | Size | Qty | Make | Depth | Type           | Size  | Qty | Make |
|--------------|------|-----|------|-------|-------------|------|-----|------|-------|----------------|-------|-----|------|
| Guide Shoe   |      |     |      |       | Packer      |      |     |      |       | Top Plug       | 9.625 | 1   | HES  |
| Float Shoe   |      |     |      |       | Bridge Plug |      |     |      |       | Bottom Plug    |       |     |      |
| Float Collar |      |     |      |       | Retainer    |      |     |      |       | SSR plug set   |       |     |      |
| Insert Float |      |     |      |       |             |      |     |      |       | Plug Container | 9.625 | 1   | HES  |
| Stage Tool   |      |     |      |       |             |      |     |      |       | Centralizers   |       |     |      |

## Miscellaneous Materials

| Gelling Agt   | Conc | Surfactant | Conc | Acid Type | Qty  | Conc | % |
|---------------|------|------------|------|-----------|------|------|---|
| Treatment Fld | Conc | Inhibitor  | Conc | Sand Type | Size | Qty  |   |

## Fluid Data

| Stage/Plug #: 1 | Fluid # | Stage Type | Fluid Name | Qty | Qty uom | Mixing Density lbm/gal | Yield ft3/sk | Mix Fluid Gal/sk | Rate bbl/min | Total Mix Fluid Gal/sk |
|-----------------|---------|------------|------------|-----|---------|------------------------|--------------|------------------|--------------|------------------------|
|-----------------|---------|------------|------------|-----|---------|------------------------|--------------|------------------|--------------|------------------------|

Stage/Plug #: 1

| Stage/Plug #: 1                          |                          |                               |        |                                   |                        |                           |                  |              |                        |
|--|--------------------------|-------------------------------|--------|-----------------------------------|------------------------|---------------------------|------------------|--------------|------------------------|
| Fluid #                                  | Stage Type               | Fluid Name                    | Qty    | Qty uom                           | Mixing Density lbm/gal | Yield ft <sup>3</sup> /sk | Mix Fluid Gal/sk | Rate bbl/min | Total Mix Fluid Gal/sk |
| 1  | Fresh Water Spacer       |                               | 20.00  | bbl                               | .                      | .0                        | .0               | 8            |                        |
| 2  | VersaCem Tail Cement     | VERSACEM (TM) SYSTEM (452010) | 240.0  | sacks                             | 12.8                   | 2.11                      | 11.75            | 8            | 11.75                  |
| 11.75 Gal                                |                          | FRESH WATER                   |        |                                   |                        |                           |                  |              |                        |
| 3  | Fresh Water Displacement |                               | 70.00  | bbl                               | .                      | .0                        | .0               | 10           |                        |
| Calculated Values                        |                          | Pressures                     |        | Volumes                           |                        |                           |                  |              |                        |
| Displacement                             | 70                       | Shut In: Instant              |        | Lost Returns                      |                        | Cement Slurry             | 90               | Pad          |                        |
| Top Of Cement                            | SURFACE                  | 5 Min                         |        | Cement Returns                    | 18                     | Actual Displacement       | 70               | Treatment    |                        |
| Frac Gradient                            |                          | 15 Min                        |        | Spacers                           | 20                     | Load and Breakdown        |                  | Total Job    | 180                    |
| Rates                                    |                          |                               |        |                                   |                        |                           |                  |              |                        |
| Circulating                              | 10                       | Mixing                        | 8      | Displacement                      | 70                     | Avg. Job                  |                  |              | 8                      |
| Cement Left In Pipe                      | Amount                   | 38.5 ft                       | Reason | Shoe Joint                        |                        |                           |                  |              |                        |
| Frac Ring # 1 @                          | ID                       | Frac ring # 2 @               | ID     | Frac Ring # 3 @                   | ID                     | Frac Ring # 4 @           | ID               |              |                        |
| The Information Stated Herein Is Correct |                          |                               |        | Customer Representative Signature |                        |                           |                  |              |                        |

*The Road to Excellence Starts with Safety*

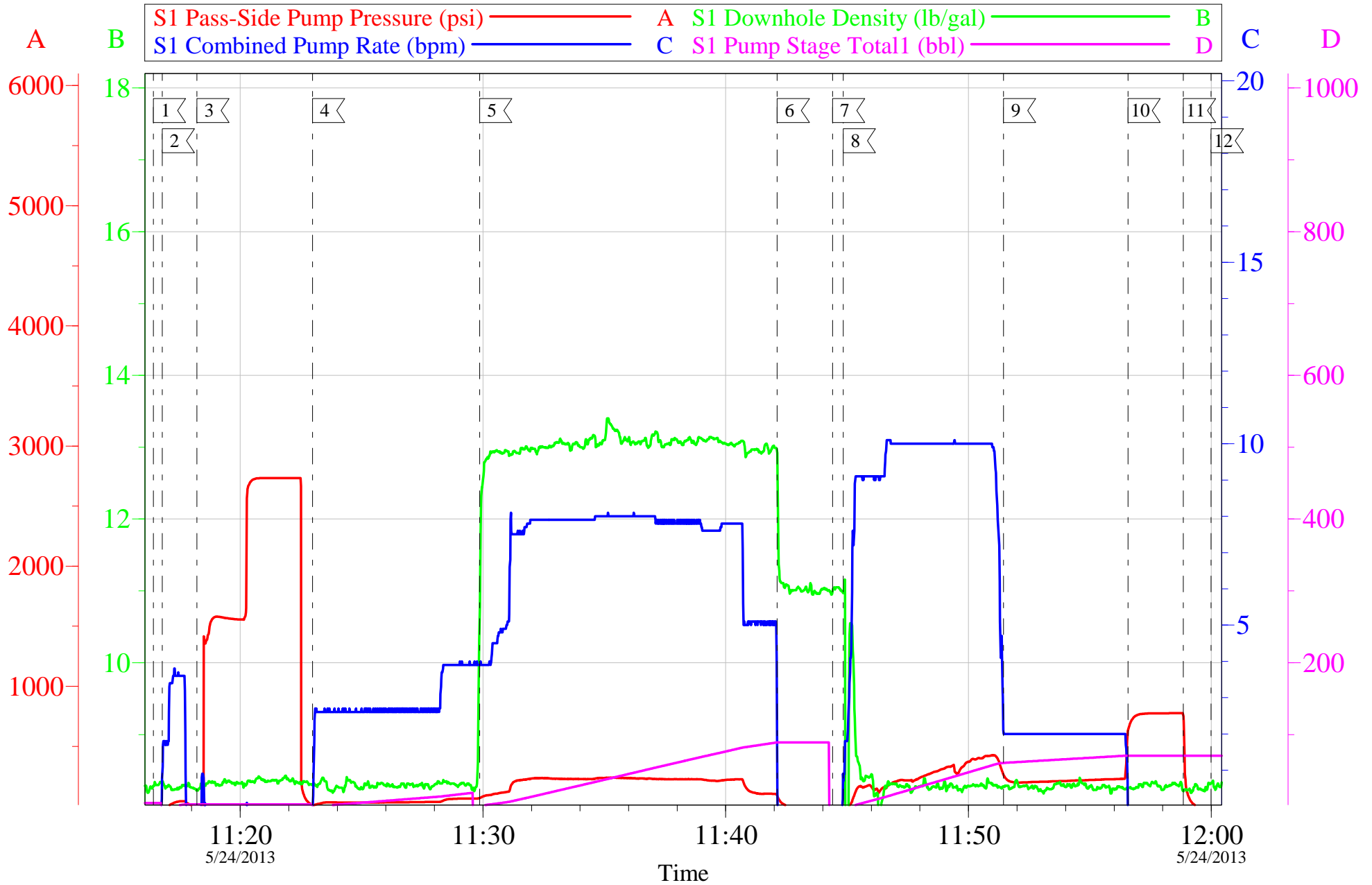
|   |  |                              |  |                                  |  |                                 |  |
|---|--|------------------------------|--|----------------------------------|--|---------------------------------|--|
| <b>Sold To #:</b> 300721                            |  | <b>Ship To #:</b> 2999973    |  | <b>Quote #:</b>                  |  | <b>Sales Order #:</b> 900461039 |  |
| <b>Customer:</b> WPX ENERGY ROCKY MOUNTAIN LLC-EBUS |  |                              |  | <b>Customer Rep:</b> Wilson, W.C |  |                                 |  |
| <b>Well Name:</b> PA                                |  |                              | <b>Well #:</b> 522-11                    |                                  |  | <b>API/UWI #:</b>               |  |
| <b>Field:</b> RULISON                               |  | <b>City (SAP):</b> PARACHUTE |  | <b>County/Parish:</b> Garfield   |  | <b>State:</b> Colorado          |  |
| <b>Legal Description:</b>                           |  |                              |  |                                  |  |                                 |  |
| <b>Lat:</b>   |  |                              |  | <b>Long:</b>                     |  |                                 |  |
| <b>Contractor:</b> Cylcone Drilling                 |  |                              | <b>Rig/Platform Name/Num:</b> Cyclone 17 |                                  |  |                                 |  |
| <b>Job Purpose:</b> Cement Surface Casing           |  |                              |  |                                  |  | <b>Ticket Amount:</b>           |  |
| <b>Well Type:</b> Development Well                  |  |                              | <b>Job Type:</b> Cement Surface Casing   |                                  |  |                                 |  |
| <b>Sales Person:</b> MAYO, MARK                     |  |                              | <b>Srvc Supervisor:</b> KEANE, JOHN      |                                  |  | <b>MBU ID Emp #:</b> 486519     |  |

| Activity Description                  | Date/Time        | Cht # | Rate bbl/min | Volume bbl |       | Pressure psig |        | Comments  |
|---------------------------------------|------------------|-------|--------------|------------|-------|---------------|--------|---|
|                                       |                  |       |              | Stage      | Total | Tubing        | Casing |   |
| Call Out                              | 05/24/2013 01:00 |       |              |            |       |               |        |   |
| Crew Leave Location                   | 05/24/2013 01:00 |       |              |            |       |               |        |   |
| Comment                               | 05/24/2013 01:01 |       |              |            |       |               |        | THANKS FOR USING HALLIBURTON, JOHN KEANE AND CREW   |
| Pre-Convoy Safety Meeting             | 05/24/2013 03:45 |       |              |            |       |               |        | WITH HES  |
| Arrive At Loc                         | 05/24/2013 05:30 |       |              |            |       |               |        | RIG PULLING DRILL PIPE UPON HES ARRIVAL   |
| Assessment Of Location Safety Meeting | 05/24/2013 05:40 |       |              |            |       |               |        | WITH HES  |
| Pre-Rig Up Safety Meeting             | 05/24/2013 10:20 |       |              |            |       |               |        | WITH HES  |
| Rig-Up Equipment                      | 05/24/2013 10:30 |       |              |            |       |               |        |   |
| Pre-Job Safety Meeting                | 05/24/2013 11:05 |       |              |            |       |               |        | WITH HES, WPX, AND CYCLONE 29   |
| Start Job                             | 05/24/2013 11:16 |       |              |            |       |               |        | TD 942 FT, TP 928 FT, SHOE 38.5 FT, HOLE 13.5 IN, MWT 9.6 LB/GAL, CSG 9.625 32.3 LB/FT H-40 |
| Pump Water                            | 05/24/2013 11:17 |       | 2            | 2          |       |               | 65.0   | FILL LINES  |
| Test Lines                            | 05/24/2013 11:18 |       |              |            |       |               |        | LOW TEST AT 1595, HIGH TEST AT 2748, PRESSURE HOLDING                                       |
| Pump Spacer                           | 05/24/2013 11:22 |       | 4            | 20         |       |               | 80.0   | FRESH WATER SPACER  |
| Pump Tail Cement                      | 05/24/2013 11:29 |       | 8            | 90.2       |       |               | 260.0  | MIXED AT 12.8 LB/GAL, 2.11 FT3/SK, 11.75 GAL/SK, 240 SKS                                    |

| Activity Description                   | Date/Time        | Cht # | Rate bbl/min | Volume bbl |       | Pressure psig |        | Comments  |
|--|------------------|-------|--------------|------------|-------|---------------|--------|---|
|  |                  |       |              | Stage      | Total | Tubing        | Casing |   |
| Shutdown                               | 05/24/2013 11:42 |       |              |            |       |               | 240.0  |   |
| Drop Plug                              | 05/24/2013 11:44 |       |              |            |       |               |        | PLUG LAUNCHED   |
| Pump Displacement                      | 05/24/2013 11:45 |       | 10           | 60         |       |               | 295.0  | FRESH WATER   |
| Slow Rate                              | 05/24/2013 11:51 |       | 2            | 10         |       |               | 260.0  | SLOWED RATE AT 60 BBL AWAY                                      |
| Bump Plug                              | 05/24/2013 11:56 |       |              |            | 70    |               | 260.0  | PLUG BUMPED AT CALCULATED DISPLACEMENT                          |
| Check Floats                           | 05/24/2013 11:58 |       |              |            |       |               | 791.0  | FLOATS HOLDING  |
| End Job                                | 05/24/2013 12:00 |       |              |            |       |               |        | PIPE WAS STATIC THROUGHOUT JOB, GOOD CIRCULATION THROUGHOUT JOB |
| Post-Job Safety Meeting (Pre Rig-Down) | 05/24/2013 12:10 |       |              |            |       |               |        | WITH HES  |
| Rig-Down Equipment                     | 05/24/2013 12:15 |       |              |            |       |               |        |   |
| Pre-Convoy Safety Meeting              | 05/24/2013 12:45 |       |              |            |       |               |        | WITH HES  |

# WPX - PA-522-21

9.625 IN SURFACE



|                             |                               |                          |
|-----------------------------|-------------------------------|--------------------------|
| Customer: WPX               | Job Date: 24-May-2013         | Sales Order #: 900461039 |
| Well Description: PA-521-22 | Job Type: SURFACE             | ADC Used: YES            |
| Company Rep: AL DUNIHOO     | Cement Supervisor: JOHN KEANE | Elite #3: BRENT BANKS    |

OptiCem v6.4.10  
24-May-13 12:19

# HALLIBURTON

## Water Analysis Report

Company: WPX

Submitted by: JOHN KEANE

Attention: CHUCK ROSS

Lease PA

Well # 522-11

Date: 5/24/2013

Date Rec.: 5/24/2013

S.O.# 900435504

Job Type: SURFACE

Specific Gravity

*MAX*

**1**

pH

*8*

**8**

Potassium (K)

*5000*

**0** Mg / L

Calcium (Ca)

*500*

**200** Mg / L

Iron (FE2)

*300*

**0** Mg / L

Chlorides (Cl)

*3000*

**120** Mg / L

Sulfates (SO<sub>4</sub>)

*1500*

**<200** Mg / L

Chlorine (Cl<sub>2</sub>)

**0** Mg / L

Temp

*40-80*

**68** Deg

Total Dissolved Solids

**330** Mg / L

Respectfully: JOHN KEANE

Title: CEMENTING SUPERVISOR

Location: Grand Junction, CO

NOTICE:

This report is limited to the described sample tested. Any person using or relying on this report agrees that Halliburton shall not be liable for any loss or damage whether due to act or omission resulting from such report or its use.

|  |  |  |
|--|--|--|
| <b>Sales Order #:</b><br>900461039                     | <b>Line Item:</b><br>10                          | <b>Survey Conducted Date:</b><br>5/24/2013                       |
| <b>Customer:</b><br>WPX ENERGY ROCKY MOUNTAIN LLC-EBUS |  | <b>Job Type (BOM):</b><br>CMT SURFACE CASING BOM                 |
| <b>Customer Representative:</b><br>AL DUNIHO           |  | <b>API / UWI: (leave blank if unknown)</b><br>AFEYSNVZGK4UCMSAAA |
| <b>Well Name:</b><br>PA                                |  | <b>Well Number:</b><br>522-11                                    |
| <b>Well Type:</b><br>Development Well                  | <b>Well Country:</b><br>United States of America |  |
| <b>H2S Present:</b>                                    | <b>Well State:</b><br>Colorado                   | <b>Well County:</b><br>Garfield                                  |

Dear Customer,

We hope that you were satisfied with the service quality of this job performed by Halliburton. It is the aim of our management and service personnel to deliver equipment and service of a standard unmatched in the service sector of the energy industry.

Please take the time to let us know if our performance met with your satisfaction. Please be as critical as possible to ensure we constantly improve our service. Your comments are of great value to us and are intended for the exclusive use of Halliburton.

### CUSTOMER SATISFACTION SURVEY

| CATEGORY                | CUSTOMER SATISFACTION RESPONSE                                 |                      |
|-------------------------|--|----------------------|
| Survey Conducted Date   | The date the survey was conducted                              | 5/24/2013            |
| Survey Interviewer      | The survey interviewer is the person who initiated the survey. | JOHN KEANE (HB58526) |
| Customer Participation  | Did the customer participate in this survey? (Y/N)             | Yes                  |
| Customer Representative | Enter the Customer representative name                         | AL DUNIHO            |
| HSE                     | Was our HSE performance satisfactory? Circle Y or N            | Yes                  |
| Equipment               | Were you satisfied with our Equipment? Circle Y or N           | Yes                  |
| Personnel               | Were you satisfied with our people? Circle Y or N              | Yes                  |
| Customer Comment        | Customer's Comment   | GOOD JOB MEN !       |

|                           |
|---------------------------|
| <b>CUSTOMER SIGNATURE</b> |
|---------------------------|



|  |  |   |
|--|--|---|
| <b>Sales Order #:</b><br>900461039                     | <b>Line Item:</b><br>10                          | <b>Survey Conducted Date:</b><br>5/24/2013                        |
| <b>Customer:</b><br>WPX ENERGY ROCKY MOUNTAIN LLC-EBUS |  | <b>Job Type (BOM):</b><br>CMT SURFACE CASING BOM                  |
| <b>Customer Representative:</b><br>AL DUNIHO           |  | <b>API / UWI: (leave blank if unknown)</b><br>AFEYSNVVZGK4UCMSAAA |
| <b>Well Name:</b><br>PA                                |  | <b>Well Number:</b><br>522-11                                     |
| <b>Well Type:</b><br>Development Well                  | <b>Well Country:</b><br>United States of America |   |
| <b>H2S Present:</b>                                    | <b>Well State:</b><br>Colorado                   | <b>Well County:</b><br>Garfield                                   |

*KEY PERFORMANCE INDICATORS*

|   |           |
|---|-----------|
| General   |           |
| <b>Survey Conducted Date</b><br>The date the survey was conducted | 5/24/2013 |

|  |                         |
|--|-------------------------|
| Cementing KPI Survey   |                         |
| <b>Type of Job</b><br>Select the type of job. (Cementing or Non-Cementing)   | 0                       |
| <b>Select the Maximum Deviation range for this Job</b><br>What is the highest deviation for the job you just completed? This may not be the maximum well deviation.  | Vertical                |
| <b>Total Operating Time (hours)</b><br>Total Operating Hours Including Rig-up, Pumping, Rig-down. Enter in decimal format.   | 3                       |
| <b>HSE Incident, Accident, Injury</b><br>HSE Incident, Accident, Injury. This should be recordable incidents only.   | No                      |
| <b>Was the job purpose achieved?</b><br>Was the job delivered correctly as per customer agreed design?   | Yes                     |
| <b>Operating Hours (Pumping Hours)</b><br>Total number of hours pumping fluid on this job. Enter in decimal format.  | 1                       |
| <b>Customer Non-Productive Rig Time (hrs)</b><br>Lost time due to Halliburton in the start, execution, or completion of an ordered service or product, or delays in a follow-on service. Enter in decimal format. 0 if none. | 0                       |
| <b>Type of Rig Classification Job Was Performed</b><br>Type Of Rig (classification) Job Was Performed On   | Drilling Rig (Portable) |
| <b>Number Of JSAs Performed</b><br>Number Of Jsas Performed  | 6                       |
| <b>Number of Unplanned Shutdowns</b><br>Unplanned shutdown is when injection stops for any period of time.   | 0                       |
| <b>Was this a Primary Cement Job (Yes / No)</b>  | Yes                     |

|  |  |   |
|--|--|---|
| <b>Sales Order #:</b><br>900461039                     | <b>Line Item:</b><br>10                          | <b>Survey Conducted Date:</b><br>5/24/2013                        |
| <b>Customer:</b><br>WPX ENERGY ROCKY MOUNTAIN LLC-EBUS |  | <b>Job Type (BOM):</b><br>CMT SURFACE CASING BOM                  |
| <b>Customer Representative:</b><br>AL DUNIHO           |  | <b>API / UWI: (leave blank if unknown)</b><br>AFEYSNVVZGK4UCMSAAA |
| <b>Well Name:</b><br>PA                                |  | <b>Well Number:</b><br>522-11                                     |
| <b>Well Type:</b><br>Development Well                  | <b>Well Country:</b><br>United States of America |   |
| <b>H2S Present:</b>                                    | <b>Well State:</b><br>Colorado                   | <b>Well County:</b><br>Garfield                                   |

|  |     |
|--|-----|
| Primary Cement Job= Casing job, Liner job, or Tie-back job.  |     |
| <b>Did We Run Wiper Plugs?</b><br>Did We Run Top And Bottom Casing Wiper Plugs?  | Top |
| <b>Mixing Density of Job Stayed in Designed Density Range (0-100%)</b><br>Density Range defined as +/- .20 ppg. Calculation: Total BBLs cement mixed at designed density divided by total BBLs of cement multiplied by 100       | 95  |
| <b>Was Automated Density Control Used?</b><br>Was Automated Density Control (ADC) Used ?   | Yes |
| <b>Pump Rate (percent) of Job Stayed At Designed Pump Rate</b><br>Pump Rate range defined as +/- 1bbl/min. Calculation: Total BBLs of fluid pumped at the designed rate divided by Total BBLs of fluid pumped, multiplied by 100 | 96  |
| <b>Nbr of Remedial Sqz Jobs Rqd - Competition</b><br>Number Of Remedial Squeeze Jobs Required After Primary Job Performed By Competition   | 0   |
| <b>Nbr of Remedial Plug Jobs Rqd - HES</b><br>Number Of Remedial Plug Jobs Needed After Primary Plug Pumped By HES   | 0   |
| <b>Nbr of Remedial Sqz Jobs Rqd - HES</b><br>Number Of Remedial Squeeze Jobs Required After Primary Job Performed By HES   | 0   |