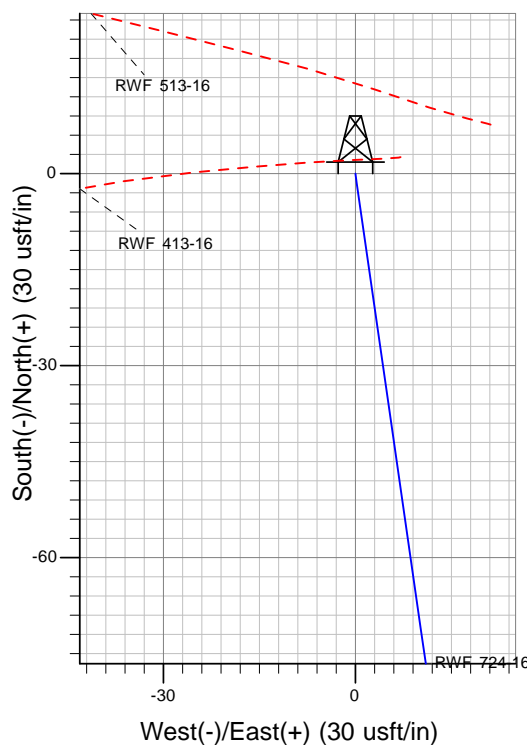
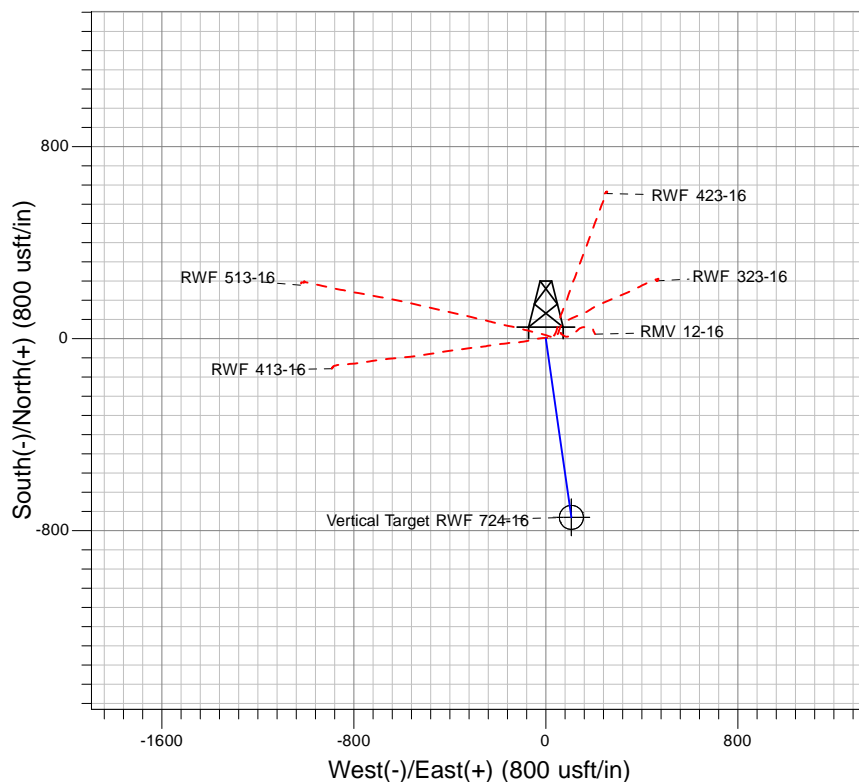
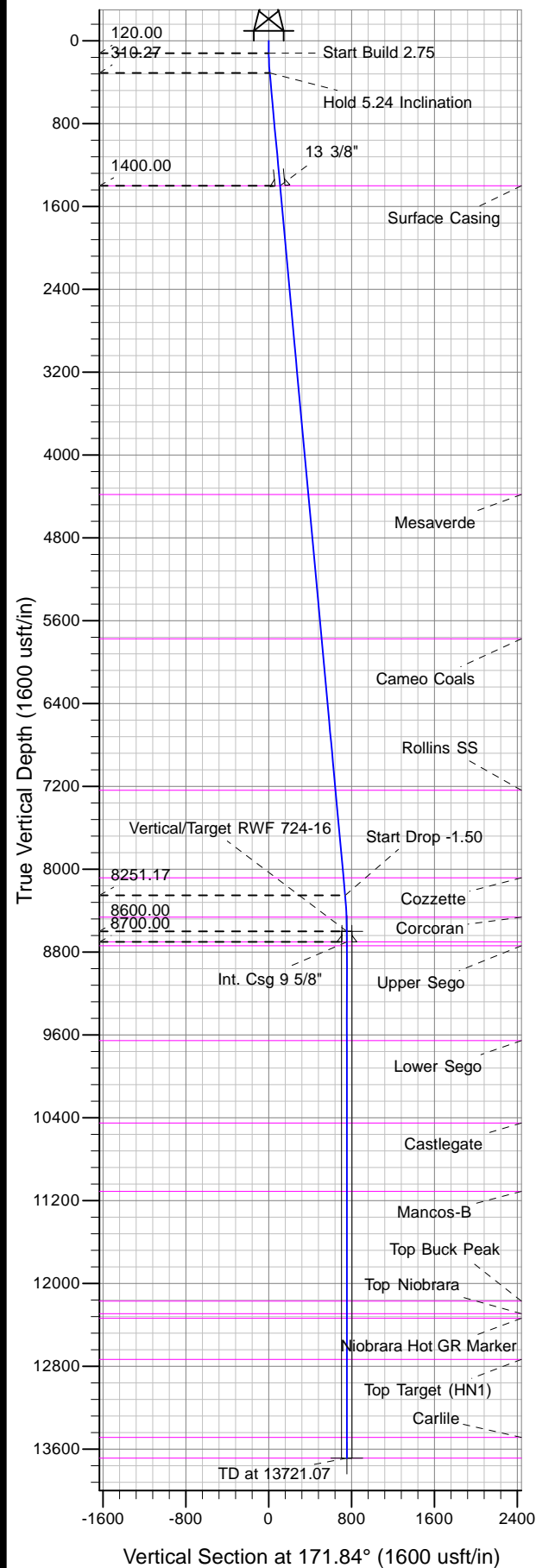




Well Name: RWF 724-16
Surface Location: RMV 12-16 Pad
North American Datum 1983 , US State Plane 1983 , Colorado Central Zone
Ground Elevation: 5582.00
+N/-S +E/-W Northing Easting Latitude Longitude
0.00 0.00 1624254.40 2323803.60 39.52286 -107.89735
KELLY BUSHING @ 5607.00usft (Aztec (25' RKB) kjs)



Project: RU 16-06S-094W
Site: RMV 12-16 Pad
Well: RWF 724-16
Design #1 24Jul13 kjs



Azimuths to True North
Magnetic North: 10.01°
Magnetic Field
Strength: 52108.3snT
Dip Angle: 65.74°
Date: 7/24/2013
Model: IGRF2005-10

ANNOTATIONS

TVD	MD	Inc	Azi	+N/-S	+E/-W	Vsect	Departure	Annotation
120.00	120.00	0.00	0.00	0.00	0.00	0.00	0.00	Start Build 2.75
310.27	310.53	5.24	171.84	-8.62	1.24	8.71	8.71	Hold 5.24 Inclination
1400.00	1404.84	5.24	171.84	-107.54	15.43	108.64	108.64	Surface Casing
8251.17	8284.76	5.24	171.84	-729.47	104.64	736.93	736.93	Start Drop -1.50
8600.00	8634.07	0.00	0.00	-745.27	106.91	752.89	752.89	Vertical
8700.00	8734.07	0.00	0.00	-745.27	106.91	752.89	752.89	Intermediate Casing
13687.00	13721.07	0.00	0.00	-745.27	106.91	752.89	752.89	TD at 13721.07