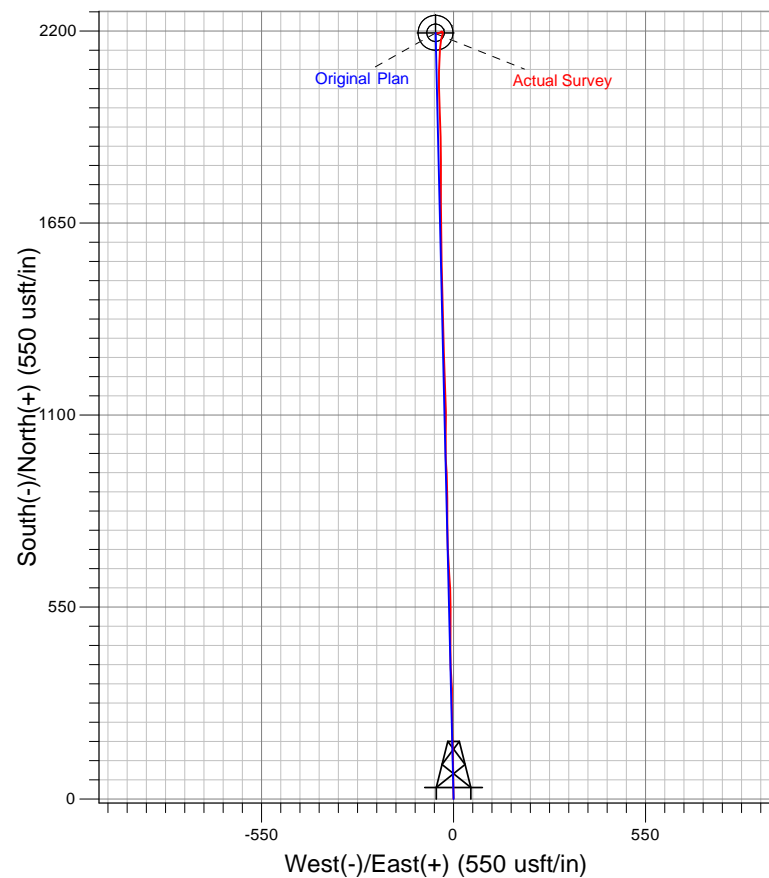
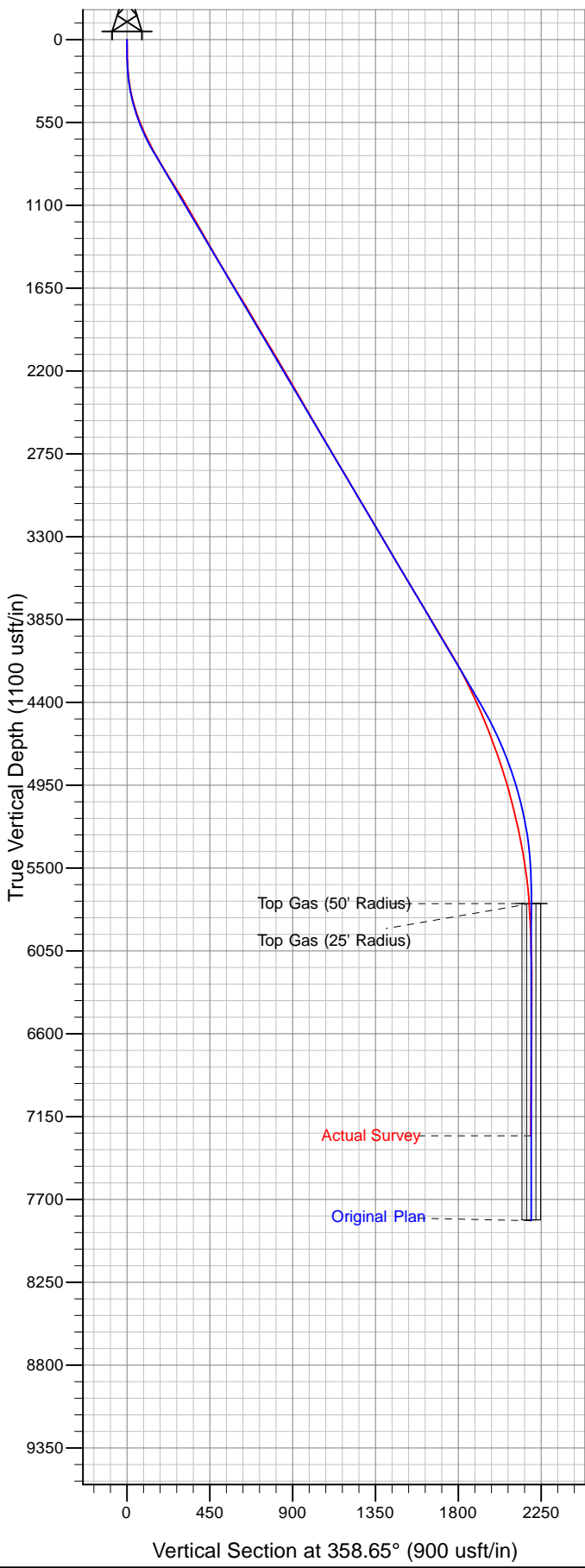




Well Name: PA 21-11
Surface Location: PA 22-11 Pad
North American Datum 1983 , US State Plane 1983 . Colorado Central Zone
Ground Elevation: 6274.0
+N/-S +E/-W Northing Easting Latitude Longitude Slot
0.0 0.0 1599312.79 2303403.58 39° 27' 10.487 N 107° 58' 2.058 W B11
KB @ 6295.0usft (Cyclone 17 (21' KB))



Compass rose diagram showing True North (T) and Magnetic North (M).

Azimuths to True North
Magnetic North: 10.08°

Magnetic Field
Strength: 52025.9snT
Dip Angle: 65.65°
Date: 6/16/2013
Model: IGRF2010