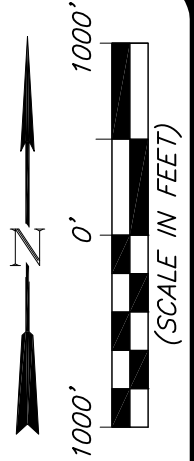
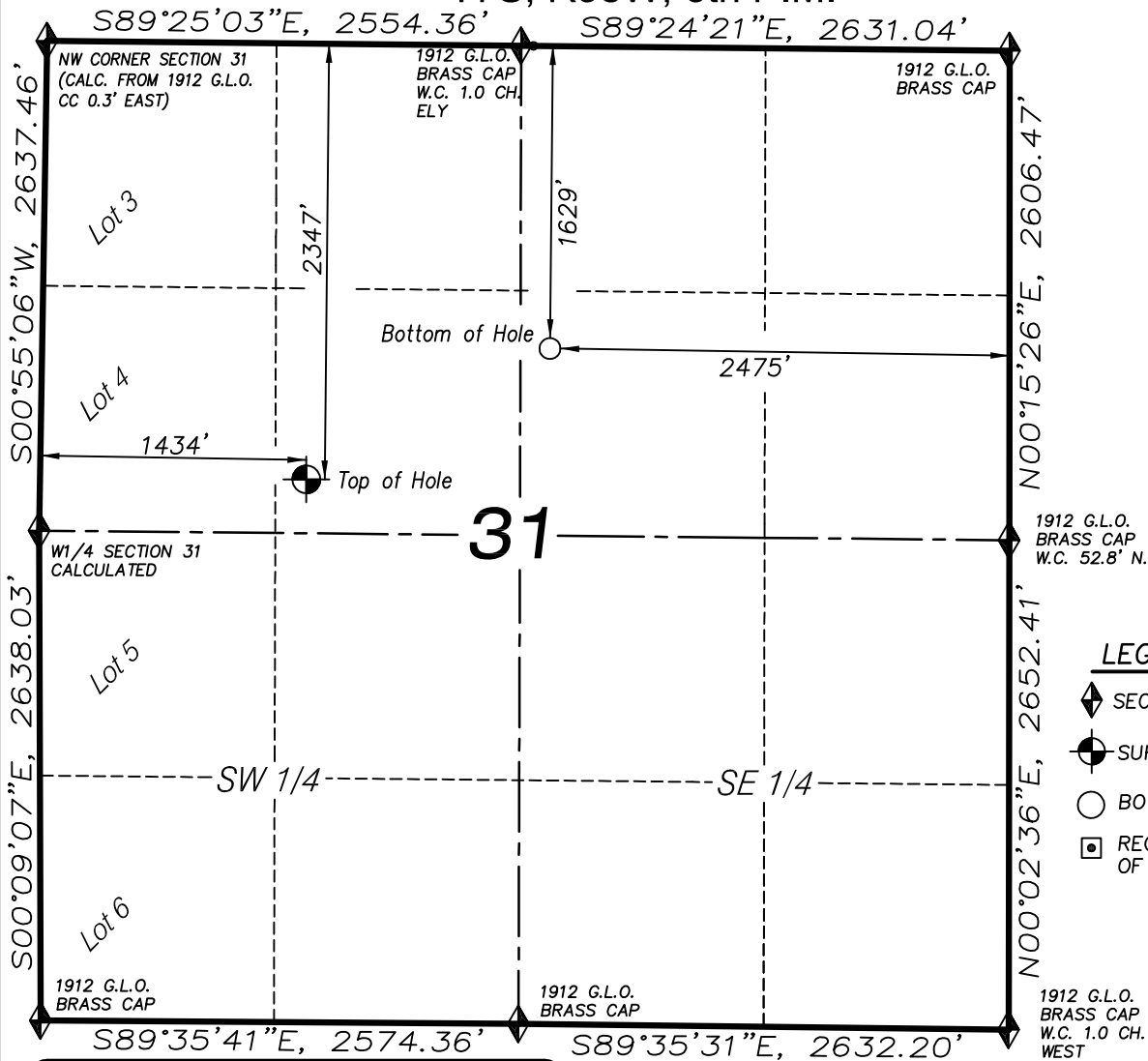


T7S, R95W, 6th P.M.



LEGEND

- SECTION CORNER LOCATED
- SURFACE LOCATION
- BOTTOM HOLE LOCATION
- RECORD LOCATION OF CORNER

NOTES

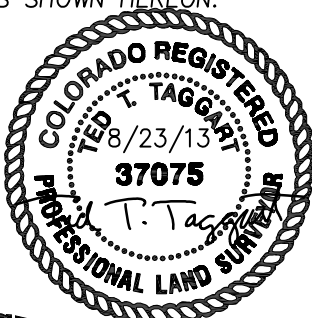
1. WELL FOOTAGES ARE MEASURED AT RIGHT ANGLES TO SECTION LINES.
2. BASIS OF BEARING: GEODETIC- BASED ON GPS OBSERVATIONS.
3. ELEVATIONS BASED ON GPS OBSERVATIONS, NAVD 88 (GEOID 03), POST PROCESSED USING NGS OPUS.
4. THE BOTTOM HOLE BEARS N61°39'33"E, 1485' FROM TOP OF HOLE.
5. SEE ADDENDUM TO LEGAL PLAT (SHEET 1i) FOR VISIBLE IMPROVEMENTS WITHIN 500 FEET OF THE PROPOSED OIL & GAS LOCATION.
6. ALL GPS PROCEDURES COMPLY WITH COGCC RULE NO. 215.
PDOP READING: 2.8 GPS OPERATOR: BRIAN TAGGART

Federal 31-7B (PF-31) Well

(WELLHEAD LOCATION) NAD 83
 LATITUDE = 39.394891° N
 LONGITUDE = 108.043574° W
 (BOTTOM HOLE LOCATION) NAD 83
 LATITUDE = 39.396839° N
 LONGITUDE = 108.038961° W
 ELEV. UNGRADED GROUND= 5834'

CERTIFICATE OF SURVEYOR

I, TED TAGGART OF FRUITA, COLORADO HEREBY CERTIFY THAT THIS MAP WAS MADE FROM NOTES TAKEN DURING AN ACTUAL SURVEY MADE BY ME OR UNDER MY DIRECTION FOR ENCANA OIL & GAS (USA) INC. AND THAT THIS LOCATION HAS BEEN STAKED ON THE GROUND AS SHOWN HEREON.



906 Main Street
 Evanston, Wyoming 82930
 Phone No. (307) 789-4545

MAP to ACCOMPANY
 APPLICATION for PERMIT to DRILL
 Encana Oil & Gas (USA) Inc.
Federal 31-7B (PF-31) Well

SE1/4 NW1/4, SECTION 31
 T7S, R95W, 6th P.M.
 GARFIELD COUNTY, COLORADO

Location Plat		Scale: 1" = 1000'	SHEET 1c OF 10
Project No.	10-04-17	Date Surveyed: 6/01/10	
Date Drawn:	5/25/10	Latest Revision Date: 8/23/13	