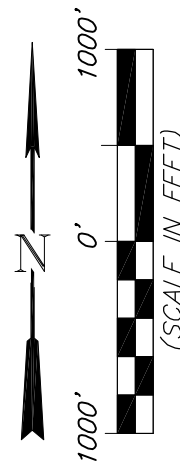
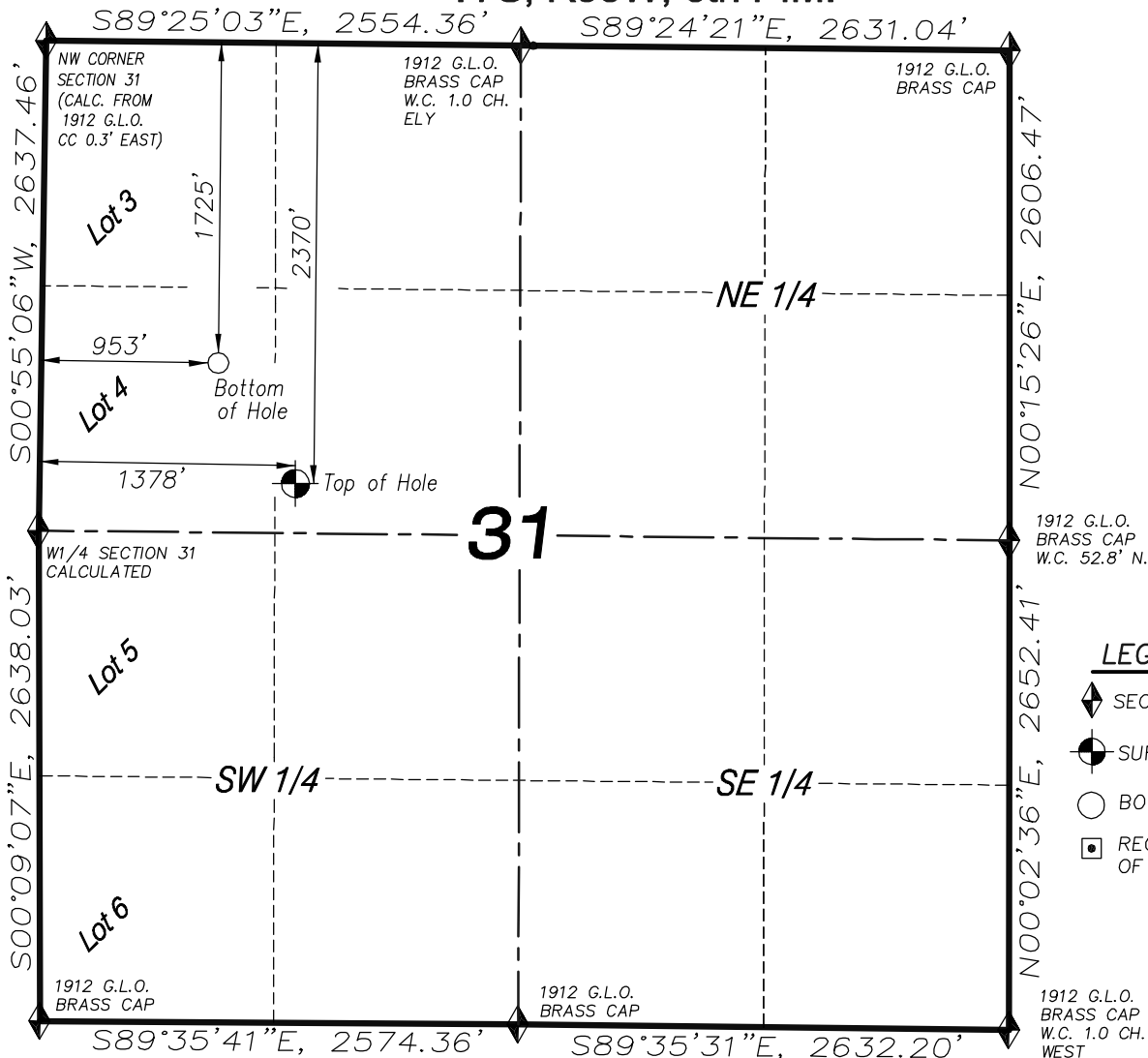


**T7S, R95W, 6th P.M.**



**LEGEND**

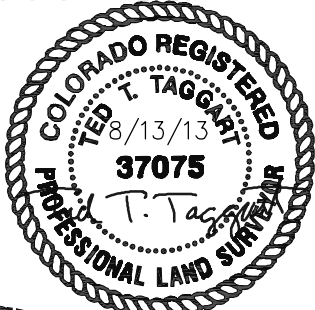
- ◆ SECTION CORNER LOCATED
- ⊙ SURFACE LOCATION
- BOTTOM HOLE LOCATION
- RECORD LOCATION OF CORNER

**Federal 31-5AA (PF-31) Well**

(WELLHEAD LOCATION) NAD 83  
 LATITUDE = 39.394831° N  
 LONGITUDE = 108.043771° W  
 (BOTTOM HOLE LOCATION) NAD 83  
 LATITUDE = 39.396607° N  
 LONGITUDE = 108.045247° W  
 ELEV. UNGRADED GROUND = 5834'

**CERTIFICATE OF SURVEYOR**

I, TED TAGGART OF FRUITA, COLORADO HEREBY CERTIFY THAT THIS MAP WAS MADE FROM NOTES TAKEN DURING AN ACTUAL SURVEY MADE BY ME OR UNDER MY DIRECTION FOR ENCANA OIL & GAS (USA) INC. AND THAT THIS LOCATION HAS BEEN STAKED ON THE GROUND AS SHOWN HEREON.



906 Main Street  
 Evanston, Wyoming 82930  
 Phone No. (307) 789-4545

**NOTES**

1. WELL FOOTAGES ARE MEASURED AT RIGHT ANGLES TO SECTION LINES.
2. BASIS OF BEARING: GEODETIC- BASED ON GPS OBSERVATIONS.
3. ELEVATIONS BASED ON GPS OBSERVATIONS, NAVD 88 (GEOID 03), POST PROCESSED USING NGS OPUS.
4. THE BOTTOM HOLE BEARS N32°35'32"W, 770' FROM TOP OF HOLE.
5. SEE ADDENDUM TO LEGAL PLAT (SHEET 1i) FOR VISIBLE IMPROVEMENTS WITHIN 500 FEET OF THE PROPOSED OIL & GAS LOCATION.
6. ALL GPS PROCEDURES COMPLY WITH COGCC RULE NO. 215.  
 PDOP READING: 2.8 GPS OPERATOR: BRIAN TAGGART

**MAP to ACCOMPANY**  
**APPLICATION for PERMIT to DRILL**  
**Encana Oil & Gas (USA) Inc.**  
**Federal 31-5AA (PF-31) Well**

**SE1/4 NW1/4, SECTION 31**  
**T7S, R95W, 6th P.M.**  
**GARFIELD COUNTY, COLORADO**

Location Plat		Scale: 1" = 1000'	SHEET <b>1f</b> OF 10
Project No.	10-04-17	Date Surveyed: 6/01/10	
Date Drawn: 5/25/10		Latest Revision Date: 8/13/13	