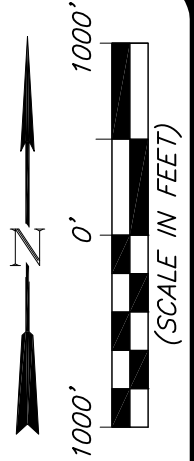
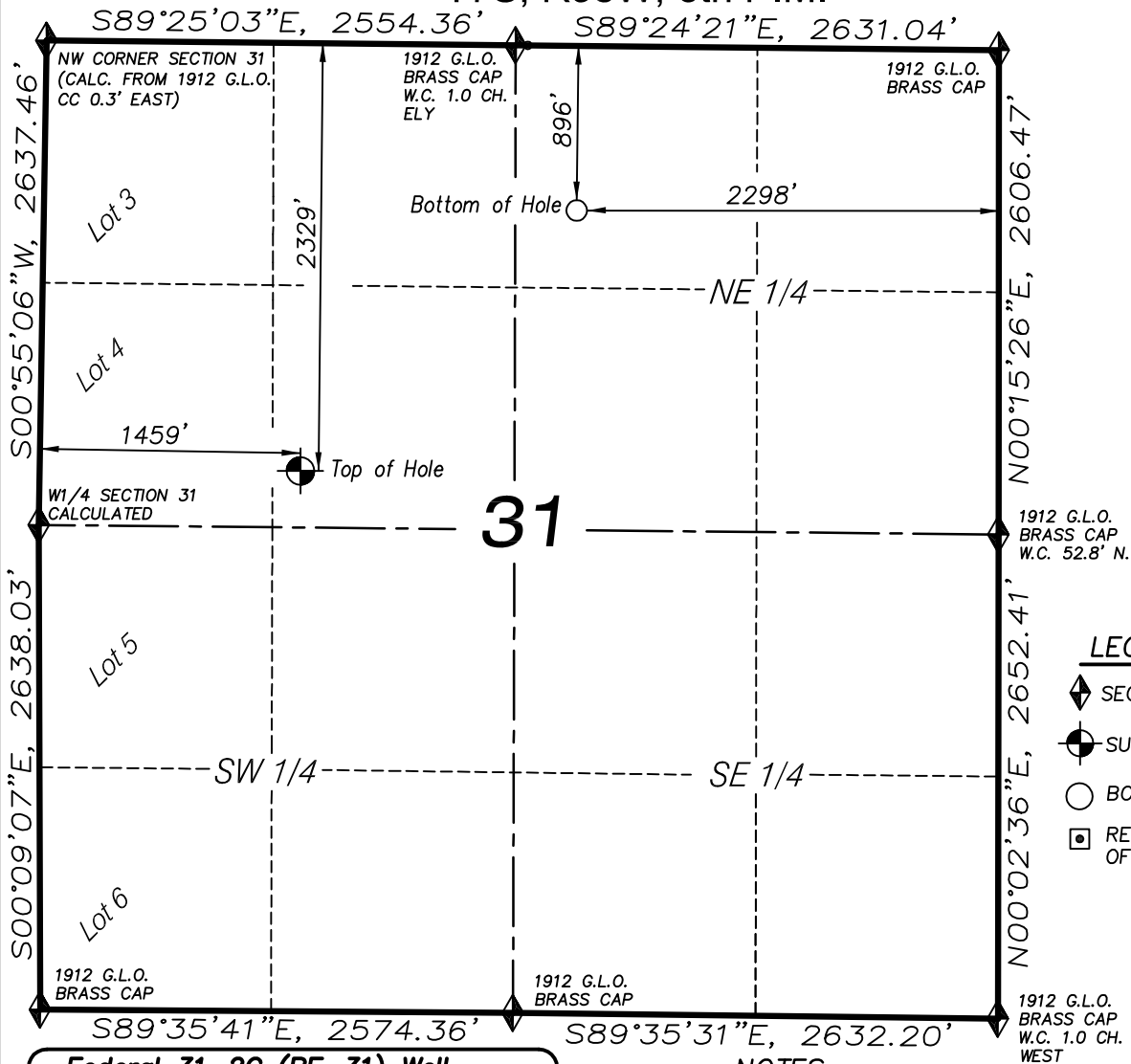


T7S, R95W, 6th P.M.



#### LEGEND

- ◆ SECTION CORNER LOCATED
- ⊙ SURFACE LOCATION
- BOTTOM HOLE LOCATION
- RECORD LOCATION OF CORNER

#### Federal 31-2C (PF-31) Well

(WELLHEAD LOCATION) NAD 83  
 LATITUDE = 39.394942° N  
 LONGITUDE = 108.043486° W  
 (BOTTOM HOLE LOCATION) NAD 83  
 LATITUDE = 39.398848° N  
 LONGITUDE = 108.038334° W  
 ELEV. UNGRADED GROUND= 5834'

#### CERTIFICATE OF SURVEYOR

I, TED TAGGART OF FRUITA, COLORADO HEREBY CERTIFY THAT THIS MAP WAS MADE FROM NOTES TAKEN DURING AN ACTUAL SURVEY MADE BY ME OR UNDER MY DIRECTION FOR ENCANA OIL & GAS (USA) INC. AND THAT THIS LOCATION HAS BEEN STAKED ON THE GROUND AS SHOWN HEREON.



906 Main Street  
 Evanston, Wyoming 82930  
 Phone No. (307) 789-4545

#### NOTES

1. WELL FOOTAGES ARE MEASURED AT RIGHT ANGLES TO SECTION LINES.
2. BASIS OF BEARING: GEODETIC- BASED ON GPS OBSERVATIONS.
3. ELEVATIONS BASED ON GPS OBSERVATIONS, NAVD 88 (GEOID 03), POST PROCESSED USING NGS OPUS.
4. THE BOTTOM HOLE BEARS N45°52'24"E, 2036' FROM TOP OF HOLE.
5. SEE ADDENDUM TO LEGAL PLAT (SHEET 1i) FOR VISIBLE IMPROVEMENTS WITHIN 500 FEET OF THE PROPOSED OIL & GAS LOCATION.
6. ALL GPS PROCEDURES COMPLY WITH COGCC RULE NO. 215.  
 PDOP READING: 2.8 GPS OPERATOR: BRIAN TAGGART

MAP to ACCOMPANY  
 APPLICATION for PERMIT to DRILL  
 Encana Oil & Gas (USA) Inc.  
**Federal 31-2C (PF-31) Well**

SE1/4 NW1/4, SECTION 31  
 T7S, R95W, 6th P.M.  
 GARFIELD COUNTY, COLORADO

Location Plat		Scale: 1" = 1000'	SHEET <b>1g</b> OF 10
Project No.	10-04-17	Date Surveyed: 6/01/10	
Date Drawn:	5/25/10	Latest Revision Date: 8/23/13	