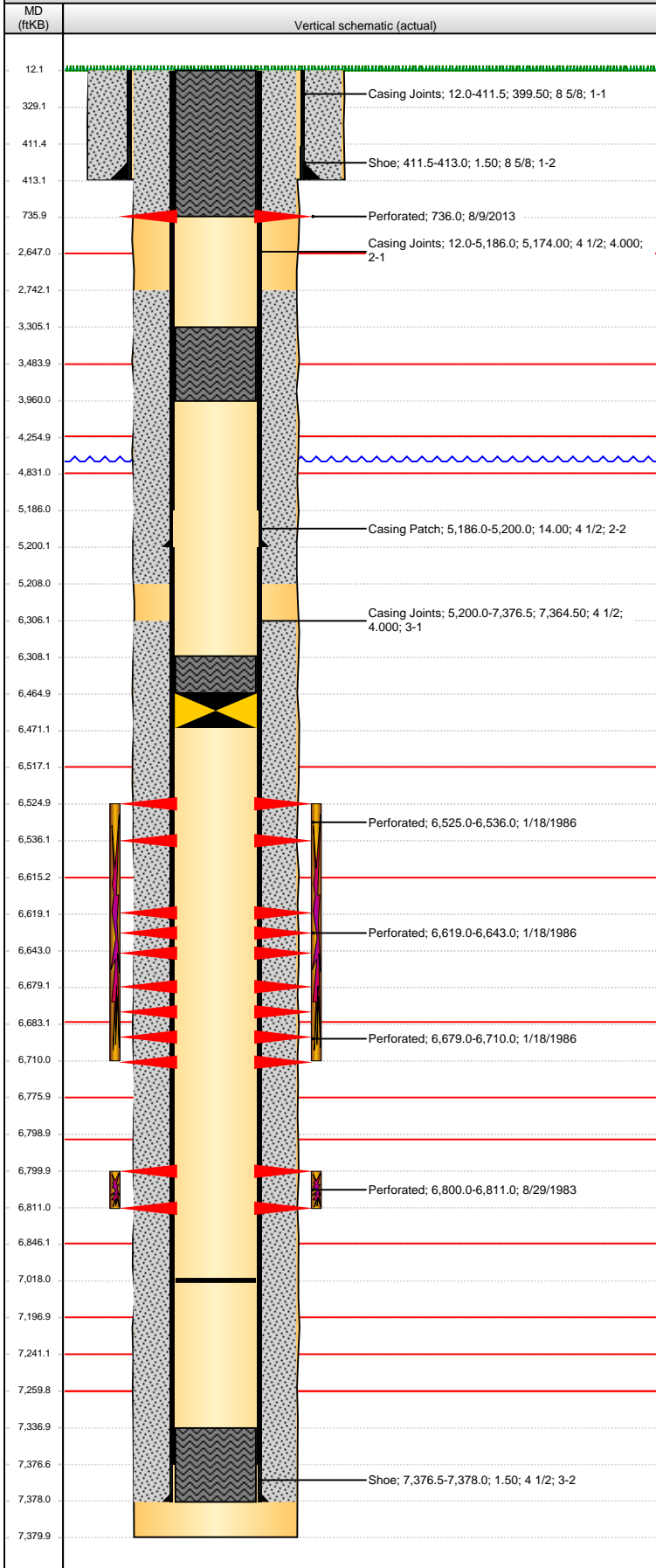


Well Name: LARSEN 01-25G

VERTICAL - ORIGINAL HOLE, 8/27/2013 12:31:52 PM



Well Header

API	Business Unit	District	Well Config
05-123-11091	WATTENBERG	15	VERTICAL
Original KB Elevation (ft)	KB - GL / MSL (ftKB)	Spud Date	P & A Date
4,643.00	12.00	5/22/1983	8/13/2013

Comment

CSG RPR 4/00, PATCH @ 5186'; 10/11 HOLE IN CASING 2743-2728'

Directions To Well

RD 59 & RD 66. EAST 2/10. SOUTH TO BATTERY. STAY ON WEST SIDE TO GRAIN BEND. WEST 100' & SOUTH INTO.

Congressional Location

Quarter 1	Quarter 2	Quarter 3	Quarter 4	Section	Township	Twnshp N...	Range	Rng E/W Dir
		NW	NW	25	6	N	64	W

Bottom Hole Location

North-South Distance (ft)	From N or S Line	East-West Distance (ft)	From E or W Line
---------------------------	------------------	-------------------------	------------------

Plug Back Total Depths

Date	Depth (ftKB)	Method	Com
6/3/1983	7,337.0	CASING TALLY	FLOAT COLLAR
10/25/1983	7,292.0	CASED HOLE LOG	DEPTH LOGGER ON CBL
5/3/2000	7,008.0	TAG	C/O & LAND TBG
10/18/2011	7,018.0	TAG	BIT & SCRAPER.

Wellbore Sections

Section Des	Size (in)	Act Top (ftKB)	Act Btm (ftKB)
SURFACE	12 1/4	12.0	413.0
PRODUCTION	7 7/8	413.0	7,380.0

Zone Statuses

Zone Name	Status Date	Status	Job
CODELL	2/16/1984	PR	DRILLING/COMPLETION - ORIGINAL, 5/22/1983 06:00
CODELL	4/26/2000	SI	CASING REPAIR, 4/24/2000 06:00
CODELL	5/8/2000	PR	CASING REPAIR, 4/24/2000 06:00
CODELL	10/18/2011	SI	RE-FRAC, 10/17/2011 06:00
NIOBRARA	2/18/1986	PR	RECOMPLETION, 1/17/1986 06:00
NIOBRARA	4/26/2000	SI	CASING REPAIR, 4/24/2000 06:00
NIOBRARA	5/8/2000	PR	CASING REPAIR, 4/24/2000 06:00
NIOBRARA	10/18/2011	SI	RE-FRAC, 10/17/2011 06:00

Casing Strings

Surface, 413.0ftKB

Casing Description	Run Date	OD (in)	Wt/Len (l...)	Grade	Top (ftKB)	MD (ftKB)
Surface	5/23/1983	8 5/8	24.00	?	12.0	413.0

Production, 5,200.0ftKB

Casing Description	Run Date	OD (in)	Wt/Len (l...)	Grade	Top (ftKB)	MD (ftKB)
Production	4/28/2000	4 1/2	11.60	N-80	12.0	5,200.0

Production, 7,378.0ftKB

Casing Description	Run Date	OD (in)	Wt/Len (l...)	Grade	Top (ftKB)	MD (ftKB)
Production	6/4/1983	4 1/2	11.60	N-80	12.0	7,378.0

Cement

Description	Top Depth (ftKB)	Bottom Depth (ftKB)
Surface Cement	12.0	413.0
Production Cement	6,306.0	7,378.0
CASING REPAIR ANNULAR CEMENT	2,742.0	5,208.0
Cement Plug	3,305.0	3,960.0
Cement Plug	6,308.0	6,465.0
Cement Plug	12.1	736.0
Cement Plug	12.1	736.0

Tubing Components

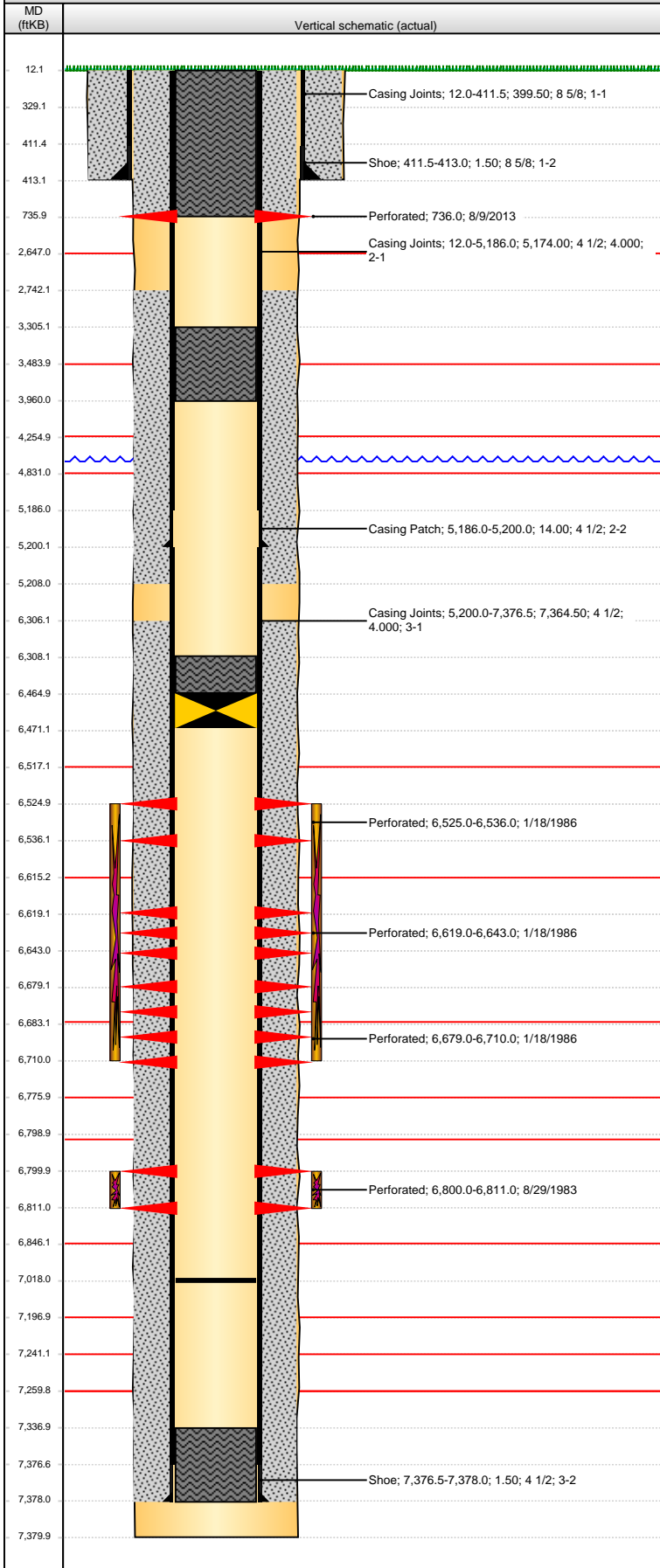
Item Des	OD (in)	Wt (lb/ft)	Grade	Jts	Len (ft)	Btm (ftKB)	Btm (TVD) (ftKB)
----------	---------	------------	-------	-----	----------	------------	------------------

Perforation Data

Zone	Bnch/St g	Entered Shot Total	Top (ftKB)	Btm (ftKB)	Date
		2	736.00	736.00	8/9/2013
NIOBRARA, ORIGINAL HOLE	A	4	6,525.00	6,536.00	1/18/1986

Well Name: LARSEN 01-25G

VERTICAL - ORIGINAL HOLE, 8/27/2013 12:31:54 PM



Perforation Data					
Zone	Brnch/St g	Entered Shot Total	Top (ftKB)	Btm (ftKB)	Date
NIOBRARA, ORIGINAL HOLE	B	8	6,619.00	6,643.00	1/18/1986
NIOBRARA, ORIGINAL HOLE	C	4	6,679.00	6,710.00	1/18/1986
CODELL, ORIGINAL HOLE		45	6,800.00	6,811.00	8/29/1983

Stimulations & Treatments			
Date	Zone	Primary Job Type	
11/1/1983	CODELL, ORIGINAL HOLE	DRILLING/COMPLETION - ORIGINAL	
Technical Result		Tech Result Details	Tech Result Note

Comment			
Date	Zone	Primary Job Type	
1/21/1986	NIOBRARA, ORIGINAL HOLE	RECOMPLETION	
Technical Result	Tech Result Details		Tech Result Note
Failure	Screen-Out		

SCREENED OUT @ 4PPG STAGE

Other In Hole				
Run Date	Des	OD (in)	Top (ftKB)	Btm (ftKB)
10/18/2011	Retrievable Bridge Plug	3.99	6,465.0	6,471.0

Logs			
Date	Type	Top (ftKB)	Btm (ftKB)
6/2/1983	DENSITY	3,390.0	7,381.0
6/2/1983	GAMMA RAY	3,397.0	7,346.0
6/15/1983	COMPUTER PROCESSED LOG	3,397.0	7,346.0
10/28/1983	CEMENT BOND	6,138.0	7,284.0
10/19/2011	CBL/CCL/GR	2,300.0	5,540.0
8/8/2013	CBL/CCL/GR	2,300.0	4,750.0