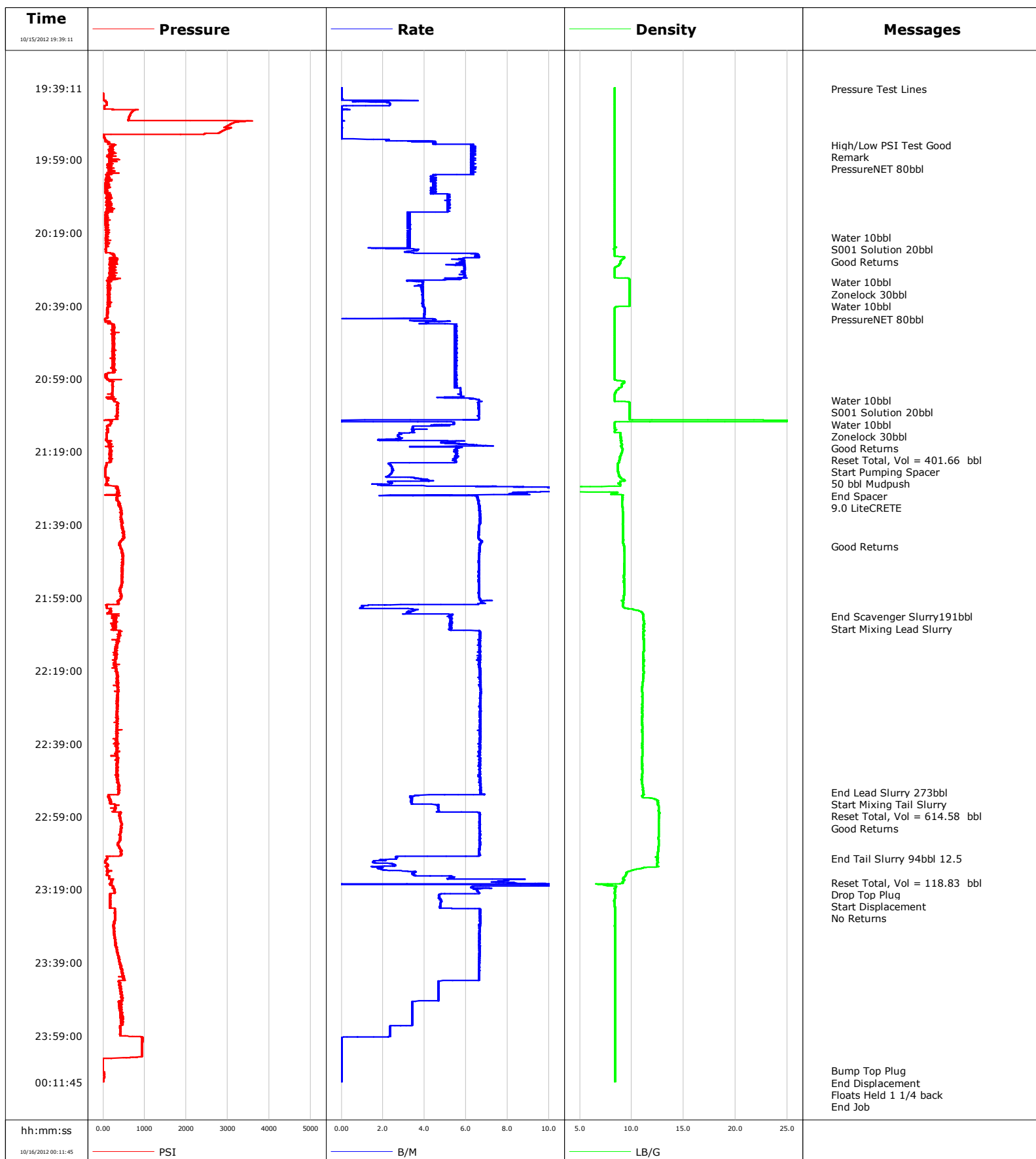


<b>Well</b>	<b>Client</b>
<b>Field</b>	<b>SIR No.</b>
<b>Engineer</b>	<b>Job Type</b>
<b>Country</b>	<b>Job Date</b>





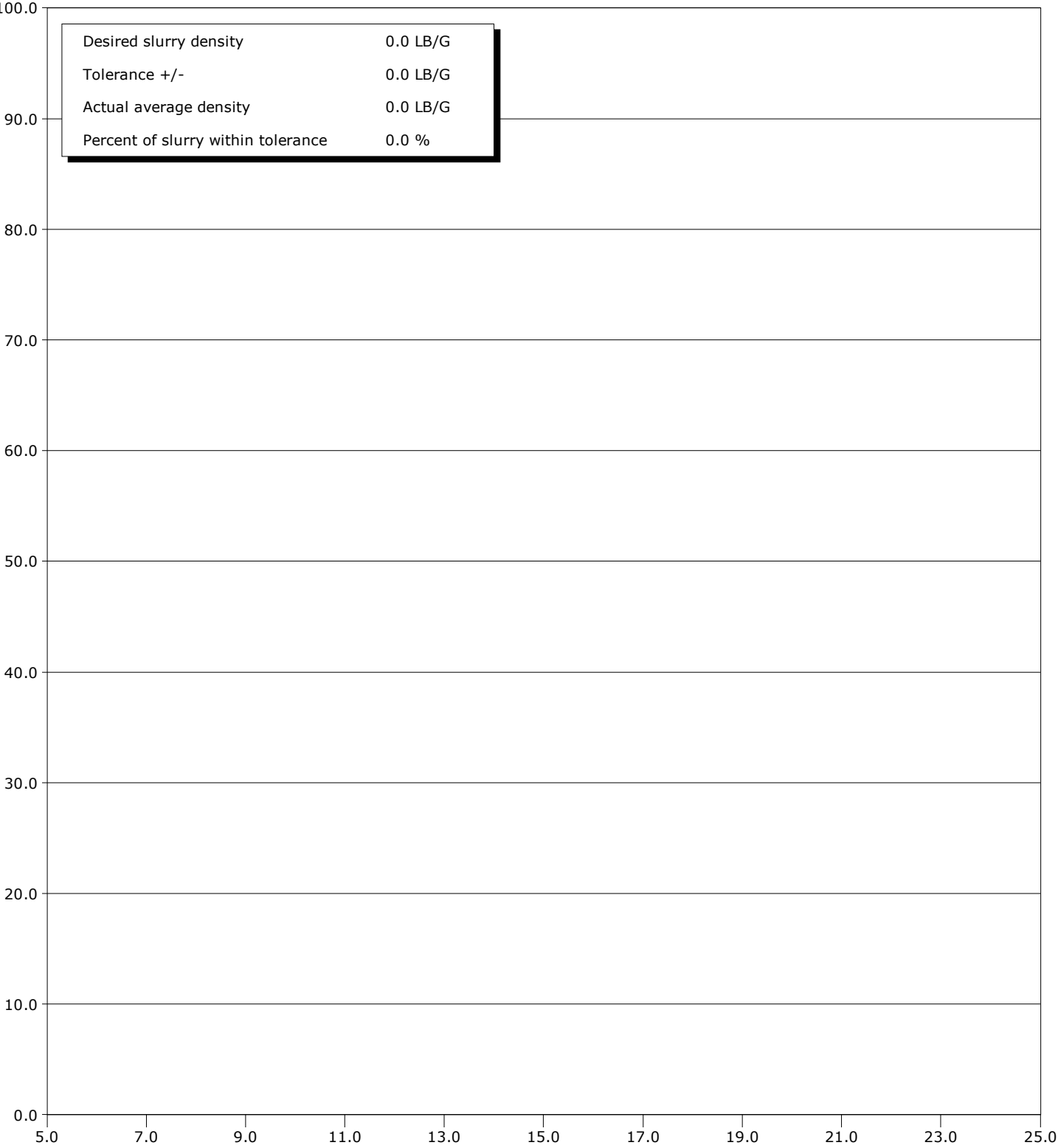
# Qa/Qc Density Report

<b>Well</b>	<b>Client</b>
<b>Field</b>	<b>SIR No.</b>
<b>Engineer</b>	<b>Job Type</b>
<b>Country</b>	<b>Job Date</b>

- 12/30/1972 05:23:12 to 12/30/1972 05:27:04

Desired slurry density	0.0 LB/G
Tolerance +/-	0.0 LB/G
Actual average density	0.0 LB/G
Percent of slurry within tolerance	0.0 %

% Cement Slurry Volume

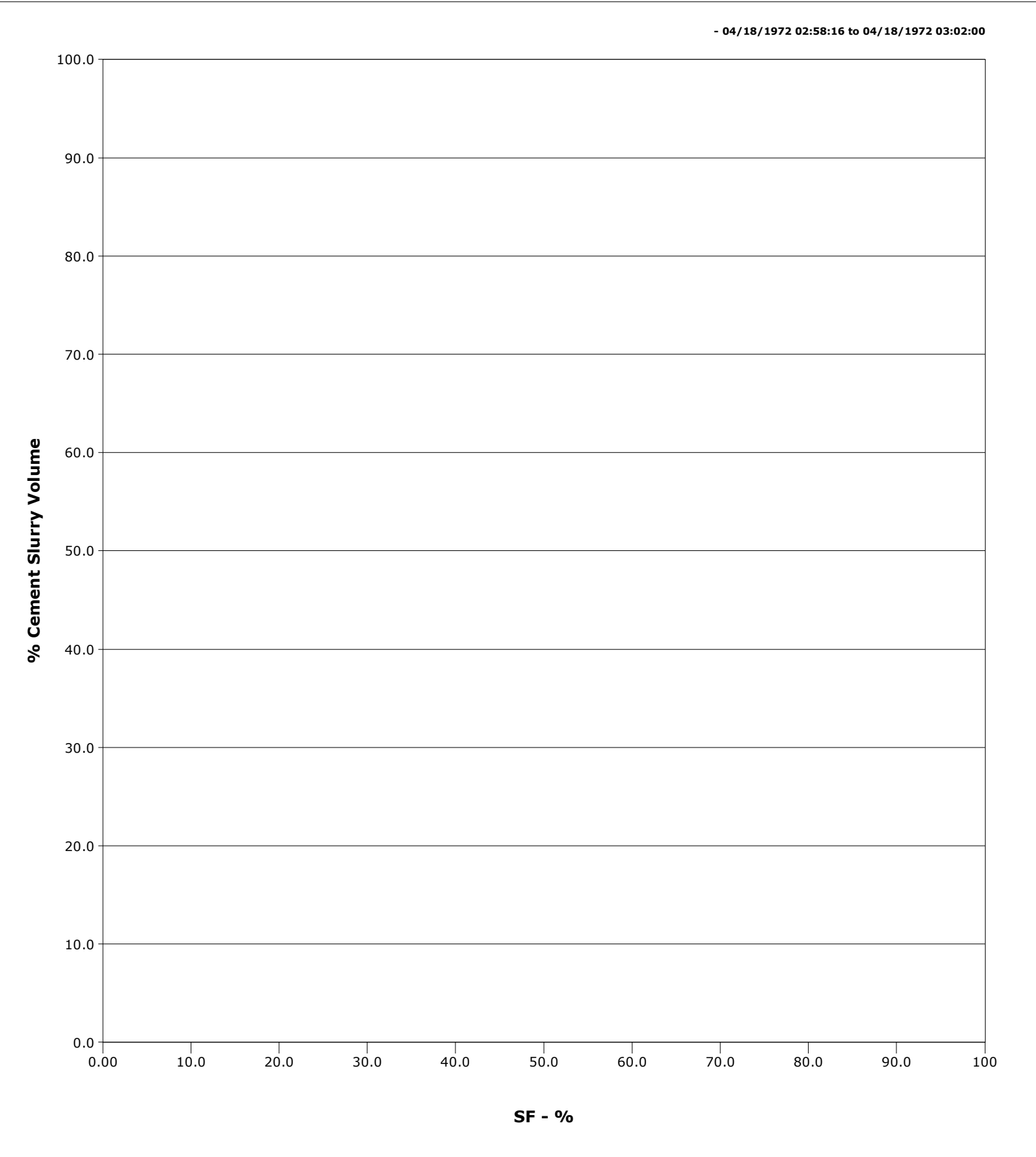


Density - LB/G



# Qa/Qc SFM Report

<b>Well</b>	<b>Client</b>
<b>Field</b>	<b>SIR No.</b>
<b>Engineer</b>	<b>Job Type</b>
<b>Country</b>	<b>Job Date</b>





# Cementing Service Report

				Customer Encana		Job Number 859982	
Well SGU 8509C-24		Location (legal) CO		Schlumberger Location GCO		Job Start Oct/15/2012	
Field Story Gulch		Formation Name/Type Dirty-Sandstone		Deviation	Bit Size 14.8 in	Well MD 3025.0 ft	Well TVD
County Garfield		State/Province CO		BHP	BHST 120 degF	BHCT 96 degF	Pore Press. Gradient
Well Master 0631414132		API/UWI 5045211650000					
Rig Name Patterson 330	Drilled For Gas	Service Via Land	Casing/Liner				
			Depth, ft	Size, in	Weight, lb/ft	Grade	Thread
Offshore Zone	Well Class New	Well Type Development	3025.0	9.630	36.0	K55	8RD
			0.0	0.000	0.0		
Drilling Fluid Type		Max. Density	Plastic Viscosity	Tubing/Drill Pipe			
				Depth,	Size,	Weight,	Grade
Service Line Cementing	Job Type Cem Surface Casing						
Max. Allowed Tub. Press 1500 psi	Max. Allowed Ann. Press	WH Connection Single Cement head	Perforations/Open Hole				
			Top,	Bottom,		No. of Shots	Total Interval
							Diameter
			Treat Down Casing	Displacement 230.0 bbl	Packer Type	Packer Depth	
			Tubing Vol.	Casing Vol.	Annular Vol. 555.0 bbl	Openhole Vol.	
Casing/Tubing Secured <input checked="" type="checkbox"/>	1 Hole Vol. Circulated prior to Cement <input checked="" type="checkbox"/>		Casing Tools			Squeeze Job	
Lift Pressure 1497 psi			Shoe Type Float		Squeeze Type		
Pipe Rotated <input type="checkbox"/>	Pipe Reciprocated <input type="checkbox"/>		Shoe Depth		Tool Type		
No. Centralizers	Top Plugs 1	Bottom Plugs	Stage Tool Type		Tool Depth		
Cement Head Type Single			Stage Tool Depth		Tail Pipe Size		
Job Scheduled For Oct/15/2012 12:00	Arrived on Location Oct/15/2012 12:00	Leave Location Oct/15/2012	Collar Type Guide		Tail Pipe Depth		
			Collar Depth		Sqz. Total Vol.		
Date	Time 24-hr clock	Treating Pressure PSI	Flow Rate B/M	Density LB/G	Volume BBL	Message	
10/15/2012	19:08:45					Started Acquisition	
10/15/2012	19:39:11	-50	0.0	8.36	0.0		
10/15/2012	19:39:30					Pressure Test Lines	
10/15/2012	19:39:30	-51	0.0	8.36	0.0		
10/15/2012	19:43:45	86	2.3	8.36	2.3		
10/15/2012	19:48:45	3159	0.0	8.37	3.3		
10/15/2012	19:53:45	102	2.7	8.37	4.2		
10/15/2012	19:54:56					High/Low PSI Test Good	
10/15/2012	19:54:56	213	6.2	8.37	9.6		
10/15/2012	19:54:57					Remark	
10/15/2012	19:54:57	236	6.2	8.37	9.7		
10/15/2012	19:55:13					PressureNET 80bbl	
10/15/2012	19:55:13	239	6.4	8.37	11.4		
10/15/2012	19:58:45	154	6.2	8.36	33.7		
10/15/2012	20:03:45	122	4.4	8.36	63.8		
10/15/2012	20:08:45	144	5.1	8.37	86.3		
10/15/2012	20:13:45	103	3.3	8.37	111.1		
10/15/2012	20:18:45	85	3.3	8.37	127.3		
10/15/2012	20:20:17					Water 10bbl	
10/15/2012	20:20:17	86	3.2	8.37	132.3		
10/15/2012	20:20:21					S001 Solution 20bbl	

Well			Field		Job Start		Customer		Job Number	
SGU 8509C-24			Story Gulch		Oct/15/2012		Encana		859982	
Date	Time 24-hr clock	Treating Pressure PSI	Flow Rate B/M	Density LB/G	Volume BBL	Message				
10/15/2012	20:20:44					Good Returns				
10/15/2012	20:20:44	58	3.3	8.37	133.8					
10/15/2012	20:23:45	60	3.6	8.33	143.4					
10/15/2012	20:28:45	163	5.9	8.38	171.4					
10/15/2012	20:32:26					Water 10bbl				
10/15/2012	20:32:26	131	3.9	9.77	191.6					
10/15/2012	20:32:28					Zonelock 30bbl				
10/15/2012	20:32:28	115	3.9	9.77	191.7					
10/15/2012	20:33:05					Water 10bbl				
10/15/2012	20:33:05	127	3.9	9.77	194.1					
10/15/2012	20:33:45	150	3.9	9.77	196.7					
10/15/2012	20:38:45	138	3.9	9.77	216.3					
10/15/2012	20:42:44					PressureNET 80bbl				
10/15/2012	20:42:44	40	4.4	8.37	231.8					
10/15/2012	20:43:45	132	4.2	8.37	236.3					
10/15/2012	20:48:45	238	5.4	8.37	263.3					
10/15/2012	20:53:45	239	5.4	8.37	290.6					
10/15/2012	20:58:45	60	5.4	8.37	317.9					
10/15/2012	21:03:45	217	5.8	8.37	345.8					
10/15/2012	21:04:56					Water 10bbl				
10/15/2012	21:04:56	263	6.6	8.37	352.9					
10/15/2012	21:07:09					S001 Solution 20bbl				
10/15/2012	21:07:09	336	6.6	9.78	367.6					
10/15/2012	21:07:14					Water 10bbl				
10/15/2012	21:07:14	342	6.6	9.78	368.1					
10/15/2012	21:07:16					Zonelock 30bbl				
10/15/2012	21:07:16	348	6.6	9.78	368.3					
10/15/2012	21:08:45	343	6.6	9.78	378.1					
10/15/2012	21:10:22					Good Returns				
10/15/2012	21:10:22	35	0.0	25.00	388.3					
10/15/2012	21:13:45	111	3.4	8.39	400.5					
10/15/2012	21:14:08					Reset Total, Vol = 401.66 bbl				
10/15/2012	21:14:08	83	2.9	8.93	401.7					
10/15/2012	21:14:21					Start Pumping Spacer				
10/15/2012	21:14:21	83	2.7	8.92	402.3					
10/15/2012	21:14:30					50 bbl Mudpush				
10/15/2012	21:14:30	85	2.7	8.91	402.7					
10/15/2012	21:18:45	181	5.5	9.08	422.0					
10/15/2012	21:23:45	58	2.5	8.63	444.2					
10/15/2012	21:28:45	336	9.8	3.99	459.5					
10/15/2012	21:31:00					End Spacer				
10/15/2012	21:31:00	392	3.4	9.12	481.3					
10/15/2012	21:31:44					9.0 LiteCRETE				
10/15/2012	21:31:44	342	6.6	9.10	486.0					
10/15/2012	21:33:45	368	6.7	9.09	499.3					
10/15/2012	21:38:45	455	6.7	9.14	532.6					
10/15/2012	21:43:45	422	6.7	9.12	565.8					
10/15/2012	21:44:55					Good Returns				
10/15/2012	21:44:55	412	6.7	9.24	573.6					
10/15/2012	21:48:45	474	6.6	9.30	599.0					
10/15/2012	21:53:45	444	6.6	9.24	632.1					
10/15/2012	21:58:45	430	6.6	9.23	665.1					
10/15/2012	22:03:45	302	5.3	11.13	687.3					
10/15/2012	22:04:11					End Scavenger Slurry191bbl				

Well			Field	Job Start		Customer	Job Number
SGU 8509C-24			Story Gulch	Oct/15/2012		Encana	859982
Date	Time 24-hr clock	Treating Pressure PSI	Flow Rate B/M	Density LB/G	Volume BBL	Message	
10/15/2012	22:04:18					Start Mixing Lead Slurry	
10/15/2012	22:04:18	208	5.3	11.09	690.2		
10/15/2012	22:08:45	407	6.7	11.13	714.7		
10/15/2012	22:13:45	297	6.6	11.14	748.0		
10/15/2012	22:18:45	311	6.7	11.10	781.2		
10/15/2012	22:23:45	368	6.7	11.00	814.6		
10/15/2012	22:28:45	340	6.7	11.01	848.1		
10/15/2012	22:33:45	333	6.7	11.00	881.5		
10/15/2012	22:38:45	331	6.7	11.00	914.8		
10/15/2012	22:43:45	360	6.6	10.98	948.1		
10/15/2012	22:48:45	364	6.7	10.96	981.4		
10/15/2012	22:52:22					End Lead Slurry 273bbl	
10/15/2012	22:52:22	386	6.7	11.10	1005.6		
10/15/2012	22:53:45	143	3.3	11.01	1012.8		
10/15/2012	22:54:43					Start Mixing Tail Slurry	
10/15/2012	22:54:43	174	3.4	12.51	1016.0		
10/15/2012	22:54:47					Reset Total, Vol = 614.58 bbl	
10/15/2012	22:54:47	183	3.4	12.49	1016.2		
10/15/2012	22:55:57					Good Returns	
10/15/2012	22:55:57	373	4.7	12.56	1020.5		
10/15/2012	22:58:45	399	6.7	12.62	1035.5		
10/15/2012	23:03:45	406	6.7	12.58	1068.7		
10/15/2012	23:08:45	430	6.6	12.52	1102.0		
10/15/2012	23:10:23					End Tail Slurry 94bbl 12.5	
10/15/2012	23:10:23	99	2.7	12.49	1110.9		
10/15/2012	23:13:45	106	2.2	10.05	1117.8		
10/15/2012	23:17:07					Reset Total, Vol = 118.83 bbl	
10/15/2012	23:17:07	209	8.3	9.15	1135.1		
10/15/2012	23:17:55					Drop Top Plug	
10/15/2012	23:17:55	170	11.8	7.67	1142.2		
10/15/2012	23:17:57					Start Displacement	
10/15/2012	23:17:57	221	10.7	7.50	1142.5		
10/15/2012	23:18:00					No Returns	
10/15/2012	23:18:00	233	9.9	8.14	1143.1		
10/15/2012	23:18:45	237	6.7	8.34	1148.1		
10/15/2012	23:23:45	166	4.8	8.38	1174.4		
10/15/2012	23:28:45	244	6.6	8.38	1206.8		
10/15/2012	23:33:45	305	6.6	8.40	1240.1		
10/15/2012	23:38:45	378	6.6	8.40	1273.3		
10/15/2012	23:43:45	510	6.6	8.40	1306.4		
10/15/2012	23:48:45	472	4.7	8.40	1330.3		
10/15/2012	23:53:45	472	3.4	8.40	1348.4		
10/15/2012	23:58:45	404	2.3	8.40	1362.9		
10/16/2012	00:03:45	934	0.0	8.40	1364.6		
10/16/2012	00:08:40					Bump Top Plug	
10/16/2012	00:08:40	-1	0.0	8.40	1364.7		
10/16/2012	00:08:41					End Displacement	
10/16/2012	00:08:41	-1	0.0	8.40	1364.7		
10/16/2012	00:08:45	-1	0.0	8.40	1364.7		
10/16/2012	00:09:16					Floats Held 1 1/4 back	
10/16/2012	00:09:16	23	0.0	8.40	1364.7		
10/16/2012	00:11:50					End Job	

Well SGU 8509C-24	Field Story Gulch	Job Start Oct/15/2012	Customer Encana	Job Number 859982
----------------------	----------------------	--------------------------	--------------------	----------------------

Post Job Summary

Average Pump Rates, bbl/min					Volume of Fluid Injected, bbl			
Slurry 5.0	N2		Mud 0.0	Maximum Rate 12.9	Total Slurry 1364.7	Mud 0.0	Spacer 690.2	N2
Treating Pressure Summary, psi					Breakdown Fluid			
Maximum 3588	Final 11	Average 325	Bump Plug to 900	Breakdown	Type	Volume		Density
Avg. N2 Percent		Designed Slurry Volume 558.0 bbl		Displacement 222.6 bbl	Mix Water Temp 55 degF	Cement Circulated to Surface? <input type="checkbox"/>		Volume
						Washed Thru Perfs <input type="checkbox"/>		To
Customer or Authorized Representative Ira Cox			Schlumberger Supervisor Travis Willardson			Circulation Lost <input checked="" type="checkbox"/>		Job Completed <input checked="" type="checkbox"/>
						-		-