

ATLAS RESOURCES, LLC

Prepared by: Maddie Lariviere
 Lease: SCHLACHTER
 Well Number: 843-31-14
 API: 05-095-06331-00
 Location: SWSW, Sec. 31 T8N-R43W
 BHL:
 Field: Amherst
 Unit:
 County: Phillips
 State: Colorado
 GL: 3680
 KB: 3692
 Spud Date: 10/4/2011
 Completion date: 10/6/2011
 First gas sales: 12/20/2011

WI	
NRI	500 0.26
Surface	1000 0.24
Mineral	1500 0.61
	2000 1.41
	2500 1.91
	2625 1.97

Geological tops	
Surface	3680
Pierre Shale	270
Sharron Springs	2332
Niobrara Chalk	2380
TD	2695

A-sect Wellhead Inc LM-70 7 X 4 1/2 1500# Screw on mandrel
 B-sect R&M LM-45 4 1/2 X 2 3/8 1500# Screw on mandrel
 Tree

Surface Cement
 Cement w/ 107 sk Portland 1/11 ASTM C 150 Cement
 and displace w/748 gal of water Cir 8 brls cement to
 the pit. 50 ft cement left in the 7" sp. Pumped by Schaal
 drilling. Plug down 12:15 PM 10/4/2011

Producing ZONE Niobrara
 Hole Size 9 7/8
 Surf Casing 7" 17# 12 jts meas 468.50
 Shoe 480.50

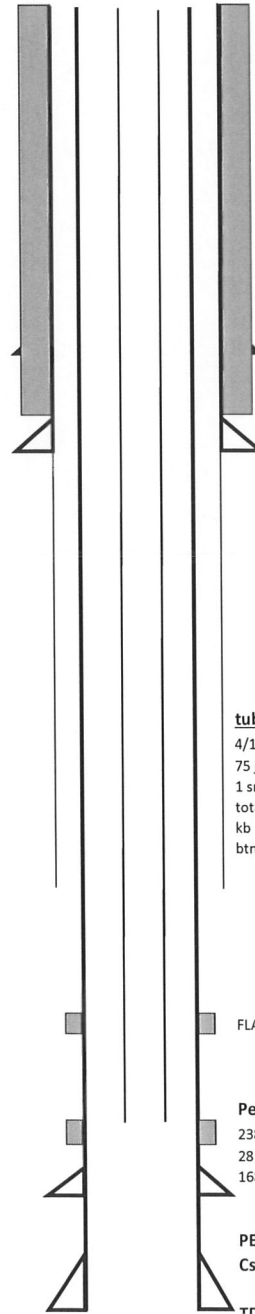
0
 Hole Size 6 1/4
 Prod csg 4 1/2 10.5# 67 jts meas: 2669.63

TOC 1,930

Cement Design
 Rig up ADT Cementers and cement
 w/80 sks type 1 neat cement .
 Displace w/42 brls water.
 Plug down @ 12:30 am on 10/7/2011
 held ok

Stimulation Treatment

Frac Niobrara with Maverick Stimulation using 28 # crosslinked gel
 50,080 #16/30 Daniels sand and 50,040 # 12/20 Texas Gold sand for a
 total of 100,120 # sand. 60.43 tons CO2. 563 BLWTR. 5 MIN-595 PSI
 10 MIN-586 PSI. 15 MIN -583 PSI MAX RATE 13.8 AVG RATE 8.6
 MAX PSI- 899 AVG PSI 613 isip-610 psi



tubing detail

4/13/2012
 75 jts 2 3/8 2441.3
 1 sn 2 3/8 1.10
 total tbg 2442.4
 kb 12.00
 btm tbg @ 2454.4

Perforations

2386-2414 W/ 6SPF
 28 TOTAL FT
 168 TOTAL SHOTS

PBTD 2,641.52
 Csg shoe 2,681.63
 TD 2,695