

Scale: 1" = 1000'  
Basis of bearing is assumed from GPS True North as shown.

- ⊗ standard GLO/BLM monument
- set standard monument
- \* from GLO/BLM
- \*\* calculated

KINDER MORGAN CO2 COMPANY, LP  
HF - 4  
425' FSL & 2293' FWL - surface location  
6247.8' grd.el. NAVD '88 (from OPUS)  
Section 1, T.37 N., R.19 W., NMPM  
1575' FNL & 2293' FWL - bottom hole  
Section 12, T.37 N., R.19 W., NMPM  
Montezuma County, CO

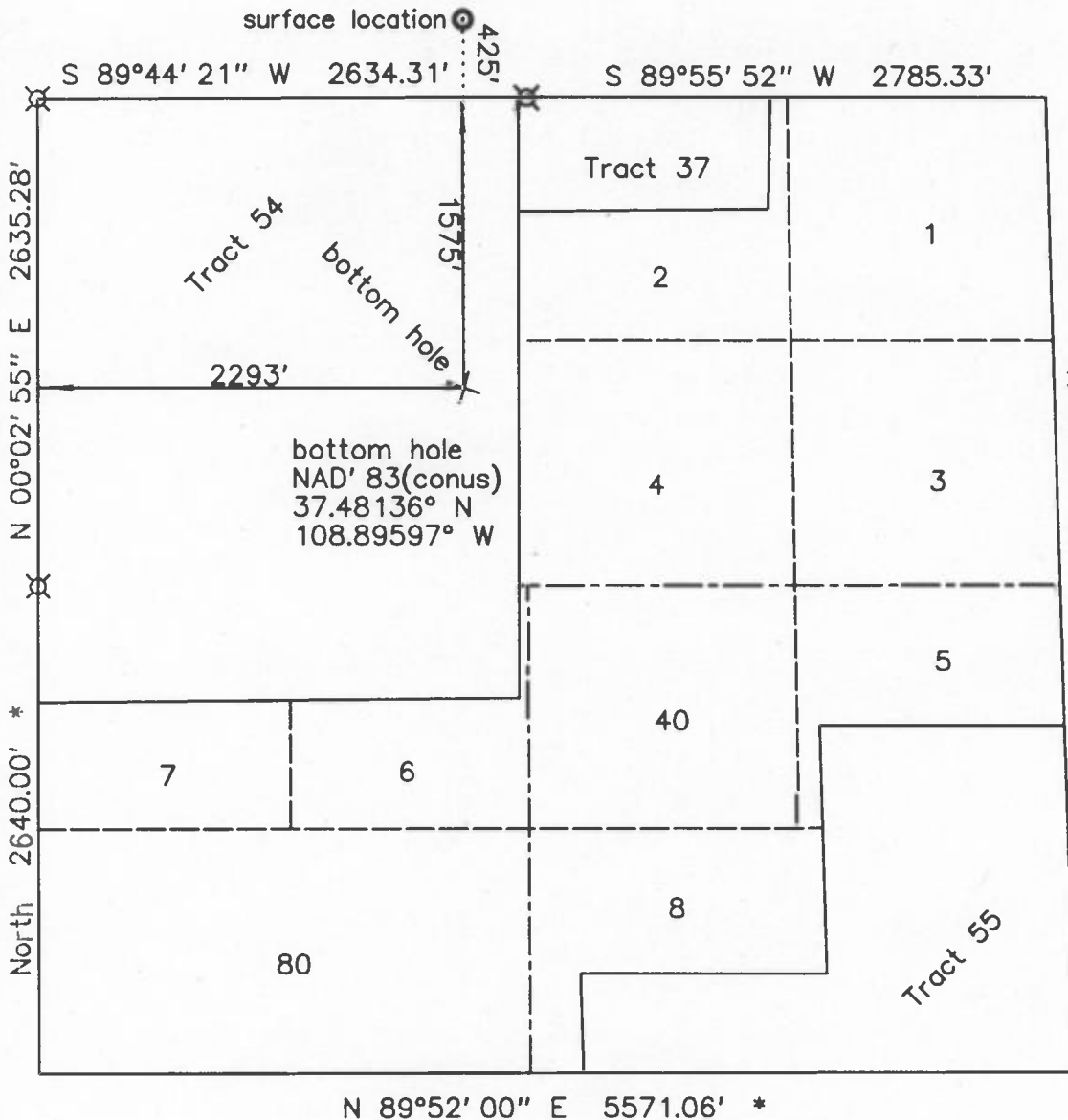
Notes:

- 1) Distances/dimensions are perpendicular to section/aliquot lines.
- 2) Surface use is Fee grazing/hunting.
- 3) GPS was corrected with OPUS, GPS operator was R.J. Caffey, CO LS 36562
- 4) There are no improvements within 500 feet, except a fence on property line at 282 feet and driveway at 272 feet.

date of survey : 10/18/2011  
& 05/07/2013  
date of plat : 05/16/2013  
revised: 05/30/2013

KNOW ALL MEN BY THESE PRESENTS that I, GERALD G. HUDDLESTON, do hereby certify that this plat was prepared from field notes of an actual survey made by me or under my supervision and that the same is true and accurate to the best of my knowledge and belief.





0' 1000'

Scale: 1" = 1000'

Basis of bearing is assumed from GPS True North as shown.

⌵ standard GLO/BLM monument

○ set standard monument

\* from GLO/BLM  
\*\* calculated

KINDER MORGAN CO2 COMPANY, LP  
HF - 4  
425' FSL & 2293' FWL - surface location  
6247.8' grd.el. NAVD '88 (from OPUS)  
Section 1, T.37 N., R.19 W., NMPM  
1575' FNL & 2293' FWL - bottom hole  
Section 12, T.37 N., R.19 W., NMPM  
Montezuma County, CO

Notes:

1) Distances/dimensions are perpendicular to section/aliquot lines.

date of survey : 10/18/2011  
& 05/07/2013  
date of plat : 05/16/2013  
revised: 05/30/2013

KNOW ALL MEN BY THESE PRESENTS that I, GERALD G. HUDDLESTON, do hereby certify that this plat was prepared from field notes of an actual survey made by me or under my supervision and that the same is true and accurate to the best of my knowledge and belief.

