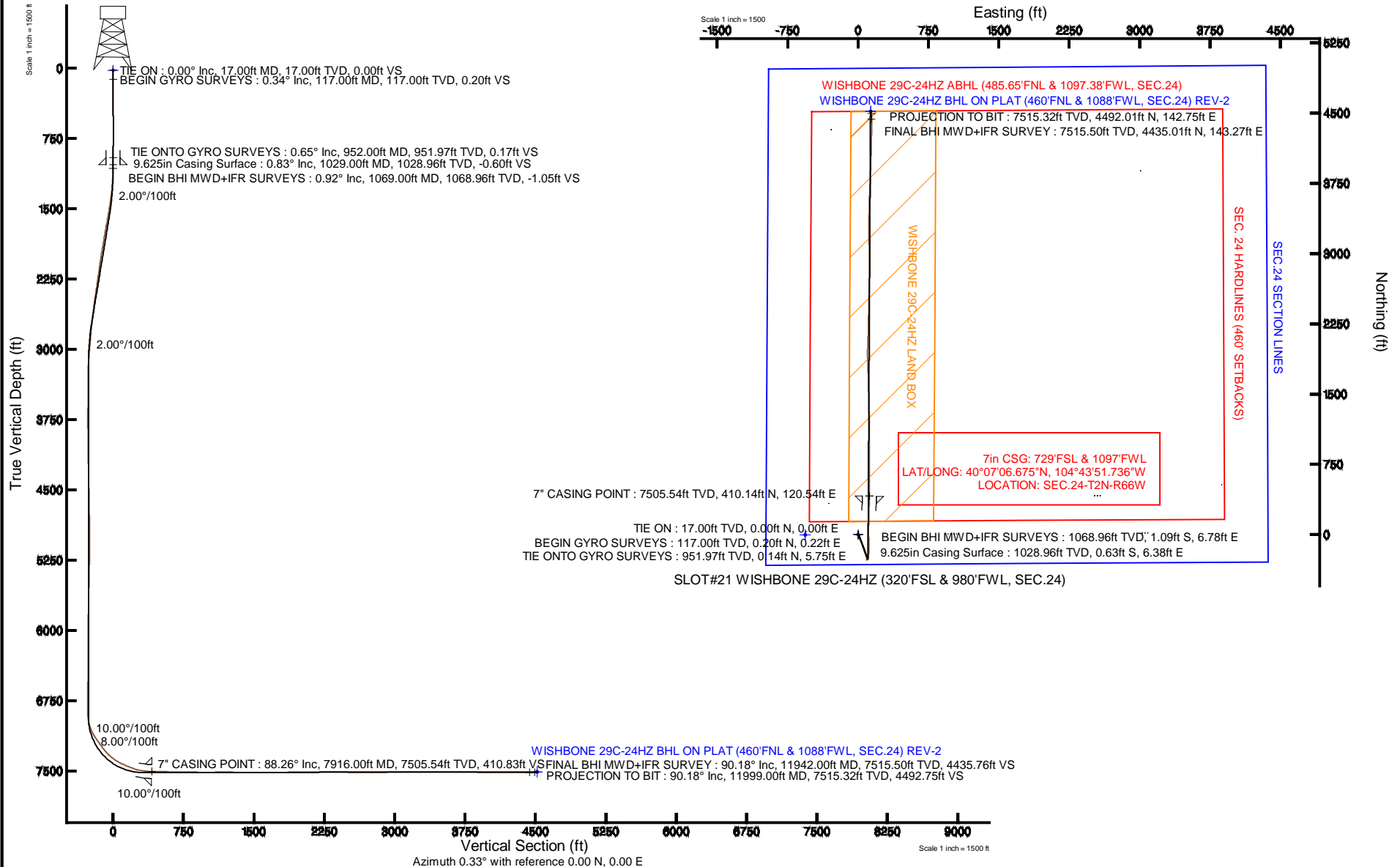


# KERR-MCGEE OIL & GAS ONSHORE LP

Location: COLORADO Slot: SLOT#21 WISHBONE 29C-24HZ (320'FSL & 980'FWL, SEC.24)  
Field: WELD COUNTY (KERR MCGEE) Well: WISHBONE 29C-24HZ  
Facility: SEC.24-T2N-R66W Wellbore: WISHBONE 29C-24HZ PWB

Plot reference wellpath is WISHBONE 29C-24HZ (REV-A.0) PWP

True vertical depths are referenced to XTREME 8 (RKB)	Grid System: NAD83 / Lambert Colorado SP, Northern Zone (501), US feet
Measured depths are referenced to XTREME 8 (RKB)	North Reference: True north
XTREME 8 (RKB) to Mean Sea Level: 5099 feet	Scale: True distance
Mean Sea Level to Mud line (At Slot: SLOT#21 WISHBONE 29C-24HZ (320'FSL & 980'FWL, SEC.24)): 0 feet	Depths are in feet
Coordinates are in feet referenced to Slot	Created by: robale01 on 10/Jul/2013





# Actual Wellpath Report

WISHBONE 29C-24HZ AWP

Page 1 of 6



REFERENCE WELLPATH IDENTIFICATION			
Operator	KERR-MCGEE OIL & GAS ONSHORE LP	Slot	SLOT#21 WISHBONE 29C-24HZ (320'FSL & 980'FWL, SEC.24)
Area	COLORADO	Well	WISHBONE 29C-24HZ
Field	WELD COUNTY (KERR MCGEE)	Wellbore	WISHBONE 29C-24HZ AWB
Facility	SEC.24-T2N-R66W		

REPORT SETUP INFORMATION			
Projection System	NAD83 / Lambert Colorado SP, Northern Zone (501), US feet	Software System	WellArchitect® 4.0.0
North Reference	True	User	Robiale01
Scale	0.99996	Report Generated	10/Jul/2013 at 15:39
Convergence at slot	n/a	Database/Source file	WA_ANADARKO/WISHBONE_29C-24HZ_AWB.xml

WELLPATH LOCATION						
	Local coordinates		Grid coordinates		Geographic coordinates	
	North[ft]	East[ft]	Easting[US ft]	Northing[US ft]	Latitude	Longitude
Slot Location	3.34	562.78	3214933.43	1286542.44	40°07'02.622"N	104°43'53.288"W
Facility Reference Pt			3214370.72	1286534.23	40°07'02.589"N	104°44'00.532"W
Field Reference Pt			3197771.84	1268891.29	40°04'09.600"N	104°47'36.000"W

WELLPATH DATUM			
Calculation method	Minimum curvature	XTREME 8 (RKB) to Facility Vertical Datum	5099.00ft
Horizontal Reference Pt	Slot	XTREME 8 (RKB) to Mean Sea Level	5099.00ft
Vertical Reference Pt	XTREME 8 (RKB)	XTREME 8 (RKB) to Mud Line at Slot (SLOT#21 WISHBONE 29C-24HZ (320'FSL & 980'FWL, SEC.24))	5099.00ft
MD Reference Pt	XTREME 8 (RKB)	Section Origin	N 0.00, E 0.00 ft
Field Vertical Reference	Mean Sea Level	Section Azimuth	0.33°



# Actual Wellpath Report

WISHBONE 29C-24HZ AWP

Page 2 of 6



## REFERENCE WELLPATH IDENTIFICATION

Operator	KERR-MCGEE OIL & GAS ONSHORE LP	Slot	SLOT#21 WISHBONE 29C-24HZ (320'FSL & 980'FWL, SEC.24)
Area	COLORADO	Well	WISHBONE 29C-24HZ
Field	WELD COUNTY (KERR MCGEE)	Wellbore	WISHBONE 29C-24HZ AWP
Facility	SEC.24-T2N-R66W		

## WELLPATH DATA (129 stations) † = interpolated/extrapolated station

MD [ft]	Inclination [°]	Azimuth [°]	TVD [ft]	Vert Sect [ft]	North [ft]	East [ft]	Latitude	Longitude	DLS [°/100ft]	Comments
0.00†	0.000	47.050	0.00	0.00	0.00	0.00	40°07'02.622"N	104°43'53.288"W	0.00	
17.00	0.000	47.050	17.00	0.00	0.00	0.00	40°07'02.622"N	104°43'53.288"W	0.00	TIE ON
117.00	0.340	47.050	117.00	0.20	0.20	0.22	40°07'02.624"N	104°43'53.285"W	0.34	BEGIN GYRO SURVEYS
217.00	0.260	74.830	217.00	0.47	0.46	0.65	40°07'02.627"N	104°43'53.280"W	0.16	
317.00	0.370	78.290	317.00	0.60	0.59	1.19	40°07'02.628"N	104°43'53.273"W	0.11	
417.00	0.310	54.120	416.99	0.82	0.81	1.72	40°07'02.630"N	104°43'53.266"W	0.15	
517.00	0.330	41.950	516.99	1.20	1.19	2.14	40°07'02.634"N	104°43'53.261"W	0.07	
617.00	0.460	67.590	616.99	1.57	1.55	2.70	40°07'02.637"N	104°43'53.253"W	0.22	
717.00	0.470	102.730	716.99	1.64	1.62	3.47	40°07'02.638"N	104°43'53.243"W	0.28	
817.00	0.670	119.580	816.98	1.26	1.24	4.38	40°07'02.634"N	104°43'53.232"W	0.26	
917.00	0.840	131.320	916.97	0.49	0.46	5.44	40°07'02.627"N	104°43'53.218"W	0.23	
952.00	0.650	142.540	951.97	0.17	0.14	5.75	40°07'02.623"N	104°43'53.214"W	0.68	TIE ONTO GYRO SURVEYS
1069.00	0.920	138.270	1068.96	-1.05	-1.09	6.78	40°07'02.611"N	104°43'53.201"W	0.24	BEGIN BHI MWD+IFR SURVEYS
1160.00	2.650	173.810	1159.91	-3.68	-3.73	7.49	40°07'02.585"N	104°43'53.192"W	2.17	
1251.00	4.210	166.580	1250.75	-9.02	-9.07	8.50	40°07'02.532"N	104°43'53.179"W	1.78	
1342.00	6.700	166.480	1341.33	-17.42	-17.48	10.51	40°07'02.449"N	104°43'53.153"W	2.74	
1432.00	8.880	164.070	1430.49	-29.19	-29.27	13.65	40°07'02.333"N	104°43'53.112"W	2.45	
1523.00	10.670	157.740	1520.17	-43.71	-43.82	18.77	40°07'02.189"N	104°43'53.046"W	2.29	
1614.00	10.780	157.480	1609.58	-59.33	-59.48	25.22	40°07'02.034"N	104°43'52.963"W	0.13	
1705.00	11.420	158.970	1698.88	-75.56	-75.75	31.71	40°07'01.873"N	104°43'52.880"W	0.77	
1795.00	10.290	154.890	1787.27	-91.12	-91.34	38.32	40°07'01.719"N	104°43'52.795"W	1.52	
1886.00	9.990	161.210	1876.85	-105.92	-106.18	44.31	40°07'01.573"N	104°43'52.718"W	1.27	
1977.00	9.970	161.250	1966.47	-120.82	-121.11	49.38	40°07'01.425"N	104°43'52.652"W	0.02	
2068.00	8.750	160.780	2056.26	-134.79	-135.10	54.20	40°07'01.287"N	104°43'52.590"W	1.34	
2158.00	8.690	163.130	2145.22	-147.74	-148.07	58.42	40°07'01.159"N	104°43'52.536"W	0.40	
2249.00	8.780	163.290	2235.17	-160.94	-161.30	62.41	40°07'01.028"N	104°43'52.485"W	0.10	
2310.00	8.530	163.840	2295.47	-169.73	-170.11	65.01	40°07'00.941"N	104°43'52.451"W	0.43	
2400.00	9.180	159.810	2384.40	-182.86	-183.26	69.35	40°07'00.811"N	104°43'52.395"W	1.00	
2491.00	8.370	158.830	2474.33	-195.82	-196.25	74.24	40°07'00.683"N	104°43'52.332"W	0.91	
2582.00	7.730	158.290	2564.44	-207.65	-208.11	78.90	40°07'00.565"N	104°43'52.272"W	0.71	
2673.00	7.320	159.190	2654.65	-218.73	-219.21	83.22	40°07'00.456"N	104°43'52.217"W	0.47	
2763.00	6.580	159.450	2743.99	-228.90	-229.40	87.07	40°07'00.355"N	104°43'52.167"W	0.82	
2854.00	5.640	158.780	2834.47	-237.93	-238.45	90.52	40°07'00.266"N	104°43'52.123"W	1.04	
2939.00	4.940	159.550	2919.11	-245.24	-245.78	93.31	40°07'00.193"N	104°43'52.087"W	0.83	
3025.00	4.630	164.420	3004.81	-252.04	-252.59	95.54	40°07'00.126"N	104°43'52.058"W	0.59	
3110.00	4.260	163.740	3089.55	-258.36	-258.92	97.34	40°07'00.063"N	104°43'52.035"W	0.44	
3195.00	2.870	174.180	3174.39	-263.50	-264.07	98.44	40°07'00.012"N	104°43'52.021"W	1.80	
3280.00	1.400	181.040	3259.33	-266.66	-267.23	98.64	40°06'59.981"N	104°43'52.018"W	1.75	
3366.00	0.400	350.920	3345.32	-267.41	-267.98	98.57	40°06'59.974"N	104°43'52.019"W	2.09	
3451.00	0.460	159.120	3430.32	-267.44	-268.01	98.65	40°06'59.974"N	104°43'52.018"W	1.01	
3792.00	0.390	272.790	3771.31	-268.66	-269.23	97.97	40°06'59.961"N	104°43'52.027"W	0.21	
4133.00	1.040	353.520	4112.29	-265.54	-266.10	96.47	40°06'59.992"N	104°43'52.046"W	0.31	
4474.00	1.440	39.120	4453.22	-259.13	-259.70	98.82	40°07'00.056"N	104°43'52.016"W	0.30	
4815.00	1.010	25.700	4794.14	-253.07	-253.67	102.83	40°07'00.115"N	104°43'51.964"W	0.15	
5156.00	1.380	270.160	5135.10	-250.37	-250.95	100.02	40°07'00.142"N	104°43'52.001"W	0.60	



# Actual Wellpath Report

WISHBONE 29C-24HZ AWP

Page 3 of 6



## REFERENCE WELLPATH IDENTIFICATION

Operator	KERR-MCGEE OIL & GAS ONSHORE LP	Slot	SLOT#21 WISHBONE 29C-24HZ (320'FSL & 980'FWL, SEC.24)
Area	COLORADO	Well	WISHBONE 29C-24HZ
Field	WELD COUNTY (KERR MCGEE)	Wellbore	WISHBONE 29C-24HZ AWP
Facility	SEC.24-T2N-R66W		

## WELLPATH DATA (129 stations) † = interpolated/extrapolated station

MD [ft]	Inclination [°]	Azimuth [°]	TVD [ft]	Vert Sect [ft]	North [ft]	East [ft]	Latitude	Longitude	DLS [°/100ft]	Comments
5242.00	1.430	202.970	5221.08	-251.36	-251.93	98.57	40°07'00.132"N	104°43'52.019"W	1.81	
5327.00	1.900	203.990	5306.04	-253.63	-254.20	97.58	40°07'00.110"N	104°43'52.032"W	0.55	
5412.00	1.100	193.420	5391.01	-255.72	-256.28	96.82	40°07'00.089"N	104°43'52.042"W	0.99	
5753.00	1.440	220.320	5731.93	-262.19	-262.73	93.29	40°07'00.026"N	104°43'52.087"W	0.20	
5838.00	0.550	162.830	5816.92	-263.40	-263.93	92.72	40°07'00.014"N	104°43'52.095"W	1.45	
6009.00	0.680	209.890	5987.91	-265.06	-265.60	92.45	40°07'00.000"N	104°43'52.098"W	0.30	
6094.00	0.870	126.290	6072.91	-265.88	-266.42	92.72	40°06'59.989"N	104°43'52.095"W	1.23	
6265.00	1.060	100.950	6243.88	-266.93	-267.48	95.32	40°06'59.979"N	104°43'52.061"W	0.27	
6606.00	0.800	123.820	6584.84	-268.83	-269.41	100.40	40°06'59.960"N	104°43'51.996"W	0.13	
6776.00	0.370	149.660	6754.83	-269.95	-270.54	101.66	40°06'59.948"N	104°43'51.979"W	0.29	
6862.00	0.350	154.330	6840.83	-270.43	-271.02	101.91	40°06'59.944"N	104°43'51.976"W	0.04	
6904.00	1.160	22.650	6882.83	-270.15	-270.74	102.13	40°06'59.946"N	104°43'51.973"W	3.37	
6947.00	5.560	6.720	6925.74	-267.68	-268.27	102.55	40°06'59.971"N	104°43'51.968"W	10.36	
6990.00	11.030	9.780	6968.28	-261.54	-262.14	103.49	40°07'00.031"N	104°43'51.956"W	12.76	
7032.00	15.870	12.460	7009.11	-251.96	-252.57	105.41	40°07'00.126"N	104°43'51.931"W	11.62	
7075.00	21.610	13.840	7049.82	-238.50	-239.13	108.58	40°07'00.259"N	104°43'51.890"W	13.39	
7118.00	25.890	7.360	7089.17	-221.48	-222.12	111.68	40°07'00.427"N	104°43'51.851"W	11.64	
7160.00	31.840	2.460	7125.94	-201.28	-201.94	113.33	40°07'00.626"N	104°43'51.829"W	15.23	
7203.00	34.880	1.970	7161.85	-177.65	-178.31	114.24	40°07'00.860"N	104°43'51.818"W	7.10	
7246.00	36.300	1.800	7196.82	-152.64	-153.30	115.06	40°07'01.107"N	104°43'51.807"W	3.31	
7288.00	36.120	1.130	7230.71	-127.83	-128.50	115.69	40°07'01.352"N	104°43'51.799"W	1.04	
7331.00	38.030	358.690	7265.02	-101.92	-102.58	115.64	40°07'01.608"N	104°43'51.800"W	5.61	
7374.00	41.460	357.840	7298.07	-74.45	-75.11	114.80	40°07'01.880"N	104°43'51.810"W	8.08	
7416.00	45.740	358.190	7328.48	-45.51	-46.17	113.80	40°07'02.166"N	104°43'51.823"W	10.21	
7459.00	50.640	358.670	7357.14	-13.49	-14.14	112.93	40°07'02.482"N	104°43'51.834"W	11.43	
7501.00	56.920	359.910	7381.94	20.37	19.73	112.52	40°07'02.817"N	104°43'51.840"W	15.14	
7544.00	61.090	0.570	7404.08	57.22	56.58	112.68	40°07'03.181"N	104°43'51.838"W	9.79	
7587.00	63.690	0.630	7424.01	95.32	94.68	113.08	40°07'03.558"N	104°43'51.832"W	6.05	
7629.00	65.530	1.050	7442.02	133.26	132.61	113.64	40°07'03.932"N	104°43'51.825"W	4.47	
7672.00	68.840	1.380	7458.69	172.89	172.23	114.48	40°07'04.324"N	104°43'51.814"W	7.73	
7715.00	71.930	1.260	7473.12	213.38	212.72	115.41	40°07'04.724"N	104°43'51.802"W	7.19	
7757.00	75.270	1.420	7484.98	253.66	253.00	116.36	40°07'05.122"N	104°43'51.790"W	7.96	
7800.00	78.560	2.360	7494.71	295.52	294.85	117.74	40°07'05.536"N	104°43'51.772"W	7.94	
7842.00	83.510	1.620	7501.26	336.98	336.30	119.18	40°07'05.945"N	104°43'51.754"W	11.91	
7878.00	87.410	0.980	7504.11	372.85	372.17	119.99	40°07'06.300"N	104°43'51.743"W	10.98	
7916.00†	88.260	0.684	7505.54	410.83	410.14	120.54	40°07'06.675"N	104°43'51.736"W	2.37	7" CASING POINT
7950.00	89.020	0.420	7506.35	444.82	444.13	120.87	40°07'07.011"N	104°43'51.732"W	2.37	
7992.00	88.920	0.620	7507.10	486.81	486.12	121.25	40°07'07.426"N	104°43'51.727"W	0.53	
8078.00	89.020	0.640	7508.65	572.79	572.10	122.20	40°07'08.276"N	104°43'51.715"W	0.12	
8163.00	88.890	0.090	7510.20	657.78	657.08	122.74	40°07'09.115"N	104°43'51.708"W	0.66	
8248.00	88.890	359.960	7511.85	742.76	742.07	122.78	40°07'09.955"N	104°43'51.708"W	0.15	
8334.00	89.380	359.250	7513.14	828.74	828.06	122.18	40°07'10.805"N	104°43'51.715"W	1.00	
8419.00	89.450	359.530	7514.01	913.73	913.05	121.28	40°07'11.645"N	104°43'51.727"W	0.34	
8504.00	89.930	359.050	7514.47	998.71	998.04	120.22	40°07'12.485"N	104°43'51.740"W	0.80	
8589.00	90.790	359.890	7513.94	1083.70	1083.03	119.44	40°07'13.325"N	104°43'51.751"W	1.41	



# Actual Wellpath Report

WISHBONE 29C-24HZ AWP

Page 4 of 6



## REFERENCE WELLPATH IDENTIFICATION

Operator	KERR-MCGEE OIL & GAS ONSHORE LP	Slot	SLOT#21 WISHBONE 29C-24HZ (320'FSL & 980'FWL, SEC.24)
Area	COLORADO	Well	WISHBONE 29C-24HZ
Field	WELD COUNTY (KERR MCGEE)	Wellbore	WISHBONE 29C-24HZ AWP
Facility	SEC.24-T2N-R66W		

## WELLPATH DATA (129 stations)

MD [ft]	Inclination [°]	Azimuth [°]	TVD [ft]	Vert Sect [ft]	North [ft]	East [ft]	Latitude	Longitude	DLS [°/100ft]	Comments
8675.00	89.780	359.470	7513.51	1169.69	1169.03	118.96	40°07'14.174"N	104°43'51.757"W	1.27	
8760.00	89.810	359.960	7513.81	1254.69	1254.03	118.54	40°07'15.014"N	104°43'51.762"W	0.58	
8845.00	89.910	358.580	7514.02	1339.67	1339.02	117.45	40°07'15.854"N	104°43'51.776"W	1.63	
8930.00	89.880	358.650	7514.18	1424.63	1423.99	115.40	40°07'16.694"N	104°43'51.803"W	0.09	
9016.00	89.930	358.840	7514.32	1510.60	1509.97	113.51	40°07'17.544"N	104°43'51.827"W	0.23	
9101.00	89.900	358.790	7514.45	1595.57	1594.95	111.76	40°07'18.384"N	104°43'51.849"W	0.07	
9186.00	90.120	358.280	7514.43	1680.53	1679.92	109.58	40°07'19.223"N	104°43'51.877"W	0.65	
9272.00	90.300	357.850	7514.12	1766.46	1765.87	106.68	40°07'20.073"N	104°43'51.915"W	0.54	
9357.00	90.000	358.240	7513.89	1851.39	1850.82	103.78	40°07'20.912"N	104°43'51.952"W	0.58	
9527.00	90.640	2.290	7512.94	2021.35	2020.78	104.57	40°07'22.592"N	104°43'51.942"W	2.41	
9613.00	90.090	1.950	7512.40	2107.31	2106.72	107.75	40°07'23.441"N	104°43'51.901"W	0.75	
9698.00	90.430	1.010	7512.01	2192.29	2191.69	109.94	40°07'24.281"N	104°43'51.873"W	1.18	
9783.00	89.410	1.160	7512.13	2277.28	2276.68	111.55	40°07'25.120"N	104°43'51.852"W	1.21	
9868.00	89.560	1.740	7512.89	2362.26	2361.65	113.70	40°07'25.960"N	104°43'51.824"W	0.70	
9954.00	89.660	0.920	7513.48	2448.24	2447.62	115.70	40°07'26.810"N	104°43'51.799"W	0.96	
10039.00	89.190	1.510	7514.33	2533.23	2532.60	117.50	40°07'27.649"N	104°43'51.775"W	0.89	
10124.00	89.870	1.170	7515.03	2618.21	2617.57	119.49	40°07'28.489"N	104°43'51.750"W	0.89	
10210.00	89.130	0.230	7515.78	2704.20	2703.56	120.54	40°07'29.339"N	104°43'51.736"W	1.39	
10295.00	90.730	0.300	7515.88	2789.20	2788.55	120.93	40°07'30.179"N	104°43'51.731"W	1.88	
10380.00	90.950	0.150	7514.64	2874.19	2873.54	121.27	40°07'31.019"N	104°43'51.727"W	0.31	
10465.00	91.070	359.390	7513.14	2959.17	2958.53	120.93	40°07'31.859"N	104°43'51.731"W	0.91	
10550.00	91.230	358.680	7511.43	3044.14	3043.50	119.49	40°07'32.698"N	104°43'51.750"W	0.86	
10636.00	90.550	358.680	7510.10	3130.09	3129.47	117.51	40°07'33.548"N	104°43'51.775"W	0.79	
10721.00	89.870	359.720	7509.79	3215.07	3214.46	116.33	40°07'34.388"N	104°43'51.790"W	1.46	
10806.00	89.160	0.730	7510.50	3300.07	3299.45	116.66	40°07'35.228"N	104°43'51.786"W	1.45	
10891.00	89.750	0.530	7511.31	3385.06	3384.44	117.59	40°07'36.067"N	104°43'51.774"W	0.73	
10977.00	89.410	1.710	7511.94	3471.05	3470.42	119.28	40°07'36.917"N	104°43'51.753"W	1.43	
11062.00	89.560	1.440	7512.71	3556.02	3555.38	121.61	40°07'37.757"N	104°43'51.722"W	0.36	
11147.00	90.120	1.640	7512.95	3641.00	3640.35	123.90	40°07'38.596"N	104°43'51.693"W	0.70	
11232.00	89.590	2.630	7513.16	3725.96	3725.29	127.06	40°07'39.436"N	104°43'51.652"W	1.32	
11318.00	89.970	2.270	7513.49	3811.90	3811.21	130.74	40°07'40.285"N	104°43'51.605"W	0.61	
11403.00	89.290	1.980	7514.04	3896.86	3896.15	133.89	40°07'41.124"N	104°43'51.564"W	0.87	
11488.00	89.540	1.820	7514.91	3981.82	3981.10	136.71	40°07'41.964"N	104°43'51.528"W	0.35	
11574.00	89.380	1.150	7515.72	4067.80	4067.07	138.94	40°07'42.813"N	104°43'51.499"W	0.80	
11659.00	89.970	1.500	7516.20	4152.78	4152.04	140.90	40°07'43.653"N	104°43'51.474"W	0.81	
11744.00	90.800	0.980	7515.63	4237.77	4237.02	142.74	40°07'44.493"N	104°43'51.450"W	1.15	
11829.00	89.630	0.180	7515.31	4322.77	4322.01	143.60	40°07'45.333"N	104°43'51.439"W	1.67	
11942.00	90.180	359.480	7515.50	4435.76	4435.01	143.27	40°07'46.449"N	104°43'51.444"W	0.79	FINAL BHI MWD+IFR SURVEY
11999.00	90.180	359.480	7515.32	4492.75	4492.01	142.75	40°07'47.013"N	104°43'51.450"W	0.00	PROJECTION TO BIT



# Actual Wellpath Report

WISHBONE 29C-24HZ AWP

Page 5 of 6



## REFERENCE WELLPATH IDENTIFICATION

Operator	KERR-MCGEE OIL & GAS ONSHORE LP	Slot	SLOT#21 WISHBONE 29C-24HZ (320'FSL & 980'FWL, SEC.24)
Area	COLORADO	Well	WISHBONE 29C-24HZ
Field	WELD COUNTY (KERR MCGEE)	Wellbore	WISHBONE 29C-24HZ AWB
Facility	SEC.24-T2N-R66W		

## HOLE & CASING SECTIONS - Ref Wellbore: WISHBONE 29C-24HZ AWB Ref Wellpath: WISHBONE 29C-24HZ AWP

String/Diameter	Start MD [ft]	End MD [ft]	Interval [ft]	Start TVD [ft]	End TVD [ft]	Start N/S [ft]	Start E/W [ft]	End N/S [ft]	End E/W [ft]
13.5in Open Hole	17.00	1029.00	1012.00	17.00	1028.96	0.00	0.00	-0.63	6.38
9.625in Casing Surface	17.00	1029.00	1012.00	17.00	1028.96	0.00	0.00	-0.63	6.38
8.75in Open Hole	1029.00	7927.00	6898.00	1028.96	7505.85	-0.63	6.38	421.13	120.67
7in Casing Intermediate	17.00	7916.00	7899.00	17.00	7505.54	0.00	0.00	410.14	120.54
6.125in Open Hole	7927.00	11999.00	4072.00	7505.85	7515.32	421.13	120.67	4492.01	142.75

## TARGETS

Name	MD [ft]	TVD [ft]	North [ft]	East [ft]	Grid East [US ft]	Grid North [US ft]	Latitude	Longitude	Shape
SEC.24 SECTION LINES		22.00	-3.23	-562.78	3214370.72	1286534.33	40°07'02.590"N	104°44'00.532"W	polygon
WISHBONE 29C-24HZ LAND BOX		22.00	0.00	0.00	3214933.43	1286542.44	40°07'02.622"N	104°43'53.288"W	polygon
WISHBONE 29C-24HZ BHL ON PLAT (460'FNL & 1088'FWL, SEC.24)		7509.00	4517.66	133.37	3215027.64	1291060.89	40°07'47.266"N	104°43'51.571"W	point
WISHBONE 29C-24HZ BHL ON PLAT (460'FNL & 1088'FWL, SEC.24) REV-2		7510.00	4517.66	133.37	3215027.64	1291060.89	40°07'47.266"N	104°43'51.571"W	point
SEC. 24 HARDLINES (460' SETBACKS)		7622.00	-3.23	-562.78	3214370.72	1286534.33	40°07'02.590"N	104°44'00.532"W	polygon

## WELLPATH COMPOSITION - Ref Wellbore: WISHBONE 29C-24HZ AWB Ref Wellpath: WISHBONE 29C-24HZ AWP

Start MD [ft]	End MD [ft]	Positional Uncertainty Model	Log Name/Comment	Wellbore
17.00	952.00	Generic gyro - continuous (Standard)	WISHBONE 29C-24HZ MS WIRELINE GYRO SURVEYS <117-952>	WISHBONE 29C-24HZ AWB
952.00	7878.00	NaviTrak (MAGCORR,IFR)	BHI NAVITRAK MWD+IFR 8.75" HOLE <1069-7878>	WISHBONE 29C-24HZ AWB
7878.00	11942.00	OnTrak (MAGCORR,IFR)	BHI ONTRAK MWD+IFR 6" <7950-11942>	WISHBONE 29C-24HZ AWB
11942.00	11999.00	Blind Drilling (std)	Projection to bit	WISHBONE 29C-24HZ AWB





# Actual Wellpath Report

WISHBONE 29C-24HZ AWP

Page 6 of 6



REFERENCE WELLPATH IDENTIFICATION				
Operator	KERR-MCGEE OIL & GAS ONSHORE LP	Slot	SLOT#21 WISHBONE 29C-24HZ (320'FSL & 980'FWL, SEC.24)	
Area	COLORADO	Well	WISHBONE 29C-24HZ	
Field	WELD COUNTY (KERR MCGEE)	Wellbore	WISHBONE 29C-24HZ AWB	
Facility	SEC.24-T2N-R66W			

WELLPATH COMMENTS				
MD [ft]	Inclination [°]	Azimuth [°]	TVD [ft]	Comment
17.00	0.000	47.050	17.00	TIE ON
117.00	0.340	47.050	117.00	BEGIN GYRO SURVEYS
952.00	0.650	142.540	951.97	TIE ONTO GYRO SURVEYS
1069.00	0.920	138.270	1068.96	BEGIN BHI MWD+IFR SURVEYS
7916.00	88.260	0.684	7505.54	7" CASING POINT
11942.00	90.180	359.480	7515.50	FINAL BHI MWD+IFR SURVEY
11999.00	90.180	359.480	7515.32	PROJECTION TO BIT