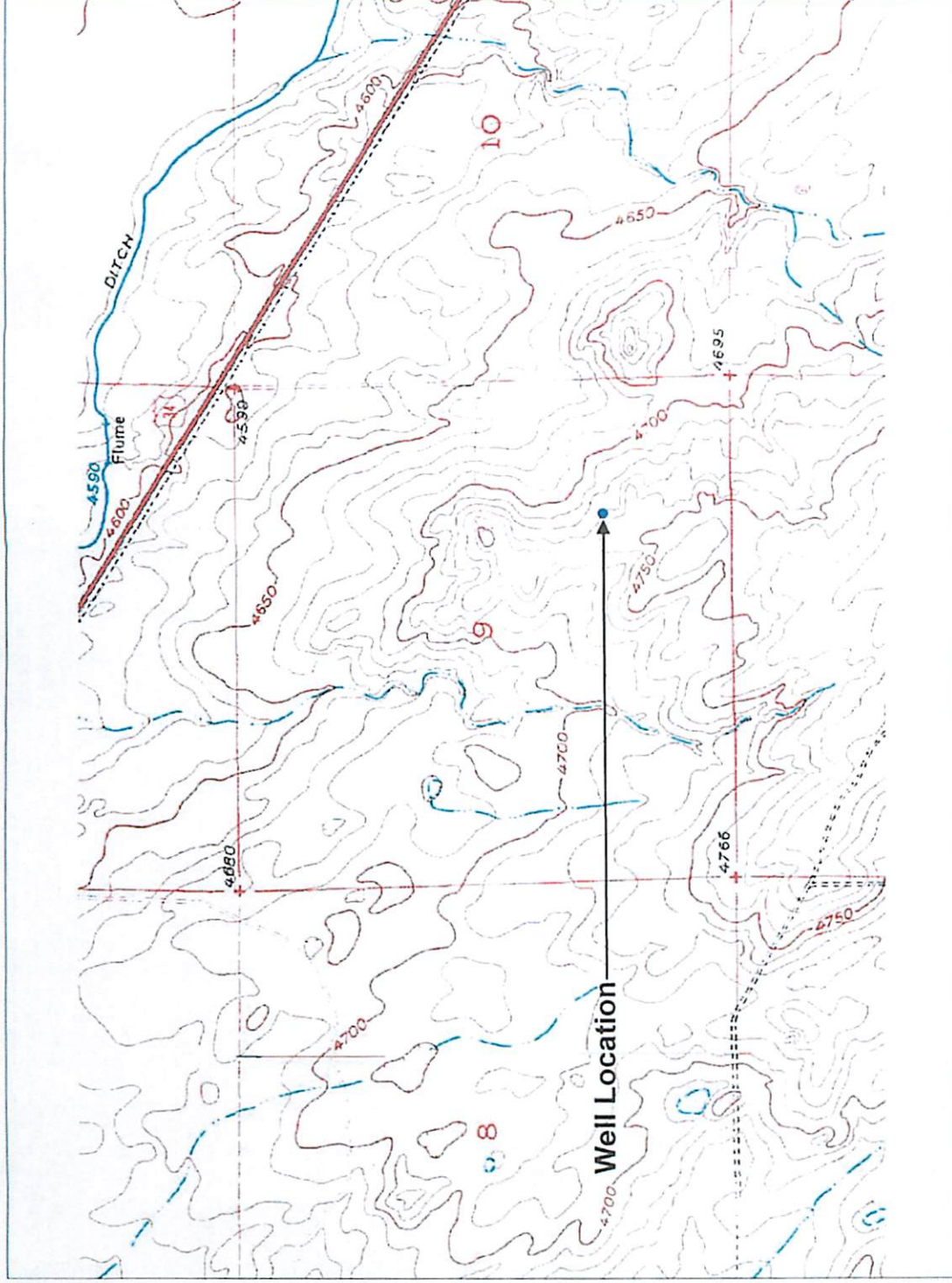


Bonanza Creek Energy Operating Company LLC As Built Well Location GPS Data (NAD 83)

Operator	Well Name	API Number	Date	PDOP	Lat DMS	Long DMS	Lat DD	Long DD
Bonanza Creek Energy Operating Co.	Antelope 14-19	05-123-30512	07-01-10	2.2	N40°22'45.5"	W104°22'20.8"	40.37931	-104.37244
Bonanza Creek Energy Operating Co.	Antelope 13-19	05-123-30511	07-01-10	2.3	N40°22'58.5"	W104°22'20.9"	40.38292	-104.37247
Bonanza Creek Energy Operating Co.	Antelope 43-19	05-123-30510	07-01-10	2.1	N40°22'59.1"	W104°21'32.8"	40.38308	-104.35911
Bonanza Creek Energy Operating Co.	Antelope 42-19	05-123-30509	07-01-10	2.1	N40°23'12.3"	W104°21'32.4"	40.38675	-104.35900
Bonanza Creek Energy Operating Co.	Antelope 34-18	05-123-30517	07-01-10	2.4	N40°23'38.0"	W104°21'49.2"	40.39389	-104.36367
Bonanza Creek Energy Operating Co.	Guttersen Ranch 9I	05-123-30740	07-01-10	2.3	N40°19'22.8"	W104°26'18.7"	40.32300	-104.43853

Guttersen Ranch #9I As Built Well Location SE/4 Section 9 T4N R63W



Section View

Latitude: 40.32300
Longitude: -104.43853
PDOP: 2.3
GPS Date: 07-01-2010
GPS Operator: L. Robbins