

T6N, R61W, 6th. P.M.

BILL BARRETT CORPORATION

2006 Alum. Cap,
1.0' High
Lat: 40.480669°
Long: 104.261517°

2007 Private Alum.
Cap, 0.3' Below Ground,
LS #28285
Lat: 40.480725°
Long: 104.252461°

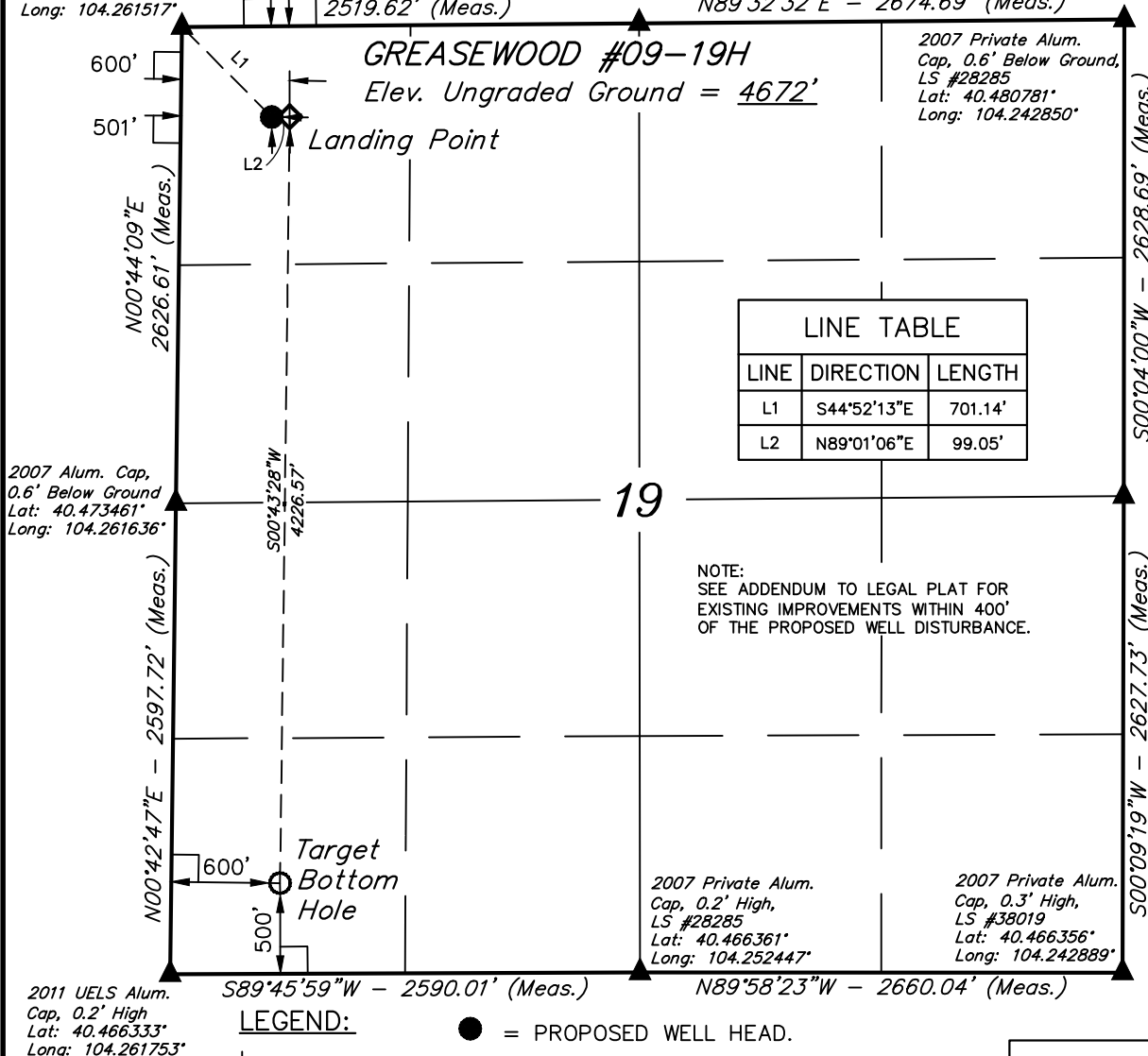
Well location, GREASEWOOD #09-19H, located as shown in the NW 1/4 NW 1/4 of Section 19, T6N, R61, 6th. P.M., Weld County, Colorado.

BASIS OF ELEVATION

SPOT ELEVATION LOCATED AT THE NORTHEAST CORNER OF SECTION 24, T5N, R61W, 6th. P.M. TAKEN FROM THE POINT OF ROCKS, QUADRANGLE, COLORADO, WELD COUNTY, 7.5 MINUTE QUAD (TOPOGRAPHIC MAP) PUBLISHED BY THE UNITED STATES DEPARTMENT OF THE INTERIOR, GEOLOGICAL SURVEY. SAID ELEVATION IS MARKED AS BEING 4530 FEET.

BASIS OF BEARINGS

BASIS OF BEARINGS IS A G.P.S. OBSERVATION.



2007 Private Alum.
Cap, Flush W/Ground,
LS #28285
Lat: 40.473567°
Long: 104.242861°



SCALE

CERTIFICATE

THIS IS TO CERTIFY THAT THE ABOVE PLAT WAS PREPARED FROM FIELD NOTES OF ACTUAL SURVEYS MADE BY ME OR UNDER MY SUPERVISION AND THAT THE SAME ARE TRUE AND CORRECT TO THE BEST OF MY KNOWLEDGE AND BELIEF.

Paul L. Barrett
REGISTERED LAND SURVEYOR
REGISTRATION NO. 17492
STATE OF COLORADO

REV.: 07-30-13 B.D.H.
REV.: 10-10-12 B.D.H.
REV.: 09-10-12 B.D.H.
REV.: 09-04-12 B.D.H.

UINTAH ENGINEERING & LAND SURVEYING
85 SOUTH 200 EAST - VERNAL, UTAH 84078
(435) 789-1017

NAD 83 (TARGET BOTTOM HOLE)	NAD 83 (LANDING POINT)	NAD 83 (SURFACE LOCATION)
LATITUDE = 40°28'03.76" (40.467711)	LATITUDE = 40°28'45.51" (40.479308)	LATITUDE = 40°28'45.50" (40.479306)
LONGITUDE = 104°15'34.47" (104.2559575)	LONGITUDE = 104°15'33.78" (104.259383)	LONGITUDE = 104°15'35.06" (104.259739)
NAD 27 (TARGET BOTTOM HOLE)	NAD 27 (LANDING POINT)	NAD 27 (SURFACE LOCATION)
LATITUDE = 40°28'03.82" (40.467728)	LATITUDE = 40°28'45.58" (40.479328)	LATITUDE = 40°28'45.56" (40.479322)
LONGITUDE = 104°15'32.65" (104.259069)	LONGITUDE = 104°15'31.96" (104.258878)	LONGITUDE = 104°15'33.24" (104.259233)
STATE PLANE NAD 83 COLORADO NORTH	STATE PLANE NAD 83 COLORADO NORTH	STATE PLANE NAD 83 COLORADO NORTH
N: 1415641.58 E: 3345114.95	N: 1419867.06 E: 3345109.38	N: 1419864.22 E: 3345010.23
STATE PLANE NAD 27 COLORADO NORTH	STATE PLANE NAD 27 COLORADO NORTH	STATE PLANE NAD 27 COLORADO NORTH
N: 415642.45 E: 2345264.70	N: 419867.82 E: 2345259.10	N: 419864.98 E: 2345159.94

SCALE 1" = 1000'	DATE SURVEYED: 02-03-11	DATE DRAWN: 02-10-11
PARTY G.M. J.R. J.I.	REFERENCES G.L.O. PLAT	
WEATHER COOL	FILE BILL BARRETT CORPORATION	