



V.D.L. C.C.L. GAMMA RAY
SECTOR BOND LONG

Pioneer Energy Services

Company ENCANA OIL AND GAS
Well IONE 1A-8H
Field WATTENBERG
County WELD State COLORADO

Location: API # : 05-123-35883-0000 Other Services

SHL: 228' FNL & 1226' FEL

SEC 8 TWP 2N RGE 66W

Permanent Datum GL Elevation 4887'
Log Measured From KB
Drilling Measured From KB

K.B. 4900'
D.F. 4899'
G.L. 4887'

Date NOVEMBER 28, 2012

Run Number ONE
Depth Driller 11.782'
Depth Logger 7342'
Bottom Logged Interval 7330'
Top Log Interval 26'
Open Hole Size NA
Type Fluid DRILL MUD
Density / Viscosity 10 LB
Max. Recorded Temp. NA
Estimated Cement Top NA
Time Well Ready NA
Time Logger on Bottom NA
Equipment Number ONE
Location FORT MORGAN
Recorded By RANDY AZEVEDO
Witnessed By CODY HUSEBY

Borehole Record
Run Number Bit From To Size Weight From To

Casing Record
Surface String Size Wgt/Ft Top Bottom
Prot. String 7"
Production String
Liner

<<< Fold Here >>>

All interpretations are opinions based on inferences from electrical or other measurements and we cannot and do not guarantee the accuracy or correctness of any interpretation, and we shall not, except in the case of gross or willful negligence on our part, be liable or responsible for any loss, costs, damages, or expenses incurred or sustained by anyone resulting from any interpretation made by any of our officers, agents or employees. These interpretations are also subject to our general terms and conditions set out in our current Price Schedule.

Comments

LOG MEASURED OFF KB
SO # 2-203341
THANK YOU FOR USING PIONEER ENERGY SERVICES.

Sensor	Offset (ft)	Schematic	Description	Len (ft)	OD (in)	Wt (lb)

Tool Name	Start Depth (ft)	End Depth (ft)	Length (ft)	Weight (lb)	O.D. (in)
PTS275	11.50	10.42	1.08	2.83	2.75
WVFCAL	11.50	11.50	0.00	8.92	2.75
WVFS1	11.50	11.50	0.00	8.92	2.75
WVFS2	11.50	11.50	0.00	8.92	2.75
WVFS3	11.50	11.50	0.00	8.92	2.75
WVFS4	11.50	11.50	0.00	8.92	2.75
WVFS5	11.50	11.50	0.00	8.92	2.75
WVFS6	11.50	11.50	0.00	8.92	2.75
WVFS7	11.50	11.50	0.00	8.92	2.75
WVFS8	11.50	11.50	0.00	8.92	2.75
WVF5FT	10.42	10.42	0.00	8.92	2.75
PTS275	10.42	10.42	0.00	2.83	2.75
CCL	10.42	10.42	0.00	2.83	2.75
GR	10.42	10.42	0.00	4.33	2.75

Dataset: ione 1a-8h cbl.db: field/well/run1/pass4

Total Length: 18.92 ft

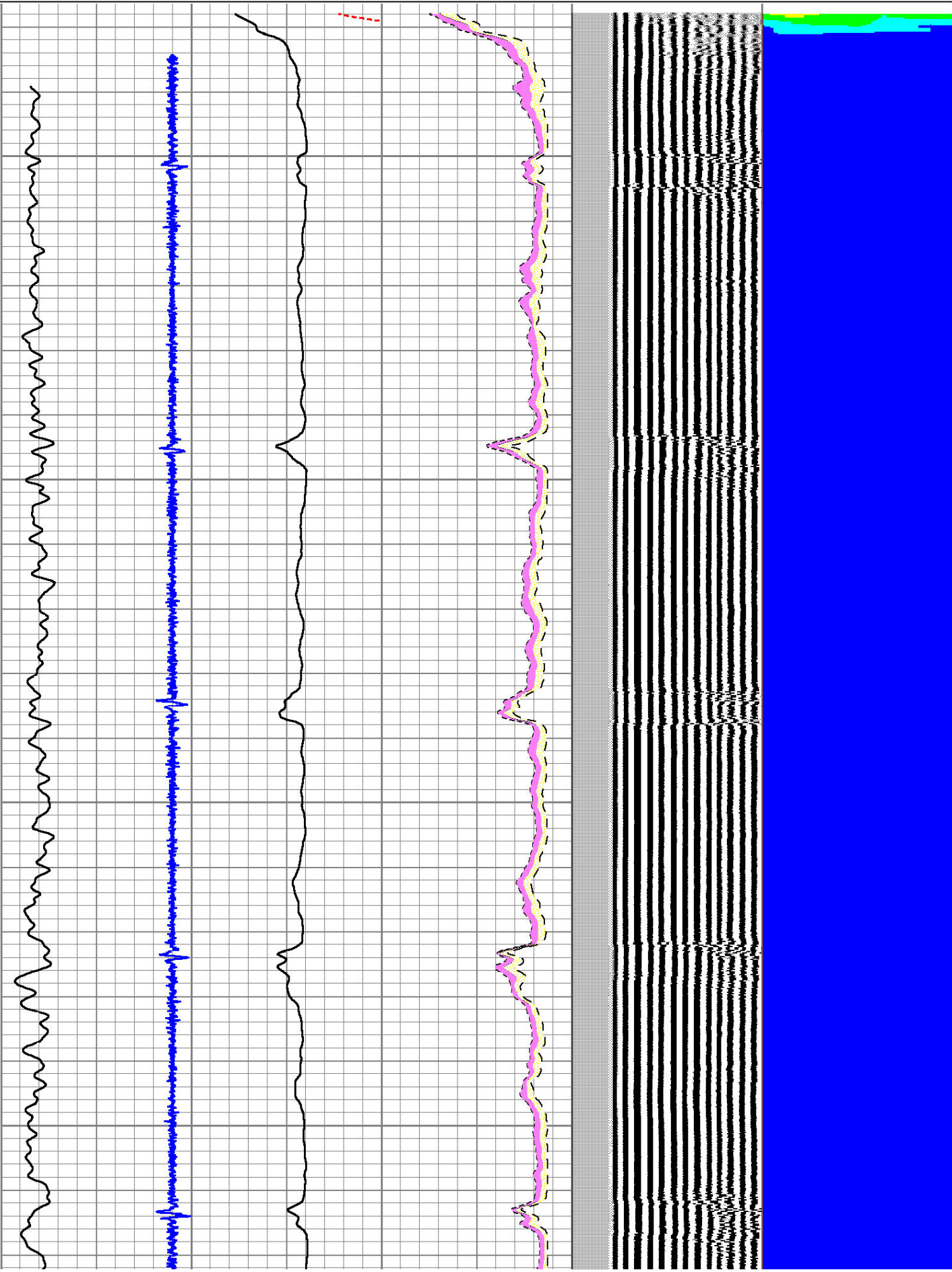
Total Weight: 120.00 lb

O.D. 2.75 in

-9	CCL	1	0	AMP (mV)	100	0	AMPAVG	150	200	VDL	1200	1	SECTOR MAP	8
0	GR (GAPI)	200	0	AMPx5 (mV)	30	0	AMPMAX	150				25		75
						0	AMPMIN	150						

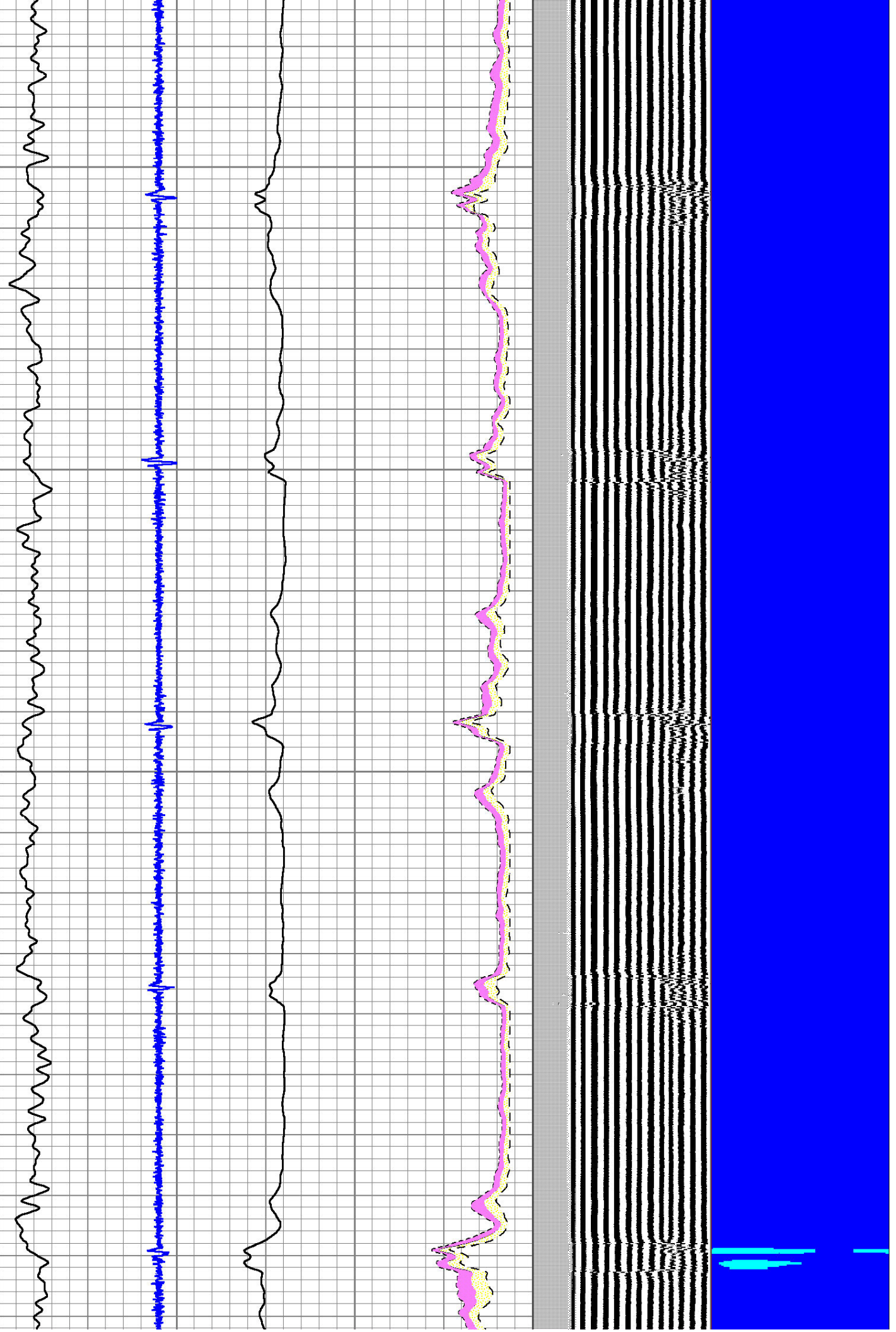
100

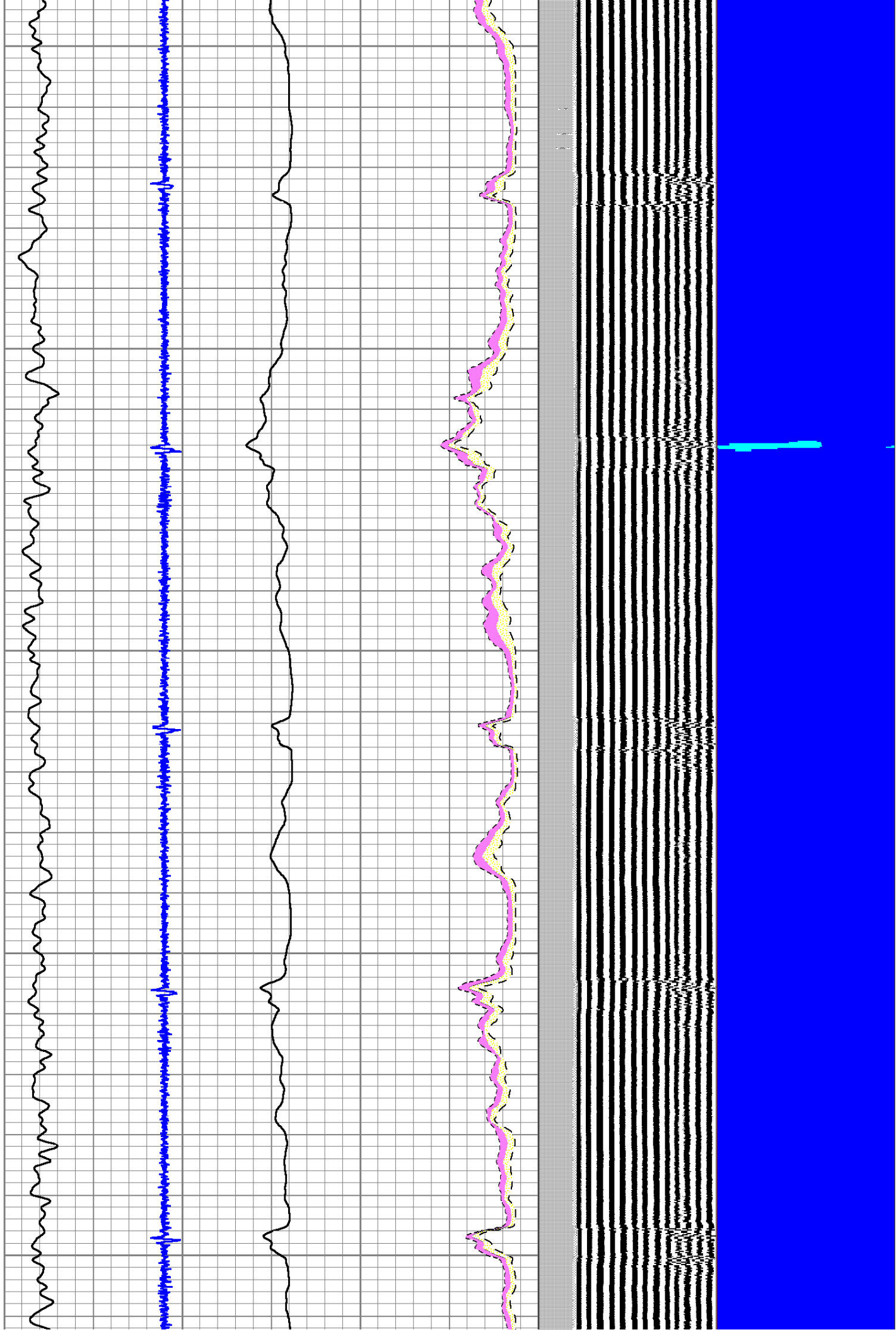
200



300

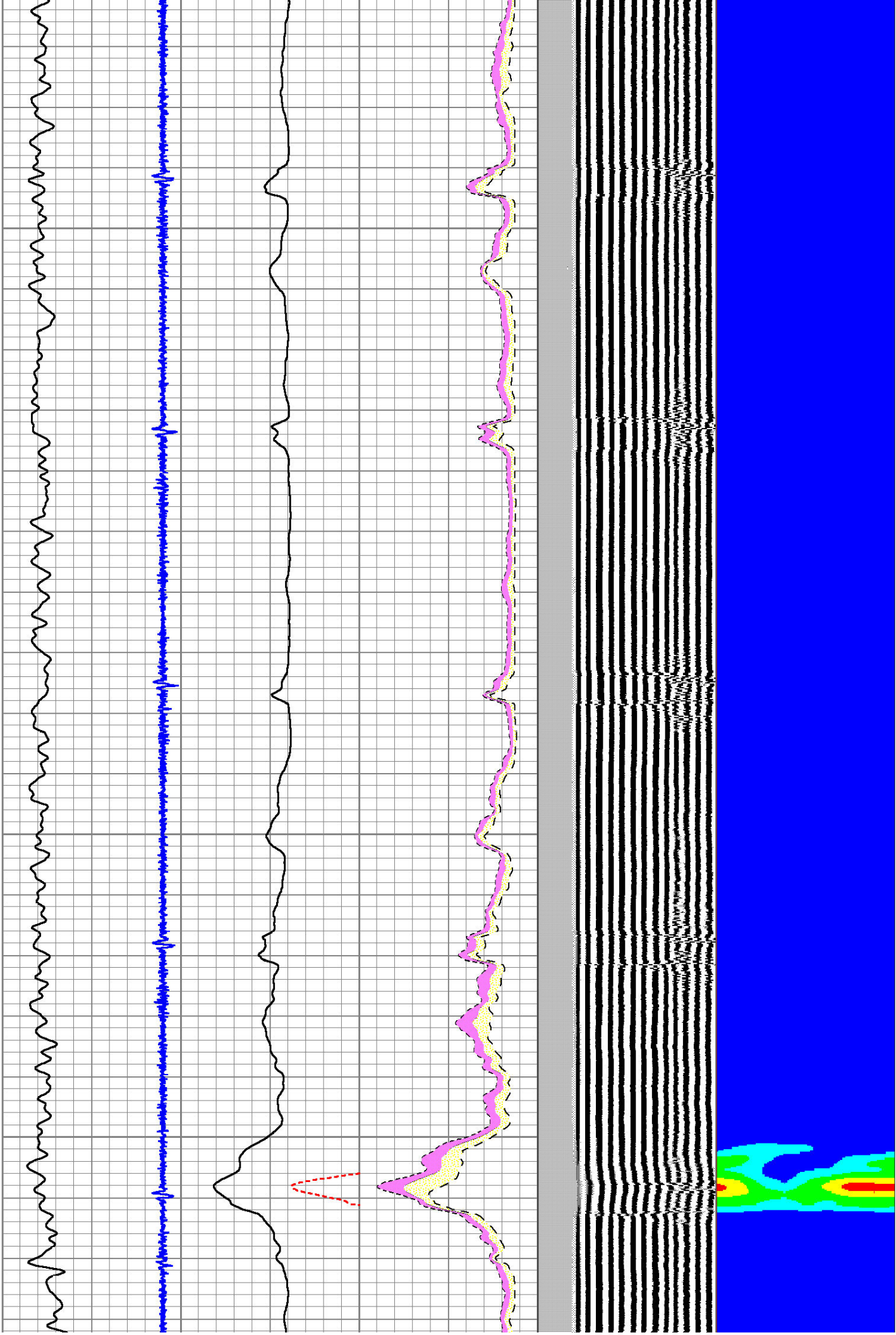
400



[illegible]

700

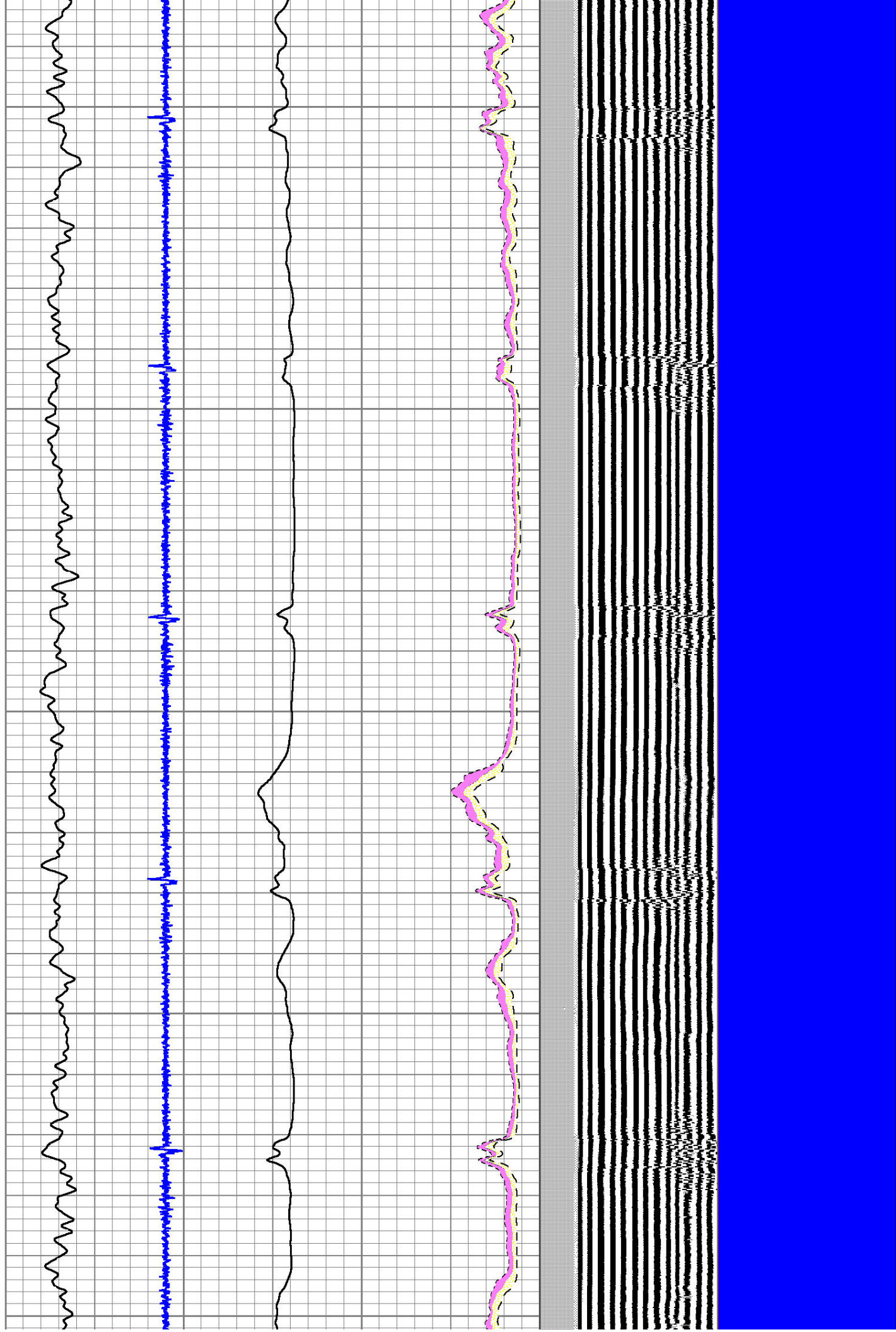
800



900

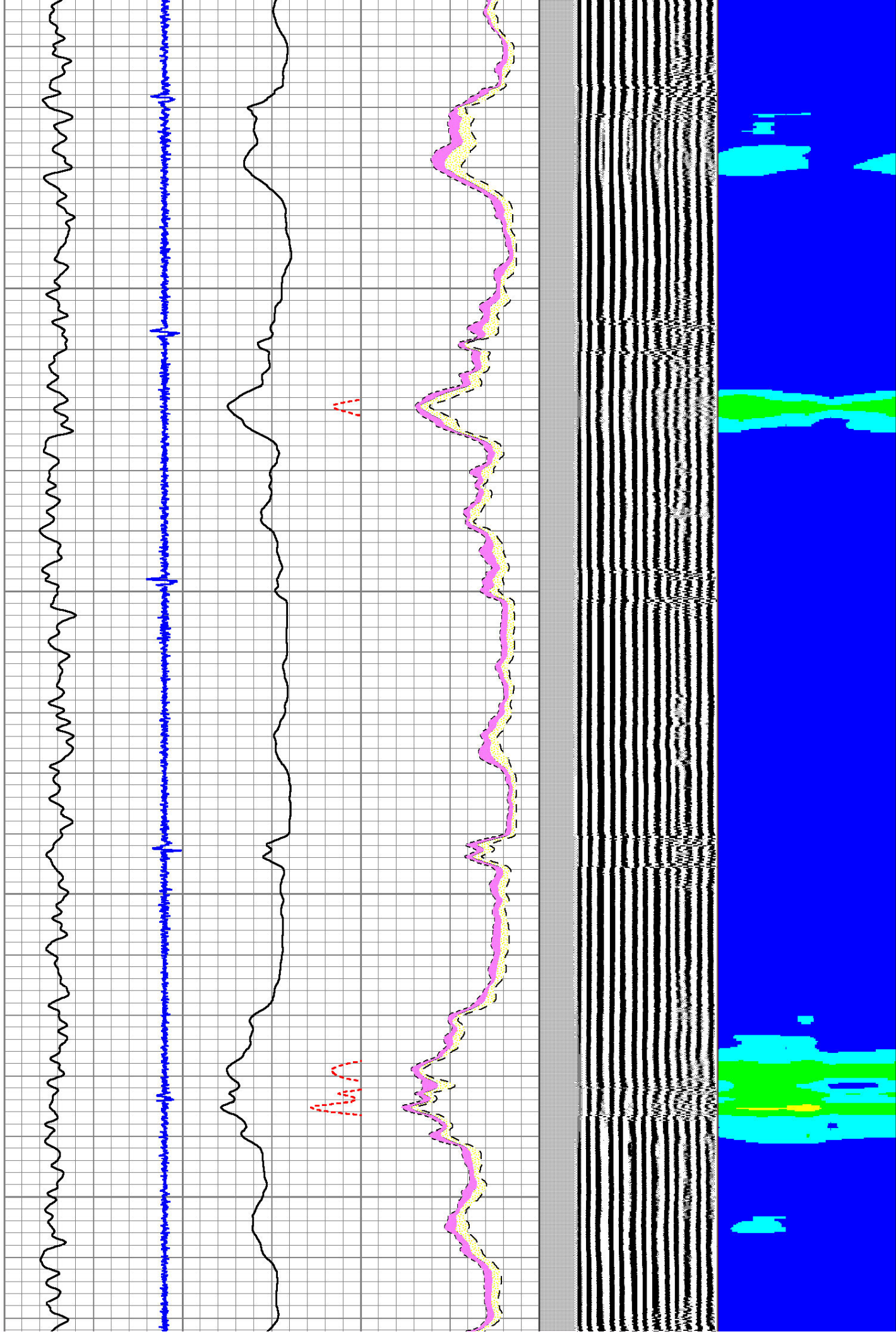
1000

1100



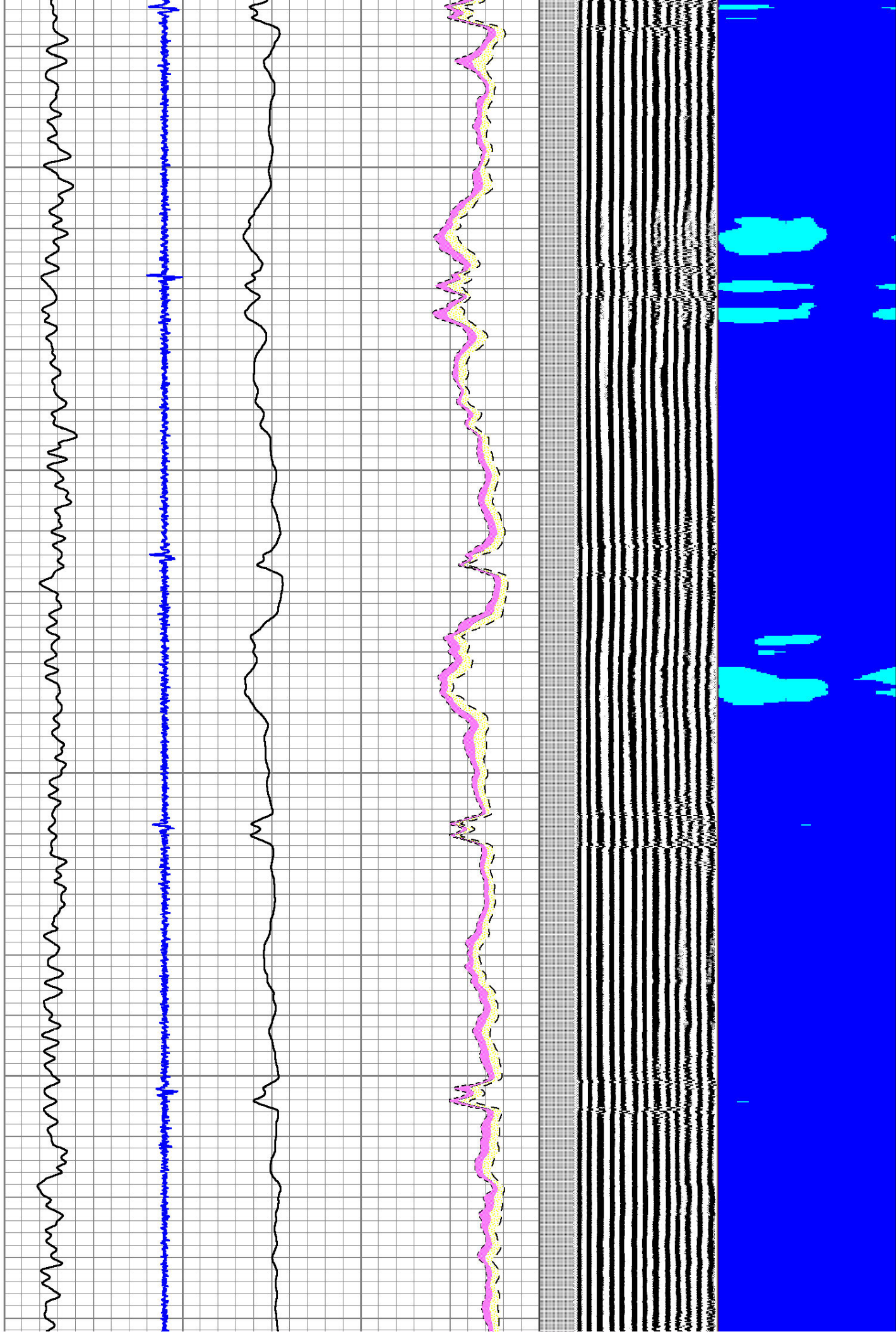
1200

1300



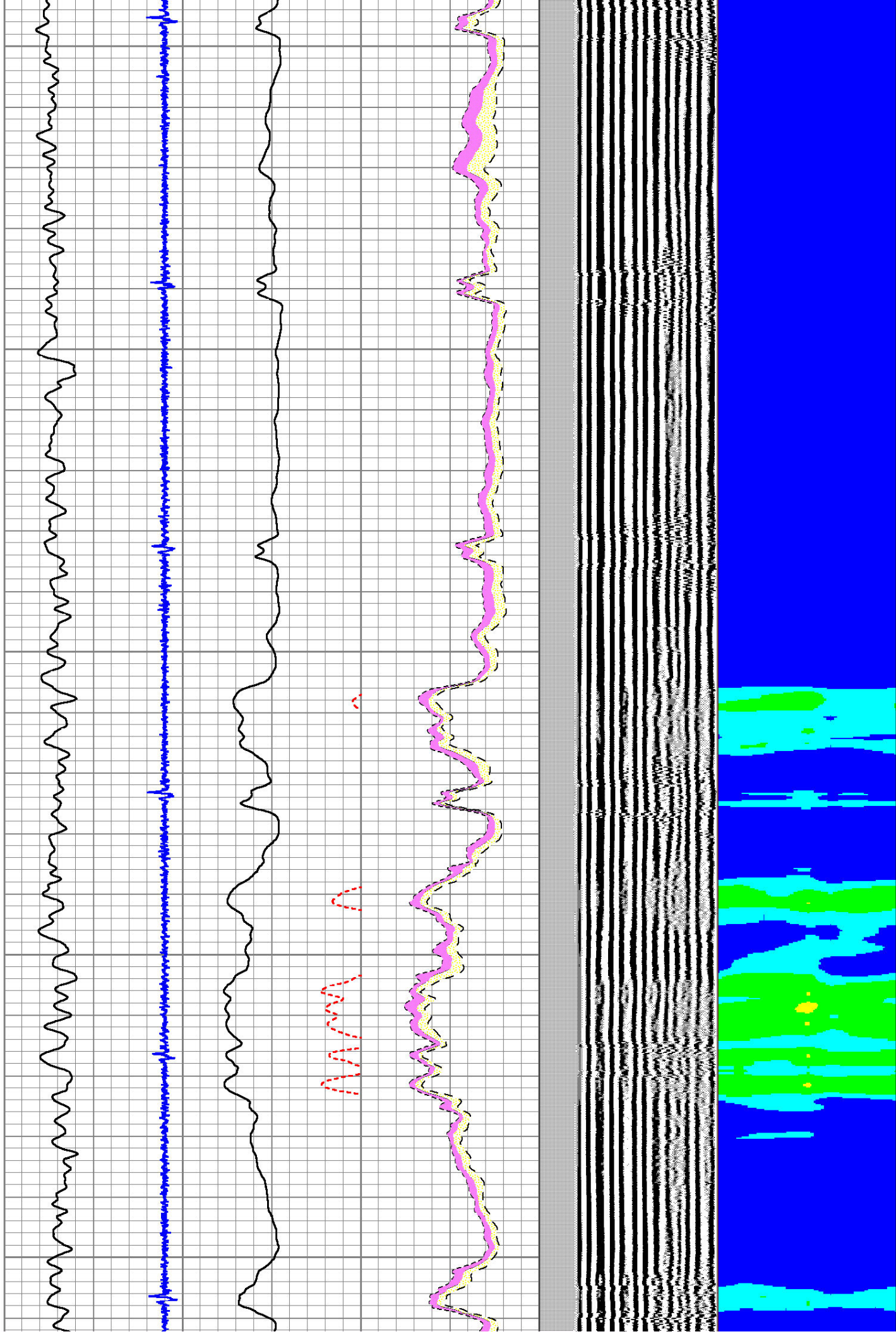
1400

1500



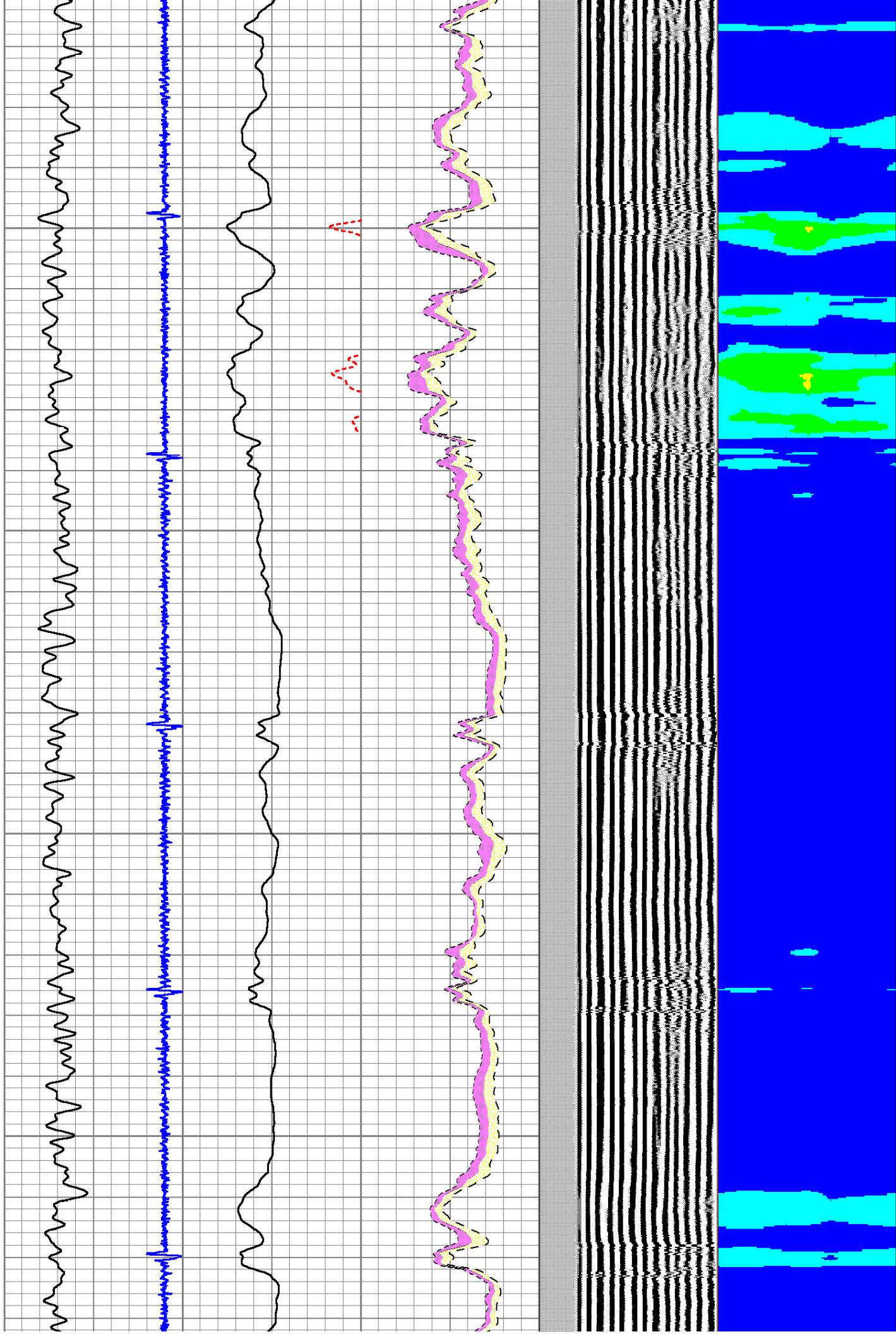
1600

1700



1800

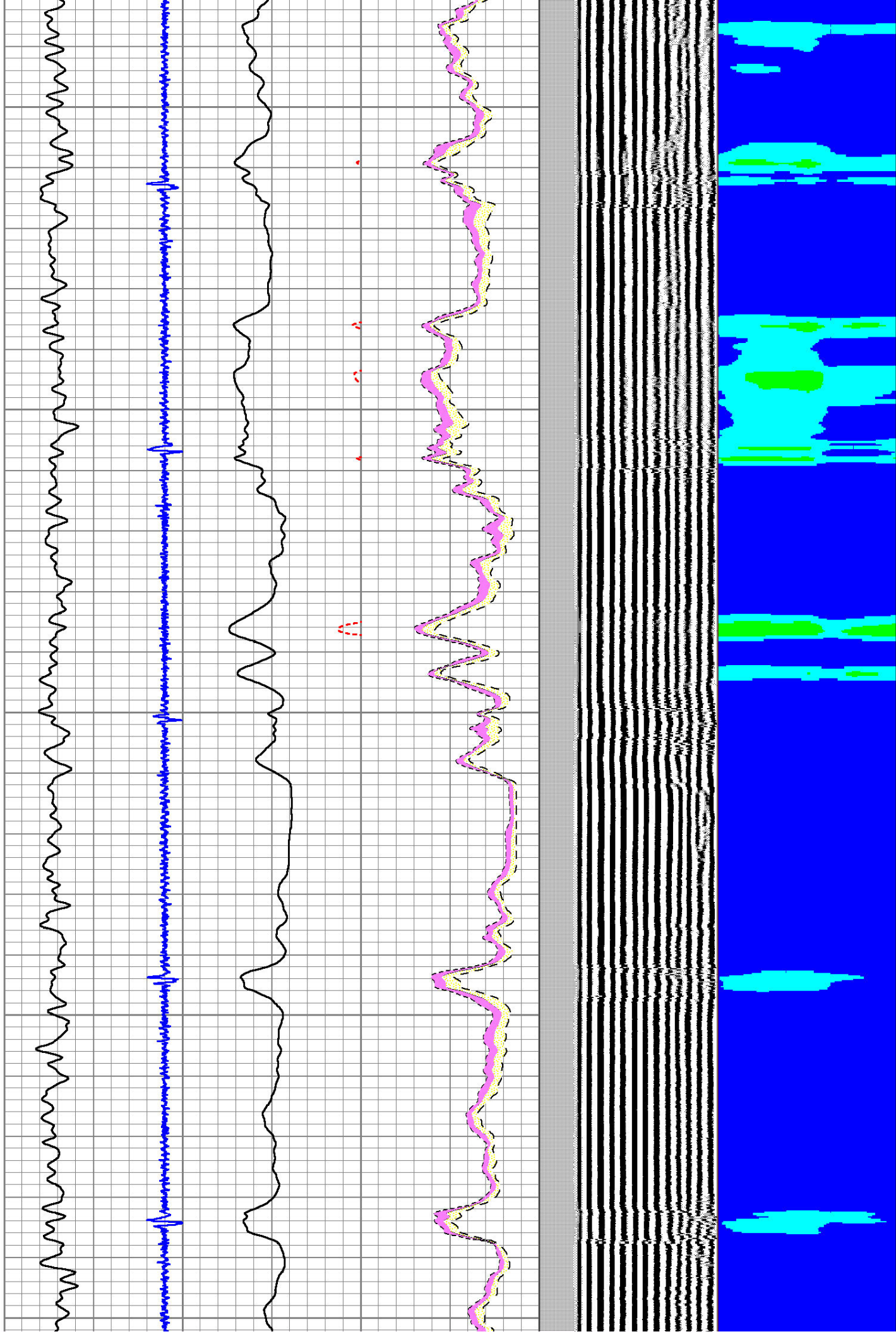
1900



2000

2100

2200



2300

2400

