

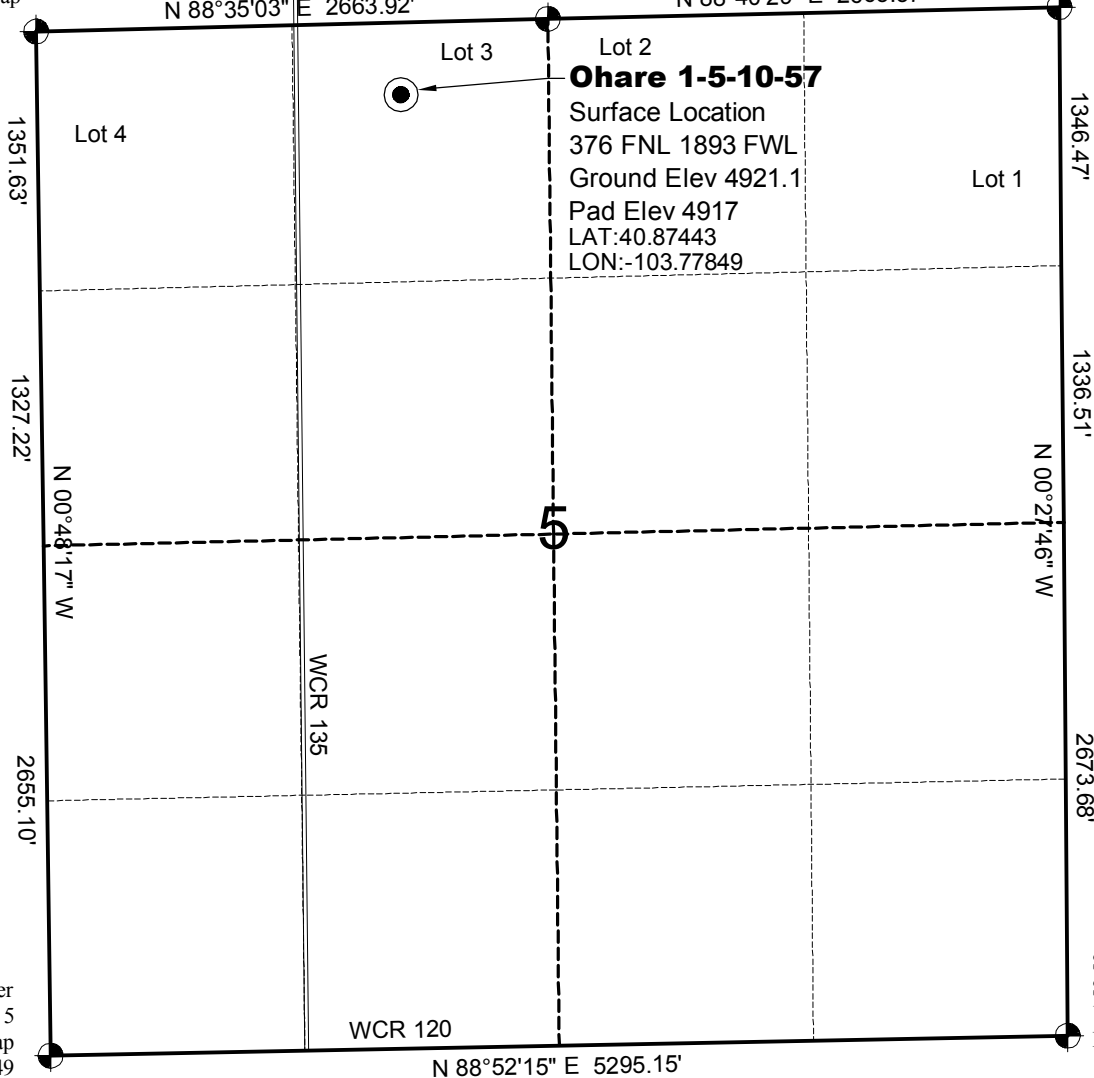
WELL LOCATION MAP

**OHARE
5-21-10-57 PAD**

NW Corner
Section 5
USGLO
Brass Cap

N1/4 Corner
Section 5
USGLO (Basis of Bearings)
Brass Cap

NE Corner
Section 5
Alum. Cap
PLS 38019

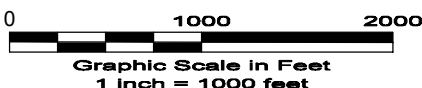


SURVEYOR'S STATEMENT

The undersigned hereby states that the well location shown hereon was staked on the ground based on existing monumentation and/or physical evidence found in the field and is correct to the best of my knowledge, information and belief.

NOTES

- 1.) Horizontal (NAD 83) and vertical (NAVD 88) datum is based on the Leica Geosystems SmartNet of Colorado.
- 2.) All directions, distances, and dimensions shown hereon are based on coordinates from the "Colorado coordinate system of 1983 north zone" (article 52 of title 38, C.R.S.).
- 3.) All section line dimensions shown hereon are based on field measurements of existing monuments and/or physical evidence found in the field unless otherwise indicated. Refer to land survey plats deposited in Weld County.
- 4.) Physical features shown hereon are for graphical representation only.
- 5.) See Form 2A for visible improvements within 400' of wellhead.
- 6.) Distances to nearest section lines are measured perpendicularly.
- 7.) This is not a land survey nor land survey plat.
- 8.) Date of Survey 10/7/11; Date of Drawing 7/30/13 REV 0
PDOP Reading: 2.1 Instrument Operator: Marc Woodard



GEO SURV

LAND SURVEYING AND MAPPING
LAFAYETTE - WINTER PARK
Ph 303 666 0379 Fx 303 665 6320

CARRIZO NIOBRARA LLC
OHARE 1-5-10-57

LOT 3 SECTION 5 T10N R57W
6th PM WELD COUNTY COLORADO