

STATE OF  
COLORADO

COGCC Document No. 2055837

Andrews - DNR, David &lt;david.andrews@state.co.us&gt;

---

**RE: L24 Cement Log/USIT Review**

---

**Denzin, Nathan** <Nathan.Denzin@encana.com>

Thu, Aug 22, 2013 at 10:53 AM

To: "Andrews - DNR, David" &lt;david.andrews@state.co.us&gt;

Cc: "Baltes, Andrew D." &lt;Andrew.Baltes@encana.com&gt;

Please see attached job data and procedures for both top off jobs. The plot shows both wells on it. Please let me know if you have any questions.

Regards,

Nate Denzin

**Encana Oil & Gas (USA) Inc.**

North Piceance Drilling Engineer

Tel: 720-876-3476

Fax: 720-876-6329

Cell: 303-882-9394

Email: [nathan.denzin@encana.com](mailto:nathan.denzin@encana.com)

**From:** Andrews - DNR, David [mailto:[david.andrews@state.co.us](mailto:david.andrews@state.co.us)]

**Sent:** Thursday, August 08, 2013 3:25 PM

**To:** Denzin, Nathan

**Subject:** Re: L24 Cement Log/USIT Review

Nate,

As long as you have concurrence with BLM for these plans, then please proceed and email top-out cement details when they are available.

Thanks,

**David D. Andrews, P.E., P.G.**

Engineering Supervisor - Western Colorado

**State of Colorado**

**Oil and Gas Conservation Commission**

**NEW ADDRESS, EFFECTIVE 1/3/2013:**

**796 Megan Avenue, Suite 201**

**Rifle, Colorado 81650**

Office Phone: (970) 625-2497 Ext. 1

Cell Phone: (970) 456-5262

Fax: (970) 625-5682

E-mail: [David.Andrews@state.co.us](mailto:David.Andrews@state.co.us)

Website: <http://www.colorado.gov/cogcc>

On Thu, Aug 8, 2013 at 2:30 PM, Denzin, Nathan <[Nathan.Denzin@encana.com](mailto:Nathan.Denzin@encana.com)> wrote:

David,

For both the SGU 8505A and 8505B-24 L24 496, we chose to rig up and run in the hole with 1.9" tubing, tongs, and a mule shoe. The objective was to further assess the tops of these cement jobs. After better understanding the cement tops, we would then recommend remediation designs.

The results of these operations were promising in a couple different ways.

**SGU 8505A-24 L24 496** API No. 05-045-21177

If you recall, the SGU 8505A-24 L24 had very little or no cement from 2000' MD to surface. In this well, we were able to run 1.9" tubing to 1,122 feet. We also were able to circulate to hole clean.

- The preferred remediation for this well is to pump 15.8 ppg (1.16 ft<sup>3</sup>/sx) to surface from where the tubing is currently landed. Calculated volume would be 660 sacks. If cement is to fall while thickening, we would continue to top off with the same cement grade from surface.

.

.

.

**SGU 8505B-24 L24 496** API No. 05-045-21167

Judging from the USIT logs, this well had better coverage in general. The USIT map shows to have some decent cement close to surface, with some areas of poorer bond from 2500-1500' MD.

While running in the hole with tubing on this well, we were not able to get past 208' MD. Multiple attempts were made to get past this point, and field personnel describe hitting something "very hard" at this depth. Observations from the field were that they got circulation and circulated hole clean with water. While circulating the hole clean, CEMNET was seen at surface. This isn't a surprise as we had good returns on this well for almost the entire job. The presence of CEMNET and hitting hard at 208' would indicate a good cement top at that depth.

- The preferred remediation for this well is to pump 15.8 ppg (1.16 ft<sup>3</sup>/sx) to surface from where the tubing is currently landed. Calculated volume would be 130 sacks. If cement is to fall while thickening, we would continue to top off with the same cement grade from surface.
- Although we could not get as deep with tubing on this well, that was expected as the USIT logs for this well look much better than the 8505A-24 L24.

I would appreciate feedback by way of phone call or email on what we are recommending for remediation. We will wait to proceed until discussing with you. Thank you for your time.

Regards,

Nate Denzin  
**Encana Oil & Gas (USA) Inc.**  
North Piceance Drilling Engineer  
Tel: [720-876-3476](tel:720-876-3476)  
Fax: [720-876-6329](tel:720-876-6329)  
Cell: [303-882-9394](tel:303-882-9394)  
Email: [nathan.denzin@encana.com](mailto:nathan.denzin@encana.com)

This email communication and any files transmitted with it may contain confidential and or proprietary information and is provided for the use of the intended recipient only. Any review, retransmission or dissemination of this information by anyone other than the intended recipient is prohibited. If you receive this email in error, please contact the sender and delete this communication and any copies immediately. Thank you.

<http://www.encana.com>

This email communication and any files transmitted with it may contain confidential and or proprietary information and is provided for the use of the intended recipient only. Any review, retransmission or dissemination of this information by anyone other than the intended recipient is prohibited. If you receive this email in error, please contact the sender and delete this communication and any copies immediately. Thank you.

<http://www.encana.com>

---

## 2 attachments

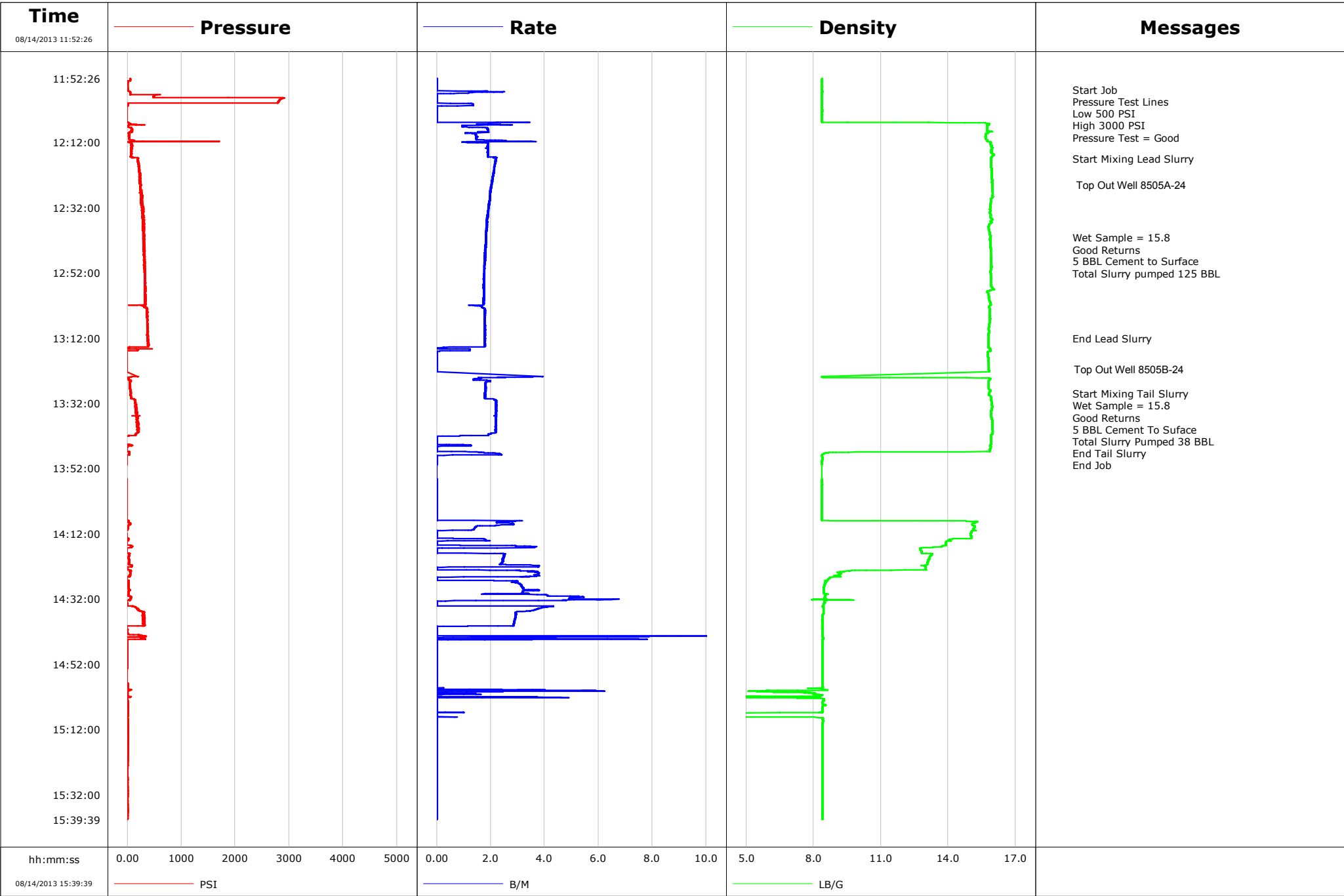


**ATT\_CAIO-00682 9 Plot Report Client.pdf**  
1136K



**SGU 8505A-24 L24 Top Out Proposal v2.docx**  
1124K

<b>Well</b>	SGU 8505-24	<b>Client</b>	Encana
<b>Field</b>	Story Gultch	<b>SIR No.</b>	CAIO-00682/ CAI
<b>Engineer</b>	Travis Willardson/ C Fairbrook	<b>Job Type</b>	Top Out
<b>Country</b>	US Land	<b>Job Date</b>	8/14/13



# Cementing Service Report

				Customer Encana		Job Number CAIO-00682/ CAI	
Well SGU 8505-24 8505-24			Location (legal) L24		Schlumberger Location Grand Junction		Job Start Aug/14/2013
Field Story Gultch		Formation Name/Type Dirty-Sandstone		Deviation deg	Bit Size in	Well MD 450.0 ft	Well TVD ft
County Garfield		State/Province Colorado		BHP psi	BHST 80 degF	BHCT 75 degF	Pore Press. Gradient lb/gal
Well Master 0631465738		API/UWI					
Rig Name Patterson 330		Drilled For Gas		Service Via Land		Casing/Liner	
Offshore Zone		Well Class New		Well Type Development			
Drilling Fluid Type		Max. Density lb/gal		Plastic Viscosity cP		Tubing/Drill Pipe	
Service Line Cementing		Job Type Top Out					
Max. Allowed Tub. Press psi		Max. Allowed Ann. Press psi		WH Connection 2 3/8" 4.7# T/S		Perforations/Open Hole	
Service Instructions 605 SK = 15.8 G 125 BBL Lead 290 SK = 15.8 G 40 BBL Tail				Top, ft		Bottom, ft	
				shot/ft		No. of Shots	
				Treat Down		Displacement bbl	
						Packer Type	
						Packer Depth ft	
				Tubing Vol. bbl		Casing Vol. bbl	
						Annular Vol. bbl	
						Openhole Vol. bbl	
Casing/Tubing Secured <input type="checkbox"/>		1 Hole Vol. Circulated prior to Cement <input type="checkbox"/>		Casing Tools		Squeeze Job	
Lift Pressure 339 psi				Shoe Type		Squeeze Type	
Pipe Rotated <input type="checkbox"/>		Pipe Reciprocated <input type="checkbox"/>		Shoe Depth ft		Tool Type	
No. Centralizers		Top Plugs		Bottom Plugs		Stage Tool Type	
						Tool Depth ft	
Cement Head Type				Stage Tool Depth ft		Tail Pipe Size in	
Job Scheduled For Aug/14/2013		Arrived on Location Aug/14/2013		Leave Location Aug/14/2013		Collar Type	
						Tail Pipe Depth ft	
						Collar Depth ft	
						Sqz. Total Vol. bbl	
Date	Time 24-hr clock	Treating Pressure PSI	Flow Rate B/M	Density LB/G	Volume BBL	Message	
08/14/2013	11:52:26	0.0	0.0	0.0	0.0	Started Acquisition	
08/14/2013	11:52:56	0.0	0.0	0.0	0.0		
08/14/2013	11:53:26	0.0	0.0	0.0	0.0		
08/14/2013	11:53:56	0.0	0.0	0.0	0.0		
08/14/2013	11:54:26	0.0	0.0	0.0	0.0		
08/14/2013	11:54:56	0.0	0.0	0.0	0.0		
08/14/2013	11:55:26	0.0	0.0	0.0	0.0		
08/14/2013	11:55:51	0.0	0.0	0.0	0.0	Start Job	
08/14/2013	11:55:56	0.0	0.0	0.0	0.0		
08/14/2013	11:56:26	0.0	0.0	0.0	0.0		
08/14/2013	11:56:56	0.0	0.0	0.0	0.0		
08/14/2013	11:57:06	0.0	0.0	0.0	0.0	Pressure Test Lines	
08/14/2013	11:57:26	0.0	0.0	0.0	0.0		
08/14/2013	11:57:56	0.0	0.0	0.0	0.0		
08/14/2013	11:57:57	0.0	0.0	0.0	0.0	Low 500 PSI	
08/14/2013	11:58:26	0.0	0.0	0.0	0.0		
08/14/2013	11:58:56	0.0	0.0	0.0	0.0		
08/14/2013	11:59:26	0.0	0.0	0.0	0.0		
08/14/2013	11:59:56	0.0	0.0	0.0	0.0		
08/14/2013	12:00:26	0.0	0.0	0.0	0.0		
08/14/2013	12:00:56	0.0	0.0	0.0	0.0		

Well SGU 8505-24 8505-24			Field Story Gultch		Job Start Aug/14/2013	Customer Encana	Job Number CAIO-00682/ CAI
Date	Time 24-hr clock	Treating Pressure PSI	Flow Rate B/M	Density LB/G	Volume BBL	Message	
08/14/2013	12:01:56	0.0	0.0	0.0	0.0		
08/14/2013	12:02:26	0.0	0.0	0.0	0.0		
08/14/2013	12:02:56	0.0	0.0	0.0	0.0		
08/14/2013	12:03:26	0.0	0.0	0.0	0.0		
08/14/2013	12:03:56	0.0	0.0	0.0	0.0		
08/14/2013	12:04:26	0.0	0.0	0.0	0.0		
08/14/2013	12:04:56	0.0	0.0	0.0	0.0		
08/14/2013	12:05:26	0.0	0.0	0.0	0.0		
08/14/2013	12:05:56	0.0	0.0	0.0	0.0		
08/14/2013	12:06:26	0.0	0.0	0.0	0.0		
08/14/2013	12:06:56	0.0	0.0	0.0	0.0		
08/14/2013	12:07:26	0.0	0.0	0.0	0.0		
08/14/2013	12:07:56	0.0	0.0	0.0	0.0		
08/14/2013	12:08:26	0.0	0.0	0.0	0.0		
08/14/2013	12:08:56	0.0	0.0	0.0	0.0		
08/14/2013	12:09:26	0.0	0.0	0.0	0.0		
08/14/2013	12:09:56	0.0	0.0	0.0	0.0		
08/14/2013	12:10:26	0.0	0.0	0.0	0.0		
08/14/2013	12:10:56	0.0	0.0	0.0	0.0		
08/14/2013	12:11:26	0.0	0.0	0.0	0.0		
08/14/2013	12:11:56	0.0	0.0	0.0	0.0		
08/14/2013	12:12:26	0.0	0.0	0.0	0.0		
08/14/2013	12:12:56	0.0	0.0	0.0	0.0		
08/14/2013	12:13:26	0.0	0.0	0.0	0.0		
08/14/2013	12:13:56	0.0	0.0	0.0	0.0		
08/14/2013	12:14:26	0.0	0.0	0.0	0.0		
08/14/2013	12:14:56	0.0	0.0	0.0	0.0		
08/14/2013	12:15:26	0.0	0.0	0.0	0.0		
08/14/2013	12:15:56	0.0	0.0	0.0	0.0		
08/14/2013	12:16:26	0.0	0.0	0.0	0.0		
08/14/2013	12:16:56	0.0	0.0	0.0	0.0		
08/14/2013	12:17:00	0.0	0.0	0.0	0.0	Start Mixing Lead Slurry	
08/14/2013	12:17:26	0.0	0.0	0.0	0.0		
08/14/2013	12:17:56	0.0	0.0	0.0	0.0		
08/14/2013	12:18:26	0.0	0.0	0.0	0.0		
08/14/2013	12:18:56	0.0	0.0	0.0	0.0		
08/14/2013	12:19:26	0.0	0.0	0.0	0.0		
08/14/2013	12:19:56	0.0	0.0	0.0	0.0		
08/14/2013	12:20:26	0.0	0.0	0.0	0.0		
08/14/2013	12:20:56	0.0	0.0	0.0	0.0		
08/14/2013	12:21:26	0.0	0.0	0.0	0.0		
08/14/2013	12:21:56	0.0	0.0	0.0	0.0		
08/14/2013	12:22:26	0.0	0.0	0.0	0.0		
08/14/2013	12:22:56	0.0	0.0	0.0	0.0		
08/14/2013	12:23:26	0.0	0.0	0.0	0.0		
08/14/2013	12:23:56	0.0	0.0	0.0	0.0		
08/14/2013	12:24:26	0.0	0.0	0.0	0.0		
08/14/2013	12:24:56	0.0	0.0	0.0	0.0		
08/14/2013	12:25:26	0.0	0.0	0.0	0.0		
08/14/2013	12:25:56	0.0	0.0	0.0	0.0		
08/14/2013	12:26:26	0.0	0.0	0.0	0.0		
08/14/2013	12:26:56	0.0	0.0	0.0	0.0		
08/14/2013	12:27:26	0.0	0.0	0.0	0.0		
08/14/2013	12:27:56	0.0	0.0	0.0	0.0		

Well			Field		Job Start	Customer	Job Number
SGU 8505-24 8505-24			Story Gultch		Aug/14/2013	Encana	CAIO-00682/ CAI
Date	Time 24-hr clock	Treating Pressure PSI	Flow Rate B/M	Density LB/G	Volume BBL	Message	
08/14/2013	12:28:56	0.0	0.0	0.0	0.0		
08/14/2013	12:29:26	0.0	0.0	0.0	0.0		
08/14/2013	12:29:56	0.0	0.0	0.0	0.0		
08/14/2013	12:30:26	0.0	0.0	0.0	0.0		
08/14/2013	12:30:56	0.0	0.0	0.0	0.0		
08/14/2013	12:31:26	0.0	0.0	0.0	0.0		
08/14/2013	12:31:56	0.0	0.0	0.0	0.0		
08/14/2013	12:32:26	0.0	0.0	0.0	0.0		
08/14/2013	12:32:56	0.0	0.0	0.0	0.0		
08/14/2013	12:33:26	0.0	0.0	0.0	0.0		
08/14/2013	12:33:56	0.0	0.0	0.0	0.0		
08/14/2013	12:34:26	0.0	0.0	0.0	0.0		
08/14/2013	12:34:56	0.0	0.0	0.0	0.0		
08/14/2013	12:35:26	0.0	0.0	0.0	0.0		
08/14/2013	12:35:56	0.0	0.0	0.0	0.0		
08/14/2013	12:36:26	0.0	0.0	0.0	0.0		
08/14/2013	12:36:56	0.0	0.0	0.0	0.0		
08/14/2013	12:37:26	0.0	0.0	0.0	0.0		
08/14/2013	12:37:56	0.0	0.0	0.0	0.0		
08/14/2013	12:38:26	0.0	0.0	0.0	0.0		
08/14/2013	12:38:56	0.0	0.0	0.0	0.0		
08/14/2013	12:39:26	0.0	0.0	0.0	0.0		
08/14/2013	12:39:56	0.0	0.0	0.0	0.0		
08/14/2013	12:40:26	0.0	0.0	0.0	0.0		
08/14/2013	12:40:56	0.0	0.0	0.0	0.0		
08/14/2013	12:41:13	0.0	0.0	0.0	0.0	Wet Sample = 15.8	
08/14/2013	12:41:14	0.0	0.0	0.0	0.0	Good Returns	
08/14/2013	12:41:26	0.0	0.0	0.0	0.0		
08/14/2013	12:41:56	0.0	0.0	0.0	0.0		
08/14/2013	12:42:26	0.0	0.0	0.0	0.0		
08/14/2013	12:42:56	0.0	0.0	0.0	0.0		
08/14/2013	12:43:26	0.0	0.0	0.0	0.0		
08/14/2013	12:43:56	0.0	0.0	0.0	0.0		
08/14/2013	12:44:26	0.0	0.0	0.0	0.0		
08/14/2013	12:44:56	0.0	0.0	0.0	0.0		
08/14/2013	12:45:26	0.0	0.0	0.0	0.0		
08/14/2013	12:45:56	0.0	0.0	0.0	0.0		
08/14/2013	12:46:26	0.0	0.0	0.0	0.0		
08/14/2013	12:46:56	0.0	0.0	0.0	0.0		
08/14/2013	12:47:26	0.0	0.0	0.0	0.0		
08/14/2013	12:47:56	0.0	0.0	0.0	0.0		
08/14/2013	12:48:26	0.0	0.0	0.0	0.0		
08/14/2013	12:48:56	0.0	0.0	0.0	0.0		
08/14/2013	12:49:26	0.0	0.0	0.0	0.0		
08/14/2013	12:49:56	0.0	0.0	0.0	0.0		
08/14/2013	12:50:26	0.0	0.0	0.0	0.0		
08/14/2013	12:50:56	0.0	0.0	0.0	0.0		
08/14/2013	12:51:00	0.0	0.0	0.0	0.0	Total Slurry pumped 125 BBL	
08/14/2013	12:51:26	0.0	0.0	0.0	0.0		
08/14/2013	12:51:56	0.0	0.0	0.0	0.0		
08/14/2013	12:52:26	0.0	0.0	0.0	0.0		
08/14/2013	12:52:56	0.0	0.0	0.0	0.0		
08/14/2013	12:53:26	0.0	0.0	0.0	0.0		
08/14/2013	12:53:56	0.0	0.0	0.0	0.0		

Well SGU 8505-24 8505-24			Field Story Gultch		Job Start Aug/14/2013	Customer Encana	Job Number CAIO-00682/ CAI
Date	Time 24-hr clock	Treating Pressure PSI	Flow Rate B/M	Density LB/G	Volume BBL	Message	
08/14/2013	12:54:56	0.0	0.0	0.0	0.0		
08/14/2013	12:55:26	0.0	0.0	0.0	0.0		
08/14/2013	12:55:56	0.0	0.0	0.0	0.0		
08/14/2013	12:56:26	0.0	0.0	0.0	0.0		
08/14/2013	12:56:56	0.0	0.0	0.0	0.0		
08/14/2013	12:57:26	0.0	0.0	0.0	0.0		
08/14/2013	12:57:56	0.0	0.0	0.0	0.0		
08/14/2013	12:58:26	0.0	0.0	0.0	0.0		
08/14/2013	12:58:56	0.0	0.0	0.0	0.0		
08/14/2013	12:59:26	0.0	0.0	0.0	0.0		
08/14/2013	12:59:56	0.0	0.0	0.0	0.0		
08/14/2013	13:00:26	0.0	0.0	0.0	0.0		
08/14/2013	13:00:56	0.0	0.0	0.0	0.0		
08/14/2013	13:01:26	0.0	0.0	0.0	0.0		
08/14/2013	13:01:56	0.0	0.0	0.0	0.0		
08/14/2013	13:02:26	0.0	0.0	0.0	0.0		
08/14/2013	13:02:56	0.0	0.0	0.0	0.0		
08/14/2013	13:03:26	0.0	0.0	0.0	0.0		
08/14/2013	13:03:56	0.0	0.0	0.0	0.0		
08/14/2013	13:04:26	0.0	0.0	0.0	0.0		
08/14/2013	13:04:56	0.0	0.0	0.0	0.0		
08/14/2013	13:05:26	0.0	0.0	0.0	0.0		
08/14/2013	13:05:56	0.0	0.0	0.0	0.0		
08/14/2013	13:06:26	0.0	0.0	0.0	0.0		
08/14/2013	13:06:56	0.0	0.0	0.0	0.0		
08/14/2013	13:07:26	0.0	0.0	0.0	0.0		
08/14/2013	13:07:56	0.0	0.0	0.0	0.0		
08/14/2013	13:08:26	0.0	0.0	0.0	0.0		
08/14/2013	13:08:56	0.0	0.0	0.0	0.0		
08/14/2013	13:09:26	0.0	0.0	0.0	0.0		
08/14/2013	13:09:56	0.0	0.0	0.0	0.0		
08/14/2013	13:10:26	0.0	0.0	0.0	0.0		
08/14/2013	13:10:56	0.0	0.0	0.0	0.0		
08/14/2013	13:11:26	0.0	0.0	0.0	0.0		
08/14/2013	13:11:56	0.0	0.0	0.0	0.0		
08/14/2013	13:12:00	0.0	0.0	0.0	0.0	End Lead Slurry	
08/14/2013	13:12:26	0.0	0.0	0.0	0.0		
08/14/2013	13:12:56	0.0	0.0	0.0	0.0		
08/14/2013	13:13:26	0.0	0.0	0.0	0.0		
08/14/2013	13:13:56	0.0	0.0	0.0	0.0		
08/14/2013	13:14:26	0.0	0.0	0.0	0.0		
08/14/2013	13:14:56	0.0	0.0	0.0	0.0		
08/14/2013	13:15:26	0.0	0.0	0.0	0.0		
08/14/2013	13:15:56	0.0	0.0	0.0	0.0		
08/14/2013	13:16:26	0.0	0.0	0.0	0.0		
08/14/2013	13:16:56	0.0	0.0	0.0	0.0		
08/14/2013	13:17:26	0.0	0.0	0.0	0.0		
08/14/2013	13:17:56	0.0	0.0	0.0	0.0		
08/14/2013	13:18:26	0.0	0.0	0.0	0.0		
08/14/2013	13:18:56	0.0	0.0	0.0	0.0		
08/14/2013	13:19:26	0.0	0.0	0.0	0.0		
08/14/2013	13:19:56	0.0	0.0	0.0	0.0		
08/14/2013	13:20:26	0.0	0.0	0.0	0.0		
08/14/2013	13:20:56	0.0	0.0	0.0	0.0		



Well SGU 8505-24 8505-24			Field Story Gultch		Job Start Aug/14/2013	Customer Encana	Job Number CAIO-00682/ CAI
Date	Time 24-hr clock	Treating Pressure PSI	Flow Rate B/M	Density LB/G	Volume BBL	Message	
08/14/2013	13:21:56	0.0	0.0	0.0	0.0		
08/14/2013	13:23:56	0.0	0.0	0.0	0.0		
08/14/2013	13:24:26	0.0	0.0	0.0	0.0		
08/14/2013	13:24:56	0.0	0.0	0.0	0.0		
08/14/2013	13:25:26	0.0	0.0	0.0	0.0		
08/14/2013	13:25:56	0.0	0.0	0.0	0.0		
08/14/2013	13:26:26	0.0	0.0	0.0	0.0		
08/14/2013	13:26:56	0.0	0.0	0.0	0.0		
08/14/2013	13:27:26	0.0	0.0	0.0	0.0		
08/14/2013	13:27:56	0.0	0.0	0.0	0.0		
08/14/2013	13:28:26	0.0	0.0	0.0	0.0		
08/14/2013	13:28:56	0.0	0.0	0.0	0.0		
08/14/2013	13:29:00	0.0	0.0	0.0	0.0	Start Mixing Tail Slurry	
08/14/2013	13:29:26	0.0	0.0	0.0	0.0		
08/14/2013	13:29:56	0.0	0.0	0.0	0.0		
08/14/2013	13:30:05	0.0	0.0	0.0	0.0	Wet Sample = 15.8	
08/14/2013	13:30:06	0.0	0.0	0.0	0.0	Total Slurry Pumped 38 BBL	
08/14/2013	13:30:26	0.0	0.0	0.0	0.0		
08/14/2013	13:30:56	0.0	0.0	0.0	0.0		
08/14/2013	13:31:00	0.0	0.0	0.0	0.0	End Tail Slurry	
08/14/2013	13:31:26	0.0	0.0	0.0	0.0		
08/14/2013	13:31:56	0.0	0.0	0.0	0.0		
08/14/2013	13:32:26	0.0	0.0	0.0	0.0		
08/14/2013	13:32:56	0.0	0.0	0.0	0.0		
08/14/2013	13:33:26	0.0	0.0	0.0	0.0		
08/14/2013	13:33:56	0.0	0.0	0.0	0.0		
08/14/2013	13:34:26	0.0	0.0	0.0	0.0		
08/14/2013	13:34:56	0.0	0.0	0.0	0.0		
08/14/2013	13:35:26	0.0	0.0	0.0	0.0		
08/14/2013	13:35:56	0.0	0.0	0.0	0.0		
08/14/2013	13:36:26	0.0	0.0	0.0	0.0		
08/14/2013	13:36:56	0.0	0.0	0.0	0.0		
08/14/2013	13:37:26	0.0	0.0	0.0	0.0		
08/14/2013	13:37:56	0.0	0.0	0.0	0.0		
08/14/2013	13:38:26	0.0	0.0	0.0	0.0		
08/14/2013	13:38:56	0.0	0.0	0.0	0.0		
08/14/2013	13:39:26	0.0	0.0	0.0	0.0		
08/14/2013	13:39:56	0.0	0.0	0.0	0.0		
08/14/2013	13:40:26	0.0	0.0	0.0	0.0		
08/14/2013	13:40:56	0.0	0.0	0.0	0.0		
08/14/2013	13:41:26	0.0	0.0	0.0	0.0		
08/14/2013	13:41:56	0.0	0.0	0.0	0.0		
08/14/2013	13:42:26	0.0	0.0	0.0	0.0		
08/14/2013	13:42:56	0.0	0.0	0.0	0.0		
08/14/2013	13:43:26	0.0	0.0	0.0	0.0		
08/14/2013	13:43:56	0.0	0.0	0.0	0.0		
08/14/2013	13:44:26	0.0	0.0	0.0	0.0		
08/14/2013	13:44:56	0.0	0.0	0.0	0.0		
08/14/2013	13:45:26	0.0	0.0	0.0	0.0		
08/14/2013	13:45:56	0.0	0.0	0.0	0.0		
08/14/2013	13:46:26	0.0	0.0	0.0	0.0		
08/14/2013	13:46:56	0.0	0.0	0.0	0.0		
08/14/2013	13:47:26	0.0	0.0	0.0	0.0		
08/14/2013	13:47:36	0.0	0.0	0.0	0.0	End Job	

Well SGU 8505-24 8505-24			Field Story Gultch		Job Start Aug/14/2013	Customer Encana	Job Number CAIO-00682/ CAI
Date	Time 24-hr clock	Treating Pressure PSI	Flow Rate B/M	Density LB/G	Volume BBL	Message	
08/14/2013	13:48:26	0.0	0.0	0.0	0.0		
08/14/2013	13:48:56	0.0	0.0	0.0	0.0		
08/14/2013	13:49:26	0.0	0.0	0.0	0.0		
08/14/2013	13:49:56	0.0	0.0	0.0	0.0		
08/14/2013	13:50:26	0.0	0.0	0.0	0.0		
08/14/2013	13:55:26	0.0	0.0	0.0	0.0		
08/14/2013	13:55:56	0.0	0.0	0.0	0.0		
08/14/2013	13:56:26	0.0	0.0	0.0	0.0		
08/14/2013	13:56:56	0.0	0.0	0.0	0.0		
08/14/2013	13:57:26	0.0	0.0	0.0	0.0		
08/14/2013	13:57:56	0.0	0.0	0.0	0.0		
08/14/2013	13:58:26	0.0	0.0	0.0	0.0		
08/14/2013	13:58:56	0.0	0.0	0.0	0.0		
08/14/2013	13:59:26	0.0	0.0	0.0	0.0		
08/14/2013	13:59:56	0.0	0.0	0.0	0.0		
08/14/2013	14:00:26	0.0	0.0	0.0	0.0		
08/14/2013	14:00:56	0.0	0.0	0.0	0.0		
08/14/2013	14:01:26	0.0	0.0	0.0	0.0		
08/14/2013	14:01:56	0.0	0.0	0.0	0.0		
08/14/2013	14:02:26	0.0	0.0	0.0	0.0		
08/14/2013	14:02:56	0.0	0.0	0.0	0.0		
08/14/2013	14:03:26	0.0	0.0	0.0	0.0		
08/14/2013	14:03:56	0.0	0.0	0.0	0.0		
08/14/2013	14:04:26	0.0	0.0	0.0	0.0		
08/14/2013	14:04:56	0.0	0.0	0.0	0.0		
08/14/2013	14:05:26	0.0	0.0	0.0	0.0		
08/14/2013	14:05:56	0.0	0.0	0.0	0.0		
08/14/2013	14:06:26	0.0	0.0	0.0	0.0		
08/14/2013	14:06:56	0.0	0.0	0.0	0.0		
08/14/2013	14:07:26	0.0	0.0	0.0	0.0		
08/14/2013	14:07:56	0.0	0.0	0.0	0.0		
08/14/2013	14:08:26	0.0	0.0	0.0	0.0		
08/14/2013	14:08:56	0.0	0.0	0.0	0.0		
08/14/2013	14:09:26	0.0	0.0	0.0	0.0		
08/14/2013	14:09:56	0.0	0.0	0.0	0.0		
08/14/2013	14:10:26	0.0	0.0	0.0	0.0		
08/14/2013	14:11:26	0.0	0.0	0.0	0.0		
08/14/2013	14:11:56	0.0	0.0	0.0	0.0		
08/14/2013	14:12:26	0.0	0.0	0.0	0.0		
08/14/2013	14:12:56	0.0	0.0	0.0	0.0		
08/14/2013	14:13:26	0.0	0.0	0.0	0.0		
08/14/2013	14:13:56	0.0	0.0	0.0	0.0		
08/14/2013	14:14:26	0.0	0.0	0.0	0.0		
08/14/2013	14:14:56	0.0	0.0	0.0	0.0		
08/14/2013	14:15:26	0.0	0.0	0.0	0.0		
08/14/2013	14:15:56	0.0	0.0	0.0	0.0		
08/14/2013	14:16:26	0.0	0.0	0.0	0.0		
08/14/2013	14:16:56	0.0	0.0	0.0	0.0		
08/14/2013	14:17:26	0.0	0.0	0.0	0.0		
08/14/2013	14:17:56	0.0	0.0	0.0	0.0		
08/14/2013	14:18:26	0.0	0.0	0.0	0.0		
08/14/2013	14:18:56	0.0	0.0	0.0	0.0		
08/14/2013	14:19:26	0.0	0.0	0.0	0.0		
08/14/2013	14:19:56	0.0	0.0	0.0	0.0		

Well SGU 8505-24 8505-24			Field Story Gultch		Job Start Aug/14/2013	Customer Encana	Job Number CAIO-00682/ CAI
Date	Time 24-hr clock	Treating Pressure PSI	Flow Rate B/M	Density LB/G	Volume BBL	Message	
08/14/2013	14:20:56	0.0	0.0	0.0	0.0		
08/14/2013	14:21:26	0.0	0.0	0.0	0.0		
08/14/2013	14:21:56	0.0	0.0	0.0	0.0		
08/14/2013	14:22:26	0.0	0.0	0.0	0.0		
08/14/2013	14:22:56	0.0	0.0	0.0	0.0		
08/14/2013	14:23:26	0.0	0.0	0.0	0.0		
08/14/2013	14:23:56	0.0	0.0	0.0	0.0		
08/14/2013	14:24:26	0.0	0.0	0.0	0.0		
08/14/2013	14:24:56	0.0	0.0	0.0	0.0		
08/14/2013	14:25:26	0.0	0.0	0.0	0.0		
08/14/2013	14:25:56	0.0	0.0	0.0	0.0		
08/14/2013	14:26:26	0.0	0.0	0.0	0.0		
08/14/2013	14:26:56	0.0	0.0	0.0	0.0		
08/14/2013	14:27:26	0.0	0.0	0.0	0.0		
08/14/2013	14:27:56	0.0	0.0	0.0	0.0		
08/14/2013	14:28:26	0.0	0.0	0.0	0.0		
08/14/2013	14:28:56	0.0	0.0	0.0	0.0		
08/14/2013	14:29:26	0.0	0.0	0.0	0.0		
08/14/2013	14:29:56	0.0	0.0	0.0	0.0		
08/14/2013	14:30:26	0.0	0.0	0.0	0.0		
08/14/2013	14:30:56	0.0	0.0	0.0	0.0		
08/14/2013	14:31:26	0.0	0.0	0.0	0.0		
08/14/2013	14:31:56	0.0	0.0	0.0	0.0		
08/14/2013	14:32:26	0.0	0.0	0.0	0.0		
08/14/2013	14:32:56	0.0	0.0	0.0	0.0		
08/14/2013	14:33:26	0.0	0.0	0.0	0.0		
08/14/2013	14:33:56	0.0	0.0	0.0	0.0		
08/14/2013	14:34:26	0.0	0.0	0.0	0.0		
08/14/2013	14:34:56	0.0	0.0	0.0	0.0		
08/14/2013	14:35:26	0.0	0.0	0.0	0.0		
08/14/2013	14:35:56	0.0	0.0	0.0	0.0		
08/14/2013	14:36:26	0.0	0.0	0.0	0.0		
08/14/2013	14:36:56	0.0	0.0	0.0	0.0		
08/14/2013	14:37:26	0.0	0.0	0.0	0.0		
08/14/2013	14:37:56	0.0	0.0	0.0	0.0		
08/14/2013	14:38:26	0.0	0.0	0.0	0.0		
08/14/2013	14:38:56	0.0	0.0	0.0	0.0		
08/14/2013	14:39:26	0.0	0.0	0.0	0.0		
08/14/2013	14:39:56	0.0	0.0	0.0	0.0		
08/14/2013	14:40:26	0.0	0.0	0.0	0.0		
08/14/2013	14:40:56	0.0	0.0	0.0	0.0		
08/14/2013	14:41:26	0.0	0.0	0.0	0.0		
08/14/2013	14:41:56	0.0	0.0	0.0	0.0		
08/14/2013	14:42:26	0.0	0.0	0.0	0.0		
08/14/2013	14:42:56	0.0	0.0	0.0	0.0		
08/14/2013	14:43:26	0.0	0.0	0.0	0.0		
08/14/2013	14:43:56	0.0	0.0	0.0	0.0		
08/14/2013	14:44:26	0.0	0.0	0.0	0.0		
08/14/2013	14:44:56	0.0	0.0	0.0	0.0		
08/14/2013	14:45:26	0.0	0.0	0.0	0.0		
08/14/2013	14:45:56	0.0	0.0	0.0	0.0		
08/14/2013	14:46:26	0.0	0.0	0.0	0.0		
08/14/2013	14:46:56	0.0	0.0	0.0	0.0		
08/14/2013	14:47:26	0.0	0.0	0.0	0.0		

Well			Field		Job Start	Customer	Job Number
SGU 8505-24 8505-24			Story Gultch		Aug/14/2013	Encana	CAIO-00682/ CAI
Date	Time 24-hr clock	Treating Pressure PSI	Flow Rate B/M	Density LB/G	Volume BBL	Message	
08/14/2013	14:48:26	0.0	0.0	0.0	0.0		
08/14/2013	14:48:56	0.0	0.0	0.0	0.0		
08/14/2013	14:49:26	0.0	0.0	0.0	0.0		
08/14/2013	14:49:56	0.0	0.0	0.0	0.0		
08/14/2013	14:50:26	0.0	0.0	0.0	0.0		
08/14/2013	14:50:56	0.0	0.0	0.0	0.0		
08/14/2013	14:51:26	0.0	0.0	0.0	0.0		
08/14/2013	14:51:56	0.0	0.0	0.0	0.0		
08/14/2013	14:52:26	0.0	0.0	0.0	0.0		
08/14/2013	14:52:56	0.0	0.0	0.0	0.0		
08/14/2013	14:53:26	0.0	0.0	0.0	0.0		
08/14/2013	14:53:56	0.0	0.0	0.0	0.0		
08/14/2013	14:54:26	0.0	0.0	0.0	0.0		
08/14/2013	14:54:56	0.0	0.0	0.0	0.0		
08/14/2013	14:55:26	0.0	0.0	0.0	0.0		
08/14/2013	14:55:56	0.0	0.0	0.0	0.0		
08/14/2013	14:56:26	0.0	0.0	0.0	0.0		
08/14/2013	14:56:56	0.0	0.0	0.0	0.0		
08/14/2013	14:57:26	0.0	0.0	0.0	0.0		
08/14/2013	14:57:56	0.0	0.0	0.0	0.0		
08/14/2013	14:58:26	0.0	0.0	0.0	0.0		
08/14/2013	14:58:56	0.0	0.0	0.0	0.0		
08/14/2013	14:59:26	0.0	0.0	0.0	0.0		
08/14/2013	14:59:56	0.0	0.0	0.0	0.0		
08/14/2013	15:00:26	0.0	0.0	0.0	0.0		
08/14/2013	15:00:56	0.0	0.0	0.0	0.0		
08/14/2013	15:01:26	0.0	0.0	0.0	0.0		
08/14/2013	15:01:56	0.0	0.0	0.0	0.0		
08/14/2013	15:02:26	0.0	0.0	0.0	0.0		
08/14/2013	15:02:56	0.0	0.0	0.0	0.0		
08/14/2013	15:03:26	0.0	0.0	0.0	0.0		
08/14/2013	15:03:56	0.0	0.0	0.0	0.0		
08/14/2013	15:04:26	0.0	0.0	0.0	0.0		
08/14/2013	15:04:56	0.0	0.0	0.0	0.0		
08/14/2013	15:05:26	0.0	0.0	0.0	0.0		
08/14/2013	15:05:56	0.0	0.0	0.0	0.0		
08/14/2013	15:06:26	0.0	0.0	0.0	0.0		
08/14/2013	15:06:56	0.0	0.0	0.0	0.0		
08/14/2013	15:07:26	0.0	0.0	0.0	0.0		
08/14/2013	15:07:56	0.0	0.0	0.0	0.0		
08/14/2013	15:08:26	0.0	0.0	0.0	0.0		
08/14/2013	15:08:56	0.0	0.0	0.0	0.0		
08/14/2013	15:09:26	0.0	0.0	0.0	0.0		
08/14/2013	15:09:56	0.0	0.0	0.0	0.0		
08/14/2013	15:10:26	0.0	0.0	0.0	0.0		
08/14/2013	15:10:56	0.0	0.0	0.0	0.0		
08/14/2013	15:11:26	0.0	0.0	0.0	0.0		
08/14/2013	15:11:56	0.0	0.0	0.0	0.0		
08/14/2013	15:12:26	0.0	0.0	0.0	0.0		
08/14/2013	15:12:56	0.0	0.0	0.0	0.0		
08/14/2013	15:13:26	0.0	0.0	0.0	0.0		
08/14/2013	15:13:56	0.0	0.0	0.0	0.0		
08/14/2013	15:14:26	0.0	0.0	0.0	0.0		
08/14/2013	15:14:56	0.0	0.0	0.0	0.0		

Well SGU 8505-24 8505-24			Field Story Gultch		Job Start Aug/14/2013	Customer Encana	Job Number CAIO-00682/ CAI
Date	Time 24-hr clock	Treating Pressure PSI	Flow Rate B/M	Density LB/G	Volume BBL	Message	
08/14/2013	15:15:56	0.0	0.0	0.0	0.0		
08/14/2013	15:16:26	0.0	0.0	0.0	0.0		
08/14/2013	15:16:56	0.0	0.0	0.0	0.0		
08/14/2013	15:17:26	0.0	0.0	0.0	0.0		
08/14/2013	15:17:56	0.0	0.0	0.0	0.0		
08/14/2013	15:18:26	0.0	0.0	0.0	0.0		
08/14/2013	15:18:56	0.0	0.0	0.0	0.0		
08/14/2013	15:19:26	0.0	0.0	0.0	0.0		
08/14/2013	15:19:56	0.0	0.0	0.0	0.0		
08/14/2013	15:20:26	0.0	0.0	0.0	0.0		
08/14/2013	15:20:56	0.0	0.0	0.0	0.0		
08/14/2013	15:21:26	0.0	0.0	0.0	0.0		
08/14/2013	15:21:56	0.0	0.0	0.0	0.0		
08/14/2013	15:22:26	0.0	0.0	0.0	0.0		
08/14/2013	15:22:56	0.0	0.0	0.0	0.0		
08/14/2013	15:23:26	0.0	0.0	0.0	0.0		
08/14/2013	15:24:26	0.0	0.0	0.0	0.0		
08/14/2013	15:24:56	0.0	0.0	0.0	0.0		
08/14/2013	15:25:26	0.0	0.0	0.0	0.0		
08/14/2013	15:25:56	0.0	0.0	0.0	0.0		
08/14/2013	15:26:26	0.0	0.0	0.0	0.0		
08/14/2013	15:26:56	0.0	0.0	0.0	0.0		
08/14/2013	15:27:26	0.0	0.0	0.0	0.0		
08/14/2013	15:27:56	0.0	0.0	0.0	0.0		
08/14/2013	15:28:26	0.0	0.0	0.0	0.0		
08/14/2013	15:28:56	0.0	0.0	0.0	0.0		
08/14/2013	15:29:26	0.0	0.0	0.0	0.0		
08/14/2013	15:29:56	0.0	0.0	0.0	0.0		
08/14/2013	15:30:26	0.0	0.0	0.0	0.0		
08/14/2013	15:30:56	0.0	0.0	0.0	0.0		
08/14/2013	15:31:26	0.0	0.0	0.0	0.0		
08/14/2013	15:31:56	0.0	0.0	0.0	0.0		
08/14/2013	15:32:26	0.0	0.0	0.0	0.0		
08/14/2013	15:32:56	0.0	0.0	0.0	0.0		
08/14/2013	15:33:26	0.0	0.0	0.0	0.0		
08/14/2013	15:33:56	0.0	0.0	0.0	0.0		
08/14/2013	15:34:26	0.0	0.0	0.0	0.0		
08/14/2013	15:34:56	0.0	0.0	0.0	0.0		
08/14/2013	15:35:26	0.0	0.0	0.0	0.0		
08/14/2013	15:35:56	0.0	0.0	0.0	0.0		
08/14/2013	15:36:26	0.0	0.0	0.0	0.0		
08/14/2013	15:36:56	0.0	0.0	0.0	0.0		
08/14/2013	15:37:26	0.0	0.0	0.0	0.0		
08/14/2013	15:37:56	0.0	0.0	0.0	0.0		
08/14/2013	15:38:26	0.0	0.0	0.0	0.0		
08/14/2013	15:38:56	0.0	0.0	0.0	0.0		

<b>Well</b> SGU 8505-24 8505-24	<b>Field</b> Story Gultch	<b>Job Start</b> Aug/14/2013	<b>Customer</b> Encana	<b>Job Number</b> CAIO-00682/ CAI
------------------------------------	------------------------------	---------------------------------	---------------------------	--------------------------------------

## Post Job Summary

Average Pump Rates, bbl/min					Volume of Fluid Injected, bbl			
<b>Slurry</b> 0.0	<b>N2</b>	<b>Mud</b> 0.0	<b>Maximum Rate</b> 0.0	<b>Total Slurry</b> 0.0	<b>Mud</b> 0.0	<b>Spacer</b> 0.0	<b>N2</b>	
Treating Pressure Summary, psi					Breakdown Fluid			
<b>Maximum</b> 0	<b>Final</b> 0	<b>Average</b> 0	<b>Bump Plug to</b>	<b>Breakdown</b>	<b>Type</b>	<b>Volume</b> 185.0 bbl	<b>Density</b> 15.80 lb/gal	
<b>Avg. N2 Percent</b> %	<b>Designed Slurry Volume</b> bbl	<b>Displacement</b> 0.0 bbl	<b>Mix Water Temp</b> degF	<b>Cement Circulated to Surface?</b> <input checked="" type="checkbox"/>		<b>Volume</b> bbl		
				<b>Washed Thru Perfs</b> <input type="checkbox"/>		<b>To</b> ft		
<b>Customer or Authorized Representative</b> Ira Cox			<b>Schlumberger Supervisor</b> Travis Willardson/ C Fairbrook			<b>Circulation Lost</b> <input type="checkbox"/>	<b>Job Completed</b> <input checked="" type="checkbox"/>	
						-	-	