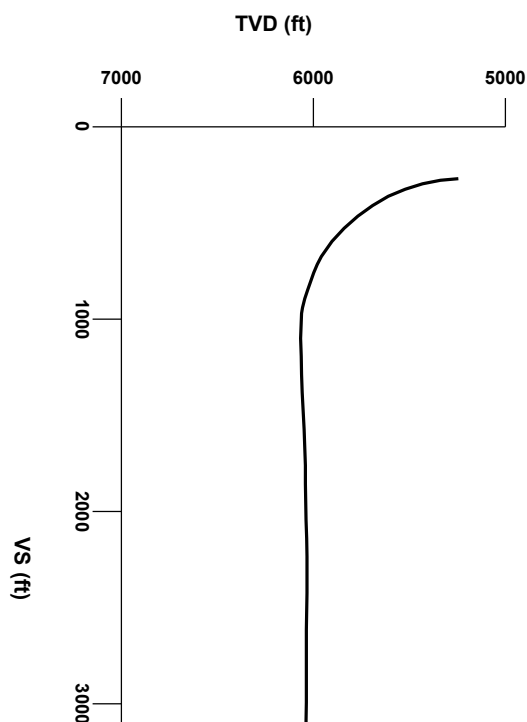
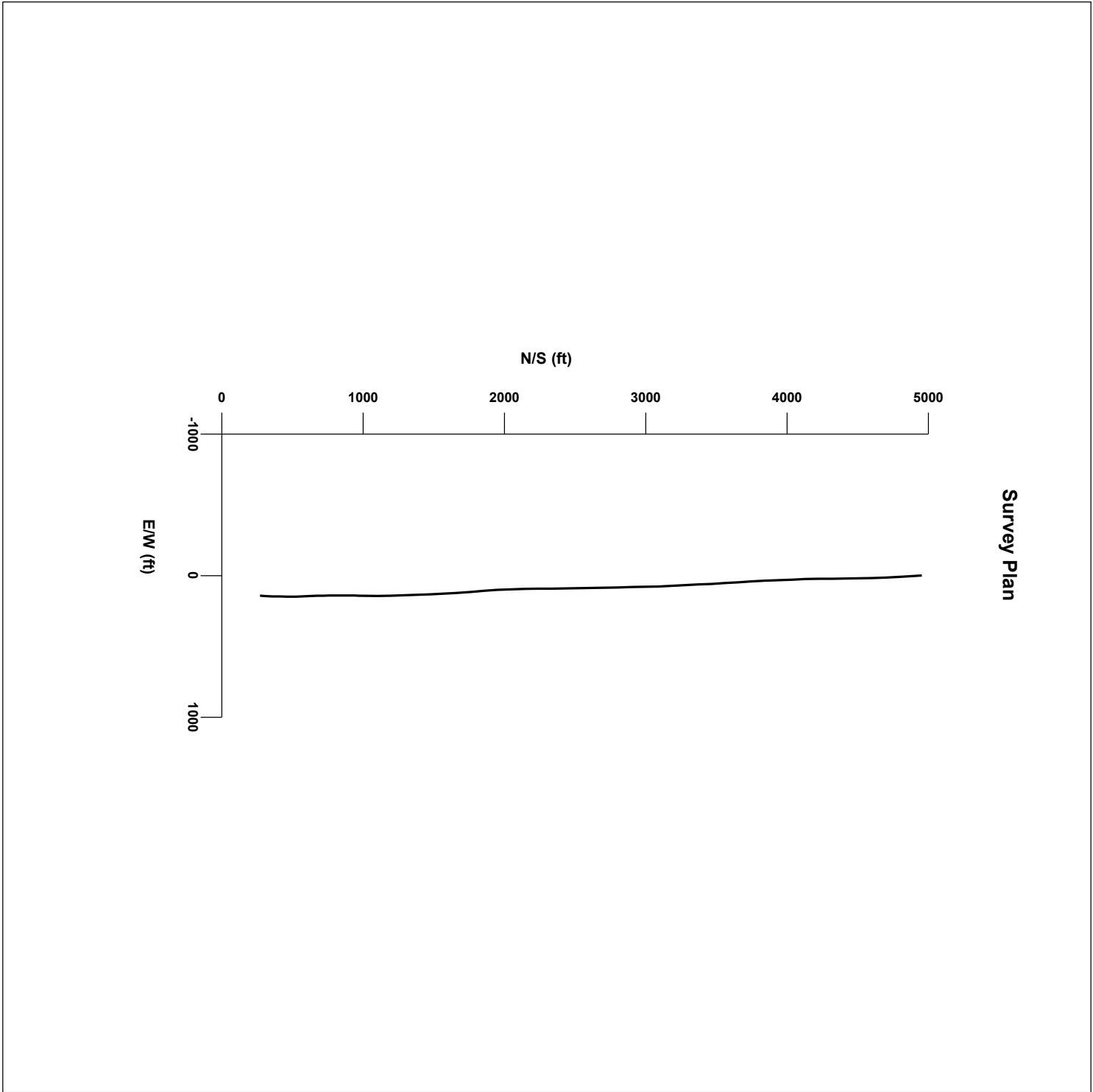
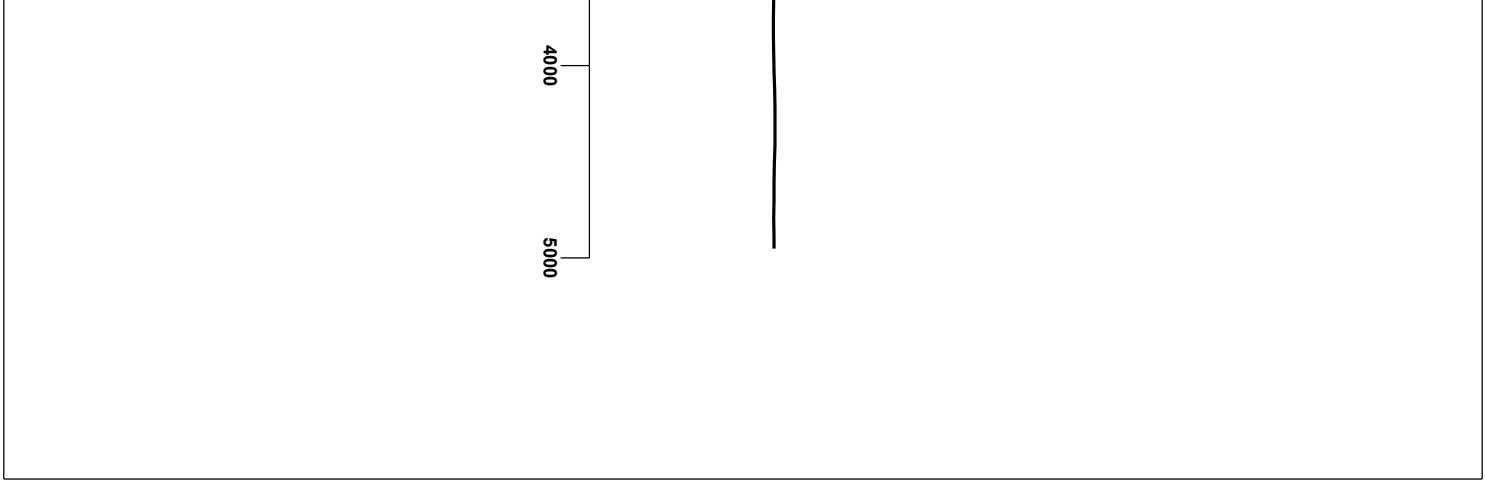


LOG created using Lplot VH Version 3.0, May 25, 2013, Copyright (C) 1999-2009 Pason Systems Corp.

OPERATOR: NOBLE ENERGY INC
WELL: TIMBRO LC13-76HN
LOCATION: SEC 24 T9N R59W
COUNTY: WELD
STATE: COLORADO
SPOT: 280' FNL; 1800' FWL
ELEVATION: 4860' GL; 4884' KB
FIELD: WILDCAT
SPUD DATE: 5/18/2013
TD DATE: 5/24/2013
DATES LOGGED: 5/20/2013 -5/24/2013
DEPTHS LOGGED: 5300' - 10420' MD
LOGGERS: LAURA KELLOGG; CHRISTIAN V.; CONOR P.
DRILLING FLUID: LSND
DRILLING RIG: H&P 273
API: 05-123-36657
LOG TYPE: HORIZONTAL
SCALE: 1:240 (5 inches per 100 feet)
REMARKS: WELLSITE GEOLOGICAL SERVICES
 PROVIDED BY COLUMBINE LOGGING INC.



Survey Elevation



LITHOLOGIES

Chalk

Marl

Silty Shale

ENGINEERING SYMBOLS

Casing

Connection Gas

Casing

Midnight Depth

Connection

GAS

0

UNITS

2000

C1

0

PPM

200000

C2

0

PPM

200000

C3

0

PPM

200000

C4

0

PPM

200000

ROP

0

FT/HR

500

COL UMBINE LOGGING INC.
RIGGED UP ON 05/19/2013
MANNED 2-PERSON LOGGING
WITH BLOODHOUND GAS
CHROMATOGRAPH UNIT #0540
COL UMBINE BEGAN LOGGING
ON 05/19/2013

BEGAN DRILLING CURVE
@ 07:00 AM 05/20/2013

DEPTH
(FEET)

5150

60

70

80

90

5200

10

20

30

40

50

60

70

80

90

5300

803u

983u

CUTTINGS LITHOLOGY

5200

50

API

250

5200

50

API

250

WT IN 9.7/ OUT 9.7

VIS IN 34/ OUT 34

MD 5264'

INC 1.5°

AZM 35.5°

TVD 5245.7'

Acetone was used as the cutting agent with the dimple filled to the rim

The ratings are based on 7 descriptors: None, Slight trace, Trace, Fair, Moderate, Good, and Excellent. The descriptor used is based on the loggers observations and best judgment of brilliance, color and longevity of the cut.


SLT VSH: lt gy - gy, sblky - sply, mod firm, gt - silty lex, arg cnt, non calc

Oil Shows

7000

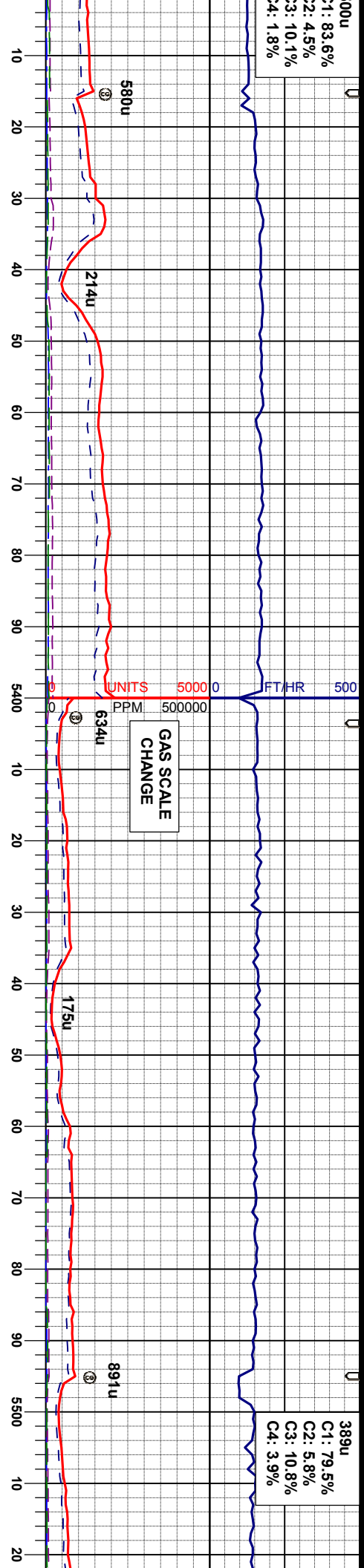
7000

Sample Photos



1: 83.6%
2: 4.5%
3: 10.1%
4: 1.8%

389u
C1: 79.5%
C2: 5.8%
C3: 10.8%
C4: 3.9%



MD 5356'
INC 7.5°
AZM 4.2°
TVD 5339.3'

WT IN 9.95/ OUT 9.95
VIS IN 32/ OUT 32

MD 5453'
INC 14.8°
AZM 3.8°
TVD 5432.5'

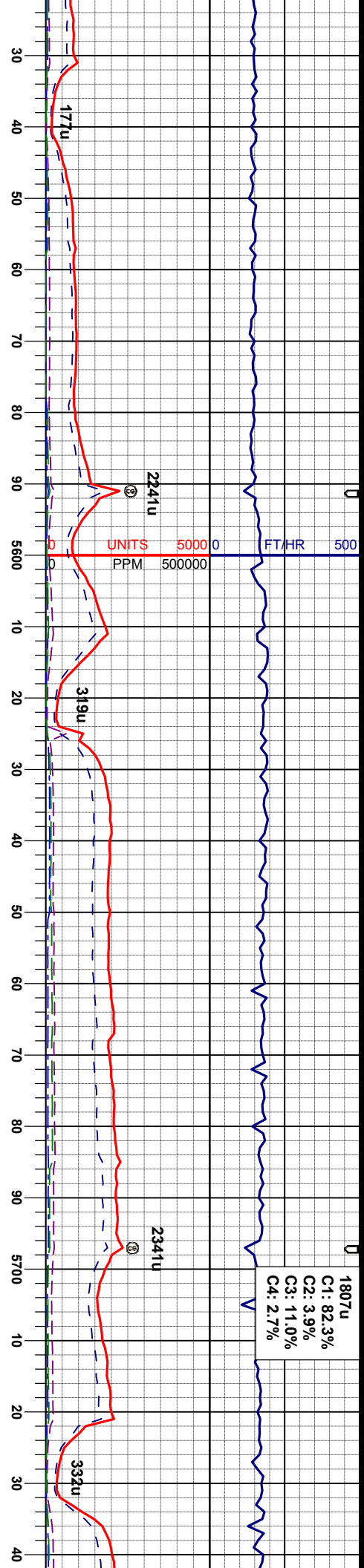
SLTYSH: lt gy - gy, sbblky - sbply, mod
firm, gt - silty tex, arg cnt, non calc

SLTYSH: lt gy - gy, sbblky - sbply, mod
firm, gt - silty tex, arg cnt, non calc

SLTYSH: lt gy - gy, sbblky - sbply, mod
firm, gt - silty tex, arg cnt, non calc

SLTYSH: lt gy - gy, sbblky - sbply, mod
firm, gt - silty tex, arg cnt, non calc





1807u
C1: 82.3%
C2: 3.9%
C3: 11.0%
C4: 2.7%

MD 5548'
INC 20.3°
AZM 3.1°
TVD 5523.0'

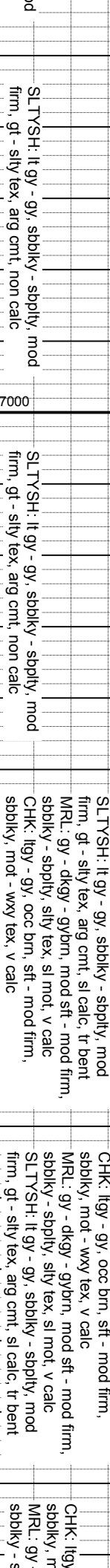
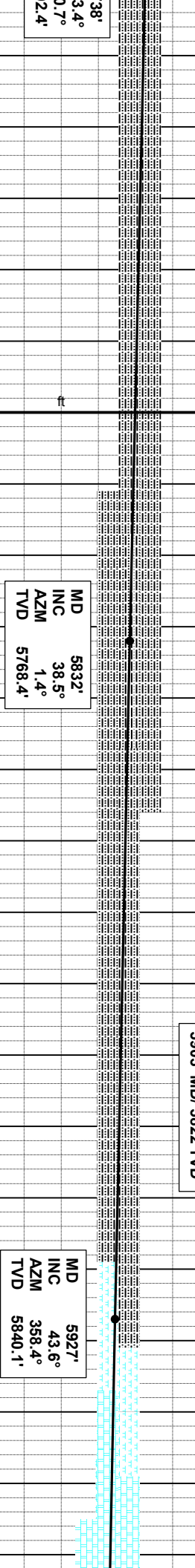
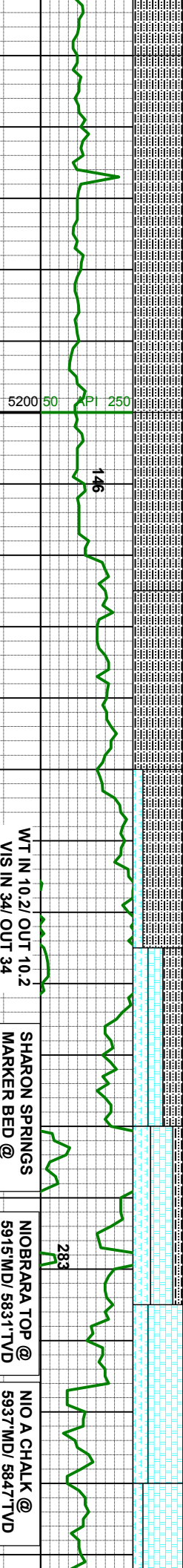
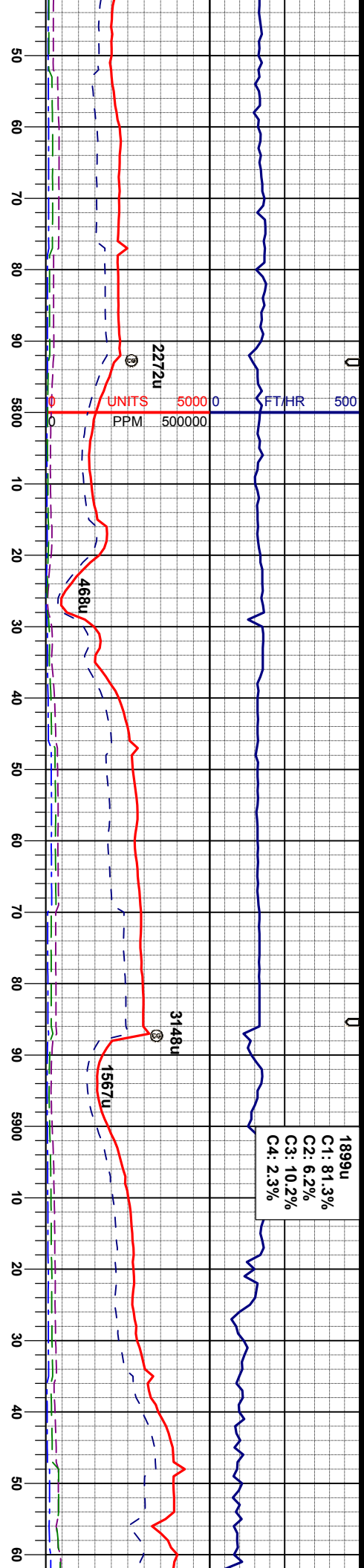
MD 5643'
INC 26.6°
AZM 2.2°
TVD 5610.1'

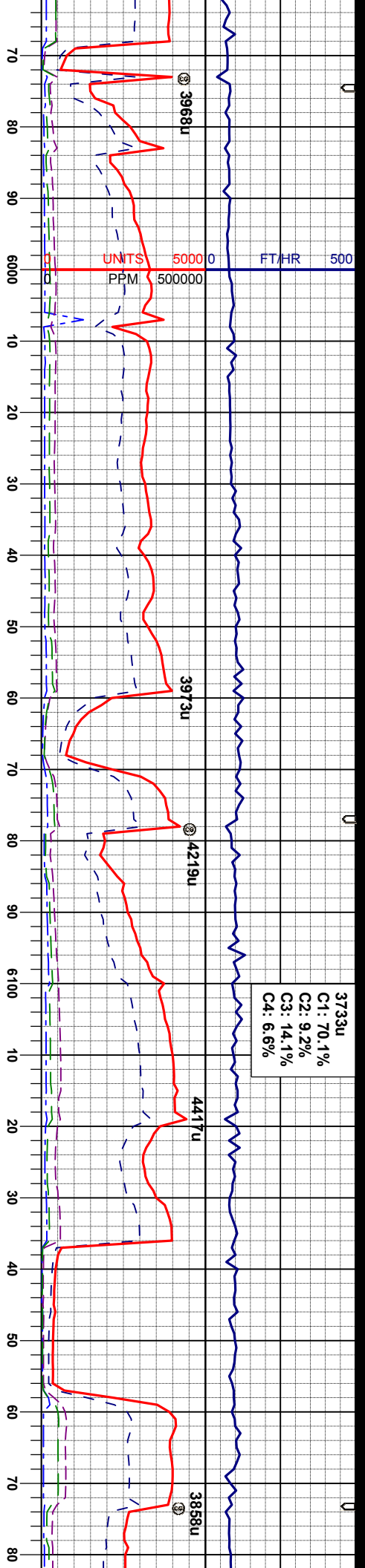
MD 5733'
INC 3.3°
AZM 56.6°
TVD 5695.0'

WT IN 10.1/ OUT 10.1
VIS IN 32/ OUT 32

SLTYSH: lt gy - gy, sbblky - sbply, mod
firm, gt - silty tex, arg cnt, non calc







NIO A MARL @
5979MD/5875TVD

5200 50 API 250

WT IN 10.4/ OUT 10.4
VIS IN 34/ OUT 34

NIO B CHALK @
6093MD/5945TVD

WT IN 10.50/ OUT 10.50
VIS IN 33/ OUT 33

MD 6022'
INC 50.7°
AZM 357.7°
TVD 5904.6'

MD 6117'
INC 59.6°
AZM 357.7°
TVD 5958.89'

MD 6164'
INC 64.1°
AZM 358.4°
TVD 5981.06'

- gy, occ brn, sft - mod firm,
- wxy tex, v calc
dkgy - gybrn, mod sft - mod firm,
sblky, sily tex, sl mot, v calc

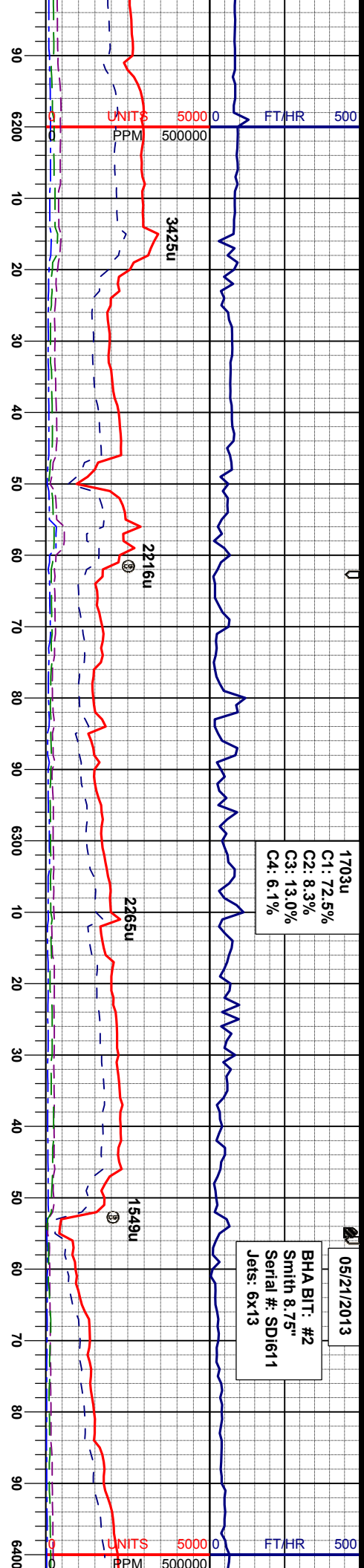
MR: gy - dkgy, mod sft - mod firm, sblky -
sblky, sily tex, sl mot, v calc
CHK: lgy - gy, occ brn, sft - mod firm,
sblky, mot - wxy tex, v calc

MR: gy - dkgy, mod sft - mod firm, sblky -
sblky, sily tex, sl mot, v calc
CHK: lgy - gy, sft - mod firm, sblky, sl
mot, rthy - wxy tex, v calc, tr pyr

CHK: lgy - gy, sft - mod firm, sblky, sl
mot, rthy - wxy tex, v calc, tr pyr
MR: gy - dkgy, mod sft - mod firm, sblky -
sblky, sily tex, sl mot, v calc

MR: gy - dkgy, mod sft - mo
sblky, sily tex, sl mot, v calc,
strg, abnt calc incl
CHK: lgy - gy, sft - mod firm,
mot, rthy - wxy tex, v calc





NIO B MARL @
6178' MD/ 5987' TVD

MD 6211'
INC 68.6°
AZM 359.2°
TVD 5999.91'

WT IN 10.70/ OUT 10.70
VIS IN 40/ OUT 40

MD 6306'
INC 71.8°
AZM 0.3°
TVD 6032.09'

WT IN 10.50+ / OUT 10.40
VIS IN 43/ OUT 46

MD 6354'
INC 72.3°
AZM 0.3°
TVD 6046.88'

WT IN 10.50/ OUT 10.50
VIS IN 40/ OUT 40

MD 6050'
INC 60.0°
AZM 60.0°
TVD 6050.00'

MRU: gy - dkgy, mod sft - mod firm, sbblky -
sbply, silty tex, sl mot, v calc, tr bent w/ pyr
strg, abnt calc incl, tr inoc
CHK: ltyg - gy, sft - mod firm, sbblky, sl
mot, rthy - wxy tex, v calc

MRU: gy - dkgy, mod sft - mod firm, sbblky -
sbply, silty tex, sl mot, v calc, tr bent w/ pyr
strg, abnt calc incl, tr inoc
CHK: ltyg - gy, sft - mod firm, sbblky, sl
mot, rthy - wxy tex, v calc

MRU: gy - dkgy, mod sft - mod firm, sbblky -
sbply, silty tex, sl mot, v calc, tr bent w/ pyr
strg
CHK: ltyg - gy, sft - mod firm, sbblky, sl
mot, rthy - wxy tex, v calc

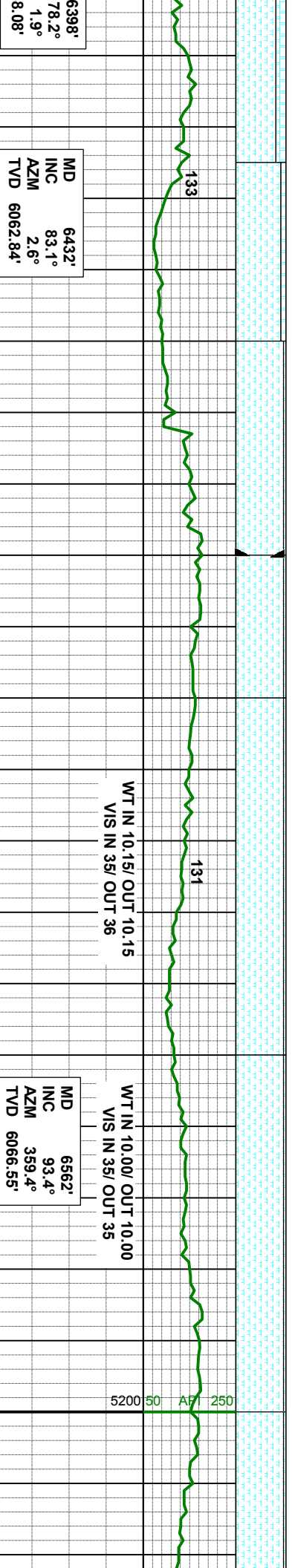
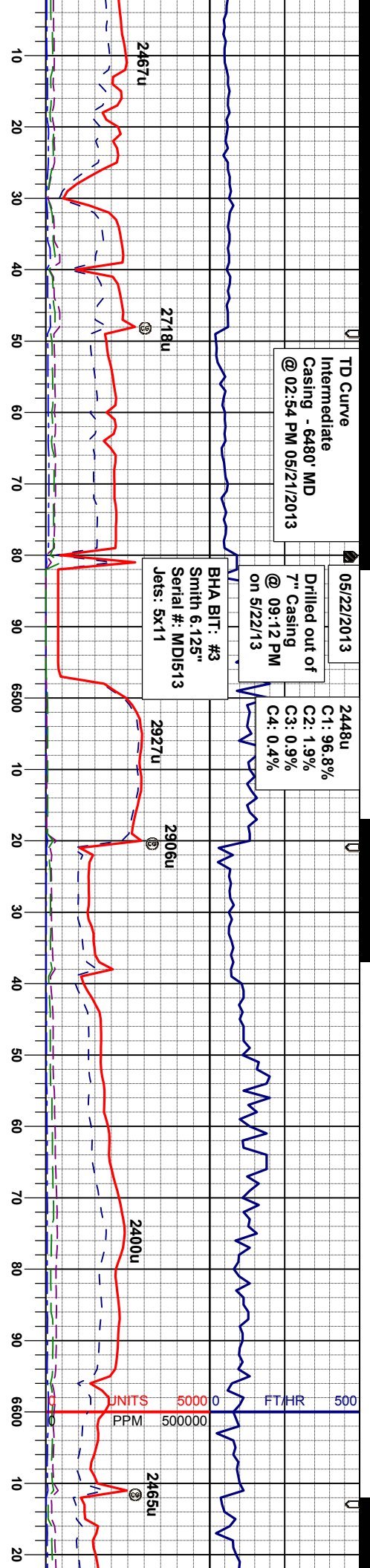


TD Curve
Intermediate
Casing - 6480' MD
@ 02:54 PM 05/21/2013

05/22/2013
Drilled out of
7" Casing
@ 09:12 PM
on 5/22/13

2448u
C1: 96.8%
C2: 1.9%
C3: 0.9%
C4: 0.4%

BHA BIT: #3
Smith 6.125"
Serial #: MD1513
Jets: 5x11



MRIL: gy - dkgy, mod sft - mod firm, sbblky - sbply, silty tex, sl mot, v calc, tr bent w/ pyr strg
CHK: lity - gy, sft - mod firm, sbblky, sl mot, rthy - wxy tex, v calc

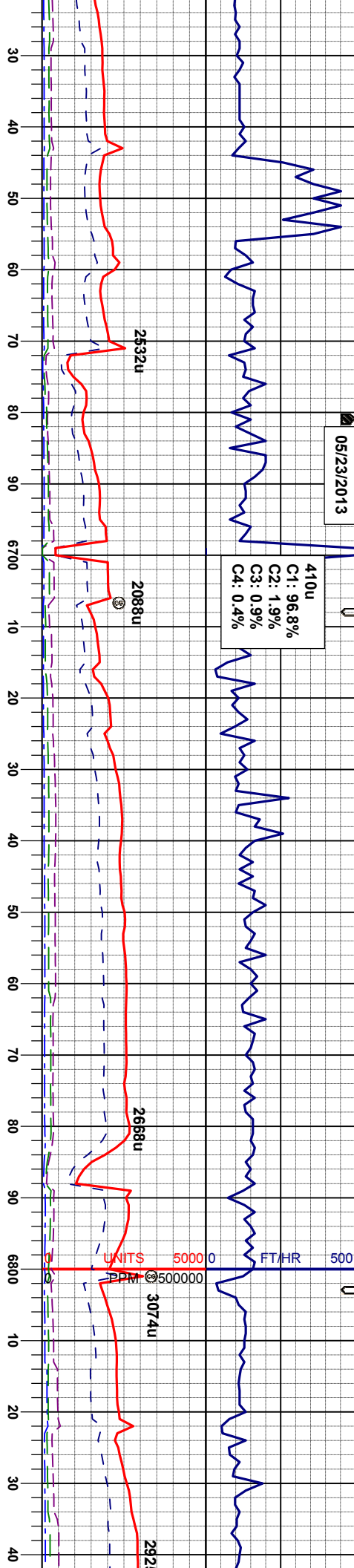
MRIL: gy - dkgy, mod sft - mod firm, sbblky - sbply, silty tex, sl mot, v calc, tr bent w/ pyr strg
CHK: lity - gy, sft - mod firm, sbblky, sl mot, rthy - wxy tex, v calc

MRIL: gy - dkgy, mod sft - mod firm, sbblky - sbply, silty tex, sl mot, v calc, tr bent w/ pyr strg
CHK: lity - gy, sft - mod firm, sbblky, sl mot, rthy - wxy tex, v calc



05/23/2013

410u
C1: 96.8%
C2: 1.9%
C3: 0.9%
C4: 0.4%



WT IN 9.90/ OUT 9.90
VIS IN 34/ OUT 34

MD 6656'
INC 90.7°
AZM 358.5°
TVD 6063.44'

MD 6751'
INC 90.2°
AZM 357.7°
TVD 6062.69'

WT IN 9.90/ OUT 9.90
VIS IN 34/ OUT 34

MD 6751'
INC 90.2°
AZM 357.7°
TVD 6062.69'

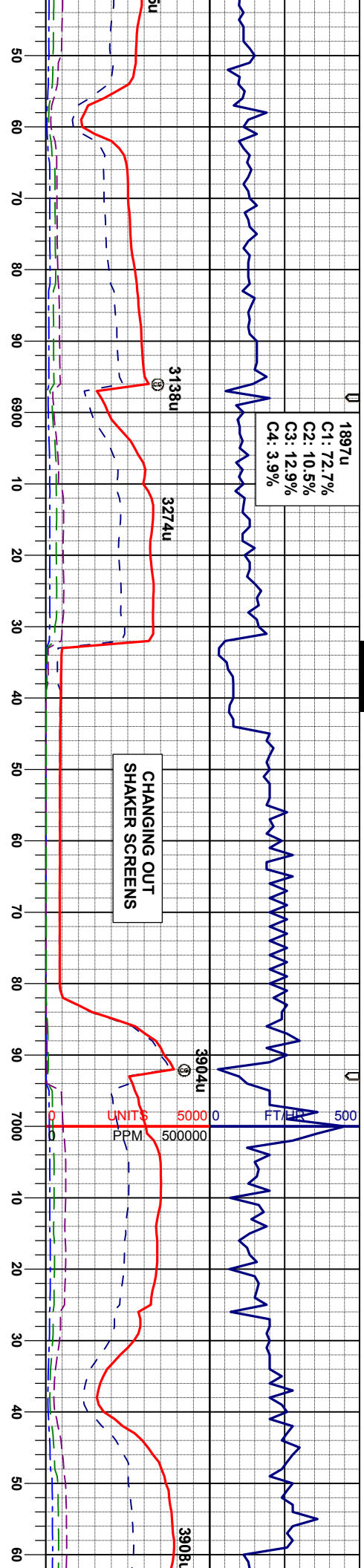
mod sft - mod firm, sbbly -
not, v calc, tr bent w/ pyr
MRU: gy - dkgy, mod sft - mod firm, sbbly -
sbbly, silty tex, sl mot, v calc, tr bent w/ pyr
stg
CHK: lly - gy, sft - mod firm, sbbly, sl
mot, rthy - wxy tex, v calc

MRU: gy - dkgy, mod sft - mod firm, sbbly -
sbbly, silty tex, sl mot, v calc, tr bent w/ pyr
stg, tr inoc
CHK: lly - gy, sft - mod firm, sbbly, sl
mot, rthy - wxy tex, v calc

MRU: gy - dkgy, mod sft - mod firm, sbbly -
sbbly, silty tex, sl mot, v calc, tr bent w/ pyr
stg, tr inoc
CHK: lly - gy, sft - mod firm, sbbly, sl
mot, rthy - wxy tex, v calc

MRU: gy - dkgy, mod sft - mod firm, sbbly -
sbbly, silty tex, sl mot, v calc, tr bent w/ pyr
stg, tr inoc
CHK: lly - gy, sft - mod firm, sbbly, sl
mot, rthy - wxy tex, v calc





T IN 9.90/ OUT 9.90
VIS IN 35/ OUT 35

WT IN 9.90/ OUT 9.90
VIS IN 37/ OUT 37

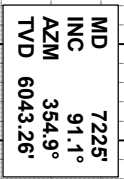
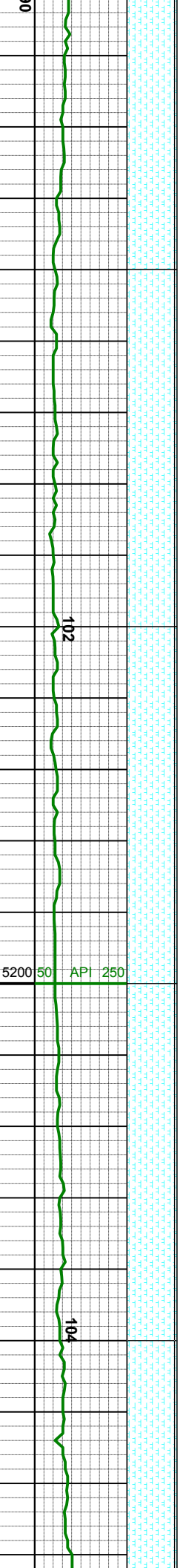
6846'	MD	6941'	MD	7036'
93.2°	INC	93.1°	INC	93.1°
358.0°	AZM	357.3°	AZM	357.1°
6059.88'	TVD	6054.66'	TVD	6049.52'

MRL: gy - dkgy, mod sft - mod firm, sbblky -
sblply, silty tex, sl mot, v calc, tr bent w/ pyr
strg, tr inoc
CHK: lgy - gy, sft - mod firm, sbblky, sl
mot, rthy - wxy tex, v calc

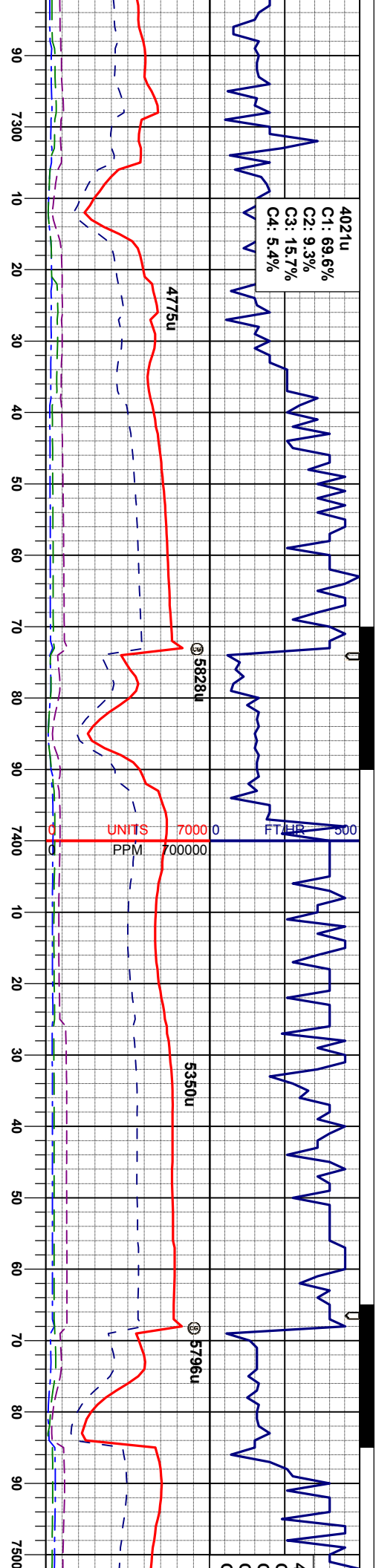
MRL: gy - dkgy, mod sft - mod firm, sbblky -
sblply, silty tex, sl mot, v calc, tr bent w/ pyr
strg
CHK: lgy - gy, sft - mod firm, sbblky, sl
mot, rthy - wxy tex, v calc

MRL: gy - dkgy, mod sft - mod firm, sbblky -
sblply, silty tex, sl mot, v calc, tr bent w/ pyr
strg
CHK: lgy - gy, sft - mod firm, sbblky, sl
mot, rthy - wxy tex, v calc





MRL: gy - dkgy, mod sft - mo
sbply, slty tex, sl mot, v calc,
CHK: ltgy - gy, sft - mod firm,
mot, rthy - wxy tex, v calc



MD 7320'
INC 90.0°
AZM 354.9°
TVD 6042.35'

WT IN 9.90/ OUT 9.90
VIS IN 34/ OUT 34

MD 7415'
INC 91.2°
AZM 357.1°
TVD 6041.35'

WT IN 9.90/ OUT 9.90
VIS IN 36/ OUT 36

d firm, sbblky -
pyr strg
sbblky, sl

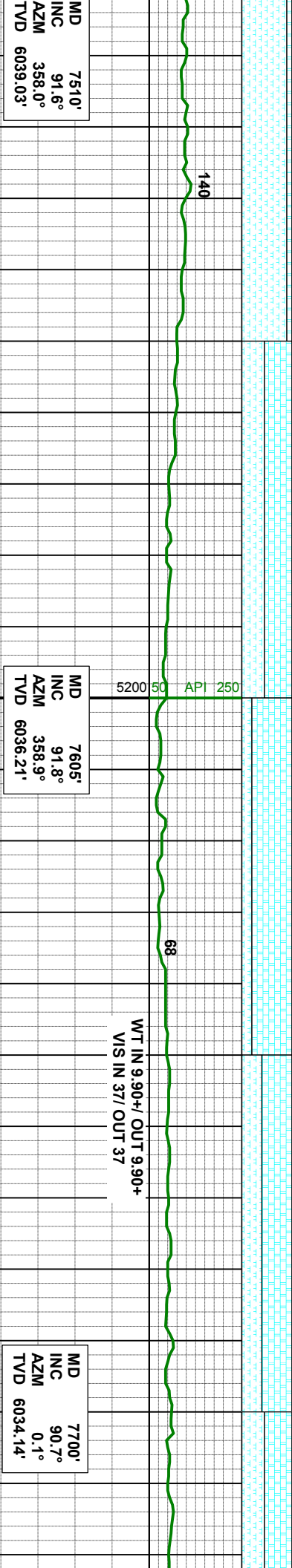
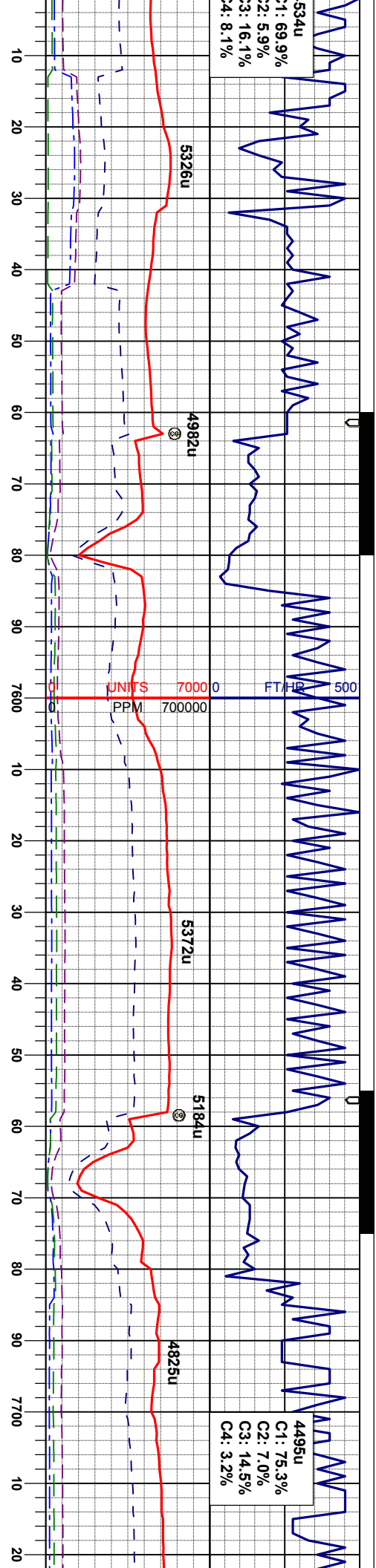
MR.L: gy - dkgy, mod sft - mod firm, sbblky -
sbply, slty tex, sl mot, v calc, pyr strg
CHK: ltyg - gy, sft - mod firm, sbblky, sl
mot, rthy - wxy tex, v calc

MR.L: gy - dkgy, mod sft - mod firm, sbblky -
sbply, slty tex, sl mot, v calc, pyr strg
CHK: ltyg - gy, sft - mod firm, sbblky, sl
mot, rthy - wxy tex, v calc

MR.L: gy - dkgy, mod sft - mod firm, sbblky -
sbply, slty tex, sl mot, v calc, pyr strg
CHK: ltyg - gy, sft - mod firm, sbblky, sl
mot, rthy - wxy tex, v calc

MR.L: gy - dkgy, mod sft - mod firm, sbblky -
sbply, slty tex, sl mot, v calc, pyr strg
CHK: ltyg - gy, sft - mod firm, sbblky, sl
mot, rthy - wxy tex, v calc





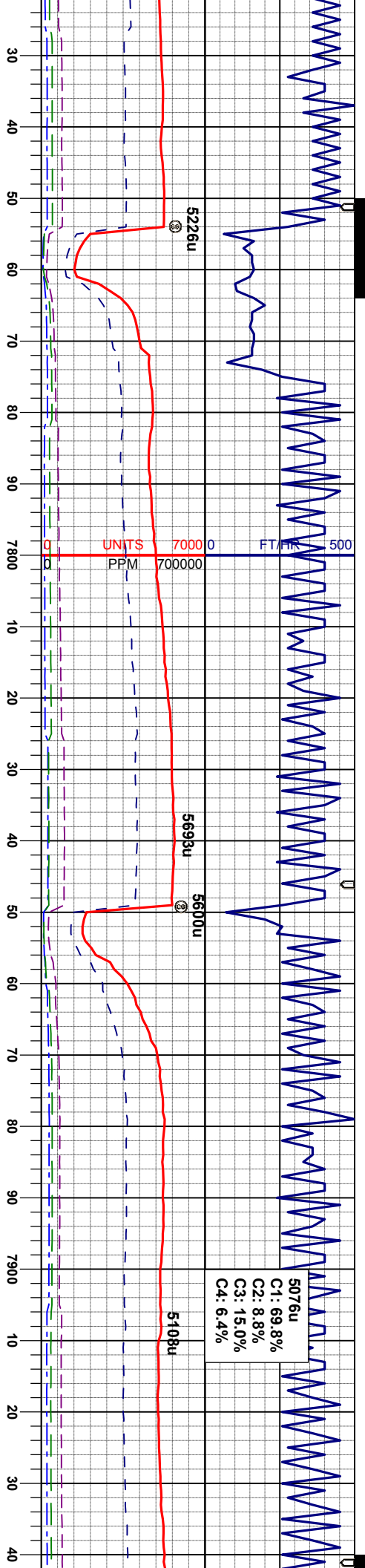
MR.L: gy - dkgy, mod sft - mod firm, sblky -
sblpy, silty tex, sl mot, v calc, pyr strg
CHK: lty - gy, sft - mod firm, sblky, sl
mot, rthy - wxy tex, v calc
MR.L: gy - dkgy, mod sft - mod firm, sblky -
sblpy, silty tex, sl mot, v calc, pyr strg

CHK: lty - gy, sft - mod firm, sblky, sl
mot, rthy - wxy tex, v calc
MR.L: gy - dkgy, mod sft - mod firm, sblky -
sblpy, silty tex, sl mot, v calc, pyr strg

CHK: lty - gy, sft - mod firm, sblky, sl
mot, rthy - wxy tex, v calc
MR.L: gy - dkgy, mod sft - mod firm, sblky -
sblpy, silty tex, sl mot, v calc, pyr strg

CHK: lty - gy, sft - mod firm, sblky, sl
mot, rthy - wxy tex, v calc
MR.L: gy - dkgy, mod sft - mod firm, sblky -
sblpy, silty tex, sl mot, v calc, pyr strg





5076u
C1: 69.8%
C2: 8.8%
C3: 15.0%
C4: 6.4%

WT IN 10.00/ OUT 10.00
VIS IN 36/ OUT 36

MD 7795'
INC 89.5°
AZM 359.1°
TVD 6033.98'

MD 7890'
INC 90.1°
AZM 358.4°
TVD 6034.31'

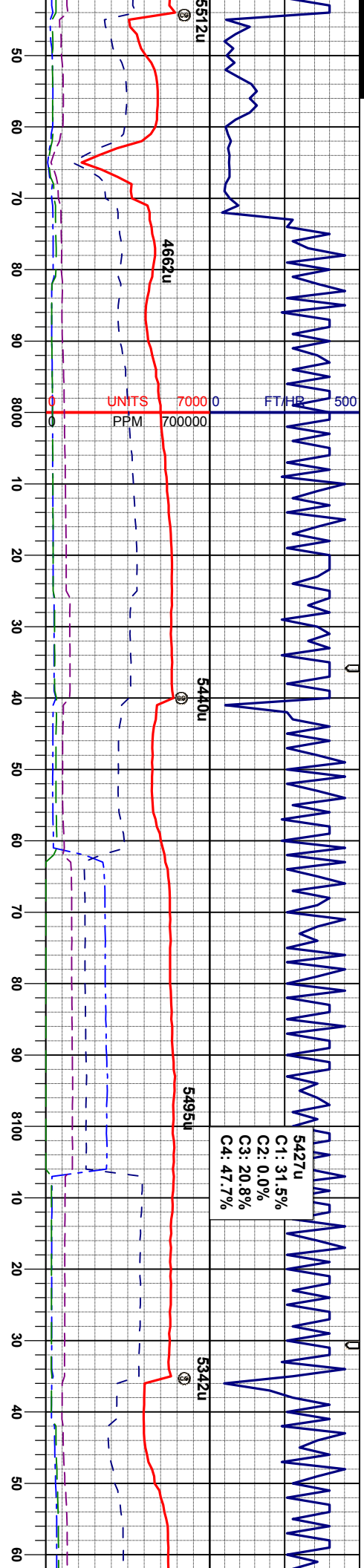
mod firm, sbbkly, sl
v calc
MRL: gy - dkgy, mod sft - mod firm, sbbkly -
sbbkly, slty tex, sl mot, v calc, pyr strg
CHK: lty - gy, sft - mod firm, sbbkly, sl
mot, rthy - wxy tex, v calc

MRL: gy - dkgy, mod sft - mod firm, sbbkly -
sbbkly, slty tex, sl mot, v calc, pyr strg
CHK: lty - gy, sft - mod firm, sbbkly, sl
mot, rthy - wxy tex, v calc

MRL: gy - dkgy, mod sft - mod firm, sbbkly -
sbbkly, slty tex, sl mot, v calc, pyr strg
CHK: lty - gy, sft - mod firm, sbbkly, sl
mot, rthy - wxy tex, v calc

MRL: gy - dkgy, mod sft - mod firm, sbbkly -
sbbkly, slty tex, sl mot, v calc, pyr strg
CHK: lty - gy, sft - mod firm, sbbkly, sl
mot, rthy - wxy tex, v calc





WT IN 10.10/ OUT 10.10
VIS IN 37/ OUT 37

MD 7984'
INC 88.5°
AZM 359.2°
TVD 6035.46'

API 250

106

MD 8079'
INC 89.3°
AZM 359.4°
TVD 6037.28'

271

CHK: lty - gy, sft - mod firm, sbblky, sl
mot, rthy - wxy tex, v calc
MRL: gy - dkgv, mod sft - mod firm, sbblky -
sbply, slty tex, sl mot, v calc, pyr strg

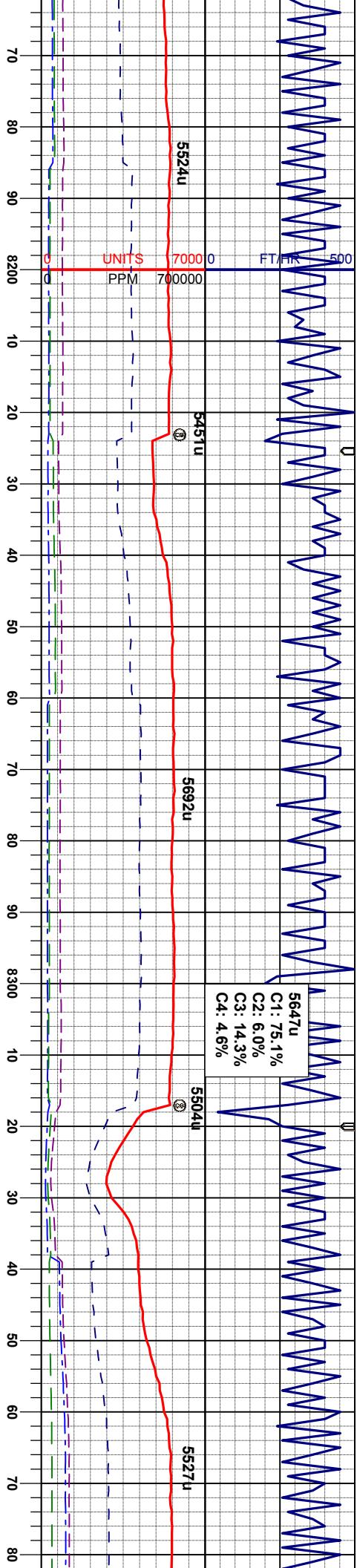
CHK: lty - gy, sft - mod firm, sbblky, sl
mot, rthy - wxy tex, v calc
MRL: gy - dkgv, mod sft - mod firm, sbblky -
sbply, slty tex, sl mot, v calc, pyr strg

CHK: lty - gy, sft - mod firm, sbblky, sl
mot, rthy - wxy tex, v calc
MRL: gy - dkgv, mod sft - mod firm, sbblky -
sbply, slty tex, sl mot, v calc, pyr strg

CHK: lty - gy, sft - mod firm, sbblky, sl
mot, rthy - wxy tex, v calc
MRL: gy - dkgv, mod sft - mod firm, sbblky -
sbply, slty tex, sl mot, v calc, pyr strg

CHK: lty - gy, sft - mod firm, sbblky, sl
mot, rthy - wxy tex, v calc
MRL: gy - dkgv, mod sft - mod firm, sbblky -
sbply, slty tex, sl mot, v calc, pyr strg





MD 8174'
INC 90.0°
AZM 358.9°
TVD 6037.86'

MD 8269'
INC 90.5°
AZM 358.9°
TVD 6037.45'

MD 8363'
INC 89.3°
AZM 357.7°
TVD 6037.61'

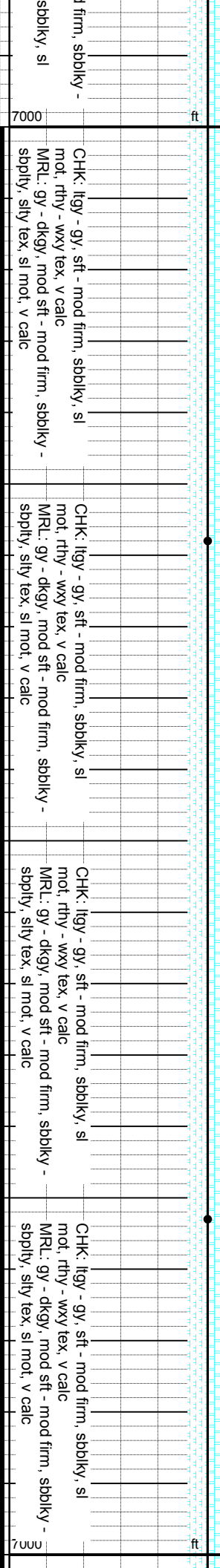
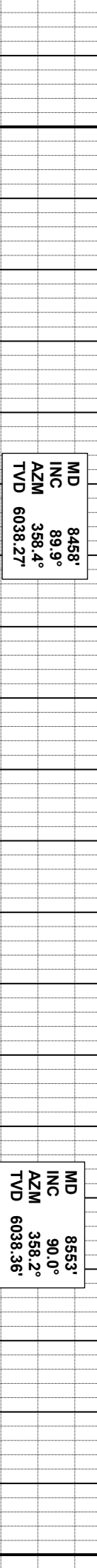
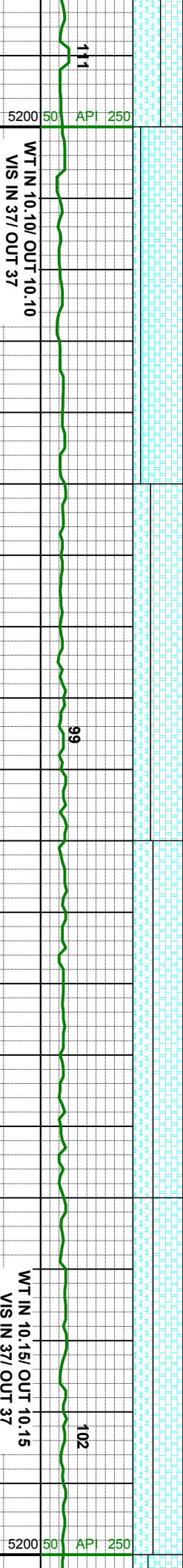
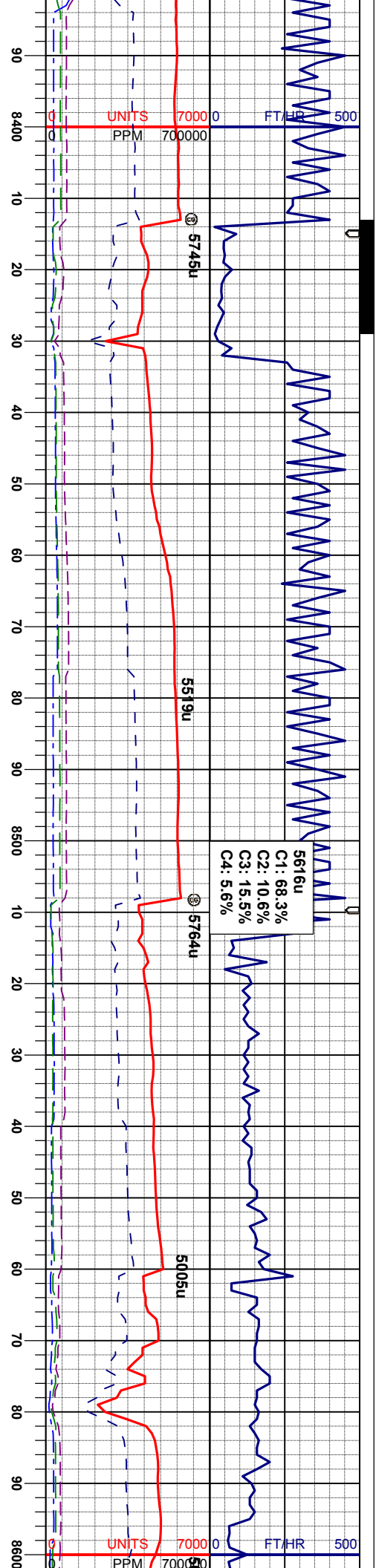
gy, sft - mod firm, sbblky, sl
- wxy tex, v calc
dkgy, mod sft - mod firm, sbblky -
v tex, sl mot, v calc, pyr strg

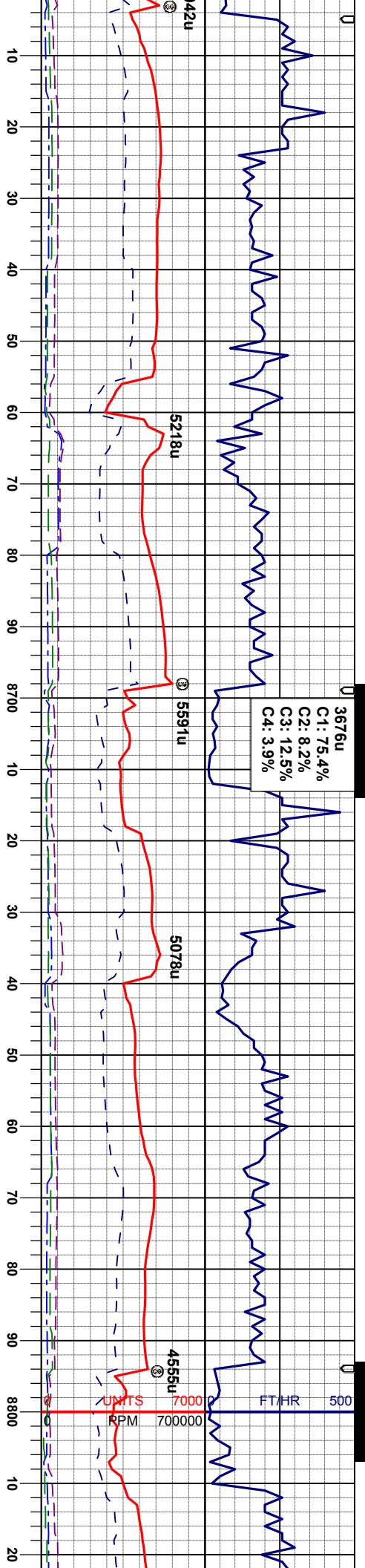
CHK: itgy - gy, sft - mod firm, sbblky, sl
mot, rthy - wxy tex, v calc
MRL: gy - dkgy, mod sft - mod firm, sbblky -
sbply, slty tex, sl mot, v calc

CHK: itgy - gy, sft - mod firm, sbblky, sl
mot, rthy - wxy tex, v calc
MRL: gy - dkgy, mod sft - mod firm, sbblky -
sbply, slty tex, sl mot, v calc

CHK: itgy - gy, sft - mod firm, sbblky, sl
mot, rthy - wxy tex, v calc
MRL: gy - dkgy, mod sft - mod firm, sbblky -
sbply, slty tex, sl mot, v calc

MRL: gy - dkgy, mod sft - mod firm, sbblky, sl
sbply, slty tex, sl mot, v calc
CHK: itgy - gy, sft - mod firm, sbblky, sl
mot, rthy - wxy tex, v calc





MD 8648'
INC 89.4°
AZM 356.6°
TVD 6038.85'

MD 8743'
INC 89.3°
AZM 356.6°
TVD 6039.93'

CHK: lgy - gy, sft - mod firm, sbbiky, sl
mot, rthy - wxy tex, v calc
MRL: gy - dkgy, mod sft - mod firm, sbbiky -
sbbly, silty tex, sl mot, v calc

CHK: lgy - gy, sft - mod firm, sbbiky, sl
mot, rthy - wxy tex, v calc
MRL: gy - dkgy, mod sft - mod firm, sbbiky -
sbbly, silty tex, sl mot, v calc

CHK: lgy - gy, sft - mod firm, sbbiky, sl
mot, rthy - wxy tex, v calc
MRL: gy - dkgy, mod sft - mod firm, sbbiky -
sbbly, silty tex, sl mot, v calc

MRL: gy - dkgy, mod sft - mod firm, sbbiky -
sbbly, silty tex, sl mot, v calc
CHK: lgy - gy, sft - mod firm, sbbiky, sl
mot, rthy - wxy tex, v calc

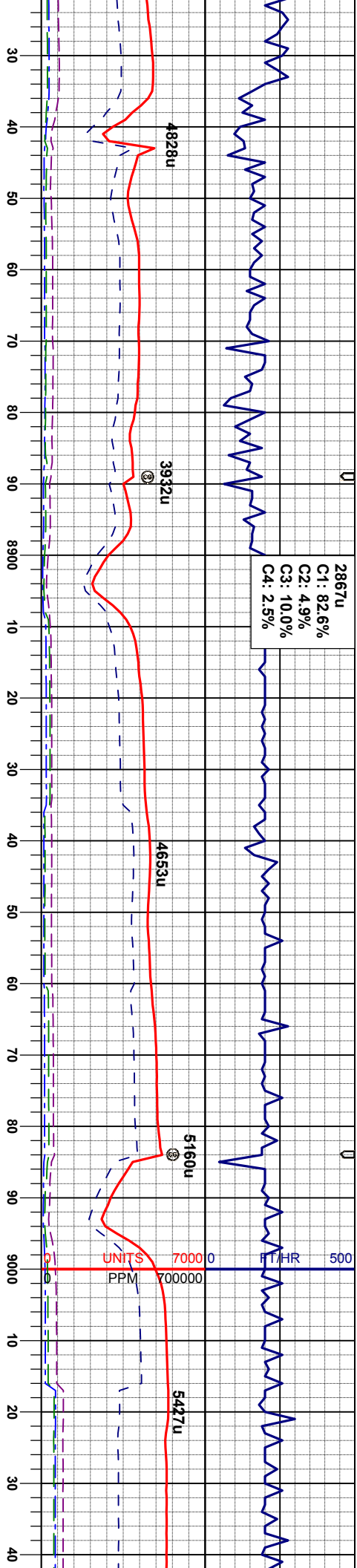
CHK: lgy - gy, sft -
mot, rthy - wxy tex,
MRL: gy - dkgy, mod
sbbly, silty tex, sl n

WT IN 10.10/ OUT 10.10
VIS IN 35/ OUT 35

WT IN 10.30/ OUT 10.10
VIS IN 41/ OUT 42

WT IN 10.20/ OUT 10.
VIS IN 45/ OUT 45





MD 8837'
INC 90.0°
AZM 357.7°
TVD 6040.50'

MD 8932'
INC 90.0°
AZM 357.5°
TVD 6040.50'

MD 9027'
INC 90.2°
AZM 356.3°
TVD 6040.34'

mod firm, sbbiky, sl
v calc
mod sft - mod firm, sbbiky -
mot, v calc

MR.L: gy - dkgy, mod sft - mod firm, sbbiky -
sbbiky, silty tex, sl mot, v calc, tr Inoc
CHK: lgy - gy, sft - mod firm, sbbiky, sl
mot, rthy - wxy tex, v calc

MR.L: gy - dkgy, mod sft - mod firm, sbbiky -
sbbiky, silty tex, sl mot, v calc, tr Inoc
CHK: lgy - gy, sft - mod firm, sbbiky, sl
mot, rthy - wxy tex, v calc

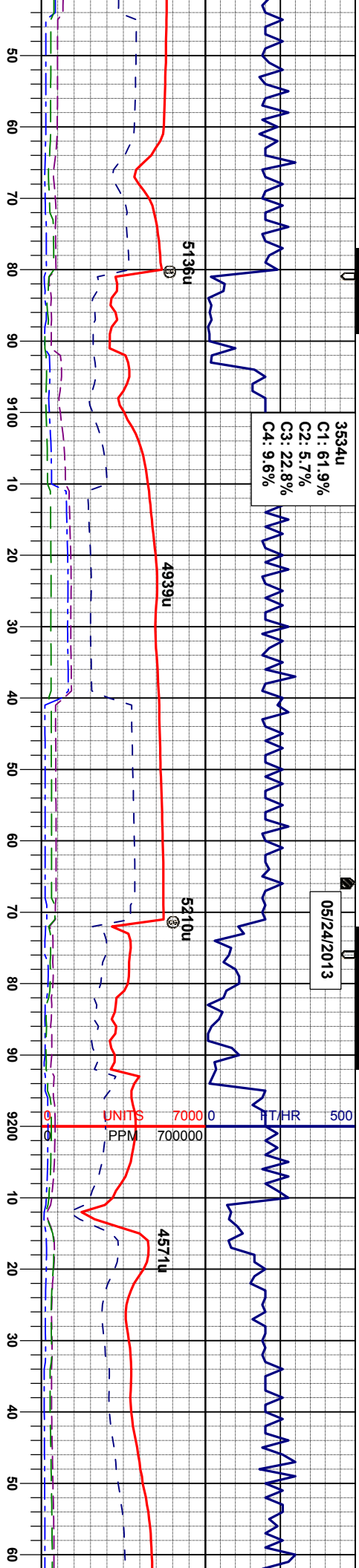
CHK: lgy - gy, sft - mod firm, sbbiky, sl
mot, rthy - wxy tex, v calc
MR.L: gy - dkgy, mod sft - mod firm, sbbiky -
sbbiky, silty tex, sl mot, v calc

CHK: lgy - gy, sft - mod firm, sbbiky, sl
mot, rthy - wxy tex, v calc
MR.L: gy - dkgy, mod sft - mod firm, sbbiky -
sbbiky, silty tex, sl mot, v calc



05/24/2013

3534u
C1: 61.9%
C2: 5.7%
C3: 22.8%
C4: 9.6%



WT IN 10.25/ OUT 10.25
VIS IN 46/ OUT 46

WT IN 10.20/ OUT 10.20
VIS IN 43/ OUT 43

MD 9122'
INC 89.2°
AZM 356.3°
TVD 6040.84'

MD 9217'
INC 89.4°
AZM 357.1°
TVD 6042.00'

CHK: lly - gy, sft - mod firm, sbbiky, sl
mot, rthy - wxy tex, v calc
MRL: gy - dkgy, mod sft - mod firm, sbbiky -
sbbiky, silty tex, sl mot, v calc

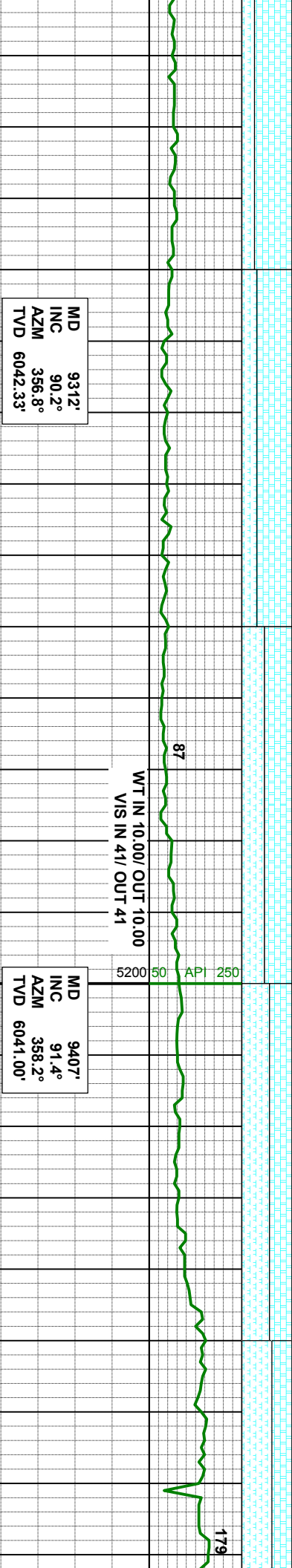
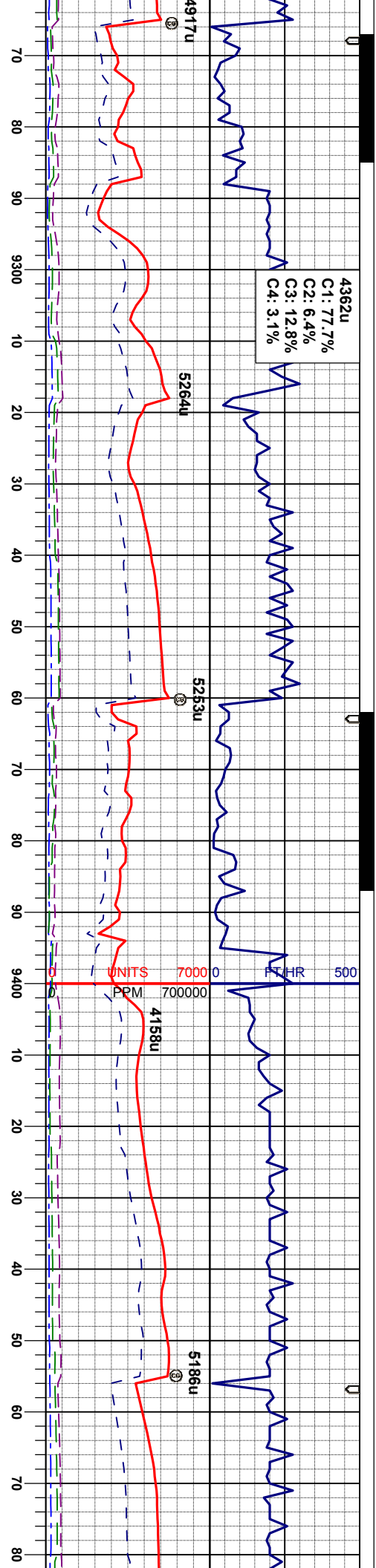
CHK: lly - gy, sft - mod firm, sbbiky, sl
mot, rthy - wxy tex, v calc
MRL: gy - dkgy, mod sft - mod firm, sbbiky -
sbbiky, silty tex, sl mot, v calc

CHK: lly - gy, sft - mod firm, sbbiky, sl
mot, rthy - wxy tex, v calc
MRL: gy - dkgy, mod sft - mod firm, sbbiky -
sbbiky, silty tex, sl mot, v calc

CHK: lly - gy, sft - mod firm, sbbiky, sl
mot, rthy - wxy tex, v calc
MRL: gy - dkgy, mod sft - mod firm, sbbiky -
sbbiky, silty tex, sl mot, v calc

CHK: lly - gy, sft - mod firm, sbbiky, sl
mot, rthy - wxy tex, v calc
MRL: gy - dkgy, mod sft - mod firm, sbbiky -
sbbiky, silty tex, sl mot, v calc





7 - gy, sft - mod firm, sbbiky, sl
- wxy tex, v calc
- dkgy, mod sft - mod firm, sbbiky -
ly tex, sl mot, v calc

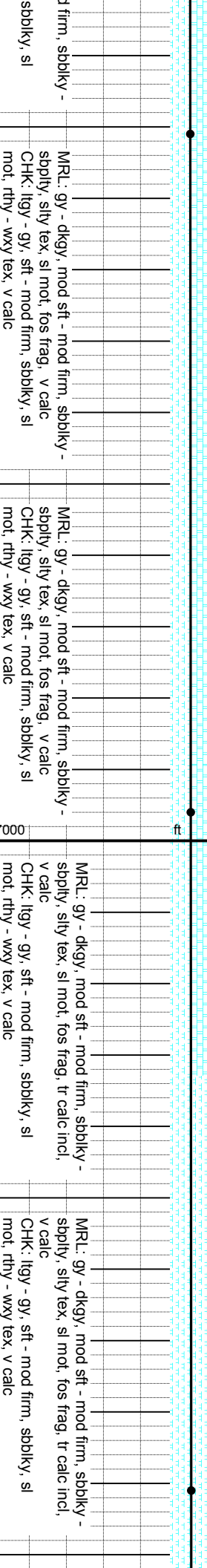
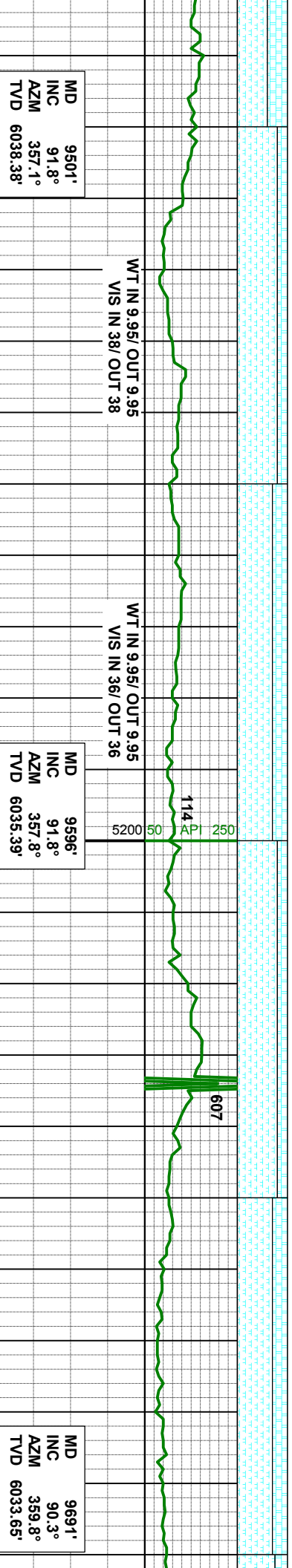
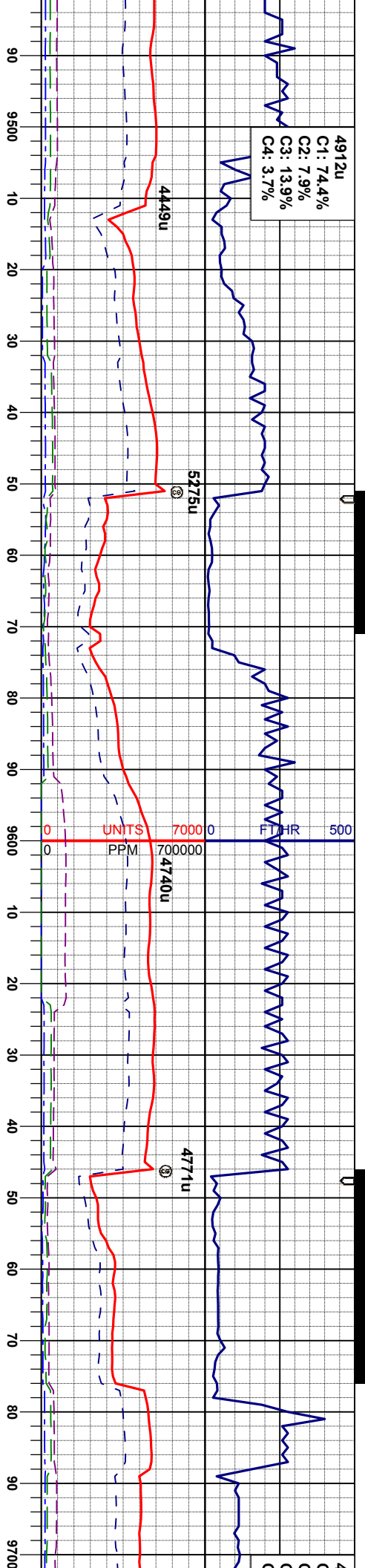
CHK: lly - gy, sft - mod firm, sbbiky, sl
mot, rthy - wxy tex, v calc
MRL: gy - dkgy, mod sft - mod firm, sbbiky -
sbbiky, slty tex, sl mot, v calc

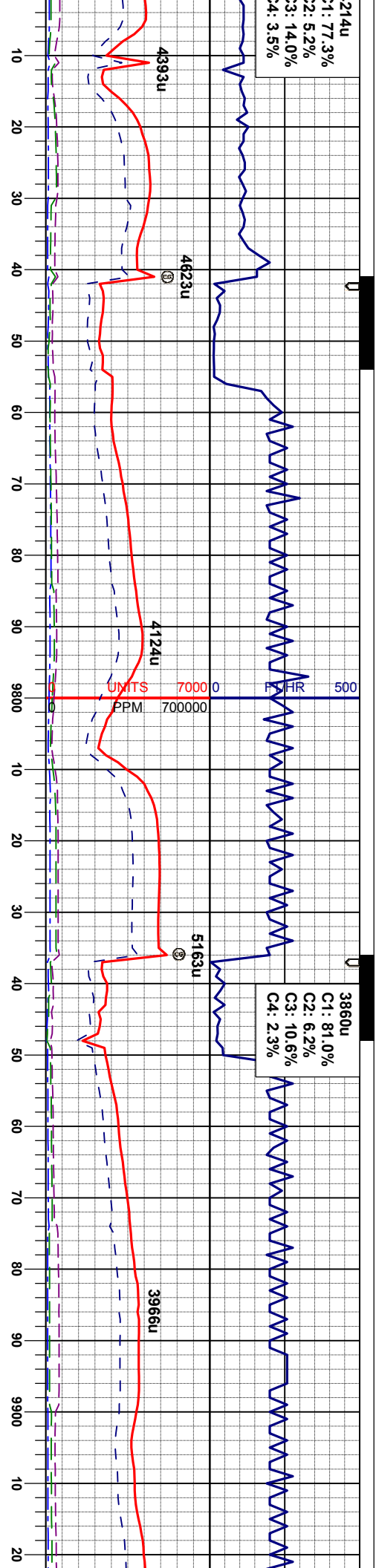
CHK: lly - gy, sft - mod firm, sbbiky, sl
mot, rthy - wxy tex, v calc
MRL: gy - dkgy, mod sft - mod firm, sbbiky -
sbbiky, slty tex, sl mot, v calc

MRL: gy - dkgy, mod sft - mod firm, sbbiky -
sbbiky, slty tex, sl mot, v calc
CHK: lly - gy, sft - mod firm, sbbiky, sl
mot, rthy - wxy tex, v calc

MRL: gy - dkgy, mod sft - mod firm, sbbiky -
sbbiky, slty tex, sl mot, v calc
CHK: lly - gy, sft - mod firm, sbbiky, sl
mot, rthy - wxy tex, v calc







WT IN 10.05/ OUT 10.05
VIS IN 38/ OUT 38

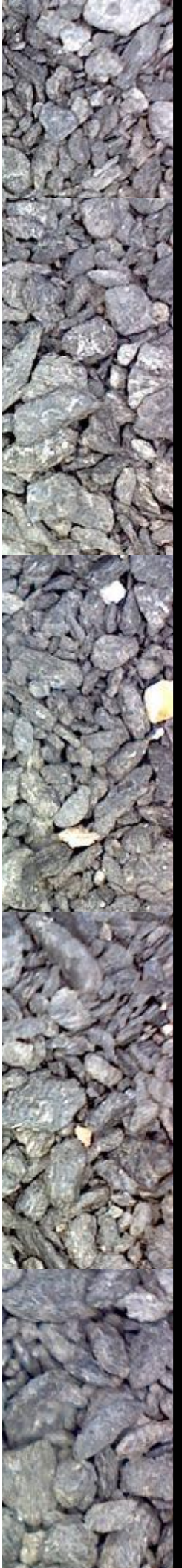
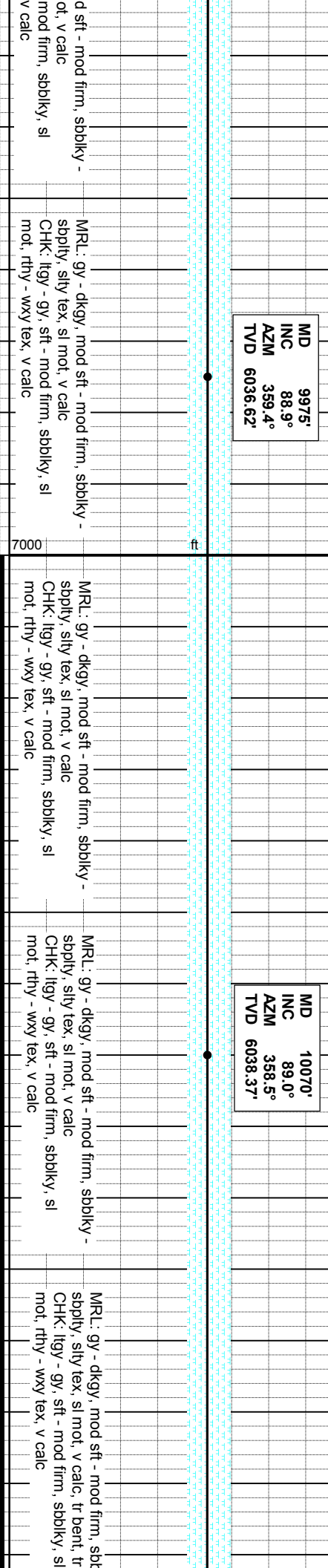
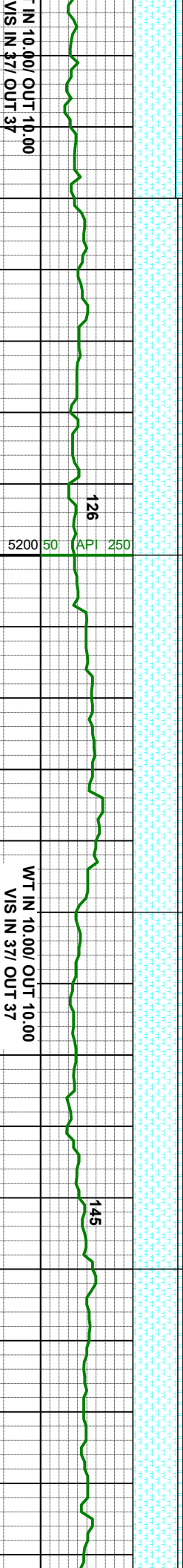
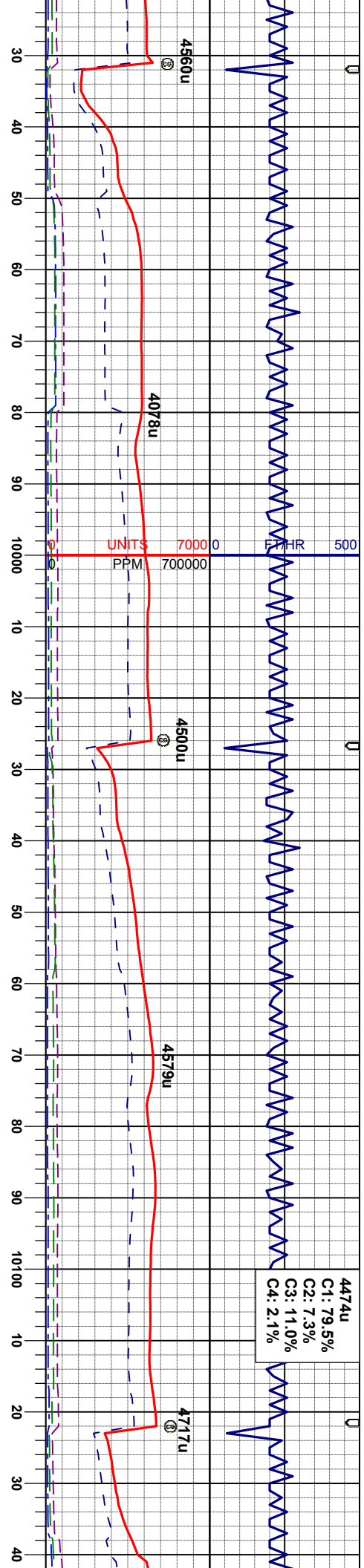
WT IN 9.95/ OUT 9.95
VIS IN 37/ OUT 37

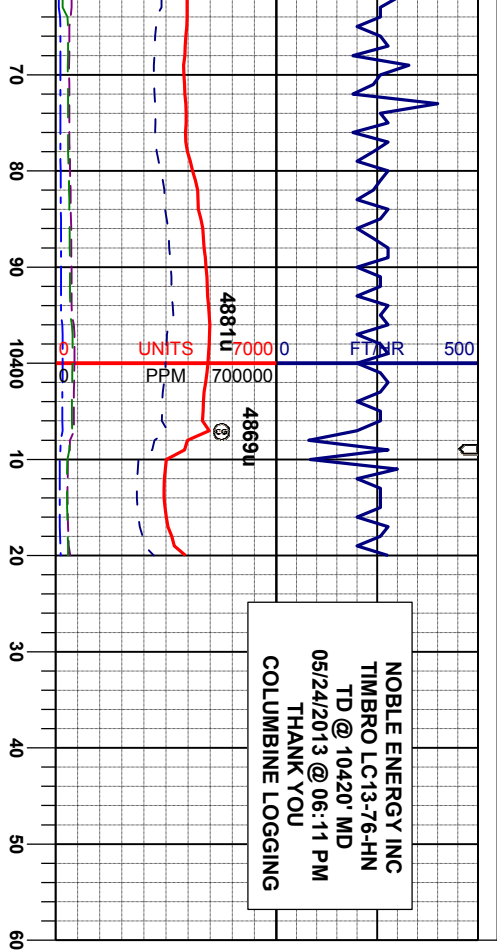
MD 9786'
INC 89.6°
AZM 359.6°
TVD 6033.74'

MD 9880'
INC 89.0°
AZM 359.6°
TVD 6034.88'

MR.L: gy - dkgy, mod sft - mod firm, sbbiky - sbbiky, silty tex, sl mot, fos frag, tr calc incl, v calc
CHK: lity - gy, sft - mod firm, sbbiky, sl mot, rthy - wxy tex, v calc
MR.L: gy - dkgy, mod sft - mod firm, sbbiky - sbbiky, silty tex, sl mot, fos frag, tr calc incl, v calc
CHK: lity - gy, sft - mod firm, sbbiky, sl mot, rthy - wxy tex, v calc
MR.L: gy - dkgy, mod sft - mod firm, sbbiky - sbbiky, silty tex, sl mot, v calc
CHK: lity - gy, sft - mod firm, sbbiky, sl mot, rthy - wxy tex, v calc
MR.L: gy - dkgy, mod sft - mod firm, sbbiky - sbbiky, silty tex, sl mot, v calc
CHK: lity - gy, sft - mod firm, sbbiky, sl mot, rthy - wxy tex, v calc







MD 10370'
INC 90.5°
AZM 356.1°
TVD 6039.45'

PROJ TO BIT
MD 10420'
INC 90.5°
AZM 356.1°
TVD 6039.45'

NOBLE ENERGY INC
TIMBRO LC13-76-HN
TD @ 10420' MD
05/24/2013 @ 06:11 PM

- dkgy, mod sft - mod firm, sbblky -
ly tex, sl mot, v calc
- gy, sft - mod firm, sbblky, sl
- wxy tex, v calc

MRL: gy - dkgy, mod sft - mod firm, sbblky -
sbply, slty tex, sl mot, v calc
CHK: lty - gy, sft - mod firm, sbblky, sl
mot, rhy - wxy tex, v calc

