

# COLORADO WELL LOCATION

OPERATOR: Pioneer Natural Resources

WELL NAME: San Pablo 11-4 WD

SECTION 4 TOWNSHIP 33 S, RANGE 67 W OF THE 6TH P.M., IN LAS ANIMAS COUNTY

ACTUAL FOOTAGE OF WELL LOCATION:

990 feet from the WEST line and 528 feet from the NORTH line.

GROUND ELEV. (NGVD29):

7534'

BASIS OF BEARING: GPS Observations

BASIS OF ELEVATION: GPS Observations

PDOP: 5.3

SURFACE USE: Timber

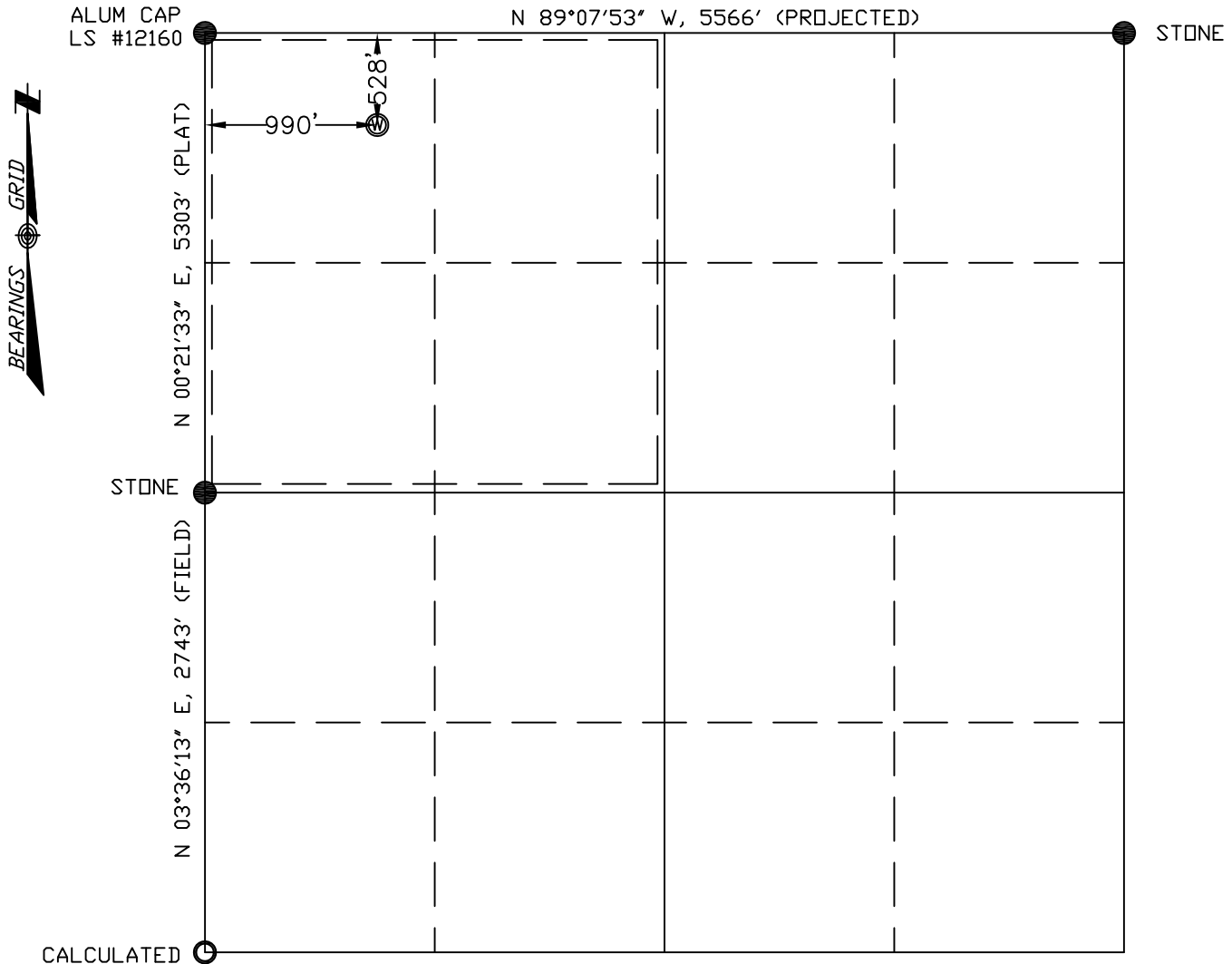
DATE STAKED: July 24, 2013

LAT: N 37.20633°

LONG: W 104.89798° (NAD27)

LAT: N 37.20634°

LONG: W 104.89853° (NAD83)



250 0 250 500 1000  
(in feet)  
1 inch = 1000 ft.

## LEGEND:

- ⊙ = WELL LOCATION
- = SURVEY MARKER (SEE DRAWING)
- = CALCULATED POINT
- = LOCATION FURNISHED BY PNRC.

Field Operator: S. Weese

## NOTICE:

SOME INFORMATION SHOWN HEREON IS BASED ON INFORMATION TAKEN FROM RECORD INFORMATION, PREVIOUS SURVEYS, PLATS AND SURVEYS BY OTHER SURVEYORS, OR COLLATERAL EVIDENCE AND MAY NOT REFLECT THAT WHICH MAY BE DISCLOSED BY A COMPLETE BOUNDARY SURVEY. **THIS SKETCH IS NOT TO BE RELIED UPON FOR THE ESTABLISHMENT OF SURFACE BOUNDARIES, FENCES, BUILDINGS OR OTHER FUTURE IMPROVEMENTS.**

I hereby certify that this proposed well location shown was plotted from field notes of a actual 38-51-1093 and was made by me or under my supervision, and that the same is true and correct to the best of my knowledge and belief and IS NOT A LAND SURVEY PLAT.

*Norman Scott Weese*  
Norman Scott Weese, CO PLS #28116 Date Platted July 31, 2013

## NOTE:

ALL WELL LOCATIONS AND ELEVATIONS DERIVED FROM OBSERVED GPS DATA AND DIFFERENTIALLY CORRECTED TO CORS STATION PUEBLO 1 (PID #AJ6946) AND MEET AND/OR EXCEED COGCC RULE 303c AND RULE 215a-h.

ALL VISIBLE IMPROVEMENTS WITHIN 400 FEET OF PROPOSED WELLHEAD WILL BE NOTED OR SHOWN ON A LOCATION PLAT.

DISTANCES ARE MEASURED AT 90° (NINETY DEGREES) FROM SAID SECTION LINES TO THE WELL LOCATION.

DESIRED PDOP MAY NOT BE OBTAINED DUE TO NATIVE CONDITIONS OF SITE.

SHIELDS SURVEY L<sup>td</sup>. C<sup>o</sup>. Raton, New Mexico 87740  
(575)445-1232