



NABORS

**COMPLETION
& PRODUCTION
SERVICES CO.**

MICRO LOG

Company	MULL DRILLING COMPANY, INC.	Company	MULL DRILLING COMPANY, INC.	Location:	API # : 05-017-07755-00	Other Services CDL/CNL/PE DIL/SONIC
Well	APC - BAUGHMAN UNIT #1-35	Well	APC - BAUGHMAN UNIT #1-35			
Field	WILDCAT	Field	WILDCAT			
County	CHEYENNE	County	CHEYENNE			
State	COLORADO	State	COLORADO			
Permanent Datum	GROUND LEVEL	Elevation	4218			
Log Measured From	KELLY BUSHING 11' A.G.L.					
Drilling Measured From	KELLY BUSHING					
SEC 35	TWP 16S	RGE 45W				
Date	8/2/13					
Run Number	TWO					
Depth Driller	5490					
Depth Logger	5492					
Bottom Logged Interval	5470					
Top Log Interval	3800					
Casing Driller	8 5/8"@65.1'					
Casing Logger	649					
Bit Size	7 7/8"					
Type Fluid in Hole	CHEMICAL MUD	CHLORIDES 4,700 PPM				
Density / Viscosity	9.2/55					
pH / Fluid Loss	10.0/8.8					
Source of Sample	FLOWLINE					
Rim @ Meas. Temp	.700@90F					
Rinf @ Meas. Temp	.525@90F					
Rinc @ Meas. Temp	.840@90F					
Source of Rinf / Rinc	MEASUREMENT					
Rim @ BHT	.488@129F					
Time Circulation Stopped	5.5 HOURS					
Time Logger on Bottom	9:15 A.M.					
Maximum Recorded Temperature	129F					
Equipment Number	4854					
Location	HAYS, KANSAS					
Recorded By	JEFF LUEBBERS					
Witnessed By	PHIL ASKEY	GREG TWOMBLY	JERRY ROANE			

<<< Fold Here >>>

All interpretations are opinions based on inferences from electrical or other measurements and we cannot and do not guarantee the accuracy or correctness of any interpretation, and we shall not, except in the case of gross or willful negligence on our part, be liable or responsible for any loss, costs, damages, or expenses incurred or sustained by anyone resulting from any interpretation made by any of our officers, agents or employees. These interpretations are also subject to our general terms and conditions set out in our current Price Schedule.

Comments

THANK YOU FOR USING "NABORS" HAYS, KANSAS (785) 628-6395
DIRECTIONS
CHEYENNE WELLS, CO. 13S. ON HWY 385 TO "RD. C", 6 W. TO "T", 3/4S., E. INTO



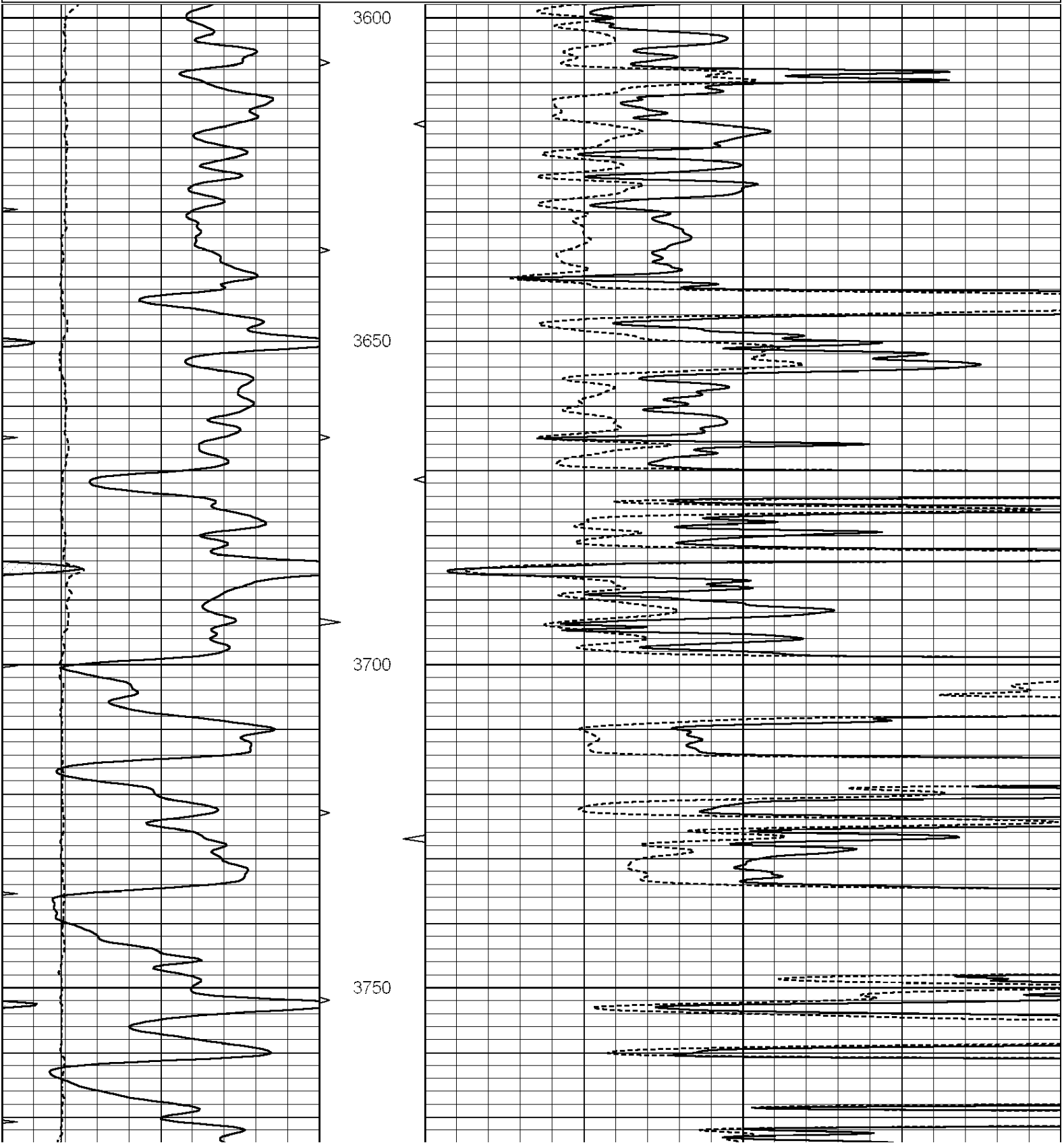
NABORS

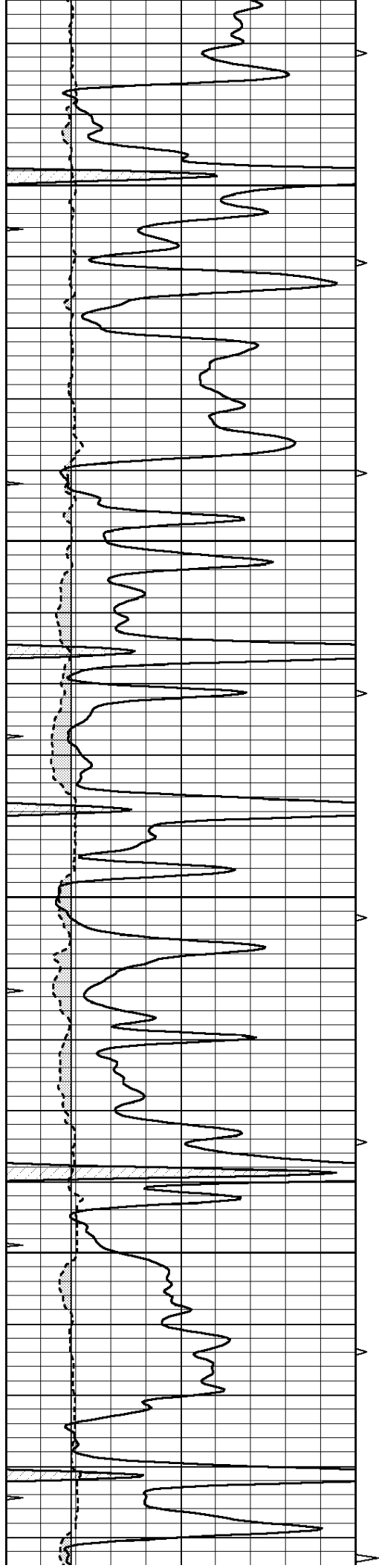
**COMPLETION
& PRODUCTION**

MAIN SECTION

Database File: 011197pe.db
Dataset Pathname: pass6.2
Presentation Format: micro
Dataset Creation: Fri Aug 02 13:04:35 2013
Charted by: Depth in Feet scaled 1:240

0	GAMMA RAY (GAPI)	150	ABHV	0	MEL1.5 (Ohm-m)	40
6	CALIPER (in)	16	10 (ft3)	0	MEL2.0 (Ohm-m)	40
0	MINMK	20	TBHV			
			0 (ft3)	10		



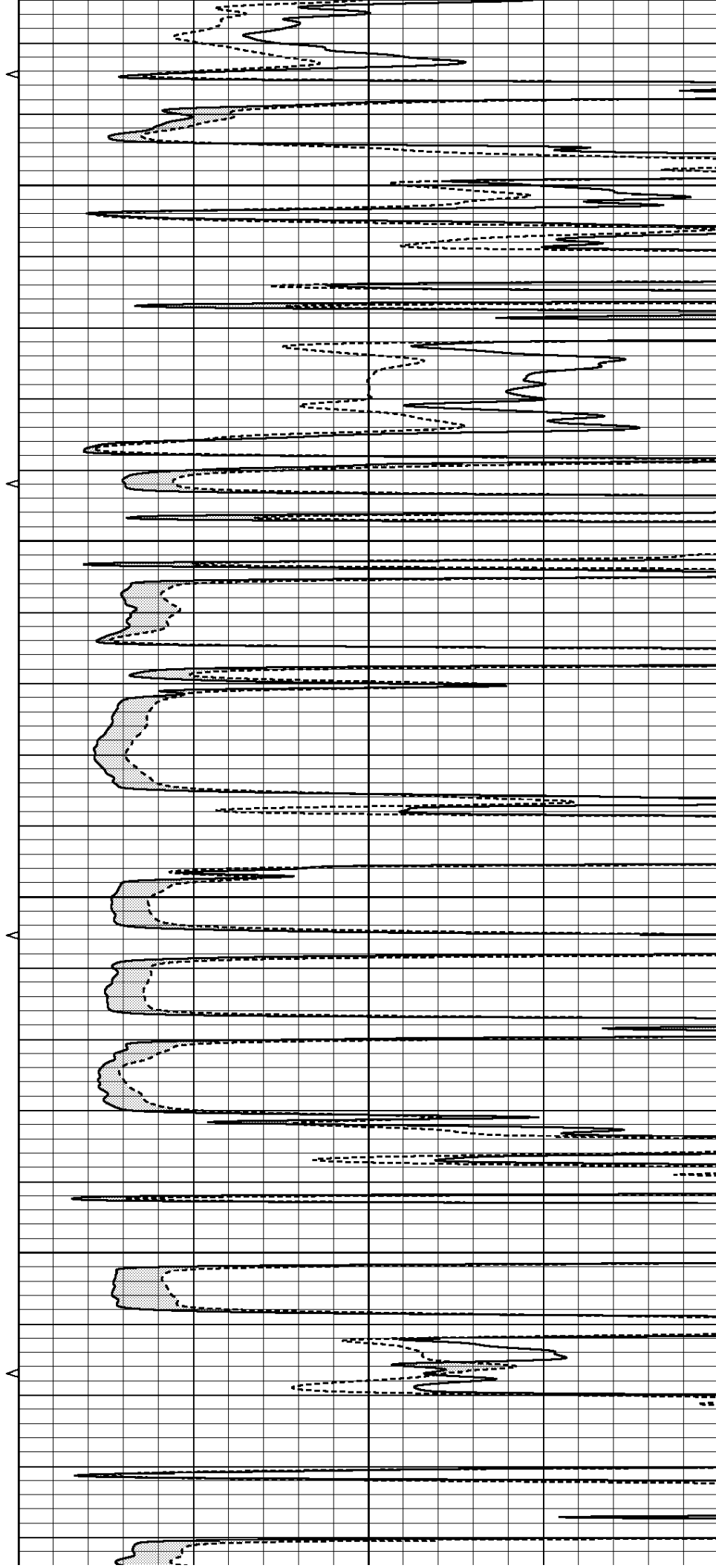


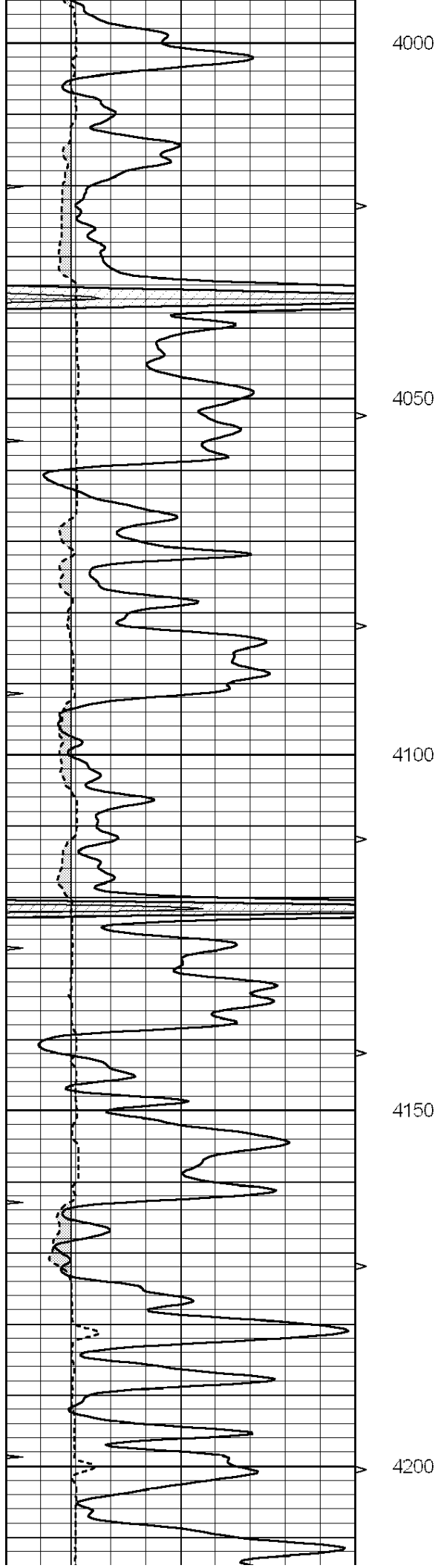
3800

3850

3900

3950





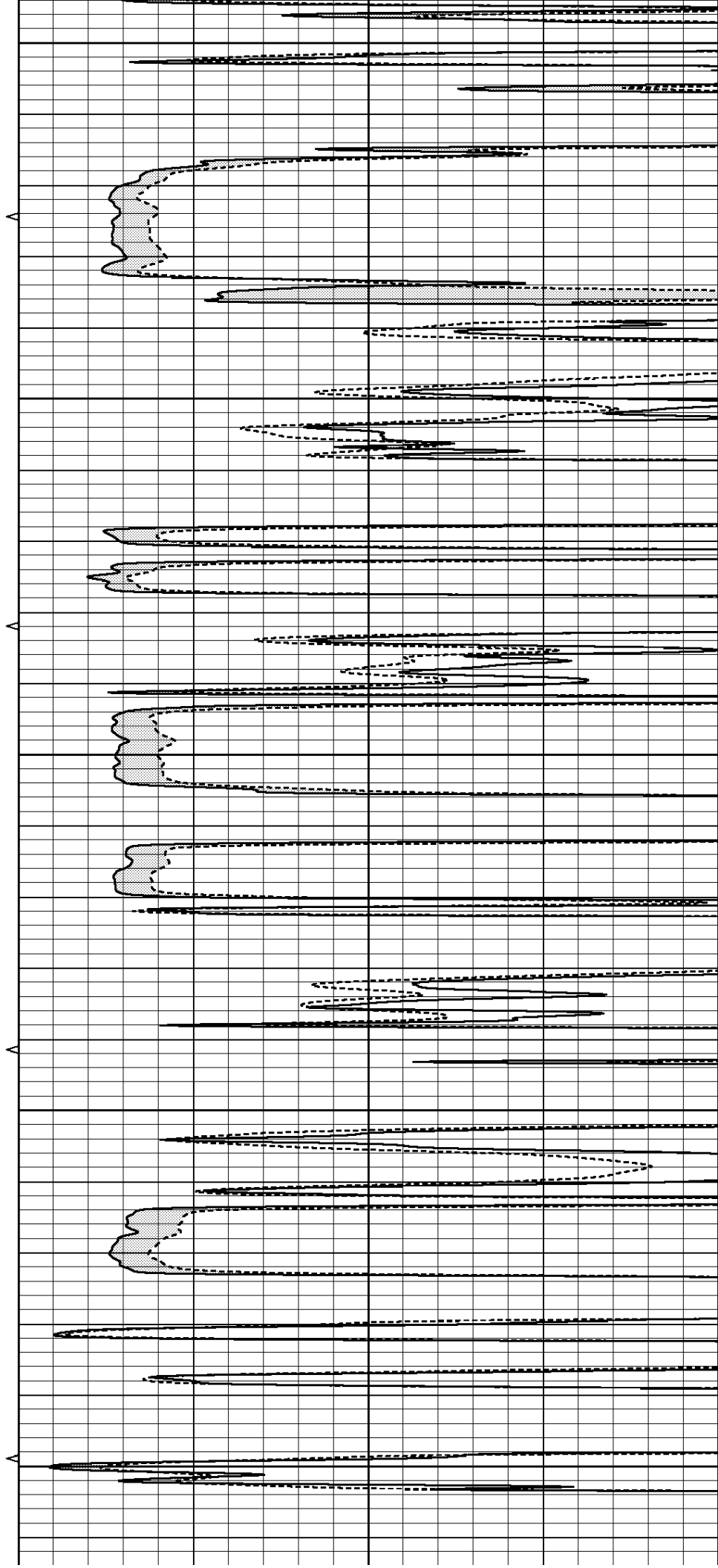
4000

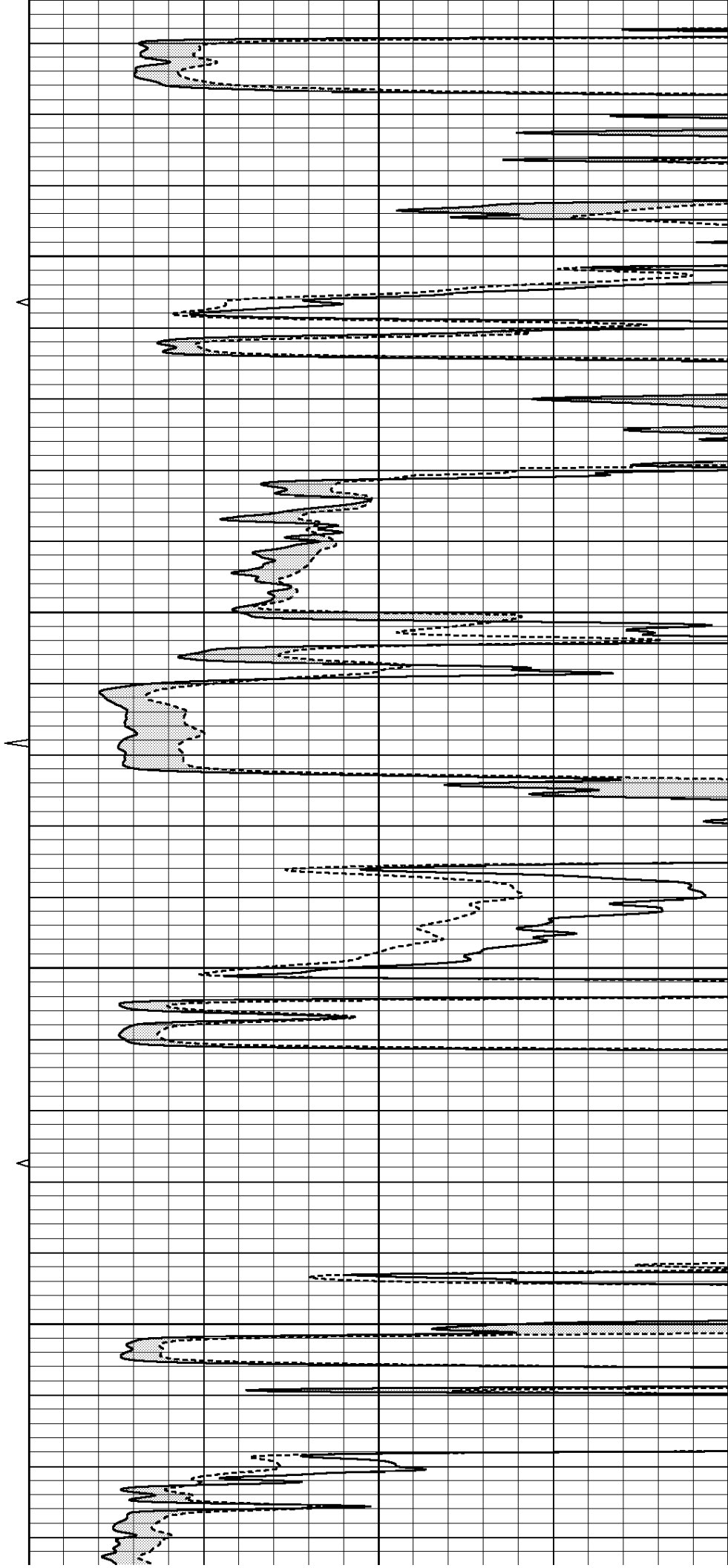
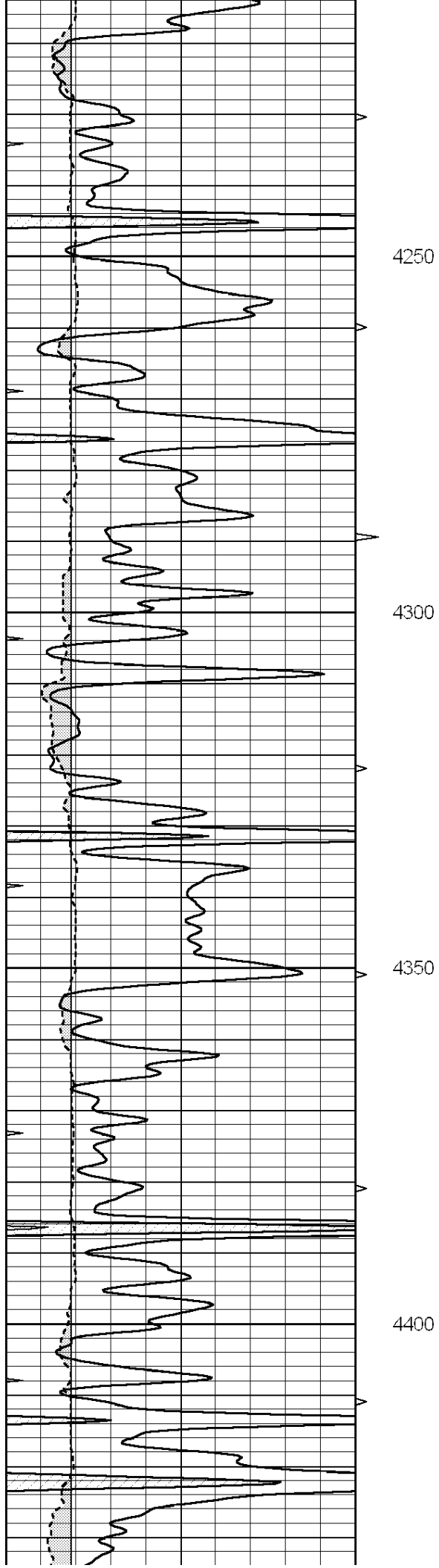
4050

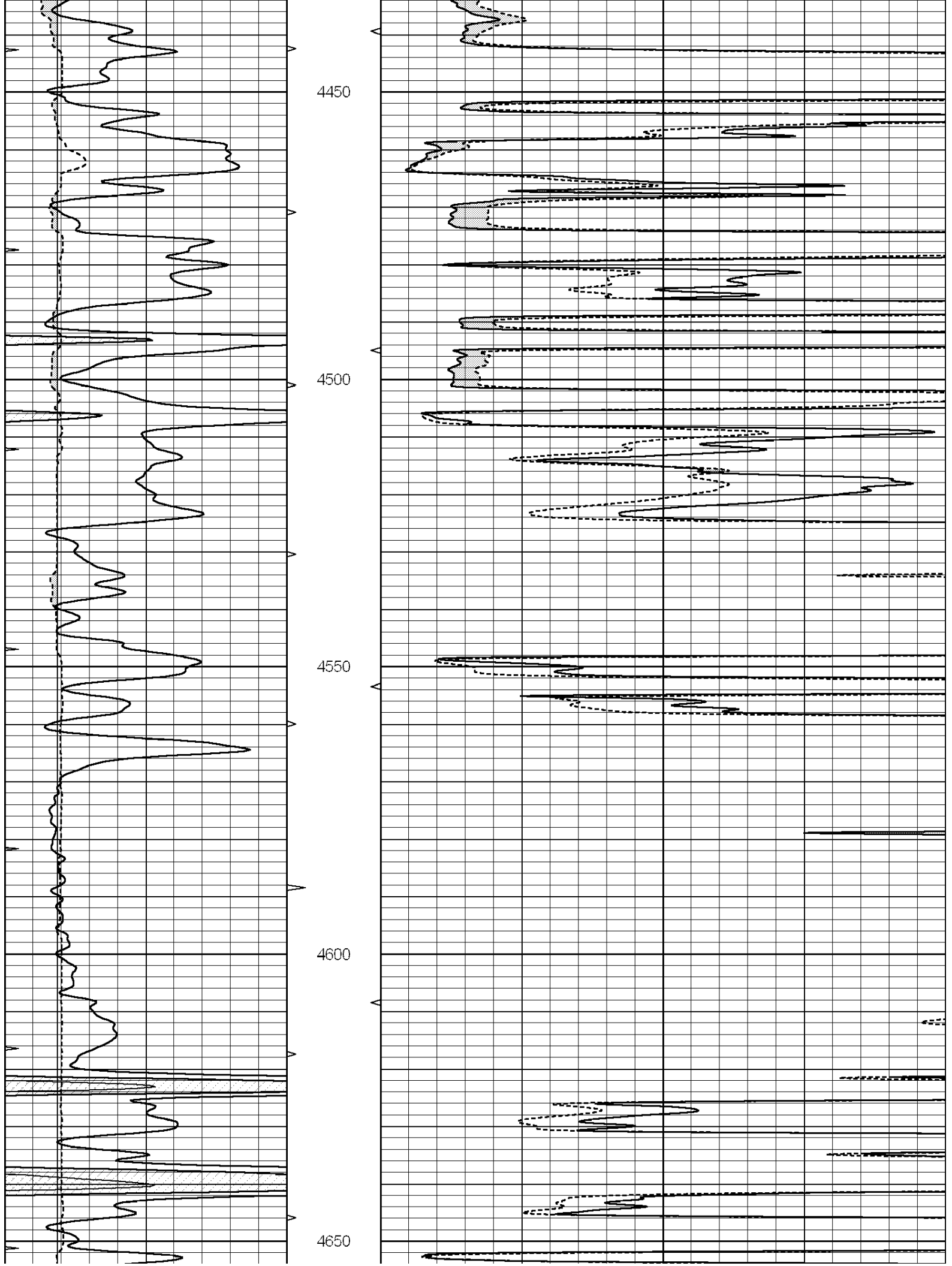
4100

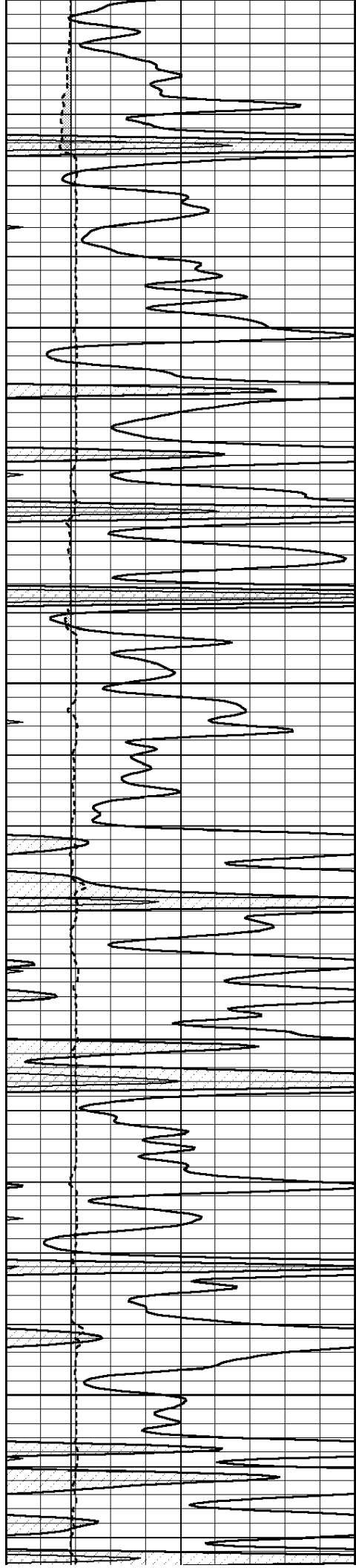
4150

4200







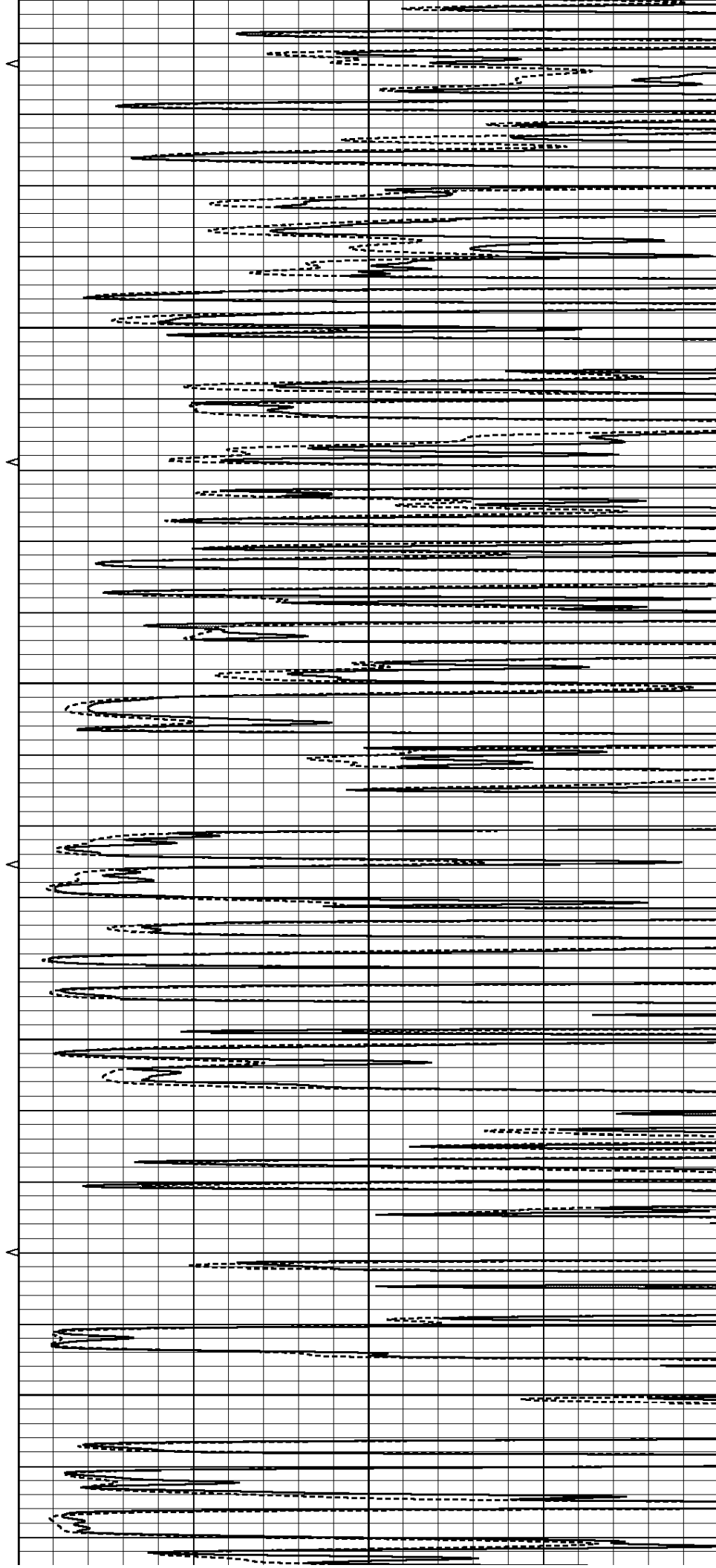


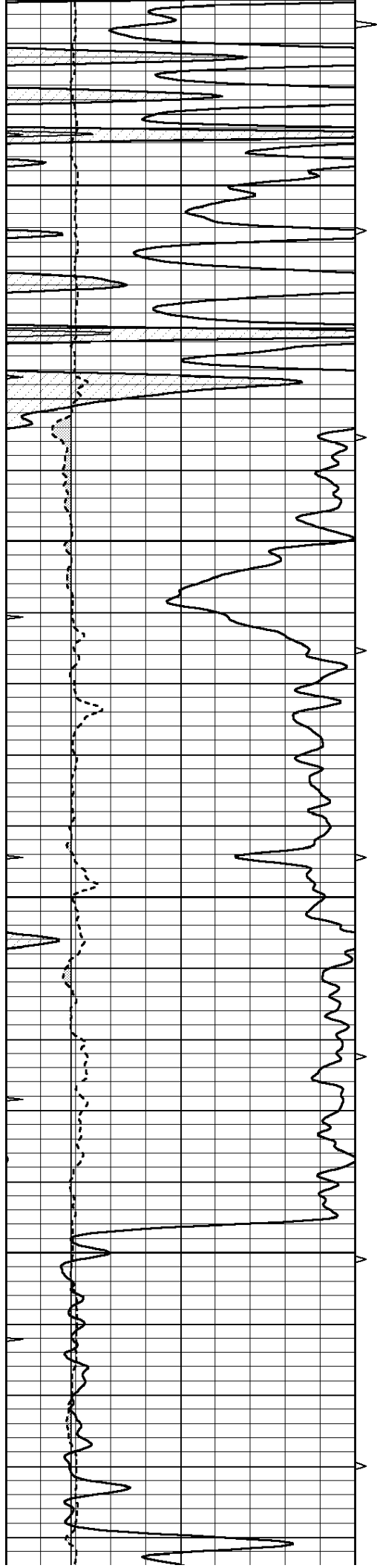
4700

4750

4800

4850



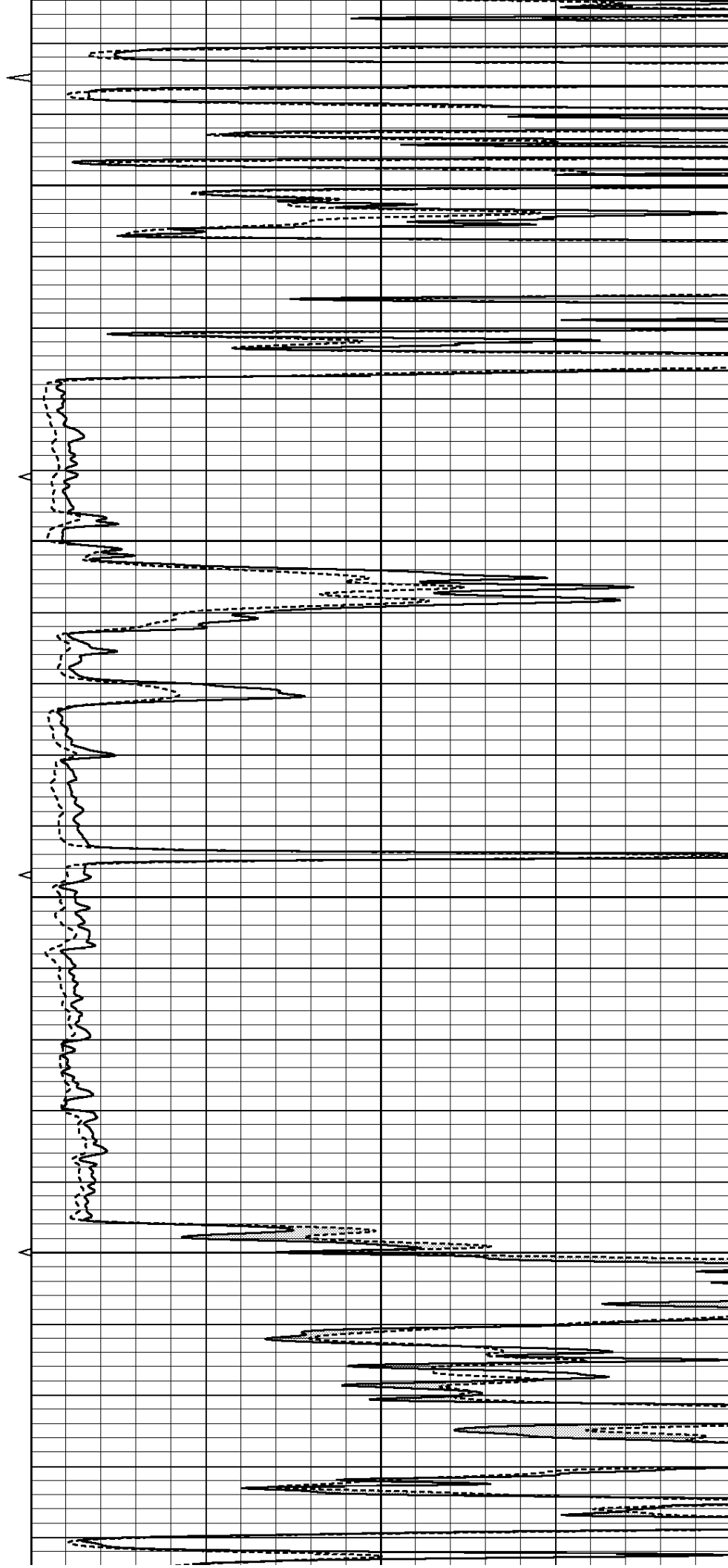


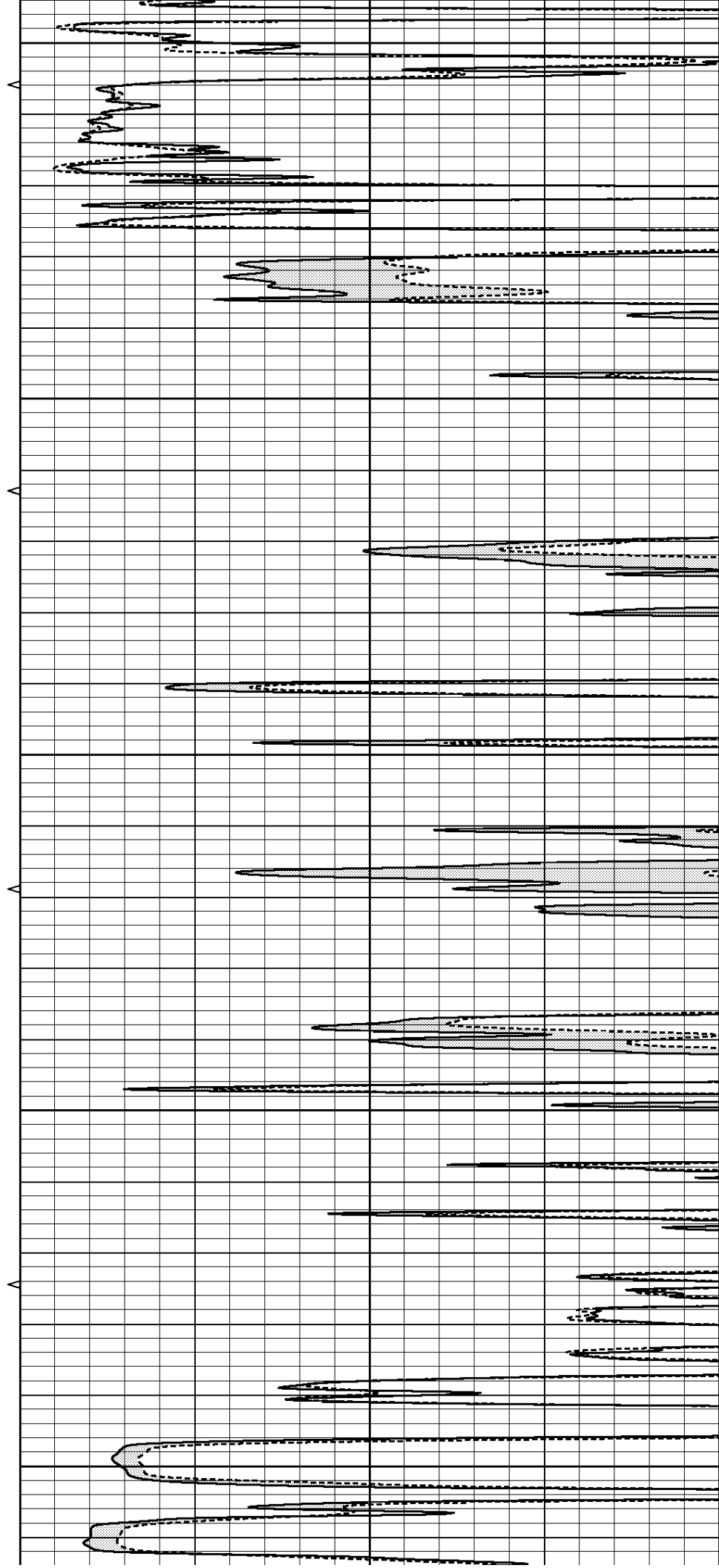
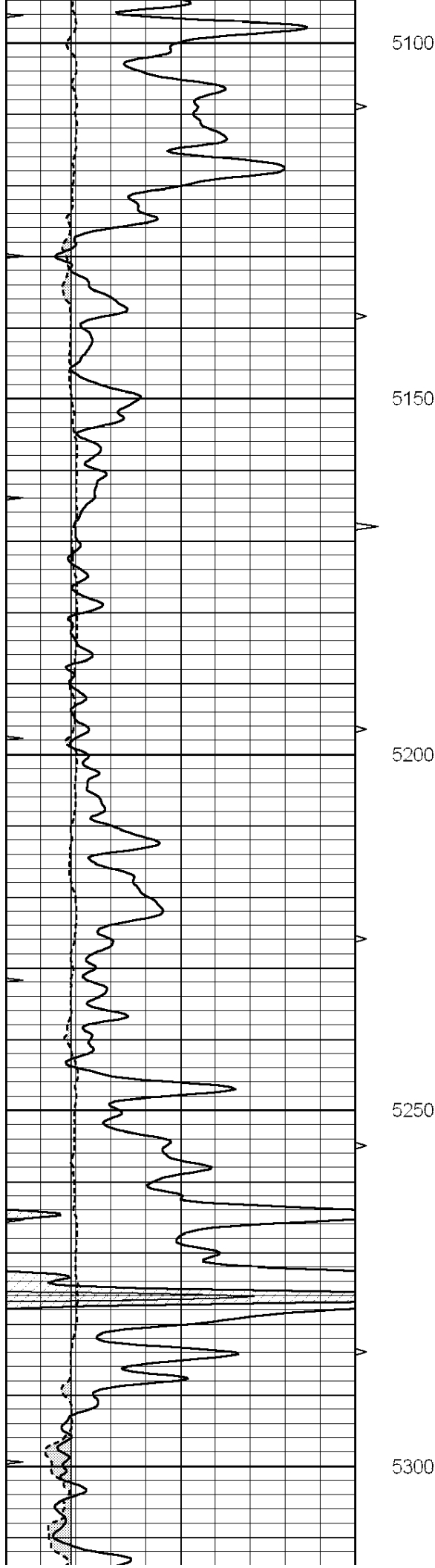
4900

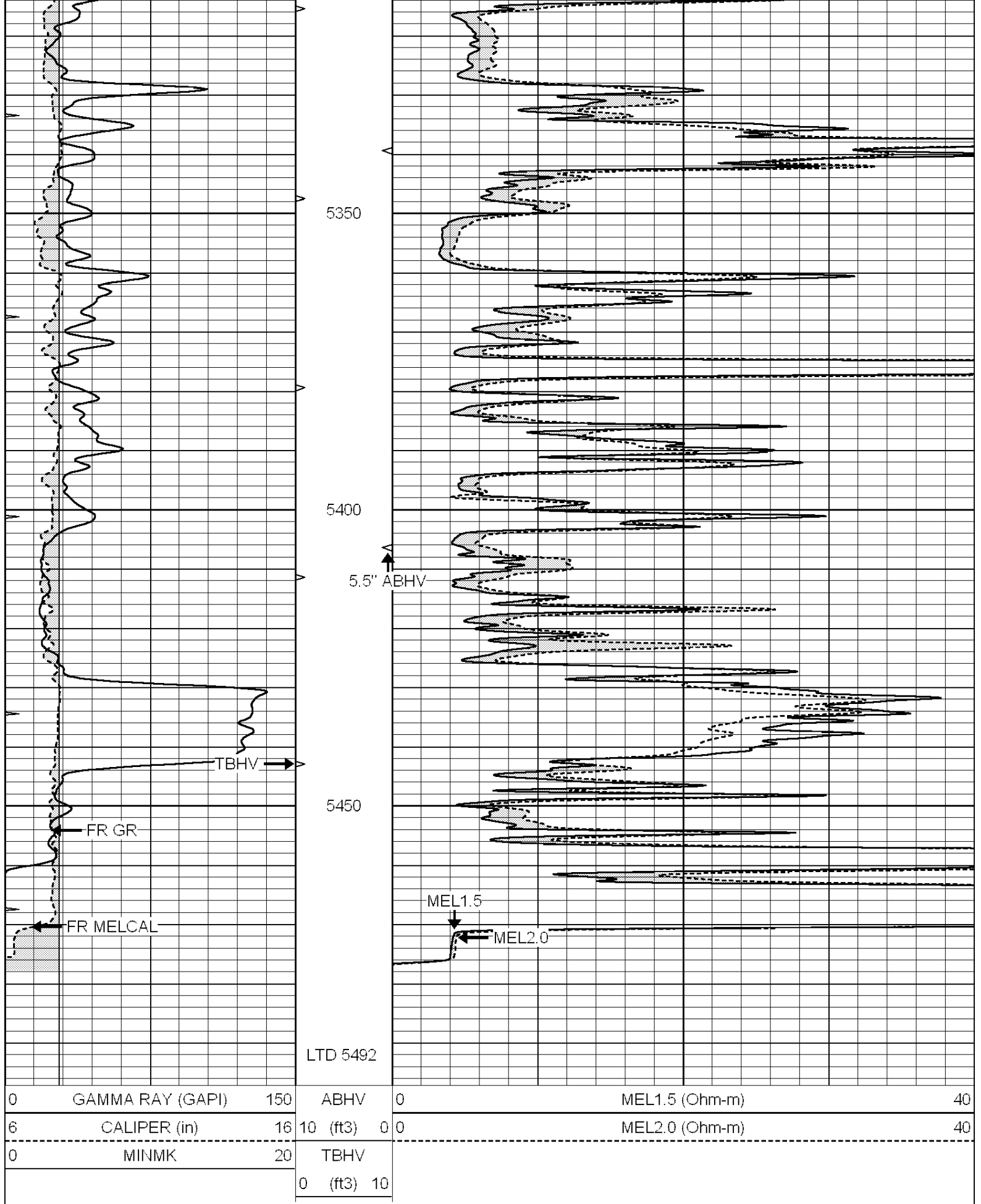
4950

5000

5050

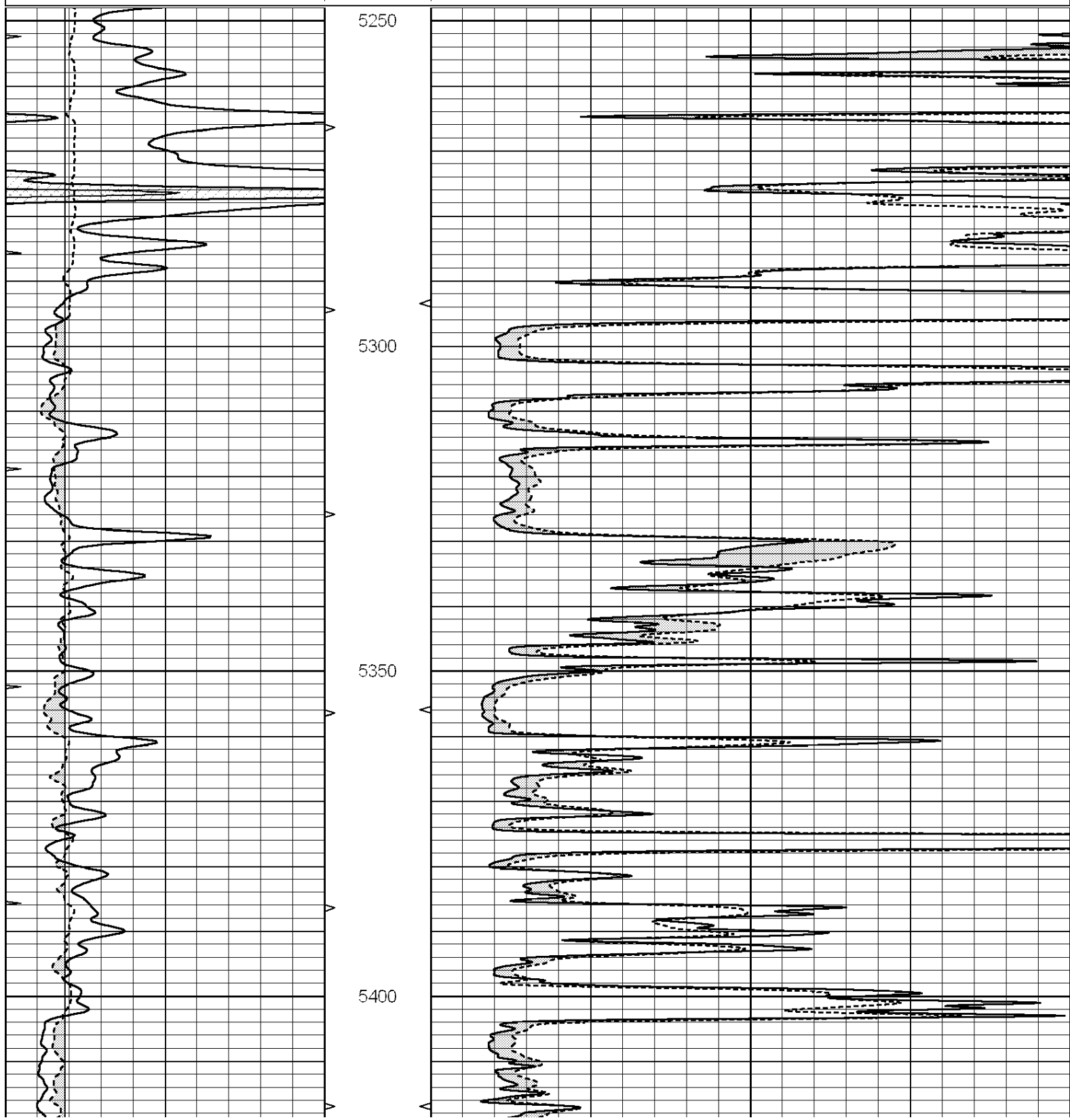


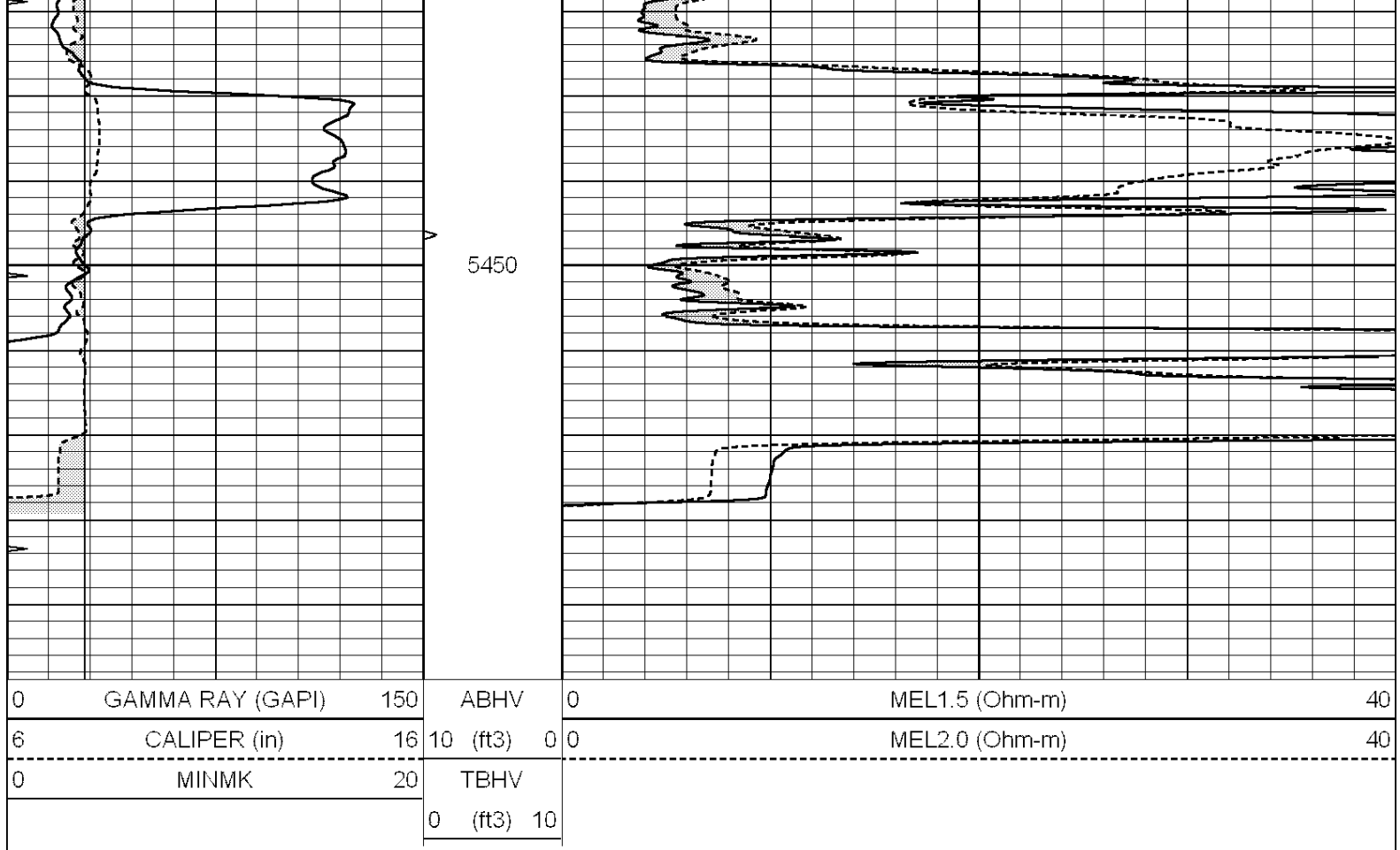




Database File: 011197pe.db
 Dataset Pathname: pass5.5
 Presentation Format: micro
 Dataset Creation: Fri Aug 02 13:12:06 2013
 Charted by: Depth in Feet scaled 1:240

0	GAMMA RAY (GAPI)	150	ABHV	0	MEL1.5 (Ohm-m)	40
6	CALIPER (in)	16	10 (ft3)	0 0	MEL2.0 (Ohm-m)	40
0	MINMK	20	TBHV			
			0 (ft3) 10			





Calibration Report			
Database File:	011197pe.db		
Dataset Pathname:	pass6.2		
Dataset Creation:	Fri Aug 02 13:04:35 2013		
MICRO Calibration Report			
Serial Number:	MICRO5		
Tool Model:	PROBE		
Performed:	Thu Jul 11 16:32:51 2013		
Caliper Calibration:	Gain=3.605	Offset=-6.802	
	Low Cal	High Cal	
References	8.000	15.000	
Readings	4.106	6.048	
1.5" Calibration:	Gain=44.000	Offset=-1.000	
	Low Cal	High Cal	
References	0.000	20.000	
Readings	0.015	1.005	
2" Calibration:	Gain=50.000	Offset=-1.400	
	Low Cal	High Cal	
References	0.000	20.000	
Readings	0.009	0.910	
Gamma Ray Calibration Report			
Serial Number:	GR3		
Tool Model:	OPEN		
Performed:	Tue Jul 30 19:40:07 2013		
Calibrator Value:	200.0	GAPI	

Calibrator Value:	200.0	GAPI
Background Reading:	3.0	cps
Calibrator Reading:	186.0	cps
Sensitivity:	1.8000	GAPI/cps