



NABORS

**COMPLETION
& PRODUCTION
SERVICES CO.**

**MICRO
LOG**

Company MULL DRILLING COMPANY, INC.
Well TALLMAN FARMS "B" #1-30
Field WILDCAT
County CHEYENNE
State COLORADO

Company MULL DRILLING COMPANY, INC.
Well TALLMAN FARMS "B" #1-30
Field WILDCAT
County CHEYENNE State COLORADO

Location: API # : 05-017-07743-00

1660' FNL & 1107' FWL

SEC 30 TWP 16S RGE 44W

Permanent Datum GROUND LEVEL Elevation 4287
Log Measured From KELLY BUSHING 11' A.G.L.
Drilling Measured From KELLY BUSHING

Other Services
CDL/CNL/PE
DIL/SONIC

Elevation

K.B. 4298
D.F. 4296
G.L. 4287

Date 6/30/13

Run Number TWO

Depth Driller 5560

Depth Logger 5558

Bottom Logged Interval 5536

Top Log Interval 3800

Casing Driller 8 5/8" @ 315'

Casing Logger 312

Bit Size 7 7/8"

Type Fluid in Hole CHEMICAL MUD

Density / Viscosity 9.3/63

pH / Fluid Loss 10.0/8.0

Source of Sample FLOWLINE

Rim @ Meas. Temp .600 @ 90F

Rmf @ Meas. Temp .450 @ 90F

Rmc @ Meas. Temp .720 @ 90F

Source of Rmf / Rmc MEASUREMENT

Rim @ BHT .415 @ 130F

Time Circulation Stopped 5.5 HOURS

Time Logger on Bottom 11:00 A.M.

Maximum Recorded Temperature 130F

Equipment Number 4854

Location HAYS, KANSAS

Recorded By JEFF LUEBBERS

Witnessed By PHIL ASKEY

<<< Fold Here >>>

All interpretations are opinions based on inferences from electrical or other measurements and we cannot and do not guarantee the accuracy or correctness of any interpretation, and we shall not, except in the case of gross or willful negligence on our part, be liable or responsible for any loss, costs, damages, or expenses incurred or sustained by anyone resulting from any interpretation made by any of our officers, agents or employees. These interpretations are also subject to our general terms and conditions set out in our current Price Schedule.

Comments

THANK YOU FOR USING "NABORS" HAYS, KANSAS (785) 628-6395
DIRECTIONS
CHEYENNE WELLS, CO. 13S. ON HWY 385 TO "RD. C", 4 W., S. INTO @TANK



NABORS

**COMPLETION
& PRODUCTION**

MAIN SECTION

Database File:

011179pe.db

Dataset Pathname:

pass6.6

Presentation Format:

micro

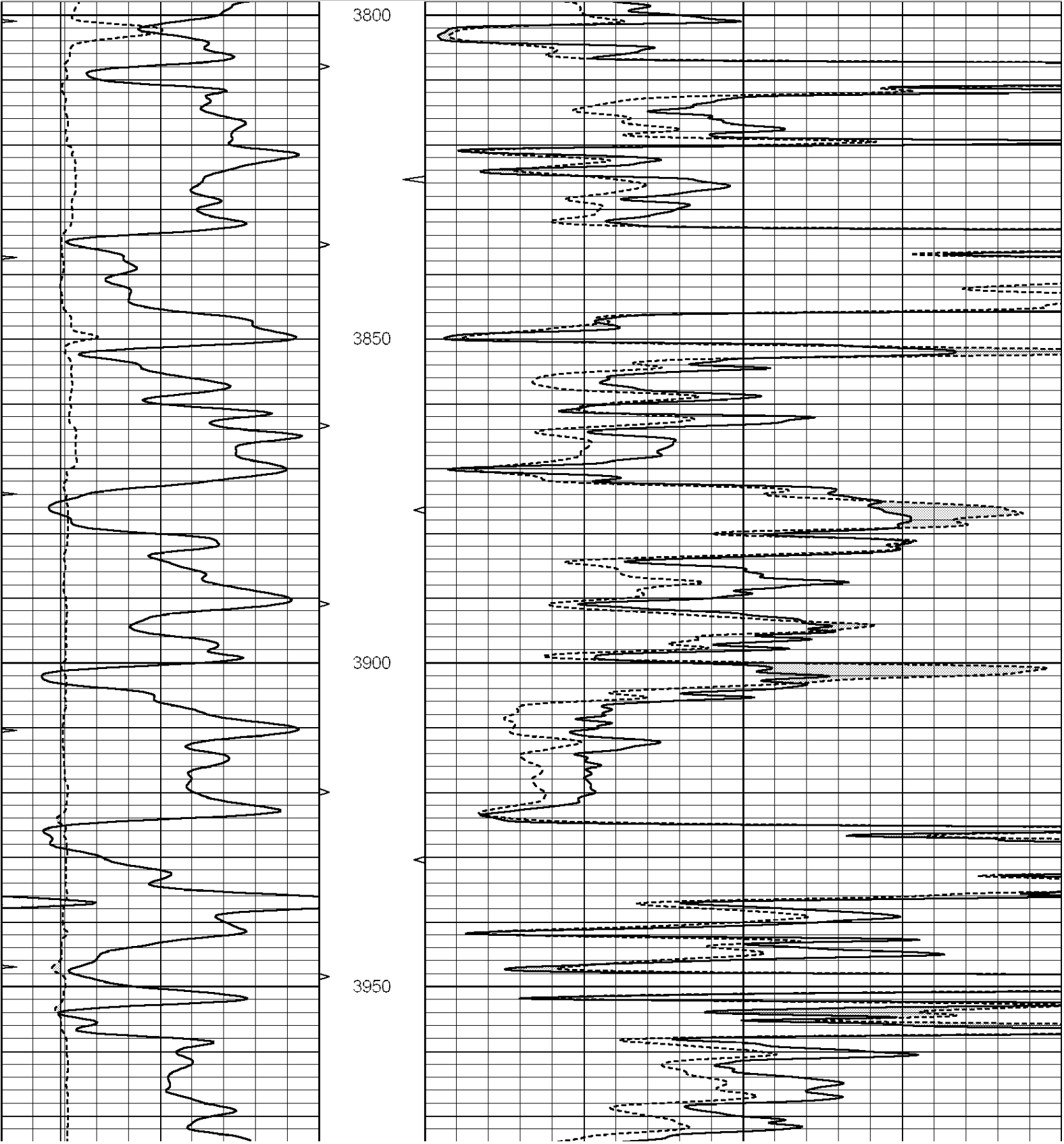
Dataset Creation:

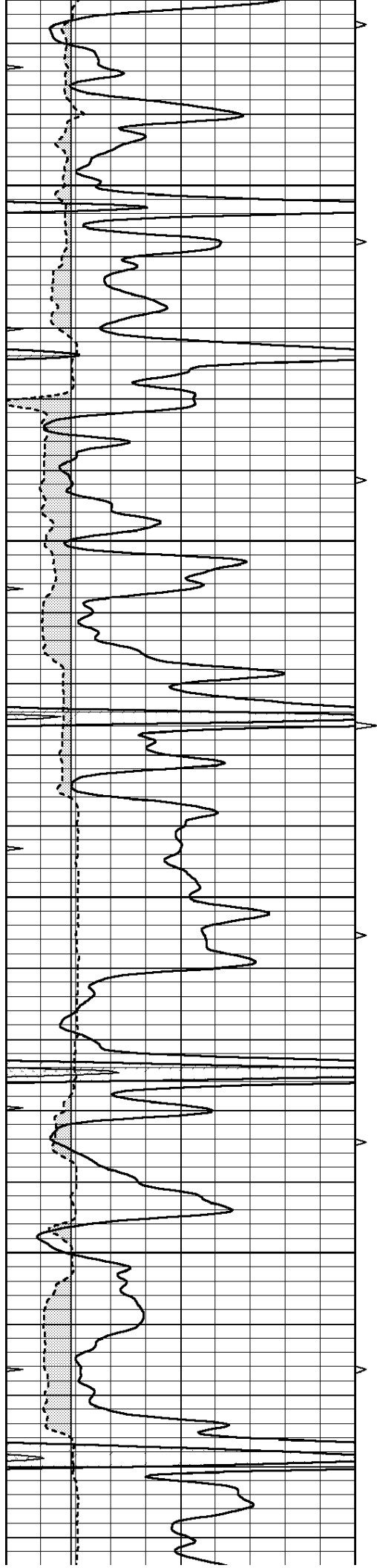
Sun Jun 30 15:09:46 2013

Charted by:

Depth in Feet scaled 1:240

0	GAMMA RAY (GAPI)	150	ABHV	0	MEL1.5 (Ohm-m)	40
6	CALIPER (in)	16	10 (ft3)	0 0	MEL2.0 (Ohm-m)	40
0	MINMK	20	TBHV			
			0 (ft3)	10		



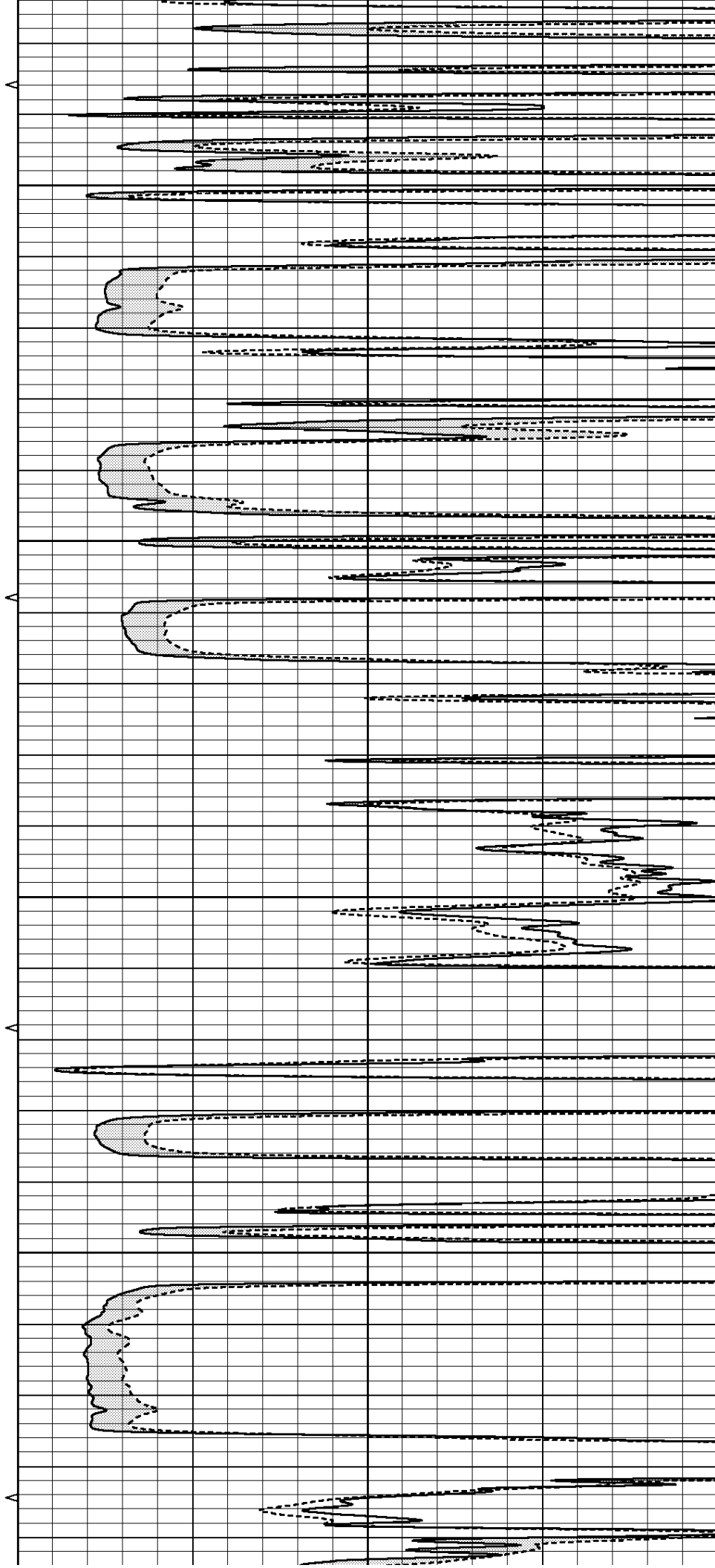


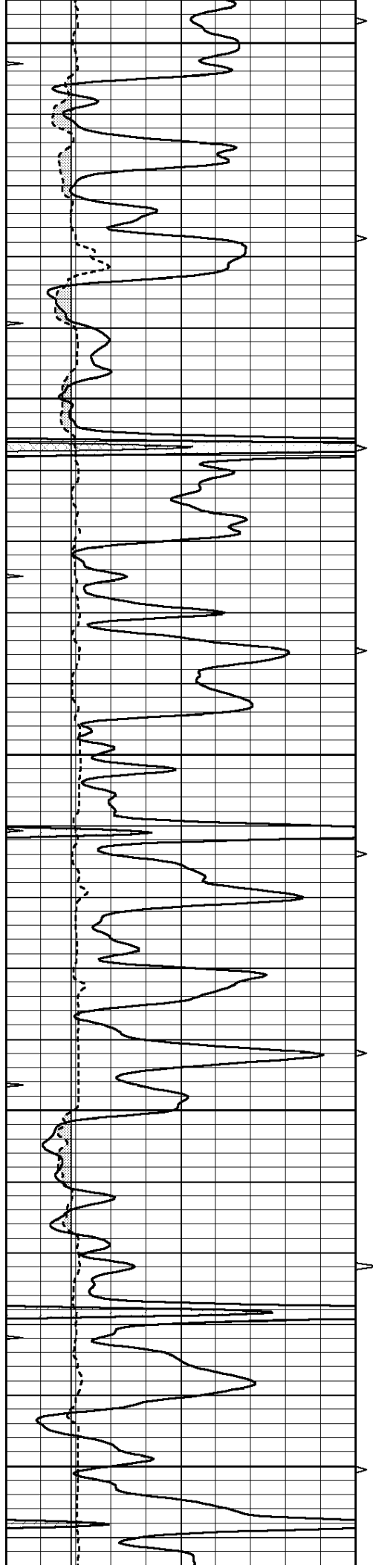
4000

4050

4100

4150





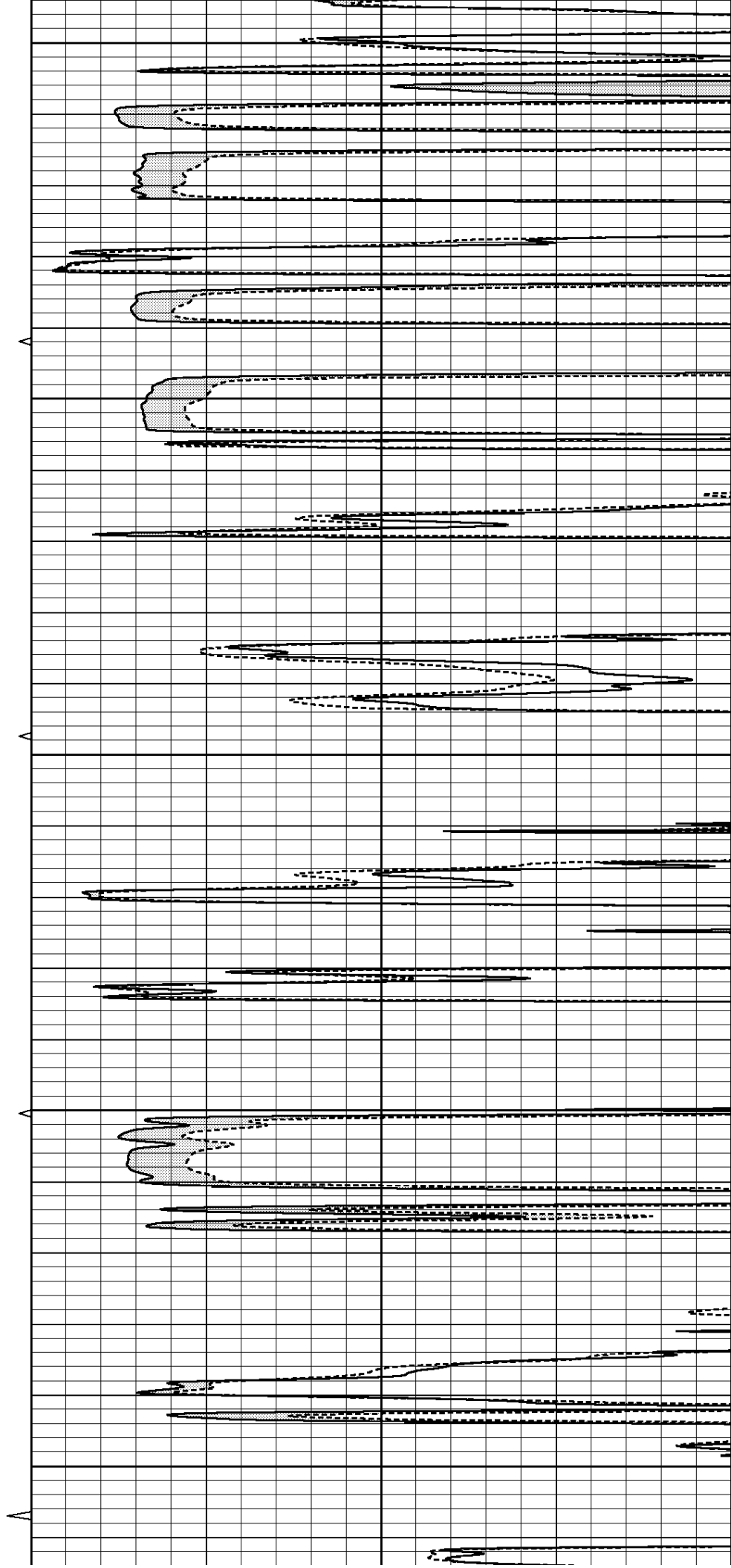
4200

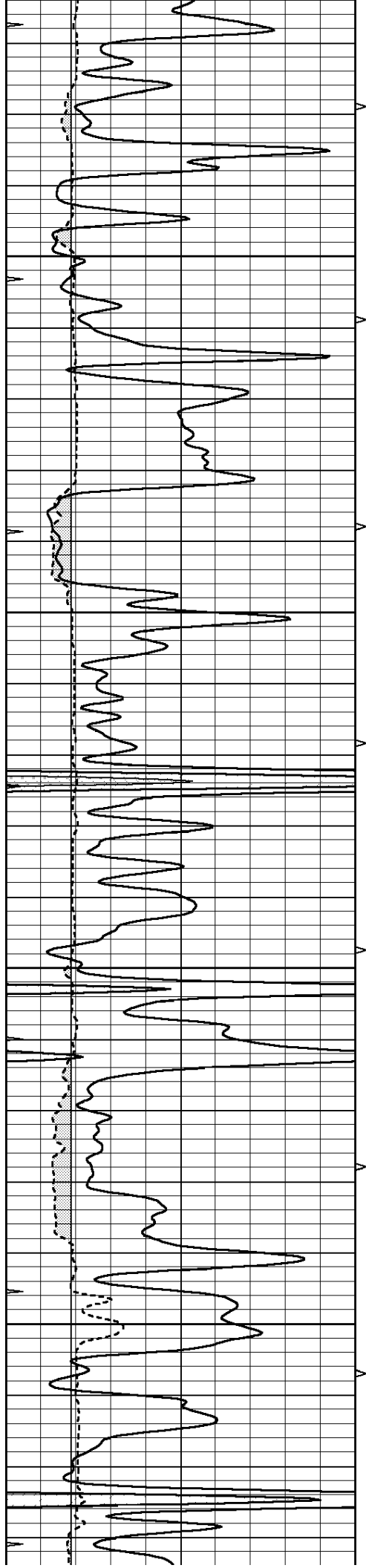
4250

4300

4350

4400



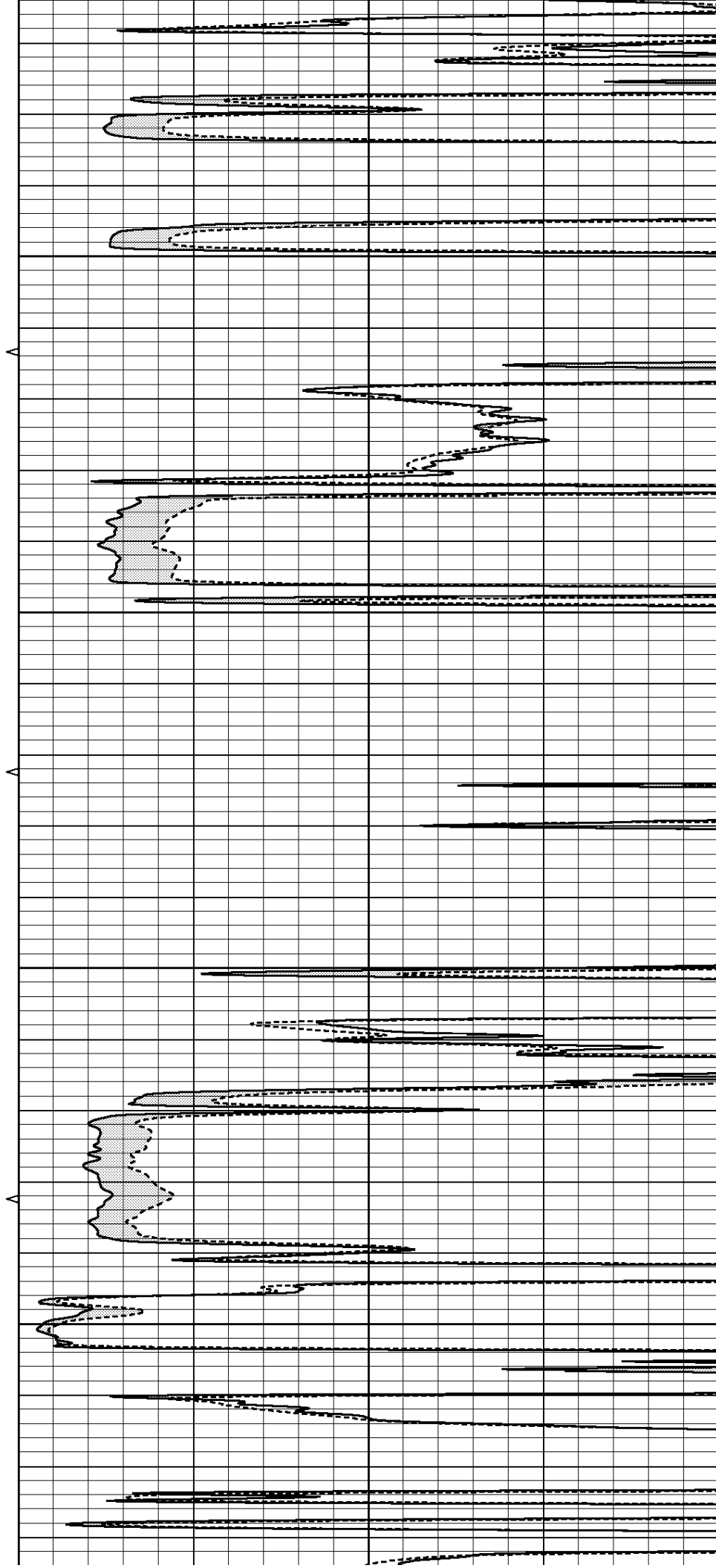


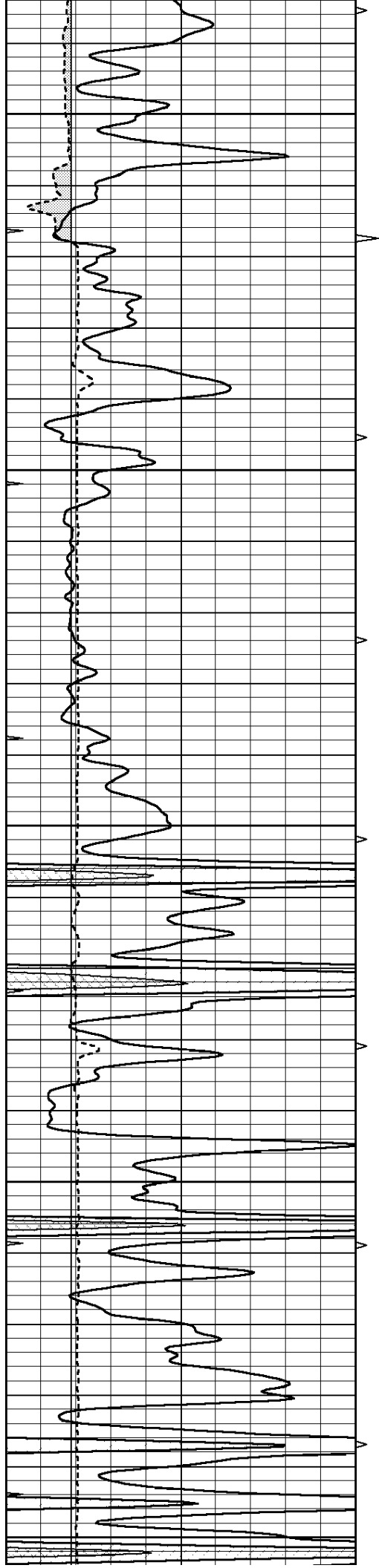
4450

4500

4550

4600





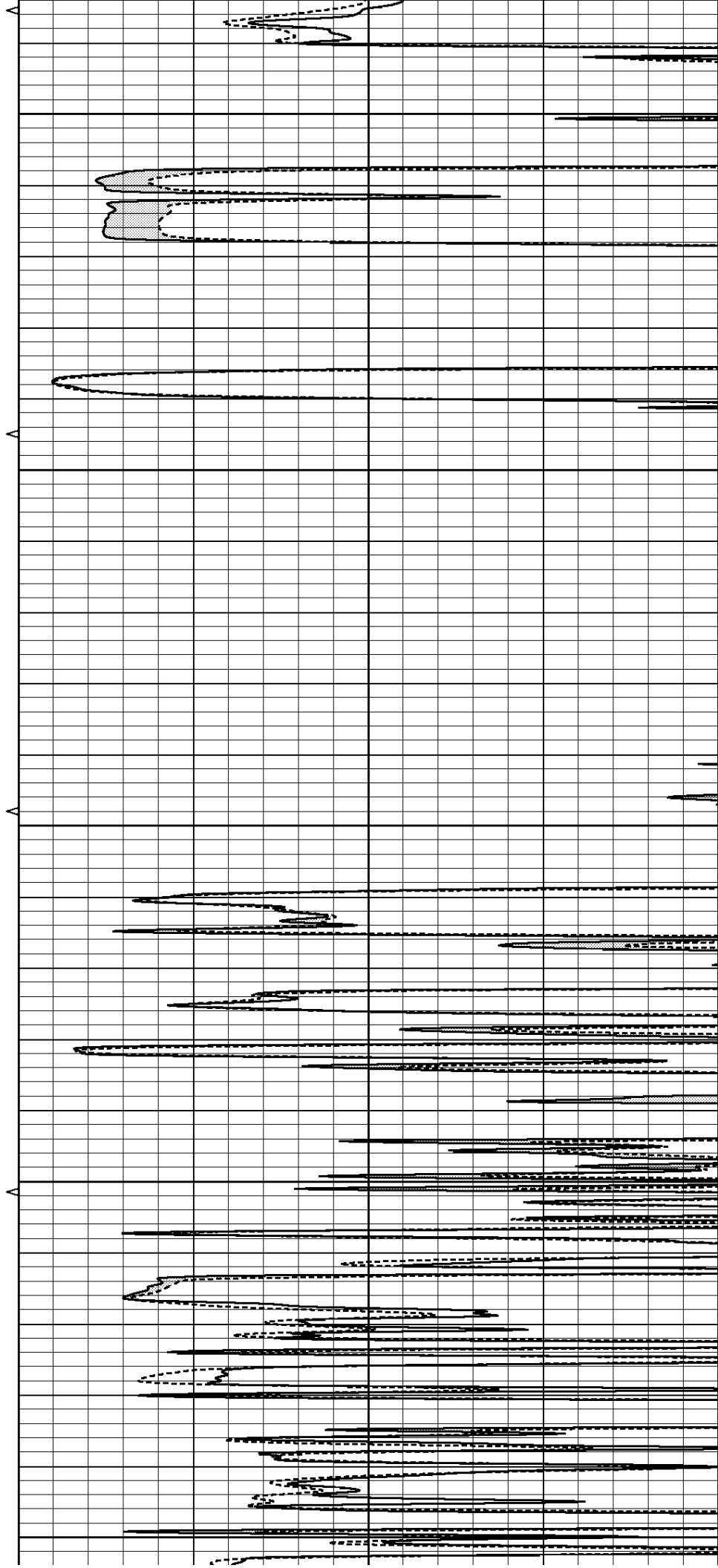
4650

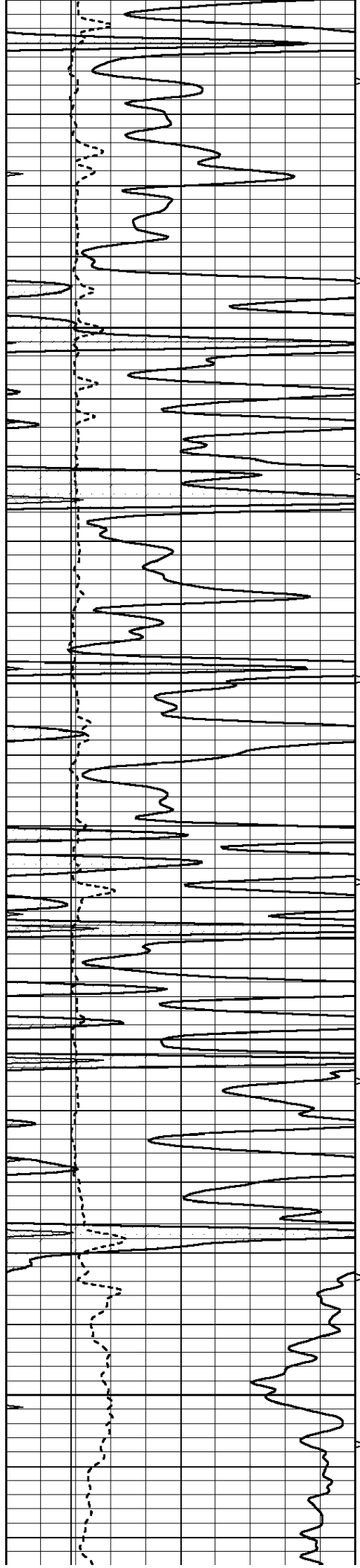
4700

4750

4800

4850



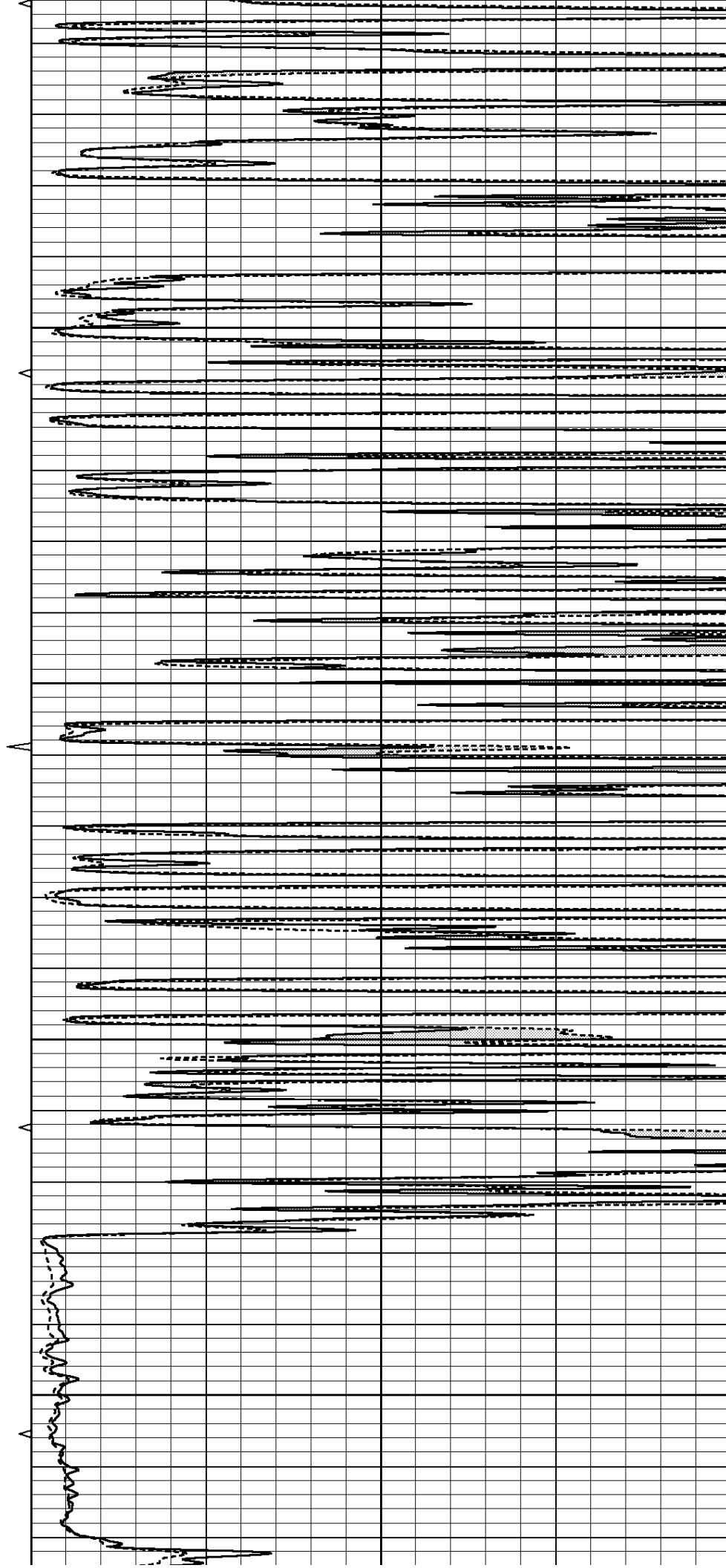


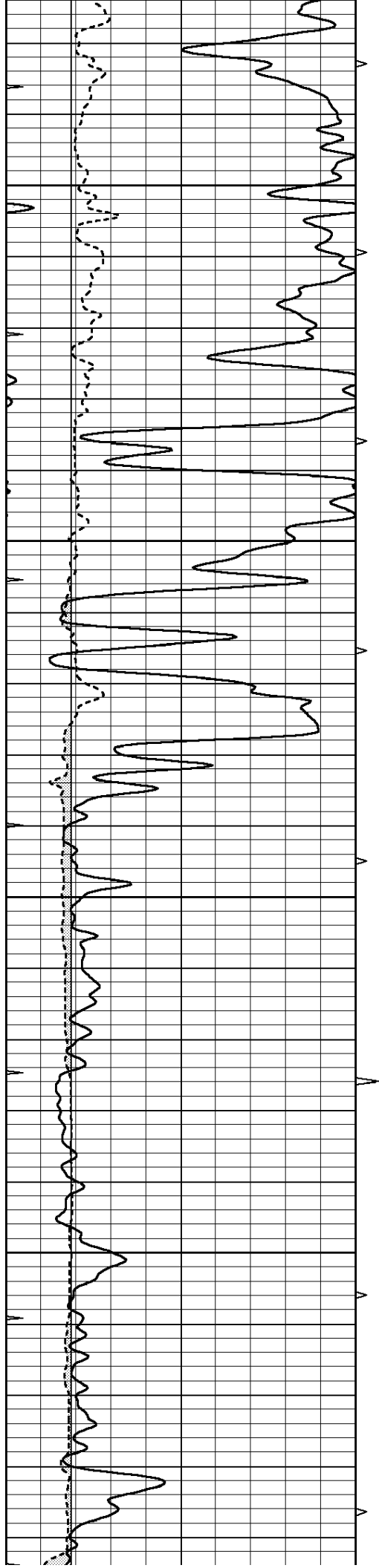
4900

4950

5000

5050



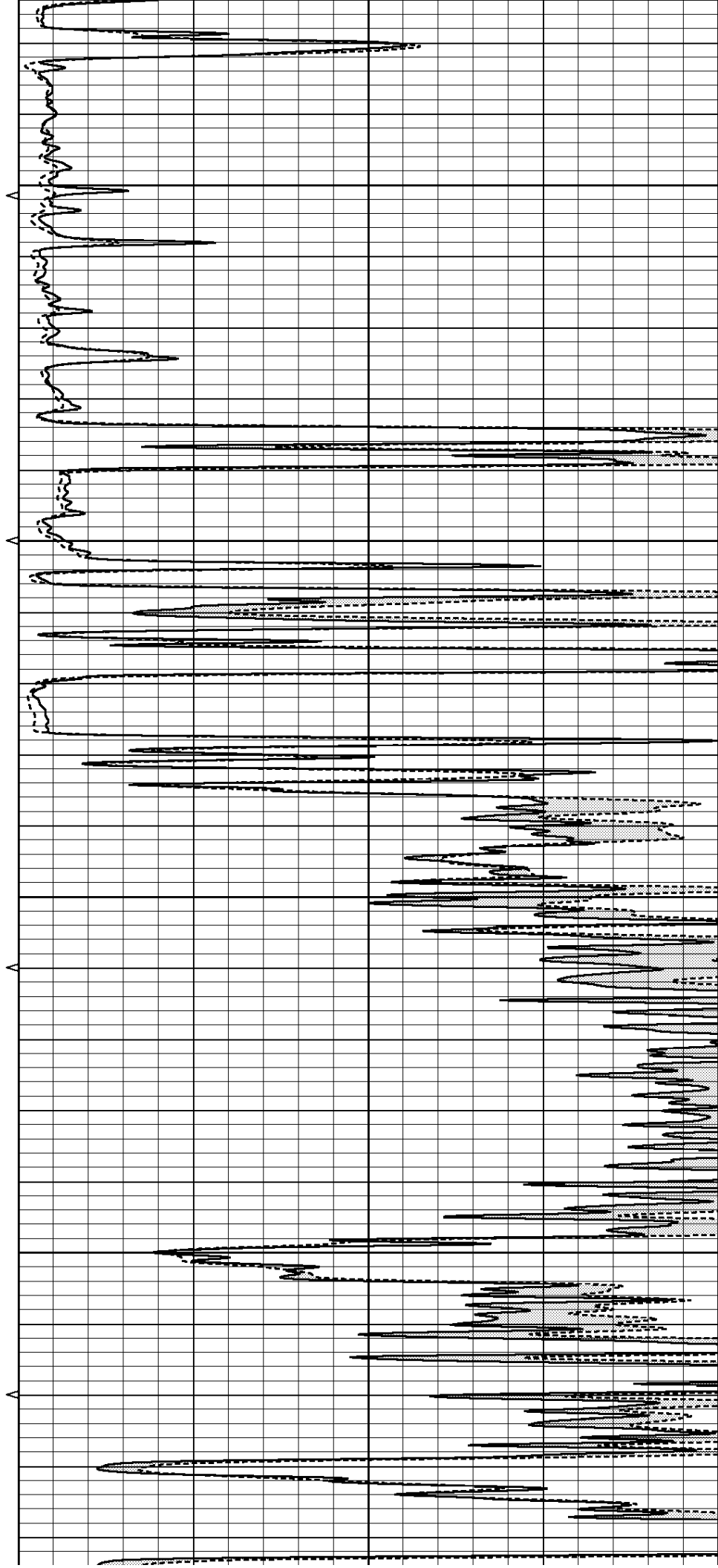


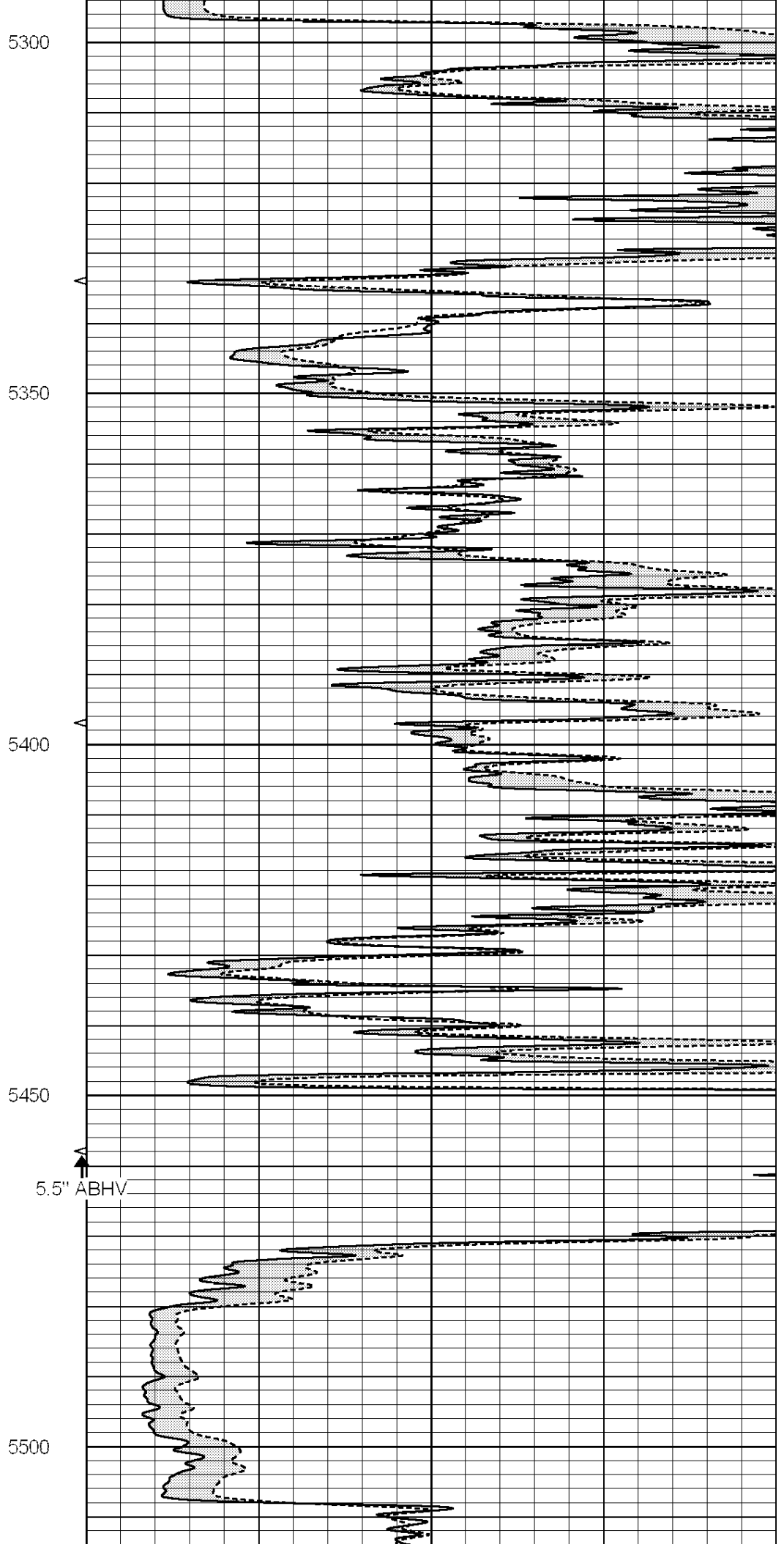
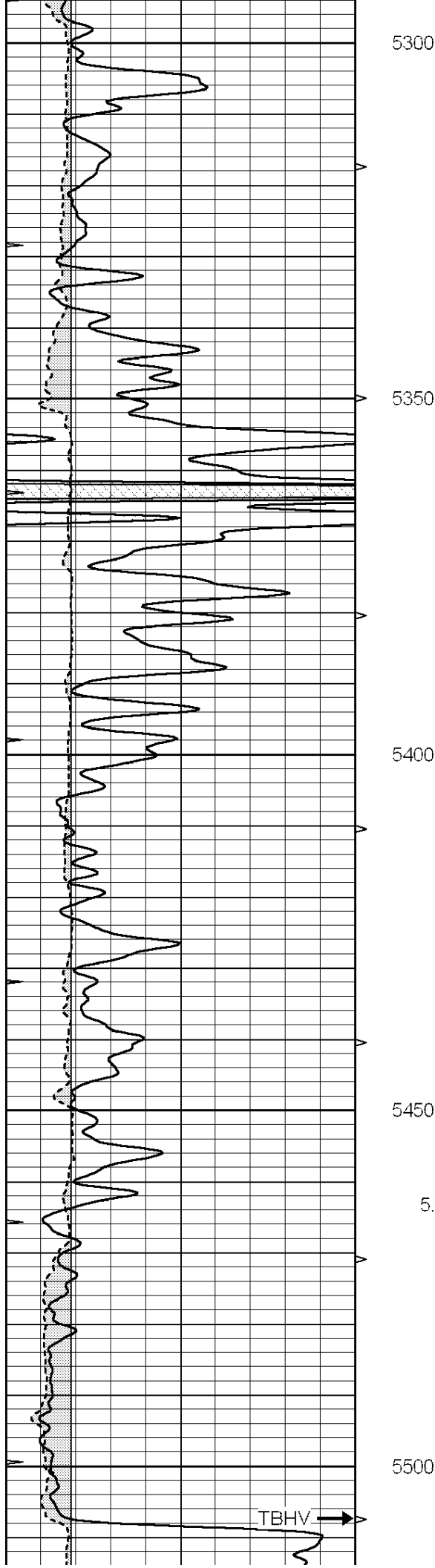
5100

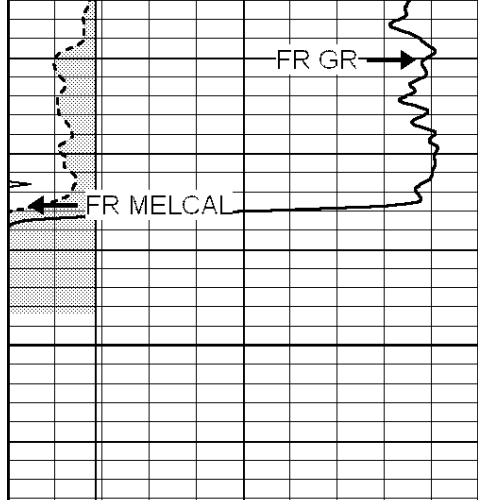
5150

5200

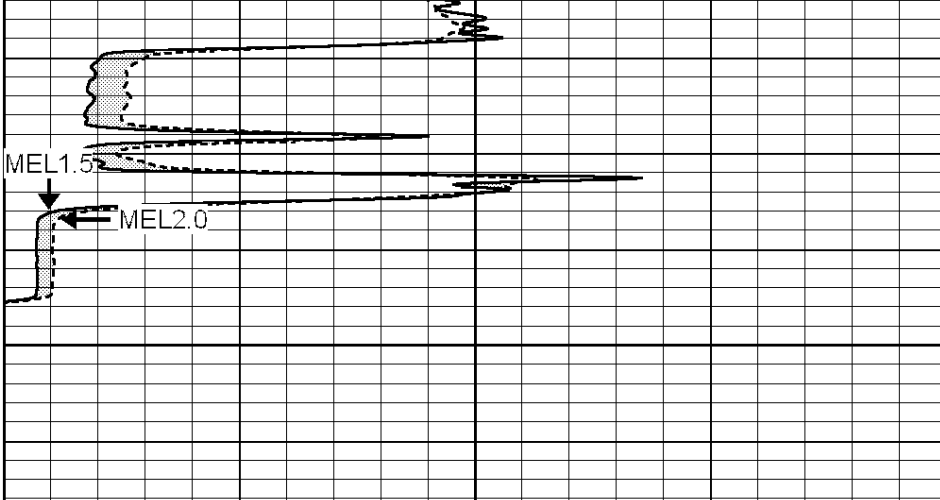
5250







5550
LTD 5558



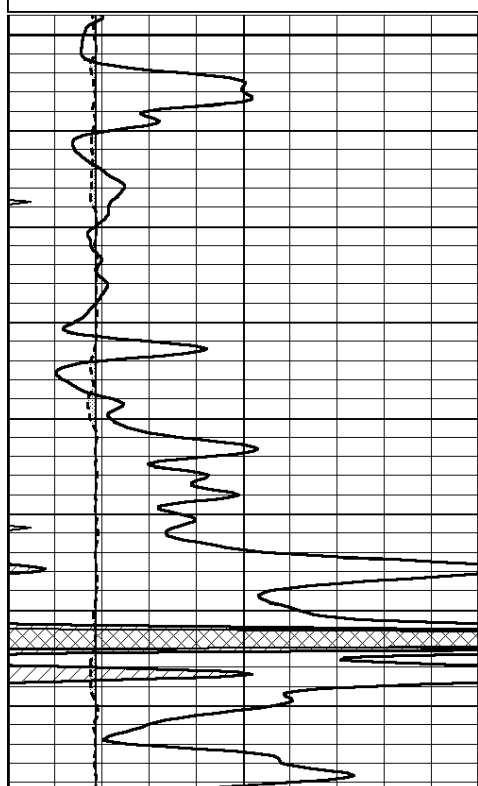
0	GAMMA RAY (GAPI)	150	ABHV	0	MEL1.5 (Ohm-m)	40
6	CALIPER (in)	16	10 (ft3)	0	MEL2.0 (Ohm-m)	40
0	MINMK	20	TBHV			
			0 (ft3)	10		



REPEAT SECTION

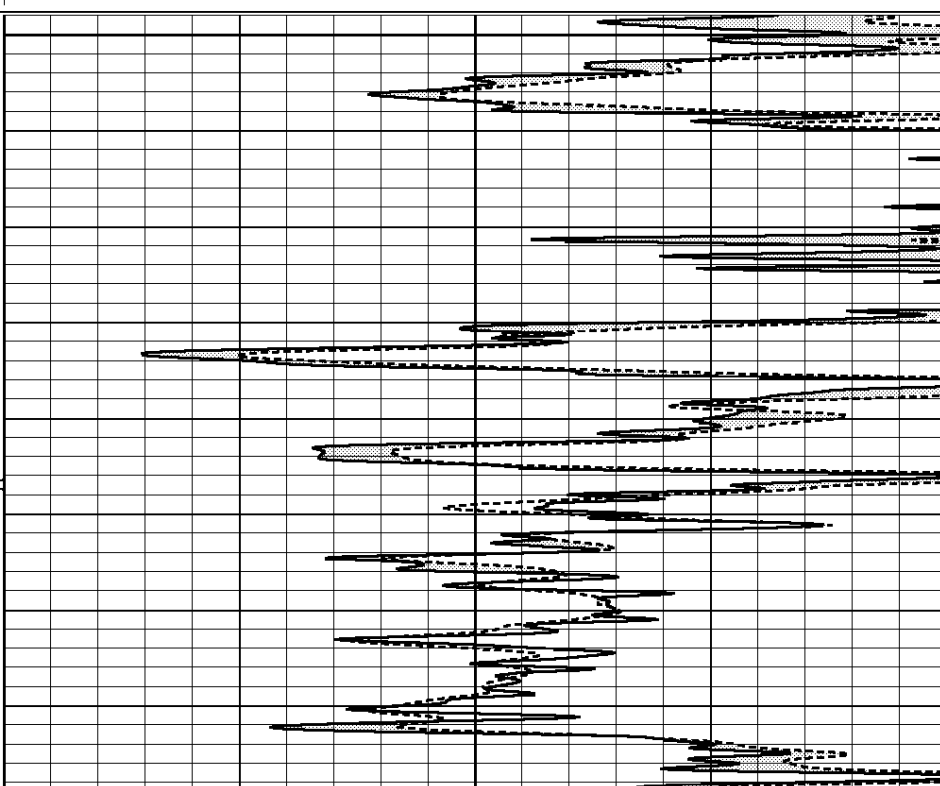
Database File: 011179pe.db
Dataset Pathname: pass5.3
Presentation Format: micro
Dataset Creation: Sun Jun 30 15:13:07 2013
Charted by: Depth in Feet scaled 1:240

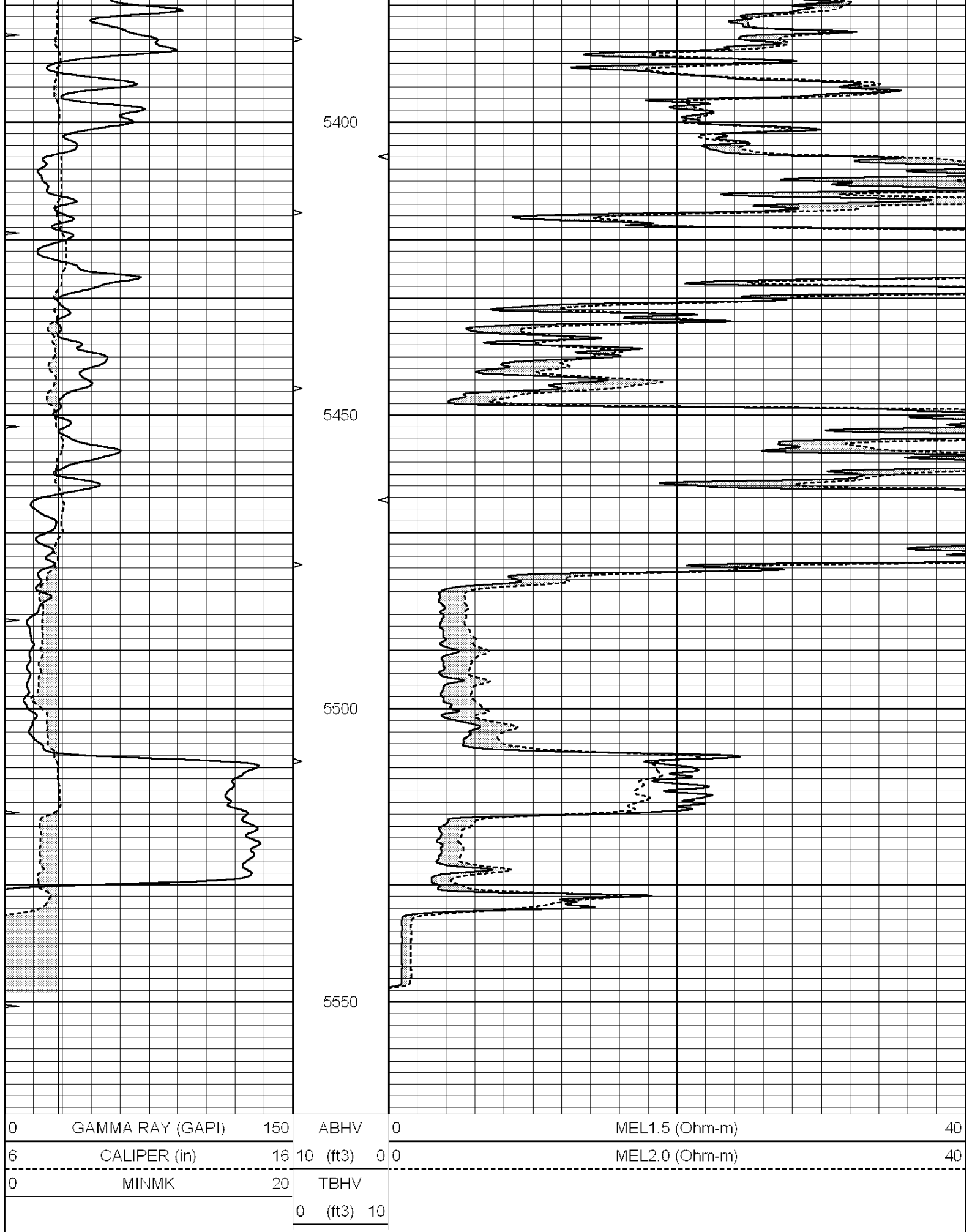
0	GAMMA RAY (GAPI)	150	ABHV	0	MEL1.5 (Ohm-m)	40
6	CALIPER (in)	16	10 (ft3)	0	MEL2.0 (Ohm-m)	40
0	MINMK	20	TBHV			
			0 (ft3)	10		



5300

5350





Database File: 011179pe.db
Dataset Pathname: pass6.6
Dataset Creation: Sun Jun 30 15:09:46 2013

MICRO Calibration Report

Serial Number: MICRO5
Tool Model: PROBE
Performed: Tue May 28 13:04:49 2013

Caliper Calibration: Gain=3.605 Offset=-6.802

	Low Cal	High Cal
References	8.000	15.000
Readings	4.106	6.048

1.5" Calibration: Gain=42.000 Offset=-1.000

	Low Cal	High Cal
References	0.000	20.000
Readings	0.015	1.005

2" Calibration: Gain=54.000 Offset=-1.600

	Low Cal	High Cal
References	0.000	20.000
Readings	0.009	0.910

Gamma Ray Calibration Report

Serial Number: GR3
Tool Model: OPEN
Performed: Wed Jun 26 23:43:33 2013

Calibrator Value: 200.0 GAPI

Background Reading:	3.0	cps
Calibrator Reading:	186.0	cps
Sensitivity:	2.0000	GAPI/cps