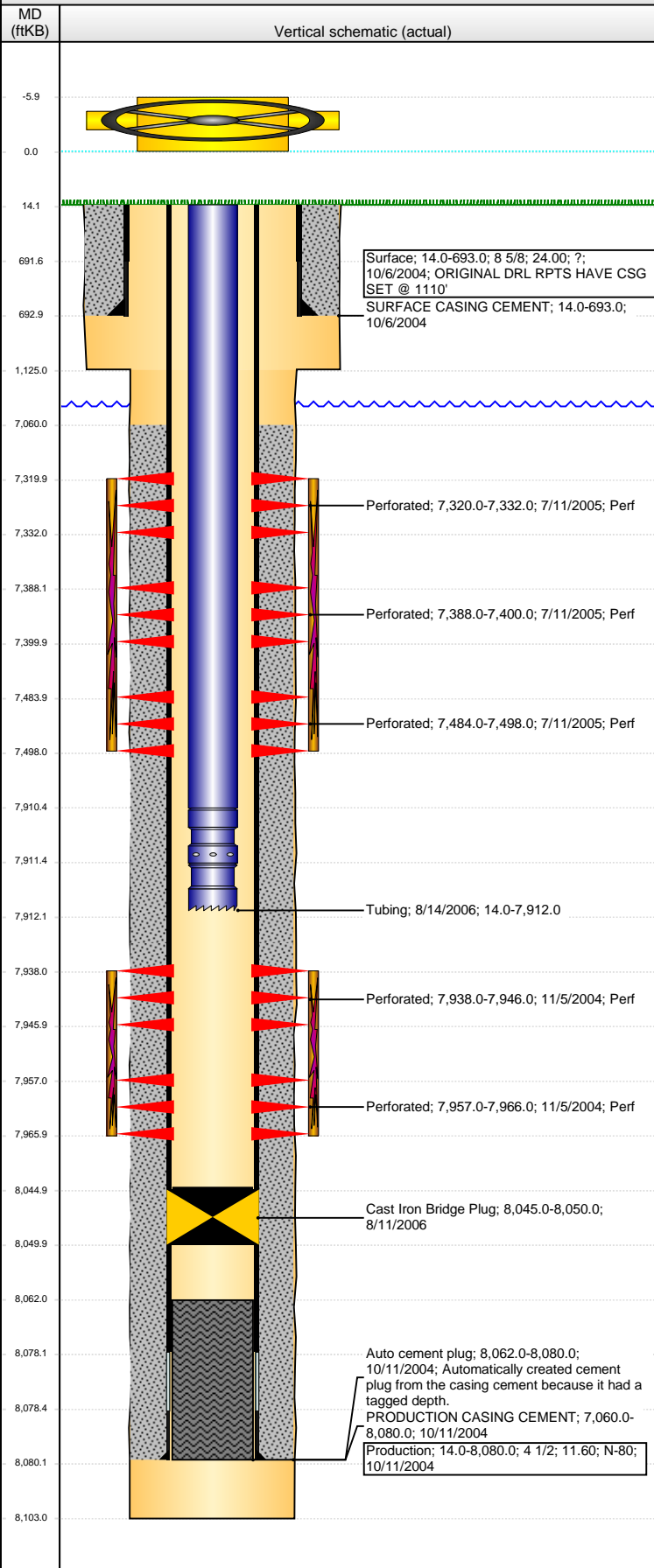


Well Name: AMATO 11-01

VERTICAL - ORIGINAL HOLE, 8/21/2013 12:38:34 PM



Well Header

API	Business Unit	District	Well Config
05-123-22411	WATTENBERG	15	VERTICAL
Original KB Elevation (ft)	KB - GL / MSL (ftKB)	Spud Date	P & A Date
5,064.00	14.00	10/5/2004	

Comment

ORIGINAL DRL RPTS HAVE CSG SET @ 1110'

Directions To Well

Congressional Location

Quarter 1	Quarter 2	Quarter 3	Quarter 4	Section	Township	Twnshp N...	Range	Rng E/W Dir
		NW	NW	1	1	N	66	W

Bottom Hole Location

North-South Distance (ft)	From N or S Line	East-West Distance (ft)	From E or W Line

Plug Back Total Depths

Date	Depth (ftKB)	Method	Com
10/15/2004	8,062.0	CASED HOLE LOG	DEPTH LOGGER ON CBL
8/11/2006	8,045.0	TAG	PUSH THE PLUG DOWN

Wellbore Sections

Section Des	Size (in)	Act Top (ftKB)	Act Btm (ftKB)
SURFACE	12 1/4	14.0	1,125.0
PRODUCTION	7 7/8	1,125.0	8,103.0

Zone Statuses

Zone Name	Status Date	Status	Job
J SAND	11/19/2004	PR	DRILLING/COMPLETION - ORIGINAL, 10/5/2004 00:00
J SAND	7/11/2005	SI	RECOMPLETION, 7/9/2005 00:00
J SAND	8/16/2006	PR	COMMINGLE ZONES, 8/10/2006 00:00
CODELL	7/17/2005	PR	RECOMPLETION, 7/9/2005 00:00
CODELL	8/16/2006	PR	COMMINGLE ZONES, 8/10/2006 00:00
NIOBRARA	7/17/2005	PR	RECOMPLETION, 7/9/2005 00:00
NIOBRARA	8/16/2006	PR	COMMINGLE ZONES, 8/10/2006 00:00

Casing Strings

Surface, 693.0ftKB

Casing Description	Run Date	OD (in)	Wt/Len (l...)	Grade	Top (ftKB)	MD (ftKB)
Surface	10/6/2004	8 5/8	24.00	?	14.0	693.0

Production, 8,080.0ftKB

Casing Description	Run Date	OD (in)	Wt/Len (l...)	Grade	Top (ftKB)	MD (ftKB)
Production	10/11/2004	4 1/2	11.60	N-80	14.0	8,080.0

Cement

Description	Top Depth (ftKB)	Bottom Depth (ftKB)
SURFACE CASING CEMENT	14.0	693.0
Description	Top Depth (ftKB)	Bottom Depth (ftKB)
PRODUCTION CASING CEMENT	7,060.0	8,080.0

Tubing Components

Item Des	OD (in)	Wt (lb/ft)	Grade	Jts	Len (ft)	Btm (ftKB)	Btm (TVD) (ftKB)
EUE 8rd Tubing	2 3/8	4.70	J-55	249	7,896.35	7,910.4	
Seal Nipple	2 3/8			1	1.10	7,911.5	
Notched collar	2 3/8			1	0.55	7,912.0	

Perforation Data

Zone	Bnch/St g	Entered Shot Total	Top (ftKB)	Btm (ftKB)	Date
NIOBRARA, ORIGINAL HOLE		48	7,320.00	7,332.00	7/11/2005
NIOBRARA, ORIGINAL HOLE		48	7,388.00	7,400.00	7/11/2005
CODELL, ORIGINAL HOLE		56	7,484.00	7,498.00	7/11/2005
J SAND, ORIGINAL HOLE		32	7,938.00	7,946.00	11/5/2004
J SAND, ORIGINAL HOLE		36	7,957.00	7,966.00	11/5/2004

Stimulations & Treatments

Date	Zone	Primary Job Type
11/8/2004	J SAND, ORIGINAL HOLE	DRILLING/COMPLETION - ORIGINAL
Technical Result	Tech Result Details	Tech Result Note

Comment

Well Name: AMATO 11-01

VERTICAL - ORIGINAL HOLE, 8/21/2013 12:38:37 PM

Stimulations & Treatments

Date 7/12/2005	Zone NIOBRARA-CODELL, ORIGINAL HOLE	Primary Job Type RECOMPLETION
Technical Result	Tech Result Details	Tech Result Note

Comment
LIMITED ENTRY FRAC

Other In Hole

Run Date	Des	OD (in)	Top (ftKB)	Btm (ftKB)
8/11/2006	Cast Iron Bridge Plug	4 1/2	8,045.0	8,050.0

Logs

Date	Type	Top (ftKB)	Btm (ftKB)
10/10/2004	TRIPLE COMBO	1,110.0	8,103.0
10/15/2004	CBL/CCL/GR	6,952.0	8,057.0
5/18/2013	GYRO	14.0	7,850.0

