

T10N, R58W, 6th P.M.

2010 UELS Alum. Cap,
Flush W/Ground
Lat: 40.816906°
Long: 103.841850°

Target Bottom Hole

2012 UELS Alum. Cap,
0.1' High, PLS 28285
Lat: 40.816942°
Long: 103.832336°

2010 UELS Alum.
Cap, 0.3' High
Lat: 40.816975°
Long: 103.822819°

WHITING OIL & GAS CORP.

Well location, RAZOR FEDERAL #26L-2301A
(SURFACE LOCATION), located as shown in the NW
1/4 SW 1/4 of Section 26, T10N, R58W, 6th P.M.,
Weld County, Colorado.

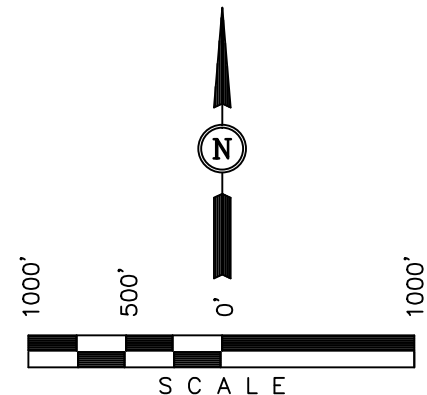
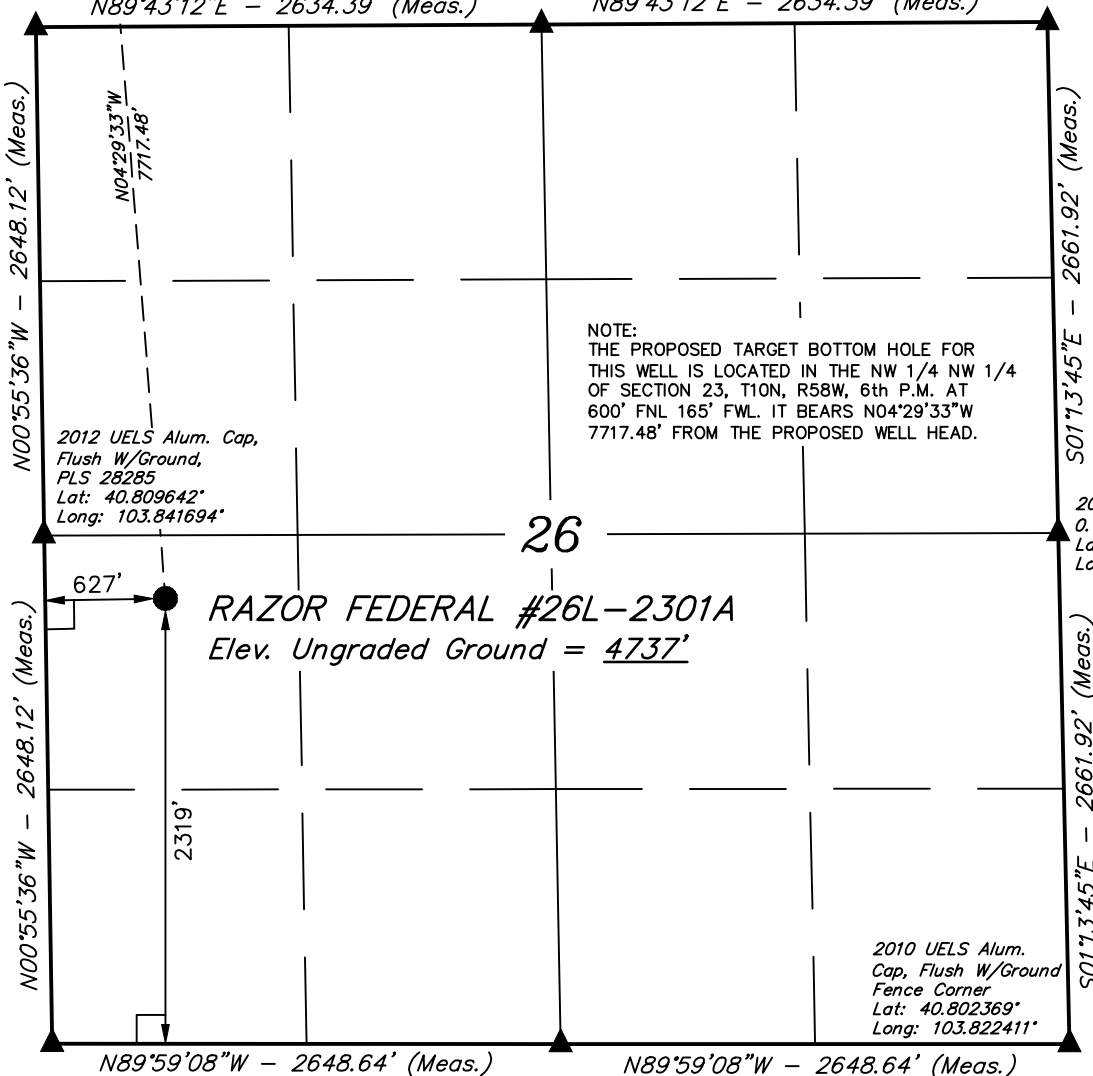
BASIS OF ELEVATION

SPOT ELEVATION LOCATED AT THE NORTHEAST CORNER OF
SECTION 15, T9N, R58W, 6th P.M. TAKEN FROM THE
GATEHOOK SPRING, QUADRANGLE, COLORADO, WELD COUNTY,
7.5 MINUTE QUAD (TOPOGRAPHIC MAP) PUBLISHED BY THE
UNITED STATES DEPARTMENT OF THE INTERIOR, GEOLOGICAL
SURVEY. SAID ELEVATION IS MARKED AS BEING 4679 FEET.

BASIS OF BEARINGS

BASIS OF BEARINGS IS A G.P.S. OBSERVATION.

NOTE:
THE PROPOSED TARGET BOTTOM HOLE FOR
THIS WELL IS LOCATED IN THE NW 1/4 NW 1/4
OF SECTION 23, T10N, R58W, 6th P.M. AT
600' FNL 165' FWL. IT BEARS N04°29'33"W
7717.48' FROM THE PROPOSED WELL HEAD.



CERTIFICATE

THIS IS TO CERTIFY THAT THE ABOVE MAP WAS PREPARED FROM
FIELD NOTES OF ACTUAL SURVEYS MADE BY ME OR UNDER MY
SUPERVISION AND THAT THE SAME ARE TRUE AND CORRECT TO THE
BEST OF MY KNOWLEDGE AND BELIEF.

REGISTERED LAND SURVEYOR
REGISTRATION NO. 17492
STATE OF COLORADO

REVISED: 06-29-13 J.S.
REVISED: 04-15-13 J.S.

UINTAH ENGINEERING & LAND SURVEYING
85 SOUTH 200 EAST - VERNAL, UTAH 84078
(435) 789-1017

2010 UELS Alum. Cap,
Flush W/Ground,
E/W Fence
Lat: 40.802375°
Long: 103.841542°

2012 Alum. Cap,
Flush W/Ground
Lat: 40.802372°
Long: 103.831975°

2010 UELS Alum.
Cap, Flush W/Ground
Fence Corner
Lat: 40.802369°
Long: 103.822411°

LEGEND:

- └─┘ = 90° SYMBOL
- = PROPOSED WELL HEAD.
- ▲ = SECTION CORNERS LOCATED.

PDOP = 1.4

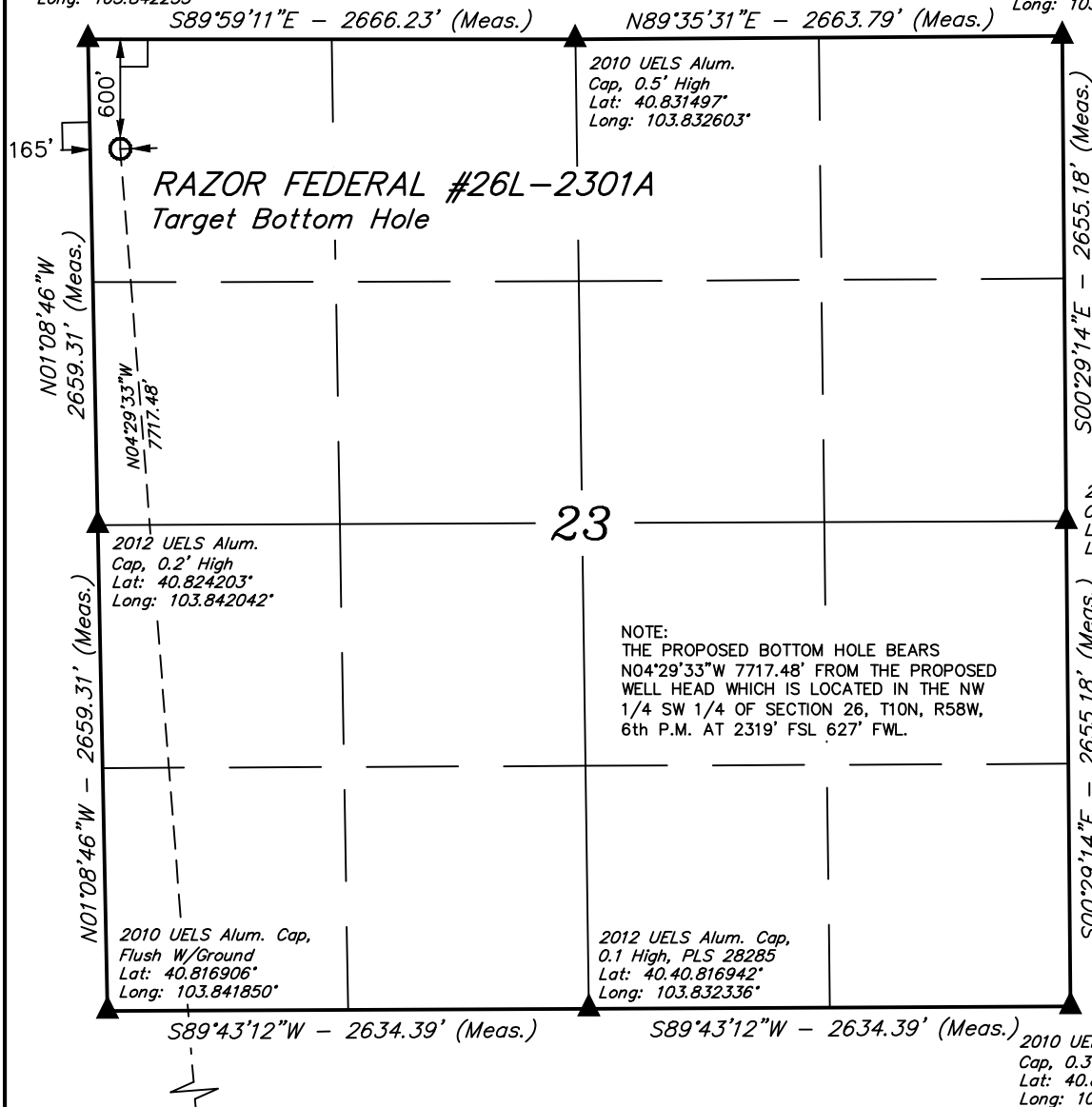
NAD 83 (SURFACE LOCATION)
LATITUDE = 40°48'31.46" (40.808739)
LONGITUDE = 103°50'21.88" (103.839411)
NAD 27 (SURFACE LOCATION)
LATITUDE = 40°48'31.51" (40.808753)
LONGITUDE = 103°50'20.07" (103.838908)

SCALE 1" = 1000'	DATE SURVEYED: 03-14-13	DATE DRAWN: 03-19-13
PARTY J.H. C.M. H.K.W.	REFERENCES G.L.O. PLAT	
WEATHER COOL	FILE WHITING OIL & GAS CORP.	

T10N, R58W, 6th P.M.

2010 UELS Alum. Cap,
0.5' Below Ground
Lat: 40.831497°
Long: 103.842233°

Stone
Lat: 40.831547°
Long: 103.822978°



LEGEND:

- └─┘ = 90° SYMBOL
- = PROPOSED WELL HEAD.
- ▲ = SECTION CORNERS LOCATED.

NAD 83 (TARGET BOTTOM HOLE)
LATITUDE = 40°49'47.47" (40.829853)
LONGITUDE = 103°50'29.74" (103.841594)
NAD 27 (TARGET BOTTOM HOLE)
LATITUDE = 40°49'47.52" (40.829867)
LONGITUDE = 103°50'27.93" (103.841092)

WHITING OIL & GAS CORP.

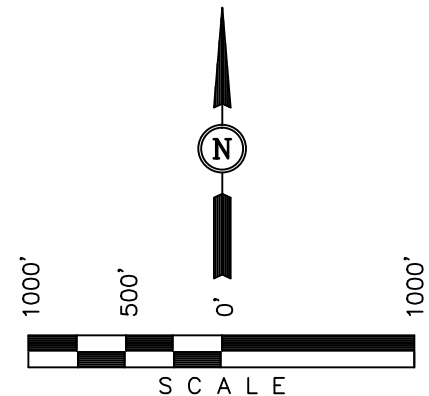
Well location, RAZOR FEDERAL #26L-2301A
(TARGET BOTTOM HOLE), located as shown in the
NW 1/4 NW 1/4 of Section 23, T10N, R58W, 6th
P.M., Weld County, Colorado.

BASIS OF ELEVATION

SPOT ELEVATION LOCATED AT THE NORTHEAST CORNER OF
SECTION 15, T9N, R58W, 6th P.M. TAKEN FROM THE
GATEHOOK SPRING, QUADRANGLE, COLORADO, WELD COUNTY,
7.5 MINUTE QUAD (TOPOGRAPHIC MAP) PUBLISHED BY THE
UNITED STATES DEPARTMENT OF THE INTERIOR, GEOLOGICAL
SURVEY. SAID ELEVATION IS MARKED AS BEING 4679 FEET.

BASIS OF BEARINGS

BASIS OF BEARINGS IS A G.P.S. OBSERVATION.



CERTIFICATE

THIS IS TO CERTIFY THAT THE ABOVE MAP WAS PREPARED FROM
FIELD NOTES OF ACTUAL SURVEYS MADE BY ME OR UNDER MY
SUPERVISION AND THAT THE SAME ARE TRUE AND CORRECT TO THE
BEST OF MY KNOWLEDGE AND BELIEF.

REGISTERED LAND SURVEYOR
REGISTRATION NO. 17492
STATE OF COLORADO

REVISED: 04-15-13 J.S.

UINTAH ENGINEERING & LAND SURVEYING
85 SOUTH 200 EAST - VERNAL, UTAH 84078
(435) 789-1017

SCALE 1" = 1000'	DATE SURVEYED: 03-14-13	DATE DRAWN: 03-19-13
PARTY J.H. C.M. H.K.W.	REFERENCES G.L.O. PLAT	
WEATHER COOL	FILE	WHITING OIL & GAS CORP.