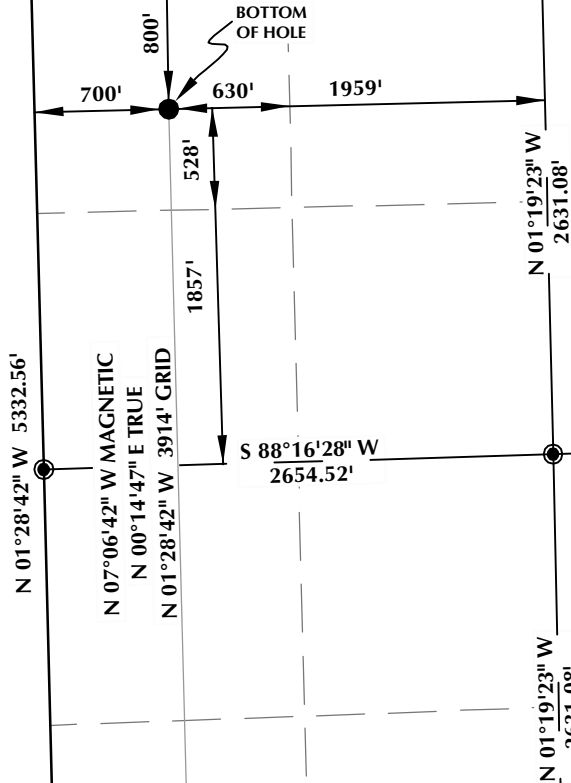


T17S, R48W

NW. COR.
SEC. 11, T17S, R48W
SET ALUM. CAP
L.S. NO. 38305

NE. COR.
SEC. 11, T17S, R48W
SET ALUM. CAP
L.S. NO. 38305

S 89°01'58" W 5323.45'



SURFACE LOCATION
GROUND ELEVATION= 4233.3'
NAD 83
LATITUDE= 38.586836°
LONGITUDE= -102.765358°

LATITUDE= 38°35'12.611"
LONGITUDE= -102°45'55.291"

BOTTOM HOLE LOCATION
NAD 83
LATITUDE= 38.597582°
LONGITUDE= -102.765311°

LATITUDE= 38°35'51.296"
LONGITUDE= -102°45'55.119"

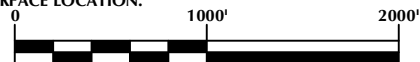
11

LINCOLN 1748-11-11-H
SURFACE LOCATION

S 87°30'43" W 5295.56'

NOTES:

- ▲ INDICATES FOUND SECTION CORNER
- INDICATES CALCULATED CORNER
- ELEVATION BASED ON NAVD88 (GEOID09)
- BASIS OF BEARING DERIVED FROM COLORADO COORDINATE SYSTEM 1983 SOUTH ZONE UNLESS OTHERWISE NOTED.
- ALL MEASURED DISTANCES ARE GRID. COMBINED SCALE FACTOR: .99977696
- OPERATOR: ROB WILSON / PDOP = 2.0
- SURFACE USE OF LOCATION IS RANGELAND.
- SEE ADDENDUM TO WELL LOCATION CERTIFICATE FOR EXISTING IMPROVEMENTS WITHIN 400' OF THE WELL PAD.
- WELL FOOTAGES ARE MEASURED AT RIGHT ANGLES TO THE SECTION LINES.
- THE BOTTOM OF HOLE BEARS N01°28'42"W 3914' FROM THE SURFACE LOCATION.



SCALE: 1" = 1000'

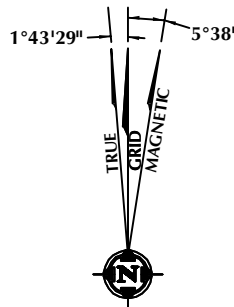
CERTIFICATE OF SURVEYOR:

THIS IS TO CERTIFY THAT THE ABOVE PLAT WAS PREPARED FROM FIELD NOTES OF ACTUAL SURVEY MADE BY ME OR UNDER MY SUPERVISION AND THAT THE SAME ARE TRUE AND CORRECT TO THE BEST OF MY KNOWLEDGE AND BELIEF. THIS CERTIFICATE DOES NOT REPRESENT A LAND SURVEY PLAT OR IMPROVEMENT SURVEY PLAT AS DEFINED BY C.S. 38-51-102 AND CANNOT BE RELIED UPON TO DETERMINE OWNERSHIP.

Benjamin J. Reenders
PROFESSIONAL LAND SURVEYOR

BENJAMIN J. REENDERS
PROFESSIONAL LAND SURVEYOR
COLORADO REGISTRATION NUMBER 48306 7/24/13

NOTICE:
ACCORDING TO COLORADO STATE LAW YOU MUST COMMENCE ANY LEGAL ACTION BASED UPON ANY DEFECT IN THIS SURVEY WITHIN THREE YEARS AFTER YOU FIRST DISCOVER SUCH DEFECT. IN NO EVENT MAY ANY ACTION BASED UPON ANY DEFECT IN THIS SURVEY BE COMMENCED MORE THAN TEN YEARS FROM THE DATE ON THE CERTIFICATION SHOWN HEREON.

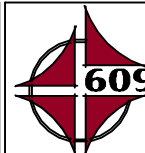


NOTE:
MAGNETIC NORTH IS CURRENT AS OF 7/23/2013.
MAGNETIC NORTH CHANGES WEST 0°08' PER YEAR.

WELL PAD - LINCOLN 1748-11-14

LINCOLN 1748-11-11-H
WELL LOCATION CERTIFICATE
600' FSL & 700' FWL SWSW (SURFACE)
800' FNL & 700' FWL NWNW (BOTTOM)
LOCATED IN SECTION 11
T17S, R48W, 6TH P.M.
KIOWA COUNTY, COLORADO

Anadarko E&P
Onshore LLC
1099 18th Street
Denver, Colorado 80202



CONSULTING, LLC

SHERIDAN OFFICE
2155 North Main Street
Sheridan, Wyoming 82801
Phone 307-674-0609

LOVELAND OFFICE
1635 Foxtrail Drive, Suite 204
Loveland, Colorado 80538
Phone 970-776-4331

DRAFTED BY:	KGS	CHECKED BY:	BJR
DATE DRAFTED:	7/24/13	DATE SURVEYED:	7/17/13
REVISED:		FILE NAME:	13-54