

DATE: 08-08-12  
DRAWN BY: T.B.  
REVISED: 08-16-12  
REVISED: 09-24-12  
REVISED: 09-25-12  
REVISED: 09-28-12  
REVISED: 11-03-12  
REVISED: 05-17-13 J.G.G.  
REVISED: 06-06-13.

# Encana OIL & GAS (USA) INC.

## CONSTRUCTION LAYOUT FOR

WELL PAD C19 397  
SECTION 19, T3S, R97W, 6th P.M.  
NE 1/4 NW 1/4

60' 30' 0' 60'  
SCALE  
Sheet 3 of 10

### SWMP LEGEND:

ECB - EROSION CONTROL  
BLANKET  
Lsd - LEVEL SPREADER  
SCE - STABILIZED  
CONSTRUCTION  
ENTRANCE  
SedR - SEDIMENT  
RESERVOIR  
SL - SLASH  
ST - SEDIMENT TRAP  
TB - TOE BERM  
VB - VEGETATED BUFFER  
W - WATTLE

### LEGEND:

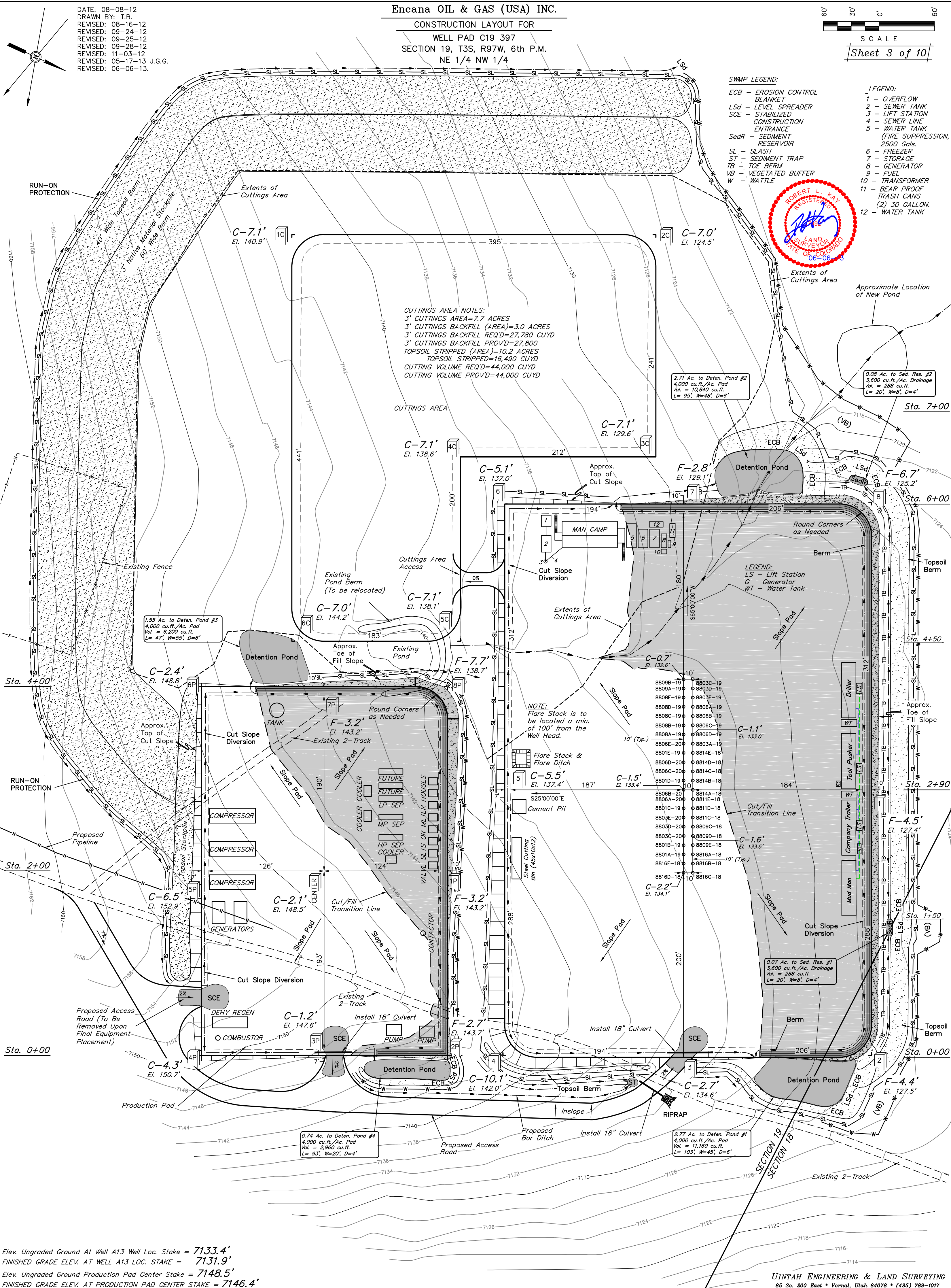
1 - OVERFLOW  
2 - SEWER TANK  
3 - LIFT STATION  
4 - SEWER LINE  
5 - WATER TANK  
(FIRE SUPPRESSION,  
2500 Gals.  
6 - FREEZER  
7 - STORAGE  
8 - GENERATOR  
9 - FUEL  
10 - TRANSFORMER  
11 - BEAR PROOF  
TRASH CANS  
(2) 30 GALLON.  
12 - WATER TANK



CUTTINGS AREA NOTES:  
3' CUTTINGS AREA=7.7 ACRES  
3' CUTTINGS BACKFILL (AREA)=3.0 ACRES  
3' CUTTINGS BACKFILL REQ'D=27,780 CUYD  
3' CUTTINGS BACKFILL PROVD=27,800  
TOPSOIL STRIPPED (AREA)=10.2 ACRES  
TOPSOIL STRIPPED=16,490 CUYD  
CUTTING VOLUME REQ'D=44,000 CUYD  
CUTTING VOLUME PROVD=44,000 CUYD

2.71 Ac. to Deten. Pond #2  
4,000 cu.ft./Ac. Pad  
Vol. = 10,840 cu.ft.  
L= 95', W=48', D=6'

0.08 Ac. to Sed. Res. #2  
3,600 cu.ft./Ac. Drainage  
Vol. = 288 cu.ft.  
L= 20', W=8', D=4'



Elev. Ungraded Ground At Well A13 Well Loc. Stake = 7133.4'  
FINISHED GRADE ELEV. AT WELL A13 LOC. STAKE = 7131.9'  
Elev. Ungraded Ground Production Pad Center Stake = 7148.5'  
FINISHED GRADE ELEV. AT PRODUCTION PAD CENTER STAKE = 7146.4'

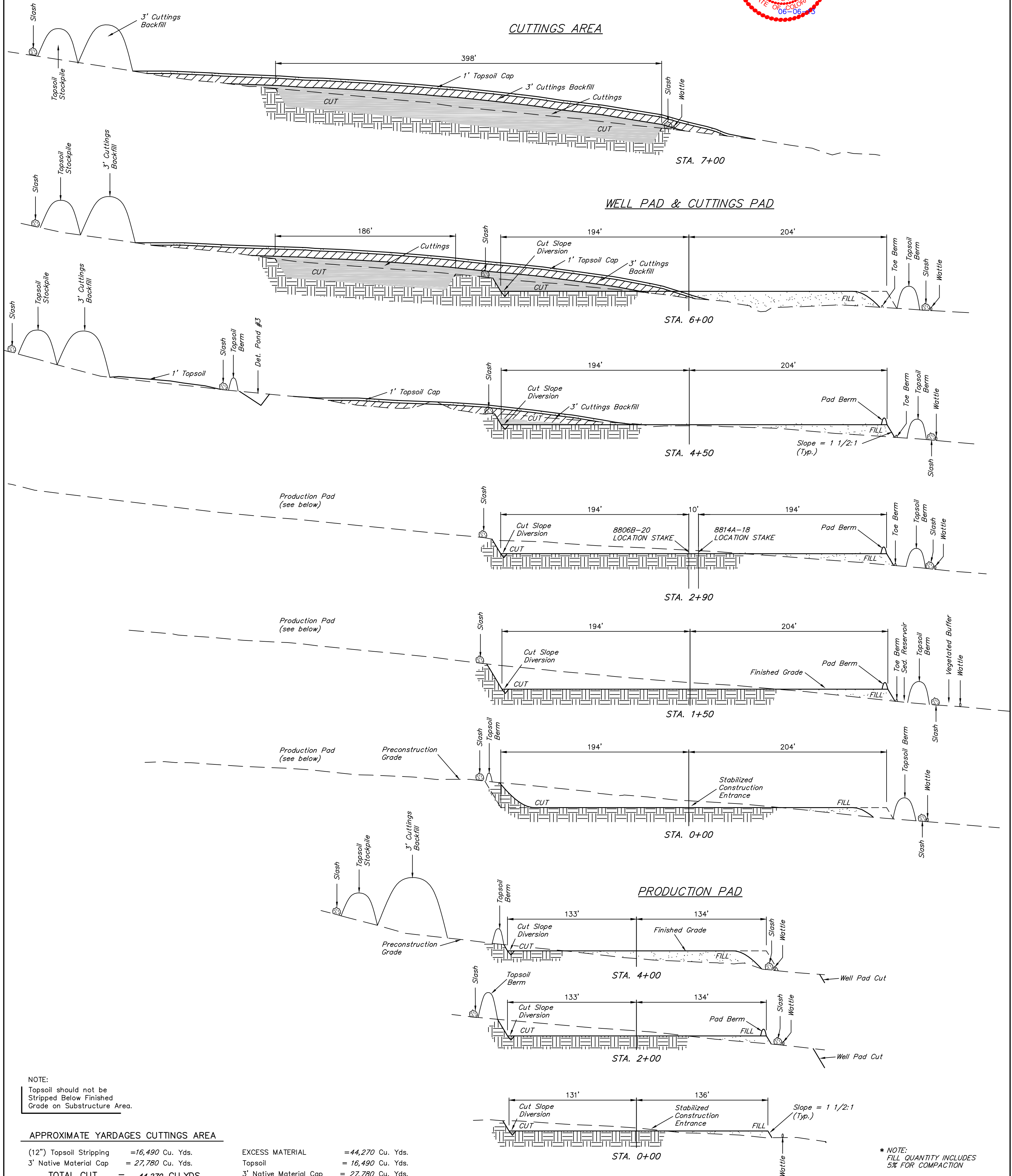


DATE: 08-08-12  
 DRAWN BY: T.B.  
 REVISED: 08-16-12  
 REVISED: 09-24-12  
 REVISED: 09-28-12  
 REVISED: 11-03-12  
 REVISED: 05-17-13 J.G.G.  
 REVISED: 06-06-13.

Encana OIL & GAS (USA) INC.  
 CONSTRUCTION LAYOUT CROSS SECTION FOR  
 WELL PAD C19 397  
 SECTION 19, T3S, R97W, 6th P.M.  
 NE 1/4 NW 1/4



Sheet 4 of 10



NOTE:  
 Topsoil should not be  
 Stripped Below Finished  
 Grade on Substructure Area.

APPROXIMATE YARDAGES CUTTINGS AREA

(12") Topsoil Stripping = 16,490 Cu. Yds.  
 3' Native Material Cap = 27,780 Cu. Yds.  
**TOTAL CUT = 44,270 CU.YDS.**  
**FILL = 0 CU.YDS.**

EXCESS MATERIAL = 44,270 Cu. Yds.  
 Topsoil = 16,490 Cu. Yds.  
 3' Native Material Cap = 27,780 Cu. Yds.  
**EXCESS UNBALANCE = 0 Cu. Yds.**  
 (After Interim Rehabilitation)

APPROXIMATE YARDAGES WELL PAD

(12") Topsoil Stripping = 9,420 Cu. Yds.  
 Remaining Location = 14,590 Cu. Yds.  
**TOTAL CUT = 24,010 CU.YDS.**  
**FILL = 14,590 CU.YDS.**

EXCESS MATERIAL = 9,420 Cu. Yds.  
 Topsoil = 9,420 Cu. Yds.  
**EXCESS UNBALANCE = 0 Cu. Yds.**  
 (After Interim Rehabilitation)

APPROXIMATE YARDAGES PRODUCTION PAD

(12") Topsoil Stripping = 4,250 Cu. Yds.  
 Remaining Location = 6,370 Cu. Yds.  
**TOTAL CUT = 10,620 CU.YDS.**  
**FILL = 6,370 CU.YDS.**

EXCESS MATERIAL = 4,250 Cu. Yds.  
 Topsoil = 4,250 Cu. Yds.  
**EXCESS UNBALANCE = 0 Cu. Yds.**  
 (After Interim Rehabilitation)

\* NOTE:  
 FILL QUANTITY INCLUDES  
 5% FOR COMPACTION



# Encana OIL & GAS (USA) INC.

## PRODUCTION SCHEMATIC FOR

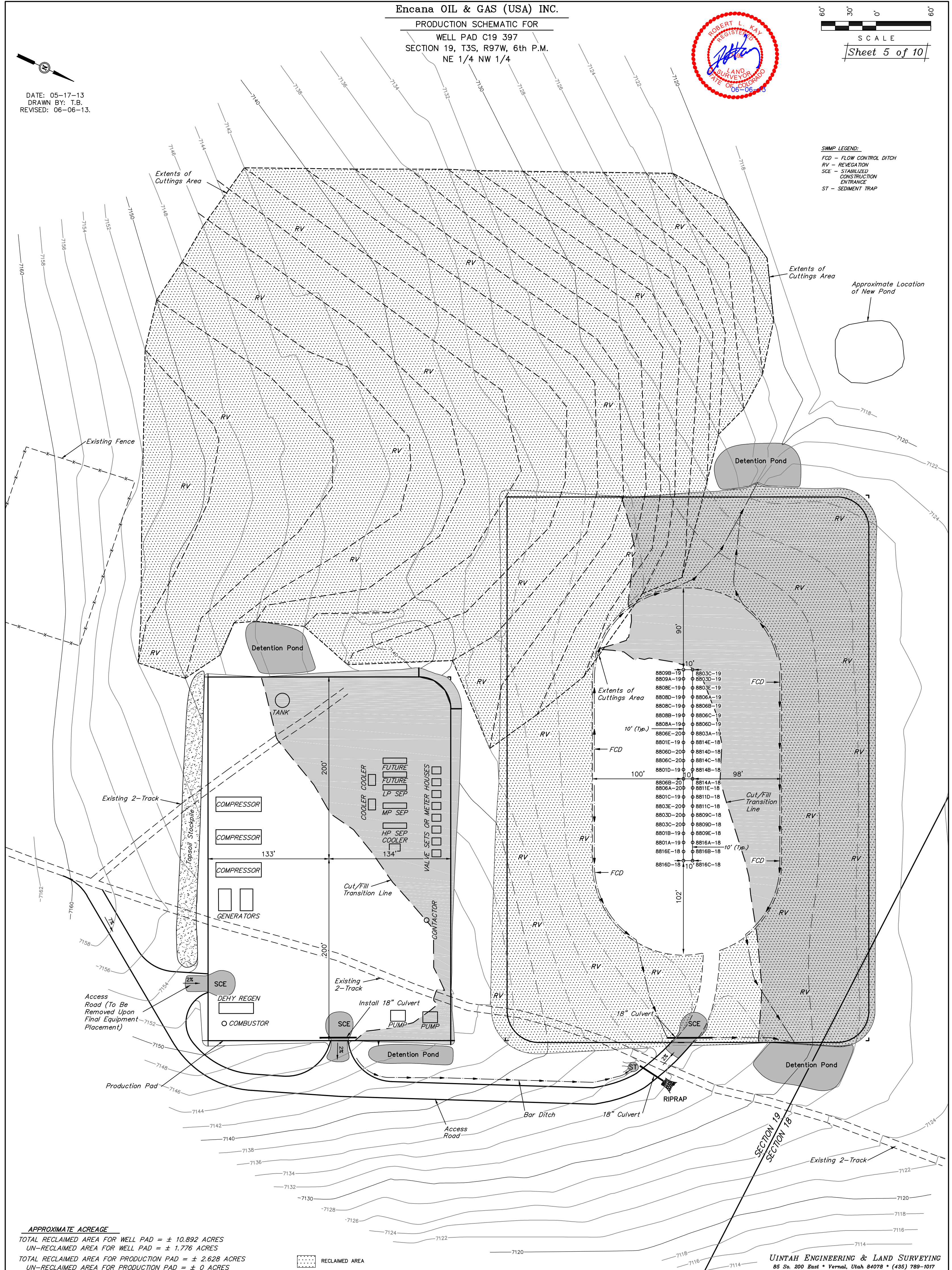
WELL PAD C19 397  
SECTION 19, T3S, R97W, 6th P.M.  
NE 1/4 NW 1/4



60' 30' 0' 60'  
SCALE  
Sheet 5 of 10

DATE: 05-17-13  
DRAWN BY: T.B.  
REVISED: 06-06-13.

**SWAMP LEGEND:**  
FCD - FLOW CONTROL DITCH  
RV - REVEGETATION  
SCE - STABILIZED CONSTRUCTION ENTRANCE  
ST - SEDIMENT TRAP



### APPROXIMATE ACREAGE

TOTAL RECLAIMED AREA FOR WELL PAD = ± 10.892 ACRES  
UN-RECLAIMED AREA FOR WELL PAD = ± 1.776 ACRES  
TOTAL RECLAIMED AREA FOR PRODUCTION PAD = ± 2.628 ACRES  
UN-RECLAIMED AREA FOR PRODUCTION PAD = ± 0 ACRES

RECLAIMED AREA

UINTAH ENGINEERING & LAND SURVEYING  
85 So. 200 East • Vernal, Utah 84078 • (435) 789-1017



# Encana OIL & GAS (USA) INC.

## SURFACE DISTURBANCE AREA FOR

WELL PAD C19 397

SECTION 19, T3S, R97W, 6th P.M.

NE 1/4 NW 1/4



SCALE

Sheet 6 of 10

DATE: 05-17-13  
DRAWN BY: T.B.  
REVISED: 06-06-13.

### SWMP LEGEND:

ECB - EROSION CONTROL  
BLANKET  
LSd - LEVEL SPREADER  
SCE - STABILIZED  
CONSTRUCTION  
ENTRANCE  
SedR - SEDIMENT  
RESERVOIR  
SL - SLASH  
ST - SEDIMENT TRAP  
TB - TOE BERM  
VB - VEGETATED BUFFER  
W - WATTLE

LINE	DIRECTION	LENGTH
L1	S84°22'37"E	42.61'
L2	N36°47'13"E	54.03'
L3	N01°26'23"E	27.47'
L4	N64°51'18"E	33.13'
L5	S54°33'02"E	28.57'
L6	S08°47'30"W	20.88'
L7	N72°24'50"W	30.92'
L8	S25°00'00"E	23.98'
L9	S66°50'47"E	50.88'
L10	S43°16'22"E	50.67'
L11	S11°58'09"E	19.56'
L12	S08°14'48"W	15.49'
L13	S29°14'55"W	20.91'
L14	S50°30'27"W	15.72'
L15	S25°03'09"E	19.37'
L16	S30°31'16"E	27.33'
L17	S61°51'14"W	46.72'
L18	N80°37'26"W	15.58'
L19	S64°59'25"W	20.52'
L20	S21°10'39"E	50.77'

### LEGEND:

- OVERFLOW
- SEWER TANK
- LIFT STATION
- SEWER LINE
- WATER TANK  
(FIRE SUPPRESSION,  
2500 Gals.)
- FREEZER
- STORAGE
- GENERATOR
- FUEL
- TRANSFORMER
- BEAR PROOF  
TRASH CANS  
(2) 30 GALLON.
- WATER TANK

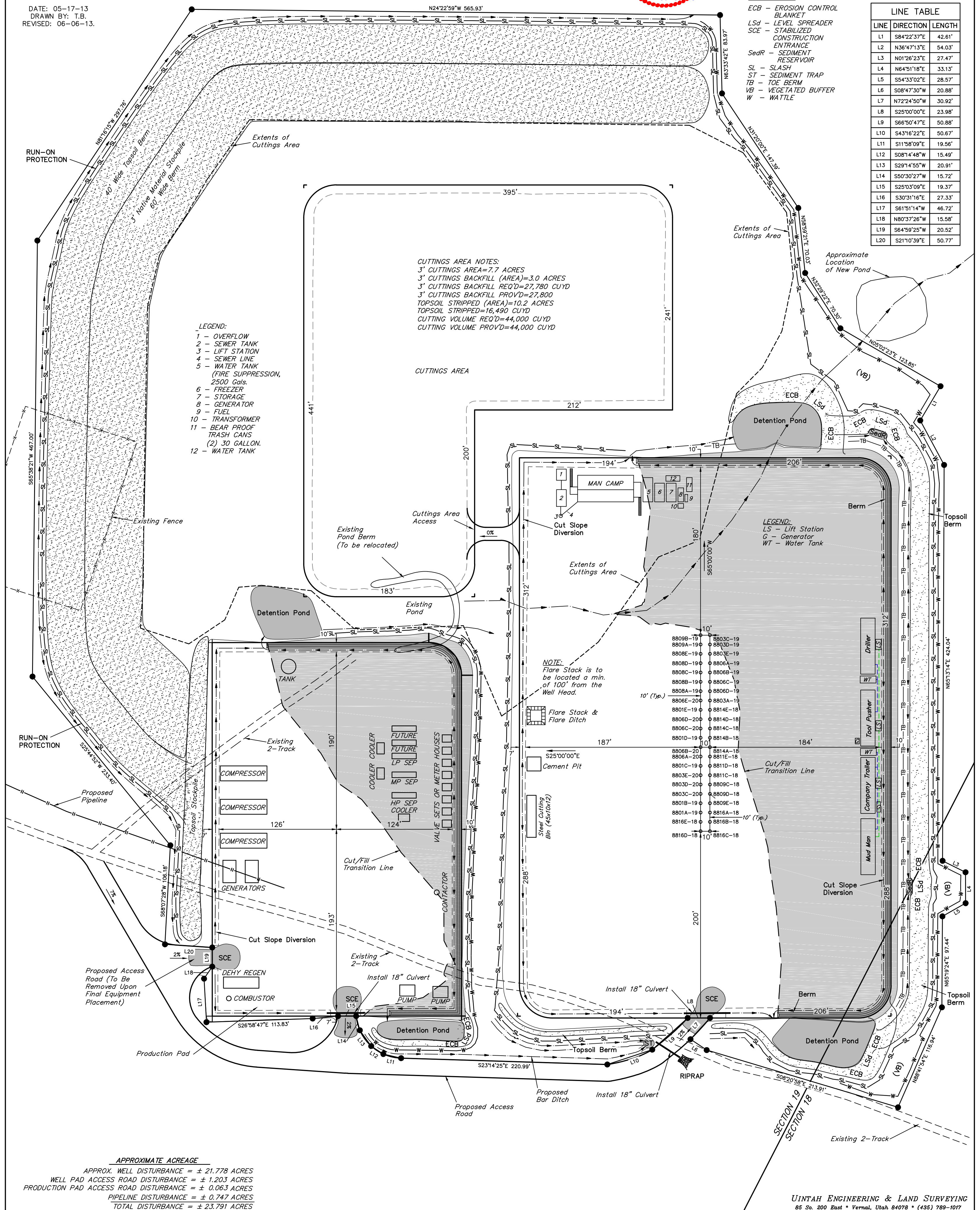
### CUTTINGS AREA NOTES:

3' CUTTINGS AREA=7.7 ACRES  
3' CUTTINGS BACKFILL (AREA)=3.0 ACRES  
3' CUTTINGS BACKFILL REQ'D=27,780 CUYD  
3' CUTTINGS BACKFILL PROV'D=27,800  
TOPSOIL STRIPPED (AREA)=10.2 ACRES  
TOPSOIL STRIPPED=16,490 CUYD  
CUTTING VOLUME REQ'D=44,000 CUYD  
CUTTING VOLUME PROV'D=44,000 CUYD

### CUTTINGS AREA

### LEGEND:

LS - Lift Station  
G - Generator  
WT - Water Tank



### APPROXIMATE ACREAGE

APPROX. WELL DISTURBANCE = ± 21.778 ACRES  
WELL PAD ACCESS ROAD DISTURBANCE = ± 1.203 ACRES  
PRODUCTION PAD ACCESS ROAD DISTURBANCE = ± 0.063 ACRES  
PIPELINE DISTURBANCE = ± 0.747 ACRES  
TOTAL DISTURBANCE = ± 23.791 ACRES