

# McElvain Energy, Inc.

Maroon 18-4  
API 0512511685  
NWNW SEC 18 T2S R46W  
306' FSL & 579' FWL  
39.889120/-102.574280  
Drilled 7/2011  
Drawing Updated by Jeff  
7/1/2013

all depths refer to KB 6' above mat  
GL @ 4113'

## Surface Casing Detail

Hole: 9 7/8" @ 459'  
7", 17#, J-55, 7 jts, cmtd @ 454'  
Pumped 210 sx w/ 7 bbls to surface  
TOC @ Surface

## Production Casing Detail

Hole: 6 1/4" @ 2696'  
4 1/2", 10 5#, J-55, 65 jts, cmtd @ 2686'  
Pumped 171 sx lead and 73 sx tail  
Circulated to surface  
TOC @ Surface (CBL)

## Tubing Detail

None

## Rod Detail

None

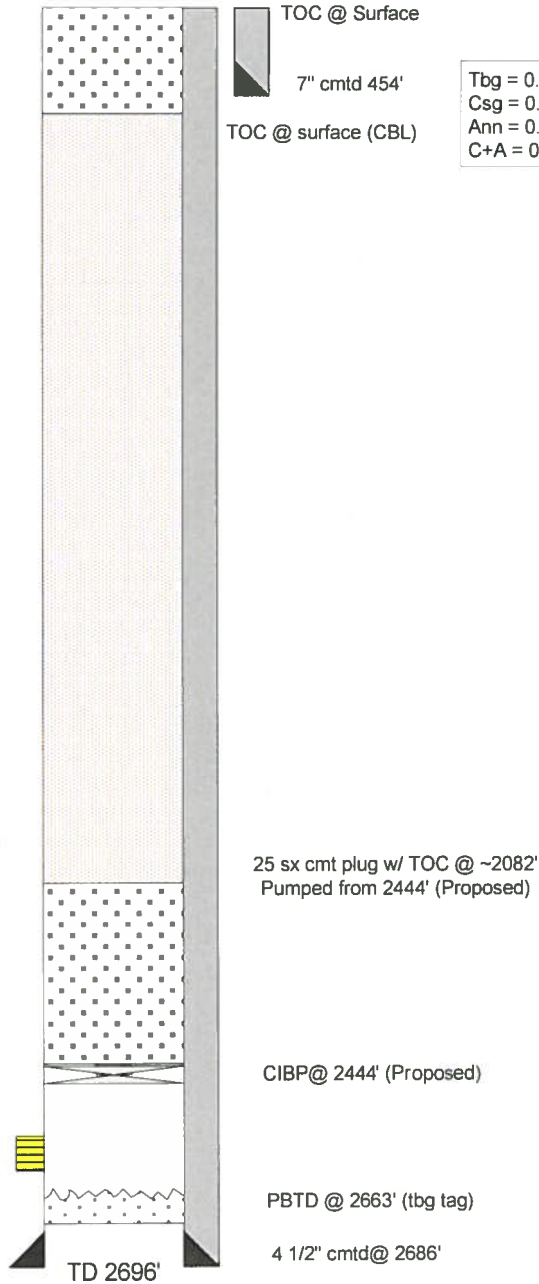
## Perforations:

2494'-2524' 8/29/2011  
3 SPF, .40" Holes

## Frac Summary:

8/30/11--CO2 FRAC-2494'-2524'(gross)  
60 Tons CO2, 33,000# 16/30  
SAND 500 GAL 7.5% HCL  
Breakdown @ 1760# ISIP=3100  
P(5)=1144, P(10)=1071, P(15)=  
1036. Opened well @ 960#

35 sx cmt plug pumped from 454'  
TOC @ Surface (Proposed)



Tbg = 0.00387 bbl/ft  
Csg = 0.01590 bbl/ft  
Ann = 0.02188 bbl/ft  
C+A = 0.03778 bbl/ft

Flag Jts:

VisioDocument