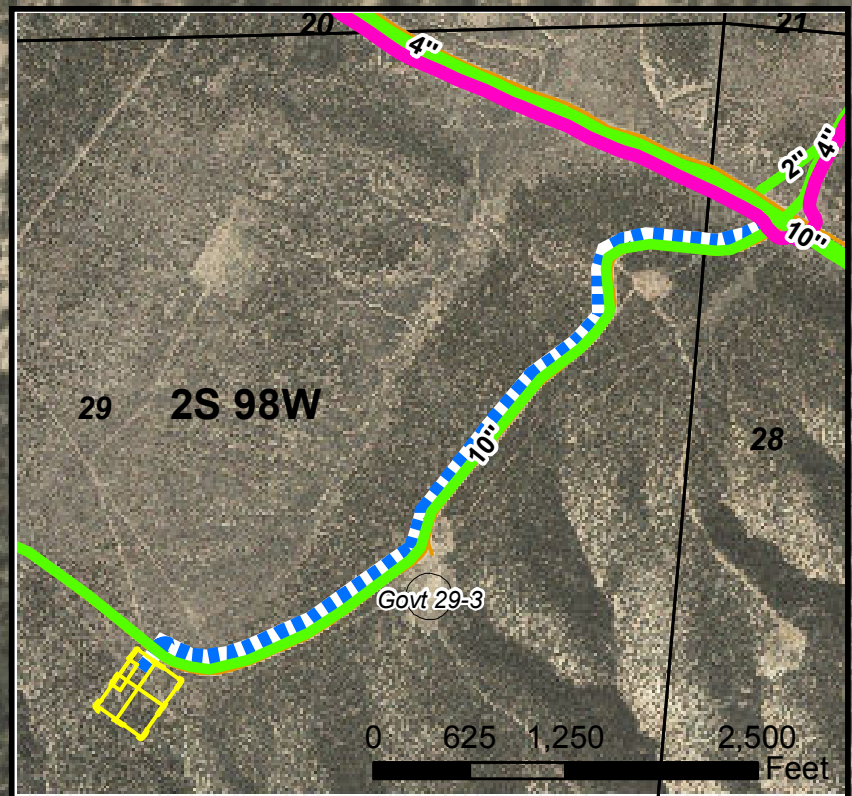


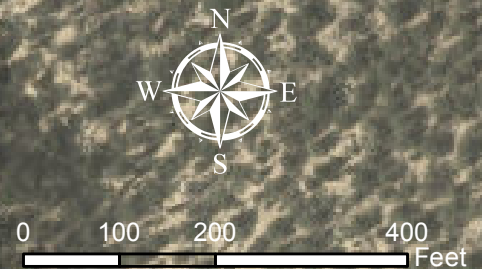
### Geologist Information

General: New location, 3 new wells  
Ownership: Fed Surface, Fed Minerals  
SUA Status: NA  
Spacing Units: Section 29 unspaced, but portion of section in Jackpot Unit. Section 32 unspaced.  
Adjacent Owners: NA



### Plan of Development

Access: New access from existing road.  
Drilling: Efficiency Rig  
Cuttings: In trench along northwest edge of pad.  
SIMOPS: No  
Completions: Frac on pad after rig leaves. Two 10" temporary surface water lines will run on existing gas line ROW and tie into existing 6" water lines.  
Flowback: On pad  
Production: Production equipment to be on northeast edge of pad.  
Pipeline: An 8" gas line will be run across the road and tie into the existing Williams 10" line.



### Legend

- Existing Gas Well
- Proposed Gas Line
- Frac Water Supply Line (Dual 10", Surface, Temp.)
- Proposed Production Equipment Area
- Proposed Daylight Line
- Proposed Pad or Pit
- Proposed Access Road
- Dual 6 in. Water Line
- Existing Gas Pipeline - Williams Midstream
- Existing Road
- Existing Pad

WPX Energy Rocky Mountain, LLC

RG 24-29-298 Pad  
T2S R98W, Section 29

July 10, 2013

