

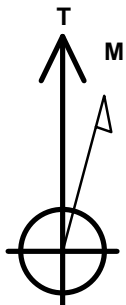
Condor Energy

Well Name: **Wickstrom 4-5H**

Surface Location: Wickstrom 4-2H Pad Sec.4-T6N-R60W
 North American Datum 1983 , US State Plane 1983 , Colorado Northern Zone
 Ground Elevation: 4788.8
 +N/-S +E/-W Northing Easting Latitude Longitude Slot
 0.0 0.0 1431959.97 3390780.02 40.510630 -104.094540
 RKB-12.5' WELL @ 4801.3ft (RKB-12.5')

WELLBORE TARGET DETAILS

Name	TVD	+N/-S	+E/-W	Shape
SHL 240'FSL & 1307'FEL, Sec.4	1.0	0.0	0.0	Point
SECTION LINE	1.2	-240.9	1305.8	Polygon
HARDLINES 600' BHL	2.0	-4916.3	702.4	Polygon
HARDLINES 660' SHL	2.0	-840.0	705.8	Polygon
BHL 660'FSL & 660'FEL, Sec.9	6040.0	-4860.0	645.2	Point
LANDING POINT 660'FNL & 660'FEL, Sec.9	6040.0	-899.8	645.1	Point



Azimuths to True North
 Magnetic North: 8.22°

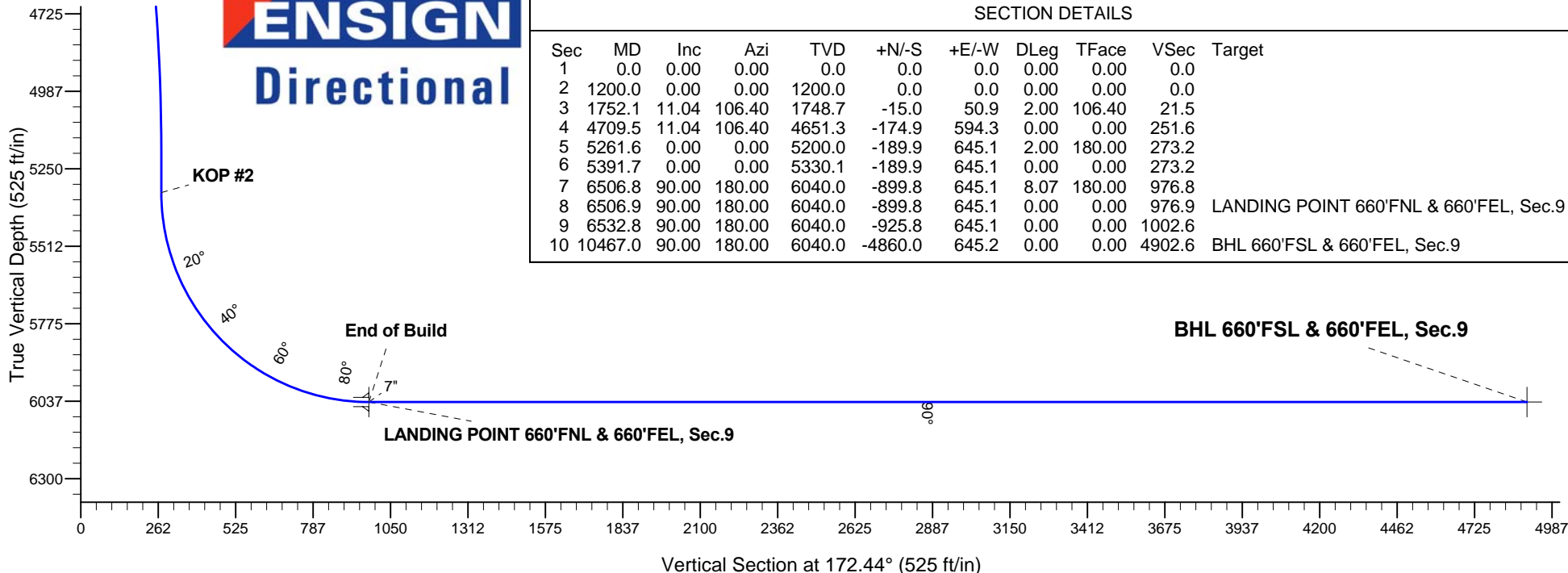
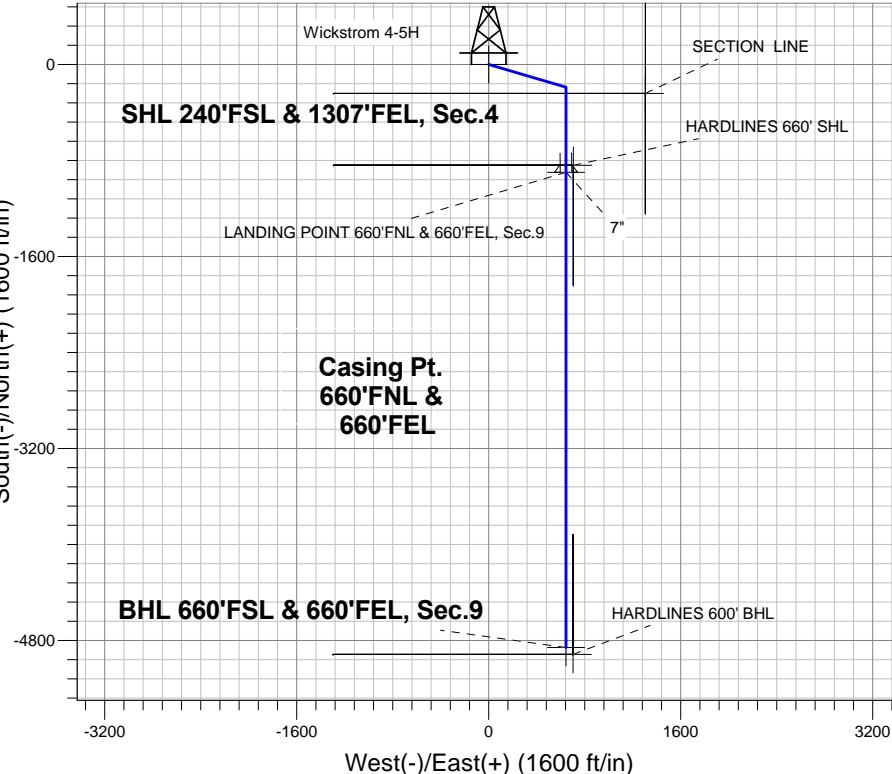
Magnetic Field
 Strength: 53034.8snT
 Dip Angle: 67.17°
 Date: 7/30/2013
 Model: IGRF2010

Wickstrom 4-2H Pad Sec.4-T6N-R60W
 Wickstrom 4-5H
 Plan #1 (7-30-13)
 11:18, July 31 2013

ANNOTATIONS

TVD	MD	Annotation
1200.0	1200.0	KOP #1
5330.1	5391.7	KOP #2
6040.0	6506.9	End of Build

South(-)/North(+) (1600 ft/in)



SECTION DETAILS

Sec	MD	Inc	Azi	TVD	+N/-S	+E/-W	DLeg	TFace	VSec	Target
1	0.0	0.00	0.00	0.0	0.0	0.0	0.00	0.00	0.0	
2	1200.0	0.00	0.00	1200.0	0.0	0.0	0.00	0.00	0.0	
3	1752.1	11.04	106.40	1748.7	-15.0	50.9	2.00	106.40	21.5	
4	4709.5	11.04	106.40	4651.3	-174.9	594.3	0.00	0.00	251.6	
5	5261.6	0.00	0.00	5200.0	-189.9	645.1	2.00	180.00	273.2	
6	5391.7	0.00	0.00	5330.1	-189.9	645.1	0.00	0.00	273.2	
7	6506.8	90.00	180.00	6040.0	-899.8	645.1	8.07	180.00	976.8	
8	6506.9	90.00	180.00	6040.0	-899.8	645.1	0.00	0.00	976.9	LANDING POINT 660'FNL & 660'FEL, Sec.9
9	6532.8	90.00	180.00	6040.0	-925.8	645.1	0.00	0.00	1002.6	
10	10467.0	90.00	180.00	6040.0	-4860.0	645.2	0.00	0.00	4902.6	BHL 660'FSL & 660'FEL, Sec.9



Condor Energy

SEC.4-T6N-R60W

Wickstrom 4-2H Pad Sec.4-T6N-R60W

Wickstrom 4-5H

Wellbore #1

Plan: Plan #1 (7-30-13)

Standard Planning Report

31 July, 2013

Database:	Landmark	Local Co-ordinate Reference:	Well Wickstrom 4-5H
Company:	Condor Energy	TVD Reference:	WELL @ 4801.3ft (RKB-12.5')
Project:	SEC.4-T6N-R60W	MD Reference:	WELL @ 4801.3ft (RKB-12.5')
Site:	Wickstrom 4-2H Pad Sec.4-T6N-R60W	North Reference:	True
Well:	Wickstrom 4-5H	Survey Calculation Method:	Minimum Curvature
Wellbore:	Wellbore #1		
Design:	Plan #1 (7-30-13)		

Project	SEC.4-T6N-R60W, Morgan County, CO		
Map System:	US State Plane 1983	System Datum:	Mean Sea Level
Geo Datum:	North American Datum 1983		Using Well Reference Point
Map Zone:	Colorado Northern Zone		Using geodetic scale factor

Site		Wickstrom 4-2H Pad Sec.4-T6N-R60W			
Site Position:		Northing:	1,431,988.16ft	Latitude:	40.510710
From:	Lat/Long	Easting:	3,390,718.40ft	Longitude:	-104.094760
Position Uncertainty:		0.0 ft	Slot Radius:	"	Grid Convergence:
					0.91 °

Well	Wickstrom 4-5H					
Well Position	+N/-S	-29.2 ft	Northing:	1,431,959.97 ft	Latitude:	40.510630
	+E/-W	61.2 ft	Easting:	3,390,780.02 ft	Longitude:	-104.094540
Position Uncertainty		0.0 ft	Wellhead Elevation:	ft	Ground Level:	4,788.8 ft

Wellbore	Wellbore #1				
Magnetics	Model Name	Sample Date	Declination (°)	Dip Angle (°)	Field Strength (nT)
	IGRF2010	7/30/2013	8.22	67.17	53,035

Design	Plan #1 (7-30-13)			
Audit Notes:				
Version:	Phase:	PROTOTYPE	Tie On Depth:	0.0
Vertical Section:	Depth From (TVD) (ft)	+N/-S (ft)	+E/-W (ft)	Direction (°)
	0.0	0.0	0.0	172.44

Plan Sections										
Measured Depth (ft)	Inclination (°)	Azimuth (°)	Vertical Depth (ft)	+N/-S (ft)	+E/-W (ft)	Dogleg Rate (°/100ft)	Build Rate (°/100ft)	Turn Rate (°/100ft)	TFO (°)	Target
0.0	0.00	0.00	0.0	0.0	0.0	0.00	0.00	0.00	0.00	
1,200.0	0.00	0.00	1,200.0	0.0	0.0	0.00	0.00	0.00	0.00	
1,752.1	11.04	106.40	1,748.7	-15.0	50.9	2.00	2.00	0.00	106.40	
4,709.5	11.04	106.40	4,651.3	-174.9	594.3	0.00	0.00	0.00	0.00	
5,261.6	0.00	0.00	5,200.0	-189.9	645.1	2.00	-2.00	0.00	180.00	
5,391.7	0.00	0.00	5,330.1	-189.9	645.1	0.00	0.00	0.00	0.00	
6,506.8	90.00	180.00	6,040.0	-899.8	645.1	8.07	8.07	0.00	180.00	
6,506.9	90.00	180.00	6,040.0	-899.8	645.1	0.00	0.00	0.00	0.00	LANDING POINT 6
6,532.8	90.00	180.00	6,040.0	-925.8	645.1	0.00	0.00	0.00	0.00	
10,467.0	90.00	180.00	6,040.0	-4,860.0	645.2	0.00	0.00	0.00	0.00	BHL 660'FSL & 660'

Database:	Landmark	Local Co-ordinate Reference:	Well Wickstrom 4-5H
Company:	Condor Energy	TVD Reference:	WELL @ 4801.3ft (RKB-12.5')
Project:	SEC.4-T6N-R60W	MD Reference:	WELL @ 4801.3ft (RKB-12.5')
Site:	Wickstrom 4-2H Pad Sec.4-T6N-R60W	North Reference:	True
Well:	Wickstrom 4-5H	Survey Calculation Method:	Minimum Curvature
Wellbore:	Wellbore #1		
Design:	Plan #1 (7-30-13)		

Planned Survey									
Measured Depth (ft)	Inclination (°)	Azimuth (°)	Vertical Depth (ft)	+N/-S (ft)	+E/-W (ft)	Vertical Section (ft)	Dogleg Rate (°/100ft)	Build Rate (°/100ft)	Turn Rate (°/100ft)
0.0	0.00	0.00	0.0	0.0	0.0	0.0	0.00	0.00	0.00
1.0	0.00	0.00	1.0	0.0	0.0	0.0	0.00	0.00	0.00
SHL 240'FSL & 1307'FEL, Sec.4									
1.2	0.00	0.00	1.2	0.0	0.0	0.0	0.00	0.00	0.00
SECTION LINE									
2.0	0.00	0.00	2.0	0.0	0.0	0.0	0.00	0.00	0.00
HARDLINES 600' BHL - HARDLINES 660' SHL									
100.0	0.00	0.00	100.0	0.0	0.0	0.0	0.00	0.00	0.00
200.0	0.00	0.00	200.0	0.0	0.0	0.0	0.00	0.00	0.00
300.0	0.00	0.00	300.0	0.0	0.0	0.0	0.00	0.00	0.00
400.0	0.00	0.00	400.0	0.0	0.0	0.0	0.00	0.00	0.00
500.0	0.00	0.00	500.0	0.0	0.0	0.0	0.00	0.00	0.00
600.0	0.00	0.00	600.0	0.0	0.0	0.0	0.00	0.00	0.00
700.0	0.00	0.00	700.0	0.0	0.0	0.0	0.00	0.00	0.00
800.0	0.00	0.00	800.0	0.0	0.0	0.0	0.00	0.00	0.00
900.0	0.00	0.00	900.0	0.0	0.0	0.0	0.00	0.00	0.00
1,000.0	0.00	0.00	1,000.0	0.0	0.0	0.0	0.00	0.00	0.00
1,100.0	0.00	0.00	1,100.0	0.0	0.0	0.0	0.00	0.00	0.00
1,200.0	0.00	0.00	1,200.0	0.0	0.0	0.0	0.00	0.00	0.00
KOP #1									
1,300.0	2.00	106.40	1,300.0	-0.5	1.7	0.7	2.00	2.00	0.00
1,400.0	4.00	106.40	1,399.8	-2.0	6.7	2.8	2.00	2.00	0.00
1,500.0	6.00	106.40	1,499.5	-4.4	15.1	6.4	2.00	2.00	0.00
1,600.0	8.00	106.40	1,598.7	-7.9	26.7	11.3	2.00	2.00	0.00
1,700.0	10.00	106.40	1,697.5	-12.3	41.8	17.7	2.00	2.00	0.00
1,752.1	11.04	106.40	1,748.7	-15.0	50.9	21.5	2.00	2.00	0.00
1,800.0	11.04	106.40	1,795.7	-17.6	59.7	25.3	0.00	0.00	0.00
1,900.0	11.04	106.40	1,893.9	-23.0	78.1	33.0	0.00	0.00	0.00
2,000.0	11.04	106.40	1,992.0	-28.4	96.4	40.8	0.00	0.00	0.00
2,100.0	11.04	106.40	2,090.1	-33.8	114.8	48.6	0.00	0.00	0.00
2,200.0	11.04	106.40	2,188.3	-39.2	133.2	56.4	0.00	0.00	0.00
2,300.0	11.04	106.40	2,286.4	-44.6	151.5	64.2	0.00	0.00	0.00
2,400.0	11.04	106.40	2,384.6	-50.0	169.9	71.9	0.00	0.00	0.00
2,500.0	11.04	106.40	2,482.7	-55.4	188.3	79.7	0.00	0.00	0.00
2,600.0	11.04	106.40	2,580.9	-60.8	206.7	87.5	0.00	0.00	0.00
2,700.0	11.04	106.40	2,679.0	-66.2	225.0	95.3	0.00	0.00	0.00
2,800.0	11.04	106.40	2,777.2	-71.7	243.4	103.1	0.00	0.00	0.00
2,900.0	11.04	106.40	2,875.3	-77.1	261.8	110.8	0.00	0.00	0.00
3,000.0	11.04	106.40	2,973.5	-82.5	280.2	118.6	0.00	0.00	0.00
3,100.0	11.04	106.40	3,071.6	-87.9	298.5	126.4	0.00	0.00	0.00
3,200.0	11.04	106.40	3,169.8	-93.3	316.9	134.2	0.00	0.00	0.00
3,300.0	11.04	106.40	3,267.9	-98.7	335.3	142.0	0.00	0.00	0.00
3,400.0	11.04	106.40	3,366.1	-104.1	353.7	149.7	0.00	0.00	0.00
3,500.0	11.04	106.40	3,464.2	-109.5	372.0	157.5	0.00	0.00	0.00
3,600.0	11.04	106.40	3,562.4	-114.9	390.4	165.3	0.00	0.00	0.00
3,700.0	11.04	106.40	3,660.5	-120.3	408.8	173.1	0.00	0.00	0.00
3,800.0	11.04	106.40	3,758.7	-125.7	427.2	180.9	0.00	0.00	0.00
3,900.0	11.04	106.40	3,856.8	-131.1	445.5	188.6	0.00	0.00	0.00
4,000.0	11.04	106.40	3,955.0	-136.6	463.9	196.4	0.00	0.00	0.00
4,100.0	11.04	106.40	4,053.1	-142.0	482.3	204.2	0.00	0.00	0.00
4,200.0	11.04	106.40	4,151.3	-147.4	500.6	212.0	0.00	0.00	0.00
4,300.0	11.04	106.40	4,249.4	-152.8	519.0	219.8	0.00	0.00	0.00
4,400.0	11.04	106.40	4,347.6	-158.2	537.4	227.5	0.00	0.00	0.00
4,500.0	11.04	106.40	4,445.7	-163.6	555.8	235.3	0.00	0.00	0.00

Database:	Landmark	Local Co-ordinate Reference:	Well Wickstrom 4-5H
Company:	Condor Energy	TVD Reference:	WELL @ 4801.3ft (RKB-12.5')
Project:	SEC.4-T6N-R60W	MD Reference:	WELL @ 4801.3ft (RKB-12.5')
Site:	Wickstrom 4-2H Pad Sec.4-T6N-R60W	North Reference:	True
Well:	Wickstrom 4-5H	Survey Calculation Method:	Minimum Curvature
Wellbore:	Wellbore #1		
Design:	Plan #1 (7-30-13)		

Planned Survey									
Measured Depth (ft)	Inclination (°)	Azimuth (°)	Vertical Depth (ft)	+N/-S (ft)	+E/-W (ft)	Vertical Section (ft)	Dogleg Rate (°/100ft)	Build Rate (°/100ft)	Turn Rate (°/100ft)
4,600.0	11.04	106.40	4,543.9	-169.0	574.1	243.1	0.00	0.00	0.00
4,700.0	11.04	106.40	4,642.0	-174.4	592.5	250.9	0.00	0.00	0.00
4,709.5	11.04	106.40	4,651.3	-174.9	594.3	251.6	0.00	0.00	0.00
4,800.0	9.23	106.40	4,740.4	-179.4	609.5	258.1	2.00	-2.00	0.00
4,900.0	7.23	106.40	4,839.4	-183.5	623.3	263.9	2.00	-2.00	0.00
5,000.0	5.23	106.40	4,938.8	-186.5	633.7	268.3	2.00	-2.00	0.00
5,100.0	3.23	106.40	5,038.5	-188.6	640.8	271.3	2.00	-2.00	0.00
5,200.0	1.23	106.40	5,138.4	-189.7	644.5	272.9	2.00	-2.00	0.00
5,261.6	0.00	0.00	5,200.0	-189.9	645.1	273.2	2.00	-2.00	0.00
5,300.0	0.00	0.00	5,238.4	-189.9	645.1	273.2	0.00	0.00	0.00
5,391.7	0.00	0.00	5,330.1	-189.9	645.1	273.2	0.00	0.00	0.00
KOP #2									
5,400.0	0.67	180.00	5,338.4	-189.9	645.1	273.2	8.05	8.05	0.00
5,500.0	8.74	180.00	5,438.0	-198.1	645.1	281.3	8.07	8.07	0.00
5,600.0	16.81	180.00	5,535.5	-220.2	645.1	303.2	8.07	8.07	0.00
5,700.0	24.88	180.00	5,628.8	-255.8	645.1	338.5	8.07	8.07	0.00
5,800.0	32.95	180.00	5,716.3	-304.1	645.1	386.4	8.07	8.07	0.00
5,900.0	41.03	180.00	5,796.1	-364.2	645.1	446.0	8.07	8.07	0.00
6,000.0	49.10	180.00	5,866.7	-435.0	645.1	516.1	8.07	8.07	0.00
6,100.0	57.17	180.00	5,926.6	-514.9	645.1	595.3	8.07	8.07	0.00
6,200.0	65.24	180.00	5,974.7	-602.5	645.1	682.1	8.07	8.07	0.00
6,300.0	73.31	180.00	6,010.1	-695.9	645.1	774.8	8.07	8.07	0.00
6,400.0	81.38	180.00	6,032.0	-793.4	645.1	871.4	8.07	8.07	0.00
6,500.0	89.45	180.00	6,040.0	-893.0	645.1	970.1	8.07	8.07	0.00
6,506.8	90.00	180.00	6,040.0	-899.8	645.1	976.8	8.07	8.07	0.00
6,506.9	90.00	180.00	6,040.0	-899.8	645.1	976.9	0.00	0.00	0.00
End of Build - 7" - LANDING POINT 660'FNL & 660'FEL, Sec.9									
6,532.8	90.00	180.00	6,040.0	-925.8	645.1	1,002.6	0.00	0.00	0.00
6,600.0	90.00	180.00	6,040.0	-993.0	645.1	1,069.3	0.00	0.00	0.00
6,700.0	90.00	180.00	6,040.0	-1,093.0	645.1	1,168.4	0.00	0.00	0.00
6,800.0	90.00	180.00	6,040.0	-1,193.0	645.1	1,267.5	0.00	0.00	0.00
6,900.0	90.00	180.00	6,040.0	-1,293.0	645.1	1,366.7	0.00	0.00	0.00
7,000.0	90.00	180.00	6,040.0	-1,393.0	645.1	1,465.8	0.00	0.00	0.00
7,100.0	90.00	180.00	6,040.0	-1,493.0	645.1	1,564.9	0.00	0.00	0.00
7,200.0	90.00	180.00	6,040.0	-1,593.0	645.1	1,664.0	0.00	0.00	0.00
7,300.0	90.00	180.00	6,040.0	-1,693.0	645.1	1,763.2	0.00	0.00	0.00
7,400.0	90.00	180.00	6,040.0	-1,793.0	645.1	1,862.3	0.00	0.00	0.00
7,500.0	90.00	180.00	6,040.0	-1,893.0	645.1	1,961.4	0.00	0.00	0.00
7,600.0	90.00	180.00	6,040.0	-1,993.0	645.1	2,060.6	0.00	0.00	0.00
7,700.0	90.00	180.00	6,040.0	-2,093.0	645.1	2,159.7	0.00	0.00	0.00
7,800.0	90.00	180.00	6,040.0	-2,193.0	645.1	2,258.8	0.00	0.00	0.00
7,900.0	90.00	180.00	6,040.0	-2,293.0	645.1	2,358.0	0.00	0.00	0.00
8,000.0	90.00	180.00	6,040.0	-2,393.0	645.1	2,457.1	0.00	0.00	0.00
8,100.0	90.00	180.00	6,040.0	-2,493.0	645.1	2,556.2	0.00	0.00	0.00
8,200.0	90.00	180.00	6,040.0	-2,593.0	645.1	2,655.3	0.00	0.00	0.00
8,300.0	90.00	180.00	6,040.0	-2,693.0	645.1	2,754.5	0.00	0.00	0.00
8,400.0	90.00	180.00	6,040.0	-2,793.0	645.1	2,853.6	0.00	0.00	0.00
8,500.0	90.00	180.00	6,040.0	-2,893.0	645.1	2,952.7	0.00	0.00	0.00
8,600.0	90.00	180.00	6,040.0	-2,993.0	645.1	3,051.9	0.00	0.00	0.00
8,700.0	90.00	180.00	6,040.0	-3,093.0	645.1	3,151.0	0.00	0.00	0.00
8,800.0	90.00	180.00	6,040.0	-3,193.0	645.1	3,250.1	0.00	0.00	0.00
8,900.0	90.00	180.00	6,040.0	-3,293.0	645.1	3,349.3	0.00	0.00	0.00
9,000.0	90.00	180.00	6,040.0	-3,393.0	645.1	3,448.4	0.00	0.00	0.00

Database:	Landmark	Local Co-ordinate Reference:	Well Wickstrom 4-5H
Company:	Condor Energy	TVD Reference:	WELL @ 4801.3ft (RKB-12.5')
Project:	SEC.4-T6N-R60W	MD Reference:	WELL @ 4801.3ft (RKB-12.5')
Site:	Wickstrom 4-2H Pad Sec.4-T6N-R60W	North Reference:	True
Well:	Wickstrom 4-5H	Survey Calculation Method:	Minimum Curvature
Wellbore:	Wellbore #1		
Design:	Plan #1 (7-30-13)		

Planned Survey										
Measured Depth (ft)	Inclination (°)	Azimuth (°)	Vertical Depth (ft)	+N/-S (ft)	+E/-W (ft)	Vertical Section (ft)	Dogleg Rate (°/100ft)	Build Rate (°/100ft)	Turn Rate (°/100ft)	
9,100.0	90.00	180.00	6,040.0	-3,493.0	645.1	3,547.5	0.00	0.00	0.00	
9,200.0	90.00	180.00	6,040.0	-3,593.0	645.1	3,646.6	0.00	0.00	0.00	
9,300.0	90.00	180.00	6,040.0	-3,693.0	645.1	3,745.8	0.00	0.00	0.00	
9,400.0	90.00	180.00	6,040.0	-3,793.0	645.1	3,844.9	0.00	0.00	0.00	
9,500.0	90.00	180.00	6,040.0	-3,893.0	645.1	3,944.0	0.00	0.00	0.00	
9,600.0	90.00	180.00	6,040.0	-3,993.0	645.1	4,043.2	0.00	0.00	0.00	
9,700.0	90.00	180.00	6,040.0	-4,093.0	645.1	4,142.3	0.00	0.00	0.00	
9,800.0	90.00	180.00	6,040.0	-4,193.0	645.1	4,241.4	0.00	0.00	0.00	
9,900.0	90.00	180.00	6,040.0	-4,293.0	645.1	4,340.6	0.00	0.00	0.00	
10,000.0	90.00	180.00	6,040.0	-4,393.0	645.1	4,439.7	0.00	0.00	0.00	
10,100.0	90.00	180.00	6,040.0	-4,493.0	645.1	4,538.8	0.00	0.00	0.00	
10,200.0	90.00	180.00	6,040.0	-4,593.0	645.1	4,638.0	0.00	0.00	0.00	
10,300.0	90.00	180.00	6,040.0	-4,693.0	645.1	4,737.1	0.00	0.00	0.00	
10,400.0	90.00	180.00	6,040.0	-4,793.0	645.1	4,836.2	0.00	0.00	0.00	
10,467.0	90.00	180.00	6,040.0	-4,860.0	645.2	4,902.6	0.00	0.00	0.00	
BHL 660'FSL & 660'FEL, Sec.9										

Casing Points					
Measured Depth (ft)	Vertical Depth (ft)	Name	Casing Diameter (")	Hole Diameter (")	
6,506.9	6,040.0	7"	7	7-1/2	

Plan Annotations					
Measured Depth (ft)	Vertical Depth (ft)	Local Coordinates			
		+N/-S (ft)	+E/-W (ft)	Comment	
1,200.0	1,200.0	0.0	0.0	KOP #1	
5,391.7	5,330.1	-189.9	645.1	KOP #2	
6,506.9	6,040.0	-899.9	645.1	End of Build	