



SLW Ranch B01-63-1HN 1" MD Log
(Scale: 1"=100' (100'))

Company: Noble Energy
Well: SLW RANCH B01-63-1HN
Field: Wattenburg
Well ID: 05-123-36259
Job Number: RM-13219
Location: Lat 40° 25' 26.508 N / Long 104° 29' 33.216 W
Operator 1: Bob Kubistek
Operator 2: Scott Sims

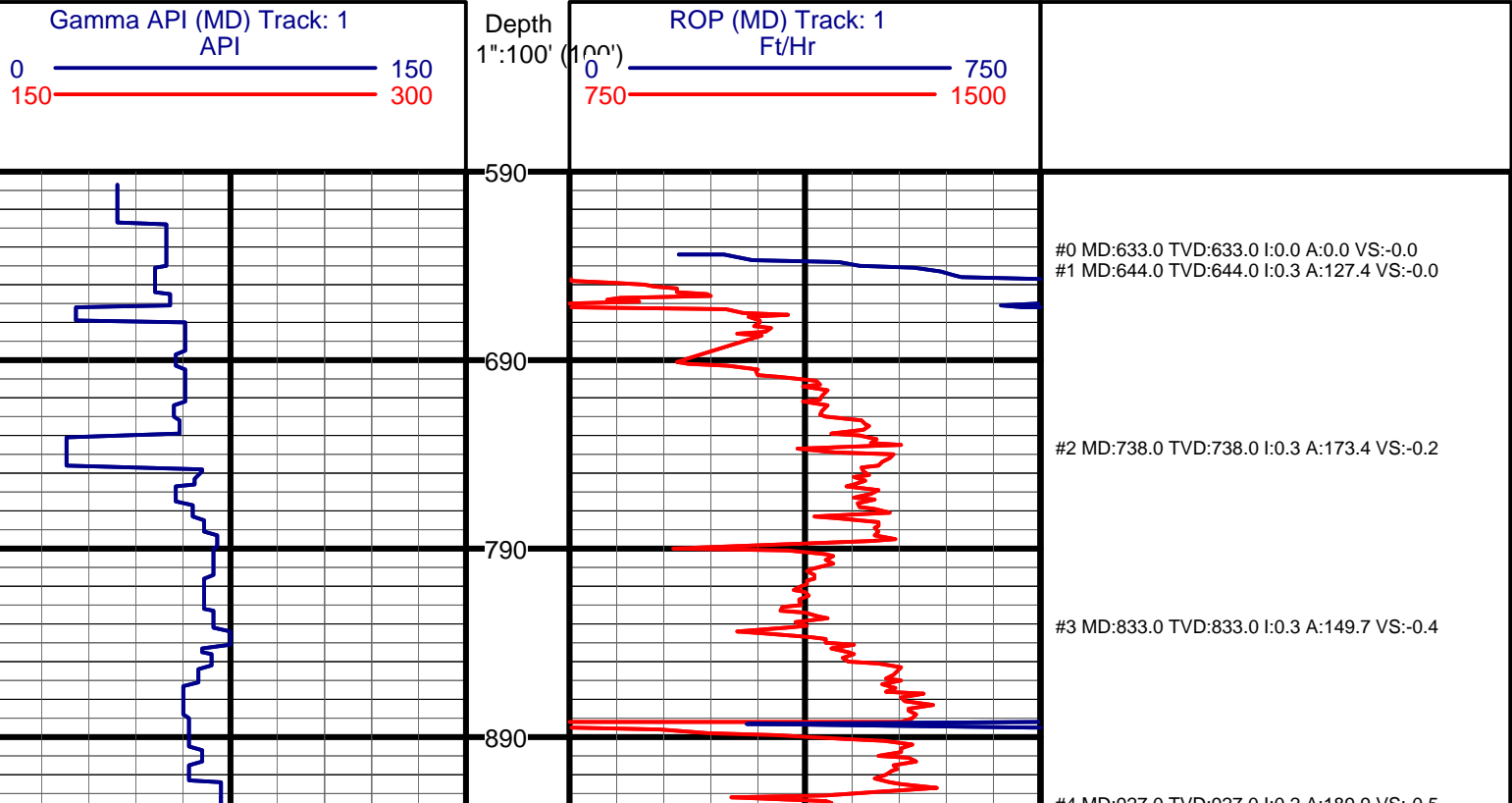
State: CO
County: Weld
Country: USA

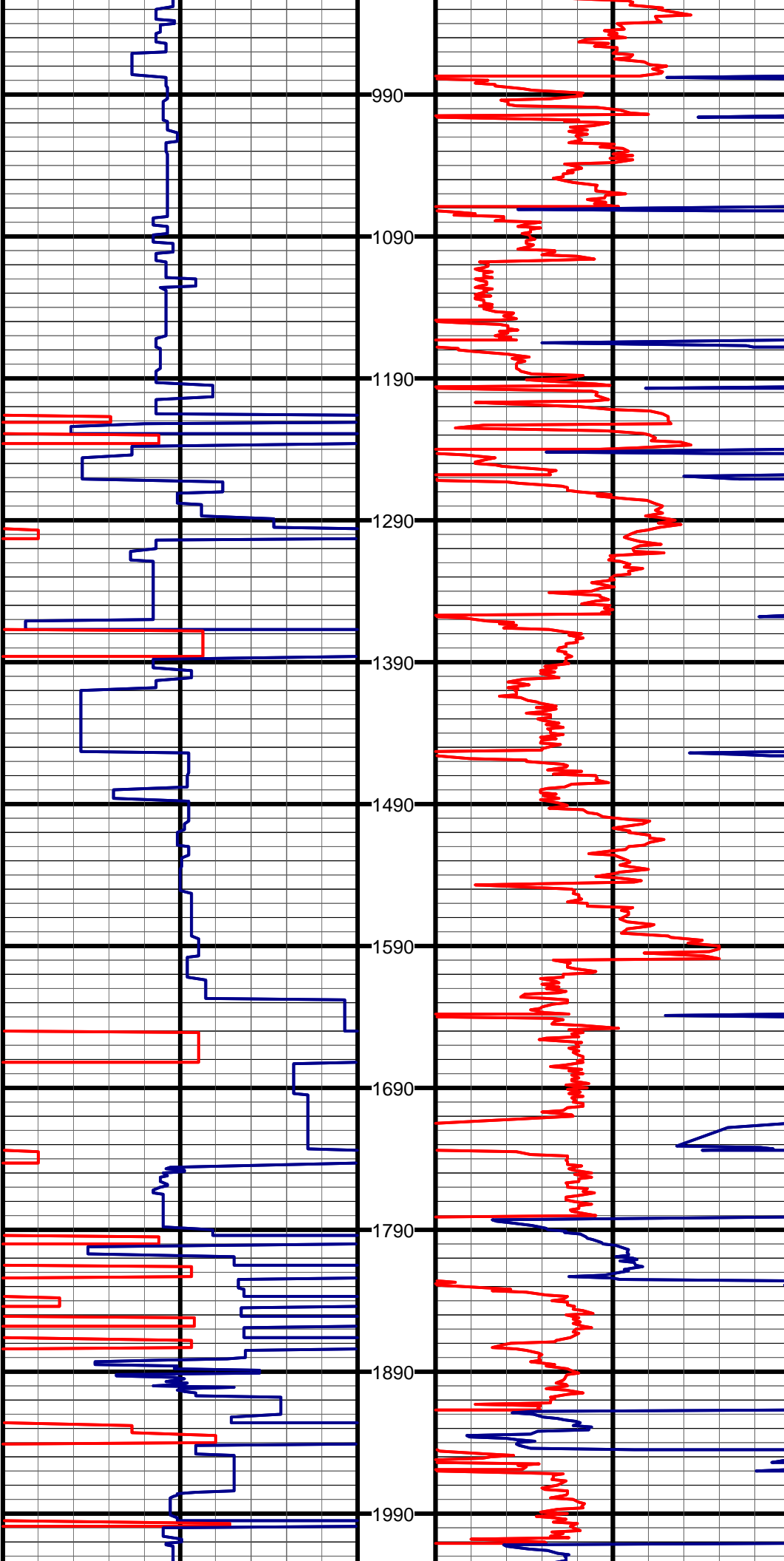
Elev KB: 4634
Elev DF: 30
Elev GL: 4604

Comment 1: Start DDC Surveys @ 633'
Comment 2: Max Temp 221°
Comment 3: Water Based Mud
Comment 4: Ending Mud Weight 9.8
Comment 5: Endlind Vis 41.0

Hole Data			Casing Record		
Size	From	To	Size	From	To
13 3/4"	0'	633'	9 5/8"	0'	633'
8 3/4"	633'	7,033'	7"		633'
6 1/8"	7,033'	11,250"			7033'

Tool Run Data		Run #1	Run #2	Run #3	Run #4	Run #5
Tool S/N		1078	1078	1078	1078	
Cal Factor		3.387	3.387	3.387	1.985	
Gamma Offset		37'	37'	37'	44'	
Start Depth		633'	5,877'	6,493'	7043'	
Start Date		3/17/13	3/18/13	3/19/13	3/21/13	
Start Time		09:25	16:00	07:00	03:15	
End Depth		5,877'	6,493'	7043	11,250'	
End Date		3/18/13	3/19/13	3/20/13	3/23/13	
End Time		15:00	06:10	00:50	06:50	





#4 MD:927.0 TVD:927.0 I:0.2 A:189.9 VS:-0.5

#5 MD:1211.0 TVD:1211.0 I:0.4 A:205.9 VS:0.1

#6 MD:1496.0 TVD:1496.0 I:0.4 A:159.2 VS:0.2

#7 MD:1777.0 TVD:1777.0 I:0.9 A:111.4 VS:-2.1

#8 MD:1869.0 TVD:1868.9 I:4.0 A:88.9 VS:-6.0

#9 MD:1963.0 TVD:1962.6 I:5.5 A:79.2 VS:-13.7

