

LOG created using LPLOT VH Version 3.0, March 31, 2013, Copyright (C) 1999-2009 Pason Systems Corp.

OPERATOR: NOBLE ENERGY INC.
WELL: SLW RANCH B01-62-1HN
LOCATION: SESE SEC 1, T5N, R64W
COUNTY: WELD
STATE: COLORADO
SPOT: 987' FSL, 1077' FEL
ELEVATION: GR 4,604' KB 4,634'
FIELD: WATTENBERG
SPUD DATE: 03/25/2013
TD DATE: 03/27/2013
DATES LOGGED: 03/26/2013 - 03/27/2013
DEPTHS LOGGED: 700' MD - 6037' MD
LOGGERS: ANDREA ZUIDEMA, CHRISTIAN VENTURINO
DRILLING FLUID: LSND
DRILLING RIG: H&P 326
API: 05-123-36260
LOG TYPE: VERTICAL
SCALE: 1:240 (5 inches per 100 feet)
REMARKS: WELLSITE GEOLOGICAL SERVICES
 PROVIDED BY COLUMBINE LOGGING INC.

LITHOLOGIES



No Sample



Sandstone



Shaly Sandstone



Silty Shale

ENGINEERING SYMBOLS



Connection



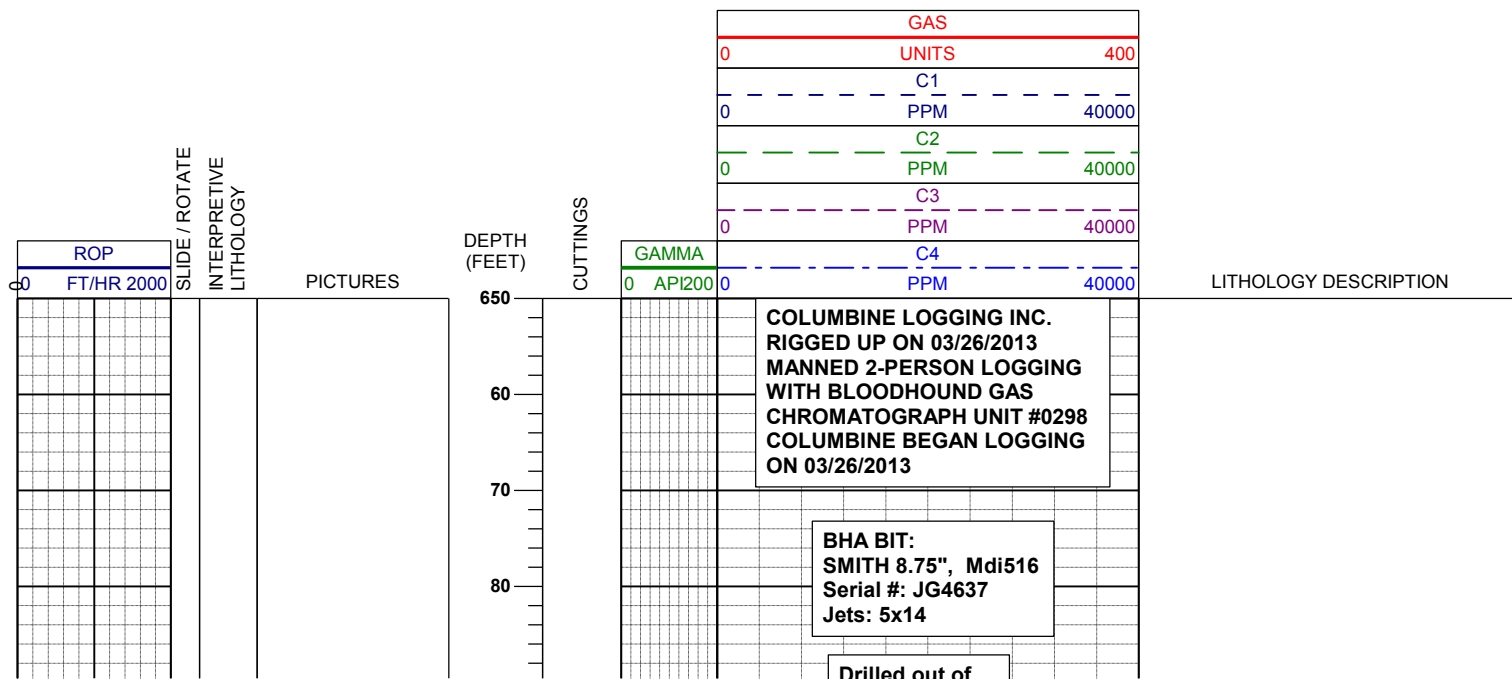
Connection Gas

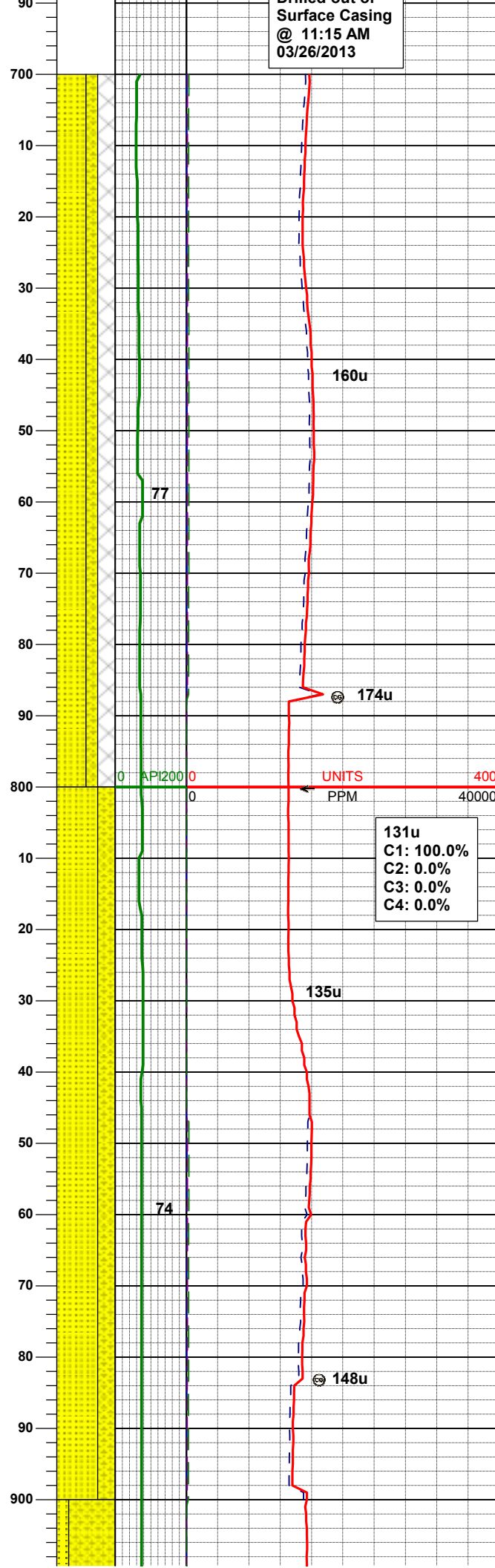
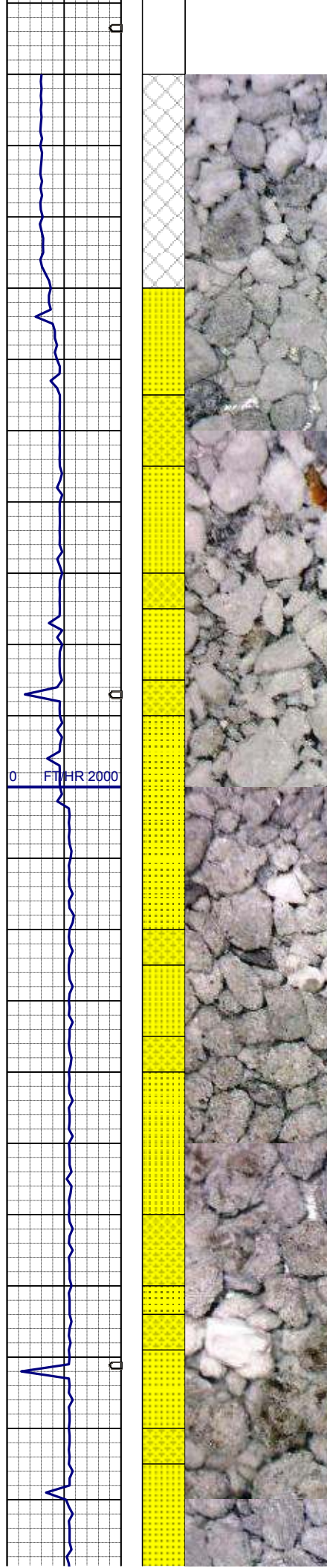


Arrow



Midnight Depth





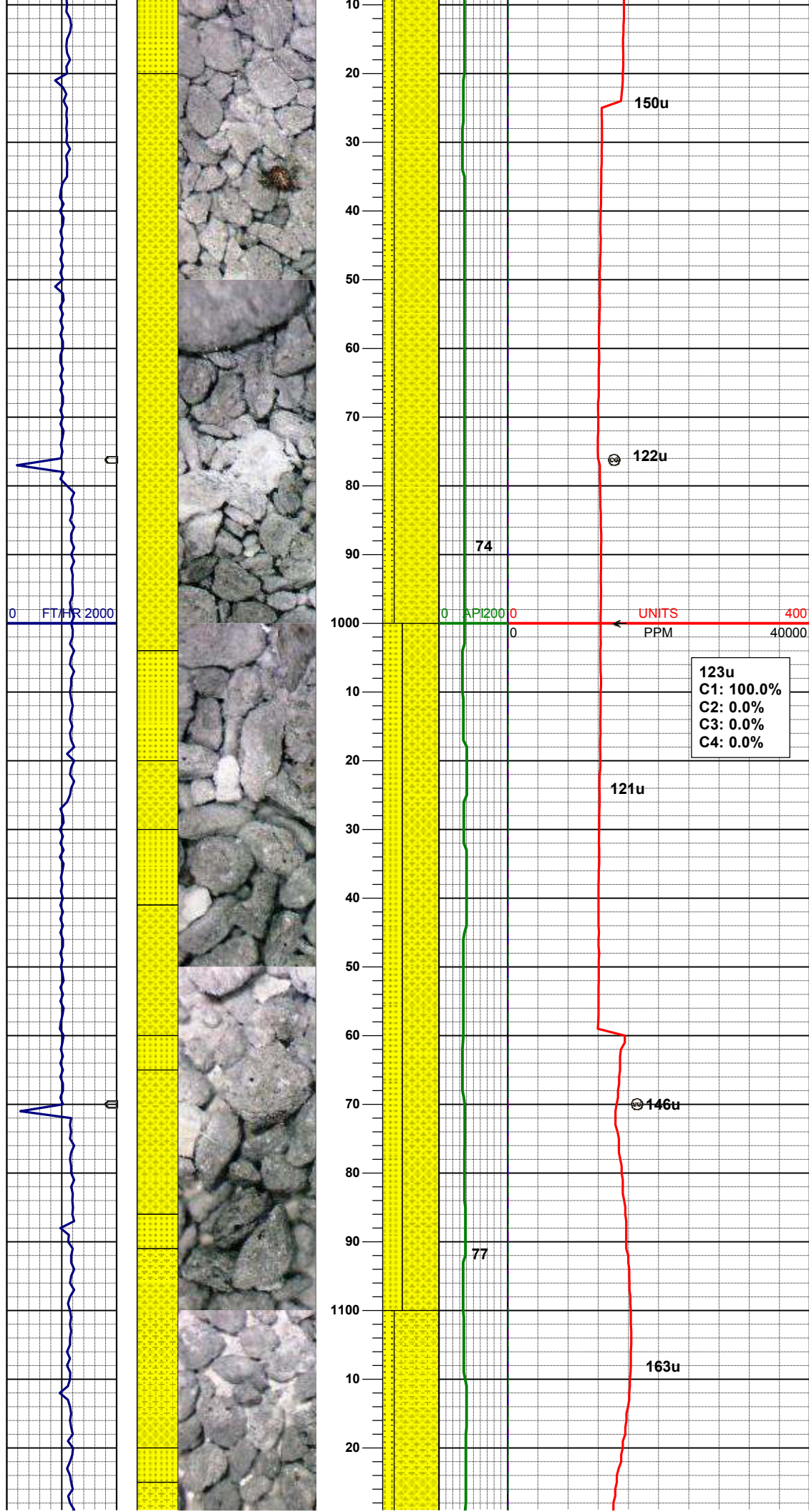
Surface Casing
@ 11:15 AM
03/26/2013

MD 738'
INC 0.5°
AZM 134.6°
TVD 738.00'

SS: wh - lt gy, mod firm, sbblky - sb
rdd, arg cmt
SHYSS: lt gy - gy, f gr, sbang -
sbrdd, mod srt, mod sft - frm, tr
phlog, arg cmt
30% Cement

131u
C1: 100.0%
C2: 0.0%
C3: 0.0%
C4: 0.0%

SS: wh - lt gy, mod firm, sbblky - sb
rdd, arg cmt
SHYSS: lt gy - gy, f gr, sbang -
sbrdd, mod srt, mod sft - frm, tr
phlog, arg cmt

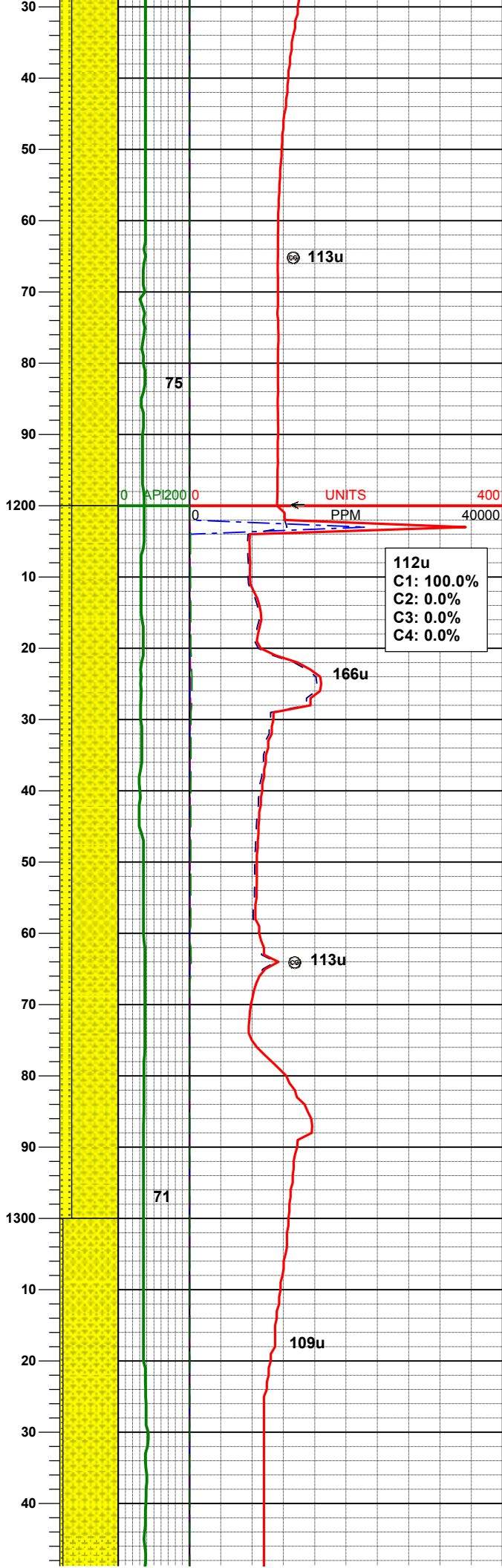
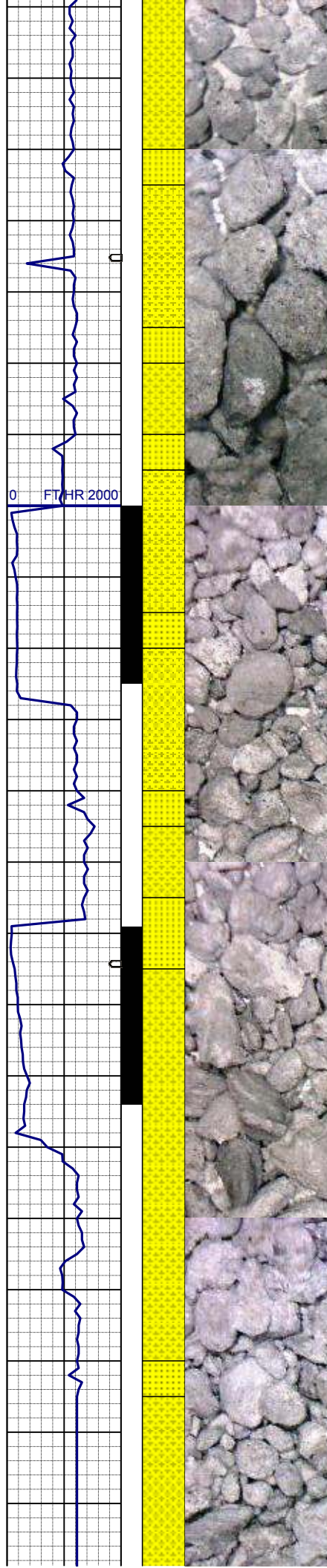


SHYSS: lt gy - gy, f gr, sbang -
sbrnidd, mod srt, mod sft - frm, tr
phlog, arg cmt
SS: wh - lt gy, mod firm,sbblky - sb
rnidd, arg cmt

MD	1021'
INC	0.8°
AZM	139.7°
TVD	1020.98'

SHYSS: lt gy - gy, f gr, sbang -
sbrnidd, mod srt, mod sft - frm, tr
phlog, arg cmt
SS: wh - lt gy, mod firm,sbblky - sb
rnidd, arg cmt

WT IN 8.60/ OUT 8.60
VIS IN 27/ OUT 27



SHYSS: lt gy - gy, f gr, sbang -
sbrnodd, mod srt, mod sft - frm, tr
phlog, arg cmt
SS: wh - lt gy, mod firm,sbblky - sb
rddd, arg cmt

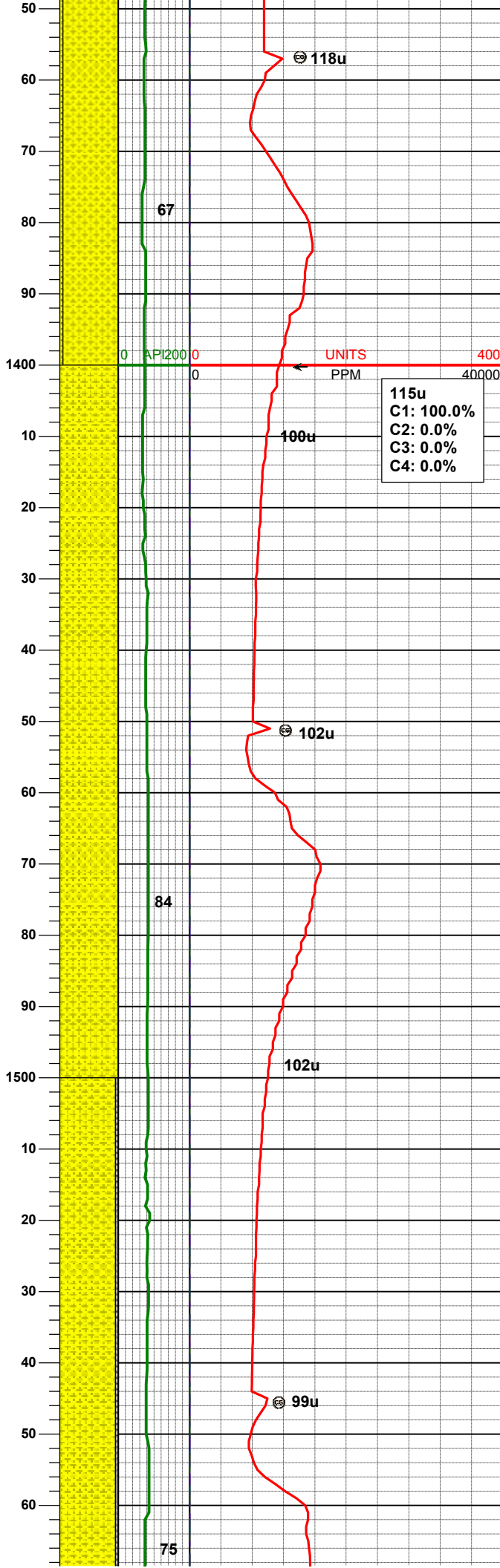
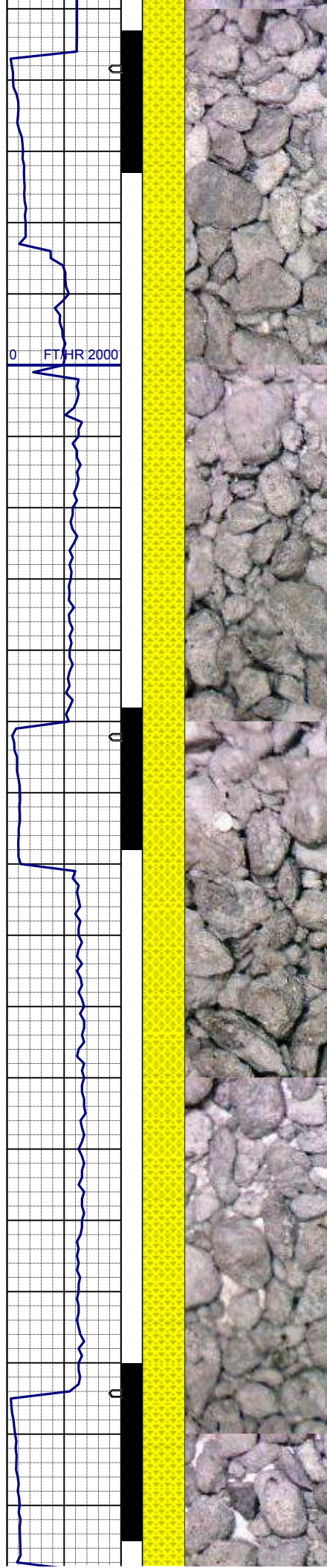
112u
C1: 100.0%
C2: 0.0%
C3: 0.0%
C4: 0.0%

MD 1210'
INC 2.4°
AZM 128.4°
TVD 1209.90'

SHYSS: lt gy - gy, f gr, sbang -
sbrnodd, mod srt, mod sft - frm, tr
phlog, arg cmt
SS: wh - lt gy, mod firm,sbblky - sb
rddd, arg cmt

MD 1309'
INC 5.9°
AZM 119.8°
TVD 1308.63'

SHYSS: lt gy - gy, f gr, sbang -
sbrnodd, mod srt, mod sft - frm, tr



sbmdd, mod srt, mod srt - frm, tr
phlog, arg cmt
SS: wh - lt gy, mod firm, sbblky - sb
rdd, arg cmt

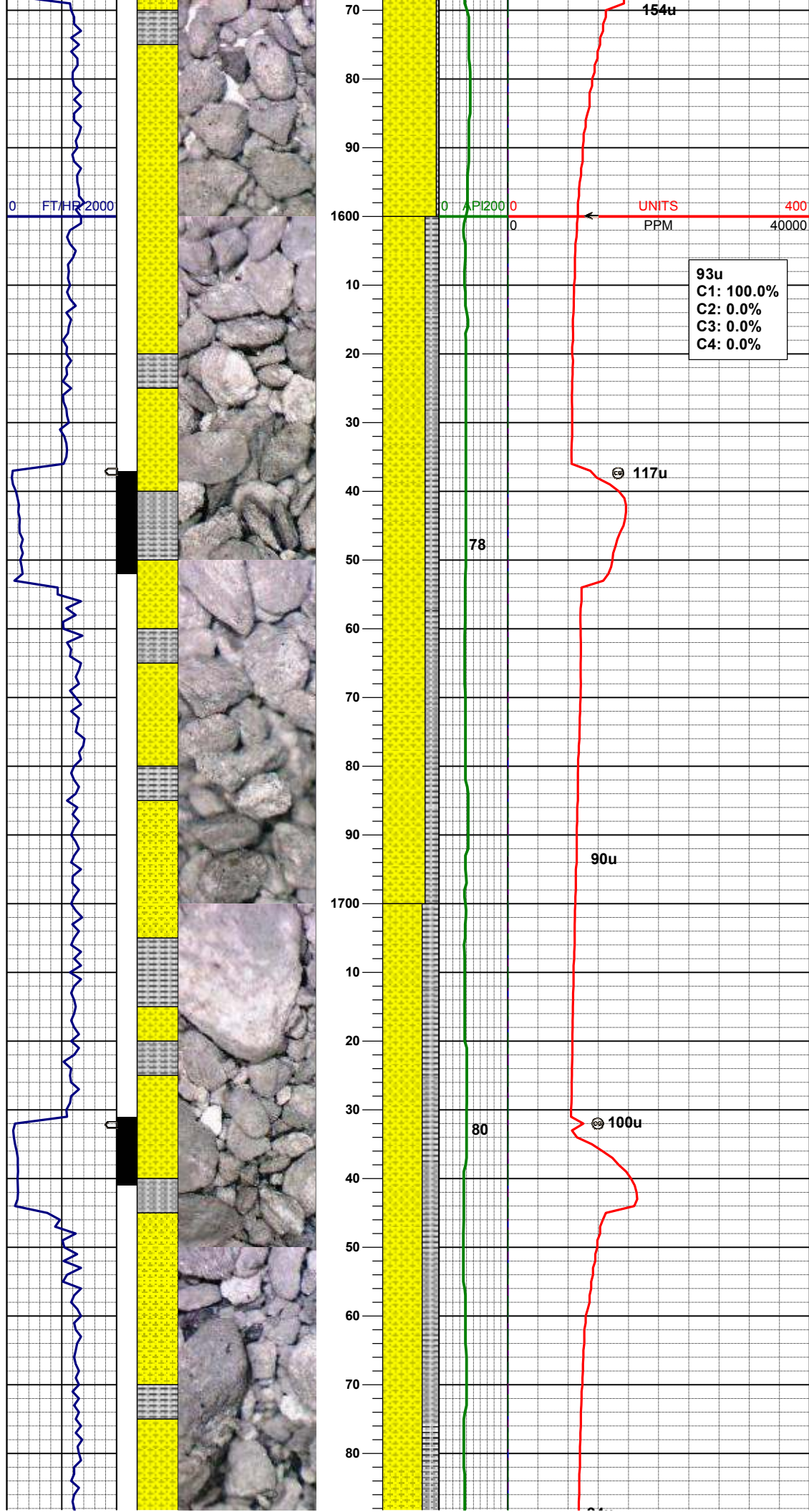
MD 1403'
INC 8.2°
AZM 113.3°
TVD 1401.91'

SHYSS: lt gy - gy, f gr, sbang -
sbrnrd, mod srt, mod sft - frm, tr
phlog, arg cmt

WT IN 8.60/ OUT 8.60
VIS IN 29/ OUT 29

MD 1495'
INC 9.9°
AZM 116.5°
TVD 1492.76'

SHYSS: lt gy - gy, f gr, sbang -
sbrnrd, mod srt, mod sft - frm, tr
phlog, tr glac, arg cmt
SLTYSH: m - lt gy-crmbn, occ dk gy,
sft - mod firm, sbblky - sbply, noncalc



MD 1588'
INC 12.2°
AZM 113.1°
TVD 1584.03'

93u
C1: 100.0%
C2: 0.0%
C3: 0.0%
C4: 0.0%

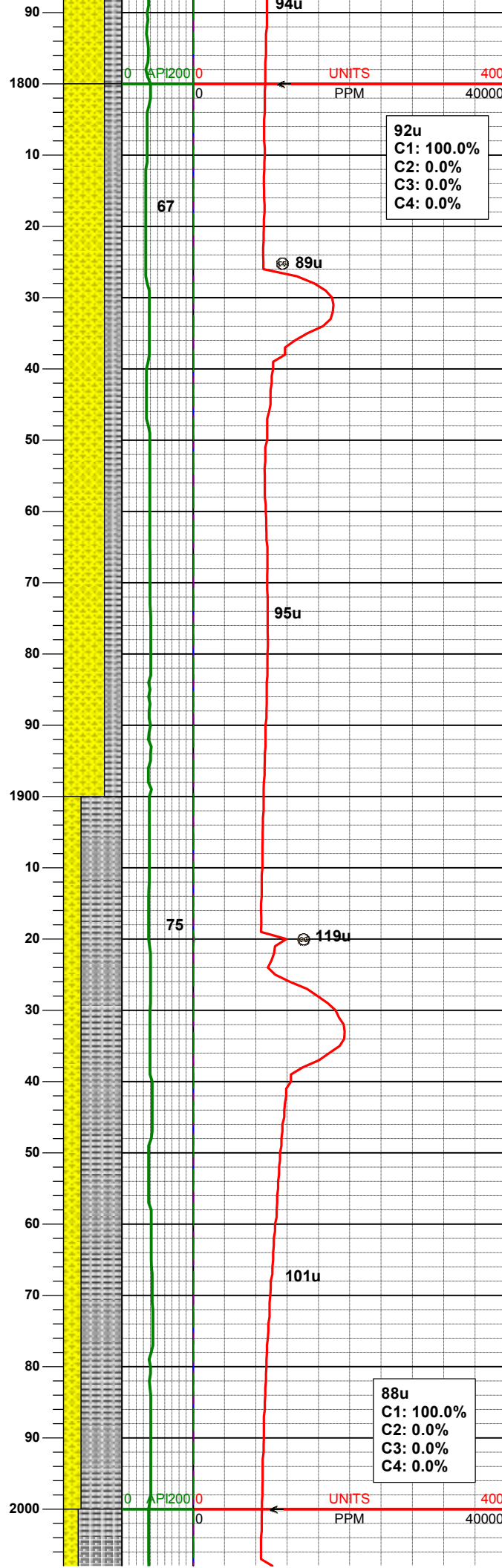
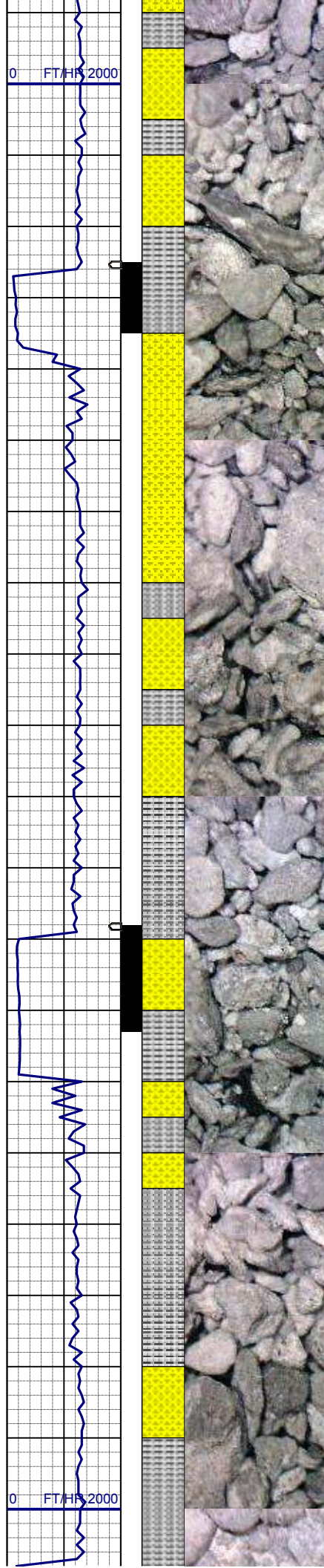
SHYSS: lt gy - gy, f gr, sbang -
sbrnnd, mod srt, mod sft - frm, tr
phlog, tr glac, arg cmt
SLTYSH: m - lt gy-crmbn, occ dk gy,
sft - mod firm, sbbiky - sbply, noncalc

MD 1682'
INC 14.0°
AZM 109.8°
TVD 1675.59'

WT IN 8.60/ OUT 8.60
VIS IN 30/ OUT 30

SHYSS: lt gy - gy, f gr, sbang -
sbrnnd, mod srt, mod sft - frm, tr
phlog, tr glac, arg cmt
SLTYSH: m - lt gy-crmbn, occ dk gy,
sft - mod firm, sbbiky - sbply, noncalc

MD 1776'
INC 15.6°
AZM 109.4°
TVD 1766.46'



SHYSS: lt gy - gy, f gr, sbang -
sbrnnd, mod srt, mod sft - frm, tr
phlog, tr glac, arg cmt
SLTYSH: m - lt gy-crmbn, occ dk gy,
sft - mod firm, sbblky - sbply, noncalc

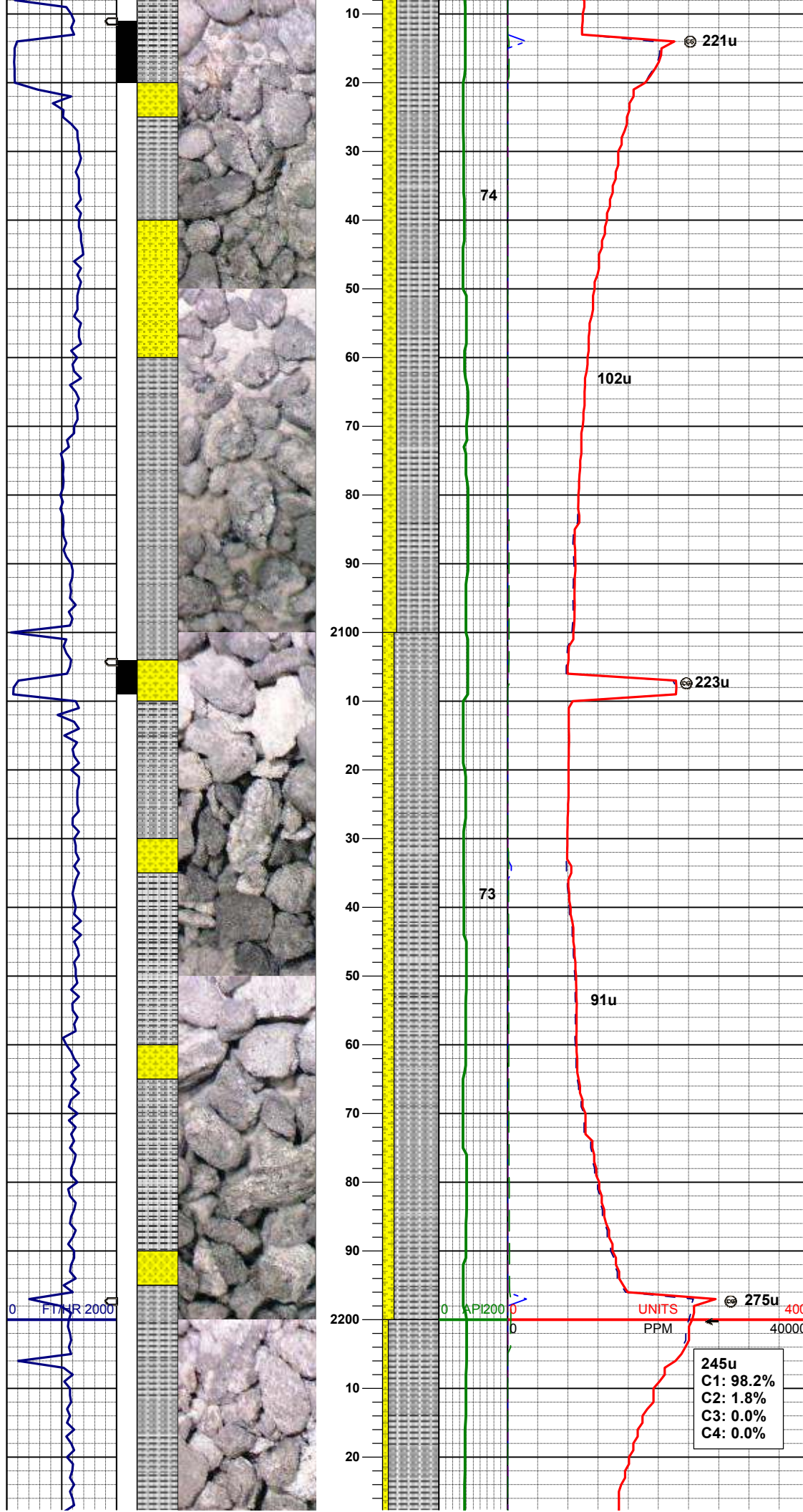
MD 1869'
INC 16.3°
AZM 109.4°
TVD 1855.88'

WT IN 8.55/ OUT 8.55
VIS IN 30/ OUT 30

SLTYSH: m - lt gy-crmbn, occ dk gy,
sft - mod firm, sbblky - sbply, noncalc
SHYSS: lt gy - gy, f gr, sbang -
sbrnnd, mod srt, mod sft - frm, tr
phlog, tr glac, arg cmt

MD 1962'
INC 17.0°
AZM 114.2°
TVD 1944.99'

WT IN 8.60/ OUT 8.60
VIS IN 28/ OUT 28



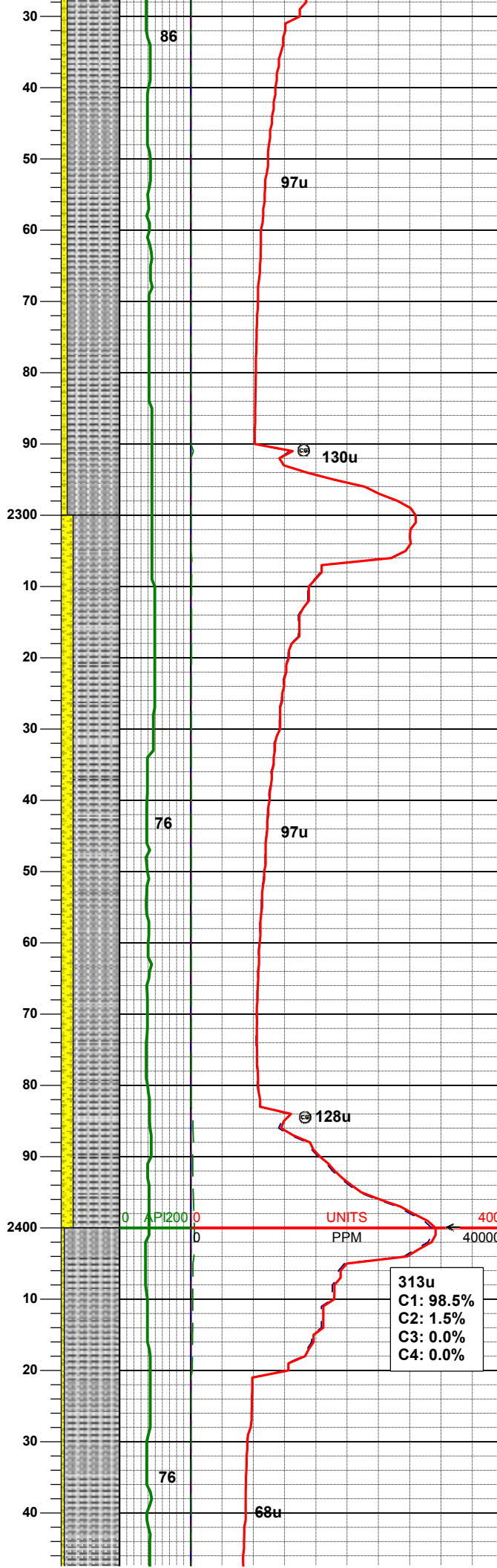
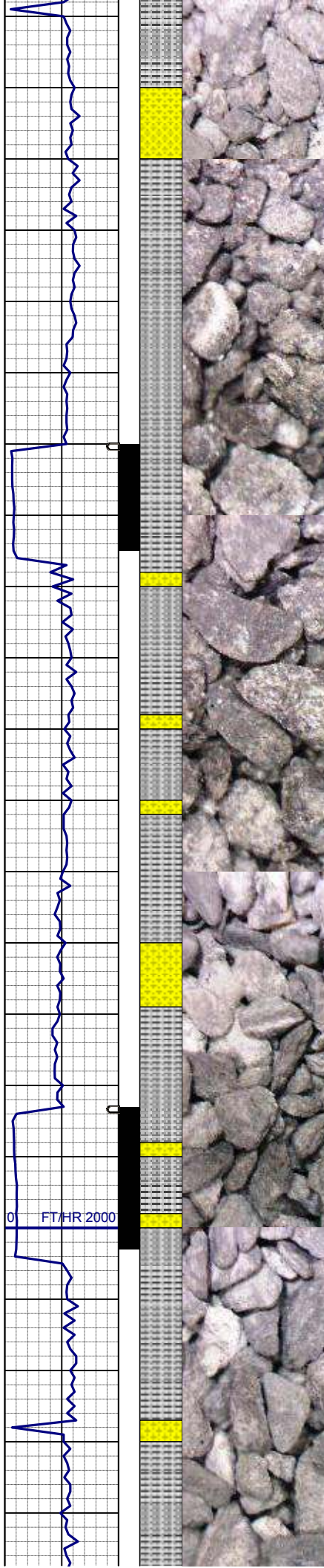
SLTYSH: m - lt gy, occ dk gy, sft -
mod firm, sbblky - sbply, noncalc
SHYSS: lt gy - gy, f gr, sbang -
sbrnnd, mod srt, mod sft - frm, tr
phlog, tr glac, arg cmt

MD	2055'
INC	16.5°
AZM	117.2°
TVD	2034.04'

MD	2148'
INC	15.3°
AZM	120.1°
TVD	2123.48'

SLTYSH: m - lt, occ dk gy, sft - mod
firm, sbblky - sbply, noncalc
SHYSS: lt gy - gy, f gr, sbang -
sbrnnd, mod srt, mod sft - frm, tr
phlog, tr glac, arg cmt

245u
C1: 98.2%
C2: 1.8%
C3: 0.0%
C4: 0.0%



MD 2241'
INC 14.1°
AZM 120.0°
TVD 2213.44'

SLTYSH: m - lt gy-crmbn, occ dk gy,
sft - mod firm, sbblky - sbplty, noncalc
SHYSS: lt gy - gy, f gr, sbang -
sbrndd, mod srt, mod sft - frm, tr
phlog, tr glac, arg cmt

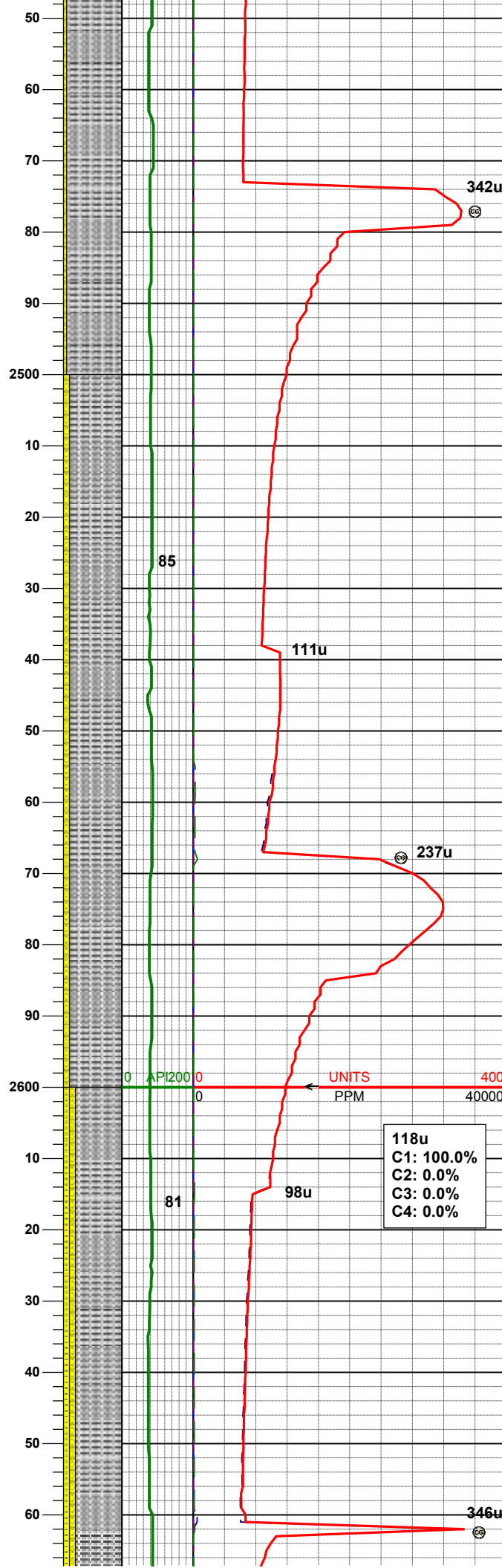
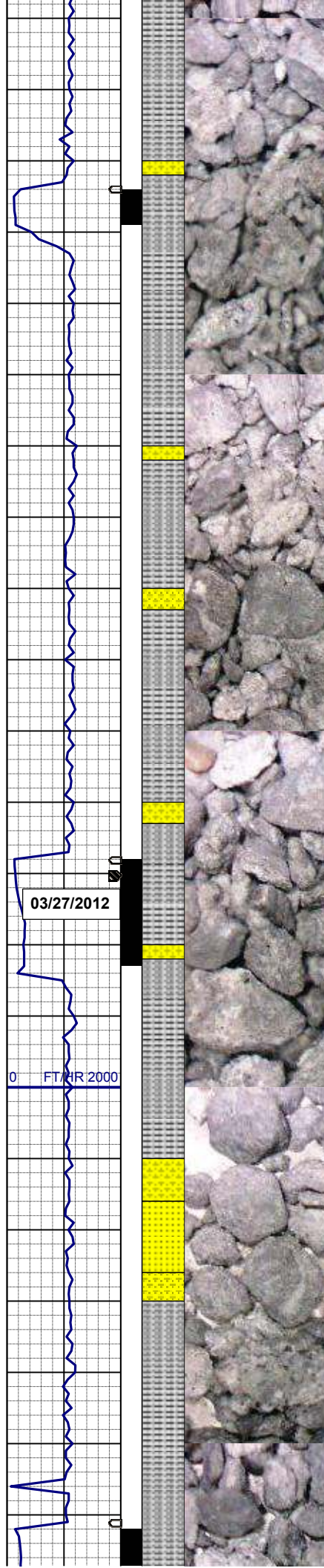
WT IN 8.60/ OUT 8.60
VIS IN 28/ OUT 28

MD 2334'
INC 15.1°
AZM 114.5°
TVD 2303.44'

SLTYSH: m - lt gy-crmbn, occ dk gy,
sft - mod firm, sbblky - sbplty, noncalc
SHYSS: lt gy - gy, f gr, sbang -
sbrndd, mod srt, mod sft - frm, tr
phlog, tr glac, arg cmt

MD 2425'
INC 17.0°
AZM 114.5°
TVD 2390.89'

SLTYSH: m - lt gy-crmbn, occ dk gy,
sft - mod firm, sbblky - sbplty, noncalc



SLTYSH: m - lt gy - crmbn, occ dk gy,
sft - mod firm, sbbiky - sbply, noncalc
SHYSS: lt gy - gy, f gr, sbang -
sbrnnd, mod srt, mod sft - frm, tr
phlog, tr glac, arg cmt

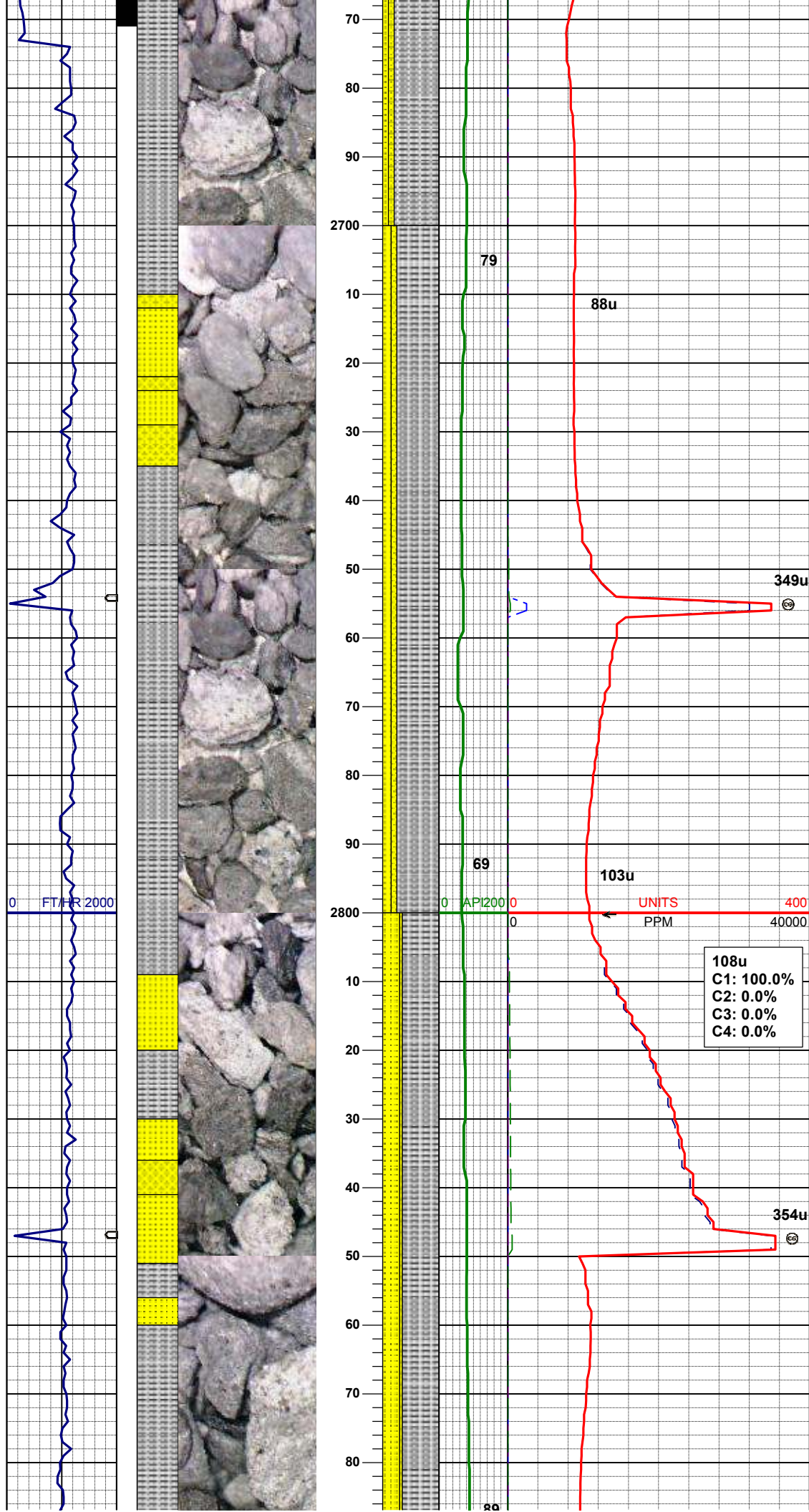
WT IN 8.65/ OUT 8.65
VIS IN 30/ OUT 30

MD	2519'
INC	16.3°
AZM	117.7°
TVD	2480.95'

SLTYSH: m - lt gy-crmbn, occ dk gy,
sft - mod firm, sbbiky - sbply, noncalc
SHYSS: lt gy - gy, f gr, sbang -
sbrnnd, mod srt, mod sft - frm, tr
phlog, tr glac, arg cmt

MD	2612'
INC	17.1°
AZM	115.6°
TVD	2570.03'

SLTYSH: m - lt gy-crmbn, occ dk gy,
sft - mod firm, sbbiky - sbply, noncalc
SHYSS: lt gy - gy, f gr, sbang -
sbrnnd, mod srt, mod sft - frm, tr
phlog, tr glac, arg cmt
SS: wh - lt gy, mod firm, sbbiky - sb
rndd, arg cmt



MD 2705'
INC 18.1°
AZM 117.1°
TVD 2658.67'

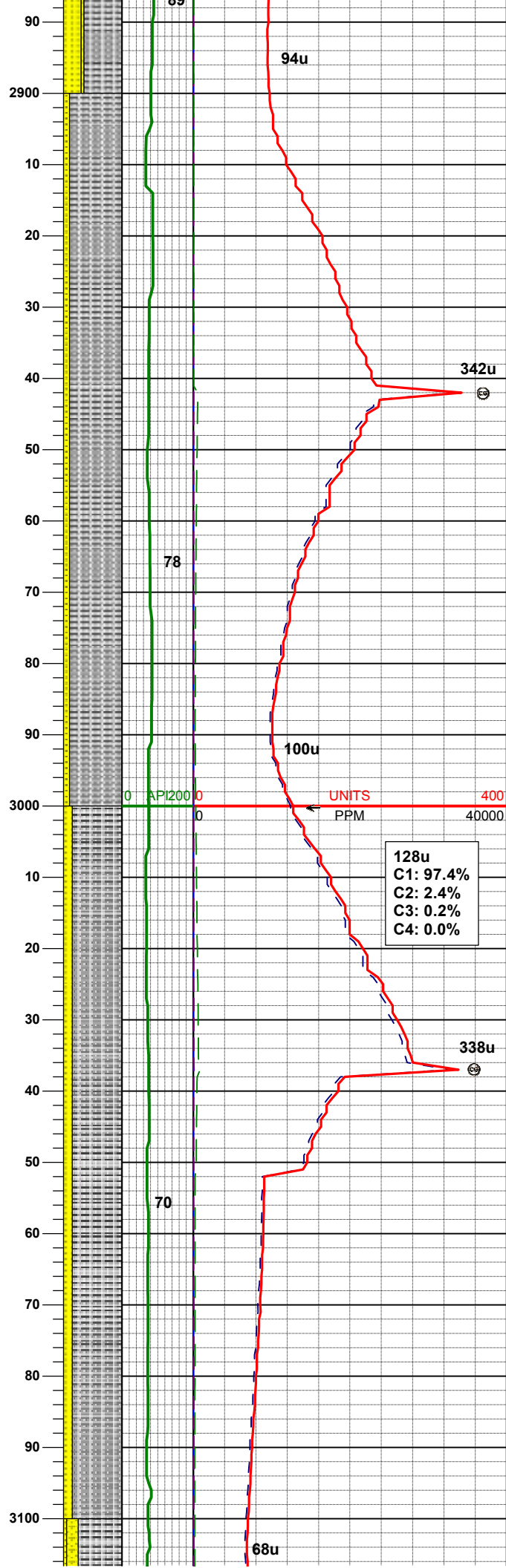
SLTYSH: m - lt gy-crmbn, occ dk gy,
sft - mod firm, sbblky - sbply, noncalc
SHYSS: lt gy - gy, f gr, sbang -
sbrnnd, mod srt, mod sft - frm, tr
phlog, tr glac, arg cmt
SS: wh - lt gy, mod firm,sbblky - sb
rdd, occ glau, arg cmt

MD 2798'
INC 19.0°
AZM 118.9°
TVD 2746.84'

SLTYSH: m - lt gy-crmbn, occ dk gy,
sft - mod firm, sbblky - sbply, noncalc
SHYSS: lt gy - gy, f gr, sbang -
sbrnnd, mod srt, mod sft - frm, tr
phlog, tr glac, arg cmt
SS: wh - lt gy, mod firm,sbblky - sb
rdd, occ glau, arg cmt

WT IN 8.85/ OUT 8.85
VIS IN 28/ OUT 28

MD 2893'
INC 17.8°
AZM 118.8°
TVD 2836.98'



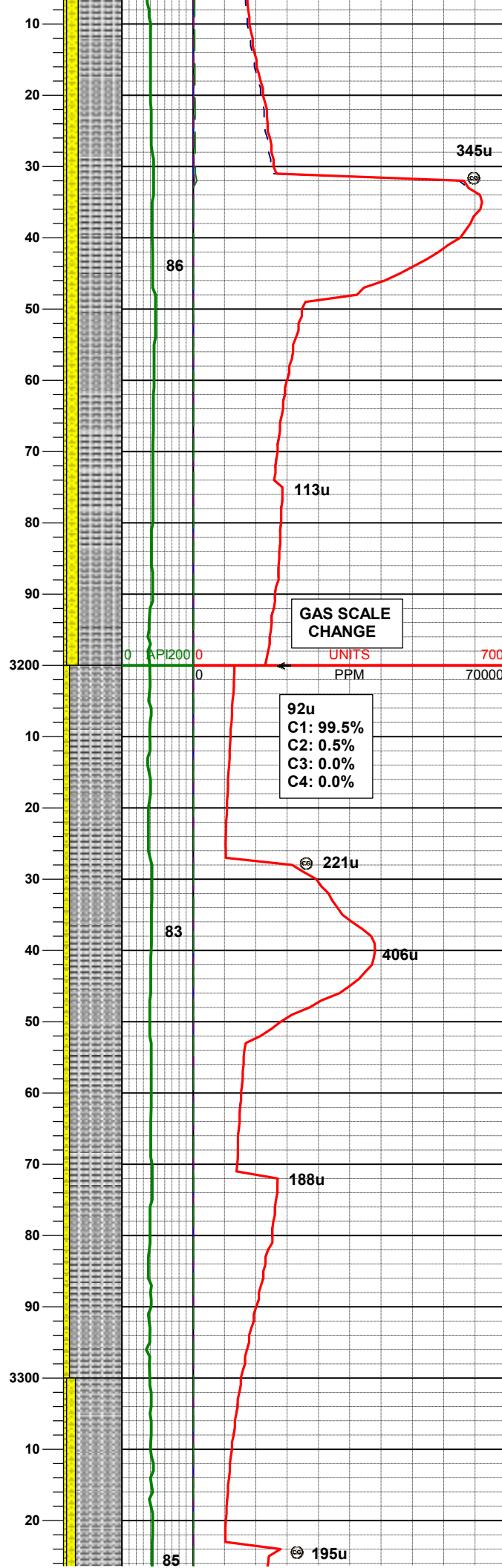
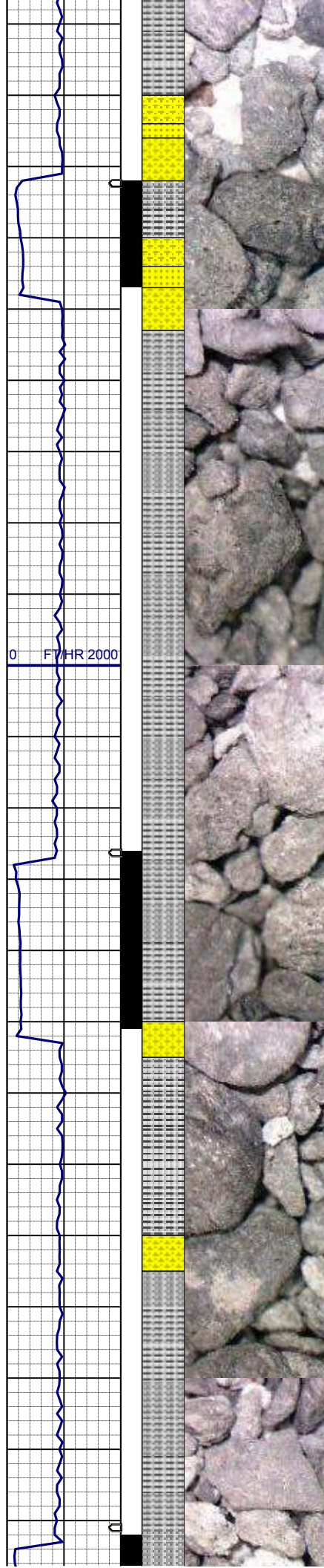
SLTYSH: mgy-brn, occ dk gy, sft -
mod firm, sbbiky - sbply, arg mtx, occ
rthy mtx, noncalc
SS: wh - lt gy, sme brn - tan, mod
firm, sbbiky - sb rdd, tr glau, arg cmt

MD 2988'
INC 17.5°
AZM 118.8°
TVD 2927.51'

SLTYSH: mgy-brn, occ dk gy, sft -
mod firm, sbbiky - sbply, arg mtx, occ
rthy mtx, noncalc
SS: wh - lt gy, sme brn - tan, mod
firm, sbbiky - sb rdd, tr glau, arg cmt

MD 3083'
INC 16.2°
AZM 118.9°
TVD 3018.43'

WT IN 8.85/ OUT 8.85
VIS IN 28/ OUT 28



SLTYSH: m - lt gy-crmbn, occ dk gy,
sft - mod firm, sbblky - sbply, noncalc
SHYSS: lt gy - gy, f gr, sbang -
sbrnnd, mod srt, mod sft - frm, tr
phlog, tr glauc, arg cmt
SS: wh - lt gy, mod firm, sbblky - sb
rdd, arg cmt

MD 3177'
INC 15.6°
AZM 116.8°
TVD 3108.83'

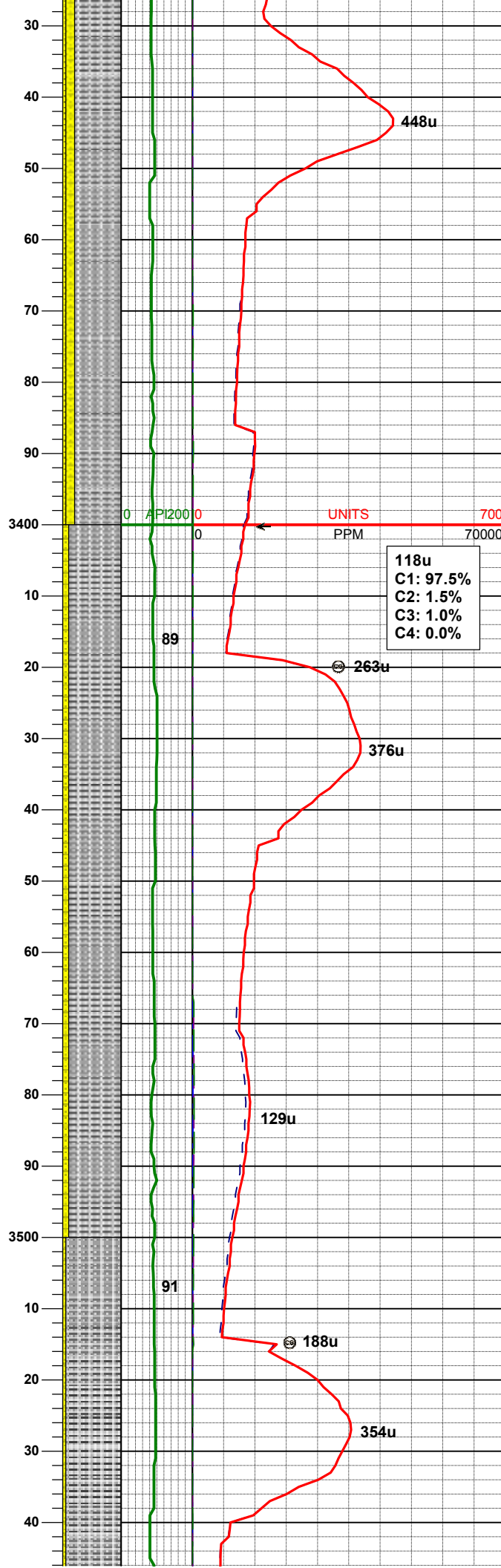
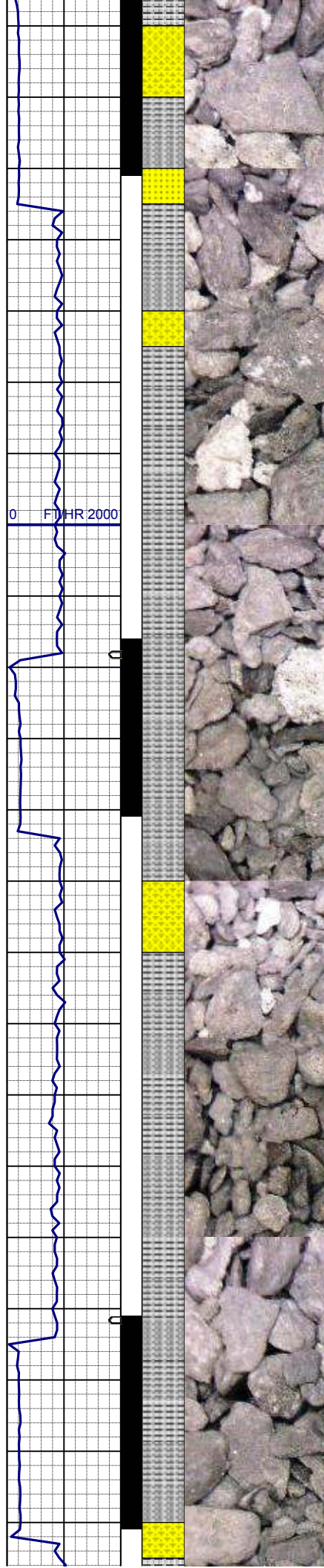
GAS SCALE
CHANGE

UNITS
PPM

92u
C1: 99.5%
C2: 0.5%
C3: 0.0%
C4: 0.0%

SLTYSH: m - lt gy-crmbn, occ dk gy,
sft - mod firm, sbblky - sbply, noncalc
SHYSS: lt gy - gy, f gr, sbang -
sbrnnd, mod srt, mod sft - frm, tr
phlog, tr glauc, arg cmt

MD 3272'
INC 16.1°
AZM 114.3°
TVD 3200.22'



SLTYSH: mgy-brn, occ dk gy, sft -
mod firm, sbblky - sbply, arg mtx, occ
rthy mtx, noncalc
SHYSS: lt gy - gy, f gr, sbang -
sbrnnd, mod srt, mod sft - frm, tr
phlog, tr glauc, arg cmt
SS: wh - lt gy, sme brn - tan, mod
firm, sbblky - sb rndd, tr glau, arg cmt

MD 3367'
INC 17.2°
AZM 118.8°
TVD 3291.24'

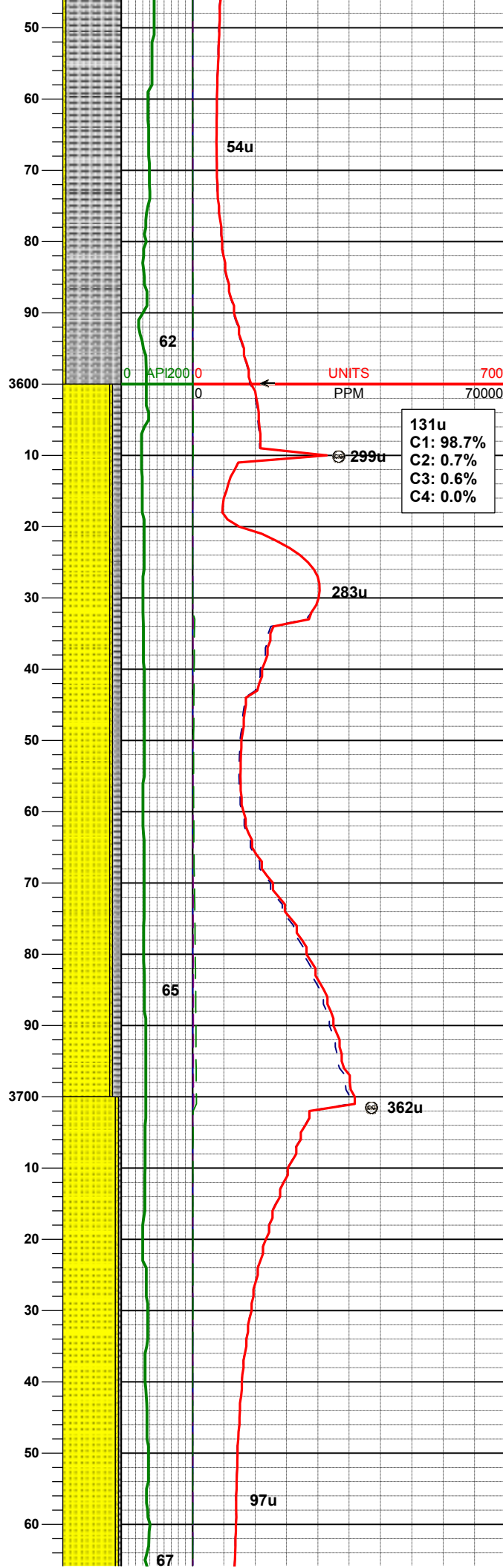
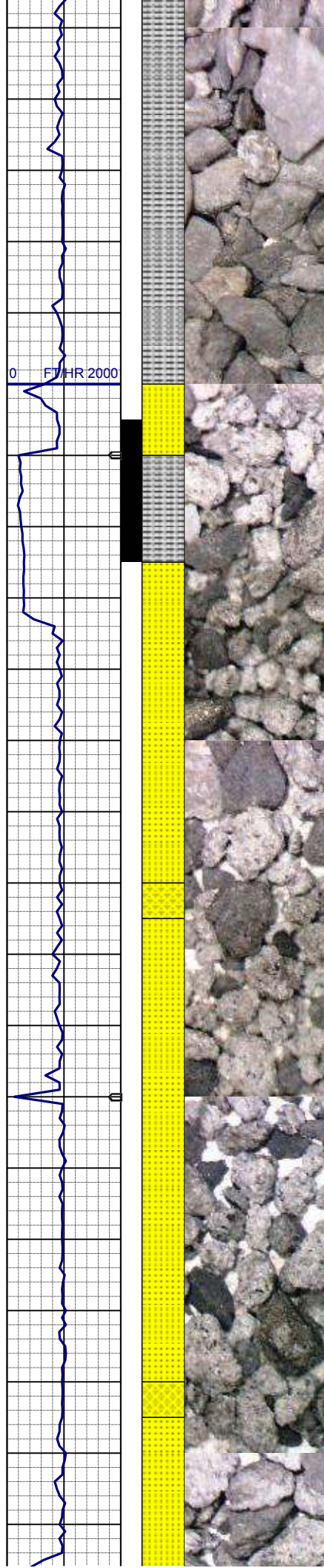
WT IN 8.65/ OUT 8.65
VIS IN 28/ OUT 28

118u
C1: 97.5%
C2: 1.5%
C3: 1.0%
C4: 0.0%

SLTYSH: mgy-brn, occ dk gy, sft -
mod firm, sbblky - sbply, arg mtx, occ
rthy mtx, noncalc
SHYSS: lt gy - gy, f gr, sbang -
sbrnnd, mod srt, mod sft - frm, tr
phlog, tr glauc, arg cmt

MD 3462'
INC 17.5°
AZM 113.5°
TVD 3317.92'

SLTYSH: mgy-brn, occ dk gy, sft -
mod firm, sbblky - sbply, arg mtx, occ



rthy mtx, noncalc
SHYSS: lt gy - gy, f gr, sbang -
sbrnnd, mod srt, mod sft - frm, tr
phlog, tr glauc, arg cmt

MD 3556'
INC 18.8°
AZM 112.9°
TVD 3471.25'

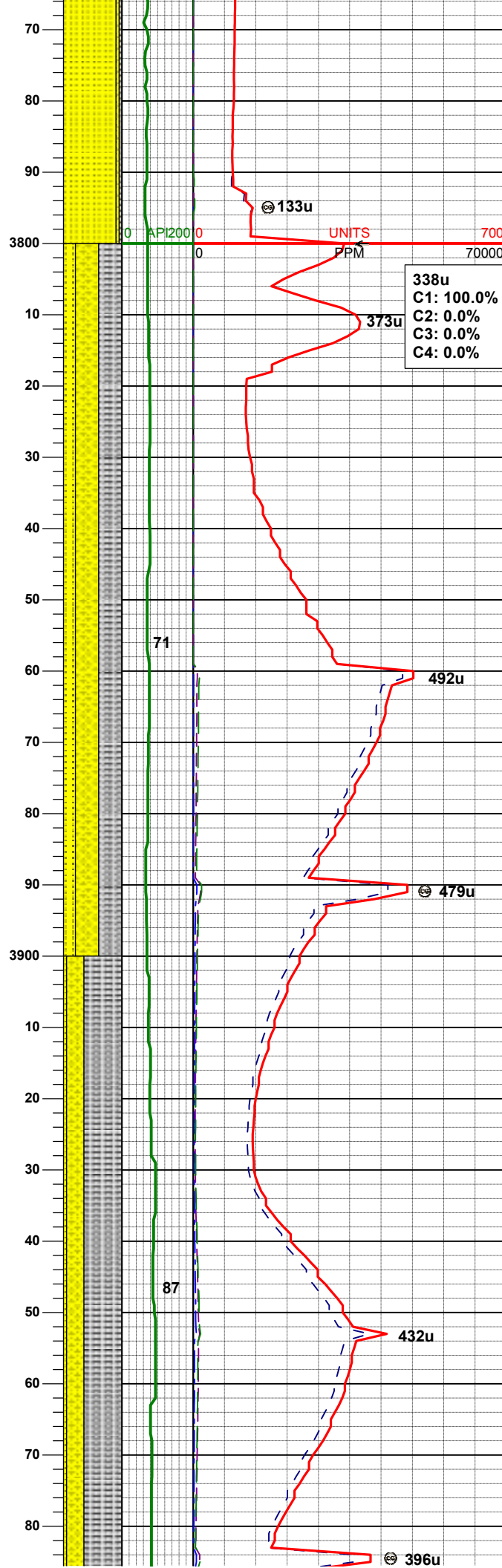
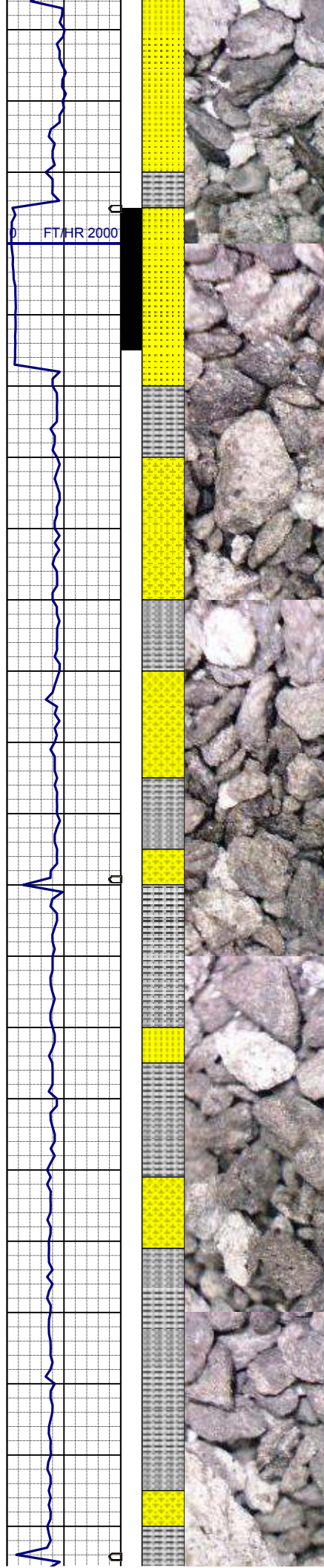
WT IN 8.80/ OUT 8.80
VIS IN 27/ OUT 27

MD 3651'
INC 20.9°
AZM 114.7°
TVD 3560.60'

SS: wh - lt gy, sme brn - tan, mod
firm, sbbiky - sb rndd, mod-p srt, tr
glau, arg cmt
SLTYSH: mgy-brn, occ dk gy, sft -
mod firm, sbbiky - sbply, arg mtx, occ
rthy mtx, noncalc
SHYSS: lt gy - gy, f gr, sbang -
sbrnnd, mod srt, mod sft - frm, tr
phlog, tr glauc, arg cmt

MD 3746'
INC 22.3°
AZM 115.9°
TVD 3648.92'

SS: wh - lt gy, sme brn - tan, mod
firm, sbbiky - sb rndd, mod-p srt, tr
glau, arg cmt
SLTYSH: mgy-brn, occ dk gy, sft -
mod firm, sbbiky - sbply, arg mtx, occ
rthy mtx, noncalc
SHYSS: lt gy - gy, f gr, sbang -
sbrnnd, mod srt, mod sft - frm, tr
phlog, tr glauc, arg cmt



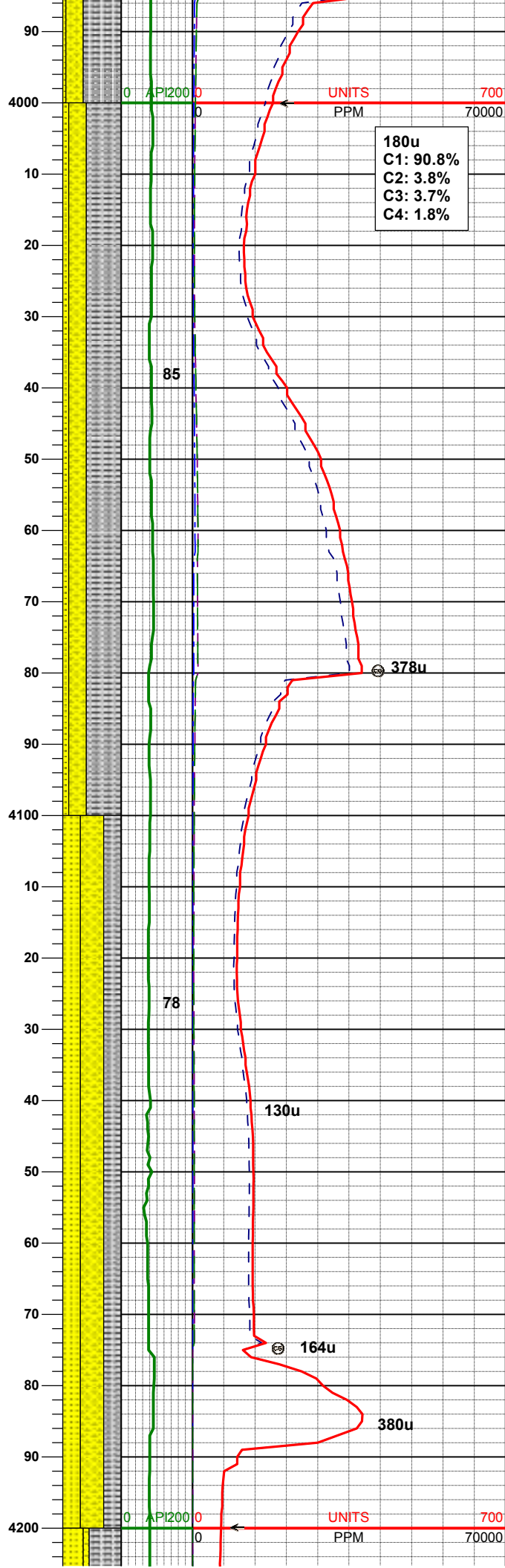
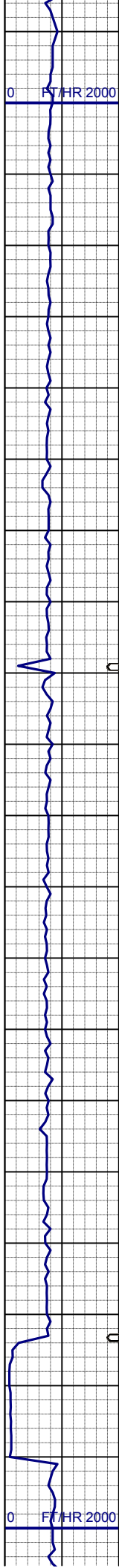
MD 3840'
INC 21.2°
AZM 116.1°
TVD 3736.23'

SLTYSH: mgy-brn, occ dk gy, sft -
mod firm, sbblky - sbply, arg mtx, occ
rthy mtx, noncalc
SHYSS: lt gy - gy, f gr, sbang -
sbrnnd, mod srt, mod sft - frm, tr
phlog, tr glauc, arg cmt
SS: wh - lt gy, sme brn - tan, mod
firm, sbblky - sb nndd, mod-p srt, tr
glau, arg cmt

WT IN 8.85/ OUT 8.85
VIS IN 27/ OUT 27

MD 3935'
INC 20.6°
AZM 115.6°
TVD 3824.98'

SLTYSH: mgy-brn, occ dk gy, sft -
mod firm, sbblky - sbply, arg mtx, occ
rthy mtx, noncalc
SHYSS: lt gy - gy, f gr, sbang -
sbrnnd, mod srt, mod sft - frm, tr
phlog, tr glauc, arg cmt
SS: wh - lt gy, sme brn - tan, mod
firm, sbblky - sb nndd, mod-p srt, tr
glau, arg cmt

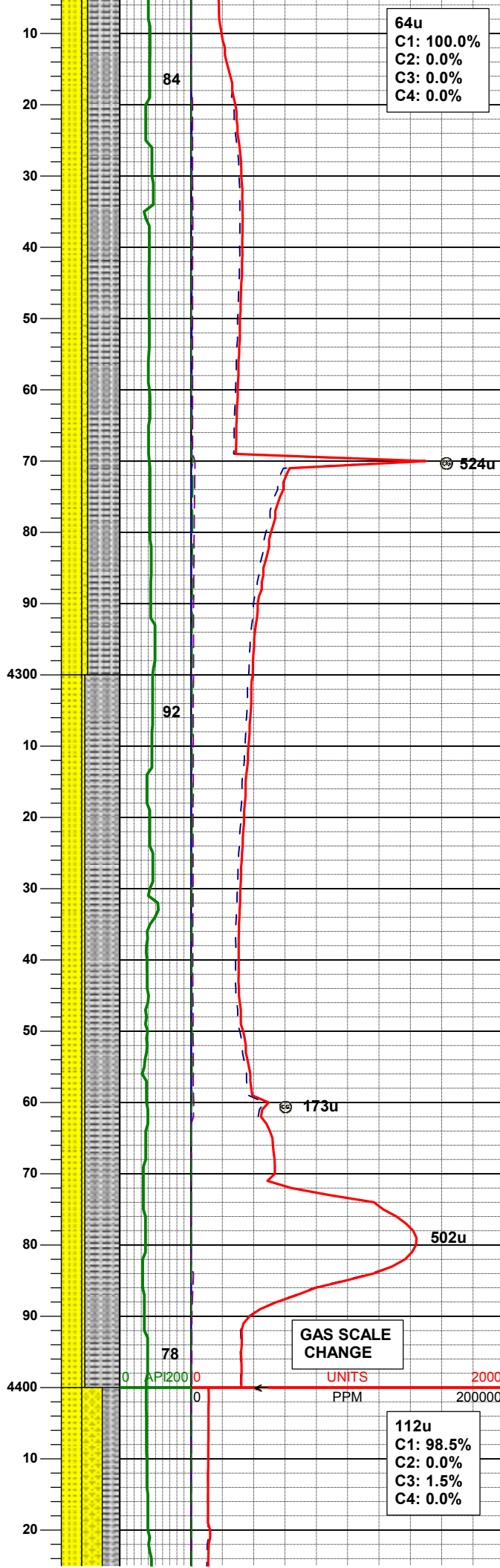
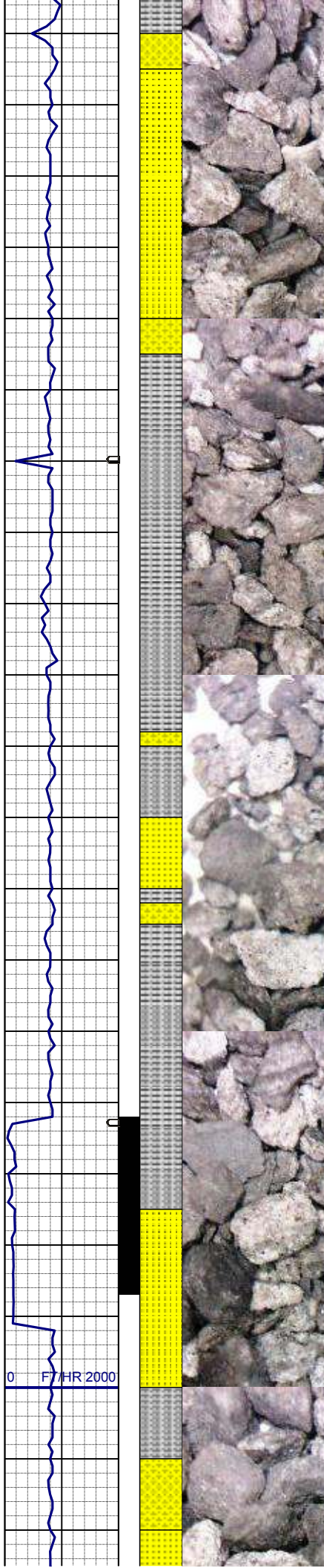


MD 4030'
INC 18.7°
AZM 115.9°
TVD 3914.44'

SLTYSH: mgy-brn, occ dk gy, sft -
mod firm, sbblky - sbply, arg mtx, occ
rthy mtx, noncalc
SHYSS: lt gy - gy, f gr, sbang -
sbrnnd, mod srt, mod sft - frm, tr
phlog, tr glauc, arg cmt
SS: wh - lt gy, sme brn - tan, mod
firm, sbblky - sb rnnd, mod-p srt, occ
glau, arg cmt

MD 4124'
INC 17.1°
AZM 116.5°
TVD 4003.89'

SHYSS: lt gy - gy, f gr, sbang -
sbrnnd, mod srt, mod sft - frm, tr
phlog, tr glauc, arg cmt
SS: wh - lt gy, sme brn - tan, mod
firm, sbblky - sb rnnd, mod-p srt, occ
glau, arg cmt
SLTYSH: mgy-brn, occ dk gy, sft -
mod firm, sbblky - sbply, arg mtx, occ
rthy mtx, noncalc



64u
C1: 100.0%
C2: 0.0%
C3: 0.0%
C4: 0.0%

MD 4219'
INC 16.7°
AZM 114.7°
TVD 4094.79'

SLTYSH: mgy-brn, occ dk gy, sft -
mod firm, sbblky - sbply, arg mtx, occ
rthy mtx, noncalc
SS: wh - lt gy, sme brn - tan, mod
firm, sbblky - sb rdd, mod-p srt, occ
glau, arg cmt
SHYSS: lt gy - gy, f gr, sbang -
sbrdd, mod srt, mod sft - frm, tr
phlog, tr glauc, arg cmt

MD 4313'
INC 14.3°
AZM 114.9°
TVD 4185.36'

SLTYSH: mgy-brn, occ dk gy, sft -
mod firm, sbblky - sbply, arg mtx, occ
rthy mtx, noncalc
SS: wh - lt gy, sme brn - tan, mod
firm, sbblky - sb rdd, mod-p srt, occ
glau, arg cmt
SHYSS: lt gy - gy, f gr, sbang -
sbrdd, mod srt, mod sft - frm, tr
phlog, tr glauc, arg cmt

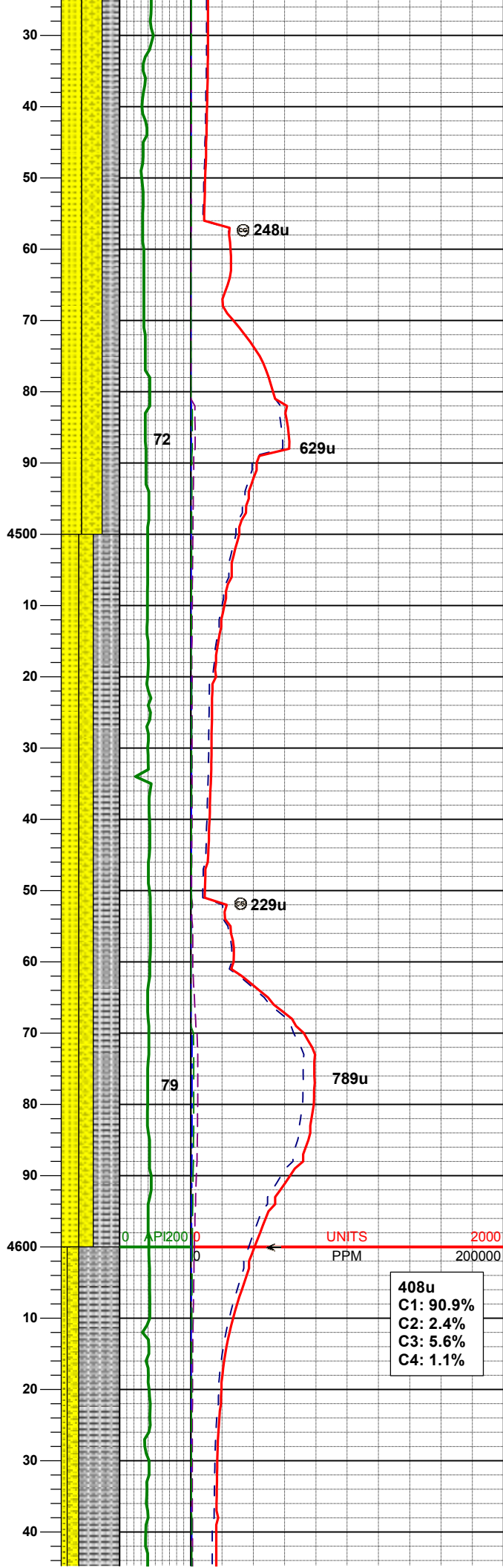
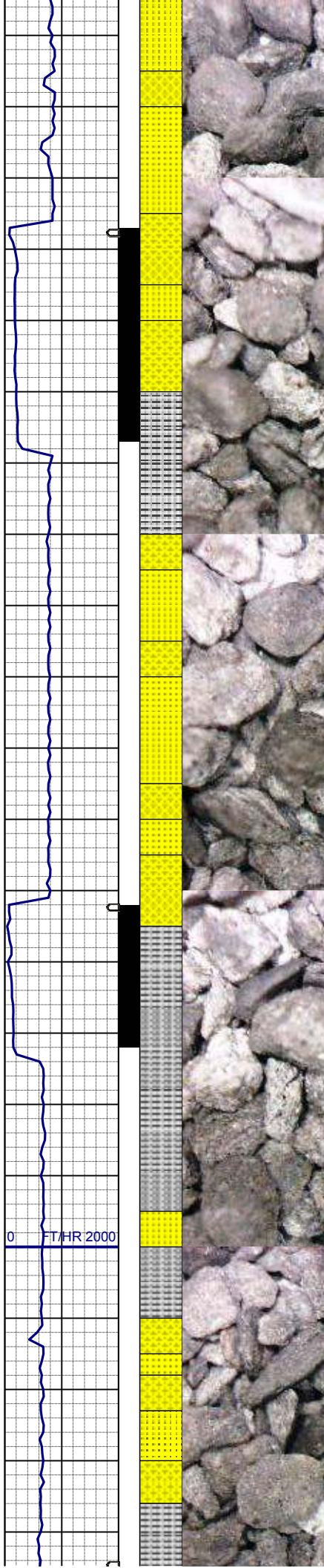
WT IN 8.80/ OUT 8.80
VIS IN 27/ OUT 27

MD 4408'
INC 14.3°
AZM 117.2°
TVD 4277.42'

112u
C1: 98.5%
C2: 0.0%
C3: 1.5%
C4: 0.0%

GAS SCALE
CHANGE

UNITS
PPM



SS: wh - lt gy, sme brn - tan, mod
firm, sbbiky - sb rndd, mod-p srt, occ
glau, arg cmt
SHYSS: lt gy - gy, f gr, sbang -
sbrndd, mod srt, mod sft - frm, tr
phlog, tr glauc, arg cmt
SLTYSH: mgy-brn, occ dk gy, sft -
mod firm, sbbiky - sbply, arg mtx, occ
rthy mtx, noncalc

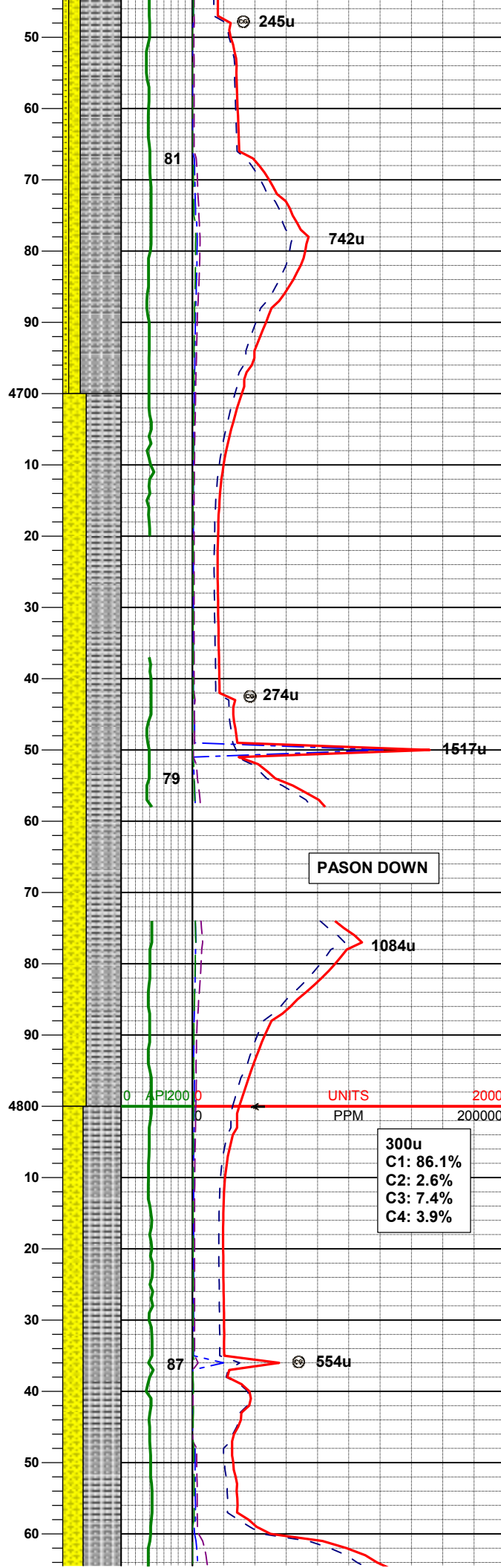
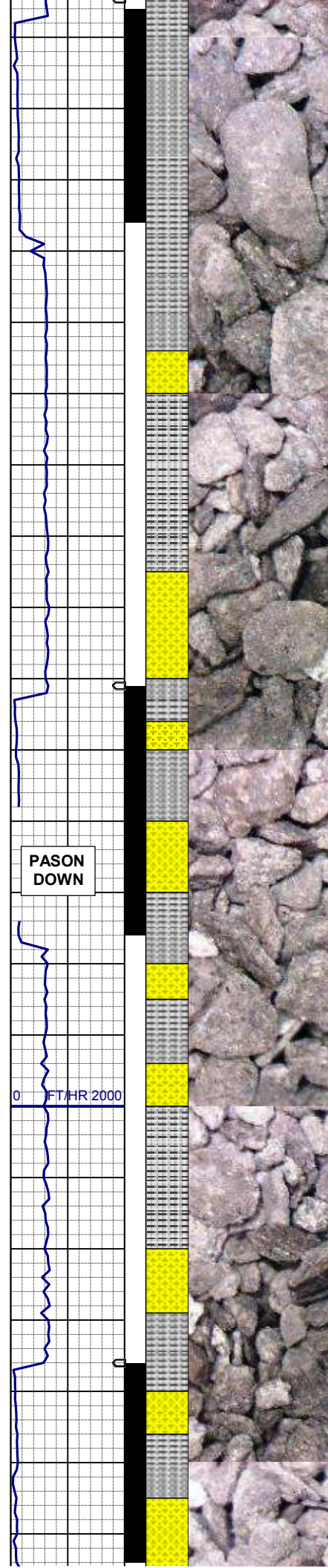
MD 4503'
INC 16.1°
AZM 117.7°
TVD 4369.09'

SLTYSH: mgy-brn, occ dk gy, sft -
mod firm, sbbiky - sbply, arg mtx, occ
rthy mtx, noncalc
SS: wh - lt gy, sme brn - tan, mod
firm, sbbiky - sb rndd, mod-p srt, occ
glau, arg cmt
SHYSS: lt gy - gy, f gr, sbang -
sbrndd, mod srt, mod sft - frm, tr
phlog, tr glauc, arg cmt

MD 4597'
INC 15.1°
AZM 116.5°
TVD 4459.63'

408u
C1: 90.9%
C2: 2.4%
C3: 5.6%
C4: 1.1%

SLTYSH: mgy-brn, occ dk gy, sft -



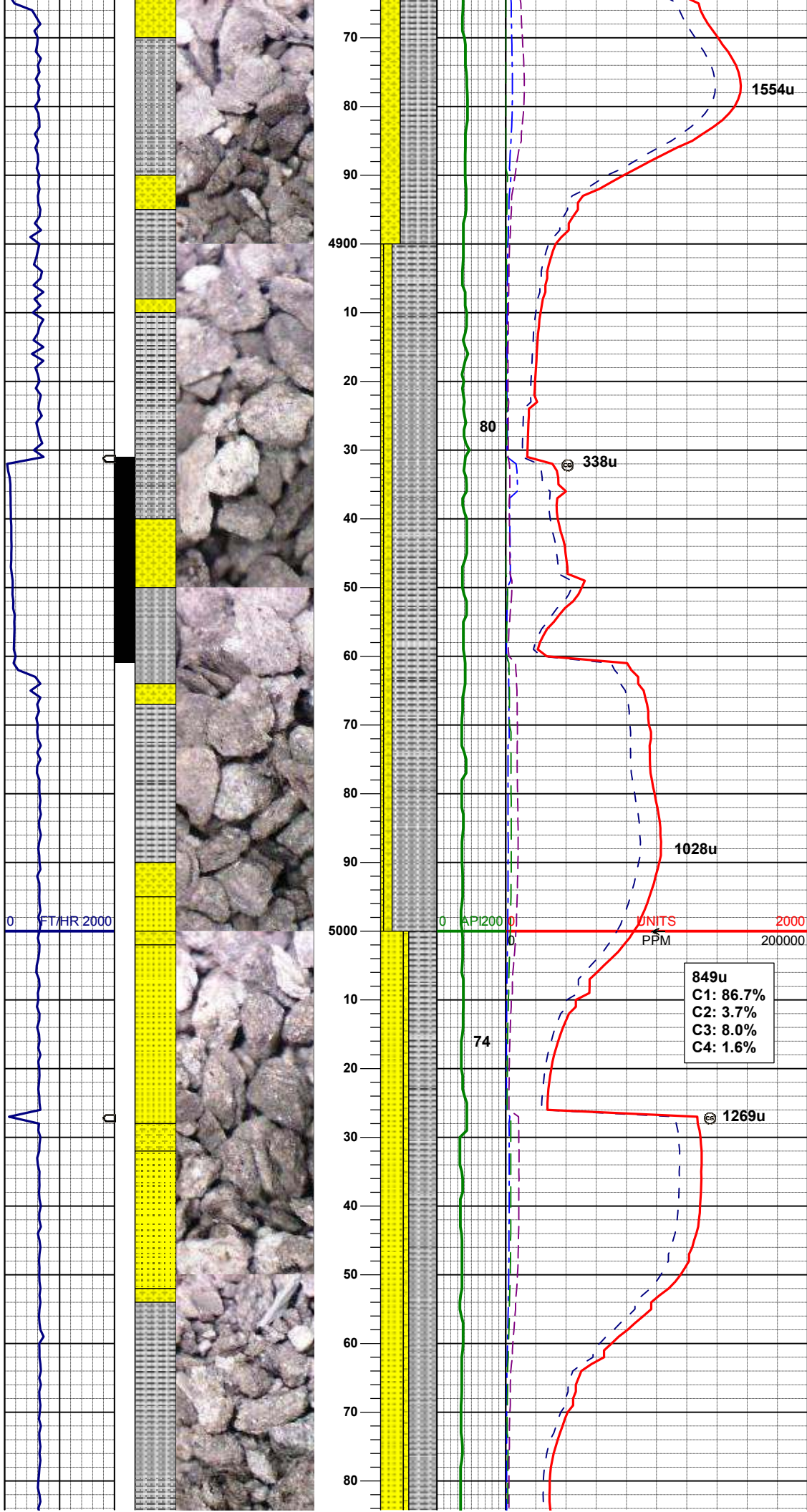
mod firm, sbblky - sbplty, arg mtx, occ
rthy mtx, noncalc
SHYSS: lt gy - gy, f gr, sbang -
sbrnrd, mod srt, mod sft - frm, tr
phlog, tr glauc, arg cmt
SS: wh - lt gy, sme brn - tan, mod
firm, sbblky - sb rmd, mod-p srt, occ
glau, arg cmt

MD	4692'
INC	15.2°
AZM	118.8°
TVD	4551.33'

SLTYSH: mgy-brn, occ dk gy, sft -
mod firm, sbblky - sbplty, arg mtx, occ
rthy mtx, noncalc
SHYSS: lt gy - gy, f gr, sbang -
sbrnodd, mod srt, mod sft - frm, tr
phlog, tr glauc, arg cmt

MD	4787'
INC	16.4°
AZM	119.1°
TVD	4642.84'

SLTYSH: mgy-brn, occ dk gy, sft -
mod firm, sbblky - sbply, arg mtx
grdg- rthy mtx, noncalc
SHYSS: m gy, occ dkgy, f gr, sbang -
sbrnnd, mod srt, mod sft - frm,
occplogh, tr glauc, arg cmt



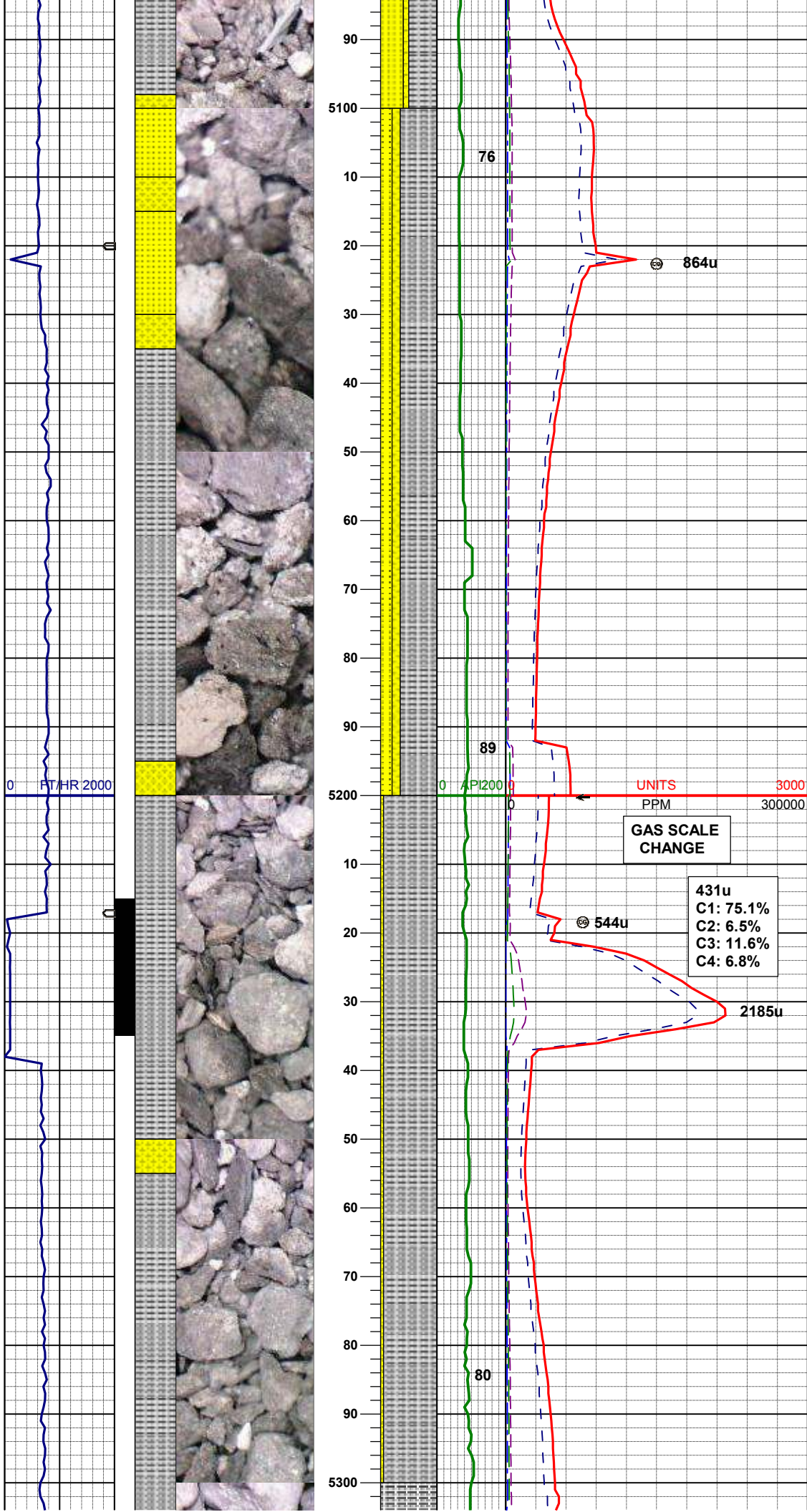
MD 4882'
INC 15.9°
AZM 112.8°
TVD 4734.00'

SLTYSH: mgy-brn, occ dk gy, sft -
mod firm, sbblky - sbply, arg mtx
grdg- rthy mtx, noncalc
SHYSS: m gy, occ dkgy, f gr, sbang -
sbrnnd, mod srt, mod sft - frm,
occphlog, tr glauc, arg cmt
SS: wh - lt gy, tr brn - tan, mod
firm, sbblky - sb rnnd, mod-p srt, tr
glau, arg cmt

MD 4977'
INC 16.9°
AZM 110.7°
TVD 4825.13'

SLTYSH: mgy-brn, occ dk gy, sft -
mod firm, sbblky - sbply, arg mtx
grdg- rthy mtx, noncalc
SS: wh - lt gy, tr brn - tan, mod
firm, sbblky - sb rnnd, mod-p srt, tr
glau, arg cmt, uncons
SHYSS: m gy, occ dkgy, f gr, sbang -
sbrnnd, mod srt, mod sft - frm,
occphlog, tr glauc, arg cmt

MD 5071'
INC 15.4°
AZM 111.2°
TVD 4915.42'



SLTYSH: mgy-brn, occ dk gy, sft -
mod firm, sbbiky - sbply, arg mtx
grdg- rthy mtx, noncalc
SS: wh - lt gy, tr brn - tan, mod
firm, sbbiky - sb rndd, mod-p srt, tr
glau, arg cmt
SHYSS: m gy, occ dkgy, f gr, sbang -
sbrndd, mod srt, mod sft - frm,
occphlog, tr glauc, arg cmt

MD	5166'
INC	13.1°
AZM	111.5°
TVD	5007.49'

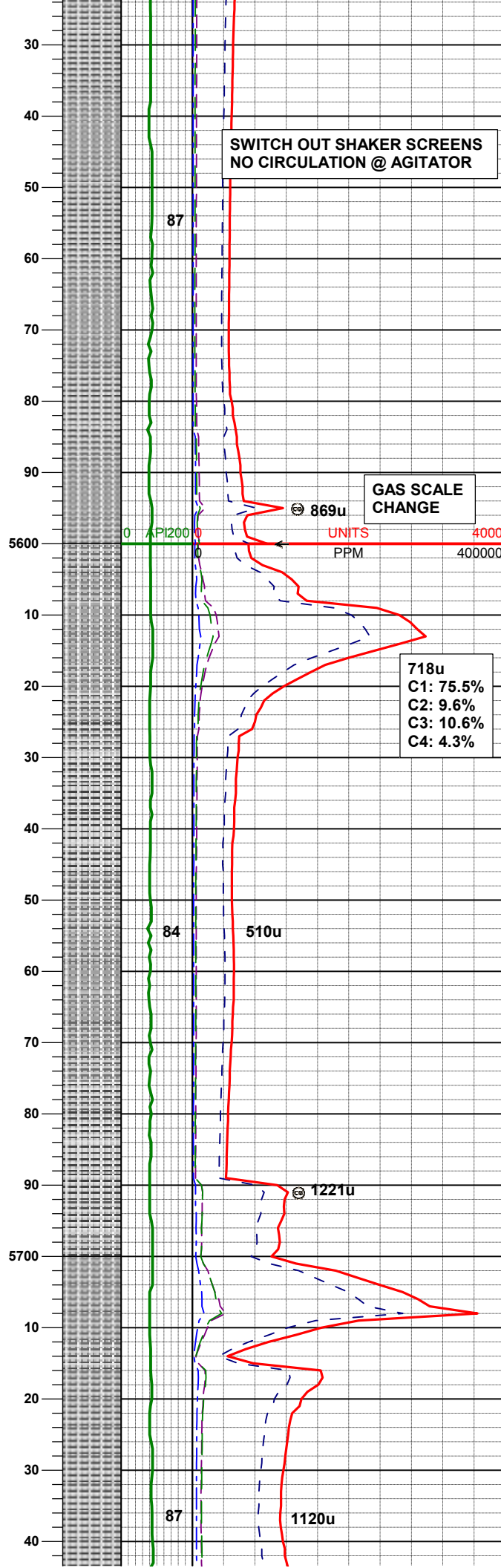
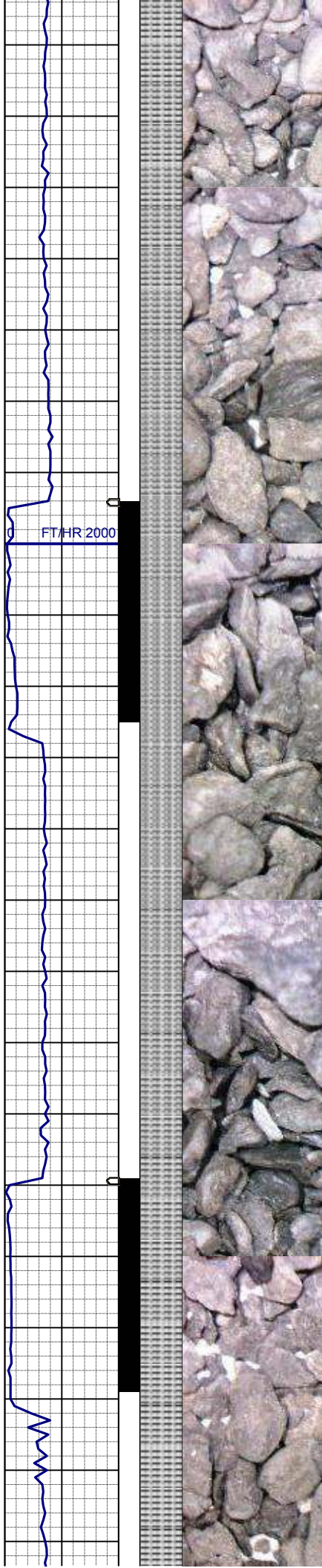
WT IN 8.75/ OUT 9.05
VIS IN 25/ OUT 27

UNITS
PPM
3000
300000
GAS SCALE
CHANGE

431u
C1: 75.1%
C2: 6.5%
C3: 11.6%
C4: 6.8%

SLTYSH: mgy-brn, occ dk gy, sft -
mod firm, sbbiky - sbply, rthy mtx, tr
arg mtx, noncalc
SHYSS: m gy, occ dkgy, f gr, sbang -
sbrndd, mod srt, mod sft - frm,
occphlog, tr glauc, arg cmt

MD	5261'
INC	9.8°
AZM	115.6°
TVD	5100.59'



MD 5545'
INC 4.4°
AZM 127.4°
TVD 5382.81'

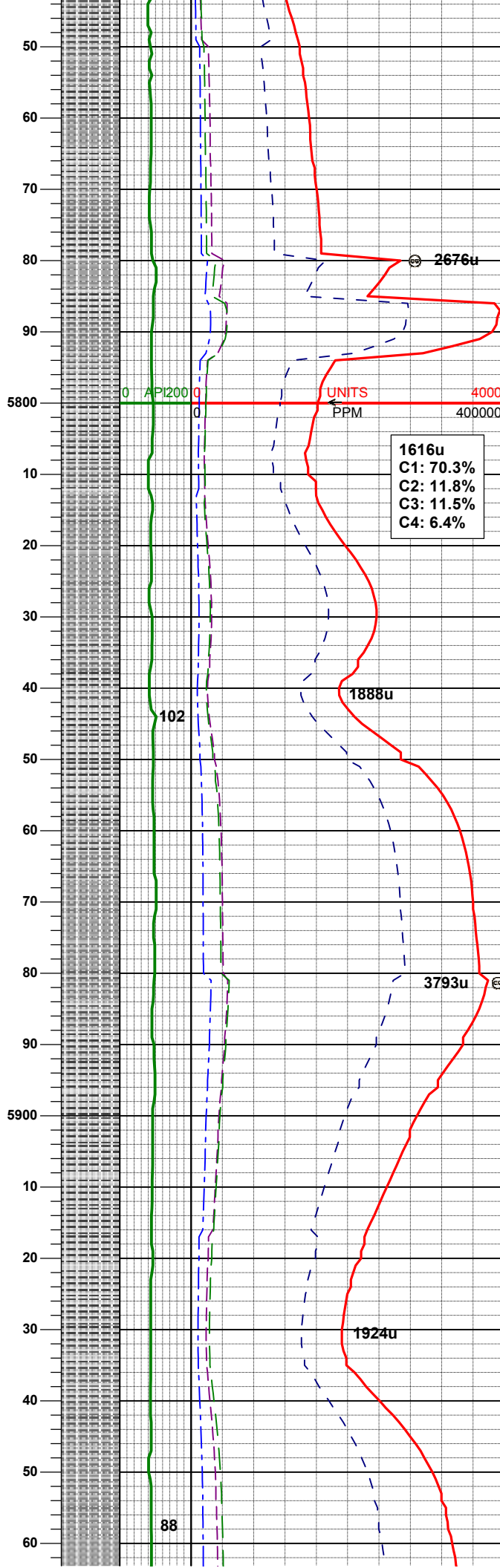
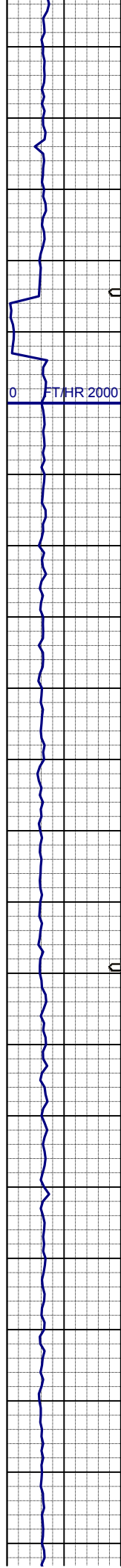
SLTYSH: mgy-brn, occ dk gy, sft -
mod firm, sbbiky - sbply, shy tex, tr
arg mtx, noncalc, tr shyss, tr pyr

MD 5640'
INC 3.1°
AZM 117.5°
TVD 5477.60'

SLTYSH: mgy-brn, occ dk gy, sft -
mod firm, sbbiky - sbply, shy tex, tr
arg mtx, noncalc, tr shyss, tr pyr

WT IN 8.80/ OUT 8.85
VIS IN 32/ OUT 30

MD 5735'
INC 1.6°
AZM 162.3°
TVD 5572.53'



SLTYSH: mgy-brn, occ dk gy, sft -
mod firm, sbbiky - sbply, shy tex, tr
arg mtx, noncalc, tr shyss, tr pyr

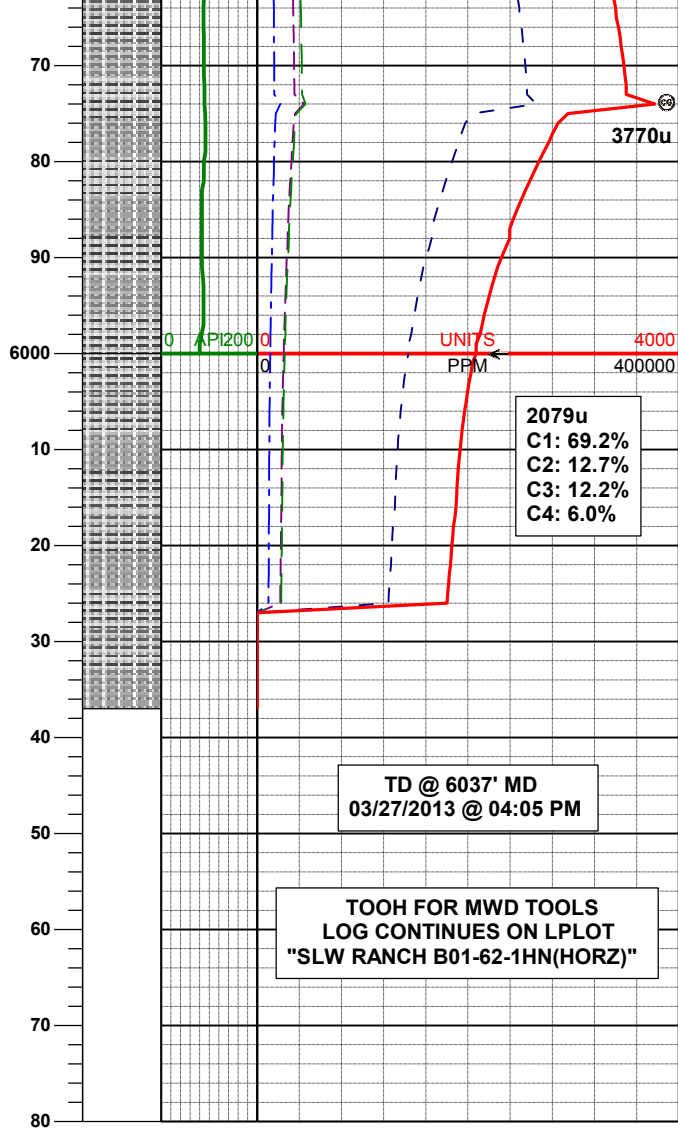
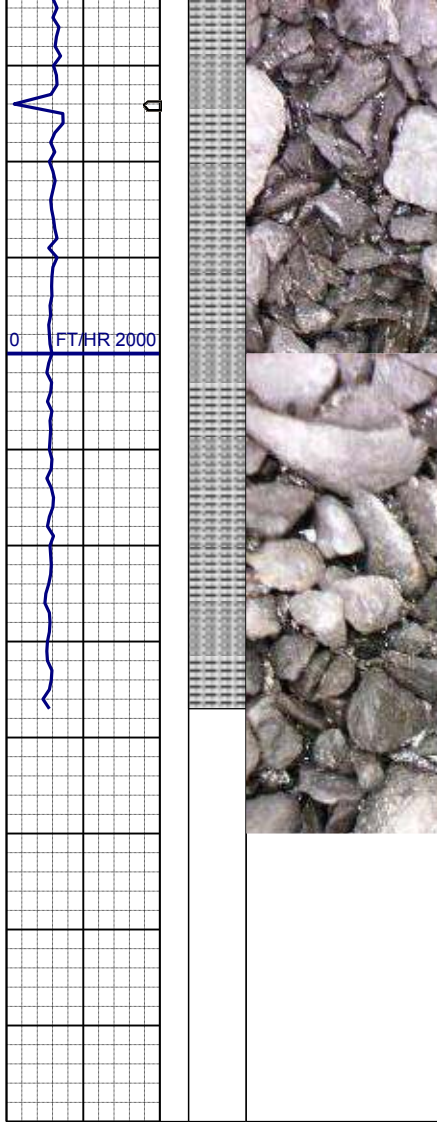
MD 5830'
INC 1.3°
AZM 167.3°
TVD 5667.50'

SLTYSH: mgy-brn, occ dk gy, sft -
mod firm, sbbiky - sbply, shy tex, tr
arg mtx, noncalc, tr shyss

WT IN 9.00/ OUT 8.95
VIS IN 32/ OUT 34

MD 5925'
INC 1.3°
AZM 164.3°
TVD 5762.47'

SLTYSH: mgy-brn, occ dk gy, sft -
mod firm, sbbiky - sbply, shy tex, tr
arg mtx, noncalc, tr shyss



SLTYSH: mgy-brn, occ dk gy, sft -
mod firm, sbblky - sbply, shy tex, tr
arg mtx, noncalc, tr shyss